



The Audi Q7
Pricing and Specification Guide



A User's Guide

This guide has been designed to help you tailor and price your chosen Audi model quickly and logically. At the back of this guide, there is a fold-out configurator which you can fill out as you go along. Here you will also find information on CO₂ emissions-based taxation and the other services offered by Audi, including Finance and Insurance. Alternatively, you can go to audi.co.uk and configure your Audi online.

Table of content

	Page Number
The Audi Q7	4
Standard equipment	6
SE trim	9
S line trim	10
quattro®	12
Engine and transmission	13
Audi exclusive	14
Audi Q7 prices	17
Technical data	17
Paint finishes	18
Upholstery	19
Inlays	20
Additional upholstery options	21
Audi Q7 packages	22
Wheels and tyres	23
Audio and communication	24
Seats	25
Safety and security	26
Steering wheels	27
Interior equipment	28
Exterior equipment	29
Colour and trim guide	32
CO ₂ data and information/servicing	34
Service by Design	35
Pricing information	36

The Audi Q7

The unprecedented Audi Q7 combines all the rugged energy of an SUV with the looks and high performance of a stylish sports coupé. As the ultimate expression of quattro permanent four-wheel-drive, it's designed to take you off the beaten track and beyond; helped, of course, by one of three incredibly powerful choices of engine – the 233PS 3.0 TDI, the 280PS 3.6 FSI and the 350PS 4.2 FSI. Capable of reaching 62 mph in 9.1, 8.5 and 7.4 seconds respectively, these engines impart a level of acceleration not normally associated with an SUV; and the exhilarating performance credentials don't end there. 18" alloy wheels and 5-mode adaptive air suspension are also included as standard.



The Audi Q7, however, isn't all about performance-fuelled hedonism. Beneath its sleek, sporty exterior styling and luxurious interior finish lies a wealth of practical touches – everything from climate control and heat-insulating tinted glass to rain-activated automatic windscreen wipers. The Audi Q7 also features a massive amount of luggage space, with seats that fold away quickly and simply to form a level load floor, revealing up to 2,035 litres of additional storage space. And should you ever manage to fill it from floor to ceiling, the Audi Q7 also thankfully comes with roof rails and rear acoustic parking. With this much Vorsprung durch Technik, there's little room left for improvement.





Standard equipment

All Audi Q7 models have the following items of standard equipment

7 seats (3 rows of seats) – second and third row can be split and folded flat to form a level load-area

7.5J x 18 '7-hole' alloy wheels with 235/60 R18 W tyres

Adaptive air suspension – electronically controlled air suspension with continuously adaptive damping system for all four wheels which regulates ride height and damping automatically. Choice of 5 modes (automatic, comfort, dynamic, off-road and lift) selected via the MMI system

Anti-theft alarm with tow-away protection including interior monitoring (Thatcham Category 1 approved)

Ashtray and cigarette lighter at front

Automatic climate control with separate driver and front passenger controls

Auto-dimming rear view mirror

Belt-height adjustment for the front seats (manually adjustable)

Bottle holders (up to 1.5 litres) in front and rear door trims (x4)

Brake light – third-brake light in rear window

Brakes with Anti-lock Braking System (ABS) and Electronic Brake-force Distribution (EBD)

Bumpers, plastic-covered, and rear bumper cover in matt black

Cargo nets on backs of front seats

Central locking with radio remote control

Centre console with air- conditioning control panel, ashtray, selector lever, MMI terminal, coin holder, cigarette lighter and 12V socket, two cup holders and storage compartment

Child locks, electric for rear doors and windows

Cigarette lighters in the centre console, front and rear

Coat hooks – 2 in the rear roof area and 1 on each of the B-post trims

Compartment for glasses in roof module

Cosmo cloth upholstery

Cruise control maintains any desired speed from approx. 20 mph

Cup holders – 2 at front of centre console, 2 in rear armrest and 2 in side trim of third seating row

Door exit lights at the front

Door mirrors – electrically folding and heated, electrically adjustable with LED indicators

Double load-floor with storage compartment and dirt resistant tray

Driver and front-passenger airbag with front-passenger airbag de-activation

Driver's Information System (DIS)

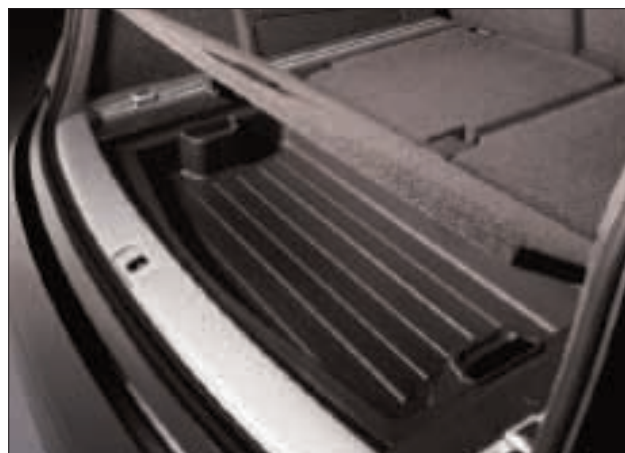
Electric front and rear windows

Electronic Differential Lock (EDL)

Electronic Stability Program (ESP) with extended on and off-road functions and Trailer Stabilisation system

First-aid kit

Floor mats front and rear



Front centre armrest, folding with storage compartment underneath
Front fog lights integrated into the front apron
Heated rear window with time switch
Heat-insulating glass (green tinted)
Illuminated vanity mirrors integrated into front sun visors
Indicators with 3-flash overtaking function
Inlays to fascia and door cappings in gloss black
ISOFIX child seat mounting (front left and outer seats of the 2nd seat row)
Lashing eyes x 4 in the luggage compartment
Leather covered 4-spoke multi-function steering wheel with radio and basic MMI controls and full size air bag
Light sensor for automatic activation of headlights
Load-through hatch in the rear seat back
Logo/model designation at the rear

Locking wheel-bolts
Luggage compartment cover
Luggage net in luggage compartment
MMI with 8 loudspeakers, monochrome display in dashboard and 4 function keys
Parking brake – foot operated
quattro permanent four-wheel-drive with asymmetric/dynamic distribution
Radio/CD player in front instrument panel
Rain sensor for automatic activation of front wipers
Reading lights – 2 at front and 2 at rear
Rear centre armrest in rear seat back, folding, with 2 cupholders
Rear acoustic parking
Roof rails (black)
Scuff plates with metal inlays
Seatbelts, 3-point for all seats

servotronic steering – power steering with speed-dependent control
Side airbags for driver and front passenger
Side-impact protection in the doors
Sideguard head airbag system to protect front and outer rear passengers in a side collision
Socket, 12V, 1 at front of centre console, 2 at rear of centre console and 1 in luggage compartment
Space-saving spare wheel (with compressor) – max. speed 50mph
Storage net at side of luggage compartment
tiptronic – 6-speed automatic transmission with Dynamic Shift Program (DSP)
Tool kit and car jack in luggage compartment
Visible Vehicle Identification Number (VIN)
Warning triangle with bracket
Windscreen washer jets, heated





SE trim

When we designed the SE trim, we had one person in mind – you. Featuring driver-oriented specifications such as Cricket leather upholstery and electrically adjustable, heated front seats, this impressive upgrade delivers luxury, exclusivity and technological sophistication, making every journey you undertake in your Audi Q7 the most comfortable you've ever had.



Includes:

(in addition to Standard specification listed on pages 6 and 7)

SE 8.5J x 18 '5-parallel-spoke' alloys with 255/55 R18 Y tyres

Aluminium-look air vent surrounds

Choice of Fresco or Velour carpet

Contrasting bumpers – front and rear bumpers and side sills painted. With the exterior colours Calla white, Sycamore green and Quartz grey, contrasting paint finish is in Matt silver. For all other colours, contrasting paint colour is Matt Platinum grey

Cricket leather upholstery to seat facings, head restraints and front and rear armrests

Front seats electrically adjustable with adjustment for forwards/backwards position, seat height, seat and backrest angle, and electric lumbar support

Inlays to fascia and door cappings in a choice of Olive Ash beige, Tamo Ash dark brown, Walnut natural or Aluminium Marlin silver

Lighting package – includes door lighting under the exterior door mirrors, ambient lighting of the centre console using LED technology, active door reflectors in the front and rear doors, footwell lights at front and rear with LED technology, rear door exit lights, lighting for air vents in the B-pillar and ashtray in the rear

Polished roof rails and trim strips

Seat heating for front seats – heats surfaces and backrests and is individually adjustable for each seat





S line trim

At Audi, we don't just make cars that look sporty; we make cars that literally raise the heart-rate, set the endorphins racing and take your breath away. Add an S line trim to your chosen model and you'll enhance that experience

even further. Featuring a range of muscular additions, including S line body styling, 20" alloy wheels and front Sports seats the Audi Q7 S line delivers a dynamic driving experience every time you get behind the wheel.



Includes:

(in addition to Standard specification listed on pages 6 and 7)

9J x 20 '5-spoke' design alloy wheels with 275/45 R20 Y tyres

Alcantara/leather combination upholstery to seat facings, head restraints and front and rear armrests

Black cloth roof headlining

Bumpers – full body coloured

Front Sports seats with S line logo, electrically adjustable with adjustment for forwards/backwards position, seat height, seat and backrest angle and electric lumbar support

Headlight washers

Inlays in Matt-brushed aluminium to fascia and door cappings

Leather covered 3-spoke S line multi-function steering wheel (with paddle shift gear change for tiptronic models)

Lighting package – includes door lighting under the exterior door mirrors, ambient lighting of the centre console using LED technology, active door reflectors in the front and rear doors, footwell lights at front and rear with LED technology, rear door exit lights, lighting for air vents in the B-pillar and ashtray in the rear

Polished roof rails and trim strips

Radiator grille in S line design

S line badge on side wings

S line body styling (front bumpers, side grille and rear diffuser)

S line scuff plates

Velour carpet, black



Model pictured has optional Mugello blue, pearl effect paint and standard S line 9J x 20 '5-spoke' design alloy wheels

quattro®

Permanent four-wheel-drive

A car that delivers as much pulling power as the Audi Q7 needs a harness in place – a technology that delivers safety and control whilst enhancing the sporty characteristics which make it so thrilling to drive. That's why the latest generation of quattro® permanent four-wheel-drive comes as standard on all models. The principle is simple: in the same way that four brakes ensure better deceleration, four permanently-driven wheels deliver

better acceleration and road-holding. In the Audi Q7, drive power is continuously distributed between the front and rear axles depending on weather conditions, road surface and gradient. And what better technology to feature on this sporty model than the one that has given Audi the edge on the racetrack ever since it was first introduced over 25 years ago.



Engines

V6 3.6 FSI and V8 4.2 FSI

FSI® is a unique Audi technology originally developed for the Le Mans 24-hour endurance race to deliver increased power and torque as well as enhanced fuel efficiency. The way it does this is, in theory, very simple. Fuel is injected directly into the combustion chambers, 'unthrottling' the engine, reducing heat-loss and increasing output – all whilst reducing fuel consumption and exhaust emissions. Ideal for the buyer who wants a sporty, exhilarating drive without the drawbacks of excessive fuel costs or high emissions-based taxation.

V6 3.0 TDI

All diesel engines from Audi are known as TDI. This impressive technology was originally pioneered by Audi in 1989, marking a departure from the noisy, fuel-thirsty diesel engines of the past. Like its FSI petrol counterpart, the TDI diesel engine is designed for power and performance, with low fuel consumption and CO₂ emissions. The working principle of the TDI engine is based upon precision and compression. A turbocharger supplies fresh air to the engine, ensuring optimum filling of the cylinder. Immediately after compression, an injector then delivers fuel into the combustion chambers at high pressure. The result – you get the most in terms of performance and economy, from every drop of fuel that enters the tank.

Transmission

tiptronic

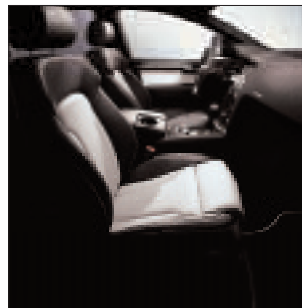
The 6-speed tiptronic transmission system is a form of automatic transmission available on Audi models with quattro permanent four-wheel-drive. The technology converts high-torque engine power into both sporty performance and operating convenience, with crisp, fast gear changes, reduced weight and an optimised gearshift strategy. More spontaneous gear changes are a particular benefit, especially when down-shifting. Both in the 'D' (Drive) and 'S' (Sport) programme, the advanced electronics used in tiptronic respond efficiently to every driver input, helping to prevent unwanted upshifts when cornering.



Audi exclusive

In a car made from Vorsprung durch Technik, exclusivity comes as standard. In the Audi Q7 it's present in everything, from the distinctive single-frame front grille to the stylish tail lights. But for that extra element of exclusivity, customise your Audi according to

your own unique taste with options from Audi exclusive. Whether you want Fine Nappa leather Sports seats, luxurious interior trim upgrades or even a customised carpet in your Audi Q7, Audi exclusive offers an impressive number of options to make it your own.



Upholstery

	Standard	SE	S line	Basic RRP	Total RRP inc. VAT
exclusive leather equipment and trim (package 1) Fine Nappa leather. Seat upholstery in Fine Nappa leather for all 3 rows of seats, door trim inserts in leather or Alcantara, head restraints and front centre armrest in leather from Audi exclusive colour range	• -	- •	- -	£3,191.49 £1,829.79	£3,750.00 £2,150.00
exclusive leather equipment and trim (package 1) Fine Nappa leather including Sports seats. As above including Sports seats with electrical adjustment. Available in combination with interior trim colours CA and CF only (see page 33 for details)	• -	- •	- -	£4,212.77 £2,851.06	£4,950.00 £3,350.00
exclusive leather equipment and trim (package 1) Fine Nappa leather/Alcantara including Sports seats. Seat upholstery in Fine Nappa leather /Alcantara for all 3 rows of seats, seat side sections, head restraints and front centre armrest in Black leather, seat centres in Alcantara	• -	- •	- -	£3,702.13 £2,340.43	£4,350.00 £2,750.00
exclusive leather equipment and trim (package 2) Fine Nappa leather Plus. As package 1 plus seat backrests, door pull-handles and door armrests in leather from Audi exclusive colour range	• -	- •	- -	£4,680.85 £3,319.15	£5,500.00 £3,900.00
exclusive leather equipment and trim (package 2) Fine Nappa leather Plus including Sports seats. As package 1 plus seat backrests, door pull-handles and door armrests in leather from Audi exclusive colour range	• -	- •	- -	£5,702.13 £4,340.43	£6,700.00 £5,100.00

Steering wheels

exclusive 4-spoke part-wood design (must be combined with a 4-spoke steering wheel)	•	•	-	£553.19	£650.00
--	---	---	---	---------	---------

Interior

exclusive control elements. Leather steering wheel rim and gear knob from Audi exclusive colour range	•	•	-	£382.98	£450.00
exclusive 'wood' gear lever	•	•	-	£153.19	£180.00
exclusive wood inlays. Fascia and door cappings from Audi exclusive range	•	•	-	£680.85	£800.00
exclusive ffootmats with piping from Audi exclusive colour range	•	•	•	£297.87	£350.00
exclusive carpet from Audi exclusive colour range (including exclusive floormats with leather piping)	•	•	•	£1,191.49	£1,400.00

Paint

exclusive paint from Audi range	•	•	•	£1,872.34	£2,200.00
--	---	---	---	-----------	-----------



Audi Q7 prices

Prices



Engine/Trim	Transmission	ABI Insurance Group	CO2 emissions g/km	Basic RRP	VAT	Total RRP inc. VAT	Recommended OTR
3.0 TDI Standard	6-speed tiptronic	16E	279	£31,617.02	£5,532.98	£37,150.00	£38,075.00
3.0 TDI SE	6-speed tiptronic	16E	279	£33,744.68	£5,905.32	£39,650.00	£40,575.00
3.0 TDI S line	6-speed tiptronic	16E	279	£34,510.64	£6,039.36	£40,550.00	£41,475.00
3.6 FSI Standard	6-speed tiptronic	17E	304	£31,829.79	£5,570.21	£37,400.00	£38,325.00
3.6 FSI SE	6-speed tiptronic	17E	304	£33,957.45	£5,942.55	£39,900.00	£40,825.00
3.6 FSI S line	6-speed tiptronic	17E	304	£34,723.40	£6,076.60	£40,800.00	£41,725.00
4.2 FSI SE	6-speed tiptronic	18E	326	£40,468.09	£7,081.91	£47,550.00	£48,475.00
4.2 FSI S line	6-speed tiptronic	18E	326	£41,234.04	£7,215.96	£48,450.00	£49,375.00

Technical Data

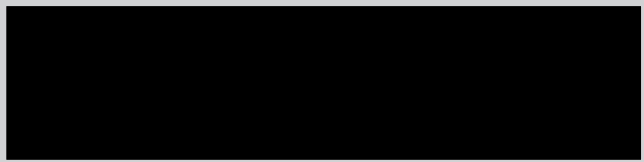
Engines	Power	Transmission	Fuel consumption*			Acceleration, seconds, 0-62 mph	Top speed, mph
			Urban	Extra Urban	Combined		
3.0 TDI	233PS	6-speed tiptronic	20.2 (14.0)	33.6 (8.4)	27.2 (10.4)	9.1	134
3.6 FSI	280PS	6-speed tiptronic	15.9 (17.8)	28.8 (9.8)	22.2 (12.7)	8.5	143
4.2 FSI	350PS	6-speed tiptronic	14.5 (19.5)	27.7 (10.2)	20.8 (13.6)	7.4	154

Please note: The maximum power output figures are quoted in PS (or Pferdestärke, which is the metric equivalent of brake horsepower). To convert to horsepower, divide the PS figure by 1.0139.

Paint finishes

Standard colours

No charge



Night black

A1

Optional colours

Basic RRP	Total RRP inc. VAT
£553.19	£650.00



Bahia beige, metallic

6L



Silver, metallic

5B



Garnet red, pearl effect

9C



Cobalt blue, metallic

5F



Quartz grey, metallic

Q4



Lava grey, pearl effect

1R



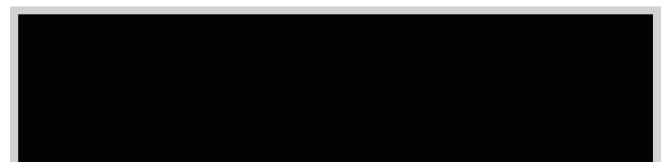
Condor grey, metallic

5Q



Sycamore green, metallic

8M



Phantom black, pearl effect

L8

Upholstery

Cloth and leather trim

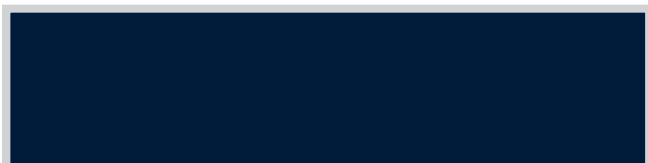
Additional colours available on S line models only

Basic RRP	Total RRP inc. VAT
£553.19	£650.00



Daytona grey, pearl effect

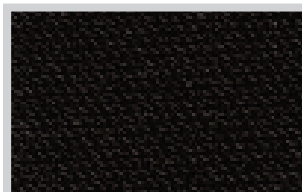
6Y



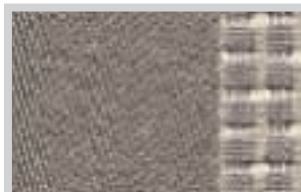
Mugello blue, pearl effect

5W

Also available on other models at Audi exclusive paint price

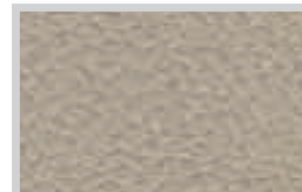


Black headlining



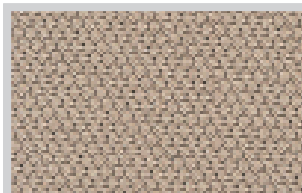
Cosmo cloth, pale grey

CF

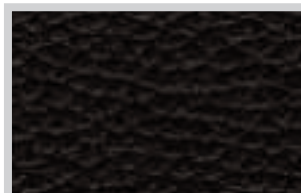


Cricket leather, Cardamom beige
– not available on Sports seats

CE/CH

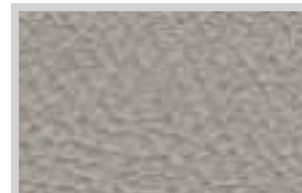


Cardamom beige headlining



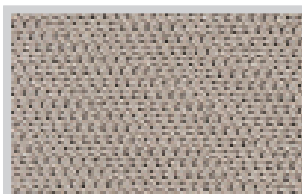
Cricket leather, black
– not available on Sports seats

CB



Cricket leather, pale grey
– not available on Sports seats

CG



Pale grey headlining



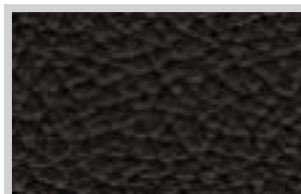
Cricket leather, Paranut brown
– not available on Sports seats

CC



Cosmo cloth, black

CA



Cricket leather, Borneo green
– not available on Sports seats

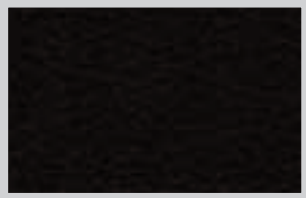
CD

Upholstery

Inlays

Leather and Alcantara/leather trim

S line inlays



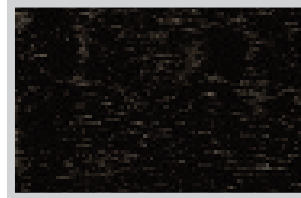
Verano leather, black CB



Verano leather, pale grey CG



Gloss Finish black 5MJ



Tamo Ash dark brown 5TA



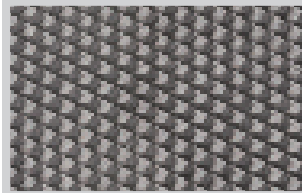
Matt brushed aluminium



Verano leather, Paranut brown CC



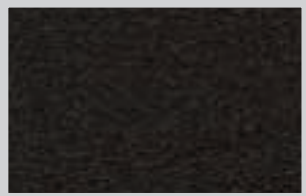
Pearl Nappa/Alcantara leather, black
- only available on Sports seats CB



Aluminium Marlin silver 5TE



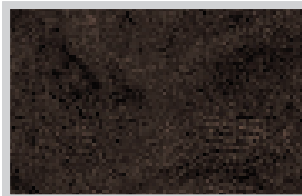
Fine-grain Birch wood, grey



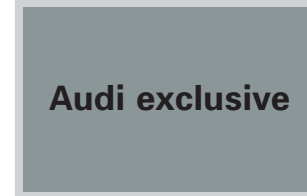
Verano leather, Borneo green CD



Pearl Nappa/Alcantara leather, pale grey
- only available on Sports seats CG



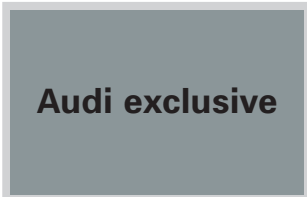
Walnut natural 5TS



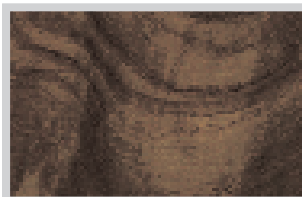
Audi exclusive leather trim from quattro GmbH



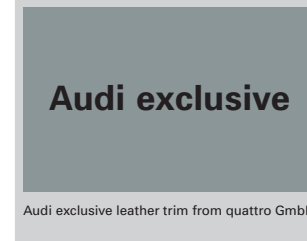
Verano leather, Cardamom beige
- not available on Sports seats CE/CH



Audi exclusive leather trim from quattro GmbH



Olive Ash beige 5MQ



Audi exclusive

Audi exclusive leather trim from quattro GmbH

Additional upholstery options








	Standard	SE	S line	Basic RRP	Total RRP inc. VAT
Cricket leather upholstery with a choice of wood or aluminium inlays to fascia and door cappings, aluminium-look vents, rear floor mats and Fresco or Velour carpet	•	S	-	£1,361.70	£1,600.00
Alcantara/leather combination with electric Sports seats with a choice of wood or aluminium inlays to fascia and door cappings (matt-brushed Aluminium or Birch grey only on S line models), aluminium-look vents, rear floor mats and Fresco and Velour carpet	• -	- •	S -	£1,914.89 £553.19	£2,250.00 £650.00
Verano leather Plus upholstery Verano leather seat upholstery, door armrest and door handle in Fine Nappa leather, with a choice of wood or aluminium inlays to fascia and door cappings, aluminium-look vents, rear floor mats and Fresco or Velour carpet	• -	- •	- -	£2,042.55 £680.85	£2,400.00 £800.00
Verano leather Plus upholstery with electric Sports seats Verano leather seat upholstery, door armrest and door handle in fine Nappa leather, a choice of wood or aluminium inlays to fascia and door cappings (matt-brushed Aluminium or Birch grey only on S line models), aluminium-look vents, rear floor mats and Fresco or Velour carpet	• - -	- • -	- - •	£3,063.83 £1,702.13 £1,148.94	£3,600.00 £2,000.00 £1,350.00
Inlays to fascia and door cappings in a choice of Aluminium Marlin silver, Walnut natural, Olive Ash beige or Tamo Ash dark brown on SE models. Choice of matt-brushed Aluminium or Birch grey on S line models	-	N	N	No charge	
Alcantara headlining Available in combination with interior trim colours CA, CB or CC (see page 33 for details)	•	•	•	£936.17	£1,100.00
Black cloth headlining Available in combination with interior trim colours CA, CB or CC (see page 33 for details)	•	•	S	£212.77	£250.00
Wooden gear knob Available in a choice of Olive Ash beige, Tamo Ash dark brown or Walnut natural (<i>only in combination with matching inlays</i>)	-	•	-	£68.09	£80.00



Audi Q7 packages

	Standard	SE	S line	Basic RRP	Total RRP inc. VAT
Technology package: <ul style="list-style-type: none"> • DVD Satellite Navigation system including dynamic route guidance with TMC and Europe DVD • MMI High with 7" colour monitor and extended radio system with double tuner • DSP sound system • CD Changer • Audi Parking System Plus (front and rear) with acoustic warning and visual display on MMI monitor • Electric tailgate including lid-closing assistance unit and programmable angle for the luggage compartment lid • Colour Driver's Information System (DIS) 	•	•	•	£2,119.15	£2,490.00
Communications package: <ul style="list-style-type: none"> • MMI High • Voice control • GSM mobile phone preparation (Bluetooth) in front Comfort centre armrest (included) 	•	•	•	£1,319.15	£1,550.00
Communications package – when combined with Technology pack: <ul style="list-style-type: none"> • Voice control • GSM mobile phone preparation (Bluetooth) in front Comfort centre armrest (included) 	•	•	•	£638.30	£750.00
Comfort package: <ul style="list-style-type: none"> • Advanced key • Comfort centre armrest • Electric adjustable front seats with memory • Electric steering column with memory • Auto-dimming door mirrors with memory 	-	•	•	£1,234.04	£1,450.00
Visibility package: <ul style="list-style-type: none"> • Adaptive light • Xenon Plus headlights • Headlight washers 	•	•	•	£723.40	£850.00
Load package: <ul style="list-style-type: none"> • Towing bracket – removable and lockable • Load securing set with rails • Reversible luggage compartment mat • Net partition 	•	•	•	£723.40	£850.00
Off-road styling pack:* <ul style="list-style-type: none"> • Front and rear lower bumper spoilers with stainless steel under-body protection • Side door lower protection strips • Stainless steel running boards • Wheel arch extensions • Front bumper protection strips • Reshaped exhaust tailpipes 	•	•	-	£2,127.66	£2,500.00

Wheels and tyres

	Standard	SE	S line	Basic RRP	Total RRP inc. VAT
 7.5J x 18 '7-hole' alloy wheels with 235/60 R18 W tyres	S	-	-	No charge	
 8.5J x 18 '5-parallel-spoke' design alloy wheels with 255/55 R18 Y tyres	•	S	-	£510.64	£600.00
 8.5J x 19 '7-spoke' design alloy wheels with 265/50 R19 Y tyres	• -	- •	- -	£978.72 £638.30	£1,150.00 £750.00
 9J x 20 '5-parallel-spoke' design alloy wheels, 2 colour, polished with 275/45 R20 Y tyres	• -	- •	- -	£1,659.57 £1,319.15	£1,950.00 £1,550.00
 9J x 20 '5-spoke' design alloy wheels with 275/45 R20 Y tyres	• - -	- • -	- - S	£1,702.13 £1,276.60	£2,000.00 £1,500.00 No charge
 10J x 20 '20-spoke' design two-piece alloy wheels with 295/40 R20 Y tyres*	• - -	- • -	- - •	£2,042.55 £1,617.02 £255.32	£2,400.00 £1,900.00 £300.00
 10J x 21 '7-double-spoke' design alloy wheels with 295/35 R21 Y tyres*	• - -	- • -	- - •	£2,382.98 £1,957.45 £595.74	£2,800.00 £2,300.00 £700.00

*Please note, this option includes a small extension to the wheel arches. On Standard and S line trims the wheel arch is matt black, but on SE models it matches the colour of the contrasting bumpers. Options are subject to availability and extended delivery.

- = Not available • = Available S = Standard

RRP – Recommended Retail Price.

Wheels and tyres

	Standard	SE	S line	Basic RRP	Total RRP inc. VAT
Off-Road Tyres 235/60 R18 107T (only in combination with 7.5J x 18 '7-hole' alloy wheels)	•	-	-	£106.38	£125.00
Spare 18" alloy wheel with 18" 235 tyres. Only for vehicles with third seating row removed (standard UK vehicle has a third seating row)	•	•	-	No charge	
Tyre-pressure monitoring system monitors the tyre-pressure and temperature of the wheels during the journey. The air pressure and temperature of the wheels can be displayed on the MMI system	•	•	•	£340.43	£400.00

Audio and communication

Audi Music Interface , universal connection for use with stereo audio sources and Apple iPod generation 4 onwards (iPod, iPod mini, iPod nano, iPod photo, iPod video). Provides intuitive control of an iPod through the MMI and multi-function steering wheel. It also replicates the iPod display on the MMI screen, including track titles. The interface provides power for an iPod as well as a convenient rubberised storage tray. (Only in combination with MMI High. An adapter cable is required at additional cost, please consult your Audi Centre for details)	•	•	•	£170.21	£200.00
BOSE surround sound system . 5-channel surround sound reproduction, dynamic noise-compensation, 8-channel amplifier, 13 loudspeakers including centre speaker in the dashboard and 2 surround loudspeakers in the rear shelf – making for an outstanding sound experience. Total output of 330 Watts (only in combination with MMI High)	•	•	•	£489.36	£575.00
CD changer . For 6 CDs, including MP3 CD compatibility, located in the centre console, operated via MMI system. When ordered with the standard MMI system, a single CD player is fitted under the centre armrest	•	•	•	£272.34	£320.00
DAB module . Digital Radio Reception integrated into MMI, receives digitally-transmitted radio stations in addition to the range of analogue stations (FM, MW, LW). Reception dependent on local digital network (only in combination with double glazing)	•	•	•	£293.62	£345.00
DVD Satellite Navigation system . Includes MMI High and colour Driver's Information System (DIS). Integrated into the MMI is a clear map display with special destinations indicated by symbols, high-speed map loading, zoom function, birds eye view function, selection of address book destinations, target memory, dynamic route guidance with TMC (with vehicle life subscription), including Europe DVD (where digitised), and Satellite Navigation disc-reader located in the spare-wheel well under the boot	•	•	•	£2,085.11	£2,450.00
MMI High . Integral operating concept comprising MMI terminal and MMI display (high-resolution 7" colour monitor), extended radio system with double tuner, DSP sound system and CD changer in the centre console (instead of single CD player)	•	•	•	£787.23	£925.00
TV tuner, analogue and digital . Analogue and digital TV tuner for improved reception of 'free-to-air' TV channels. Picture reception only possible when vehicle is stationary, sound reception at all times. Reception dependent upon local digital network availability (only in combination with MMI High)	•	•	•	£680.85	£800.00
Voice control system . Operates key basic functions of the Navigation system – DVD, radio, car phone and CD changer (where fitted) (only in combination with MMI High)	•	•	•	£276.60	£325.00

	Standard	SE	S line	Basic RRP	Total RRP inc. VAT
GSM mobile phone preparation. With hands-free and speech dialogue system for operation of main functions, located in front Comfort centre armrest (included). Bluetooth interface and roof-mounted aerial are included for optimum reception (a Generation 2 mobile phone cradle is required at extra cost. Please consult your Audi Centre for details)	•	•	•	£468.09	£550.00
Bluetooth mobile phone connection, operated via the optional MMI High system and integrated telephone voice-control system, including roof-mounted aerial for optimal reception. Must be combined with MMI High (price quoted does not include this item). Please note that your mobile phone must have Bluetooth SIM-Access Profile facility	•	•	•	£553.19	£650.00
Bluetooth mobile phone connection with Privacy Handset. As Bluetooth mobile phone connection with additional cordless Privacy Handset. The handset allows passengers to make private calls, provides remote control of the telephone functions as well as convenient SMS text message function. The handset is charged from a docking station integrated into the front Comfort centre armrest (included)	•	•	•	£936.17	£1,100.00

Seats

2 Comfort seats in second seating row. 2 individual seats in second row, can be folded down flat to form an even load area, including manual backrest adjustment, forwards/backwards adjustment and easy-entry function for the second row of seats. Option includes a centre console in rear with height-adjustable armrest, storage compartment and two cupholders. When this option is ordered the vehicle will include 6 seats in total	•	•	•	£468.09	£550.00
Electrically adjustable front seats, with adjustment for forwards/backwards position, seat height, seat and backrest angle and electric lumbar support	•	S	S	£723.40	£850.00
Electrically adjustable front seats, both sides with memory. As above, with memory for driver and front passenger seat, door mirrors and steering wheel (if electrically adjustable steering column is fitted)	• -	- •	- •	£1,106.38 £382.98	£1,300.00 £450.00
Electric lumbar support for the front seats – vertically and horizontally adjustable	•	S	S	£191.49	£225.00
Seat heating for front seats – for driver and front passenger seat, heats seat surfaces and backrests – with Sports seats or leather trim also heats seat side sections and is individually adjustable with variable temperature adjustment for each seat	•	S	•	£234.04	£275.00
Seat heating for front and outer rear seats – heats seat surfaces and backrests. With Sports seats or leather trim, seat-side sections are also heated, with individual temperature adjustment for each seat	• -	- •	• -	£468.09 £234.04	£550.00 £275.00
Through-load facility with removable ski/snowboard bag, for transporting long objects	•	•	•	£127.66	£150.00
Deletion of third seating row	•	•	•	No charge	

Safety and security

	Standard	SE	S line	Basic RRP	Total RRP inc. VAT
Adaptive light. Dynamic cornering system using swivelling headlights, including Xenon Plus and headlight-washer system	•	•	•	£936.17	£1,100.00
Xenon Plus headlights , with gas discharge technology for low and main beam, including headlight-washer system, daytime running lights with low energy consumption and automatic dynamic headlight range-control	•	•	•	£659.57	£775.00
Audi Parking System Plus , facilitates car parking by acoustically indicating the distance to obstacles in front of and behind the car and visually indicating this distance on the MMI display	•	•	•	£234.04	£275.00
Audi Parking System Advanced , facilitates car parking by acoustically indicating the distance to obstacles in front of and behind the car, by indicating the distance and providing a visual image of the area behind the vehicle on the MMI display and includes guiding lines. Measured by ultrasonic sensors and camera integrated discreetly in the boot handle (<i>only in combination with MMI High</i>)	•	•	•	£553.19	£650.00
Audi Side Assist. Aids the driver when changing lane. Audi Side Assist monitors the area behind your Audi Q7, using radar sensors located discreetly in the rear bumper and informs the driver via a visual warning signal in the door mirror if there is a vehicle in the driver's blind spot or approaching quickly from behind. The system is activated via a button in the driver's door	•	•	•	£382.98	£450.00
Door Mirrors – auto-dimming	•	•	•	£136.17	£160.00
Rear side airbags situated in side of rear seat – complements the side impact protection in the doors and the sideguard head system	•	•	•	£212.77	£250.00
Privacy glass. Dark-tinted rear and rear-side windows (<i>from B-pillar backwards</i>)	•	•	•	£276.60	£325.00
Double glazing. Windscreen and side windows in 2-layer laminated safety glass, connected to each other by a plastic film. Improves insulation against outside noise and break-in protection	•	•	•	£446.81	£525.00

Steering wheels

	Standard	SE	S line	Basic RRP	Total RRP inc. VAT
3-spoke multi-function leather-covered Sports type with gear-change controls for tiptronic models , with full size airbag, controls for operating MMI system, radio system, voice control system and telephone <i>(where fitted)</i>	•	•	S	£136.17	£160.00
Heated steering wheel in 4-spoke multi-function design <i>(only in combination with heated seats)</i>	•	•	-	£136.17	£160.00
Electrically adjustable steering column , adjustable for height and reach with auto easy-entry-and-exit function	•	•	•	£255.32	£300.00



Options are subject to availability and extended delivery.
 - = Not available • = Available S = Standard

Interior equipment

	Standard	SE	S line	Basic RRP	Total RRP inc. VAT
Adaptive cruise control. Automatic distance regulation, using radar sensors to maintain required distance by braking and accelerating. 4 programmes (<i>distance 1 to distance 4</i>) set via steering column controls of the cruise control system, includes colour Driver's Information System (DIS)	•	•	•	£1,042.55	£1,225.00
Advanced Key. Access and authorisation system that works through automatic data exchange between key and vehicle, allowing the driver to keep their car key in their pocket or bag at all times. To unlock and open, simply lift the exterior door handle. The door is locked by pressing the button on the handle. Pressing the start/stop button integrated in the centre console starts and stops the engine	•	•	•	£680.85	£800.00
Deluxe automatic air-conditioning at the rear. Temperature settings and air distribution can be adjusted at the rear on the left and right C-pillar outlets. Controls for rear passengers in centre console at rear; can also be adjusted via air conditioning controls at front	•	•	•	£468.09	£550.00
Garage door opener (HomeLink®)**. Programmable radio remote-control integrated into the front roof module – can be used for opening garages and exterior gates	•	•	•	£148.94	£175.00
Lighting package. Includes door lighting under the exterior mirrors, ambient lighting of the centre console using LED technology, active door reflectors in the front and rear doors, footwell lights at front and rear with LED technology, rear door exit lights, lighting for air vents in the B-pillar and ashtray in the rear	•	S	S	£148.94	£175.00
Comfort centre armrest, separated for driver and front passenger, with fold-up storage compartment on the driver's side, a cup holder at the front on the passenger's side and further cup holders in the armrest on the passenger's side (folding), with storage compartment under the centre armrest	•	•	•	£127.66	£150.00
Colour Driver's Information System (DIS)	•	•	•	£106.38	£125.00
Load-securing set with rails for varying the position of the lashing points, with fixing kit including telescopic bar and retaining strap, for dividing up the load area and fixing objects in place	•	•	•	£170.21	£200.00
Manual blinds for rear window and rear door windows protects the rear passengers from direct sunlight	•	•	•	£148.94	£175.00
Reversible luggage compartment mat (fabric/rubber) for the luggage compartment, one side in velour or rubber, with fold-out section for the loading lip and bumper	•	•	•	£68.09	£80.00
Removable net partition can be attached to the body or to the folded rear seat-back. Can be used with rear seat-back in upright position, one side folded down, or completely folded down	•	•	•	£85.11	£100.00
Folding tables on the front seat backrests	•	•	•	£63.83	£75.00
Non-smoking pack, ashtrays and cigarette lighters are replaced with additional storage trays	•	•	•	No charge	

Exterior equipment

	Standard	SE	S line	Basic RRP	Total RRP inc. VAT
Panoramic sunroof. Large 3-piece panoramic glass sunroof, extending to the third row of seats. Electrical operation for tilting and opening the front glass section, tinted glass insert, adjustable sun shield above the whole glass surface, electrically adjustable at front, manually adjustable at rear. Automatic close function from outside via central-locking	•	•	•	£1,276.60	£1,500.00
Electric tailgate, opens and closes electrically. Opened by pressing button on the car key, button in the driver's door trim or soft-touch button in the handle recess on the luggage compartment lid. Including lid-closing assistance unit and programmable angle for the luggage compartment lid	•	•	•	£319.15	£375.00
Towing bracket – electrically folding. Electrically folding ball head, operated via button in the luggage compartment, including trailer stabilisation via the Electronic Stability Programme	•	•	-	£723.40	£850.00
Towing bracket – removable and lockable – removable and lockable ball head. The 13-pin socket can be folded behind the bumper apron. The towing bracket, when removed, can be stored in the spare wheel, including trailer stabilisation via the Electronic Stability Programme	•	•	•	£553.19	£650.00
Deletion of engine designation at rear	•	•	•	No charge	
Deletion of model and engine designation at rear	•	•	•	No charge	
Stainless steel running boards	•	•	•	£595.74	£700.00







Colour and trim guide

Order code	Upholstery	Carpet	Dashboard	Headlining	Cosmo cloth	Cricket leather (PEB)	Verano leather Plus (PEC)	Alacantara/Leather (PED) ¹	Verano leather Plus (PEE) ¹
CA	Black	Black Velour	Black/Black	Pale grey	S	•	•	•	•
CF	Pale grey	Graphite grey Velour	Black/Graphite grey	Pale grey	S	•	•	•	•
CJ	Paranut brown	Black Velour	Black/Black	Pale grey	-	•	•	-	•
CK	Borneo green	Black Velour	Black/Borneo green	Cardamom beige	-	•	•	-	•
CL	Cardamom beige	Black Velour	Black/Borneo green	Cardamom beige	-	•	•	-	-
CM	Cardamom beige	Tan beige Velour	Taupe beige/Tan beige	Cardamom beige	-	•	•	-	-
CB	Black	Black/Multicolour Fresco	Black/Black	Pale grey	-	•	•	•	•
CG	Pale grey	Grey-beige/Multicolour Fresco	Black/Graphite grey	Pale grey	-	•	•	•	•
CC	Paranut brown	Black/Multicolour Fresco	Black/Black	Pale grey	-	•	•	-	•
CD	Borneo green	Black/Multicolour Fresco	Black/Borneo green	Cardamom beige	-	•	•	-	•
CE	Cardamom beige	Black/Multicolour Fresco	Black/Borneo green	Cardamom beige	-	•	•	-	-
CH	Cardamom beige	Grey-beige/Multicolour Fresco	Taupe beige/Tan beige	Cardamom beige	-	•	•	-	-

Interior trim colours for SE models:

Order code	Upholstery	Carpet	Dashboard	Headlining	Cricket leather (PEB)	Verano leather Plus (PEC)	Alacantara/Leather (PED) ¹	Verano leather Plus (PEE) ¹
CA	Black	Black Velour	Black/Black	Pale grey	S	•	•	•
CF	Pale grey	Graphite grey Velour	Black/Graphite grey	Pale grey	S	•	•	•
CJ	Paranut brown	Black Velour	Black/Black	Pale grey	S	•	-	•
CK	Borneo green	Black Velour	Black/Borneo green	Cardamom beige	S	•	-	•
CL	Cardamom beige	Black Velour	Black/Borneo green	Cardamom beige	S	•	-	-
CM	Cardamom beige	Tan beige Velour	Taupe beige/Tan beige	Cardamom beige	S	•	-	-
CB	Black	Black/Multicolour Fresco	Black/Black	Pale grey	S	•	•	•
CG	Pale grey	Grey-beige/Multicolour Fresco	Black/Graphite grey	Pale grey	S	•	•	•
CC	Paranut brown	Black/Multicolour Fresco	Black/Black	Pale grey	S	•	-	•
CD	Borneo green	Black/Multicolour Fresco	Black/Borneo green	Cardamom beige	S	•	-	•
CE	Cardamom beige	Black/Multicolour Fresco	Black/Borneo green	Cardamom beige	S	•	-	-
CH	Cardamom beige	Grey-beige/Multicolour Fresco	Taupe beige/Tan beige	Cardamom beige	S	•	-	-

Colour and trim guide

Interior trim colours for S line models:

Order code	Upholstery	Carpet	Dashboard	Headlining	Alcantara/ leather (PED)	Verano leather (PEE)
QE	Black	Black Velour	Black/Black	Black	S	•

Paintwork and interior trim colour combinations:

Order code	Paint No.	Exterior Colour														
			CA	CF	CJ	CK	CL	CM	CB	CG	CC	CD	CE	CH	QE	
A1A1	041	Night black	•	•	•	•	•	•	•	•	•	•	•	•	•	•
6L6L*	X1Z	Bahia beige, metallic	•	-	•	-	•	•	•	-	•	-	•	•	•	
5F5F*	Z5Q	Cobalt blue, metallic	•	•	•	-	-	•	•	•	•	-	-	•	•	
5Q5Q*	Y7E	Condor grey, metallic	•	•	•	-	-	•	•	•	•	-	-	•	•	
5B5B*	7YW	Light silver, metallic	•	-	•	•	-	-	•	-	•	•	-	-	•	
8M8M*	X6Y	Sycamore green, metallic	•	•	-	•	-	•	•	•	-	•	-	•	•	
Q4Q4*	Y7G	Quartz grey, metallic	•	•	•	-	-	-	•	•	•	-	-	-	•	
9C9C*	Z3F	Garnet red, pearl effect	•	•	-	-	-	•	•	•	-	-	-	•	•	
1R1R*	Z7L	Lava grey, pearl effect	•	•	•	•	•	•	•	•	•	•	•	•	•	
L8L8*	Z9Y	Phantom black, pearl effect	•	•	•	•	•	•	•	•	•	•	•	•	•	
6Y6Y*	Z7S	Daytona grey, pearl effect	-	-	-	-	-	-	-	-	-	-	-	-	•	
5W5W*	Z56	Mugello blue, pearl effect	-	-	-	-	-	-	-	-	-	-	-	-	•	

* Additional charge for this upholstery / trim / paintwork.
 - = Not available • = Available

Please Note: The above are recommended combinations only.
 If another combination is requested, this can be accommodated but may extend delivery time.

CO₂ data and information

CO₂ emissions-based Vehicle Excise Duty

Vehicle Excise Duty (Road Fund Licence) is based upon the type of fuel a vehicle uses and the amount of Carbon Dioxide (CO₂) it emits, measured in grams per kilometre (g/km). The DVLA has created six categories for petrol and diesel engines.

CO₂ emission figures

The CO₂ emission figures quoted in the technical data section on page 15 are based on a fully laden vehicle, including the driver, and the heaviest possible options configuration. Actual CO₂ emissions may be lower depending on options selected.

	Petrol and Diesel engines
A – up to 100g/km	£0.00
B – 101 to 120g/km	£35.00
C – 121 to 150g/km	£115.00
D – 151 to 165g/km	£140.00
E – 166 to 185g/km	£165.00
F – 186 to 225g/km	£205.00
G – over 226g/km	£300.00

Servicing

Servicing tailored to your needs

Prior to the 2000 model year, almost all Audi models followed a traditional fixed Service Schedule similar to that of other major car manufacturers: a Lubrication Service every 10,000 miles and an Inspection Service every 12 months or 20,000 miles – whichever occurred sooner. Since then, Audi has introduced a more flexible maintenance system that works in accordance with how, where and how much an individual uses their car.

The two Servicing Regimes available are the conventional 'Inspection Service Regime' and the flexible 'LongLife Service Regime'. When you purchase a new car, we will recommend one of these regimes to you depending on your own individual driving style and journey-type. The tables below should give you an indication of which regime might be more appropriate for you.

With the LongLife Service Regime, on-board sensors continuously monitor the condition of the engine oil in terms of temperature, level and oil degradation. The monitoring system also checks mileage, brake-pad wear and battery condition. Using this information, the car's on-board

Inspection Service Regime

Vehicle usage:	
Mileage	Less than 10,000* miles per annum.
Type of Journey	Mainly city/town centre driving. Short journeys.
Conditions	Frequent cold starts. High engine loading – e.g. frequent hill climbs, vehicle fully loaded, towing.
Driving style	Uneconomical – e.g. heavy acceleration, heavy braking, constant changes in speed, constant use of high revs, 'sporty' driving.

Service intervals:	
Oil-change Service	Every 10,000* miles / 1 year
Interval Service	Every 20,000* miles / 2 years
Interval Service Inspection	Every 40,000* miles / 4 years

computer calculates its own maintenance interval, providing you with ample warning of a due Service via the 'distance to Service' display.

In practice, this means that every Audi gets the maintenance it needs, when it needs it. For companies and private owners alike, there are many advantages to the LongLife Service Regime. Longer service intervals mean lower maintenance costs, and thus lower whole-life costs. According to company car mileage monitored at Audi since the introduction of LongLife, petrol engines are typically achieving an average of at least 17,500 miles and diesel engines around 20,000 miles between services.

One of the factors that makes this kind of servicing regime possible is the advanced engineering and technology that goes into Audi engines. Furthermore, Audi use high-grade long-life oils such as Castrol SLX LongLife III, which are designed to withstand ageing and high loads without deterioration. Compared to conventional oils, these advanced-formulation oils also give exceptional levels of engine protection, are kinder to the environment and deliver average fuel savings of 2.7%.

LongLife Service Regime

Vehicle usage:	
Mileage	More than 30 miles per day.
Type of Journey	Motorway and main road driving. Mainly longer distance journeys. Constant speeds.
Conditions	Normal engine loading – e.g. with little or no towing, with little or no hill climbs. Normal vehicle loading.
Driving style	Moderate acceleration, moderate braking, engine revs mainly below 3000.

Service intervals:	
Interval Service	Flexible to a maximum 20,000* miles / 2 years
Interval Service Inspection	Every 40,000* miles / 4 years

Service by Design

At Audi, we believe our customers have the right to expect excellent service each and every time they make contact with us. To ensure that this happens, we have agreed a set of service standards with our Audi Centre network that governs the way they do business with you. These standards apply to both Sales and Aftersales, and we actively monitor our Centres to ensure that you receive the highest level of customer service. These service standards will ensure a consistent, stress-free experience whenever you are in contact with anyone representing the Audi brand.

Every Audi Centre will be open during the following hours:

Sales: 9am–6pm Monday to Friday
9am–5pm Saturday

Service: 8am–6pm Monday to Friday
8.30am–1pm Saturday

Sunday opening at local discretion.

Test drives

Whilst we cannot always have the desired demonstrator car ready immediately, we will confirm arrangements for a test drive within two working days (subject to status).

New Car delivery

Once we have confirmed a delivery date with you, we will keep you informed of progress. In the unlikely event of a delay, we will provide you with a courtesy car to minimise inconvenience and keep you mobile.

Delivery to any location within the UK

To maximise your Audi experience right from the first day of ownership, we will deliver your car to your preferred location – whether that's home or your place of work (subject to reasonable notice).

Every attention to detail

Your ownership experience starts with half a tank of fuel.

Quotation response

We are committed to answering any quotation request within 1 working day.

Training

We run a continuous training development programme for all our staff so that we consistently deliver a high-quality, professional service.

Formal complaints procedure

We have a complaints procedure designed to ensure any negative issue you raise with us is dealt with properly.

Courtesy cars

When your car is off the road, perhaps due to a scheduled service or MOT, we will offer you an Audi Courtesy Vehicle until yours is ready. We'll even collect from and deliver to your chosen location, keeping hassle to an absolute minimum.

All our courtesy cars are insured and fuelled

Upon collection or delivery, your courtesy car will have a minimum of a quarter of a tank of fuel; all we ask is that you replace any fuel used before returning it to us. On presentation of your driving licence, we will also insure the car free of charge.

Service bookings

If you do not require a courtesy car, we will service your Audi within a maximum of 5 working days. If you do choose to take a courtesy car, we will promise to service your vehicle within a maximum of 10 working days.

Cleaning

When your car comes to our workshop, we will wash and vacuum it at no extra cost.

No hidden charges

You will be consulted before we carry out any necessary work on your vehicle, and anything charged for will be itemised on your bill. No extra work will be undertaken without your permission.

A personal service

All work will be done by a named Audi technician, to whom you can personally direct questions or requests should you need to.

Environmental commitment

We promise to dispose of all non-biodegradable materials from your vehicle in a responsible manner.



Pricing information

Pricing

Prices and specifications given are correct at the time of printing. Always check details with your Audi Centre, as Audi policies are continually developing. We reserve the right to change prices or specifications at any time.

All prices are subject to VAT, currently charged at 17.5%.

Delivery charges and numberplates are not included in the vehicle price.

<u>Delivery charge</u>	<u>£469.36</u>
<u>Numberplates</u>	<u>£20.00</u>
<u>VAT</u>	<u>£85.64</u>
<u>Total</u>	<u>£575.00</u>

Audi Roadside Assistance

Your new car comes complete with free roadside assistance and recovery across the UK provided by RAC Motoring Services. Your 24 months' free cover can be extended for a further year free-of-charge, provided that your vehicle is serviced and, if necessary, repaired by an Authorised Audi Centre or Audi-Authorised Repairer in accordance with the manufacturer's instructions.

Audi Customer Care

Every new Audi benefits from the comprehensive Audi Customer Care Package, which comprises:

- ▶ A 3-year Audi warranty, which covers you for unlimited mileage in the first 2 years of ownership, with a full mechanical and electrical warranty which covers you for up to 60,000 miles in the 3rd year
- ▶ A 3-year paint warranty
- ▶ A 12-year anti-corrosion warranty
- ▶ Up to 3 years' UK roadside assistance and recovery

This package, together with Audi variable Service intervals, offers a combination unmatched by any other major manufacturer. Contact your Audi Centre for full details.

Audi Tax-Free Sales

If you are entitled to purchase a vehicle free of VAT, normally through Military or Diplomatic privilege, please contact your local Audi Centre for full details.

Should you have any difficulty obtaining the information you require, please call Freephone 0800 585878.

Audi Finance

Audi Finance specialise in providing funding solutions for Audi drivers. Whether your Audi is for private or business use, there are a range of funding options to choose from.

Below is the full range of finance products.

- ▶ Solutions – a Personal Contract Plan
- ▶ Hire Purchase
- ▶ Lease Purchase
- ▶ Finance Lease
- ▶ Contract Hire

With all products, you can choose a fixed-cost maintenance plan designed to help you budget accurately.

No matter what Audi model you choose, your local Audi Centre can provide you with a personalised quote which could fit your budget and motoring needs.

Audi Finance is a trading name of Volkswagen Financial Services (UK) Limited. An offer of finance depends on certain conditions. Available to people over 18 in the UK only.

Audi Insurance

Competitive comprehensive motor insurance designed specially for Audi drivers. All new Audi models come with complimentary seven-day cover upon request – we'll email a cover note directly to your Audi Centre, enabling them to tax your car easily. This way, you can drive straight out of the showroom. Taking out an annual policy is easy and can begin as soon as your free seven-day cover expires.

For more information, contact your local Audi Centre. Alternatively, call 0800 051 3146 for a quote and to receive 7 days' complimentary cover for your new Audi.

Audi Insurance is underwritten and administered by Zurich Insurance Company.

Notes





Option

Price

The Audi Q7

ABI Insurance Group

Paint finish

Package



Upholstery and trim

Wheels and tyres

Audio and communication

Seats

Safety and security

Steering wheel

Interior equipment

Exterior equipment

Colour and trim

Total

Please detach and hand to a member of staff at your Audi Centre.

Audi UK
Customer Service
P.O. Box 400
Walsall
WS5 4XX
0800 699888
www.audi.co.uk

Specifications and
prices subject to
change without notice.

© Audi UK

Printed in the UK
Edition 6. 04/07
2007 model year