



Mazda5

Vehicle Specifications.



zoom-zoom

Mechanical Features and Model Availability.

Engines:

- 1.8 MZR Petrol
- 1798cc in-line 4-cylinder, 16-valve, DOHC, 4-stroke petrol engine, developing 115ps (85kW) at 5300rpm and 165Nm at 4000rpm.
 - CO₂ emissions of 190g/km – EC Stage IV (Combined).
 - Sequential electronic multi-point fuel injection.
 - Tumble Swirl Control Valve System.

- 2.0 MZR Petrol
- 1999cc in-line 4-cylinder, 16-valve, DOHC, 4-stroke petrol engine, developing 145ps (107kW) at 6000rpm and 185Nm at 4500rpm.
 - CO₂ emissions of 198g/km – EC Stage IV (Combined).
 - Sequential electronic multi-point fuel injection.
 - Tumble Swirl Control Valve System.
 - Variable Induction System (VIS).

- 2.0 MZR-CD Diesel (110ps)
- 1998cc in-line 4-cylinder, 16-valve, SOHC, Direct-Injection Turbo Diesel engine developing 110ps (81kW) at 3500rpm and 310Nm at 2000rpm.
 - CO₂ emissions of 173g/km – EC Stage IV (Combined).
 - Common-rail fuel injection.
 - 32-bit Powertrain Control Module (PCM).
 - Diesel Particulate Filter.

- 2.0 MZR-CD Diesel (143ps)
- 1998cc in-line 4-cylinder, 16-valve, SOHC, Direct-Injection Turbo Diesel engine developing 143ps (105kW) at 3500rpm and 360Nm at 2000rpm.
 - CO₂ emissions of 173g/km – EC Stage IV (Combined).
 - Common-rail fuel injection.
 - 32-bit Powertrain Control Module (PCM).
 - Diesel Particulate Filter.

Transmissions:

- 5-speed manual in conjunction with petrol engines.
- 6-speed manual in conjunction with diesel engines.

Body:

- 5-star Euro NCAP rating for adult occupation protection.
- Self-supporting rigid and torsion-resistant all-steel body with defined crumple zones for the front and rear sections, stable passenger safety cell with side impact reinforcement in the doors.
- Further strengthened triple-H safety construction.
- Mazda Advanced Impact Distribution and Absorption System (MAIDAS) designed to secure the critical interior space in the event of an accident.
- Supplementary Restraint System (SRS) comprising central control unit and crush sensors, seatbelt pre-tensioners, load-limiters and seatbelt reminders (driver and passenger).
- Driver and passenger front airbags, front side airbags and curtain airbags for all seat rows (including third row).

Chassis and Suspension:

- Front: Independent suspension with MacPherson struts and coil springs.
- Rear: E-type multi-link suspension. Independent with angled dampers and low-mounted springs to maximise space for third row seats and/or load compartment.

Brake System:

- Hydraulic, diagonally divided dual-circuit system with power brake unit.
- Anti-lock Braking System (ABS) with Electronic Brake-force Distribution (EBD) and Emergency Brake Assist (EBA).
- Dynamic Stability Control (DSC) with Traction Control System (TCS)*.
- Front: 278mm with 15" brake and 300mm with 16" brake ventilated disc brakes.
- Rear: 278mm with 15" brake and 300mm with 16" brake disc brakes.

* Standard on Sport derivatives.

Model Availability	1.8 MZR	2.0 MZR	2.0 MZR-CD Diesel (110ps)	2.0 MZR-CD Diesel (143ps)
TS	●	–	●	–
TS ²	●	●	●	–
Sport	–	●	–	●
Sport Nav	–	●	–	●

● = Available.
– = Not available.

Technical Data.

Engine Type	1.8 MZR	2.0 MZR	2.0 MZR-CD Diesel (110ps)	2.0 MZR-CD Diesel (143ps)
Displacement (cc)	1798	1999	1998	1998
Bore x stroke (mm)	83.0 x 83.1	87.5 x 83.1	86.0 x 86.0	86.0 x 86.0
Valves per cylinder	4	4	4	4
Maximum output [ps (kW) / rpm]	115 (85) / 5300	145 (107) / 6000	110 (81) / 3500	143 (105) / 3500
Maximum torque (Nm / rpm)	165 / 4000	185 / 4500	310 / 2000	360 / 2000
Compression ratio	10.8:1	10.8:1	16.7:1	16.7:1

Transmission

Type		5-speed manual	5-speed manual	6-speed manual	6-speed manual
Gear ratios:	1st	3.666	3.307	3.538	3.538
	2nd	2.059	1.842	1.913	1.913
	3rd	1.392	1.310	1.218	1.218
	4th	1.030	1.030	0.880	0.880
	5th	0.795	0.795	0.809	0.809
	6th	–	–	0.673	0.673
	Reverse	3.454	3.454	3.831	3.831
Final gear ratio		4.388	4.588	3.611 (1st to 4th) 3.095 (5th, 6th)	3.611 (1st to 4th) 3.095 (5th, 6th)

Steering

Steering gear	Power-assisted rack and pinion			
Minimum turning circle (kerb-to-kerb) (m)	5.3	5.3	5.3	5.3

Performance and Economy

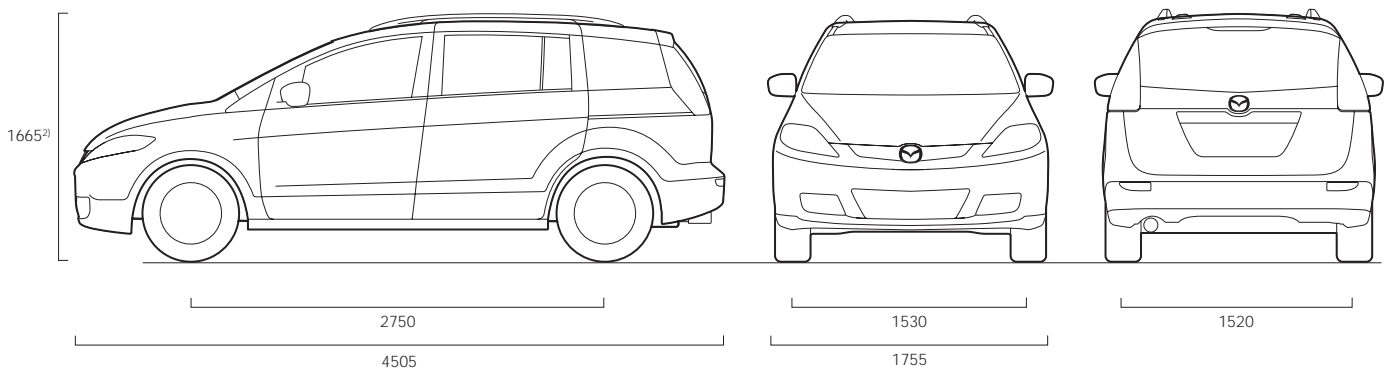
Acceleration [0-62mph (0-100km/h) in sec]		11.4	10.8	12.9	10.4
Top speed [mph (km/h)]		113 (182)	122 (196)	111 (179)	122 (197)
Fuel consumption ¹⁾ [mpg (L/100km)] :	Urban	26.4 (10.7)	25.7 (11.0)	38.7 (7.3)	38.7 (7.3)
	Extra Urban	44.8 (6.3)	42.8 (6.6)	49.6 (5.7)	49.6 (5.7)
	Combined	35.8 (7.9)	34.5 (8.2)	44.9 (6.3)	44.9 (6.3)
CO ₂ emissions ¹⁾ (g/km)	Combined	190	198	173	173
EC emission level		EC Stage IV	EC Stage IV	EC Stage IV	EC Stage IV
Recommended fuel		Unleaded 95 RON	Unleaded 95 RON	Diesel	Diesel
Fuel tank capacity (litres)		60	60	60	60

¹⁾ Fuel consumption and CO₂ emissions values according to 1999/100/EC.

Technical Data.

Dimensions and Weights		1.8 MZR	2.0 MZR	2.0 MZR-CD Diesel (110ps)	2.0 MZR-CD Diesel (143ps)
Overall length / width / height ²⁾ (mm)		4505 / 1755 / 1665	4505 / 1755 / 1665	4505 / 1755 / 1665	4505 / 1755 / 1665
Ground clearance (mm) between the axles – unladen		140	140	140	140
Front track / Rear track (mm)		1530 / 1520	1530 / 1520	1530 / 1520	1530 / 1520
Wheelbase (mm)		2750	2750	2750	2750
Front row headroom / leg room / shoulder room (mm)		1033 / 1035 / 1410	1033 / 1035 / 1410	1033 / 1035 / 1410	1033 / 1035 / 1410
Second row headroom / leg room / shoulder room (mm)		1000 / 998 / 1411	1000 / 998 / 1411	1000 / 998 / 1411	1000 / 998 / 1411
Third row headroom / leg room / shoulder room (mm)		942 / 780 / 1250	942 / 780 / 1250	942 / 780 / 1250	942 / 780 / 1250
Sliding rear door opening width (mm)		700	700	700	700
Cargo volume, acc. to VDA:	7-seat mode (all seats in use)	112	112	112	112
	Up to second row seat-back	426	426	426	426
	With second and third row seats folded	857	857	857	857
Ventilated front disc diameter (mm)	15" brake	278	278	278	278
	16" brake	300	300	300	300
Rear disc diameter (mm)	15" brake	278	278	278	278
	16" brake	300	300	300	300
Kerb weight (kg) min. / max.		1395 / 1512	1400 / 1527	1535 / 1645	1535 / 1653
Permitted gross vehicle weight (kg)		2090	2100	2225	2230
Permitted axle load, front / rear (kg)		975 / 1190	975 / 1200	1110 / 1190	1110 / 1195
Maximum roof load (kg)		75	75	75	75
Towing limit (kg):	Unbraked	600	600	600	600
	Braked (12% gradient)	1300	1400	1400	1400

²⁾ Overall height without roof rails is 1615 mm.



Equipment.

Safety and Security		TS	TS ²	Sport	Sport Nav
Mazda Advanced Impact Distribution and Absorption System (MAIDAS) engineered 'triple H' body structure to help protect occupants from impact forces		●	●	●	●
Supplementary Restraint System (SRS) – Central control unit and crush sensors, front seatbelt pre-tensioners, load-limiters		●	●	●	●
Four-Wheel Anti-lock Braking System (ABS) with Electronic Brake-force Distribution (EBD) and Emergency Brake Assist (EBA)		●	●	●	●
Dynamic Stability Control (DSC) with Traction Control System (TCS)		–	–	●	●
Front driver and passenger airbags		●	●	●	●
Front side airbags		●	●	●	●
Front and rear curtain airbags (up to third row)		●	●	●	●
Seatbelts:	Front, 3-point (ELR) x 2 with pre-tensioners	●	●	●	●
	Rear, second row, 3-point x 3	●	●	●	●
	Rear, third row, 3-point x 2	●	●	●	●
	Seatbelt reminder (driver and front passenger seat)	●	●	●	●
ISOFIX child seat anchorages		●	●	●	●
Thatcham Category 1 Alarm and immobiliser system		●	●	●	●
Exterior					
Tyres and wheels:	195/65 R15 with 6.0JJ steel wheels with wheelcovers	●	–	–	–
	205/55 R16 with 6.5JJ aluminium wheels	–	●	–	–
	205/50 R17 with 6.5JJ aluminium wheels	–	–	●	●
Temporary size spare wheel:	T115/70 D15 with 15" brake discs	●	–	–	–
	T125/70 D16 with 16" brake discs	–	●	●	●
Body-coloured bumpers, front and rear		●	●	●	●
Bodyside mouldings:	Black colour	●	–	–	–
	Body-coloured	–	●	●	●
Door handles:	Black colour	●	–	–	–
	Body-coloured	–	●	●	●
Body-coloured rear roof spoiler		–	–	●	●
Roof rails, black		–	●	●	●
Privacy glass for rear windows		–	–	●	●
Heated rear window		●	●	●	●
Wipers:	Front, intermittent wipe and electric wash	●	●	●	●
	Front, automatic with rain sensors	–	–	●	●
	Rear, intermittent	●	●	●	●
Headlights:	Halogen	●	●	●	●
	Light sensor (auto lights on)	–	–	●	●
Headlight levelling:	Manual	●	●	●	●
Front fog lights		–	–	●	●
Rear fog light		●	●	●	●
Rear brake light, high-mounted		●	●	●	●
Door mirrors:	Black housings, power-operated, driver's wide angle	●	–	–	–
	Body-coloured housings, power-operated and heated, driver's wide angle	–	●	●	●
Electric tilt-and-slide sunroof (optional on petrol only)		–	–	○	○
Metallic / Mica paint		○	○	○	○

● = Standard.
○ = Option, at extra cost.
– = Not available.

Equipment.

Comfort and Convenience		TS	TS ²	Sport	Sport Nav
Power windows:	Front, with one-touch auto up and down on driver's and passenger's side	●	–	–	–
	Front and rear, with one-touch auto up and down on each window	–	●	●	●
Remote central door locking:	With illuminated entry	●	●	●	●
	Global closing (central closing of all windows through key fob)	–	●	●	●
Deadlocking		●	●	●	●
Rear Parking Camera:	Rear-view monitor for reverse parking [tied to navigation system]	–	–	–	●
Power steering:	Electro Hydraulic Power Assisted Steering (EHPAS) (petrol engines)	●	●	●	●
	Engine, rev. sensing (diesel engines)	●	●	●	●
Air conditioning:	Manual	●	●	–	–
	Climate control	–	–	●	●
Sunvisors:	Driver's with covered vanity mirror and ticket holder	●	●	●	●
	Passenger's with covered vanity mirror	●	●	●	●
Fuel cap, remote opening		●	●	●	●

Interior Features

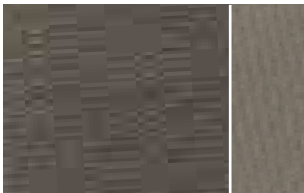
Seats and integral head restraint:	Driver's, dial reclining and height adjustment	●	●	●	●
	Driver's armrest	●	●	●	●
	Driver's, lumbar adjustment	–	●	●	●
	Picnic table (back of front seats)	–	●	●	●
Rear seats:	Second row sliding seats	●	●	●	●
	Three second row head restraints, height adjustable	●	●	●	●
	Two third row head restraints, height adjustable	●	●	●	●
	Second row seat recliner adjustment and double fold-mechanism	●	●	●	●
	Second row Karakuri seat which converts the two individual second row seats into a 3-person bench seat	●	●	●	●
	Second row outer armrests	–	●	●	●
	Third row 50/50 split fold	●	●	●	●
Steering wheel:	Leather-wrapped	–	●	●	●
	Tilt and height adjustment	●	●	●	●
Shift knob:	Leather-wrapped	–	●	●	●
Door inner handles and trim insert:	Front, silver	–	–	●	●
Grab handle, front passenger's and two rear with coat hooks		●	●	●	●
Audio and Navigation System:	AM/FM radio / CD, four speakers	●	●	–	–
	AM/FM radio / 6-CD autochanger, six speakers	–	–	●	●
	DVD navigation system, 7" colour pop up screen, two display functions, with voice control and voice guidance (and rear-view parking camera)	–	–	–	●
Steering wheel-mounted remote audio controls	–	●	●	●	
Meter set:	Tachometer	●	●	●	●
	Fuel gauge	●	●	●	●
	Water temperature gauge	●	●	●	●
	Trip computer	–	–	●	●
	Exterior temperature thermometer, digital	●	●	●	●
Digital clock	●	●	●	●	
Cigar lighter	●	●	●	●	
Overhead console with sunglasses holder (not available with optional sunroof)	–	●	●	●	
Further storage spaces:	11-litre glovebox	●	●	●	●
	Seat-back pocket	●	●	●	●
	Karakuri storage box (can be used when seventh seat is not in use)	–	●	●	●
	Underboot floor storage box	●	●	●	●
Interior light, dome with integral spotlight	●	●	●	●	
Luggage area cover	●	●	●	●	
Luggage compartment light	●	●	●	●	
Pollen filter	●	●	●	●	

● = Standard.
– = Not available.

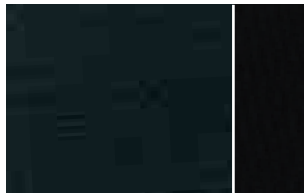
Colours and Seat Trims.

Model	TS	TS ²	Sport	Sport Nav
Trim	Khaki	Black / Blue	Black	Black
Solid Body Colours				
Brilliant Black	●	●	●	●
Mica and Metallic Body Colours*				
Galaxy Grey Mica	●	●	●	●
Phantom Blue Mica	●	●	●	●
Stellar Silver Metallic	●	●	●	●
Strato Blue Mica	●	●	●	●
Sunlight Silver Metallic	●	●	●	●

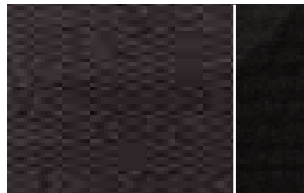
● = Available.
 * Option, at extra cost.



Khaki



Black / Blue



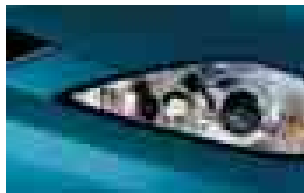
Black



Brilliant Black



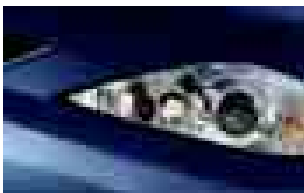
Galaxy Grey Mica



Phantom Blue Mica



Stellar Silver Metallic



Strato Blue Mica



Sunlight Silver Metallic



Mazda Products and Services.

Warranty Plus – 3-Year Cover

Every Mazda is designed and built to the highest standards of performance, comfort and reliability. For your further reassurance, Mazda also provides a full 3-year / 60,000 mile¹ warranty cover, including Mazda European Assistance, 3-year paintwork warranty and a 12-year anti-perforation warranty.
¹There is no mileage limit during the first year of the warranty.

Mazda Momentum – New Vehicle Extended Warranty

At any time during the manufacturer's warranty period, you may purchase a Mazda Momentum extended warranty package. Three options are available. Your Mazda dealer will be pleased to provide you with details.

Mazda Credit*

Mazda offers a variety of finance, leasing and payment protection schemes to suit the needs of both private and business customers. With our wide choice of plans and services, no-one is more committed to delivering complete motoring confidence and total peace of mind than Mazda and Mazda Credit.

Mazda MultiOption – Economical payments protected by any fall in car values, with three options to choose from at the end of the agreement.

Mazda MultiOption Cashplan – All the benefits of MultiOption but with no regular payments.

Mazda Hire Purchase – A simple, straightforward and traditional funding plan.

Mazda Business Partner

As a Mazda corporate customer, you'll find that Mazda vehicles are designed to fulfil the diverse needs of a modern company. Our corporate service offers attractive purchase prices, low running costs and market-driven residual values, resulting in extremely competitive ownership costs.

Mazda Digital Service Record

The Mazda Digital Service Record (DSR) system provides increased security against counterfeit service documents and odometer tampering, and makes it easy to keep the service history up to date. Stored on a central database, the DSR replaces the traditional paper service book and ensures a secure, accurate and permanent service history for the life of the vehicle.

Your Mazda dealer:

Mazda Motors UK Limited reserves the right to introduce changes in specification and equipment due to its ongoing product development. Colour and trim samples shown in this brochure may vary from the actual colours because of the limitations of the printing process. It is recommended that you consult your Mazda dealer when referring to these.

*Finance subject to status. Guarantees / Indemnities may be required.

Written quotations: Mazda Credit UK, Central Office, Eagle Way, Brentwood, Essex CM13 3AR.

Authorised and regulated by the Financial Services Authority.

October 2006.

Internet: www.mazda.co.uk

Mazda Helpline: 08457 48 48 48