

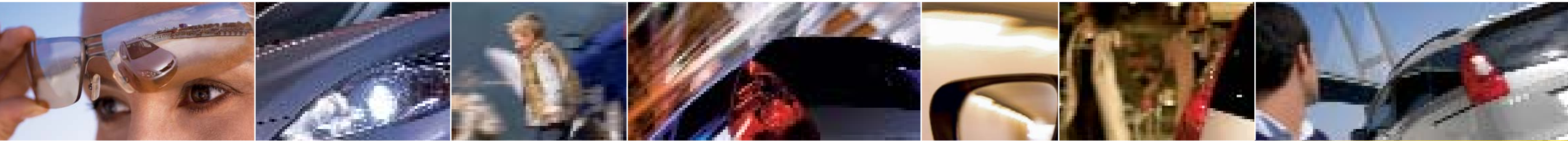


Mazda5



zoom-zoom

Mazda5



4 **Unmistakable presence**

Expressive exterior design.

6 **Driving passion**

A range of responsive engines.

10 **Beauty meets innovation**

Interior design and functionality.

21 **In safe hands**

Trusted safety features.

22 **Mazda5. It's your choice**

Select your grade and choose your accessories.

Mazda5 TS

Mazda5 TS²

Mazda5 Sport

Mazda5 Sport Nav

29 **Into tomorrow with Mazda**

Mazda Credit and Insurance.

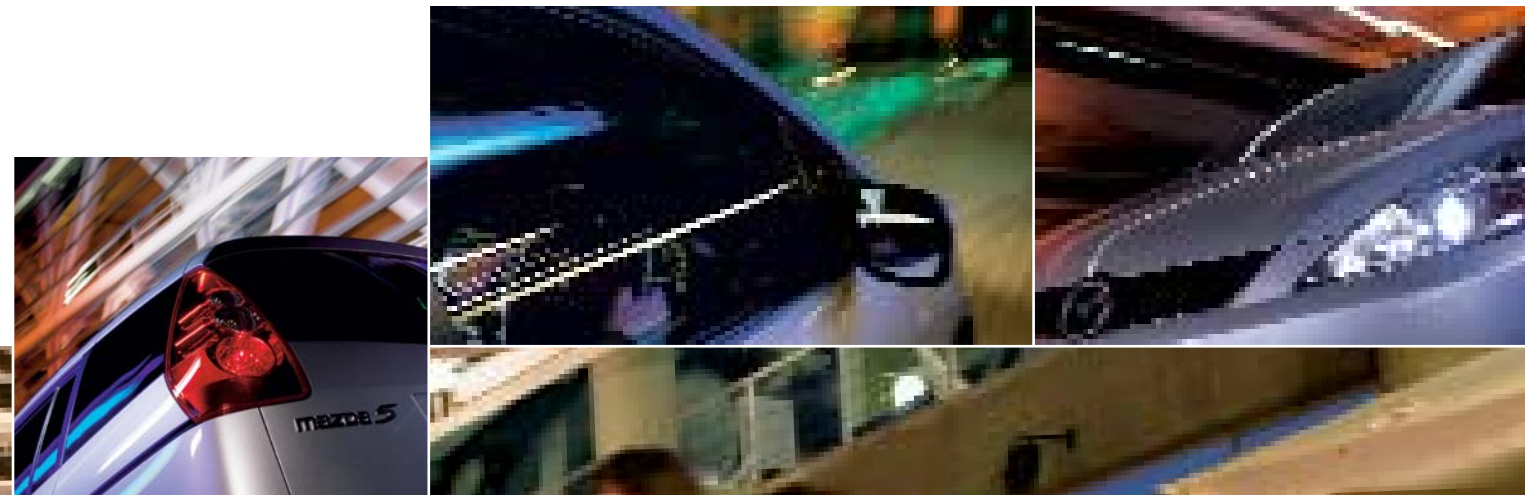
Deep inside us all, there's a uniquely human emotion just waiting for an invitation to 'come out and play'. It's a feeling of pure exuberance and exhilaration – the emotion of motion. We call it Zoom-Zoom. Take a closer look at the Mazda5 and you'll discover a driving experience that's surprisingly stimulating.



Unmistakable presence

Your lifestyle may change, but time shouldn't have to stand still. Discover the Mazda5 and celebrate your passion for living.

When we designed the Mazda5, the rulebook was nowhere in sight. Sleek, flowing lines and sculpted surfaces ooze Mazda's sporty personality. A functional daytime compact Multi Activity Vehicle (MAV) becomes a stylish night-time companion. Mazda5 simply refuses to conform.



Driving passion

From one sunrise to the next, Mazda5 delivers a drive so stimulating, you'll indulge your passion for driving every time you take to the road.





6-speed transmission.

The 6-speed manual transmission is available with both of Mazda5's diesel engines, contributing to low fuel consumption, greater driving pleasure and refinement.



MZR-CD common-rail turbo diesel engines.

With the choice of standard-power delivering up to 310Nm and high-power delivering up to 360Nm at 2000rpm, the MZR-CD engines combine useable power with high fuel economy, low emissions and minimal noise, vibration and harshness.



Diesel Particulate Filter.

The powerful MZR-CD common-rail turbo diesel engines come with a Diesel Particulate Filter for superior emissions control.

At the heart of Mazda5's energising drive is a range of powerful and responsive engines.

There's a choice of two petrol engines; 1.8-litre MZR 115ps (85kW) and 2.0-litre MZR 145ps (107kW), both combined with a smooth, 5-speed manual transmission. Then there are two versions of the impressive common-rail turbo diesel engine – 2.0-litre MZR-CD 110ps (81kW) and 2.0-litre MZR-CD 143ps (105kW), which are combined with a newly-developed 6-speed manual transmission. Plus, both engines come with a Diesel Particulate Filter as standard. All Mazda5 engines are fully compliant with Euro Stage IV emissions standards.

With the Mazda5, you won't be reminiscing about the times when you didn't need a practical, versatile car. You'll be too busy enjoying the invigorating drive.



Picture above shows Mazda5 2.0 Sport with optional metallic paint.

Beauty meets innovation

Intelligently designed to make your life easier, the Mazda5 delivers incredible exterior functionality and a unique versatile interior seating and storage concept.



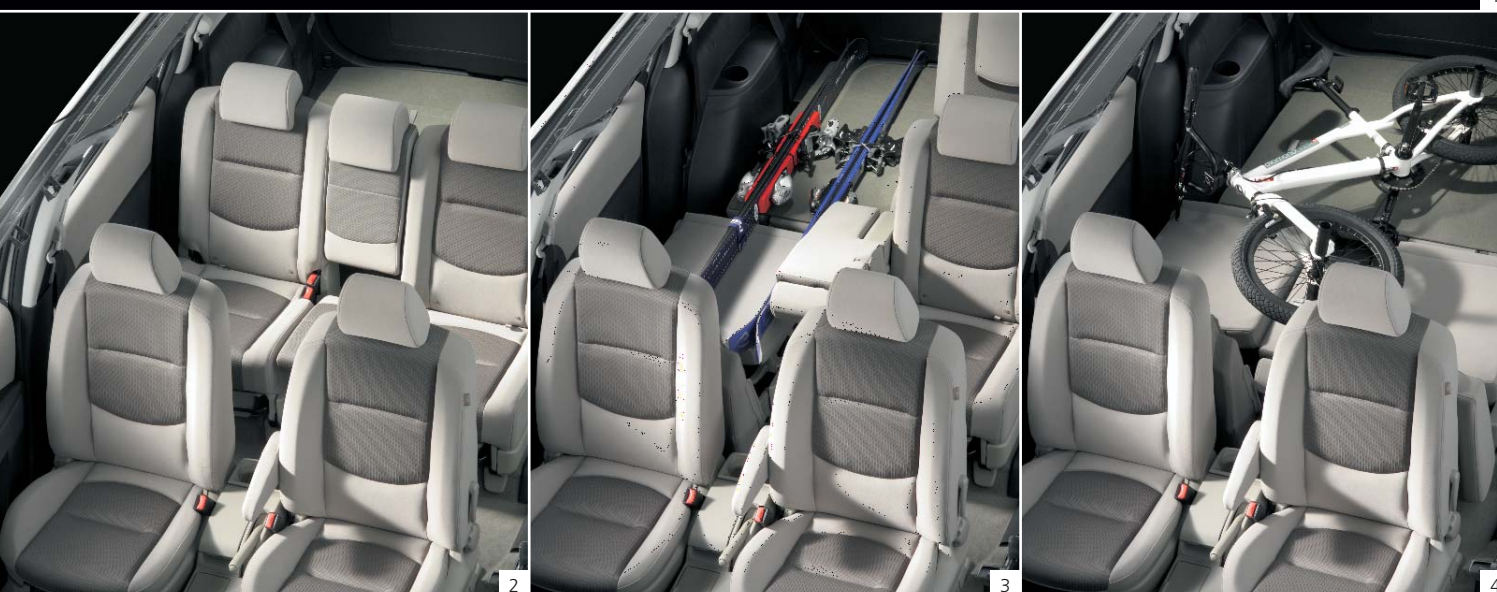


No sacrifices. No compromise. Just clever, functional design that makes the most of your interior space.

The Mazda5's unique sliding rear doors on both sides make it incredibly easy to step in and out, even in tight parking spaces. Their lightweight design also means they can be easily opened and closed with just one hand. And for easier entry and exit for third row passengers, the second row seats slide forward independently with minimum effort.



The unique and innovative Karakuri seating system can transform the cabin in seconds. Use all seven seats, fold five down flat or choose any combination in between to suit your passengers and luggage. You don't even need to remove them to achieve maximum space.



- 1 **7-seater mode.**
The 2-3-2 seating configuration provides full passenger capacity.
- 2 **5-seater mode.**
Increase your rear luggage space by folding down the 50/50 split third row seats.
- 3 **4-seater mode.**
Seats fold flat down one side for storage of long objects.
- 4 **2-seater mode.**
All rear seats fold flat for maximum cargo room – no need to remove them.
- 5 **Innovative and convenient.**
A spacious compartment is revealed when the left-hand seat in the second row is folded out.
- 6 **Karakuri storage box.**
The right-hand second row seat contains the Karakuri storage box with integrated cargo net and two cup holders.
- 7 **Rear seat access.**
The centre seatback in the second row can be easily rotated to allow access to the third row seats.



Attention to detail is one thing. But when even the details have details – that can only be Mazda quality.

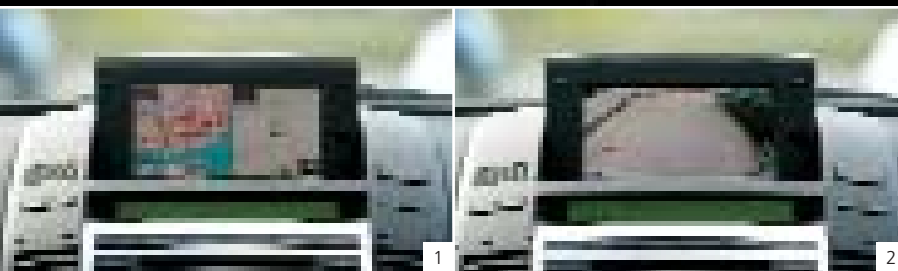
From the expertly crafted instrument dials to the cushioned door trim, everything about the Mazda5 says 'indulge yourself'. With its stylish, user-friendly interior, the Mazda5 is an incredibly stimulating place to be. A sweeping silver-coloured instrument panel and switch bezels on the doors make a striking impression, while the smooth gear lever mounted high in the centre console adds to the uncluttered design.



Express your personality

Everything about you is unique. And that's why the Mazda5 is not only available in four distinct grades, but also with a wide range of interior and exterior accessories. Every car can be tailored to meet your exact requirements, ensuring looks and personality that are as unique as your own.

- 1 iPod connection.
- 2 17" alloy wheels.
- 3 Bluetooth Handsfree kit.
- 4 Roof cross bars shown with Thule ProRide 591 bicycle carrier.
- 5 Front and rear parking aid sensors.
- 6 NaviMaster (by Siemens VDO) portable satellite navigation system.
- 7 Scuff plate set.
- 8 Sports appearance pack.



Even before you set off, Mazda5 already knows the best route, thanks to its impressive DVD satellite navigation system.

Available as standard on the Mazda5 Sport Nav, this is combined with the clever rear-view parking camera, allowing you to reverse safely and easily – even into those tighter spaces. It's all part of Mazda5's love for innovative, relevant technology.

- 1 **DVD satellite navigation.**
The 7" colour screen of the DVD navigation system emerges from the dashboard at the touch of a button.
- 2 **Rear-view parking camera.**
A rear-mounted video camera enables you to reverse safely by displaying the view behind the vehicle on the navigation monitor. Moving gridlines are added to help the driver position the vehicle correctly.





In safe hands

Night or day, rain or shine, Mazda5 is prepared for the unexpected.



With its command driving position, Mazda5 gives you excellent visibility for a safer drive. Active safety features like the Anti-lock Braking System (ABS), Electronic Brake-force Distribution (EBD) system and Emergency Brake Assist (EBA) are standard on every Mazda5. Dynamic Stability Control (DSC) and Traction Control System (TCS) are standard on Mazda5 Sport and Sport Nav, giving you extra control on slippery surfaces.

The Mazda5 provides you with the very best safety as demonstrated by it being awarded the maximum 5-star Euro NCAP rating for adult occupation protection. As well as driver, front passenger, front side and curtain airbags as standard for all three seating rows, the Mazda5 comes with the Mazda Advanced Impact Distribution and Absorption System (MAIDAS), which minimises deformation and disperses impact energy in a collision. Combine this with the standard ISOFIX child seat anchorages in the second row and seatbelt reminders for front passengers and the Mazda5 offers you and your passengers the ultimate protection. And of course, Mazda's proven reliability completes Mazda5's comprehensive attention to safety.

- 1 **Airbag system.**
Driver, front passenger, front side and curtain airbags.
- 2 **Dynamic Stability Control.**
For added control on slippery road surfaces.
- 3 **Anti-lock Braking System.**
A 4-wheel Anti-lock Braking System with Electronic Brake-force Distribution (EBD) for peace of mind.



Mazda5 TS



- Six airbag system.
- Tonneau cover.
- Jack-knife key.
- Air conditioning.
- Single CD player.
- Electric front windows.
- ABS with Electronic Brake-force Distribution (EBD).
- Emergency Brake Assist (EBA).
- Remote central locking with deadlocks.

The Mazda5 TS comes with body-coloured bumpers and Khaki interior trim package. With a choice of the 1.8-litre MZR 115ps (85kW) or 2.0-litre MZR-CD 110ps (81kW) engines, you'll enjoy the convenience of electric front windows, CD player and remote central locking (with deadlocks), plus the added protection of an airbag system with dual front, front side, and curtain airbags for all three seating rows.

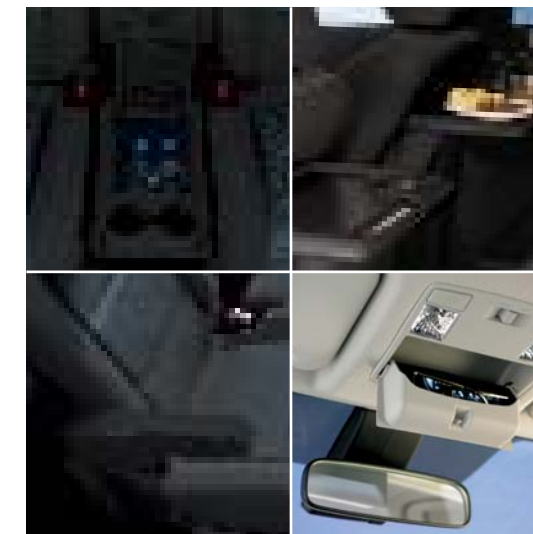




Mazda5 TS²

Additional TS² features over the TS:

- Karakuri storage box.
- Picnic trays for second row.
- Second row outer armrests.
- Overhead console with sunglasses holder*.
- Electric rear windows (with remote global closure).
- 16" alloy wheels.
- Lumbar support for driver seat.
- Leather steering wheel with audio controls.
- Roof rails.
- Body-coloured mirrors and handles.



The Mazda5 TS² is offered with a choice of three engines: a 1.8-litre MZR 115ps (85kW) or a 2.0-litre MZR 145ps (107kW) petrol; and a 2.0-litre MZR-CD 110ps (81kW) diesel engine. Further luxury comes in the shape of stunning 16" alloy wheels, stylish roof rails and an array of extra features. The Mazda5 TS² also includes electric front and rear windows with a remote global closing function, body-coloured power-operated heated door mirrors, manual air conditioning and steering wheel-mounted audio controls.

*Not available with optional sunroof.



Mazda5 Sport and Sport Nav



Additional features over the TS²:

- 6-CD autochanger with six speakers.
- Rear spoiler.
- Front fog lights.
- 17" alloy wheels.
- Dynamic Stability Control (DSC) with Traction Control System (TCS).
- Climate control air conditioning.
- Privacy glass (second and third rows).
- Trip computer.
- Auto lights.
- Rain sensing wipers.

The Mazda5 Sport brings even more to the Zoom-Zoom experience. You can choose from two powerful 2.0-litre MZR 145ps (107kW) and 2.0-litre MZR-CD 143ps (105kW) engines, while 17" alloy wheels, rear spoiler and front fog lights come as standard.

The Mazda5 Sport Nav derivative adds DVD satellite navigation system (with rear-view parking camera) as standard. An electric tilt-and-slide sunroof is available as an option on Sport models*.

*Petrol model only.





Into tomorrow with Mazda

Mazda Credit for private customers*.

Mazda Credit provides you with the opportunity to drive your new Mazda using either the more traditional Mazda Hire Purchase plan or the flexible Mazda MultiOption plan.

Finance is fast and easy to arrange at your Mazda dealer as all dealers are linked directly on-line to the Mazda Credit System.

Mazda Insurance.**

Mazda Insurance offers a range of specially tailored motoring related insurance protection, designed to provide you with total motoring peace of mind. Our cover includes Mazda Motor Insurance, Payment Protection Plan and Guaranteed Asset Protection (GAP).

Mazda Business Partner*.

Mazda Business Partner is dedicated to partnering businesses. We take confidence in the comprehensive range of well-proven finance and leasing products for business customers with nationwide coverage and consistently competitive prices.

You can also access more information about Mazda Credit and its finance products at www.mazda.co.uk or by contacting your local Mazda dealer, who will be pleased to provide you with a personalised quotation for the Mazda of your choice.

*Finance subject to status. Guarantees/Indemnities may be required. Written quotations: Mazda Credit UK, Central Office, Eagle Way, Brentwood, Essex CM13 3AR.

**Mazda Motor Insurance is underwritten by Zurich Insurance Company, a limited company incorporated in Switzerland. Registered in the canton of Zurich No. 3.749.620.01. UK branch registered in England, No. BR105. Registered Office: Zurich House, Stanhope Road, Portsmouth, Hampshire PO1 1DU.

A member of the General Insurance Standards Council and Financial Ombudsman Service. Telephone calls may be recorded or monitored for training purposes.

Mazda Insurance Payment Protection Plan is underwritten by Norwich Union Insurance Ltd. Registered in England, No. 99122. Registered Office: 8 Surrey Street, Norwich NR1 3NG. Member of the General Insurance Standards Council Norwich Union Life & Pensions Limited. Registered in England No. 3253947. Registered Office: 2 Rougier Street, York YO90 1UU. Both companies are part of the Aviva group.

Mazda Insurance Finance Gap and Invoice Gap are underwritten by Mapfre Asistencia Compania Internacional De Seguros Y Reaseguros SA, 22-26 Prospect Hill, Galway, Republic of Ireland, Registered in Ireland with No 903874.

Authorised and regulated by the Financial Services Authority.





The Mazda Warranties.

3-year new car warranty up to 60,000 miles.

The Mazda new car warranty applies for 3 years up to 60,000 miles, typical wearing parts are not covered by this warranty.

12-year warranty against corrosion breakthrough.

The warranty against corrosion breakthrough lasts 12 years.

3-year paintwork warranty.

The Mazda paintwork warranty lasts 3 years, regardless of mileage. If any problems with the paintwork arise during this period, they will be rectified by a Mazda authorised dealer / repairer, provided the manufacturer is responsible for the defects.

Mazda Digital Service Record

The Mazda Digital Service Record (DSR) system provides increased security against counterfeit service documents and odometer tampering, and makes it easy to keep the service history up to date. Stored on a central database, the DSR replaces the traditional paper service book and ensures a secure, accurate and permanent service history for the life of the vehicle.

Your Mazda dealer:

Part No. MCAG1066A 06/07 (BJN 304211/UKV1)

Mazda Motors UK Limited reserves the right to introduce changes in specification and equipment due to its ongoing product development. Colour and trim samples shown in this brochure may vary from the actual colours because of the limitations of the printing process. It is recommended that you consult your Mazda dealer when referring to these.

*Finance subject to status. Guarantees / Indemnities may be required.
Written quotations: Mazda Credit UK, Central Office, Eagle Way, Brentwood, Essex CM13 3AR.

Authorised and regulated by the Financial Services Authority.

June 2007.

Internet: www.mazda.co.uk
Mazda Helpline: 08457 48 48 48