

BLS



Cadillac

THE LUXURY PERFORMANCE SEDAN AND WAGON



Cadillac

THE ROAD OPENS. THE LANES WIDEN. THE SPIRIT BEGINS TO MOVE YOU.

YOU PRESS THE ACCELERATOR AND LET THE RUSH OF POWER FREE YOUR MIND OF DISTRACTIONS.
AS YOUR SPEED INCREASES, STRESS FADES INTO THE RECEDING SUNLIGHT. NOW THERE ARE
NO DEADLINES. NO PRESSURE. YOU ARE IN CONTROL.

WHILE YOUR EYES FOCUS ON THE ROAD AHEAD, YOUR BODY SURRENDERS TO THE SOFT
LEATHER THAT SURROUNDS YOU. RELAXATION OVERTAKES TENSION. INSTINCT REPLACES
CONSCIOUS THOUGHT. YOUR CONFIDENCE BUILDS WITH EACH TOUCH OF THE WHEEL
AS YOU EFFORTLESSLY GLIDE PAST THE TRAFFIC, EVERY MILE MAKING YOU MORE PREPARED
FOR WHAT COMES NEXT.

ANOTHER JOURNEY. ANOTHER OPPORTUNITY TO ENJOY THE LUXURIOUS PERFORMANCE AND
CONTROL OF THE BLS. AFTER ALL, IT'S MORE THAN A CAR. IT'S A CADILLAC.





EUROPEAN DRIVING. AS DEFINED BY THE DRIVEN.

To appreciate what gives the Cadillac BLS such a unique character, you first need to understand where it was born. Both the BLS Sedan and Wagon were designed, built and tested in Europe. The reason is simple logic. Our goal was to create the finest mid-size performance car on the Continent. So before a single sketch was created, we relentlessly focused on every factor that contributes to true European drive quality and attitude. Then we injected the ingredients that make a car a Cadillac. Extreme innovation in style and technology. Exceptional luxury on every surface. The result is a vehicle that is as aerodynamic as it is gorgeous. As confident in a tight S-bend as it is on a long, straight motorway. Put the BLS through its paces and feel the difference for yourself.





EXPRESSIVE DESIGN

The design of the BLS follows the Art & Science philosophy of Cadillac.

At its heart is the goal of creating a car as intelligent as it is beautiful, using cutting-edge technology to give its style true purpose. The BLS takes our philosophy to an entirely new level. From its high muscular shoulders and sharp geometric tail to the crisp lines that flow from the stacked headlights, every shape is designed to catch the eye and contribute to performance. The result is a Cadillac sedan with a drag coefficient of just 0.31, allowing the air to slip past with minimal effect on road handling, interior comfort and fuel efficiency. So while other drivers will stare in admiration, how long they get to look is up to you.

DYNAMIC DRIVING

Tight bends. Winding mountain roads. Long, flowing curves. To conquer them, the BLS features a perfectly balanced sports chassis. There is no compromise between comfort and control. The finely tuned suspension and steering transmit an intuitive road feel that gives you the confidence to pull through corners with ease, while the long 2,675 mm wheelbase adds stability throughout. Even the aerodynamic tail is designed to create downforce at speed, delivering extra grip exactly when you need it most. Add 18-inch twin-spoke aluminium wheels and a 6-speed automatic with paddle shifters, and you have a Cadillac with an absolute passion to perform.





GENEROUS COMFORT

From its inception, the BLS was designed to provide long distance comfort in an agile mid-size car. That means going beyond ordinary measures of space to ensure rear as well as front passengers have ample room to breathe. While headroom and legroom are among the best in class, the BLS also takes into account more considerate factors such as shoulders and hips – offering more than 1,400 mm of shoulder room and 1,300 mm of hiproom for each of up to four passengers. Combine that with elegant touches such as a soft leather steering wheel and flexible centre rear armrest, and you'll enjoy Cadillac comfort in every sense.



SOPHISTICATED INTERIOR

The true measure of luxury is how it moves you, and the interior of the BLS is designed to inspire. From the moment you slip inside, you are surrounded by the warm touch of woven cloth or leather, offset with Piano Black or Red Walnut highlights. Dual-zone air conditioning gives passengers the freedom to choose their own interior climate. Supportive 8-way power seats are available to let you store the ideal positions of different drivers and front passengers. An advanced steering wheel allows the driver to direct the in-car entertainment, on-board computer, optional DVD satellite navigation and more. Form and function have never worked in such perfect harmony. To deliver such a refined driving experience.





INSPIRED INFOTAINMENT

An extraordinary car demands a sound system to match. Every BLS offers a balanced 7-speaker configuration that includes an AM/FM stereo with graphic display, CD player and MP3 inlet. For those seeking an even greater audio experience, Cadillac joined with Bose® to create centrepoint simulated surround sound as you've never heard it before. Eleven speakers featuring Neodymium technology deliver optimal range to each occupant, matched to a 6-CD changer, MP3 inlet and high-tech sound damping to ensure there are no interruptions from the outside world. Select the optional DVD satellite navigation, and the audio console includes a colour touch screen and clear voice guidance. All of which makes the journey to your destination as rewarding as the act of arriving.



EFFORTLESS VERSATILITY

The BLS Wagon is the first wagon luxurious enough to carry the Cadillac name. But its sophistication and style were well worth the wait. Crisp, clean lines create a tapered effect that gives the BLS a sleek and daring profile. Fine-tuned McPherson struts and a four-link rear axle provide inspired handling even at maximum load capacity, ensuring a drive as dynamic as our BLS Sedan. Inside, all the luxury features of the BLS Sedan are present, with four trim levels that allow you to customise your BLS Wagon with absolute precision. Choose an automatic transmission, and a Sport Mode button also lets you select a more dynamic shift pattern on demand. So you'll never have to compromise performance for added functionality.



SUPREME FLEXIBILITY

Every aspect of the BLS Wagon has been designed to open a new dimension in space and comfort. Fold down the rear seats, and a vast 1,273 litres of cargo room are at your command. Keep the rear seats upright, and you have an impressive 419 litres of loading space, with an extra 12 litres below the floor to keep valuable items out of sight. Now consider the finishing touches that make the BLS Wagon truly individual. The easy-access sliding cargo cover, foldable vertical cargo net, chrome cargo hooks, chrome sill plate and polished silver roof rails all combine functionality and beauty like no other wagon of its class. Creating a Cadillac that will turn heads as easily as it controls a corner.

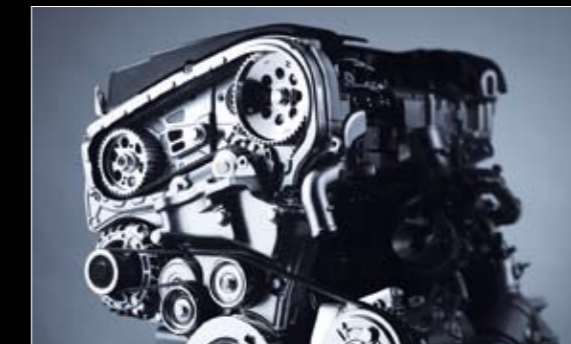






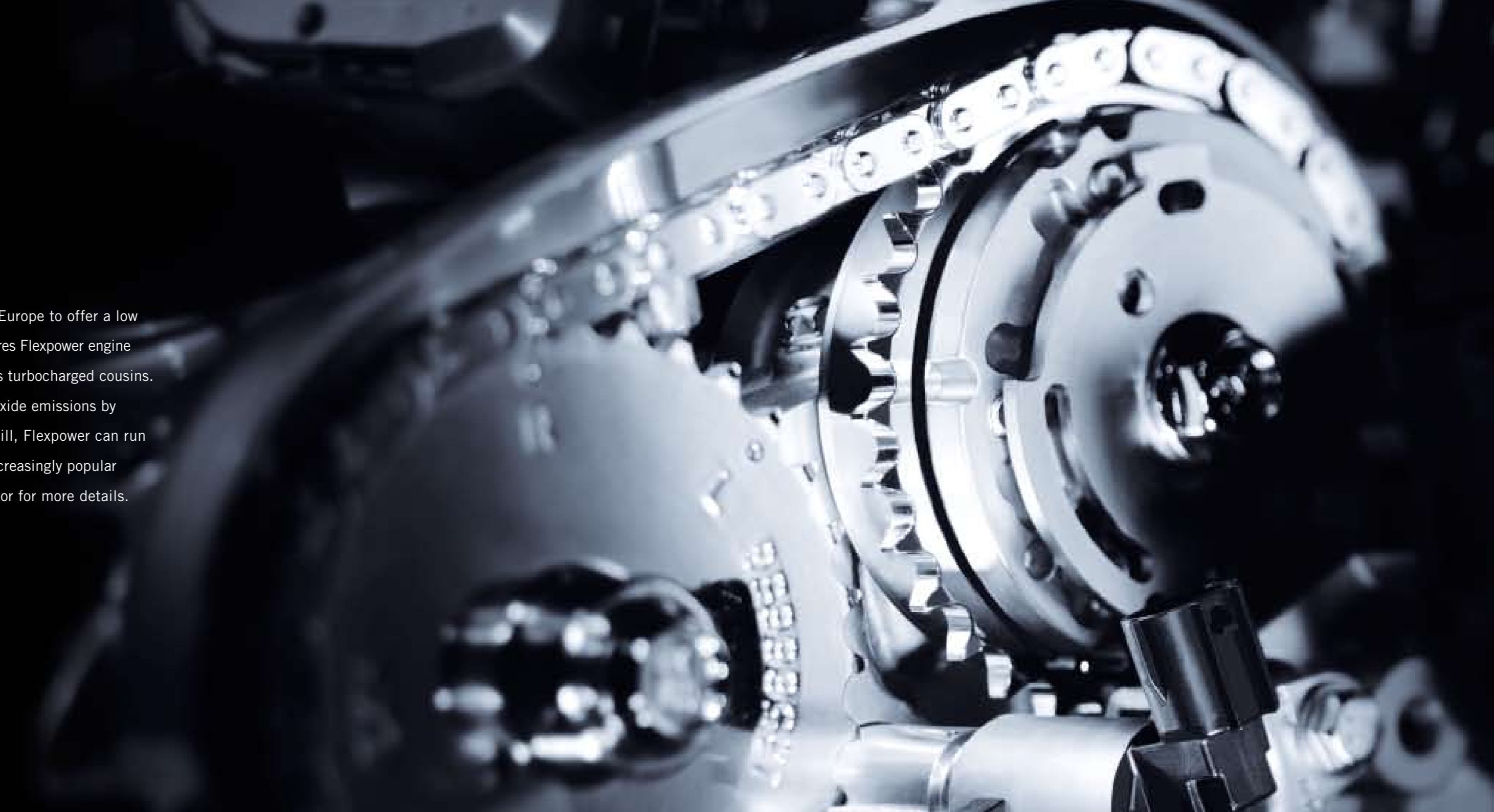
TURBOCHARGED POWER

Every BLS engine is turbocharged to provide rapid acceleration with smooth transfer of power. Leading the pack is our first common rail diesel, a 1.9 litres all-aluminium four-cylinder engine producing 110 kW/150 hp, or a two stage turbo diesel version that delivers a dynamic 132 kW/180 hp. In the petrol family, our 2.0 litres four-cylinder turbo comes in two variants, either a 129 kW/175 hp power plant, or a 154 kW/210 hp engine with 300 Nm of torque. For the ultimate in performance, we also offer a 2.8 litres V6 with a twin-scroll turbocharger that can pump out 188 kW/255 hp and rocket from 0 to 100 km/h in 6.9 seconds. Different engines offer a 5- or 6-speed gearbox, with an automatic transmission available on each. Explore the range and see which one moves you the most.



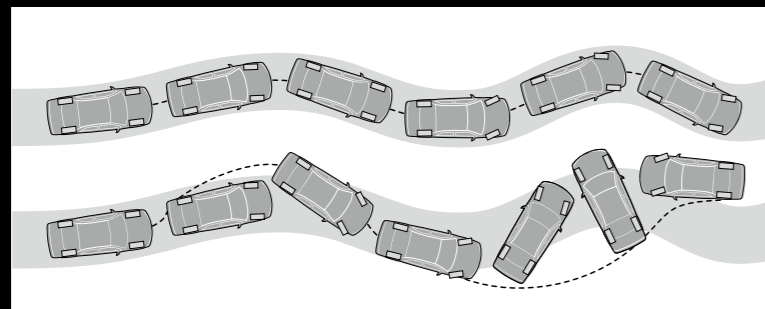
PURE FLEXPOWER

In addition to our standard engine options, the BLS is the first Cadillac model in Europe to offer a low emission, bio-ethanol engine. Designed to run on petrol or bio-ethanol fuel, our 2.0 litres Flexpower engine delivers an impressive 147 kW/200 hp, making it up to 14% more powerful than its turbocharged cousins. Yet Flexpower is much kinder to the environment, reducing typical fossil carbon dioxide emissions by up to 70% when using E85 bio-ethanol (85% bio-ethanol, 15% petrol). Better still, Flexpower can run on bio-ethanol in any proportion up to bio-ethanol E85. With bio-fuels becoming increasingly popular in Europe, now is the time to explore their advantages. Ask your Cadillac distributor for more details.



ADVANCED SAFETY

At Cadillac, safety is never treated as a luxury. The frame of the BLS is reinforced with a steel safety cage featuring deformable body sections to better absorb and spread an impact. Six airbags are joined by active headrests on the front seats and 3-point seatbelts with pretensioners and force limiters to minimize body stress or injury. The latest versions of our ABS and traction control systems are matched to mechanical Brake Assist and Cornering Brake Control to individually assess each wheel's braking requirements. For greater confidence, our innovative StabiliTrak™ stability enhancement system even compensates handling by calculating the line the driver wants to hold. It's the future of automotive safety technology. Brought to life in the BLS.



WITH STABILITRAK™

WITHOUT STABILITRAK™





EXCLUSIVE ACCESSORIES

Whether you're looking for extra flexibility or simply an extra touch of style, Cadillac has a range of accessories to give your BLS a more personal feel. Create a customized profile with a choice of 16", 17" or 18" polished chrome wheels. Maximize your storage capacity with a removable cargo guard and divider, or choose a colour-matched roof box to carry larger items with ease. Even outdoor enthusiasts can get more from their BLS with roof-mounted utility bars and a purpose-built carrier for bikes of any size. For details of these and other BLS accessories, visit your local Cadillac distributor.







Width: 1802 mm

Height: 1471 mm



Wheelbase: 2675 mm

Length: 4680 mm



Wheelbase: 2675 mm

Length: 4716 mm



Width: 1802 mm

Height: 1543 mm

SEDAN

ENGINE AND TRANSMISSION	2.0 T 175 HP	2.0 T FLEXPOWER 200 HP	2.0 T 210 HP	2.8 T V6 255 HP	1.9 D 150 HP	1.9 D 180 HP
Number of cylinders	4	4	4	6	4	4
Displacement (cm ³)	1998	1998	1998	2792	1910	1910
Bore x stroke (mm)	86 x 86	86 x 86	86 x 86	89 x 74.8	82 x 90.4	82 x 90.4
Number of valves	16	16	16	24	16	16
Camshaft location	DOHC	DOHC	DOHC	DOHC	DOHC	DOHC
Fuel type	Unleaded petrol, 95 RON	E85/Unleaded petrol, 95 RON	Unleaded petrol, 95 RON	Unleaded petrol, 95 RON	Diesel	Diesel
Powered axles	FWD	FWD	FWD	FWD	FWD	FWD
Transmission	6-speed manual	6-speed manual	6-speed manual	6-speed manual	6-speed manual	6-speed manual
Transmission (option)	5-speed automatic	5-speed automatic	5-speed automatic	6-speed automatic	6-speed automatic	6-speed automatic
All AT with Driver Shift Control, sport mode and steering wheel control						

PERFORMANCE

Performance (kW/hp/min ⁻¹)	129/175/5500	147/200/5500	154/210/5300	188/255/5500	110/150/4000	132/180/4000
Max. torque (Nm/min ⁻¹)	265/2500–3500	300/2500–4000	300/2500–4000	350/1800–4500	320/2000–2750	400/1850–2750 for MT; 370/1750–3250 for AT
Top speed (km/h) – manual/auto.	215/210	215/210	230/225	245/240	200/195	220/215
Acceleration 0–100 km/h (s) – manual/auto.	8.8/10.0	8.8/10.0	7.9/9.0	6.9/7.8	10.2/11.2	8.7/9.4
Fuel consumption (l/100 km) ¹ – urban (manual/auto.)	11.5/12.9	11.5/12.9 (running on petrol)	11.5/13.7	15.4/16.9	8.1/9.9	7.6/9.6
– extra-urban (manual/auto.)	6.4/6.7	6.4/6.7 (running on petrol)	6.4/6.5	7.1/7.2	4.9/5.6	4.6/5.1
– combined (manual/auto.)	8.3/9.0	8.3/9.0 (running on petrol)	8.5/9.1	10.2/10.8	6.1/7.2	5.7/6.8
CO ₂ emission combined (g/km) – manual/auto.	197/222	197/222 (running on petrol)	199/229	254/274	167/189	170/197
Emissions Particulates (gram)	–	–	–	–	0,002 (0,001)	0,000

MASSES

Curb mass (kg) ^{2, 3} – manual/auto.	1460/1485	1460/1485	1485/1510	1555/1580	1505/1530	1545/1570
Max. permissible mass (kg) – manual/auto.	2010/2030	2010/2030	2010/2040	2080/2110	2060/2080	2080/2110
Max. permissible mass of trailer (kg) – braked	1600	1600	1600	1600	1600	1600
Max. permissible mass of trailer (kg) – unbraked	750	750	750	750	750	750
Max. permissible mass of combination (kg) – braked – manual/auto.	3610/3630	3610/3630	3610/3640	3680/3710	3660/3680	3680/3710
Max. vertical load on coupling point (kg)	75	75	75	75	75	75
Max. permissible roof load (kg)	100	100	100	100	100	100
Max. payload (kg) ⁴ – manual/auto.	550/545	550/545	525/530	525/530	555/545	535/540

DIMENSIONS

Overall length (mm)	4680	4680	4680	4680	4680	4680
Overall width, excl./incl. mirrors (mm)	1802/2038	1802/2038	1802/2038	1802/2038	1802/2038	1802/2038
Overall height (mm)	1471	1471	1471	1471	1471	1471
Wheelbase (mm)	2675	2675	2675	2675	2675	2675
Axle track front/rear (mm)	1524/1506	1524/1506	1524/1506	1524/1506	1524/1506	1524/1506
Headroom front/rear (mm)	988/940	988/940	988/940	988/940	988/940	988/940
Legroom front/rear (mm)	1053/892	1053/892	1053/892	1053/892	1053/892	1053/892
Shoulderroom front/rear (mm)	1414/1402	1414/1402	1414/1402	1414/1402	1414/1402	1414/1402
Hiproom front/rear (mm)	1382/1398	1382/1398	1382/1398	1382/1398	1382/1398	1382/1398
Cargo volume (l)	425	425	425	425	425	425
Fuel tank volume (l)	58	58	58	58	58	58
Turning circle curb to curb (m)	11.9	11.9	11.9	11.9	11.9	11.9

WHEELS

Rim size (inch) (option)	6.5 x 16 (7.5 x 17)	6.5 x 16 (7.5 x 17)	7.5 x 17 (7.5 x 17)	7.5 x 17 (7.5 x 18)	6.5 x 16 (7.5 x 17, 7.5 x 18)	6.5 x 16 (7.5 x 17, 7.5 x 18)
Tyre size (option)	215/55R 16 (225/45R 17)	215/55R 16 (225/45R 17)	235/45R 17 (235/45R 17)	235/45R 17 (225/45R 18)	215/55R 16 (235/45R 17, 225/45R 18)	215/55R 16 (235/45R 17, 225/45R 18)

WAGON

ENGINE AND TRANSMISSION	2.0 T 175 HP	2.0 T FLEXPOWER 200 HP	2.0 T 210 HP	2.8 T V6 255 HP	1.9 D 150 HP	1.9 D 180 HP
Number of cylinders	4	4	4	6	4	4
Displacement (cm ³)	1998	1998	1998	2792	1910	1910
Bore x stroke (mm)	86x86	86x86	86x86	89x74.8	82x90.4	82x90.4
Number of valves	16	16	16	24	16	16
Camshaft location	DOHC	DOHC	DOHC	DOHC	DOHC	DOHC
Fuel type	Unleaded petrol, 95 RON	E85/Unleaded petrol, 95 RON	Unleaded petrol, 95 RON	Unleaded petrol, 95 RON	Diesel	Diesel
Powered axles	FWD	FWD	FWD	FWD	FWD	FWD
Transmission	6-speed manual	6 speed manual	6-speed manual	6-speed manual	6-speed manual	6-speed manual
Transmission (option)	5-speed automatic	5-speed automatic	5-speed automatic	6-speed automatic	6-speed automatic	6-speed automatic
All AT with Driver Shift Control, sport mode and steering wheel control						

PERFORMANCE

Performance (kW/hp/min ⁻¹)	129/175/5500	147/200/5500	154/210/5300	188/255/5500	110/150/4000	132/180/4000
Max. torque (Nm/min ⁻¹)	265/2500–3500	300/2500–4000	300/2500–4000	350/1800–4500	320/2000–2750	400/1850–2750 for MT; 370/1750–3250 for AT
Top speed (km/h) – manual/auto.	210/205	225/220	220/215	240	200/195	215/210
Acceleration 0–100 km/h (s) – manual/auto.	8.8/9.9	8.2/9.2	7.8/8.6	7.4/8.0	10.4/11.5	9.1/9.8
Fuel consumption (l/100 km) ¹ – urban (manual/auto.)	11.5/13.3	11.5/13.3 (running on petrol)	11.5/13.9	16.2/18.0	7.8/9.5	7.8/9.7
– extra-urban (manual/auto.)	6.4/6.9	6.4/6.9 (running on petrol)	6.5/7.1	7.5/7.7	4.8/5.2	4.8/5.2
– combined (manual/auto.)	8.3/9.3	8.3/9.3 (running on petrol)	8.3/9.6	10.7/11.5	6.3/7.1	5.9/6.9
CO ₂ emission combined (g/km) – manual/auto.	197/222	197/222 (running on petrol)	199/233	254/274	159/179	175/202
Emissions Particulates (gram)	–	–	–	–	0,002 (0,001)	0,000

MASSES

Curb mass (kg) ^{2, 3} – manual/auto.	1510/1535	1510/1535	1535/1560	1605/1630	1555/1575	1595/1620
Max. permissible mass (kg) – manual/auto.	2070/2100	2070/2100	2080/2100	2150/2170	2120/2150	2150/2170
Max. permissible mass of trailer (kg) – braked	1600	1600	1600	1600	1600	1600
Max. permissible mass of trailer (kg) – unbraked	750	750	750	750	750	750
Max. permissible mass of combination (kg) – braked – manual/auto.	3670/3700	3670/3700	3680/3700	3750/3770	3720/3750	3750/3770
Max. vertical load on coupling point (kg)	75	75	75	75	75	75
Max. permissible roof load (kg)	100	100	100	100	100	100
Max. payload (kg) ⁴ – manual/auto.	560/565	555/560	545/540	545/540	565/570	555/550

DIMENSIONS

Overall length (mm)	4716	4716	4716	4716	4716	4716
Overall width, excl./incl. mirrors (mm)	1802/2038	1802/2038	1802/2038	1802/2038	1802/2038	1802/2038
Overall height (mm)	1543	1543	1543	1543	1543	1543
Wheelbase (mm)	2675	2675	2675	2675	2675	2675
Axle track front/rear (mm)	1524/1506	1524/1506	1524/1506	1524/1506	1524/1506	1524/1506
Headroom front/rear (mm)	988/987	988/987	988/987	988/987	988/987	988/987
Legroom front/rear (mm)	1053/892	1053/892	1053/892	1053/892	1053/892	1053/892
Shoulderroom front/rear (mm)	1414/1402	1414/1402	1414/1402	1414/1402	1414/1402	1414/1402
Hiproom front/rear (mm)	1382/1398	1382/1398	1382/1398	1382/1398	1382/1398	1382/1398
Cargo volume (l)	419/1273	419/1273	419/1273	419/1273	419/1273	419/1273
Fuel tank volume (l)	58	58	58	58	58	58
Turning circle curb to curb (m)	11.9	11.9	11.9	11.9	11.9	11.9

WHEELS

Rim size (inch) (option)	6.5 x 16 (7.5 x 17)	6.5 x 16 (7.5 x 17)	7.5 x 17 (7.5 x 17)	7.5 x 17 (7.5 x 18)	6.5 x 16 (7.5 x 17, 7.5 x 18)	6.5 x 16 (7.5 x 17, 7.5 x 18)
Tyre size (option)	215/55R 16 (225/45R 17)	215/55R 16 (225/45R 17)	235/45R 17 (235/45R 17)	235/45R 17 (225/45R 18)	215/55R 16 (235/45R 17, 225/45R 18)	215/55R 16 (235/45R 17, 225/45R 18)

¹ In accordance with 1999/100/EC (petrol), 2004/3 (diesel). (Optional equipment, maintenance, driving behaviour, road and weather conditions may affect the official results.)

² Minimum curb mass. Figures in accordance with EC Directive. Curb mass condition is without driver and including coolant, oils, fuel, spare wheel and tools.

³ Based on the minimum mass in running order minus 75 kg.

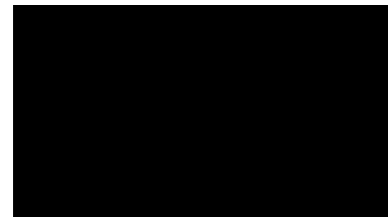
⁴ If curb mass increases, consequently payload will decrease in inverse proportion.

ENGINE, TRANSMISSION, CHASSIS	BUSINESS	ELEGANCE	SPORT	SPORT LUXURY
2.0 T 175 hp 6-speed manual transmission	•	•	•	–
2.0 T 175 hp 5-speed automatic with Driver Shift Control and Paddle Shift and Sport Mode	○	○	○	–
2.0 T Flexpower 200 hp 6-speed manual transmission	•	•	•	–
2.0 T Flexpower 200 hp 5-speed automatic with Driver Shift Control and Paddle Shift and Sport Mode	○	○	○	–
2.0 T 210 hp 6-speed manual transmission	–	•	•	–
2.0 T 210 hp 5-speed automatic with Driver Shift Control and Paddle Shift and Sport Mode	–	○	○	–
2.8 T V6 255 hp 6-speed manual transmission	–	•	•	•
2.8 T V6 255 hp 6-speed automatic with Driver Shift Control and Paddle Shift and Sport Mode	–	○	○	○
1.9 D 150 hp 6-speed manual transmission	•	•	•	–
1.9 D 150 hp 6-speed automatic with Driver Shift Control and Paddle Shift and Sport Mode	○	○	○	–
1.9 D 180 hp 6-speed manual transmission	•	•	•	•
1.9 D 180 hp 6-speed automatic with Driver Shift Control and Paddle Shift and Sport Mode	○	○	○	○
Front-wheel drive	•	•	•	•
Suspension front, McPherson struts, gas shock absorbers, anti-roll bar, hydro-formed subframe	•	•	•	•
Suspension rear, independent, 4-link, coil springs, gas shock absorbers, anti-roll bar, subframe	•	•	•	•
Power steering	•	•	•	•
SAFETY AND SECURITY				
Airbags (frontal; side-impact for driver and front passenger; Head curtain for front and outboard rear passengers)	•	•	•	•
Child security rear door locks	•	•	•	•
Active front seat head restraints to help prevent whiplash	•	•	•	•
Rear centre headrest	○	•	•	•
Anti-lock Braking System (ABS)	•	•	•	•
Traction control	•	•	•	•
Theft-deterrent alarm system, includes dead-lock function on all side doors	○	○	○	○
StabiliTrak™, vehicle stability enhancement system	•	•	•	•
Tyre Pressure Monitoring system	–	–	•	•
EXTERIOR				
Outside rear-view mirrors, power adjusting, heated	•	•	•	•
Tyres, 215/55 R 16	•	–	–	–
Tyres, 235/45 R 17	○	•	–	–
Wheels, 6.5 x 16 aluminium, 7 spoke	•	–	–	–
Wheels, 7.5 x 17 aluminium, 7 spoke ¹	○	○	–	–
Wheels, 7.5 x 17 aluminium, 7 spoke	–	•	–	–
Roof rail ²	•	•	•	•
Metallic paint	○	○	○	○
INTERIOR				
Cupholders, 2 fixed in front console	•	–	–	–
Cupholders, 4 total, 2 front and 2 additional retractable in rear seat	–	•	•	•
Leather-wrapped steering wheel	•	•	•	•
Piano Black interior	•	–	–	–
Red Walnut interior	–	•	–	•
Aluminium interior	–	–	•	–
Cargo cover ²	•	•	•	•
Cargo net (vertical and foldable) load protection for occupants ³	•	•	•	•
Fold up grocery bag holder with hooks incl. floor load net ³	•	•	•	•

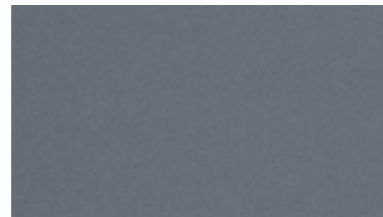
SEATS	BUSINESS	ELEGANCE	SPORT	SPORT LUXURY
Adjustable centre armrest front	•	•	•	•
Centre armrest rear	•	•	•	•
8-way power adjustable driver's seat	–	•	•	•
Heated front seats	○	○	○	•
Leather seating surfaces	○	○	○	–
Leather seating surfaces and wood package	○	–	–	•
COMFORT				
Climate control	•	–	–	–
Dual-zone automatic Electronic Climate Control	–	•	•	•
Digital Information Centre	•	•	•	•
Cruise control	•	•	•	•
Power door locks with programmable automatic locking	•	•	•	•
Power windows front and rear	•	•	•	•
Telescopic adjustment steering wheel	•	•	•	•
Steering wheel controls for sound system and cruise control, includes Driver Information Center toggle switches	•	•	•	•
AUDIO AND COMMUNICATION				
Sound system, AM/FM stereo with monochrome graphic display, CD player, 7-speaker system and MP3/auxiliary inlet	•	•	•	•
Sound system, AM/FM stereo with monochrome graphic display, 6-disc CD changer, Bose® 11-speaker system, RDS and MP3/auxiliary inlet	○	○	○	○
DVD navigation system with single CD player ²	○	○	○	○
DVD navigation system with single CD player and Bose® 11-speaker system	○	○	○	○
Universal hands-free, mobile phone adapter (includes Bluetooth capability)	○	○	○	○
LIGHT AND VISIBILITY				
Front fog lamps	–	•	•	•
Rainsense automatic windscreen wipers (low, medium, high settings)	–	•	•	•
Power glass sunroof	○	○	○	○
Parking Assist	○	○	○	○
Bi-xenon HID headlamps	–	○	○	•
LED taillights ²	•	•	•	•
PACKAGES				
Exclusive Package (Y5C)	–	○	○	•
Memory package, presets for 3 drivers, includes 8-way power driver's seat and driver personalisation functions				
8-way power adjustable passenger seat				
Leather seating surfaces				
Heated front seats (3-position controls: off, low, high)				
Visibility Package (Y5A)	–	○	○	○
Electrochromic interior rear-view mirror (light-sensitive, auto dimming)				
Exterior rear-view mirrors, power folding and auto dimming on driver's side				
Rear Parking Assist				
Handling Sport Package (Y5B)	–	○	•	•
Sports chassis, lowered, tuned for handling				
Tyres, 225/45 R 18				
Wheels, 7.5 x 18 aluminium, 7 spoke				
Prestige Package³	○	○	–	–
Leather seating surfaces				
DVD navigation with single CD player				
Bose® 11-speaker system				
Red Walnut interior	○	•	–	•

¹ N.a. on V6. ² Wagon only. ³ Please check your local price list for specific Prestige offer for your country.

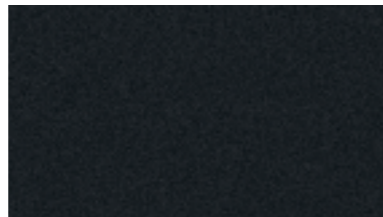
EXTERIOR



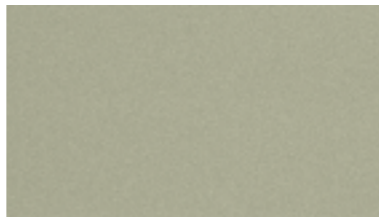
Black



Titan Grey Metallic

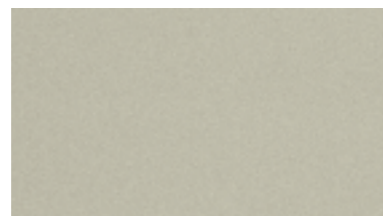


Jet Black Metallic



Pepper Green Metallic

Quicksilver Metallic



Parchment Silver Metallic



Nocturne Blue Metallic

INTERIOR



Leather Ebony



Woven Cloth Ebony



Leather Parchment



Woven Cloth Parchment

CADILLAC ADVANTAGES

Dealer network

Whether you're at home or on the road, our Cadillac dealer network is there to offer you nothing less than truly personal assistance. Count on us to arrange service appointments, answer questions about your new Cadillac, and ensure you're always satisfied with your ownership experience. To find the Cadillac dealer closest to you, visit www.cadillac.com or call 00 80 00-CADILLAC (00 80 00-2 23 45 52).

Warranty

As a Cadillac owner, you expect nothing less than premium service and protection. Which is why your new Cadillac comes with a full 3-year or 100,000 km warranty (whichever comes first), plus a 6-year anticorrosion guarantee. All backed by an experienced Cadillac service team that will handle any issues with confidence and care. For more details, ask your local dealer or call 00 80 00-CADILLAC (00 80 00-2 23 45 52).

Cadillac Assistance

In the event of a roadside emergency, help is only a phone call away. Simply contact Cadillac Assistance, and we'll come to you as quickly as possible – 24 hours a day, 365 days a year. If we can't return you to the road straight away, we'll drive you to the nearest Cadillac dealer, and provide you with a hire car until your vehicle is fully repaired. Cadillac Assistance is yours free of charge for a period of 36 months from the date of registration.

Leasing and insurance

From tailored lease arrangements to competitive insurance quotes, Cadillac can create a complete package to give you added flexibility and assurance. Visit your local Cadillac dealer at any time to discuss your requirements and explore the opportunities in more detail. You can also visit www.cadillac.com or call 00 80 00-CADILLAC (00 80 00-2 23 45 52) for information on our latest offers.



www.cadillac.com