

“One must keep chasing one’s
dreams” Soichiro Honda



Civic

5 Door



Honda (UK) - Cars 470 London Road, Slough, Berkshire, SL3 8QY
Honda Contact Centre - Telephone: 0845 200 8000 www.honda.co.uk
A division of Honda Motor Europe Ltd. No. 857969 Registered in England and Wales Part No: BEZ-290 Issue Date: 11/07

Please don't bin me
pass me on to a
friend or recycle me.







The pulp in the manufacture of this paper is from renewable timber produced on a fully sustainable basis.
The paper used in this brochure is manufactured using ECF (Elemental Chlorine Free) pulp.



impossible to build?

There are more similarities between the HondaJet and the Civic than you might think - when the engineers first saw the radical designs both were thought impossible to build.

With its unique 'over the wing' engine design, the HondaJet allows for more cabin space within the plane and a reduction in drag at higher speeds, delivering a 30-35% higher fuel efficiency than conventional aircraft. Similarly in the Civic, by reshaping the engine and fuel tank we were able to open up the interior space to create a hidden versatility - Magic Seats fold to create a flat floor as well as flip up like cinema seats. By challenging expectations, we were able to design a car that looks like a 3 door but with all the practicality of a 5 door. It just goes to show what you can achieve when you reach for the impossible.

-  introduction 05/06
-  exterior design 07/08
-  interior design 15/16
-  performance & safety 23/24
-  options 29/30
-  environment 51/52
-  finance 53/54
-  aftersales 55/56
-  glossary 57/58
-  what's next? 59/60
-  colours 61/62





here's the story

A young Japanese designer imagines a car like nothing before.

He goes to Italy to check out exciting and beautiful things.

He returns with ideas so unconventional people laugh.

They say his car can't be built.

We build it.

With a ground breaking design the Civic has revolutionised the way we drive. It's a 5 door, with the dynamic, sporty look of a 3 door. It's extremely spacious and versatile inside without compromising on quality or comfort. But what makes the Civic really different is its radical approach to the driving experience.

Our aim is simple: we don't want you to just think this is a great car, we want you to feel it.



08

exterior
design





exterior

Let's cut to the chase. This is the most exciting hatchback we've ever built. From its dynamic, radical styling to its aggressive, purposeful stance, it truly is ground breaking. Every angle shows an innovation, an idea, a way of doing things better.

We also looked for inspiration from Europe. Not just for style, but for its various cultural influences. We wanted to create a car that was inspired by the people who would be driving it.

And, just for the record, it's true – when our manufacturing department saw the initial designs they said it couldn't be built. Which is exactly why we knew we had to build it.





Aerodynamics

The front of the Civic is short and low. This creates a much sportier shape and enhances performance. The tapered spoiler set into the curved rear windscreen improves aerodynamics and complements the sleek lines. This shape also makes it water repellent, so there's no need for a wiper.

Design

At the front, wrap-around head lights, triangular fog lights and a low, honeycombed front grille create a distinctive look. At the side, the flush rear door handles enhance the streamlined styling and make the Civic 5 door look like a 3 door. At the back, the rounded rear windscreen and twin exhausts complete the unique triangular design theme.

Practicality

The curved rear window gives you a better view and a bigger boot. Beneath the spoiler you'll find a second, lower rear window that enhances visibility when parking. The high brake light, mounted into the spoiler, makes you more visible. And the glass roof gives you the feeling of even more space.





4



1



2



3



5



6



7



8



9

1. Chrome front door handles continue the triangular theme.

4. The stylish wraparound rear light cluster greatly increases your visibility to other drivers on the road.

7. Triangular twin exhausts complete the unique design.*

2. 17" 7-spoke alloy wheels hint towards the car's sporting nature.†

5. The tapered spoiler set into the curved rear windscreen improves aerodynamics. This shape also makes it water repellent, so there's no need for a wiper.

8. Wing mirrors with integrated indicators provide other road users with greater warning of your intentions.

3. The flush rear door handles enhance the streamlined styling.

6. Front foglights provide added safety when driving in foggy conditions and are standard on Sport, ES and EX models.

9. Wraparound front headlights create a distinctive look.

*Standard on Sport and EX models
†Standard on all 1.8 i-VTEC and 2.2 i-CTDi models

16
interior
design



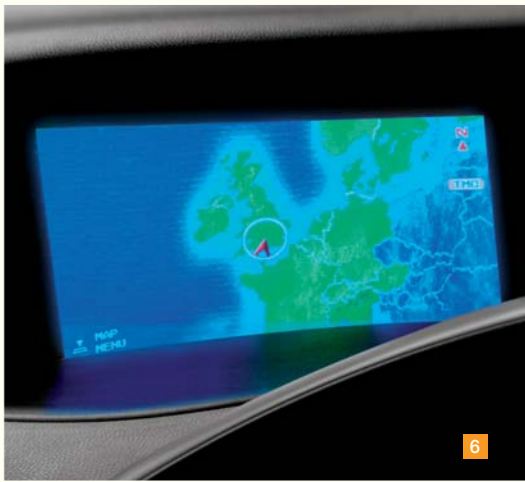


interior

When was the last time you actually felt a connection with the car you were driving? These days more and more cars seem to be taking away that sense of involvement. At Honda, we believe driving should be fun, exciting and involving. That's why the Civic is designed to be an experience for the senses. We want our drivers to feel part of the engineering, to feel an instant connection with everything the car is doing. That's why we've created the Dual Zone driver's environment.

The Multiplex central information display consists of two zones. On the upper zone you'll find climate control, as well as speed and radio information. It's all in your peripheral vision and has the feeling of 'just being there'.

The lower zone contains the multi-function driver computer. This shows average speed, fuel consumption, outside temperature and the distance you can travel before you need to refuel, directly in front of you.



1. Cruise control buttons are mounted on the steering wheel for a more relaxed driving experience.*

4. Dual zone climate control can be independently regulated for both driver and passenger comfort.*

7. With i-SHIFT in manual mode, steering wheel mounted 6-speed paddle shifts deliver improved driver control when changing gear.

2. Satellite Navigation, audio and climate control can all be accessed from this easy to use multi-jog dial.†

5. Tweeters positioned near the steering wheel enhance interior sound.

8. Steering wheel mounted audio controls for ease of use and improved driver safety whilst driving.

3. Wing mirror adjust and window lock controls are positioned close at hand on the door.

6. Voice activated Satellite Navigation will interpret your voice commands to find you the quickest and easiest route home.

9. The red engine start button - where it all begins.

*Standard on ES and EX models
†Standard on EX models



hidden versatility

The Civic challenges expectations in every way.

It can take a full size bicycle directly from the kerbside. The doors open an almost full 90 degrees for easy access. The rear Magic Seats fold flat to the floor to accommodate cargo, as well as flip up like cinema seats, allowing tall and awkward shapes to be stowed easily. This hidden versatility puts the Civic in a class of its own.

Signs of great versatility

You:

- Never say 'Never'. Especially to people with good memories.
- Try everything once. Then try it again.

- Give people a chance. They're only human.

Civic:

- Designed to look like a 3 door but with all the practicality of a 5 door.
- Combines a compact, sporty design with lots of interior space.
- Prefers 'people space' to 'machine space'. Reshaping the engine and fuel tank was somewhat easier than reshaping you.
- Has extra, concealed boot space under a collapsible floor. Perfect for tall objects that require extra space and smaller objects that you want to hide.
- Offers a choice of grey/black sports fabric as standard or optional leather for a more premium feel.

24

performance
& safety

ENGINE
START



performance

At Honda, we understand the importance of combining performance with fuel economy and low emissions. We always have. That's why we've always strived to find new and innovative ways of improving them. With the Civic there is a choice of three different engines: 1.4 i-DSI petrol, 1.8 i-VTEC petrol or 2.2 i-CTDi diesel.

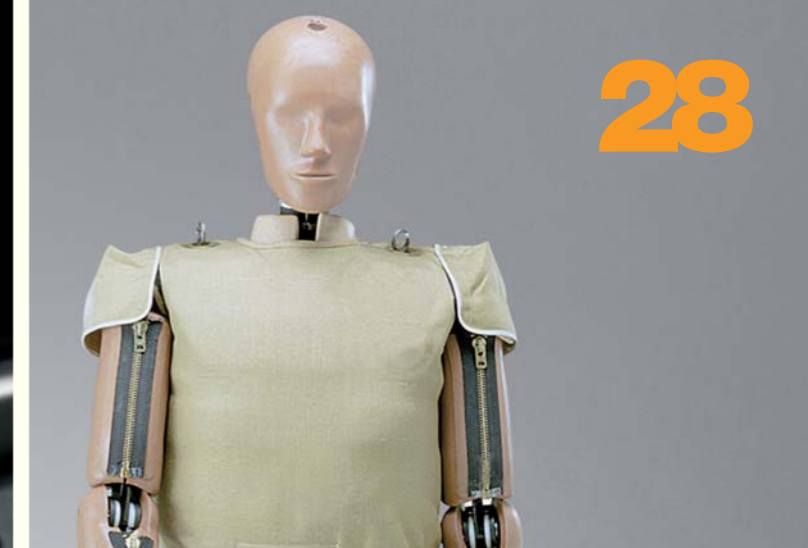
The 1.4 i-DSI engine uses a dual sequential ignition to burn fuel sparingly, giving it the economy of a smaller engine, whilst still producing outstanding levels of power and torque. It's ideal for both short trips through the city and long journeys on the motorway.

The new generation 1.8 i-VTEC engine, with electronically controlled intelligent valve timing, is like having two engines in one, with the performance equivalent of a powerful 2.0 and better fuel efficiency than a 1.6 engine.

Both petrol engines are available with an optional i-SHIFT (Automated-Manual Transmission) which allows you to choose the way you want to drive. Select Manual mode for a more sporty drive using the gear shift, or steering wheel mounted 6-speed paddle shifts for optimum control. Automatic mode provides a more relaxed but equally exhilarating driving experience. i-SHIFT delivers all this with lower emissions and better fuel economy than a conventional automatic transmission.

The i-CTDi lightweight 2.2 litre turbo diesel engine is made from a revolutionary casting process that gives it unparalleled stiffness and strength. It's one of the quietest and most refined diesel engines and is available with a 6-speed manual transmission. Not only that, but it delivers all the performance, economy and driving satisfaction that you'd expect from a Honda engine.





safety

Our radical thinking isn't always visible. In fact, sometimes we'd prefer it if you never saw it at all. Like our safety features. Always integral and always carefully incorporated into the design of our cars. Not always noticeable, but always there when you need them.

The Civic underwent intensive safety testing at our specialist Research and Development facility at Tochigi - the largest and most sophisticated in the world. The result is incredibly strong front and rear crumple zones that are designed to absorb the force of an impact, giving extra protection for both car and passenger. If you're hit from behind, the headrests move forward to absorb the shock and help prevent whiplash.

Multiple airbags, ABS (Anti-lock Braking System), EBD (Electronic Brake-force Distribution) and VSA (Vehicle Stability Assist) all come as standard. The high tech multiplex warning system keeps you fully aware of these safety features throughout your journey.

The outer rear seats are equipped with ISOFix mounting points connected directly to the chassis. This allows you to securely fix an ISOFix child car seat without using the seatbelt. This system is extremely strong, secure and very simple to use.

As an optional extra you can even have a tiny camera positioned on the rear bumper to relay images to the Satellite Navigation screen. This makes parking and reversing simpler and safer.

As far as we're concerned, you can never be too safe. Which is why we use POLAR II, the world's first crash test dummy that mimics the human body exactly in a crash. It allows us to identify potential points of contact and find ways of lessening the impact, making driving safer for both you and pedestrians.

30
options





1.4 i-DSI SE (petrol)

- 16" steel wheels
- 6-speed gearbox
- Multi-function driver computer
- Climate controlled air conditioning
- Stereo CD tuner with RDS (with 4 speakers)
- Perimeter security alarm
- Active head restraints
- Dual front & side Supplemental Restraint System (SRS) airbags
- Dual curtain Supplemental Restraint System (SRS) airbags - front & rear

- Vehicle Stability Assist (VSA)
- Adaptable boot storage
- Refrigerated glove box
- 60:40 split folding rear seats (Magic Seats)

Optional Features

- i-SHIFT (Automated-Manual Transmission) available on petrol models



1.8 i-VTEC SE (petrol) 2.2 i-CTDi SE (diesel)

In addition to 1.4 i-DSI SE specification, the 1.8 i-VTEC SE and 2.2 i-CTDi SE also comes with:

- 16" alloy wheels
- Tweeters
- Drilled aluminium pedals

Optional Features

- i-SHIFT (Automated-Manual Transmission) available on petrol models
- Leather upholstery with heated front seats



Interior shown is 1.4 i-DSI SE



Interior shown is 1.8 i-VTEC SE with i-SHIFT





1.8 i-VTEC Sport (petrol) 2.2 i-CTDi Sport (diesel)

In addition to SE specification, the Sport also comes with:

- 17" alloy wheels
- HID headlights
- Automatic headlight height
- Headlight washers
- Leather wrapped steering wheel
- Front foglights

Optional Features

- i-SHIFT (Automated-Manual Transmission) available on petrol models



1.8 i-VTEC ES (petrol) 2.2 i-CTDi ES (diesel)

In addition to SE specification, the ES also comes with:

- Panoramic glass roof
- Cruise control
- Dual-zone climate control
- Front foglights
- Interior and perimeter alarm (CAT1)
- Auto headlights with dusk sensor
- Rain sensing windscreen wipers
- Power folding door mirrors
- Aluminium foot rest

Optional Features

- i-SHIFT (Automated-Manual Transmission) available on petrol models
- Leather upholstery with heated front seats



Interior shown is 1.8 i-VTEC Sport with i-SHIFT



Interior shown is 1.8 i-VTEC ES with i-SHIFT





1.8 i-VTEC EX (petrol) 2.2 i-CTDi EX (diesel)

In addition to ES specification, the EX also comes with:

- 17" alloy wheels
- Voice recognition DVD Satellite Navigation with Traffic Message Channel (TMC) and Integrated Bluetooth® Hands Free Telephone System (HFT)*
- HID headlights
- Rear parking sensors

Optional Features

- i-SHIFT (Automated Manual Transmission) available on petrol models
- Panoramic glass roof
- Leather upholstery with heated front seats and panoramic glass roof

* Please refer to a list of compatible phones on www.hondahandsfree.com



36

Interior shown is 1.8 i-VTEC EX with i-SHIFT





PETROL

Engines	1.4 i-DSI SE	1.8 i-VTEC SE	1.8 i-VTEC Sport	1.8 i-VTEC ES	1.8 i-VTEC EX
	Manual/i-SHIFT	Manual/i-SHIFT	Manual/i-SHIFT	Manual/i-SHIFT	Manual/i-SHIFT
Type	SOHC	SOHC	SOHC	SOHC	SOHC
Displacement (cc)	1339	1799	1799	1799	1799
Maximum power (PS @ rpm)	83@5700	140@6300	140@6300	140@6300	140@6300
Maximum torque (Nm @ rpm)	119@2800	174@4300	174@4300	174@4300	174@4300
Maximum torque (lb-ft @ rpm)	88@2800	128@4300	128@4300	128@4300	128@4300
Fuel type	Petrol	Petrol	Petrol	Petrol	Petrol
Fuel Economy[†] (Manual/i-SHIFT)					
Urban (l/100km)	7.6/7.5	8.2/8.4	8.4/8.4	8.2/8.4	8.4/8.4
Urban (mpg)	37.2/37.7	34.4/33.6	33.6/33.6	34.4/33.6	33.6/33.6
Extra urban (l/100km)	4.9/5.0	5.4/5.1	5.5/5.2	5.4/5.1	5.5/5.2
Extra urban (mpg)	57.6/56.5	52.3/55.4	51.4/54.3	52.3/55.4	51.4/54.3
Combined (l/100km)	5.9/5.9	6.4/6.3	6.6/6.4	6.4/6.3	6.6/6.4
Combined (mpg)	47.9/47.9	44.1/44.8	42.8/44.1	44.1/44.8	42.8/44.1
CO ₂ (g/km)	139/139	152/150	156/152	152/150	156/152
6-speed manual transmission	●	●	●	●	●
i-SHIFT transmission	○	○	○	○	○
Acceleration 0-62 mph (secs)	14.6/16.1	8.9/10.4	8.9/10.4	8.9/10.4	8.9/10.4
Maximum speed (mph)	106/106	127/127	127/127	127/127	127/127
Weights and Capacities (Manual/i-SHIFT)					
Boot capacity to window seat up (litres, VDA method)	485	485	485	485	485
Boot capacity to window seat down (litres, VDA method)	1352	1352	1352	1352	1352
Fuel tank (litres)	50	50	50	50	50
Kerb weight (kg)	1212/1216	1251/1255	1266/1270	1288/1292	1284/1288
Maximum towing weight with brakes (kg)*	1200	1400	1400	1400	1400
Maximum towing weight without brakes (kg)*	500	500	500	500	500
Maximum trailer nose weight (kg)	75	75	75	75	75
Maximum roof load (kg)	75	75	75	50	75
Wheels and Tyres					
16" steel wheels	● (with trim)	-	-	-	-
16" alloy wheels	○	●	-	●	-
17" alloy wheels	-	○	●	○	●
18" alloy wheels	-	-	○	-	○
Tyres	205/55 R16	205/55 R16	225/45 R17	205/55 R16	225/45 R17
Instant Mobility System (IMS) repair kit	●	●	●	●	●
Space saver spare wheel	○	○	○	○	○

[†]Fuel consumption
This test is designed to give an indication of on-road fuel consumption.

* Maximum towing weights
These are based on the ability of the car, with two occupants of 75kg each, to restart on a 12% gradient at sea level. At altitudes in excess of 1500 metres, engine output may drop with a reduction in towing capability. Extra weight, such as additional passengers or luggage, should also be deducted from the maximum towing weight.

DIESEL

Engines	2.2 i-CTDi SE	2.2 i-CTDi Sport	2.2 i-CTDi ES	2.2 i-CTDi EX
	Manual	Manual	Manual	Manual
Type	DOHC	DOHC	DOHC	DOHC
Displacement (cc)	2204	2204	2204	2204
Maximum power (PS @ rpm)	140@4000	140@4000	140@4000	140@4000
Maximum torque (Nm @ rpm)	340@2000	340@2000	340@2000	340@2000
Maximum torque (lb-ft @ rpm)	251@2000	251@2000	251@2000	251@2000
Fuel type	Diesel	Diesel	Diesel	Diesel
Fuel Economy[†] (Manual/i-SHIFT)				
Urban (l/100km)	6.6	6.7	6.6	6.7
Urban (mpg)	42.8	42.2	42.8	42.2
Extra urban (l/100km)	4.3	4.5	4.3	4.5
Extra urban (mpg)	65.7	62.8	65.7	62.8
Combined (l/100km)	5.1	5.3	5.1	5.3
Combined (mpg)	55.4	53.3	55.4	53.3
CO ₂ (g/km)	135	140	135	140
6-speed manual transmission	●	●	●	●
i-SHIFT transmission	-	-	-	-
Acceleration 0-62 mph (secs)	8.6	8.6	8.6	8.6
Maximum speed (mph)	127	127	127	127
Weights and Capacities (Manual/i-SHIFT)				
Boot capacity to window seat up (litres, VDA method)	485	485	485	485
Boot capacity to window seat down (litres, VDA method)	1352	1352	1352	1352
Fuel tank (litres)	50	50	50	50
Kerb weight (kg)	1389	1404	1413	1409
Maximum towing weight with brakes (kg)*	1500	1500	1500	1500
Maximum towing weight without brakes (kg)*	500	500	500	500
Maximum trailer nose weight (kg)	75	75	75	75
Maximum roof load (kg)	75	75	50	75
Wheels and Tyres				
16" steel wheels	-	-	-	-
16" alloy wheels	●	-	●	-
17" alloy wheels	○	●	○	●
18" alloy wheels	-	○	-	○
Tyres	205/55 R16	225/45 R17	205/55 R16	225/45 R17
Instant Mobility System (IMS) repair kit	●	●	●	●
Space saver spare wheel	○	○	○	○

Key
standard ● optional ○ not available -



PETROL

	1.4 i-DSI SE	1.8 i-VTEC SE	1.8 i-VTEC Sport	1.8 i-VTEC ES	1.8 i-VTEC EX
	Manual/i-SHIFT	Manual/i-SHIFT	Manual/i-SHIFT	Manual/i-SHIFT	Manual/i-SHIFT
Instruments and Controls					
Cruise control	-	-	-	●	●
Audible headlight on reminder	●	●	●	●	●
Internally adjustable headlight height	●	●	-	●	-
Digital clock (built into audio system)	●	●	●	●	●
Paddle shift gear selector (i-SHIFT)	○	○	○	○	○
Fuel filler cap release	●	●	●	●	●
Tachometer (rev counter)	●	●	●	●	●
External temperature gauge (built into odometer)	●	●	●	●	●
Automatic headlight height	-	-	●	-	●
Digital odometer (trip)	●	●	●	●	●
Digital fuel consumption display	●	●	●	●	●
Multiplex meter	●	●	●	●	●
Security					
Perimeter security alarm	●	●	●	-	-
Interior and perimeter alarm (CAT1)	-	-	-	●	●
Remote keyless entry	●	●	●	●	●
Central locking	●	●	●	●	●
Rolling code ECU engine immobiliser	●	●	●	●	●
Honda Superlocks (deadlocks)	●	●	●	●	●
Externally visible Vehicle Identification Number (VIN)	●	●	●	●	●
High security integrated audio	●	●	●	●	●
Rear parcel shelf	●	●	●	●	●
Glove box	●	●	●	●	●
Safety					
Active head restraints	●	●	●	●	●
Dual front Supplemental Restraint System (SRS) airbags	●	●	●	●	●
Dual side Supplemental Restraint System (SRS) airbags	●	●	●	●	●
Dual curtain Supplemental Restraint System (SRS) airbags - front and rear	●	●	●	●	●
Vehicle Stability Assist (VSA)	●	●	●	●	●
Anti-lock Braking System (ABS)	●	●	●	●	●
Electronic Brake-force Distribution (EBD)	●	●	●	●	●
Emergency Brake Assist	●	●	●	●	●
High level rear brake light	●	●	●	●	●
Side impact protection beams	●	●	●	●	●
Front seat belt pre-tensioners	●	●	●	●	●
5 x 3 point seat belts	●	●	●	●	●
ISOFix childseat restraint mechanism	●	●	●	●	●
Headlight washers	-	-	●	-	●
Front disc brakes	●	●	●	●	●
Rear disc brakes	●	●	●	●	●
Drive By Wire (DBW)	●	●	●	●	●
Three rear head restraints	●	●	●	●	●
Rear parking sensors	○	○	○	○	●

DIESEL

	2.2 i-CTDi SE	2.2 i-CTDi Sport	2.2 i-CTDi ES	2.2 i-CTDi EX
	Manual	Manual	Manual	Manual
Instruments and Controls				
Cruise control	-	-	●	●
Audible headlight on reminder	●	●	●	●
Internally adjustable headlight height	●	-	●	-
Digital clock (built into audio system)	●	●	●	●
Paddle shift gear selector (i-SHIFT)	-	-	-	-
Fuel filler cap release	●	●	●	●
Tachometer (rev counter)	●	●	●	●
External temperature gauge (built into odometer)	●	●	●	●
Automatic headlight height	-	●	-	●
Digital odometer (trip)	●	●	●	●
Digital fuel consumption display	●	●	●	●
Multiplex meter	●	●	●	●
Security				
Perimeter security alarm	●	●	-	-
Interior and perimeter alarm (CAT1)	-	-	●	●
Remote keyless entry	●	●	●	●
Central locking	●	●	●	●
Rolling code ECU engine immobiliser	●	●	●	●
Honda Superlocks (deadlocks)	●	●	●	●
Externally visible Vehicle Identification Number (VIN)	●	●	●	●
High security integrated audio	●	●	●	●
Rear parcel shelf	●	●	●	●
Glove box	●	●	●	●
Safety				
Active head restraints	●	●	●	●
Dual front Supplemental Restraint System (SRS) airbags	●	●	●	●
Dual side Supplemental Restraint System (SRS) airbags	●	●	●	●
Dual curtain Supplemental Restraint System (SRS) airbags - front and rear	●	●	●	●
Vehicle Stability Assist (VSA)	●	●	●	●
Anti-lock Braking System (ABS)	●	●	●	●
Electronic Brake-force Distribution (EBD)	●	●	●	●
Emergency Brake Assist	●	●	●	●
High level rear brake light	●	●	●	●
Side impact protection beams	●	●	●	●
Front seat belt pre-tensioners	●	●	●	●
5 x 3 point seat belts	●	●	●	●
ISOFix childseat restraint mechanism	●	●	●	●
Headlight washers	-	●	-	●
Front disc brakes	●	●	●	●
Rear disc brakes	●	●	●	●
Drive By Wire (DBW)	●	●	●	●
Three rear head restraints	●	●	●	●
Rear parking sensors	○	○	○	●

Key
standard ● optional ○ not available -



PETROL

Exterior	1.4 i-DSI SE	1.8 i-VTEC SE	1.8 i-VTEC Sport	1.8 i-VTEC ES	1.8 i-VTEC EX
	Manual/i-SHIFT	Manual/i-SHIFT	Manual/i-SHIFT	Manual/i-SHIFT	Manual/i-SHIFT
Panoramic glass roof	-	-	-	●	-
Panoramic glass roof and leather upholstery (including heated front seats and front centre console armrest with leather)	-	-	-	-	○
Body coloured bumpers	●	●	●	●	●
Body coloured door mirrors	●	●	●	●	●
Chrome front door handles	●	●	●	●	●
HID headlights	-	-	●	-	●
Automatic headlights with dusk sensor	-	-	-	●	●
Front foglights	○	○	●	●	●
Headlight washers	-	-	●	-	●
Electric adjustable and heated door mirrors	●	●	●	●	●
Integrated aerial in rear windscreen	●	●	●	●	●
Rear wiper ▲	-	-	-	-	-
Rear hatch spoiler	●	●	●	●	●
Twin chrome exhaust	-	●	●	●	●
Mirror integrated indicators	●	●	●	●	●
Power folding door mirrors	-	-	-	●	●
Length (mm)	4245	4245	4245	4245	4245
Width including door mirrors (mm)	2046	2046	2046	2046	2046
Width excluding door mirrors (mm)	1765	1765	1765	1765	1765
Height excluding aerial (mm)	1460	1460	1460	1460	1460
Comfort and Convenience					
Climate control air conditioning	●	●	●	-	-
Dual zone climate control (left:right independent)	-	-	-	●	●
Adaptable boot storage with lid	●	●	●	●	●
Leather wrapped steering wheel	-	○	●	●	●
Refrigerated glove box	●	●	●	●	●
Illuminated glove box	●	●	●	●	●
Tilt and telescopic steering wheel adjustment	●	●	●	●	●
Drilled aluminium sports pedals	-	●	●	●	●
Aluminium foot rest	-	-	-	●	●
Rain sensing front windscreen wipers	-	-	-	●	●
Electric power assisted steering	●	●	●	●	●
Cabin filter	●	●	●	●	●
Driver and passenger vanity mirror with lid	●	●	●	●	●
Driver and passenger illuminated vanity mirror in sunshade with lid	●	●	●	●	●
Front cupholders	●	●	●	●	●
Front bottle holders in door	●	●	●	●	●
Front electric windows	●	●	●	●	●
Rear electric windows	●	●	●	●	●
Rear 12V power outlet	●	●	●	●	●
Front map light	●	●	●	●	●
Rear interior light	●	●	●	●	●
Boot light	●	●	●	●	●

▲ Rear wiper

The rear windscreen's curved design makes water run off naturally. The lower section, below the spoiler, has a water repellent hydrophilic coating. So there's no need for a wiper.

DIESEL

Exterior	2.2 i-CTDi SE	2.2 i-CTDi Sport	2.2 i-CTDi ES	2.2 i-CTDi EX
	Manual	Manual	Manual	Manual
Panoramic glass roof	-	-	●	-
Panoramic glass roof and leather upholstery (including heated front seats and front centre console armrest with leather)	-	-	-	○
Body coloured bumpers	●	●	●	●
Body coloured door mirrors	●	●	●	●
Chrome front door handles	●	●	●	●
HID headlights	-	●	-	●
Automatic headlights with dusk sensor	-	-	●	●
Front foglights	○	●	●	●
Headlight washers	-	●	-	●
Electric adjustable and heated door mirrors	●	●	●	●
Integrated aerial in rear windscreen	●	●	●	●
Rear wiper ▲	-	-	-	-
Rear hatch spoiler	●	●	●	●
Twin chrome exhaust	●	●	●	●
Mirror integrated indicators	●	●	●	●
Power folding door mirrors	-	-	●	●
Length (mm)	4245	4245	4245	4245
Width including door mirrors (mm)	2046	2046	2046	2046
Width excluding door mirrors (mm)	1765	1765	1765	1765
Height excluding aerial (mm)	1460	1460	1460	1460
Comfort and Convenience				
Climate control air conditioning	●	●	-	-
Dual zone climate control (left:right independent)	-	-	●	●
Adaptable boot storage with lid	●	●	●	●
Leather wrapped steering wheel	○	●	●	●
Refrigerated glove box	●	●	●	●
Illuminated glove box	●	●	●	●
Tilt and telescopic steering wheel adjustment	●	●	●	●
Drilled aluminium sports pedals	●	●	●	●
Aluminium foot rest	-	-	●	●
Rain sensing front windscreen wipers	-	-	●	●
Electric power assisted steering	●	●	●	●
Cabin filter	●	●	●	●
Driver and passenger vanity mirror with lid	●	●	●	●
Driver and passenger illuminated vanity mirror in sunshade with lid	●	●	●	●
Front cupholders	●	●	●	●
Front bottle holders in door	●	●	●	●
Front electric windows	●	●	●	●
Rear electric windows	●	●	●	●
Rear 12V power outlet	●	●	●	●
Front map light	●	●	●	●
Rear interior light	●	●	●	●
Boot light	●	●	●	●

Key

standard ● optional ○ not available -



PETROL

Seating

	1.4 i-DSI SE Manual/i-SHIFT	1.8 i-VTEC SE Manual/i-SHIFT	1.8 i-VTEC Sport Manual/i-SHIFT	1.8 i-VTEC ES Manual/i-SHIFT	1.8 i-VTEC EX Manual/i-SHIFT
Front centre console armrest	●	●	●	●	●
Driver's seat height adjustment	●	●	●	●	●
Rear seat centre armrest	●	●	●	●	●
60:40 split folding rear seats	●	●	●	●	●
Rear centre headrest and 3-point seatbelt	●	●	●	●	●
Leather upholstery, heated front seats, front centre console armrest with leather and leather wrapped steering wheel	-	○	-	-	-
Leather upholstery, heated front seats and front centre console armrest with leather	-	-	-	○	-
Leather upholstery and panoramic glass roof (including heated front seats and front centre console armrest with leather)	-	-	-	-	○

In Car Entertainment (ICE) **

Stereo CD tuner with RDS	●	●	●	●	●
Four speakers	●	●	●	●	●
Tweeters	-	●	●	●	●
Steering wheel mounted audio controls	●	●	●	●	●
Speed adjusting audio volume	●	●	●	●	●
Voice recognition DVD Satellite Navigation with Traffic Message Channel (TMC) and integrated Bluetooth® Hands Free Telephone System (HFT) ***	-	-	-	-	●

Option Packs **

City pack includes: painted front and rear bumper protectors, painted door protectors, painted parking sensors and Elegance floor carpets	○	○	○	○	○
Image pack includes: painted front, rear and side skirts and painted tailgate spoiler	○	○	○	○	○
Prestige pack includes: front and rear bumper garnish plus front fog light kit	○	○	-	-	-
Concert pack includes: Co-axial speaker upgrade and bass system	○	○	○	○	○

DIESEL

Seating

	2.2 i-CTDi SE Manual	2.2 i-CTDi Sport Manual	2.2 i-CTDi ES Manual	2.2 i-CTDi EX Manual
Front centre console armrest	●	●	●	●
Driver's seat height adjustment	●	●	●	●
Rear seat centre armrest	●	●	●	●
60:40 split folding rear seats	●	●	●	●
Rear centre headrest and 3-point seatbelt	●	●	●	●
Leather upholstery, heated front seats, front centre console armrest with leather and leather wrapped steering wheel	○	-	-	-
Leather upholstery, heated front seats and front centre console armrest with leather	-	-	○	-
Leather upholstery and panoramic glass roof (including heated front seats and front centre console armrest with leather)	-	-	-	○

In Car Entertainment (ICE) **

Stereo CD tuner with RDS	●	●	●	●
Four speakers	●	●	●	●
Tweeters	●	●	●	●
Steering wheel mounted audio controls	●	●	●	●
Speed adjusting audio volume	●	●	●	●
Voice recognition DVD Satellite Navigation with Traffic Message Channel (TMC) and integrated Bluetooth® Hands Free Telephone System (HFT) ***	-	-	-	●

Option Packs **

City pack includes: painted front and rear bumper protectors, painted door protectors, painted parking sensors and Elegance floor carpets	○	○	○	○
Image pack includes: painted front, rear and side skirts and painted tailgate spoiler	○	○	○	○
Prestige pack includes: front and rear bumper garnish plus front fog light kit	○	-	-	-
Concert pack includes: Co-axial speaker upgrade and bass system	○	○	○	○

** For a full listing of accessories please contact your local Honda Dealer
 *** For a list of compatible phones please refer to www.hondahandsfree.com

Key
 standard ● optional ○ not available -

S Grade is also available. Please contact your Dealer or Honda Contact Centre (telephone number 0845 200 8000) for details.
 These specification details do not apply to any particular product which is supplied or offered for sale. The manufacturers reserve the right to vary their specifications, including colours, with or without notice and at such times in such manner as they think fit. Major as well as minor changes may be involved. Every effort, however, is made to ensure the accuracy of the particulars contained in this brochure. This publication shall not constitute in any circumstances whatsoever an offer by the Company to any person. All sales are made by the Distributor or Dealer concerned subject to and with the benefit of the standard Conditions of Sale and Warranty given by the Distributor or Dealer, copies of which may be obtained from him on request. This publicity material applies to the UK only Trade Descriptions Act (1968). Whilst efforts are made to ensure specification accuracy, brochures are prepared and printed several months in advance of distribution and consequently cannot always immediately reflect either changes in specification or in some isolated cases the provision of a particular feature. Customers are always advised to discuss specification details with the supplying Dealer especially if your model selection is dependent upon one of the features advertised.



accessories



Model shown is 1.8 i-VTEC Sport with 18" alloy wheels - Storm design, and Image Pack - includes front, rear and side skirts, plus tailgate spoiler.



1



2



3



4



5



6



7



8



9

accessories

- 1.** Body coloured tailgate spoiler
- 2.** Rear parking camera
- 3.** Roof rack
- 4.** Rear parking sensors
- 5.** Fixed tow bar
- 6.** Front bumper protective trim
- 7.** Cycle rack
- 8.** 18" alloy wheel, Storm design
- 9.** 17" alloy wheel, Sedici design



1



2



3



4



5



6



7



8



8

accessories

- 1. Bluetooth® hands free telephone kit
- 2. Tie down net
- 3. Gearshift knob
- 4. Adaptor for iPod®
- 5. Doorstep garnish
- 6. Blue ambient footwell lighting
- 7. Honda Compact Navigation System
- 8. Rear parking camera kit (only for cars with factory fitted Satellite Navigation System.)

iPod is a registered trademark of Apple Computer, Inc. registered in the US and other countries



we like green things

We love this planet and we're well aware that a global corporation that builds cars has to take its responsibilities very seriously. That's why we only ever build cars with the future in mind. There's no denying the damage that's been done since the invention of the internal combustion engine, but thanks to cutting-edge technology we're aiming to cut it out altogether.

Our manufacturing plant in Swindon is reducing the amount of landfill waste it produces. At the going rate, we're on track to cut that figure to zero by 2010. The development of the 3R concept - reduce, reuse, recycle - allows us not only to apply our principles throughout the plant, but also provides an educational tool for local schools and councils who visit us on a regular basis.

We've made technological developments that radically reduce emissions too. **1** That's why the Honda Insight became the most fuel efficient sports coupé in existence thanks to its Integrated Motor Assist (IMA) technology. **2** This same technology won Best Fuel Economy in 2003 and Best 1-1.4 litre Engine at the 2004 International Engine of the Year Awards. It also won the BP Green Fleet award for vehicle innovation and Car Manufacturer of the year 2005. The latest generation IMA technology is found in the new Civic Hybrid.

Our new generation i-series engines, such as our i-VTEC engine, now produce 83% less HC (hydrocarbons) and NOx (oxides of nitrogen) emissions compared to ten years ago. And the production of road-going two stroke engines is now a thing of the past. Even when it comes to boats, if you're after an outboard engine, with Honda you'll only ever get the cleaner four-stroke version because of our commitment to the environment.

At Honda, if we have an idea, we want to make it happen. **3** Take the ground breaking FCX fuel-cell electric vehicle. The only emission from the vehicle is pure H₂O. The first car of its kind to obtain approval for commercialisation in the US, it's fuelled by the chemical reaction between hydrogen and oxygen. **4** We've even built a solar-powered hydrogen fuelling station at our research institute in Los Angeles. Developed to reduce global dependency on oil in the future, it's the greenest vehicle on the planet, and it's already driving around the streets of Tokyo and LA.

At Honda we want to fill the world with great ideas. Not pollution.

When your Honda eventually comes to the end of its life, Honda is committed to disposing of it in the most environmentally friendly manner. For more information about Honda's approach to end of life vehicles, please go to: www.honda.co.uk/recyclehonda



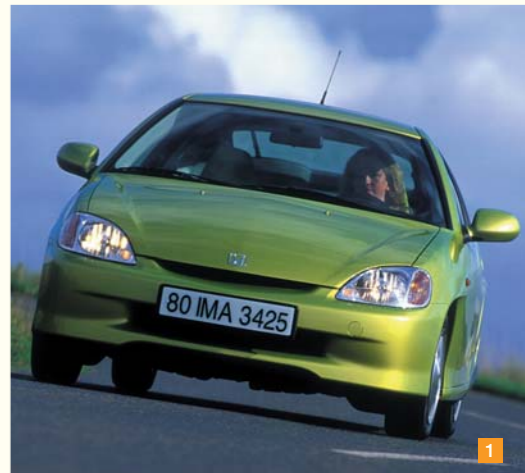
3



2



4



1



why do we find it so hard to talk about money?

You've studied it. Talked about it. Dreamed about it. Now you have to pay for it. Just doesn't feel like part of the fun, somehow. So we thought there should be a better way to do this. Not a quick-fix, easy-terms, one-size-fits-all deal, either. Finance that sounds too good to be true usually is. We were thinking 'simple', 'flexible' and 'convenient'. And that's what you get, right from making the deposit.

So where do we start?

With the deposit. Your current car or cash are both fine. You don't have either?

No problem: we can work out a zero-deposit package, too.

Done your sums?

The most important part of any finance is the monthly payments. Only you know how much you can really afford. So tell us. That way, we can work out monthly payments to fit in with your budget. Our finance packages are flexible enough to work round just about anything. After that, it's up to you.

We give you choices right through the process. Including at the end of the agreement. You want to keep the car? Simple: make the final payment and it's all yours.

Or, you can give it back. As long as it's in good condition and within the agreed mileage, you can walk away with nothing more to pay*.

And if you're ready for a new Honda, we'll arrange a part exchange and a new finance package. Easy, really.

Making our finance more straight-forward meant leaving out a few things.

The long, complex forms.

The dense technical jargon.

The wait to see if you've got the go-ahead.

We didn't think you'd miss them.

We don't. All of which means you get your new Honda quicker.

At Honda we call this Finance Friendly.

Of course, none of this is any substitute for talking it over with your local Honda Dealer.

So now you know what to expect from a visit to us. When can we expect a visit from you?



Terms and Conditions

*Honda Aspirations only (Honda's PCP product).

Credit provided by Honda Finance Europe Plc., 470 London Road, Slough, Berkshire, SL3 8QY.



don't you just hate saying goodbye?

At Honda, we have dedicated teams of people making sure your car is everything you want it to be. Do you and your car then head off into the distance, never to see or hear from us ever again? Absolutely not. That's why we have a specialist team of people who are there for you all the way. So, if we haven't given you enough reasons to buy a new Honda, here are 8 more.

1 Know where you are with servicing costs.

Honda Happiness Fixed Price Servicing*

A pre-paid servicing package, so you know your Honda servicing costs for the next 5 years (or 62,500 miles). Ensure your car is maintained by Honda trained technicians using Honda Genuine parts, protecting the resale value of your new Honda.†

3 Budget for servicing and repairs.

Honda Happiness Budget Plan Servicing

You can budget for all your scheduled servicing and, if required, selected maintenance items (i.e. brake pads and tyres) for a duration and mileage of your choice and pay by monthly direct debit.

6 Complimentary 7-day insurance.

Honda Happiness Complimentary 7-Day Driveaway Insurance**

This cover offers market-leading levels of protection and comes with the added comfort of a 3 year authorised repairer guarantee on Honda Genuine parts, should you need to claim following an accident.

2 Enjoy fixed prices for repairs.

Honda Happiness Fixed Price Repairs

This national programme offers fixed price repairs on selected items at participating Dealerships, covering the cost, fitting and VAT on a range of essential parts that you may need to replace. The result is no more guesstimates, no hidden charges and no extra bills.

4 Extend your warranty to 6 years.

Honda Happiness Guarantee

All Honda cars are covered by a 3 year manufacturer's warranty*, but with the Honda Happiness Guarantee* you can extend this cover for up to an extra 3 years.

7 Insurance cover at competitive rates.

Honda Happiness Annual Insurance**

This insurance scheme has been designed so that Honda owners receive beneficial motor insurance cover at competitive rates.

5 Free roadside assistance for 3 years.

Honda Happiness European Assistance

With this you benefit from assistance at home, by the roadside and recovery in the UK and Europe.

8 Be covered by several different warranties.

Warranty

- 3 year / 90,000 mile Standard Warranty*
- 3 year Surface Corrosion Warranty*
- 5 year Exhaust System Warranty*
- 10 year Chassis Corrosion Warranty*
- 12 year Structural Corrosion Warranty*



For full details on any of these Honda services, and whether you would qualify, please visit your nearest authorised Honda Dealership.

* Terms and conditions apply. ** For your protection, telephone calls will be recorded and may be monitored.

† Any additional maintenance work or adjustments carried out during this time, unless covered by Honda's standard 3 year / 90,000 mile warranty, would not be covered.



this is ASIMO

(short for Advanced Step in Innovative Mobility).

Not only is he charming, but he also leads the world in Artificial Intelligence. With his ground breaking abilities in balance, manoeuvrability, face and voice recognition, he represents our vision of creating technologies that go way beyond our everyday perceptions of transport and mobility. Some of our cars have already benefited from these technological advances.

For an example of some of the technology featured on the Civic 5 door, please see the following paragraphs.

ABS

The Anti-lock Braking System prevents the wheels from locking when the brakes are applied in an emergency, reducing the possibility of a skid on wet, icy or loose surfaces and enabling the driver to retain steering control.

Aerodynamics

Aerodynamics refers to the ability of a car to overcome the resistance or 'drag' generated by its body as it moves through the atmosphere. The lower the Coefficient of Drag (Cd) the more aerodynamic the shape. An aerodynamic shape is more fuel efficient, quieter and keeps the car firmly on the road. The Cd value multiplied by the cross section area of the car is the wind drag of the car.

Brake Assist

If you have to make an emergency stop, the system detects the quick pedal action and automatically boosts braking power to reduce the stopping distance.

CO₂

Carbon dioxide is an exhaust gas believed to be one of the causes of the green house effect. The lower the CO₂ emissions, the better for the environment.

Common rail

Common rail diesel engines have a reservoir of highly pressurised fuel close to the cylinder heads. As well as allowing extremely precise amounts of fuel to be injected into the combustion chamber very quickly, the pressure means the fuel forms a finer mist, so burns more efficiently. This makes the engine more economical and reduces noise, smoke and emission levels.

DBW

(Drive-by-wire or Electronic Throttle Control System) The mechanical link from the accelerator pedal to the engine is replaced with sensors that detect the throttle position and feed instructions directly to the engine management system. This provides instant, directly proportional yet smooth responses to throttle inputs.

EBD

Electronic Brake-force Distribution works in tandem with ABS analysing weight distribution around the car and automatically adjusting the braking force applied to front and rear wheels to help maintain directional stability.

Ergonomics

Ergonomics is the applied science of designing a working environment, in this case the car's cabin, in order to maximise the occupants comfort and safety. In simple terms, that means locating major controls and instruments in a way that makes them easy and comfortable to use and to see. This is extended to seating which minimises driver fatigue and discomfort.

Fuel consumption

The figures for the fuel consumption and CO₂ emissions are to give you an indication of the cars performance. Following legislation by the VCA (Vehicle Certification Agency), all car manufacturers generate these statistics through the same industry standard test. This allows accurate comparison across all manufacturers and models. The tests use a base grade version of the model and do not take into account optional levels of equipment, such as different sized wheels, tyres and other factors that

can affect the economy of the model. The test is on a rolling road and there is no additional weight in the car other than the driver (no passengers or cargo) and it does not account for individual driving style, which can mean a difference to the figures achievable in the real world.

i-CTDi

The Honda i-CTDi engine - the 'i' stands for 'intelligent' - is a new-generation direct injection engine that uses both the latest common rail and variable turbocharger technology. As a result, it's significantly quieter, smoother, more powerful and returns greater fuel economy than conventional diesels.

i-VTEC

(Variable Valve Timing and Lift Electronic Control) Varies the amount of valve lift and the duration of valve opening during the intake stroke of each engine cylinder. The effect is optimised combustion over changing engine speeds with the result of reduced fuel consumption and emissions as well as increased engine performance.

Variable turbocharger

Turbochargers use rotors to pressurise the air going into the cylinders. This increases the air's oxygen density, improving combustion and producing more power. The turbocharger fitted to the i-CTDi engine has variable nozzles, which boost the airflow according to how hard you press the accelerator - the more you put your foot down, the more the airflow is increased. This produces instant, smooth acceleration, virtually eliminating the problem of 'turbo lag'.



what's next?

Everything we do at Honda follows a simple approach: we do it with the future in mind. Substantial damage has been done to the environment since the combustion engine was invented. But we use cutting-edge technology and advanced thinking to reduce the harmful effects of our engines on the environment.

We dreamt of building engines with no emissions at all and now with the FCX, we've proved that impossible dreams can be made a reality.

Our fuel cell car uses hydrogen, and the only emission is water – water so clean that the Mayor of San Francisco drank it after he tested one of our fuel cell cars.

Creating the fuel cell was just the beginning though. Our belief in turning dreams into reality means the next step is to make the FCX available to everyone, so you could own a vehicle that doesn't affect the environment at all. That's what we call the Power of Dreams.



milanored

champagnesilver

nighthawkblack

alabastersilver

royalblue

blueishsilver

galaxygrey

tangerineorange

The colour of your car can say a lot about you. Recent studies have shown that blue cars are chosen by perfectionists and those more deliberate in their actions. Drivers of silver cars are often quietly confident, cool, calm and collected. A grey car often reflects a calm nature and someone dedicated to their work. Red cars are driven by those who are passionate and full of zest, energy and drive. An orange car often has a vibrant, courageous and assured driver while black has often been the choice of the rebel.

So think hard before you decide - does your colour match your personality?

