



Your personal Mazda BT-50 configurator

Now that you have read about the new Mazda BT-50, here's your opportunity to create the model that's just right for you.

Overleaf, you will find a series of checkboxes. Simply tick the bodystyle and features of your choice, and keep it as a quick reminder of your preferred model.

Alternatively, show it to your Mazda dealer who will be happy to arrange a test drive so you can experience the exciting new Mazda BT-50 for yourself.



Warranty Plus – 3-Year Cover

Every Mazda is designed and built to the highest standards of performance, comfort and reliability. For your further reassurance, Mazda also provides a full 3-year / 60,000-mile¹ warranty cover, including Mazda European Assistance, 3-year paintwork warranty and a 12-year anti-perforation warranty. ¹There is no mileage limit during the first year of the warranty.

Mazda Momentum – New Vehicle Extended Warranty

At any time during the manufacturer's warranty period, you may purchase a Mazda Momentum extended warranty package. Three options are available. Your Mazda dealer will be pleased to provide you with details.

Mazda Credit*

Mazda offers a variety of finance, leasing and payment protection schemes to suit the needs of both private and business customers. With our wide choice of plans and services, no-one is more committed to delivering complete motoring confidence and total peace of mind than Mazda and Mazda Credit.

Mazda MultiOption – Economical payments protected by any fall in car values, with three options to choose from at the end of the agreement.

Mazda MultiOption Cashplan – All the benefits of MultiOption but with no regular payments.

Mazda Hire Purchase – A simple, straightforward and traditional funding plan.

Mazda Business Partner

As a Mazda corporate customer, you'll find that Mazda vehicles are designed to fulfil the diverse needs of a modern company. Our corporate service offers attractive purchase prices, low running costs and market-driven residual values, resulting in extremely competitive ownership costs.

Mazda Digital Service Record

The Mazda Digital Service Record (DSR) system provides increased security against counterfeit service documents and odometer tampering, and makes it easy to keep the service history up to date. Stored on a central database, the DSR replaces the traditional paper service book and ensures a secure, accurate and permanent service history for the life of the vehicle.

Your Mazda dealer:

Mazda Motors UK Limited reserves the right to introduce changes in specification and equipment due to its ongoing product development. Colour and trim samples shown in this brochure may vary from the actual colours because of limitations in the printing process. It is recommended that you consult your Mazda dealer when referring to these.

*Finance subject to status. Guarantees / Indemnities may be required. Written quotations: Mazda Credit UK, Central Office, Eagle Way, Brentwood, Essex CM13 3AR.

Authorised and regulated by the Financial Services Authority.

October 2007.

Internet: www.mazda.co.uk
Mazda Helpline: 08457 48 48 48



Mazda BT-50



Part No. MCAG862 10/07 (BIN 304516/UKV1)

ZOOM-ZOOM

Built to perform

Britain's favourite sports car brand now introduces the powerful new Mazda BT-50: built to perform, whatever the conditions. Combining the soul of a sports car with the versatile attributes of a robust, go-anywhere 4x4, it's more rewarding to drive than any pick-up has the right to be. Stunning to look at, with a smart and spacious interior, plus an abundance of advanced technologies, it's the most car-like pick-up yet.

The new Mazda BT-50. No other pick-up gets close.



Colour swatches:

- Cool White
- Nifty Red
- Black Mica
- Gloaming Silver Metallic
- Highlight Silver Metallic
- Strato Blue Mica
- Titanium Grey Metallic

Configuration Panel:

- Bodystyle:**
 - Single Cab
 - Double Cab
- Engine / Transmission:**
 - 2.5 MZR-CD diesel
 - 5-speed manual
- Drivetrain:**
 - 4x2 (Single Cab only)
 - 4x4
- Series Derivative:**
 - 4x2 Single Cab
 - 4x4 Double Cab TS
 - 4x4 Single Cab
 - 4x4 Double Cab TS²
- Options** (e.g. metallic paint, air conditioning)
Please see pages 30-33 for full options listings.
- Colour:** e.g. Highlight Silver Metallic
- Trim:** e.g. Grey cloth
- Service Options** (e.g. customised finance and insurance packages, 'Service Plus' inspection package, extended warranty). Please refer to back cover.

Images shown are for colour reference only.

- 2 **Built to perform**
Introduction.
- 4 **Nothing stands in its way**
Design and craftsmanship.
- 6 **Rise to the challenge**
Power and functionality.
- 8 **Driving force**
Economical performance.
- 10 **Confident adventure**
Strength and safety.
- 12 **Ready for anything**
On-road / off-road capability.
- 14 **Fully loaded**
Versatility.
- 16 **The great indoors**
Interior features and comfort.
- 18 **The range overview**
Single Cab and Double Cab.
- 20 **Options and accessories**
Wheels, exterior and interior options, functional options.
- 26 **Specifications**
Technical data, standard equipment, options, colour and trim, configurator.



Top image shows Mazda BT-50 4x4 Double Cab TS² with accessory rear bumper, rear style bar, load liner, tow bar and tubular running-boards available at extra cost. Bottom image shows Mazda BT-50 4x4 Double Cab TS² with accessory rear style bar and load liner available at extra cost.

Nothing stands in its way

The briefest of encounters will convince you that the sensational new Mazda BT-50 is far more than just a pick-up. The cool new design, with a choice of spacious cab styles and head-turning accessories, announces its uncompromising performance loud and clear. With fearless ability, both on and off-road, the Mazda BT-50 provides solid proof that hard work and good looks can go comfortably hand in hand. Rugged and powerful, nothing will stand in its way.







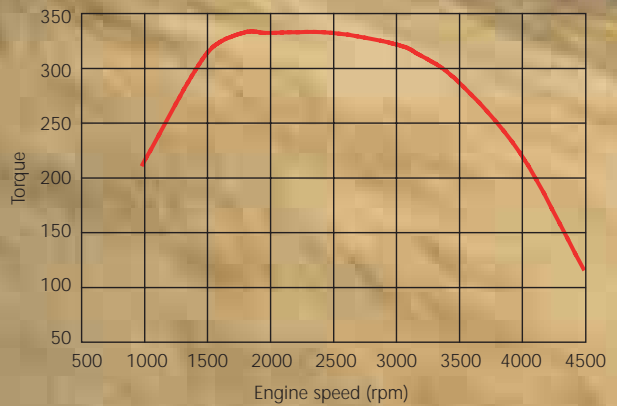
Dependable power

Developing 330Nm of torque at just 1,800rpm, the powerful 2.5 MZR-CD diesel engine has a huge capacity for hard work.

www.mazda.co.uk



2.5-litre MZR-CD diesel engine torque curve



Rise to the challenge

With a mighty 3000kg* towing potential and mind-blowing 330Nm of adventure-seeking torque, you can rely on the hard-as-nails Mazda BT-50 to confidently soak up whatever challenge you present. And with a generous cargo bed length of up to 2280mm**, it provides enough space to bring along just about everything you need to get the job done. Built to take on the most challenging tasks, it delivers all the cargo-carrying strength you need, without the weak excuses.

*4x4 models. Braked trailer.

**Single Cab models.



Driving force

On the move, the new 2.5-litre MZR-CD turbocharged diesel engine and slick 5-speed transmission will take you places you've never been before. Indeed, with a 0-62mph time of just 10.4 seconds*, you'll get there far quicker than you ever imagined possible. Yet for all its power, the Mazda BT-50 is remarkably economical, returning 39.7mpg* on the Extra Urban cycle, whilst meeting the latest EC Stage IV emissions regulations. For company car drivers, its classification as a commercial vehicle brings further benefits as it attracts lower Benefit-in-Kind taxation** than similarly priced passenger cars. VAT registered users can even recover this element of the purchase price, making it all the more rewarding to drive, both on and off the road.

*4x2 Single Cab model. Please refer to page 27 for full details.

**Mazda does not purport to provide taxation guidance. Drivers should always take professional advice to establish their personal tax position.




2.5 MZR-CD engine

Powerful yet refined 143ps (105kW) common-rail direct-injection turbo diesel engine is your ticket to outdoor adventure.

4-wheel drive system

High and low-ratio transfer box delivers tough, go-anywhere 4-wheel drive capability. The Remote Free Wheel hub system (RFW) automatically engages on 4WD selection and allows on-the-move shifts between 2WD and 4WD for maximum traction and control without any downtime.



Confident adventure

We engineered the new Mazda BT-50 to be as tough as the toughest terrain. Beneath its confident lines, a rugged cross-braced ladder-frame chassis forms the backbone of its end-to-end strength. Independent double-wishbone front suspension and power-assisted steering combine with robust rear suspension for quick, accurate responses to your commands.

The strongly constructed cabin forms an effective safety cell, whilst an array of innovative safety systems, including up to four airbags and a 4-Wheel Anti-lock Braking System (4W-ABS) with Electronic Brake-force Distribution (EBD)*, confirm that what was a smart decision is also a safe one.

*4x4 Double Cab models only.



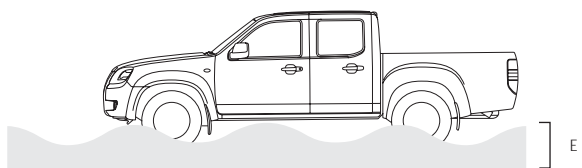
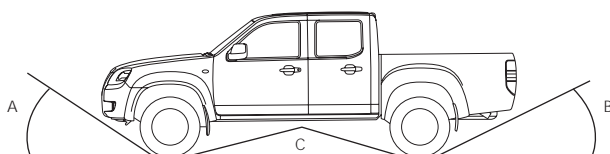
Ready for anything

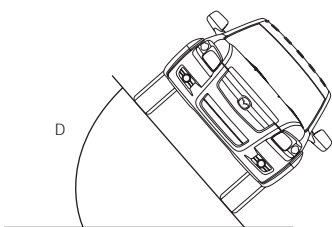
The new Mazda BT-50's tough appearance is backed up by its fearless capability. Choose between rear-wheel drive, the classic choice for lighter loads or, when hard work or adventure beckon, the intrepid versatility of the robust 4x4 models. Bold, extra-wide wheel arches allow longer suspension travel, while short overhangs and up to 207mm* of ground clearance help it clear deep ruts and steep rises. For demanding off-road conditions, a low ratio transfer box provides maximum traction on sand, snow and mud, or when using the huge torque available to haul loads up steep gradients

*Ground clearance between the axles on 4x4 models (unladen).



Technical Data





Manoeuvrability

	4x2 Single Cab	4x4 Single Cab	4x4 Double Cab
A Angle of approach (unladen)	24°	34°	34°
B Angle of departure (unladen): to exhaust pipe	23°	33°	33°
C Ramp breakover angle (unladen)	–	16°	22°
D Tilt angle (unladen)	–	51°	48°
E Wading depth (mm)	400	750	750

Fully loaded

Innovative features and masses of storage space help to make the new Mazda BT-50 your most reliable partner. A large, easily accessible cargo box means a rugged load capacity of up to 1212kg, while rope hooks as standard ensure that whatever you are carrying stays right where it's meant to be. The tough double-skinned steel construction provides far more added strength and durability than should be expected of such a vehicle. You'll even find guiding grooves on the inside of the cargo box that allow you to slide in dividers, either horizontally or vertically, to form separate compartments to keep your tools, sports equipment or materials safely apart. Invaluable during the week, priceless at weekends.



Slide-out tray

With a 10kg capacity, it adds a further endorsement to the cab's insatiable versatility.



The great indoors

The head-turning Mazda BT-50 can easily handle the tough stuff off-road. Inside however, it promotes the good life with generous space for up to five* adults to relax, plus masses of accessible stowage room. Controls are positioned for ease of use, while air conditioning ensures you'll always arrive refreshed. Want to cruise to your favourite tunes?

The Mazda BT-50's quiet cabin lets you experience superb sound quality from the MP3-compatible modular audio system.

*Double Cab models.





Enhanced seat comfort

Affording outstanding comfort and support, the newly-designed seats would not be out of place in an executive saloon.



Audio system

High-performance modular audio system options include a 6-disc in-dash CD/MP3/ radio with up to six speakers for an exhilarating sound experience.



Air conditioning

Keep your cool, no matter how tough your day.



Mazda BT-50. The range overview

4x2 Single Cab



4x4 Single Cab

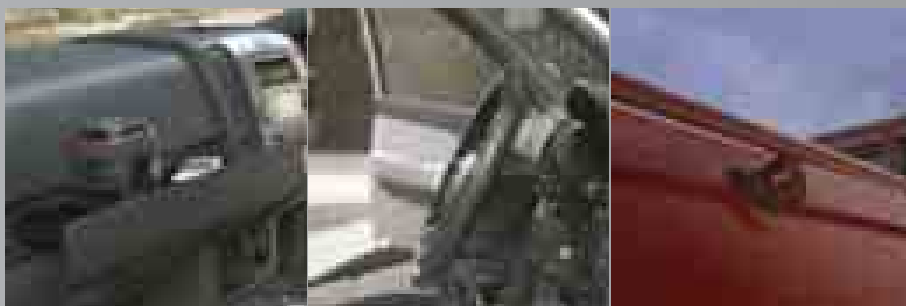


4x4 Double Cab TS



4x4 Double Cab TS²





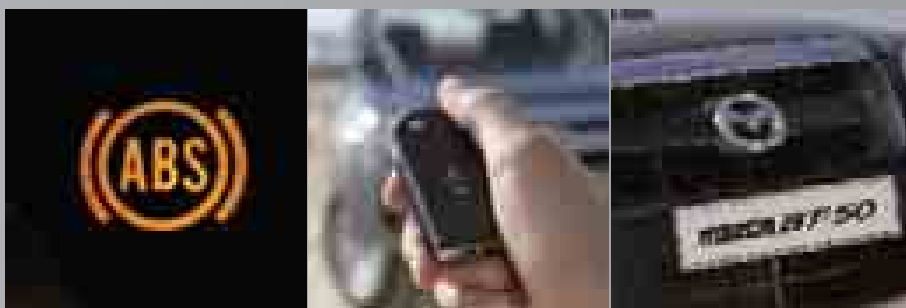
4x2 Single Cab key features:

- Slide-out tray
- Tilt-adjustable steering wheel
- Outer rope hooks
- 143ps (105kW) diesel engine with 330Nm of torque
- 2280 x 1456 x 465mm cargo box*



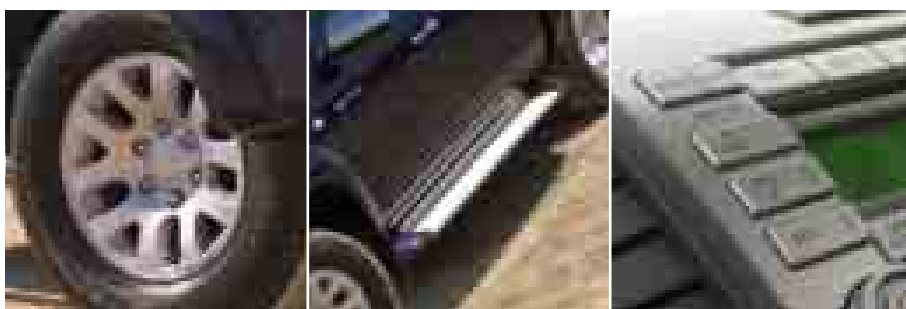
4x4 Single Cab key features:

- Air conditioning
- Electric windows
- Electrically-adjustable door mirrors
- 143ps (105kW) diesel engine with 330Nm of torque
- 2280 x 1456 x 465mm cargo box*



4x4 Double Cab TS key features:

- 4-wheel Anti-lock Braking System (4W-ABS) with Electronic Brake-force Distribution (EBD)
- Remote central locking
- Body-coloured front bumper and grille
- 143ps (105kW) diesel engine with 330Nm of torque
- 1530 x 1456 x 465mm cargo box*



4x4 Double Cab TS² key features:

- 16" alloy wheels
- Body-coloured side step bar
- 6-CD autochanger with MP3 compatibility
- 143ps (105kW) diesel engine with 330Nm of torque
- 1530 x 1456 x 465mm cargo box*

*Length x width x height.





1



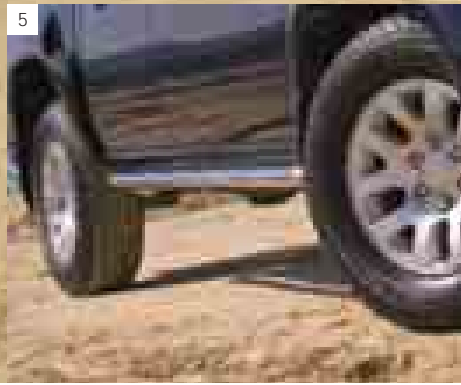
2



3



4



5



Stand out!

- 1 **Door mirror housing, chrome**
- 2 **Rear bumper, polished stainless steel**
- 3 **Front fog lights**
- 4 **Side steps**
- 5 **Tubular running-boards, polished stainless steel**

To make the most of every opportunity, you first need to have the right equipment. And there's no better place to find it than within the new Mazda BT-50's accessory range. Designed to turn heads, as well as to make your pick-up even more functional, they allow you to create a look that's as original as your own. Whether you're buying for work, leisure or both, there are accessories here to make your days easier and your weekends more fun.



1



2



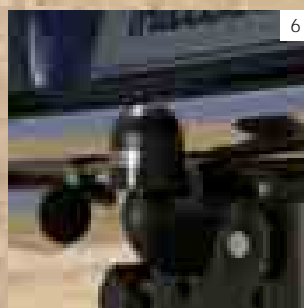
3



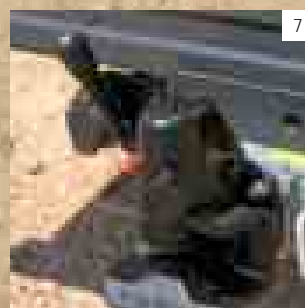
4



5



6



7



- 1,2 Tonneau cover, aluminium
- 3 Tonneau cover, soft type
- 4 Front and rear park assist sensors
- 5 Roll cover, jalousie type
- 6 Tow bar
- 7 Shackle-type towing device

Size it up

The new Mazda BT-50 has an insatiable appetite for the biggest tasks. Whatever your business, its generous payload means it will devour a combination of cargos. Tough bed liners help to protect your investment against accidental knocks and scrapes, and are complemented by purpose-designed tonneau covers to keep your gear clean and dry. Finally, a heavy-duty tow bar will ensure all your load carrying concerns are left safely behind you.



Lifestyle accessories

Personalise your Mazda BT-50 4x4 Double Cab by choosing the most stylish accessories Mazda offers – an elegant rear style bar and stainless scuff plates, durable load liner and interior mats. Lifestyle accessories let you dress to impress, wherever you roam.

Truckman tops

Truckman hardtops offer extra functionality and added security for your Mazda BT-50. They are steel-reinforced and come with an immensely strong rear door to protect your cargo. Relied upon by utility companies and rescue services, Truckman tops are tried and tested in the harshest of environments.



Load liner



Scuff plates



Carpet floor mats, standard or luxury

Mechanical Features and Model Availability

Engine:

- 2.5 MZR-CD
- 2499cc turbocharged, in-line 4-cylinder, 16-valve, DOHC, front mounted, developing 143ps (105kW) at 3500rpm and 330Nm at 1800rpm.
 - CO₂ emissions of 227g/km (4x2 Single Cab), 244g/km (4x4 Single and Double Cab) (EC Stage IV).
 - Oxidation catalyst.
 - Turbocharger with intercooler.
 - Electronic multi-point fuel injection.
 - Battery – 95D31R.
 - Alternator – 12V-70A.

Transmissions:

- 5-speed manual.
- Available in either 2WD or 4WD.

Body:

- Rigid and torsion-resistant all-steel body with defined crumple zones for the front and rear section, stable passenger safety cell with side impact reinforcement in the doors.

Chassis and Suspension:

- Front: Independent suspension with double wishbones, torsion bar and tubular double-acting shock absorbers.
- Rear: Leaf springs with double-acting shock absorbers.
- Remote Free Wheel hub locking system (RFW) (4WD only).
- Limited-slip differential (4WD only).

Brake System:

- Hydraulic, diagonally divided dual circuit system with vacuum amplifier.
- 4-wheel Anti-lock Braking System (4W-ABS) with Electronic Brake-force Distribution (EBD) (4x4 Double Cab only).
- Front: 256mm (2WD) / 289mm (4WD) ventilated disc brakes.
- Rear: 270mm (2WD) / 295mm (4WD) drum brakes.
- Mechanical parking brake acting on rear wheels.



Technical Data

Engine Type

	2.5 MZR Turbo Diesel 4x2	2.5 MZR Turbo Diesel 4x4
Displacement (cc)	2499	2499
Bore x stroke (mm)	93 x 92	93 x 92
Valves per cylinder	4	4
Maximum output [ps (kW) / rpm]	143 (105) / 3500	143 (105) / 3500
Maximum torque (Nm / rpm)	330 / 1800	330 / 1800
Compression ratio	18.0	18.0

Transmission

Type	Manual	Manual
Gear ratios:		
1st	3.905	3.905
2nd	2.248	2.248
3rd	1.491	1.491
4th	1.000	1.000
5th	0.800	0.800
Reverse	3.391	3.391
Final gear ratio (reduction gear)	3.416	3.727

Steering

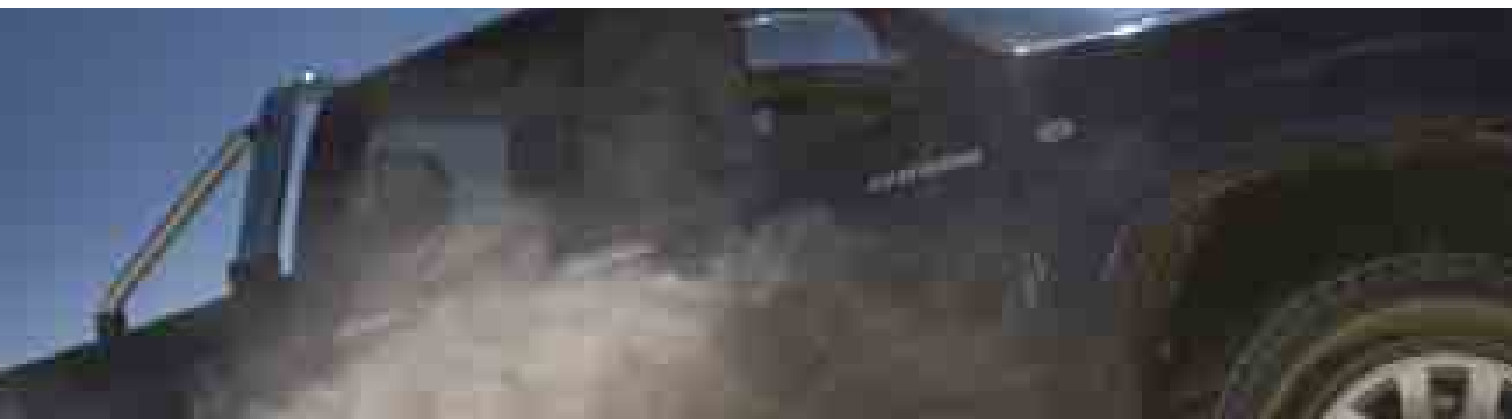
Steering gear	Power-assisted, ball and nut	
Minimum turning circle (kerb to kerb) (m)	12.0	12.6
Wheel turns (lock to lock)	3.92	3.92

Performance and Economy

Acceleration [0-62mph (0-100km/h) in sec]	10.4	11.9*
Top speed [mph (km/h)]	105 (170)	98 (158)
Fuel consumption ¹⁾ [mpg (l/100km)]:		
Urban	27.4 (10.3)	25.9 (10.9)
Extra Urban	39.7 (7.1)	36.2 (7.8)
Combined	34.0 (8.3)	31.7 (8.9)
CO ₂ emissions ¹⁾ (g/km)	227	244
EC emission level	EC Stage IV	
Recommended fuel	Diesel (Cetane No. 50)	
Fuel tank capacity (litres):		
Single Cab	70	70
Double Cab	-	70

¹⁾ Fuel consumption and CO₂ emissions values according to 1999/100/EC.

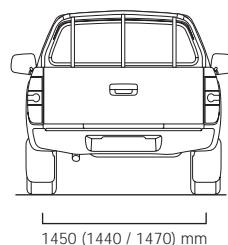
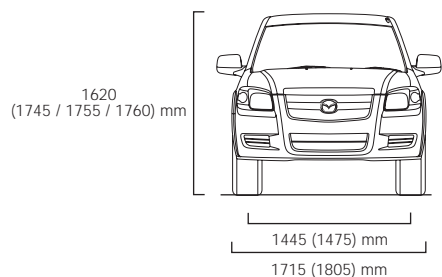
* Double Cab models 12.5 sec



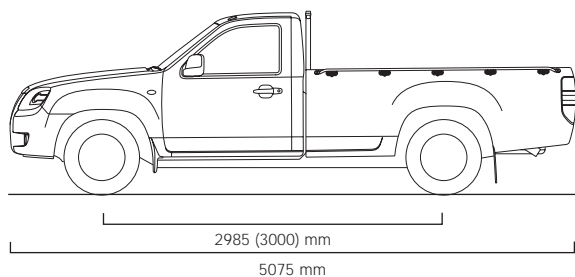
Technical Data

Dimensions and Weights

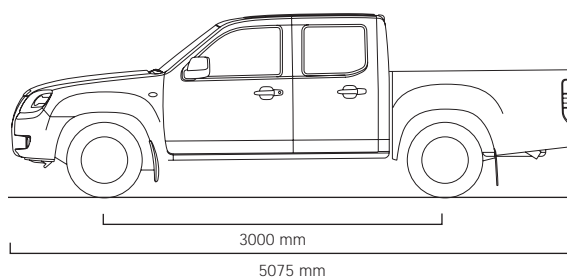
	4x2 Single Cab	4x4 Single Cab	4x4 Double Cab TS	4x4 Double Cab TS ²
Overall length (mm)	5075	5075	5075	5075
Overall width (mm)	1715	1805	1805	1805
Overall height (mm)	1620	1745	1755	1760
Front overhang (mm)	885	885	885	885
Rear overhang (mm)	1205	1190	1190	1190
Ground clearance between the axles – unladen (mm)	181	207	207	207
Wheelbase (mm)	2985	3000	3000	3000
Front track / Rear track (mm)	1445 / 1450	1445 / 1440	1445 / 1440	1475 / 1470
Cargo area (mm):	Length (at floor)	2280	2280	1530
	Height	465	465	465
	Width (at floor)	1456	1456	1456
	Width between wheel arches	1090	1090	1090
	Rear opening width	1328	1328	1328
Floor height to ground (mm)	669	803	798	805
Front cabin (mm):	Headroom	1012	1012	1012
	Leg room	1049	1049	1068
	Shoulder room	1405	1405	1405
Rear cabin (mm):	Headroom	–	–	963
	Leg room	–	–	831
	Shoulder room	–	–	1409
Brakes:	Ventilated front disc diameter (mm)	256	289	289
	Rear drum diameter (mm)	270	295	295
Permitted gross vehicle weight (kg)	2800	3010	3030	3030
Permitted axle load, front / rear (kg)	1080 / 1720	1240 / 1770	1230 / 1800	1230 / 1800
Payload (kg)	1208	1212	1137	1137
Towing limit (kg):	Unbraked	750	750	750
	Braked (12% gradient)	1600	3000	3000
Kerb weight (kg) min. / max. incl. driver (75kg)	1630 / 1667	1805 / 1873	1855 / 1968	1855 / 1968



Single Cab



Double Cab

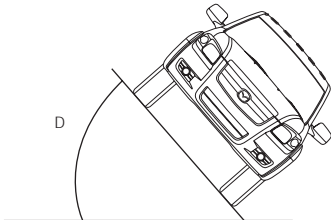
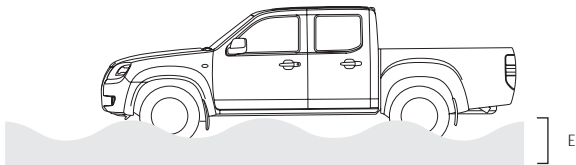
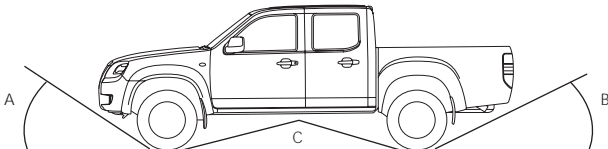


(Dimensions shown in brackets refer to 4x4 models)

Technical Data

Manoeuvrability

	4x2 Single Cab	4x4 Single Cab	4x4 Double Cab
A Angle of approach (unladen)	24°	34°	34°
B Angle of departure (unladen): To exhaust pipe	23°	33°	33°
C Ramp breakover angle (unladen)	-	16°	22°
D Tilt angle (unladen)	-	51°	48°
E Wading depth (mm)	400	750	750



Equipment

Safety and Security

	For image see pg	4x2 Single Cab	4x4 Single Cab	4x4 Double Cab TS	4x4 Double Cab TS*
4-Wheel Anti-lock Braking System (4W-ABS) with Electronic Brake-force Distribution (EBD)	19	–	–	●	●
Limited Slip Differential (LSD)		–	●	●	●
Driver and front passenger airbags		●	●	●	●
Front side airbags		–	–	●	●
Seatbelts:					
Front, two 3-point (ELR) with pre-tensioner		●	●	●	●
Rear, two 3-point (ELR) and 2-point centre seatbelt		–	–	●	●
Door impact bars		●	●	●	●
Thatcham Category 2 immobiliser		●	●	●	●
Thatcham Category 2 immobiliser and alarm system*		–	–	●	●

Additional Safety and Security Options

Baby and child seats: Baby Safe Plus (up to 13kg)		Please contact your dealer for further information and availability.
Duo Plus (9-18kg)		
Kid Plus (15-36kg)		
Child seat pillow		

Exterior

Tyres and wheels:					
215/70 R15C tyres with 6.5" x 15" steel wheels		●	–	–	–
235/75 R15 tyres with 6.5" x 15" styled steel wheels		–	●	●	–
245/70 R16 tyres with 7" x 16" alloy wheels	19	–	–	–	●
Full size spare wheel		●	●	●	●
Standard tyre tread pattern		●	–	–	●
Rough tyre tread pattern		–	●	●	–
Front grille:					
Black		●	●	–	–
Body colour		–	–	●	–
Chrome		–	–	–	●
Front bumper:					
Black		●	●	–	–
Body colour		–	–	●	●
Rear bumper bar:					
Black		–	●	●	●
Side step bar:					
Body colour	19	–	–	–	●
B-pillar, coloured trim		–	–	●	●
Door and tailgate handles:					
Black		●	●	–	–
Body colour		–	–	●	–
Chrome		–	–	–	●
Door mirrors:					
Manually adjustable, black housings		●	–	–	–
Electrically adjustable, black housings	19	–	●	–	–
Electrically adjustable, body colour housings		–	–	●	–
Electrically adjustable, chrome housings	20	–	–	–	●
Tinted window glass		●	●	●	●
Front wipers with 3-speed setting, intermittent wipe and electric wash		●	●	●	●
Halogen complex reflector headlights with manual headlight levelling		●	●	●	●
Rear combination lights		●	●	●	●
Front fog lights	20	–	–	–	●
Rear fog light		●	●	●	●
Wheel arch mouldings:					
Black		–	●	–	–
In body colour or Titanium Grey Metallic (please refer to colour chart)		–	–	●	●
Mudflaps:					
Front		●	●	●	●
Rear		●	●	●	●
Cargo box:					
Load rest		●	●	●	–
Outer rope hooks	19	●	●	●	–
Inner rope hooks		–	–	–	●
Mica / Metallic paint	35	○	○	○	●

● = Standard ○ = Option available at extra cost

* Some earlier models may not feature an alarm as standard – please refer to your Mazda dealer

Equipment

Additional Exterior Options

		For image see pg	4x2 Single Cab	4x4 Single Cab	4x4 Double Cab TS	4x4 Double Cab TS ²
Wheels:	15" alloy wheels (Design 116) (4x2 only)					
	16" alloy wheels (Design 117) (4x4 only)					
	Lockable wheel nuts					
	Wheel centre caps					
	Spare wheel lock					
Truckman top						
Door mirrors:	Chrome garnish					
Rear style bar:	Stainless steel, polished	22				
Side steps:	Strato Blue, painted					
	Titanium Grey, painted					
Side running-boards:	Stainless steel, polished, tubular type	20				
Rear bumper:	Stainless steel, polished	20				
Front fog lights		20				
Park assist sensor (audible signal):	Front	24				
	Rear					
Load liner:	Overrail type					
	Underrail type (4x4 only)	23				
Tow bar:	Detachable type (4x2 only)					
	Fixed type (4x4 only)	24				
	Swop system for tow bar					
	Shackle-type towing device for swop system	24				
	Tow bar harness (available in 7-pin and 13-pin)					
	Tow bar harness extension kit					
Roll cover:	Jalousie type	24				
Tonneau cover:	Aluminium	24				
	Soft type	24				

Please contact your dealer for further information and availability.



Equipment

Comfort and Convenience

	For image see pg	4x2 Single Cab	4x4 Single Cab	4x4 Double Cab TS	4x4 Double Cab TS ²
Central door locking		–	●	–	–
Remote central locking (with jack-knife type retractable key)	19	–	–	●	●
Power steering, engine rev. sensing		●	●	●	●
Windows:					
Manually-operated		●	–	–	–
Electrically-operated front with driver's one-touch lowering	19	–	●	●	●
Powercut (non-trap) system		–	●	●	●
Electrically-operated rear		–	–	●	●
Air conditioning	19	–	●	●	●
Sun visors:					
Driver's with ticket holder		●	●	●	●
Passenger's		●	●	–	–
Passenger's with vanity mirror		–	–	●	●
Remote opening fuel cap		●	●	●	●

Additional Comfort and Convenience Options

Floor mats:	Carpet floor mat set, 'Tailored', grey with BT-50 logo		Please contact your dealer for further information and availability.		
	Carpet floor mat set, 'Luxury', black with BT-50 logo	23			

● = Standard



Equipment

Interior Features		For image see pg	4x2 Single Cab	4x4 Single Cab	4x4 Double Cab TS	4x4 Double Cab TS ²
Seats and trim:	Grey cloth	34	●	–	–	–
	Black cloth	34	–	●	●	●
	Front reclining and height adjustment		●	●	●	●
	Heated front seats		–	–	–	●
	Height-adjustable front head restraints		●	●	●	●
	Integrated rear head restraints		–	–	●	●
	Rear centre armrest		–	–	●	●
Floor material:	Vinyl		●	●	–	–
	Cloth		–	–	●	●
Steering wheel:	Tilt adjustment	19	●	●	●	●
Shift knob:	Silver insert		–	–	–	●
Door inner handles:	Black finish		●	–	–	–
	Silver finish		–	●	●	●
Door switch panel, insert:	Silver finish		–	–	●	●
Grab handle:	Rear and front passengers		●	●	●	●
Audio systems:	AM/FM modular radio / single CD, two speakers (MP3 compatible)		●	●	–	–
	AM/FM modular radio / single CD, four speakers (MP3 compatible)		–	–	●	–
	6-CD autochanger, six speakers (MP3 compatible)	19	–	–	–	●
Digital clock		●	●	●	●	
Meter set:	Tachometer		●	●	●	●
	Fuel guage		●	●	●	●
	Water temperature guage		●	●	●	●
	Engine oil-pressure indicator		●	●	●	●
	Black-finish meter rings		●	●	●	–
	Silver-finish meter rings		–	–	–	●
Power outlets:	Front, two		●	●	●	●
Front ashtray		●	●	●	●	
Front centre console with storage box, stowage tray and two cup holders		–	–	●	●	
Further storage spaces:	Glovebox, lockable with illumination		●	●	●	●
	Dashboard panel upper tray		●	●	●	●
	Slide-out tray above glovebox	19	●	●	●	●
	Front door pockets with bottle holder		●	●	●	●
	Seatback pocket (passenger side)		–	–	●	●
	Rear door pockets		–	–	●	●
	Rear cup holders, two		–	–	●	●
Inner courtesy lights:	Header-mounted		●	●	●	●
	Map reading light		–	–	●	●

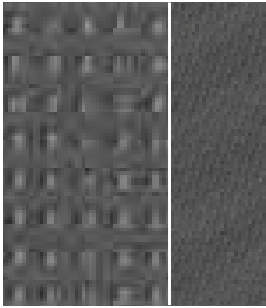
Additional Interior Options

Scuff plates:	Brushed stainless steel, with 'BT-50' logo	23	Please contact your dealer for further information and availability.
Portable satellite navigation system			
Audio systems:	iPod connector		

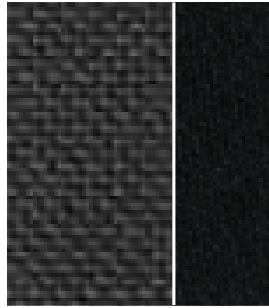
● = Standard



Colours and Seat Trims



Grey cloth



Black cloth

Model	4x2 Single Cab	4x4 Single Cab	4x4 Double Cab TS	4x4 Double Cab TS ²
Seat trim colour	Grey cloth	Black cloth	Black cloth	Black cloth
Solid Body Colours				
Cool White	■	■	■	–
Nifty Red	■	■	■	–
Mica / Metallic Body Colours*				
Black Mica	–	–	■	■
Gloaming Silver Metallic	■	■	■	■
Highlight Silver Metallic	■	■	■	■
Strato Blue Mica	–	–	■	■
Titanium Grey Metallic	■	■	■	■

■ = Available.

*Option available at extra cost. (Standard on 4x4 Double Cab TS²)

Where specified, body-coloured wheel arches only feature on models in Strato Blue Mica and Titanium Grey Metallic. Models in Cool White, Black Mica or Highlight Silver Metallic will feature Titanium Grey Metallic wheel arches.