



Your personal Mazda MX-5 Configurator

Now that you have read about the Mazda MX-5, here's your opportunity to create the model that's just right for you.

Overleaf, you will find a series of checkboxes. Simply tick the derivative and features of your choice, and keep it as a quick reminder of your preferred model. Alternatively, show it to your Mazda dealer who will be happy to arrange a test drive so you can experience the thrilling Mazda MX-5 for yourself.



Warranty Plus – 3-Year Cover

Every Mazda is designed and built to the highest standards of performance, comfort and reliability. For your further reassurance, Mazda also provides a full 3-year / 60,000 mile¹ warranty cover, including Mazda European Assistance, 3-year paintwork warranty and a 12-year anti-perforation warranty. ¹There is no mileage limit during the first year of the warranty.

Mazda Momentum – New Vehicle Extended Warranty

At any time during the manufacturer's warranty period, you may purchase a Mazda Momentum extended warranty package. Three options are available. Your Mazda dealer will be pleased to provide you with details.

Mazda Credit*

Mazda offers a variety of finance, leasing and payment protection schemes to suit the needs of both private and business customers. With our wide choice of plans and services, no-one is more committed to delivering complete motoring confidence and total peace of mind than Mazda and Mazda Credit.

Mazda MultiOption – Economical payments protected by any fall in car values, with three options to choose from at the end of the agreement.

Mazda MultiOption Cashplan – All the benefits of MultiOption but with no regular payments.

Mazda Hire Purchase – A simple, straightforward and traditional funding plan.

Mazda Business Partner

As a Mazda corporate customer, you'll find that Mazda vehicles are designed to fulfil the diverse needs of a modern company. Our corporate service offers attractive purchase prices, low running costs and market-driven residual values, resulting in extremely competitive ownership costs.

Mazda Digital Service Record

The Mazda Digital Service Record (DSR) system provides increased security against counterfeit service documents and odometer tampering, and makes it easy to keep the service history up to date. Stored on a central database, the DSR replaces the traditional paper service book and ensures a secure, accurate and permanent service history for the life of the vehicle.

Your Mazda dealer:

Mazda Motors UK Limited reserves the right to introduce changes in specification and equipment due to its ongoing product development. Colour and trim samples shown in this brochure may vary from the actual colours because of limitations in the printing process. It is recommended that you consult your Mazda dealer when referring to these.

*Finance subject to status. Guarantees / Indemnities may be required. Written quotations: Mazda Credit UK, Central Office, Eagle Way, Brentwood, Essex CM13 3AR.

Authorised and regulated by the Financial Services Authority.

Bose®, the Bose logo, AudioPilot®, Nd®, Richbass® and Nd®Richbass® are registered trademarks of Bose Corporation in the U.S. and other countries. Used with permission.

May 2008.

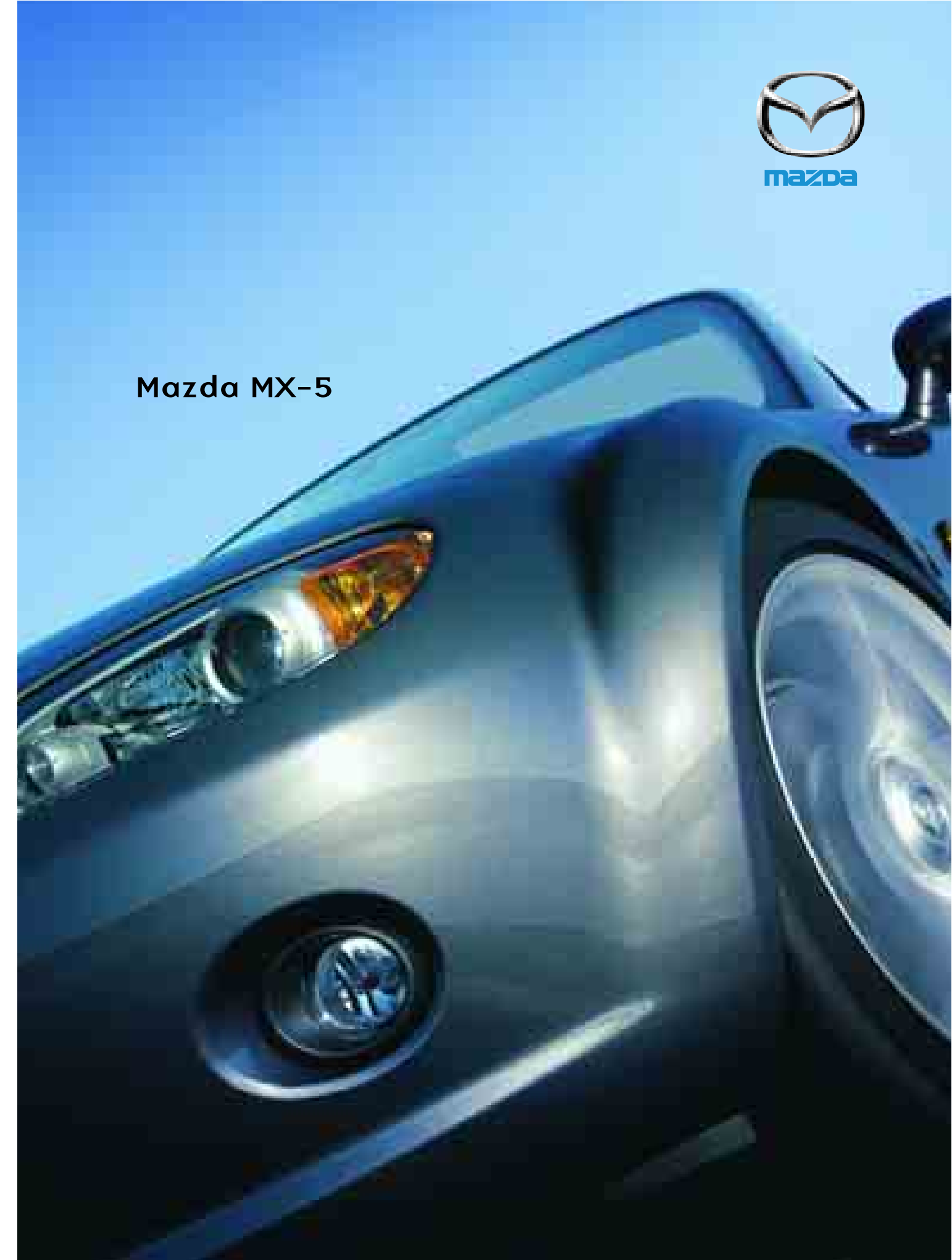
Internet: www.mazda.co.uk
Mazda Helpline: 08457 48 48 48



Part No. MCAG1051 05/08 (BIN 304325(UK/V1))



Mazda MX-5



zoom-zoom



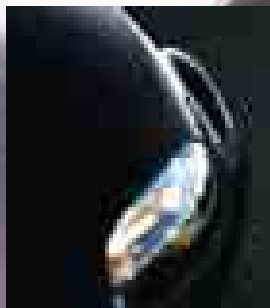
While the original Mazda MX-5 redefined the roadster, the latest generation breathes new spirit into an icon. Inspired by the philosophy of Jinba Ittai, 'rider and horse as one', Mazda engineers have created a sports car that effortlessly becomes one with its driver.

It's this unity that creates the perfect balance of elements for a thrilling driving experience – fun, excitement and adventure. It's a meeting of minds, a fusion, where everything works in harmony to deliver the ultimate adrenalin rush. Two distinct personalities merge to create the ultimate partnership.

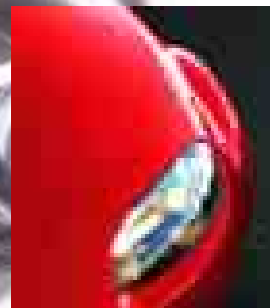
The Mazda MX-5. Now that's Zoom-Zoom.

Jinba Ittai

The passion behind the Mazda MX-5 drove us to achieve an affinity between car and driver never before imagined. This 'oneness' we call Jinba Ittai.



Brilliant Black



True Red



Copper Red Mica



Galaxy Grey Mica



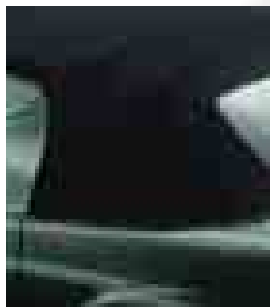
Highland Green Mica



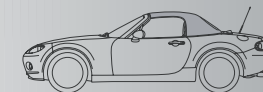
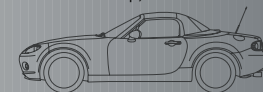
Stormy Blue Mica



Sunlight Silver Metallic



Black (vinyl or premium cloth)*

<p>Bodystyle MX-5 Soft-top</p> <p><input type="checkbox"/></p> 	<p>Bodystyle MX-5 Roadster Coupe (with retractable hard top)</p> <p><input type="checkbox"/></p> 
<p>Engine and Transmission</p> <p><input type="checkbox"/> 1.8i with 5-speed manual transmission</p> <p><input type="checkbox"/> 2.0i with 5-speed manual transmission</p> <p><input type="checkbox"/> 2.0i with 6-speed manual transmission (Sport model only)</p>	<p>Engine and Transmission</p> <p><input type="checkbox"/> 1.8i with 5-speed manual transmission</p> <p><input type="checkbox"/> 2.0i with 5-speed manual transmission</p> <p><input type="checkbox"/> 2.0i with 6-speed manual transmission (Sport model only)</p>
<p>Series derivative</p> <p><input type="checkbox"/> 1.8i</p> <p><input type="checkbox"/> 1.8i with Option Pack</p> <p><input type="checkbox"/> 2.0i with Option Pack</p> <p><input type="checkbox"/> 2.0i Sport</p>	<p>Series derivative</p> <p><input type="checkbox"/> 1.8i</p> <p><input type="checkbox"/> 2.0i</p> <p><input type="checkbox"/> 2.0i Sport</p>
<p>Options (please refer to pages 37-41 for full option listings)</p> <p><input type="checkbox"/> Climate control air conditioning and heated leather seats (1.8i with Option Pack and 2.0i with Option Pack only)</p> <p><input type="checkbox"/> Climate control air conditioning and Bose® audio system (2.0i Sport only)</p> <p><input type="checkbox"/> Mica / Metallic paint</p>	<p>Options (please refer to pages 37-41 for full option listings)</p> <p><input type="checkbox"/> Heated leather seats (1.8i and 2.0i only)</p> <p><input type="checkbox"/> Bose® audio system (2.0i Sport only)</p> <p><input type="checkbox"/> Mica / Metallic paint</p>
<p>Colour</p> <p><input type="text" value="e.g. Galaxy Grey Mica"/></p>	
<p>Trim</p> <p><input type="text" value="e.g. Black leather"/></p>	
<p>Service Options (e.g. customised finance and insurance packages, 'Service Plus' inspection package, extended new car warranty). Please refer to back cover.</p> <p><input type="text"/></p> <p><input type="text"/></p> <p><input type="text"/></p>	

* Soft-top only. Premium black cloth available as part of an Option Pack on Mazda MX-5 1.8i and standard on Mazda MX-5 2.0i and 2.0i Sport. Mazda MX-5 Roadster Coupe roof matches exterior paint colour.



6 Unity

Superb handling and driving dynamics.

8 Balance

Responsive engines and optimised weight means outstanding performance.

10 Mazda MX-5 Soft-top

Timeless beauty, undiluted fun.

12 Mazda MX-5 Roadster Coupe

A new dimension in open-top sports cars.

14 Harmony

Beauty, functionality and craftsmanship.

18 Trust

Comprehensive safety systems.

20 Personality

Model range and options.

34 The Mazda MX-5 in detail

Technical data, standard equipment, options, colour and trim.

Configurator.







unity

Feel connected. Feel alive. Feel the pounding of synchronised heartbeats.

Slide into the driver's seat, slip into gear, put your foot on the accelerator and the connection is instant. With its stiff chassis, precise steering and double-wishbone suspension, the Mazda MX-5 delivers advanced driving dynamics and incredible handling.

Mastering every twist and turn with ultimate precision, the Mazda MX-5 responds instantly to your every move. It's as if it can read your mind. In fact, you'll feel like your Mazda MX-5 is a kindred spirit.



Weight distribution

An excellent power-to-weight ratio and 50:50 weight distribution further enhance Mazda MX-5's performance and handling.

Engines

Choose the lively 1.8i MZR (126ps / 93kW) or the powerful 2.0i MZR (160ps / 118kW) – both delivering superb performance.



balance

Responsive. Precise. Nimble. It's all about getting the balance right.

How do you combine solid stability with a chassis that is keen to alter speed or direction in a fraction of a second? The answer is Mazda MX-5's 'gram strategy'. By intelligently locating major components and carefully scrutinising weight-trimming opportunities, Mazda engineers have made every gram count. Using new, high-strength, low-weight types of steel, weight-saving structures, and where appropriate, replacing steel with lighter material, Mazda engineers have succeeded in dramatically lowering the Mazda MX-5's overall weight.

The result is an impressive power-to-weight ratio, made even more effective through a combination of front engine and rear-wheel drive that gives a perfect 50:50 weight distribution. This, combined with Mazda's commitment to deliver breathtaking driving, cornering and braking performance, elevating the Mazda MX-5 into a class of its own.

So, whether you favour the 1.8i or 2.0i with a 5-speed manual transmission or 2.0i Sport with a 6-speed manual transmission, the result is a perfect blend of handling and performance.







Mazda MX-5 Soft-top

Stylish, sporty and beautifully crafted, the iconic Mazda MX-5 will turn heads everywhere with its muscular wheel arches and purposeful stance. But to really make the Mazda MX-5 come alive, simply drop the soft-top roof and allow your senses to soak up the drama of driving in the open air. This is pure roadster exhilaration at its best, and the very essence of the sensational Mazda MX-5.

Mazda MX-5 Roadster Coupe

The new Mazda MX-5 Roadster Coupe's retractable hardtop is a sheer masterpiece of engineering with style. Combining sleek coupe styling with timeless roadster looks, it adds the crowning touch to the Mazda MX-5's already stunning profile. Designed following our acclaimed 'gram strategy', the electrically-operated roof is as strong and as light as possible, retracting completely – with no intrusion into the luggage space – in a breathtaking 12 seconds.







harmony

When every detail is designed around you, you know you've found your soulmate.



The Mazda MX-5 effortlessly combines modern elegance and functionality. From the perfectly contoured sports seats and ergonomic gear knob to the contemporary alloy touches, every detail works in harmony to create a true sports car.

In the Mazda MX-5, the balance between intricate craftsmanship and simple style is perfection itself.



The Mazda MX-5 is the epitome of sportiness. With carefully crafted fabrics, sporty red-illuminated instrument dials, shiny alloy touches and piano black trim; you'll experience a personal indulgence on every journey.



Then there are the optional heated leather seats* and climate control air conditioning**. Equally important are the thoughtful storage features, which include a lockable centre console compartment, handy lockers located behind the seats (Mazda MX-5 soft-top models only), dual cup holders and door-mounted water bottle holders.

*Standard on Mazda MX-5 2.0i Sport. Leather refers to centre seat facing and side support.
**Standard on Mazda MX-5 Roadster Coupe models.



trust

Safety and performance can go hand in hand.



Airbag system

Mazda MX-5 2.0i and 2.0i Sport models feature dual front and side airbags for optimum protection in the event of a collision.



ABS and DSC

The Anti-lock Braking System (ABS) with Electronic Brake-force Distribution (EBD) adjusts the braking force to suit the handling, while Dynamic Stability Control (DSC)* responds to swerving tendency and stabilises the vehicle within milliseconds.

Freedom is the feeling of the wind rushing through your hair. Safety is the feeling that you're protected, however big the adrenalin rush. Mazda MX-5 successfully combines thrilling performance with advanced safety features for the ultimate driving experience.

As well as Dynamic Stability Control (DSC)* and a Traction Control System (TCS)*, the Mazda MX-5 also has a Limited Slip Differential (LSD)*, ensuring optimum engine power safely reaches the road when you are accelerating out of a tight turn. Then there's Mazda's Advanced Impact Distribution and Absorption System that efficiently disperses impact energy in a collision, and further safety features complete the picture, including a reinforced windscreen structure.

*Standard on Mazda MX-5 2.0i and 2.0i Sport models.



personality

Turn your passion up a level.



How far you take your passion for the Mazda MX-5 is entirely up to you. There are three models to choose from as well as selected option packages such as 16" alloy wheels, leather steering wheel with audio controls, leather gear knob and handbrake lever, stainless steel scuff plates and a premium cloth soft-top, or leather and climate control air conditioning pack for the ultimate luxury.

You can also choose from a range of stunning exterior colour choices* to suit your personality.

*Metallic / Mica paint optional at extra cost.



Premium audio entertainment.

All Mazda MX-5 1.8i, 2.0i and 2.0i Sport models provide superb sound quality with an MP3-compatible single CD/radio as standard. A comprehensive range of optional accessory modular audio components are also available, allowing you to build your in-car entertainment precisely as you choose.

The optional premium Bose® sound system* provides the ultimate in audio entertainment. Sophisticated automotive engineering meets sophisticated in-car sound engineering as Bose® and Mazda engineers worked in harmony to develop an immensely powerful 6-CD premium sound system tailored precisely to match the acoustics of the Mazda MX-5. Using digital amplifier technology, coupled to seven strategically positioned high-performance speakers, the system automatically alters its equalisation levels according to whether the roof is up or down.

In addition, an iPod connection is available as an accessory on all Mazda MX-5 models. Seamless iPod integration allows you to select the artist, album or playlist of your choice, as well as to skip between tracks or playlists, using the car's audio controls, with the device conveniently located in the glovebox.



Seven high-performance speakers:

- 1 One 8 cm neodymium mid-high-range speaker in the instrument panel.
- 2 Two 8 cm neodymium mid-high-range speakers in the doors.
- 3 Two 20 cm Nd® woofers in the doors.
- 4 Two 8 cm neodymium mid-high-range speakers in the rear firewall.

System electronics:

- 5 Digital amplifier mounted below roof-top storage space. Includes Bose® digital signal processing, AudioPilot® noise compensation technology and four channels of customised equalisation switching automatically between 'top up' and 'top down'.
- 6 AudioPilot® microphone mounted below the instrument panel monitors interior noise level.



Make your identity known

Choose from an extensive selection of alloy wheels and audio system components to give your Mazda MX-5 an extra individual touch. Then there are stylish and functional items, like a stainless steel front grille, aggressive front fog lights and a competition-inspired strut tower bar, all developed to enhance your driving experience.

1 **Bonnet dampers**
Stylish way to support the bonnet safely.

2 **Mesh grille, stainless steel**
An eye-catching and sporty addition.

3 **Mazda reversing aid**
Detects obstacles in front and behind your car.

4 **Mudflaps, front and rear**
Protects the bodywork from dirt and stone chips.

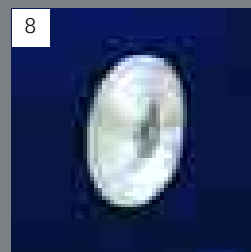
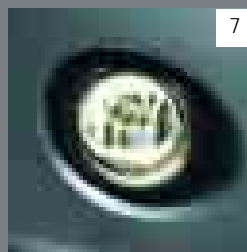
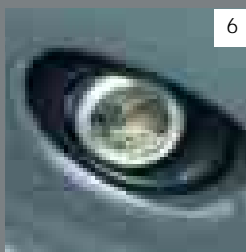
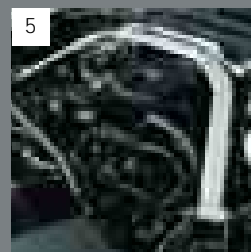
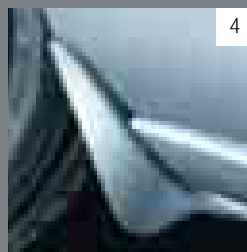
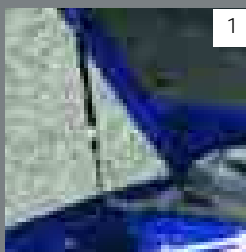
5 **Strut tower bar**
Delivers even more focused handling.

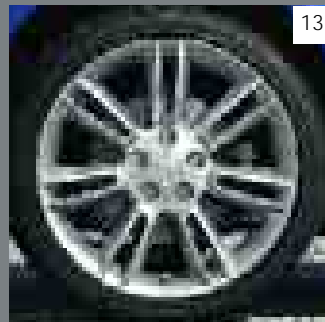
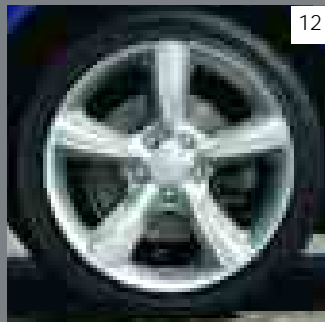
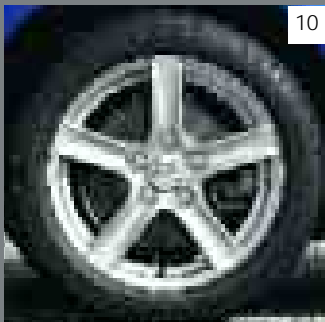
6 **Front fog lights**
Good looks and clear vision.

7 **Front fog lights, projector-type**
Added style, superior illumination.

8 **White side markers**
Pair of replacement white side marker lenses, complete with bulbs.

9 **Suspension-lowering kit by Eibach**
Lowers the ride height for even sharper handling and visual style.





10 **16" alloy wheel***
in 5-spoke design (Design 110).

11 **17" alloy wheel****
in 10-spoke design (Design 111).

12 **17" alloy wheel**
in 5-spoke design (Design 39).

13 **18" alloy wheel**
in 7x2-spoke design (Design 40).

*Standard on models equipped with Option Pack.
**Standard on 2.0i Sport models.



- | | | | |
|---|---|---|---------------------|
| 1 | Front air dam skirt / Front mesh grille (stainless steel) | 3 | Side air dam skirts |
| 2 | Rear air dam skirt | 4 | Rear lip spoiler |



On the right lines

With its classic iconic design, the Mazda MX-5 is the sports car to be seen in. Whatever your taste, you can now make even more of a style statement with an exciting range of bodystyling accessories. From a dynamic front air dam skirt to a stainless steel mesh grille and subtle rear lip spoiler, you are sure to find something to whet your appetite.

Sporting ambitions

Enhance your new Mazda MX-5's muscular appearance with the sports styling kit. From the aggressive front aero bumper to the aerodynamic rear lip spoiler, each design element has been specially developed to deliver great looks and performance. Just one look in the rear-view mirror and those in front will know instantly what's on their tail.



1 Sporty front aero bumper

2 Sporty side air dam skirts

3 Sporty rear aero bumper

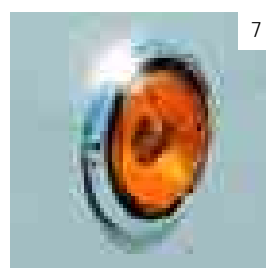
4 Sporty rear lip spoiler



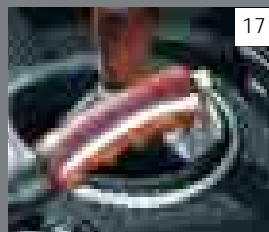
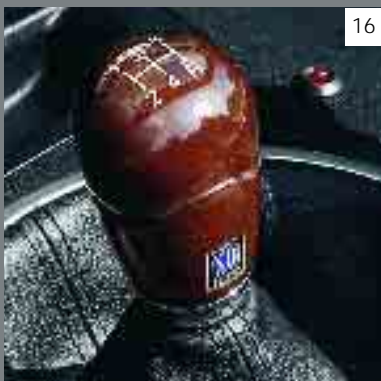
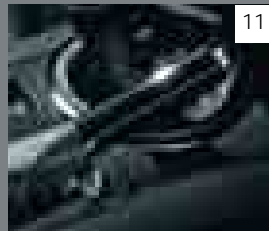
Smart moves

Want to enhance your Mazda MX-5's bright, sparkling character? Then take a look at our eye-catching range of contemporary brushed and polished aluminium accessories. While, for traditionalists, the Nardi wooden gear knob and handbrake lever elegantly combine classic good looks with maximum control.

- 1 Style bar trims
- 2 Wind deflector, clear type
- 3 Wind deflector, mesh type
- 4 Chrome exhaust trim
- 5 Fuel filler lid, brushed and polished aluminium finishes
- 6 Door handle covers, brushed and polished aluminium finishes
- 7 Side marker ring, brushed and polished aluminium finishes
- 8 Scuff plate set

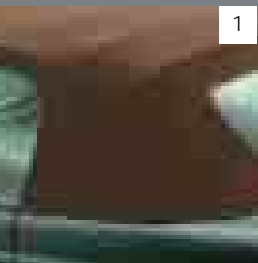


- 9 **Dashboard panel kit finish**
Available finishes of brushed aluminium, wood, Classic Red and Galaxy Grey.
- 10 **Gear knob, piano black finish, with or without illumination**
- 11 **Handbrake lever, piano black finish**
- 12 **Speaker bezel, piano black finish**
- 13 **Handbrake lever, brushed aluminium finish**
- 14 **Speaker bezel, brushed aluminium finish**
- 15 **Gear knob, brushed aluminium finish, with or without illumination**
- 16 **Gear knob, wood**
With Nardi logo.
- 17 **Handbrake lever, wood**
- 18 **Aluminium footrest**
- 19 **Sports pedals in alloy**

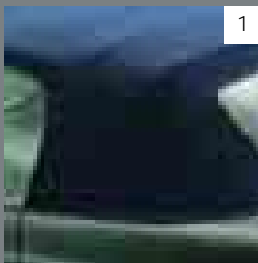


The finishing touch

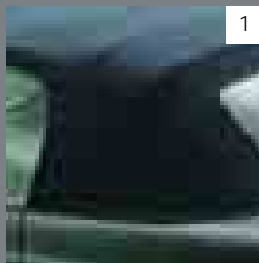
The Mazda MX-5 is engineered for real life. So you will find a range of lifestyle options, including child seats, luggage carrying systems, tailored luggage packs and Smartnav navigation. Indeed, all that you need for a weekend away or to help tackle the challenges of everyday driving.



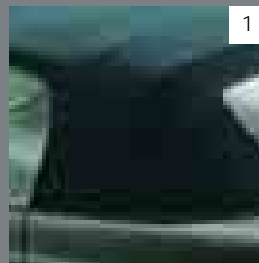
1



1



1



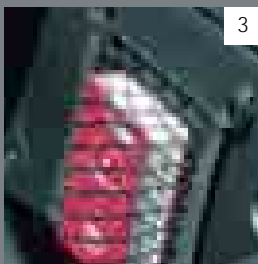
1



1



2



3



4



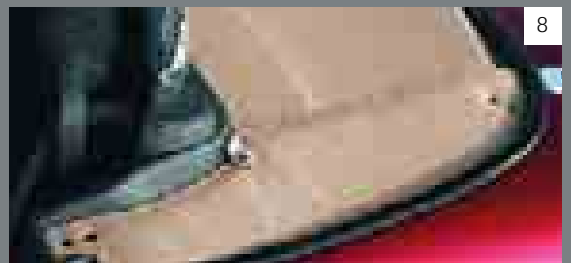
5



6



7



8



9



10



11



12



13



14



15

- 1 **Premium cloth roof trims**
A choice of tan, blue, grey, green and crème colours.
- 2 **Luxury or tailored car mat set**
- 3 **Front tunnel storage net**
- 4 **Boot liner**
- 5 **Ashtray kit**
- 6 **Storage box, lockable**
- 7 **Outdoor cover**
Indoor cover also available.
- 8 **Cloth side tonneau cover**
A choice of tan, blue, grey, green, black and crème colours.
- 9 **iPod connector located in glovebox**
- 10 **NaviMaster (by Siemens VDO) portable satellite navigation system**
- 11 **Detachable hardtop wall hanging bracket**
- 12 **Supagard protection kit**
Supagard soft-top cleaner also available.
- 13 **Boot-lid luggage carrier***
- 14 **Boot-lid carrier, suitcase and leather belts***
- 15 **Detachable hardtop***

*For soft-top models only.

Mechanical Features and Model Availability

Engines:

- 1.8i Petrol
 - 1798cc in-line 4-cylinder, 16-valve, DOHC, developing 126ps (93kW) at 6500rpm and 167Nm at 4500rpm.
 - CO₂ emissions of 174g/km (EC Stage IV).
 - Electronic fuel injection.
 - Battery – 46B24L.
 - Alternator – 100A.

- 2.0i Petrol
 - 1999cc in-line 4-cylinder, 16-valve, DOHC, developing 160ps (118kW) at 6700rpm and 188Nm at 5000rpm.
 - CO₂ emissions of 183g/km (2.0i), 193g/km (2.0i Sport) (EC Stage IV).
 - Electronic fuel injection.
 - Battery – 46B24L.
 - Alternator – 100A.

Transmissions:

- 5-speed (1.8i and 2.0i engines) or 6-speed (2.0i Sport only) manual – Giving precise, positive shift feel to provide a feeling of unity between driver and vehicle.
- Rear-wheel drive.

Body:

- Self-supporting rigid and torsion-resistant all-steel body with defined crumple zones for the front and rear sections, stable passenger safety cell with side impact reinforcement in the doors.
- Mazda Advanced Impact Distribution and Absorption System (MAIDAS) designed to secure the critical interior space in the event of an accident.
- Supplementary Restraint System (SRS) – Central control unit and crush sensors, seatbelt pre-tensioners, load limiters and airbag system.
- Two seats.
- Manually-operated soft-top (with detachable hardtop available as an optional accessory at extra cost) or electrically-operated retractable hardtop for Roadster Coupe.

Chassis and Suspension:

- Front: Independent double-wishbone suspension with gas-filled, monotube shock absorbers and aluminium upper and lower arms for low unsprung weight.
- Rear: Multi-link suspension with optimised geometry and gas-filled, monotube shock absorbers.
- Suspension strut tower bar (Sport only).

Brake System:

- Four-wheel Anti-lock Braking System (ABS) with Electronic Brake-force Distribution (EBD).
- Front: 290mm diameter ventilated discs.
- Rear: 280mm diameter discs.

Model Availability	1.8i	2.0i
Base	■	-
Option Pack	■	■
Sport	-	■

■ = Available.

Technical Data

Engine Type	1.8i	2.0i	2.0i Sport
Displacement (cc)	1798	1999	1999
Bore x stroke (mm)	83.0 x 83.1	87.5 x 83.1	87.5 x 83.1
Valves per cylinder	4	4	4
Maximum output [ps (kW) / rpm]	126 (93) / 6500	160 (118) / 6700	160 (118) / 6700
Maximum torque (Nm / rpm)	167 / 4500	188 / 5000	188 / 5000
Compression ratio	10.8:1	10.8:1	10.8:1

Transmission

Type		5-speed manual	5-speed manual	6-speed manual
Gear ratios:	1st	3.136	3.136	3.709
	2nd	1.888	1.888	2.190
	3rd	1.330	1.330	1.536
	4th	1.000	1.000	1.177
	5th	0.814	0.814	1.000
	6th	–	–	0.832
	Reverse	3.758	3.758	3.603
Final gear ratio		4.100	4.100	3.727

Steering

Steering gear	Power-assisted rack and pinion		
Minimum turning circle (wall-to-wall) (m)	10.0	10.0	10.0

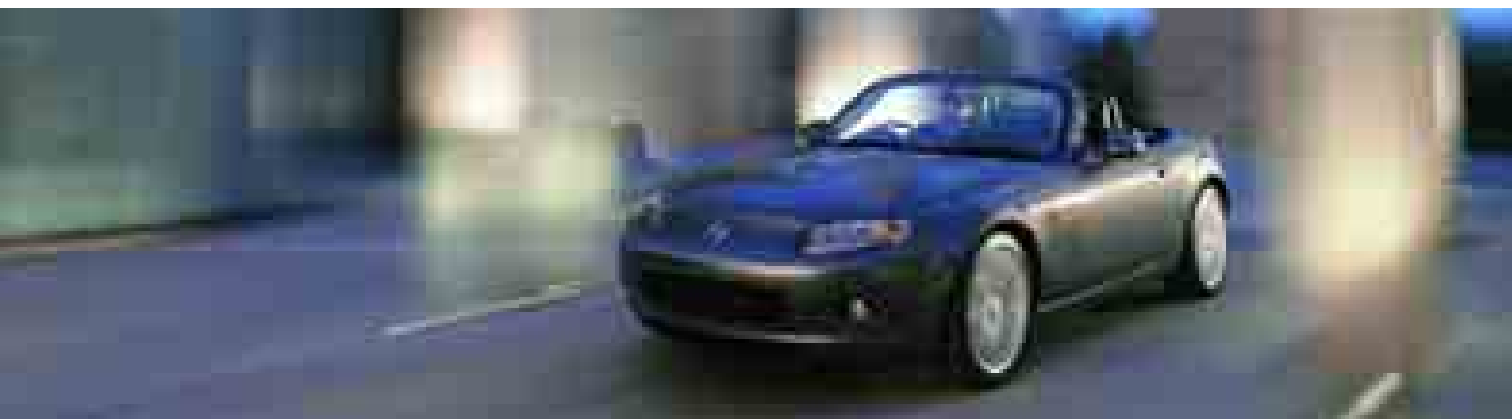
Performance and Economy

Acceleration 0-62mph (0-100km/h in sec) ¹⁾		9.4	7.9	7.9
Top speed (mph) ²⁾		122	131	131
Fuel consumption ³⁾ [mpg (L/100km)]:	Urban	28.5 (9.9)	26.7 (10.6)	25.2 (11.2)
	Extra Urban	48.7 (5.8)	47.1 (6.0)	43.5 (6.5)
	Combined	38.7 (7.3)	36.7 (7.7)	34.5 (8.2)
CO ₂ emissions ³⁾ (g/km)		174	183	193
EC emission level		EC Stage IV		
Recommended fuel		Unleaded 95 RON		
Fuel tank capacity (litres)		50	50	50

¹⁾ Acceleration for Mazda MX-5 Roadster Coupe is 9.6 (1.8i), 8.3 (2.0i), 8.2 (2.0i Sport).

²⁾ Top speed for Mazda MX-5 Roadster Coupe is 124 (1.8i), 134 (2.0i and 2.0i Sport).

³⁾ Fuel consumption value according to 80/1268 EWG (1999/100/EC).



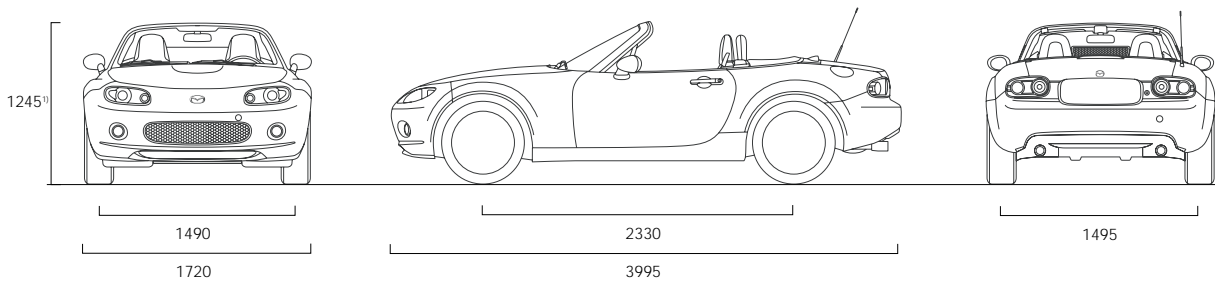
Technical Data

Dimensions and Weights	1.8i	2.0i	2.0i Sport
Overall length / width / height (mm)	3995 / 1720 / 1245 ¹⁾	3995 / 1720 / 1245 ¹⁾	3995 / 1720 / 1245 ¹⁾
Ground clearance between the axles – unladen (mm)	136	136	136
Front track / Rear track (mm)	1490 / 1495	1490 / 1495	1490 / 1495
Wheelbase (mm)	2330	2330	2330
Headroom / leg room / shoulder room (mm)	950 ²⁾ / 1096 / 1352	950 ²⁾ / 1096 / 1352	950 ²⁾ / 1096 / 1352
Cargo volume, acc. to VDA (l)	150	150	150
Brake discs: Ventilated front disc diameter (mm)	290	290	290
Rear disc diameter (mm)	280	280	280
Kerb weight (kg) incl. driver (75kg)	1155 ³⁾	1155 ³⁾	1170 ³⁾
Permitted gross vehicle weight (kg)	1365	1365	1365
Permitted axle load, front / rear (kg)	665 / 705	665 / 705	670 / 705
Engine oil capacity (l)	4.6	4.6	4.6

¹⁾ Overall height for Mazda MX-5 Roadster Coupe is 1255mm.

²⁾ Headroom for Mazda MX-5 Roadster Coupe is 940mm.

³⁾ Kerbweight for Mazda MX-5 Roadster Coupe additionally includes 37kg (for retractable hardtop) which is added to base value.



Equipment

Safety and Security

	For image, see pg	1.8i	2.0i	2.0i Sport
Mazda Advanced Impact Distribution and Absorption System (MAIDAS)	19	●	●	●
Supplementary Restraint System (SRS) – Central control unit and crush sensors, seatbelt pre-tensioners, load limiters and airbag system		●	●	●
Four-wheel Anti-lock Braking System (ABS) with Electronic Brake-force Distribution (EBD)	19	●	●	●
Four-wheel disc brakes (front: ventilated, rear: solid)		●	●	●
Dynamic Stability Control (DSC) with Traction Control System (TCS)	19	–	●	●
Limited-Slip Differential (LSD)		–	●	●
Dual front airbags	19	●	●	●
Passenger airbag deactivation system		●	●	●
Side airbags	19	–	●	●
Seatbelts: 3-point (ELR) x 2 with pre-tensioner and force limiter		●	●	●
Seatbelt reminder (sound warning)		●	●	●
ISOFIX child seat anchorages (passenger side)		●	●	●
Thatcham Category 1 alarm and immobiliser		●	●	●

Additional Safety and Security Options

Baby and child seats: Baby Safe Plus (up to 13kg)		Please contact your dealer for further information and availability.		
ISOFIX Duo Plus (9-18kg)				
Kid Plus (15-36kg)				

Exterior

Tyres and wheels: 205/50 R16 with 6.5J 16" steel wheels		●	–	–
205/50 R16 with 6.5J 16" 5-spoke alloy wheels (Design 110)	25	□	●	–
205/45 R17 with 7J 17" 10-spoke alloy wheels (Design 111)	25	–	–	●
Puncture repair kit		●	●	●
Sport suspension (Bilstein dampers)		–	–	●
Suspension strut bar: Black		–	–	●
Bumper, front and rear: Body colour		●	●	●
Exhaust: Twin-exit tailpipes		●	●	●
Door handles: Body colour		●	●	●
Headlights: Halogen, manual levelling		●	●	●
Front fog lights: Standard type	24	–	–	●
Rear brake light: High-mounted		●	●	●
Rear fog light		●	●	●
Door mirrors: Power-operated and heated, body colour housings		●	●	●
Windscreen glass: Front HPR laminated, green		●	●	●
Specific features for models with soft-top: Black vinyl soft-top with integrated heated glass window, manually-operated	43	●	–	–
Premium black cloth soft-top with integrated heated glass window, manually-operated	43	□	●	●
Retractable hardtop (Mazda MX-5 Roadster Coupe): Body-coloured, with integrated heated rear glass window, electrically-operated		●	●	●
Style bar cladding: Brushed aluminium		–	–	●
Fuel filler lid: Body colour		●	●	●
Mica / Metallic paint	43	○	○	○

● = Standard; ○ = Option available at extra cost; □ = Part of an Option Pack at extra cost.

Equipment

Additional Exterior Options

		For image, see pg	1.8i	2.0i	2.0i Sport
Tyres and wheels:	205/50 R16 with 6.5J 16" 5-spoke alloy wheel (Design 110)	25			
	205/45 R17 with 7J 17" 10-spoke alloy wheel (Design 111)	25			
	205/45 R17 with 7J 17" 5-spoke alloy wheel (Design 39)	25			
	205/40 R18 with 8J 18" 7x2-spoke alloy wheel (Design 40)	25			
Lowering suspension kit by Eibach		24			
Strut tower bar:	Aluminium	24			
Bonnet dampers		24			
Sports Styling Pack I:	Front airdam skirt, side airdam skirts, rear airdam skirt and rear lip spoiler ¹⁾	26/27			
Sports Styling Pack II:	Front and rear sporty aero bumpers, sporty side airdam skirts and sporty 3-piece rear spoiler ¹⁾	28/29			
Exhaust:	Chrome trim for both standard tailpipes	30			
Front mesh grille:	Stainless steel (not available with Sports Styling Pack II)	24			
Mudflaps:	Front (not available with Sports Styling Packs)	24			
	Rear (not available with Sports Styling Packs)	24			
Door handles:	Body colour with polished aluminium insert	30			
	Body colour with brushed aluminium insert	30			
Side marker ring:	Polished aluminium	30			
	Brushed aluminium	30			
Front fog lights:	Standard type	24			
	Projector type	24			
Mazda reversing aid (acoustic signal):	Rear (not available with Sports Styling Packs)	28			
	Front and rear (not available with Sports Styling Packs)				
Specific features for models with soft-top:	Premium cloth soft-top with integrated heated glass window, manually-operated (available in black, tan, blue, grey, green or cream trim)	32			
	Side tonneau covers (available in black, tan, blue, grey, green or cream trim)	32			
Style bar cladding:	Chrome	30			
	Polished aluminium				
Trunk lid carrier system ⁴⁾ :	Trunk rack, base, with built-in brake light, 15kg maximum load capacity	33			
	Aluminium suitcase, with MX-5 logo, including fixing rails (requires leather belts for fitment on trunk rack base)	33			
	Leather belts, required to fix suitcase on trunk rack base	33			
	Ski / snowboard attachment for trunk rack base				

Please contact your dealer for further information and availability.

¹⁾ All parts are separately available. Rear spoiler not suitable for Mazda MX-5 Roadster Coupe.



Equipment

Comfort and Convenience

	For image, see pg	1.8i	2.0i	2.0i Sport
Remote central locking with deadlocking and boot release		●	●	●
Power steering		●	●	●
Electric windows with one-touch auto down (driver's side only)		●	●	●
Air conditioning: Climate control	16	○ ³⁾	○ ³⁾	○ ²⁾
Climate control (Mazda MX-5 Roadster Coupe)	16	●	●	●
Boot lid opener, electric		●	●	●
Fuel flap opener		●	●	●
Driver footrest		●	●	●

Additional Comfort and Convenience Options

Floor mats: Carpet floor mat, 'Tailored', black, with MX-5 logo	32	Please contact your dealer for further information and availability.		
Carpet floor mat, 'Luxury', black, with MX-5 logo	32			

Interior

Sport seats and integral head restraint:	Driver and passenger recline adjustment		●	●	●
	Driver and passenger fore and aft adjustment		●	●	●
	Driver seat height adjustment		●	●	●
	Black cloth trim	42	●	●	–
	Black leather trim* with integrated seat warmer (Soft-top)	42	○ ³⁾	○ ³⁾	●
Windblocker	Black leather trim* with integrated seat warmer (Mazda MX-5 Roadster Coupe)	42	○	○	●
		17	●	●	●
Steering wheel:	Urethane, black		●	–	–
	Leather, with audio controls, black	17	□	●	●
Gear knob:	Urethane, black		●	–	–
	Leather, black		□	●	–
	Leather, black with silver insert	17	–	–	●
Handbrake:	PVC lever with black release button		●	–	–
	Leather lever with silver release knob		□	●	●
Scuff plates:	Plastic		●	–	–
	Stainless steel, polished, with MX-5 logo	17/30	□	●	●
Interior door handles: Silver			●	●	●

● = Standard; ○ = Option available at extra cost; □ = Part of an Option Pack available at extra cost.

*Leather refers to centre seat facing and side supports.

²⁾ Bose® audio system and climate control air conditioning available on soft-top Sport models as a dual option.

³⁾ Leather trim and climate control air conditioning available on soft-top Option Pack models as a dual option.

⁴⁾ Not available for Mazda MX-5 Roadster Coupe.



Equipment

Interior		For image, see pg	1.8i	2.0i	2.0i Sport
Audio:	MP3-compatible AM/FM radio with single CD player	16	●	●	●
	Four speakers		●	–	–
	Six speakers		□	●	●
	MP3-compatible AM/FM radio and premium Bose® sound system with 6-CD autochanger (includes seven speakers, a digital amplifier with four channels of customised equalisation switching automatically between top-up and top-down) ¹⁾	22/23	–	–	○
	Steering wheel-mounted audio controls		□	●	●
Meter set:	Engine oil-pressure indicator (gauge-type)		●	●	●
	Water temperature gauge		●	●	●
	Amber-red illumination		●	●	●
	Silver-finish meter rings		●	●	●
Instrument panel trim: Piano black		●	●	●	
Headlights on reminder (sound warning)		●	●	●	
Digital clock combined with audio unit		●	●	●	
Interior light located on windscreen headrail		●	●	●	
Inner mirror (day / night)		●	●	●	
Console with cup holders		●	●	●	
Lockable glovebox		●	●	●	
Further storage spaces:	Seatback pocket (driver side)		●	●	●
	Rear centre box with lid (lockable)	16	●	●	●
	Door multi-pockets		●	●	●
	Front tunnel storage net (passenger side)		□	●	●

Additional Interior Options

Windblocker:	Clear type	30	Please contact your dealer for further information and availability.
	Mesh type	30	
Gear shift knob:	Brushed aluminium, with or without illumination	31	
	Piano black, with or without illumination	31	
	Wood (mahogany) with Nardi logo	31	
Gear shift plate ring:	Piano black		
Handbrake lever:	Piano black	31	
	Brushed aluminium	31	
	Wood (mahogany)	31	
Scuff plates:	Stainless steel, brushed, with MX-5 logo	30	
Foot pedals:	Aluminium	31	
	Footrest, aluminium	31	
Audio:	MD module		
	6-CD MP3 changer module (not available with Bose® sound system)		
	iPod connectivity	32	
Smartnav satellite navigation system		32	
Instrument panel trim:	Brushed aluminium	31	
	Wood	31	
	'Classic Red'	31	
	'Galaxy Grey'		
Door speaker bezels:	Brushed aluminium finish (standard if specified with Bose® sound system)	31	
	Piano black	31	
Ashtray kit:	Fits into front door cup holders	32	
Cigarette lighter			
Rear trim storage recesses ³⁾ :	Behind front seats, with lockable lids in stainless steel with MX-5 logo	32	
Trunk options:	Trunk liner with MX-5 logo		

● = Standard; ○ = Option available at extra cost; □ = Part of an Option Pack available at extra cost.

¹⁾ Bose® audio system and climate control air conditioning available as a dual option on soft-top Sport models only. Bose® audio system available as a single option on Mazda MX-5 Roadster Coupe 2.0i Sport.

Equipment

Vehicle Protection

		For image, see pg	1.8i	2.0i	2.0i Sport
Body cover:	Indoor, with Mazda logo				
	Outdoor, with Mazda logo	32			
Storage for detachable hardtop:	Hardtop rack	33			
	Hardtop cover				

Please contact your dealer for further information and availability.

Option Availability

	1.8i	2.0i	2.0i Sport
Option Pack including premium cloth soft-top, stainless steel scuff plates, leather steering wheel with audio controls, leather gear knob, leather handbrake lever with silver release knob, 16" alloy wheels, two additional speakers and front tunnel storage net	○ ²⁾	●	●
Heated leather seats*	○ ⁴⁾	○ ⁴⁾	●
Climate control air conditioning and heated leather seats* (dual option) (only available with Option Pack on Mazda MX-5 soft-top)	○ ³⁾	○ ³⁾	-
Climate control air conditioning and Premium Bose® audio system (dual option) with 6-CD autochanger, seven speakers, a digital amplifier with four channels of customised equalisation switching automatically between top-up and top-down	-	-	○ ³⁾
Premium Bose® audio system with 6-CD autochanger, seven speakers, a digital amplifier with four channels of customised equalisation switching automatically between top-up and top-down	-	-	○ ⁴⁾
Metallic paint	○	○	○

● = Standard; ○ = Option available at extra cost.

* Leather refers to centre seat facing and side supports.

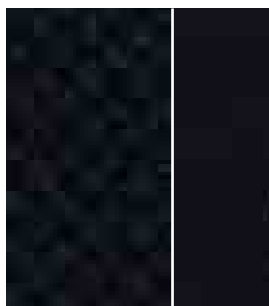
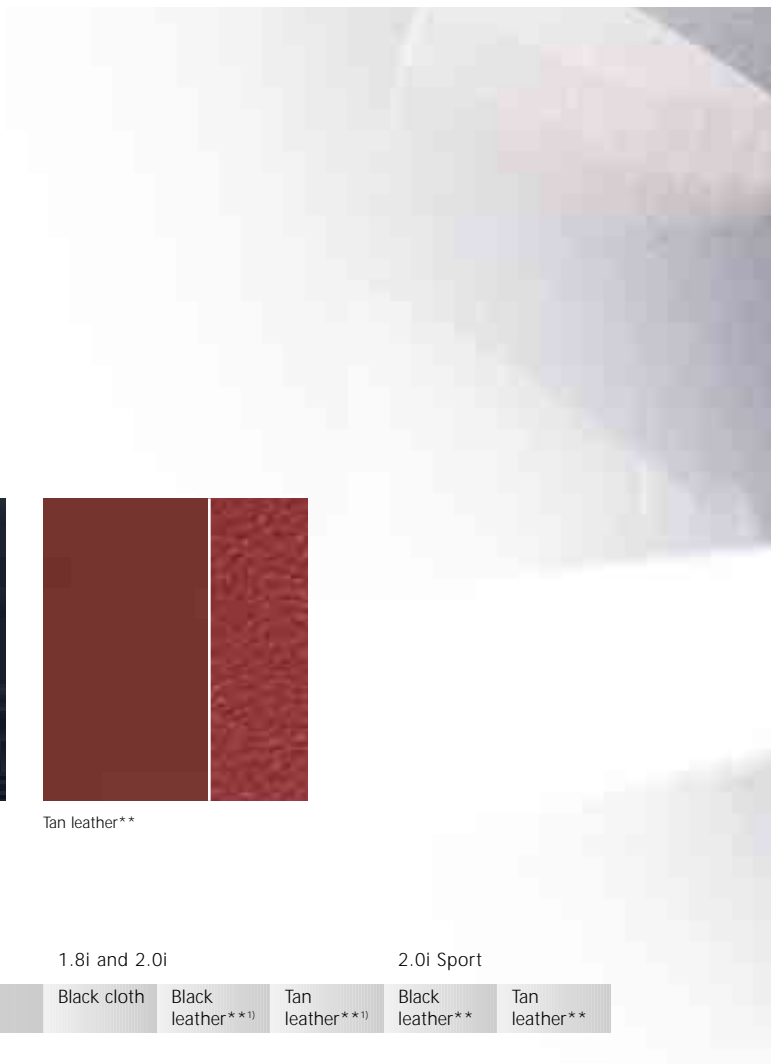
²⁾ Standard on Mazda MX-5 Roadster Coupe.

³⁾ Not available for Mazda MX-5 Roadster Coupe.

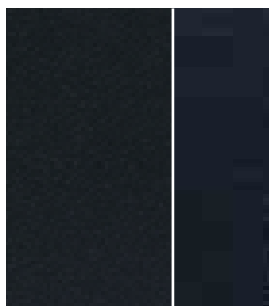
⁴⁾ Available on Mazda MX-5 Roadster Coupe only.



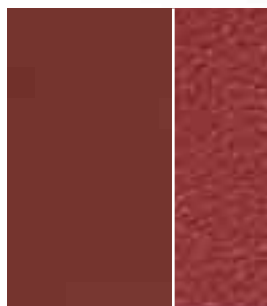
Colours, Seat and Soft-Top Trims



Black cloth



Black leather**



Tan leather**

Model	1.8i and 2.0i			2.0i Sport	
	Black cloth	Black leather***)	Tan leather***)	Black leather**	Tan leather**
Interior trim					

Solid Body Colours

Brilliant Black	■	■	■	■	■
True Red	■	■	-	■	-

Mica and Metallic Body Colours*

Copper Red Mica	■	■	-	■	-
Galaxy Grey Mica	■	■	■	■	■
Highland Green Mica	■	■	■	■	■
Stormy Blue Mica	■	■	-	■	-
Sunlight Silver Metallic	■	■	-	■	-

■ = Available.

* Option available at extra cost.

** Leather refers to centre seat facing and side supports.

†) Leather trim available as a dual cost option with climate control air conditioning.