



SHIFT_ is an English word from a Japanese car company that best embraces our values and the mission of this corporation. No matter where you are in the world, SHIFT_ is the way we express who we are, how we work and what we are trying to accomplish. Everything we touch, we SHIFT_ And everything we SHIFT_ we try to make better and uniquely Nissan.

Visit our websites at:
www.nissan.co.uk
www.nissan-lcv.co.uk



SHIFT_business

Dealer stamp:

We take all our environmental responsibilities very seriously - innovation comes today with a deep respect for the environment. Our engines are now much more inobtrusive and their emissions have been considerably reduced. All our vehicles are designed with recycling in mind and are on target to reach 95% recyclability. This brochure is for general guidance only and its content do not in any way constitute an offer or representation from Nissan. Every effort has been made to ensure that the content of this publication is correct at the time of going to press. This brochure has been produced featuring prototypes vehicles exhibited at motor shows. In accordance with the company's policy of continuously improving its products, Nissan Europe reserves the right to change at any time the specifications and the vehicles described and shown in this publication. Nissan dealers will be informed of any such modifications as quickly as possible. Please check with your Nissan dealer to receive the most up-to-date information. Because of the limitations of the printing processes used, the colours shown in this brochure may differ slightly from the actual colours of the paint and interior trim materials used. All rights reserved. Reproduction in whole or part of this brochure without the written consent of Nissan Europe is forbidden. Benefits and services are provided by RAC Motoring Services and/or RAC Insurance Limited. RAC Motoring Services (Company No. 01424399, Head Office: 8 Surrey Street, Norwich, NR1 3NG) in respect of insurance mediation activities only and RAC Insurance Limited (Company No. 2355834, Head Office: 8 Surrey Street, Norwich, NR1 3NG) are authorised and regulated by the Financial Services Authority within the jurisdiction of the Financial Ombudsman Service and the Financial Services Compensation Scheme. Calls may be monitored and/or recorded.

This brochure is made from chlorinefree paper. Part number 99999-53100.
 Printed in June 2008.

NISSAN NEW CABSTAR
 TECHNICAL SPECIFICATIONS





GRADES

Whatever your requirement there is a New Cabstar to suit your business. Available in three wheelbases and with a choice of three-seat single cab or six-seat double cab, New Cabstar can be specified as a dropside, tipper or as a chassis cab ready for conversion. Each model is equipped with a refined Common Rail diesel engine, with either 5 or 6 speed gear box, which can cope with the most demanding payload.

Mandatory speed limiter on 4.5T models
 * Standard on 4.5T at no cost
 # When vehicle equipped with optional AC

NB: 4.5T GVW conversions are by special arrangement

BASIC

SWB 3.4T GVW
 2.5DCI 110PS 5 SPEED

SINGLE TILT CAB
 SINGLE REAR WHEELS

SAFETY & SECURITY

- Driver airbag
- Keyless entry
- Alarm
- Immobiliser
- Front bumper with shock absorber
- Lockable tilting cabin system
- Reinforced cabin structure
- Seatbelts with pretensioners

COMFORT AND CONVENIENCE

- Radio CD player
- Power windows
- Numerous storage areas including:
 - A4 storage
 - chilled cup holders and glove box#
 - documents glove box
 - overhead storage
 - foldaway centre clipboard tray (in the back of middle seat)
 - tilt cabin for easy servicing

OPTIONS

- Metallic Paint
- Digital Tachograph
- Front Air Conditioning

3.4 & 3.5T BODY OPTIONS

- Chassis
- Tipper
- Dropside

BASIC+

SWB 3.5T GVW
 2.5DCI 130PS 5 SPEED

SWB 4.5T GVW
 2.5DCI 130PS 6 SPEED
 3.0DCI 150PS 6 SPEED

SINGLE TILT CAB
 TWIN REAR WHEELS

ADDITIONAL SPEC TO BASIC GRADE

SAFETY & SECURITY

- ABS with EBD

OPTIONS

- Metallic Paint
- Digital Tachograph*
- Passenger airbag
- Front Air Conditioning
- Limited slip differential and reinforced suspension

3.5T BODY OPTIONS

- Chassis
- Tipper
- Dropside
- Box
- Freezer / Chiller Box

PRO

MWB 3.5T GVW
 2.5DCI 130PS 6 SPEED

MWB 4.5T GVW
 2.5DCI 130PS 6 SPEED
 3.0DCI 150PS 6 SPEED

SINGLE TILT CAB
 OR DOUBLE FIXED CAB
 TWIN REAR WHEELS

ADDITIONAL SPEC TO BASIC+ GRADE

COMFORT AND CONVENIENCE

- Easy Hill Start
- Power and heated mirrors
- Battery high capacity 110 Ah/12V

OPTIONS

- Metallic Paint
- Digital Tachograph*
- Passenger airbag
- Front Air Conditioning
- Limited slip differential and reinforced suspension

3.5T BODY OPTIONS

- Chassis
- Tipper
- Dropside
- Box van (Single cab only)
- Freezer / Chiller Box (Single cab only)

PRO+

LWB 3.5T GVW
 2.5DCI 130PS 6 SPEED
 3.0DCI 150PS 6 SPEED

LWB 4.5T GVW
 2.5DCI 130PS 6 SPEED
 3.0DCI 150PS 6 SPEED

SINGLE TILT CAB
 OR DOUBLE FIXED CAB
 TWIN REAR WHEELS

ADDITIONAL SPEC TO PRO GRADE

COMFORT AND CONVENIENCE

- Rear heater (Double cab versions)

OPTIONS

- Metallic Paint
- Digital Tachograph*
- Passenger airbag
- Front Air Conditioning

3.5T BODY OPTIONS

- Chassis
- Tipper (Double cab only)
- Dropside
- Box van (Single cab only)
- Freezer / Chiller Box (Single cab only)

NEW CABSTAR TECHNICAL DATA SHEET

| CAB | | Single Cab | Single Cab | Single Cab | Double | Single Cab | Double | Single Cab | Double |
|---|------------|--|---------------|------------------|--------------------------------|------------------|--------------------------------|-------------------|--------|
| ENGINE | | YD25DDTi (Lo) | YD25DDTi (Mi) | | | YD25DDTi (Mi) | | ZD30 Kai (Hi) | |
| TRANSMISSION | | M5-35A (5 sp) | M5-35A (5 sp) | 6S380 (6 sp) | | 6S380 (6 sp) | | 6S380 (6 sp) | |
| GVW | | 3.4 | | | 3.5 | | | | |
| REAR WHEELS | | SINGLE | | | TWIN | | | | |
| WHEELBASE | | SWB | SWB | MWB | MWB | LWB | LWB | LWB | LWB |
| ENGINE PERFORMANCE (according to EC 80/1269 directive) | | | | | | | | | |
| Maximum engine power | kW(hp)/rpm | 81 (110) @ 3.600 | | 96 (130) @ 3.600 | | 96 (130) @ 3.600 | | 110 (150) @ 3.400 | |
| Maximum engine torque | Nm/rpm | 250 @ 1.600 | | 270 @ 1.800 | | 270 @ 1.800 | | 350 @ 1.600 | |
| Emission class | | Euro4 (70/220/EEC amended by 2003/76/EC) | | | | | | | |
| ENGINE DESCRIPTION | | | | | | | | | |
| No. of cylinders, configuration | | 4, in line | | | 4, in line | | 4, in line | | |
| Valves per cylinder | | 4, DOHC | | | 4, DOHC | | 4, DOHC | | |
| Air intake system | | Turbo intercooler | | | Turbo intercooler | | Turbo intercooler | | |
| Control system | | ECCS | | | ECCS | | ECCS | | |
| Engine displacement | cc | 2488 | | | 2488 | | 2953 | | |
| Bore x Stroke | mm | 89 x 100 | | | 89 x 100 | | 96 x 102 | | |
| Compression ratio | | 16.5 :1 | | | 16.5 :1 | | 16.9 : 1 | | |
| Fuel type | | Diesel | | | Diesel | | Diesel | | |
| Fuel supply | | Direct Injection + Common Rail | | | Direct Injection + Common Rail | | Direct Injection + Common Rail | | |
| Emission control system | | EGR + Catalyst | | | EGR + Catalyst | | EGR + Catalyst | | |
| Electrical system | V | 12 | | | 12 | | 12 | | |
| Starter | Kw | 2.2 | | | 2.2 | | 2.5 (option 2.8) | | |
| Alternator | Amps | 130 | | | 130 | | 135 | | |
| TRANSMISSION SPECIFICATION | | | | | | | | | |
| Clutch type | | Dry, single plate with Hydraulic control | | | | | | | |
| Transmission type | | 5 speed M/T | 5 speed M/T | 6 speed M/T | | 6 speed M/T | | 6 speed M/T | |
| Gear ratio | 1st | 4.660 | 4.660 | 5.357 | | 5.357 | | 5.357 | |
| | 2nd | 2.930 | 2.930 | 3.154 | | 3.154 | | 3.154 | |
| | 3rd | 1.380 | 1.380 | 2.041 | | 2.041 | | 2.041 | |
| | 4th | 1.000 | 1.000 | 1.365 | | 1.365 | | 1.365 | |
| | 5th | 0.830 | 0.830 | 1.000 | | 1.000 | | 1.000 | |
| | 6th | N/A | N/A | 0.790 | | 0.790 | | 0.790 | |
| | Rev | 4.094 | 4.094 | 4.830 | | 4.830 | | 4.830 | |
| Final Drive type | | Single reduction of hypoid type | | | | | | | |
| Final Drive Ratio | | 4.111 | 4.111 | 4.111 | | 4.111 | | 4.375 | |

| Single Cab | Double | Single Cab | Double |
|--|--------|--------------------------------|--------|
| YD25DDTi (Mi) | | ZD30 Kai (Hi) | |
| 6S380 (6sp) | | | |
| 4.5 | | | |
| TWIN | | | |
| SWB | MWB | LWB | LWB |
| 96 (130) @ 3.600 | | 110 (150) @ 3.400 | |
| 270 @ 1.800 | | 350 @ 1.600 | |
| Euro4 (70/220/EEC amended by 2003/76/EC) | | | |
| 4, in line | | 4, in line | |
| 4, DOHC | | 4, DOHC | |
| Turbo intercooler | | Turbo intercooler | |
| ECCS | | ECCS | |
| 2488 | | 2953 | |
| 89 x 100 | | 96 x 102 | |
| 16,5 : 1 | | 16,9 : 1 | |
| Diesel | | Diesel | |
| Direct Injection + Common Rail | | Direct Injection + Common Rail | |
| EGR + Catalyst | | EGR + Catalyst | |
| 12 | | 12 | |
| 2.2 | | 2,5 (option 2,8) | |
| 130 | | 135 | |
| Dry, single plate with Hydraulic control | | | |
| 6 speed M/T | | | |
| 5.357 | | | |
| 3.154 | | | |
| 2.041 | | | |
| 1.365 | | | |
| 1.000 | | | |
| 0.790 | | | |
| 4.830 | | | |
| Single reduction of hypoid type | | | |
| 4.111 | | 4.375 | |

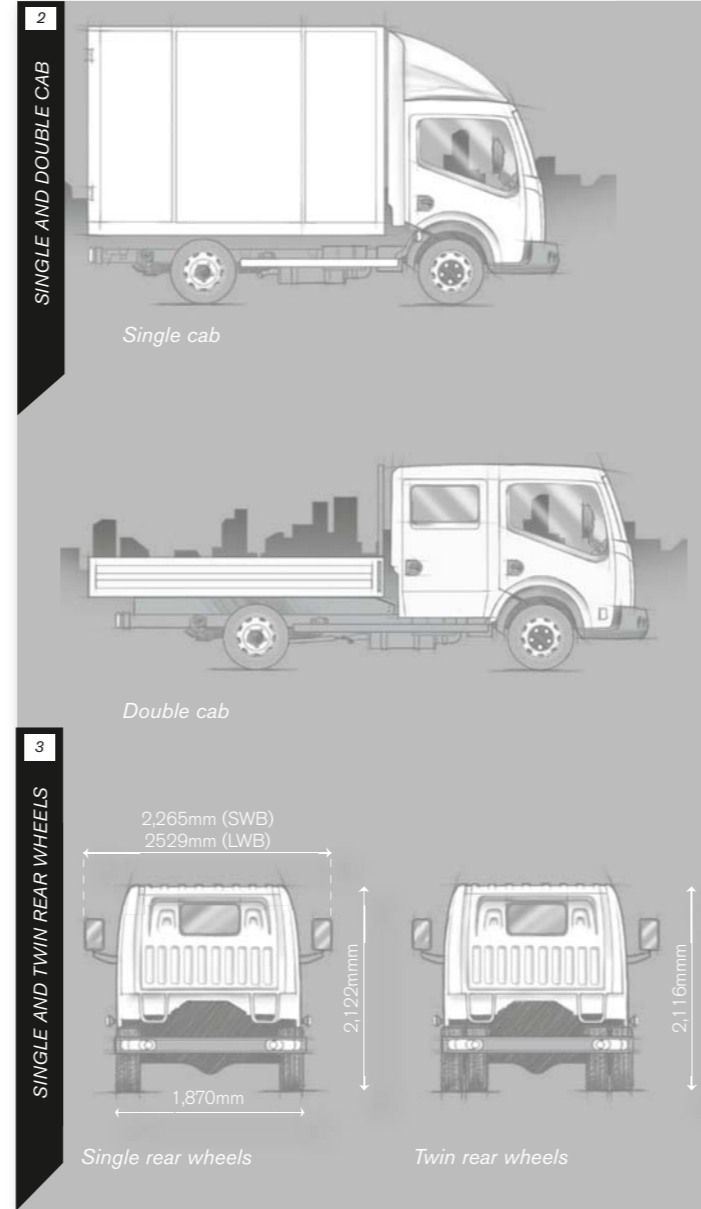
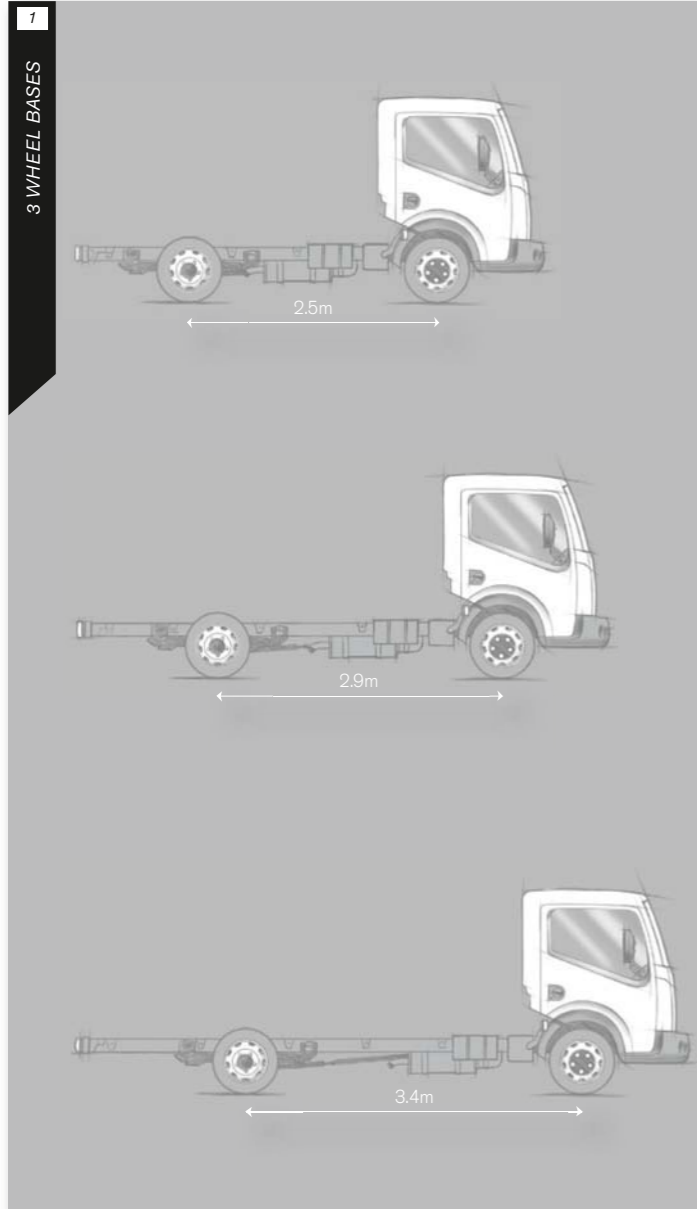
NEW CABSTAR TECHNICAL DATA SHEET

| CAB | | Single Cab | Single Cab | Single Cab | Double | Single Cab | Double | Single Cab | Double |
|---|---------|--|---------------|--------------|----------------|---------------|--------|---------------|--------|
| ENGINE | | YD25DDTi (Lo) | YD25DDTi (Mi) | | | YD25DDTi (Mi) | | ZD30 Kai (Hi) | |
| TRANSMISSION | | M5-35A (5 sp) | M5-35A (5 sp) | 6S380 (6 sp) | | 6S380 (6 sp) | | 6S380 (6 sp) | |
| GVW | | 3.4 | | | 3.5 | | | | |
| REAR WHEELS | | SINGLE | | | TWIN | | | | |
| WHEELBASE | | SWB | SWB | MWB | MWB | LWB | LWB | LWB | LWB |
| CHASSIS | | | | | | | | | |
| Frame type | | C Section steel longitudinal side members and riveted cross members | | | | | | | |
| Frame width | mm | 752 | | | | | | | |
| Section | mm | 128 x 52 x 4 | | | | | | | |
| Front Suspension | | Independent, Double Wishbone with transversal springs, with shock absorbers and stabilizer bar | | | | | | | |
| Rear Suspension | | Rigid axle, Parabolic leaf spring with shock absorbers and stabilizer bar | | | | | | | |
| Steering System | | Rack & Pinion, Power Assisted | | | | | | | |
| Turning circle, wall to wall | m | 10.58 | 10.56 | 11.84 | 11.92 | 13.46 | 13.54 | 13.46 | 13.54 |
| Turning circle, curb to curb | m | 9.62 | 9.58 | 10.86 | 10.94 | 12.44 | 12.54 | 12.44 | 12.54 |
| Brakes System | | Dual hydraulic circuit with vacuum servo assistance (ABS option) | | | | | | | |
| Front type | | Vented Disc, PF 2 x 48, Øef= 231 | | | | | | | |
| Rear type | | Solid Disc, PFC 1 x 46 Øef= 238 | | | | | | | |
| Wheels size | Front | 5½ J 15, single | | | 5 J 15, single | | | | |
| | Rear | 5½ J 15, single | | | 5 J 15, twin | | | | |
| Wheels bolts | | 5 x M16 | | | 5 x M16 | | | | |
| Tyre size | | 205/70 R 15 | | | 195/70 R 15 | | | | |
| FUEL TANK | | | | | | | | | |
| Fuel Tank Capacity | ltrs | 90, Right side | | | | | | | |
| PERFORMANCE (at GVW and Std final drive) | | | | | | | | | |
| Maximum speed (0% grade) [N2&N3 speed limit at 90 Km/h] | km/h | 125 | 133 | 133 | | 137 | | 137 | |
| | MPH | 78 | 83 | 83 | | 85 | | 85 | |
| rpm engine at 90 Km/h | | 2518 | 2575 | 2454 | | 2454 | | 2612 | |
| Max ascending grade | % | 43 | 47 | 57 | | 96 | | 96 | |
| Max starting ascending grade | % | 34 | 48 | 77 | | 77 | | 77 | |
| DOOR & SEATING CAPACITY | | | | | | | | | |
| Number of seats | 1st row | 3 | | | | | | | |
| | 2nd row | N/A | N/A | N/A | 3 | 3 | N/A | 3 | N/A |

| Single Cab | | | Double | | | Single Cab | | | Double | | | |
|--|-------|-------|---------------|-------|-------|---------------|-------|-------|---------------|---|-------|-------|
| YD25DDTi (Mi) | | | ZD30 Kai (Hi) | | | YD25DDTi (Mi) | | | ZD30 Kai (Hi) | | | |
| 6S380 (6sp) | | | | | | 6S380 (6sp) | | | | | | |
| 4.5 | | | | | | 4.5 | | | | | | |
| TWIN | | | | | | TWIN | | | | | | |
| SWB | MWB | LWB | MWB | LWB | SWB | MWB | LWB | MWB | LWB | SWB | MWB | LWB |
| CHASSIS | | | | | | | | | | | | |
| C Section steel longitudinal side members and riveted cross members | | | | | | | | | | | | |
| 752 | | | | | | | | | | | | |
| 128 x 52 x 4 | | | | | | | | | | | | |
| Independent, Double Wishbone with transversal springs, with shock absorbers and stabilizer bar | | | | | | | | | | | | |
| Rigid axle, Parabolic leaf spring with shock absorbers and stabilizer bar | | | | | | | | | | | | |
| Rack & Pinion, Power Assisted | | | | | | | | | | | | |
| 10.58 | 11.87 | 13.48 | 11.90 | 13.51 | 10.58 | 11.87 | 13.48 | 11.90 | 13.51 | 9.58 | 10.86 | 12.46 |
| 9.58 | 10.86 | 12.46 | 10.89 | 12.49 | 9.58 | 10.86 | 12.46 | 10.89 | 12.49 | Dual Hyd circuit with vacuum servo assist, with ABS | | |
| Vented Disc, PF 2 x 52, Øef= 234,6 | | | | | | | | | | | | |
| Vented Disc, PF 2 x 44, Øef= 241 | | | | | | | | | | | | |
| 5½ J 16, single | | | | | | | | | | | | |
| 5½ J 16, twin | | | | | | | | | | | | |
| 6 x M18 | | | | | | | | | | | | |
| 185/75 R 16 | | | | | | | | | | | | |
| FUEL TANK | | | | | | | | | | | | |
| 90, Right side | | | | | | | | | | | | |
| PERFORMANCE (at GVW and Std final drive) | | | | | | | | | | | | |
| 90 | | | | | | 90 | | | | | | |
| 56 | | | | | | 56 | | | | | | |
| 2348 | | | | | | 2498 | | | | | | |
| 39 | | | | | | 59 | | | | | | |
| 31 | | | | | | 47 | | | | | | |
| DOOR & SEATING CAPACITY | | | | | | | | | | | | |
| 3 | | | | | | | | | | | | |
| N/A | | | 3 | | | N/A | | | 3 | | | |

NEW CABSTAR CHASSIS VARIANTS

Available in 3.4T, 3.5T and 4.5T GVW variants, with 2.5m, 2.9m and 3.4m wheelbases, single or twin rear wheels and single or double cabs, the New Cabstar offers a truly comprehensive choice to suit your application.



Chassis

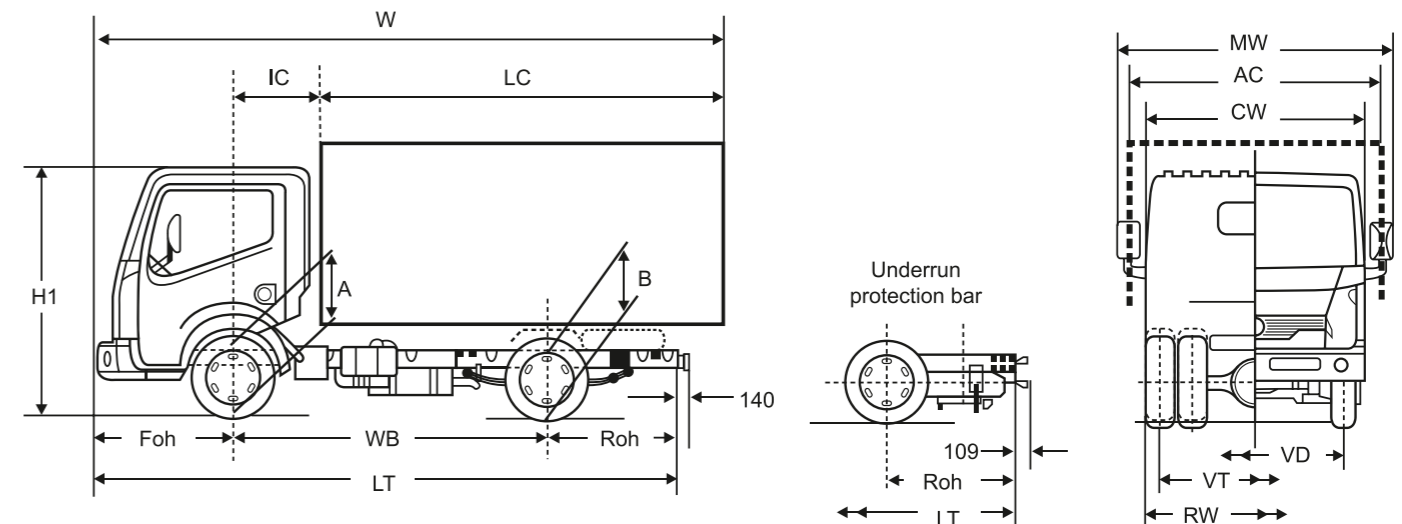
| | | Single Cab | | | | Double Cab | | |
|--------|-------------------------|------------|-------|-------|-------|------------|-------|-------|
| | | SWB | MWB | LWB | LWB | MWB | LWB | LWB |
| | | 34.11 | 35.13 | 35.13 | 35.13 | 35.15 | 35.13 | 35.13 |
| WB | Wheelbase | 2,500 | 2,900 | 3,400 | 3,400 | 2,900 | 3,400 | 3,400 |
| AC max | Max body width | 2,200 | 2,200 | 2,200 | 2,200 | 2,200 | 2,200 | 2,200 |
| MW | Cabin width inc mirrors | 2,265 | 2,529 | 2,529 | 2,529 | 2,529 | 2,529 | 2,529 |
| CW | Cabin width exc mirrors | 1,870 | 1,870 | 1,870 | 1,870 | 1,870 | 1,870 | 1,870 |
| Foh | Front overhang | 1,062 | 1,062 | 1,062 | 1,062 | 1,062 | 1,062 | 1,062 |
| Roh | Rear overhang | 983 | 1,283 | 1,583 | 1,583 | 1,283 | 1,583 | 1,583 |
| LT | Overall length | 4,545 | 5,245 | 6,045 | 6,045 | 5,245 | 6,045 | 6,045 |
| IC | Front axle to rear body | 650 | 650 | 650 | 650 | 1,650 | 1,650 | 1,650 |
| LC min | Body length min | 2,651 | 3,290 | 4,115 | 4,227 | 2,051 | 3,129 | 3,310 |
| LC max | Body length max | 3,358 | 3,476 | 4,136 | 4,961 | 4,961 | 3,136 | 3,961 |

| | | | | | | | | | |
|----|-------------------|-------|-------|-------|-------|-------|-------|-------|-------|
| RW | Rear axle width | 1,735 | 1,818 | 1,818 | 1,818 | 1,816 | 1,818 | 1,818 | 1,816 |
| VD | Front track | 1,586 | 1,573 | 1,573 | 1,573 | 1,573 | 1,573 | 1,573 | 1,573 |
| VT | Rear track | 1,518 | 1,396 | 1,396 | 1,396 | 1,394 | 1,396 | 1,396 | 1,394 |
| H1 | Height ((unladen) | 2,122 | 2,116 | 2,116 | 2,116 | 2,116 | 2,116 | 2,116 | 2,116 |
| W | Max length | 5,070 | 5,188 | 5,848 | 6,673 | 6,673 | 5,808 | 6,633 | 6,633 |

All figures mm

| | | | | | | | | |
|----------------------|-------|-------|-------|-------|-------|-------|-------|-------|
| Gross Vehicle Weight | 3,400 | 3,500 | 3,500 | 3,500 | 3,500 | 3,500 | 3,500 | 3,500 |
| Kerb Weight | 1,623 | 1,648 | 1,677 | 1,697 | 1,820 | 1,852 | 1,872 | 1,960 |
| Payload | 1,777 | 1,852 | 1,823 | 1,803 | 1,680 | 1,648 | 1,628 | 1,540 |
| Gross Train Weight | 5,400 | 7,000 | 7,000 | 7,000 | 7,000 | 7,000 | 7,000 | 7,000 |

All figures kg



Kerb weight: Standard vehicle, without driver, but including fuel, spare wheel and tool kit

Maximum and minimum dimensions are given as a guide, applicable to standard bodies with uniformly distributed loads without cranes lifts etc. Consult the bodybuilder standards for full details.

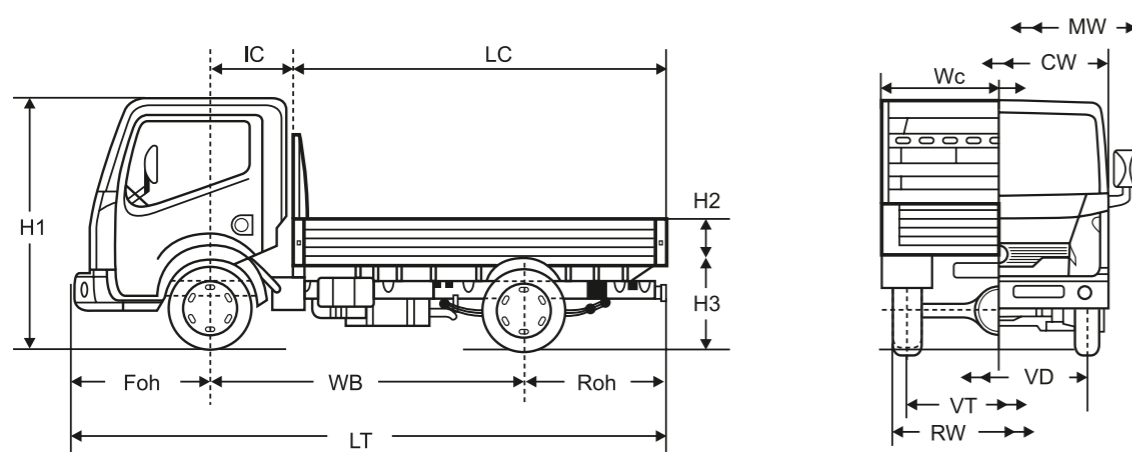
Dropside

| | | Single Cab | | | | Double Cab | | |
|-----|--------------------------|------------|-------|-------|-------|------------|-------|-------|
| | | SWB | | MWB | LWB | MWB | | LWB |
| | | 34.11 | 35.13 | 35.13 | 35.13 | 35.15 | 35.13 | 35.13 |
| WB | Wheelbase | 2,500 | 2,900 | 3,400 | 3,400 | 2,900 | 3,400 | 3,400 |
| Wc | Body width | 1,900 | 1,900 | 1,900 | 1,900 | 1,900 | 1,900 | 1,900 |
| MW | Cabin width inc mirrors | 2,265 | 2,529 | 2,529 | 2,529 | 2,529 | 2,529 | 2,529 |
| CW | Cabin width exc mirrors | 1,870 | 1,870 | 1,870 | 1,870 | 1,870 | 1,870 | 1,870 |
| Foh | Front overhang | 1,062 | 1,062 | 1,062 | 1,062 | 1,062 | 1,062 | 1,062 |
| Roh | Rear overhang | 1,347 | 1,507 | 2,010 | 2,010 | 1,710 | 2,010 | 2,010 |
| LT | Overall length | 4,909 | 5,469 | 6,472 | 6,472 | 5,672 | 6,472 | 6,472 |
| IC | Front axle to rear body | 687 | 687 | 687 | 687 | 1,681 | 1,610 | 1,610 |
| LC | Body length | 3,160 | 3,720 | 4,600 | 4,600 | 3,000 | 3,720 | 3,720 |
| H2 | Body height | 400 | 400 | 400 | 400 | 400 | 400 | 400 |
| H3 | Load bed to floor height | 917 | 917 | 900 | 900 | 901 | 900 | 900 |
| RW | Rear axle width | 1,816 | 1,818 | 1,818 | 1,816 | 1,818 | 1,818 | 1,818 |
| VD | Front track | 1,586 | 1,573 | 1,573 | 1,573 | 1,573 | 1,573 | 1,573 |
| VT | Rear track | 1,518 | 1,396 | 1,396 | 1,394 | 1,396 | 1,396 | 1,396 |
| H1 | Height (unladen) | 2,116 | 2,116 | 2,116 | 2,116 | 2,116 | 2,116 | 2,116 |

All figures mm

| | | | | | | | | |
|----------------------|-------|-------|-------|-------|-------|-------|-------|-------|
| Gross Vehicle Weight | 3,400 | 3,500 | 3,500 | 3,500 | 3,500 | 3,500 | 3,500 | 3,500 |
| Kerb Weight | 1,879 | 1,921 | 1,978 | 2,120 | 2,243 | 2,095 | 2,173 | 2,261 |
| Payload | 1,521 | 1,579 | 1,522 | 1,380 | 1,257 | 1,405 | 1,327 | 1,239 |
| Gross Train weight | 5,400 | 7,000 | 7,000 | 7,000 | 7,000 | 7,000 | 7,000 | 7,000 |

All figures kg



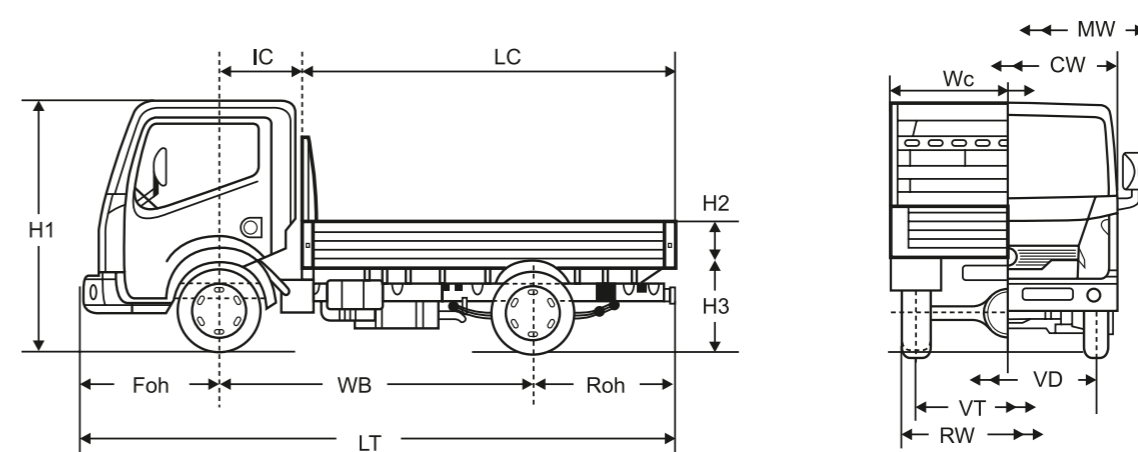
Tipper

| | | Single Cab | | | Double Cab | | |
|-----|--------------------------|------------|-------|-------|------------|-------|-------|
| | | SWB | | MWB | MWB | | LWB |
| | | 34.11 | 35.13 | 35.13 | 35.13 | 35.13 | 35.15 |
| WB | Wheelbase | 2,500 | 2,500 | 2,900 | 2,900 | 3,400 | 3,400 |
| Wc | Body width | 1,900 | 1,900 | 1,900 | 1,900 | 1,900 | 1,900 |
| MW | Cabin width inc mirrors | 2,265 | 2,265 | 2,529 | 2,529 | 2,529 | 2,529 |
| CW | Cabin width exc mirrors | 1,870 | 1,870 | 1,870 | 1,870 | 1,870 | 1,870 |
| Foh | Front overhang | 1,062 | 1,062 | 1,062 | 1,062 | 1,062 | 1,062 |
| Roh | Rear overhang | 1,345 | 1,400 | 1,300 | 1,400 | 1,400 | 1,400 |
| LT | Overall length | 4,900 | 4,962 | 5,262 | 5,362 | 5,862 | 5,862 |
| IC | Front axle to rear body | 630 | 700 | 700 | 1,610 | 1,610 | 1,610 |
| LC | Body length | 3,180 | 3,200 | 3,500 | 2,650 | 3,200 | 3,200 |
| H2 | Body height | 400 | 400 | 400 | 400 | 400 | 400 |
| H3 | Load bed to floor height | 920 | 950 | 950 | 950 | 950 | 950 |
| RW | Rear axle width | 1,735 | 1,818 | 1,818 | 1,818 | 1,818 | 1,816 |
| VD | Front track | 1,586 | 1,573 | 1,573 | 1,573 | 1,573 | 1,573 |
| VT | Rear track | 1,518 | 1,396 | 1,396 | 1,396 | 1,396 | 1,394 |
| H1 | Height (unladen) | 2,122 | 2,116 | 2,116 | 2,116 | 2,116 | 2,116 |

All figures mm

| | | | | | | |
|----------------------|-------|-------|-------|-------|-------|-------|
| Gross Vehicle Weight | 3,400 | 3,500 | 3,500 | 3,500 | 3,500 | 3,500 |
| Kerb Weight | 2,140 | 2,200 | 2,240 | 2,382 | 2,412 | 2,510 |
| Payload | 1,260 | 1,300 | 1,260 | 1,118 | 1,088 | 968 |
| Gross Train weight | 5,400 | 7,000 | 7,000 | 7,000 | 7,000 | 7,000 |

All figures kg



Box Van

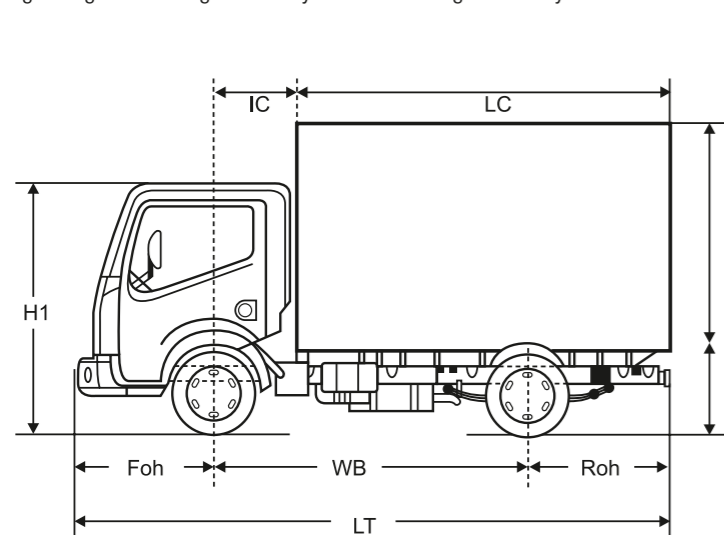
| | | Single Cab | | |
|-----|--------------------------|------------|-------|-------|
| | | SWB | MWB | LWB |
| | | 35.13 | 35.13 | 35.15 |
| WB | Wheelbase | 2,500 | 2,900 | 3,400 |
| Wc | Body width | 2,150 | 2,150 | 2,150 |
| MW | Cabin width inc mirrors | 2,265 | 2,529 | 2,529 |
| CW | Cabin width exc mirrors | 1,870 | 1,870 | 1,870 |
| Foh | Front overhang | 1,062 | 1,062 | 1,062 |
| Roh | Rear overhang | 1,500 | 1,600 | 1,750 |
| LT | Overall length | 5,062 | 5,262 | 6,212 |
| IC | Front axle to rear body | 700 | 700 | 700 |
| LC | Body length | 3,300 | 3,800 | 4,450 |
| H2 | Body height | 2,150 | 2,150 | 2,150 |
| H3 | Load bed to floor height | 880 | 880 | 880 |
| RW | Rear axle width | 1,818 | 1,818 | 1,816 |
| VD | Front track | 1,573 | 1,573 | 1,573 |
| VT | Rear track | 1,396 | 1,396 | 1,394 |
| H1 | Max Height | 2,930 | 2,930 | 2,930 |

All figures mm

| | | | |
|-----------------|-------|-------|-------|
| Internal Length | 3,275 | 3,725 | 4,375 |
| Internal Width | 2,075 | 2,075 | 2,075 |
| Internal height | 2,100 | 2,100 | 2,100 |
| Load Volume Mcu | 14.3 | 16.2 | 19 |

| | | | |
|----------------------|-------|-------|-------|
| Gross Vehicle Weight | 3,500 | 3,500 | 3,500 |
| Kerb Weight | 2,078 | 2,122 | 2,340 |
| Payload | 1,422 | 1,378 | 1,160 |
| GrossTrain weight | 7,000 | 7,000 | 7,000 |

All figures kg 1 add 75kg for standby 2 subtract 75kg for standby



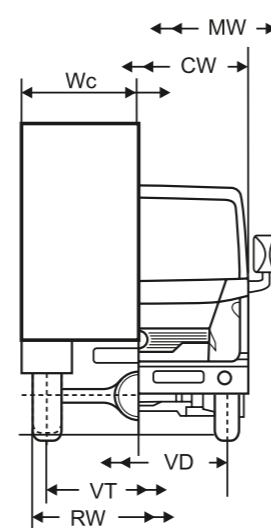
1 add 75kg for standby
2 subtract 75kg for standby

Freezer / chiller

| | | Single Cab | |
|-----|--------------------------|------------|-------|
| | | SWB | MWB |
| | | 35.13 | 35.13 |
| WB | Wheelbase | 2,500 | 2,900 |
| Wc | Body width | 2,200 | 2,200 |
| MW | Cabin width inc mirrors | 2,265 | 2,529 |
| CW | Cabin width exc mirrors | 1,870 | 1,870 |
| Foh | Front overhang | 1,062 | 1,062 |
| Roh | Rear overhang | 1,500 | 1,600 |
| LT | Overall length | 4,962 | 5,262 |
| IC | Front axle to rear body | 700 | 700 |
| LC | Body length | 3,300 | 3,800 |
| H2 | Body height | 2,200 | 2,200 |
| H3 | Load bed to floor height | 880 | 880 |
| RW | Rear axle width | 1,816 | 1,816 |
| VD | Front track | 1,573 | 1,573 |
| VT | Rear track | 1,396 | 1,396 |
| H1 | Height ((unladen) | 2,980 | 2,980 |

| | | |
|-----------------|-------|-------|
| Internal Length | 3,164 | 3,664 |
| Internal Width | 2,074 | 2,074 |
| Internal height | 2,032 | 2,032 |
| Load Volume Mcu | 13.9 | 15.4 |

| | | |
|-------|-------|-------|
| 3,500 | 3,500 | 3,500 |
| 2,264 | 2,376 | 2,376 |
| 1,236 | 1,124 | 1,124 |
| 7,000 | 7,000 | 7,000 |



Chassis 4.5T

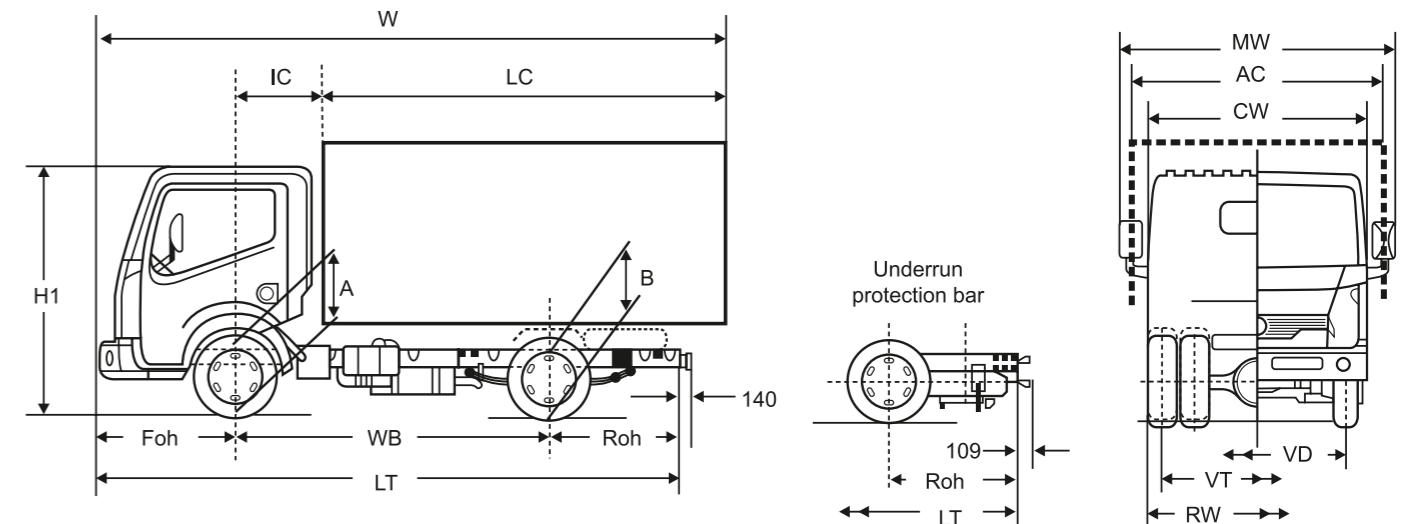
| | | Single Cab | | | | |
|--------|-------------------------|------------|-------|-------|-------|-------|
| | | SWB | MWB | MWB | LWB | LWB |
| | | 45.13 | 45.13 | 45.15 | 45.13 | 45.15 |
| WB | Wheelbase | 2,500 | 2,900 | 2,900 | 3,400 | 3,400 |
| AC max | Max body width | 2,200 | 2,200 | 2,200 | 2,200 | 2,200 |
| MW | Cabin width inc mirrors | 2,265 | 2,529 | 2,529 | 2,529 | 2,529 |
| CW | Cabin width exc mirrors | 1,870 | 1,870 | 1,870 | 1,870 | 1,870 |
| Foh | Front overhang | 1,062 | 1,062 | 1,062 | 1,062 | 1,062 |
| Roh | Rear overhang | 1,183 | 1,483 | 1,483 | 1,883 | 1,883 |
| LT | Overall length | 4,745 | 5,445 | 5,445 | 6,345 | 6,345 |
| IC | Front axle to rear body | 650 | 650 | 650 | 650 | 650 |
| Lc min | Body length min | 3,008 | 3,730 | 3,730 | 4,635 | 4,635 |
| Lc max | Body length max | 3,475 | 4,136 | 4,136 | 4,961 | 4,961 |

| | | | | | | |
|-------|--------------------|-------|-------|-------|-------|-------|
| RW | Rear axle width | 1,902 | 1,902 | 1,914 | 1,902 | 1,914 |
| VD | Front track | 1,569 | 1,569 | 1,569 | 1,569 | 1,569 |
| VT | Rear track | 1,480 | 1,480 | 1,492 | 1,480 | 1,492 |
| H1 | Height ((unladen) | 2,135 | 2,135 | 2,135 | 2,135 | 2,135 |
| Y min | Gravity centre min | 5,188 | 5,848 | 5,848 | 6,673 | 6,673 |
| Y max | Gravity centre max | 2,388 | 2,718 | 2,718 | 3,131 | 3,131 |
| W | Max length | 5,188 | 5,848 | 5,848 | 6,673 | 6,673 |

All figures mm

| | | | | | |
|----------------------|------|------|------|------|------|
| Gross Vehicle Weight | 4500 | 4500 | 4500 | 4500 | 4500 |
| Kerb Weight | 1734 | 1754 | 1842 | 1774 | 1862 |
| Payload | 2766 | 2746 | 2658 | 2726 | 2638 |
| GrossTrain weight | 8000 | 8000 | 8000 | 8000 | 8000 |

All figures kg



Kerb weight: Standard vehicle, without driver, but including fuel, spare wheel and tool kit. Maximum and minimum dimensions are given as a guide, applicable to standard bodies with uniformly distributed loads without cranes lifts etc. Consult the bodybuilder standards for full details.

