



Cadillac®

BLS CTS ESCALADE

BLS



THE LUXURY PERFORMANCE SEDAN AND WAGON

GENEROUS COMFORT

From its inception, the BLS was designed to provide long distance comfort in an agile mid-size car. That means going beyond ordinary measures of space to ensure rear as well as front passengers have ample room to breathe. While headroom and legroom are among the best in class, the BLS also takes into account more considerate factors such as shoulders and hips – offering more than 1,400 mm of shoulder room and 1,300 mm of hiproom for each of up to four passengers. Combine that with elegant touches such as a soft leather steering wheel and flexible centre rear armrest, and you'll enjoy Cadillac comfort in every sense.



SOPHISTICATED INTERIOR

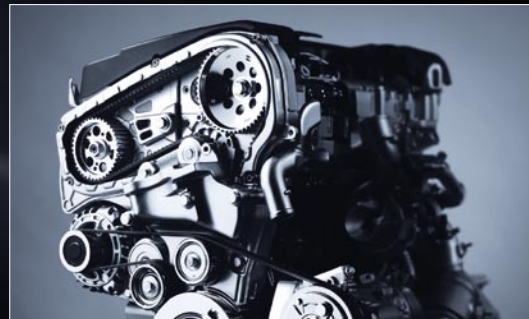
The true measure of luxury is how it moves you, and the interior of the BLS is designed to inspire. From the moment you slip inside, you are surrounded by the warm touch of woven cloth or leather, offset with Piano Black or Red Walnut highlights. Dual-zone air conditioning gives passengers the freedom to choose their own interior climate. Supportive 8-way power seats are available to let you store the ideal positions of different drivers and front passengers. An advanced steering wheel allows the driver to direct the in-car entertainment, on-board computer, optional DVD satellite navigation and more. Form and function have never worked in such perfect harmony. To deliver such a refined driving experience.





TURBOCHARGED POWER

Every BLS engine is turbocharged to provide rapid acceleration with smooth transfer of power. Leading the pack is our first common rail diesel, a 1.9 liters all-aluminium four-cylinder engine producing 110 kW/150 hp, or a two stage turbo diesel version that delivers a dynamic 132 kW/180 hp. In the petrol family, our 2.0 liters four-cylinder turbo comes in two variants, either a 129 kW/175 hp power plant, or a 154 kW/210 hp engine with 300 Nm of torque. For the ultimate in performance, we also offer a 2.8 liters V6 with a twin-scroll turbocharger that can pump out 188 kW/280 hp and rocket from 0 to 100 km/h in 6.2 seconds. Different engines offer a 5- or 6-speed gearbox, with an automatic transmission available on each. Explore the range and see which one moves you the most.





SEDAN

ENGINE AND TRANSMISSION	2.0T 175 HP	2.0T FLEXPOWER	2.0 T 210 HP	2.8 T V6 280 HP	1.9 D 150 HP	1.9 D 180 HP
Number of cylinders	4	4	4	6	4	4
Displacement (cm ³)	1998	1998	1998	2792	1910	1910
Bore x stroke (mm)	86x86	86x86	86x86	89x74.8	82x90.4	82x90.4
Number of valves	16	16	16	24	16	16
Camshaft location	DOHC	DOHC	DOHC	DOHC	DOHC	DOHC
Fuel type	Bleifrei (mind. 95 RON)	Bioeth./Bleifrei (mind. 95 RON)	Bleifrei (mind. 95 RON)	Bleifrei (mind. 95 RON)	Diesel	Diesel
Powered axles	FWD	FWD	AWD	AWD	FWD	FWD
Transmission	6-speed manual	6-speed manual	6-speed manual	6-speed manual	6-speed manual	6-speed manual
Transmission (option)	5-speed automatic	5-speed automatic	5-speed automatic	5-speed automatic	5-speed automatic	5-speed automatic
All AT with Driver Shift Control, sport mode and steering wheel control						

PERFORMANCE

Performance (kW/hp/min ⁻¹)	129/175/5500	147/200/5500	154/210/5300	206/280/5300	110/150/4000	132/180/4000
Max. torque (Nm/min ⁻¹)	265/2500 – 3500	300/2500 – 4000	300/2500 – 4000	400/1900 – 4500	320/2000 – 2750	400/1.850 – 2.750 for MT; 370/1.750 – 3.250 for AT
Top speed (km/h) – manual/auto.	220/220	220/220	235/230	250/250	210/210	225/225
Acceleration 0 – 100 km/h (s) – manual/auto.	8.5/9.7	8.5/9.7	8.3/9.5	6.2/7.3	9.5/11.0	8.5/8.9
Fuel consumption (l/100 km) ¹ – urban (manual/auto.)	11.5/12.9	11.5/12.9	11.9/14.9	15.9/18.4	6.9/9.7	6.9/9.6
– extra-urban (manual/auto.)	6.4/6.7	6.4/6.7 (running on petrol)	6.6/7.1	7.5/7.6	4.4/5.3	4.4/5.1
– combined (manual/auto.)	8.3/9.0	8.3/9.0 (running on petrol)	8.5/9.9	10.6/11.6	5.3/6.9	5.3/6.8
CO ₂ emission combined (g/km) – manual/auto.	197/216	197/216 (running on petrol)	205/238	254/276	139/183	139/179
Emissions Particulates (g/km)	–	–	–	–	0,002 (0,001)	0,000

MASSES

Curb mass (kg) ^{2, 3} – manual/auto.	1460/1485	1460/1485	1485/1510	1555/1580	1505/1530	1545/1570
Max. permissible mass (kg) – manual/auto.	2010/2030	2010/2030	2010/2040	2080/2110	2060/2080	2080/2110
Max. permissible mass of trailer (kg) – braked	1600	1600	1600	1600	1600	1600
Max. permissible mass of trailer (kg) – unbraked	750	750	750	750	750	750
Max. permissible mass of combination (kg) – braked – manual/auto.	3610/3630	3610/3630	3610/3640	3680/3710	3660/3680	3680/3710
Max. vertical load on coupling point (kg)	75	75	75	75	75	75
Max. permissible roof load (kg)	100	100	100	100	100	100
Max. payload (kg) ⁴ – manual/auto.	550/545	550/545	525/530	525/530	555/545	535/540

DIMENSIONS

Overall length (mm)	4680	4680	4680	4680	4680	4680
Overall width, excl./incl. mirrors (mm)	1802/2038	1802/2038	1802/2038	1802/2038	1802/2038	1802/2038
Overall height (mm)	1471	1471	1471	1471	1471	1471
Wheelbase (mm)	2675	2675	2675	2675	2675	2675
Axle track front/rear (mm)	1524/1506	1524/1506	1524/1506	1524/1506	1524/1506	1524/1506
Headroom front/rear (mm)	988/940	988/940	988/940	988/940	988/940	988/940
Legroom front/rear (mm)	1053/892	1053/892	1053/892	1053/892	1053/892	1053/892
Shoulderroom front/rear (mm)	1414/1402	1414/1402	1414/1402	1414/1402	1414/1402	1414/1402
Hiproom front/rear (mm)	1382/1398	1382/1398	1382/1398	1382/1398	1382/1398	1382/1398
Cargo volume (l)	425	425	425	425	425	425
Fuel tank volume (l)	58	58	58	58	58	58
Turning circle curb to curb (m)	11.9	11.9	11.9	11.9	11.9	11.9

WHEELS

Rim size (inch) (option)	16x6.5 (17x7.5)	16x6.5 (17x7.5)	17x7.5 (17x7.5)	17x7.5 (18x7.5)	16x6.5 (17x7.5, 18x7.5)	16x6.5 (17x7.5, 18x7.5)
Tyre size (option)	215/55R16 (225/45R17)	215/55R16 (225/45R17)	235/45R17 (235/45R17)	235/45R17 (225/45R18)	215/55R16 (235/45R17, 225/45R18)	215/55R16 (235/45R17, 225/45R18)

WAGON

ENGINE AND TRANSMISSION	2.0T 175 HP	2.0T FLEXPPOWER	2.0 T 210 HP	2.8 T V6 280 HP	1.9 D 150 HP	1.9 D 180 HP
Number of cylinders	4	4	4	6	4	4
Displacement (cm ³)	1998	1998	1998	2792	1910	1910
Bore x stroke (mm)	86x86	86x86	86x86	89x74.8	82x90.4	82x90.4
Number of valves	16	16	16	24	16	16
Camshaft location	DOHC	DOHC	DOHC	DOHC	DOHC	DOHC
Fuel type	Bleifrei (mind. 95 RON)	Bioeth./Bleifrei (mind. 95 RON)	Bleifrei (mind. 95 RON)	Bleifrei (mind. 95 RON)	Diesel	Diesel
Powered axles	FWD	FWD	AWD	AWD	FWD	FWD
Transmission	6-speed manual	6-speed manual	6-speed manual	6-speed manual	6-speed manual	6-speed manual
Transmission (option)	5-speed automatic	5-speed automatic	5-speed automatic	5-speed automatic	5-speed automatic	5-speed automatic
All AT with Driver Shift Control, sport mode and steering wheel control						

PERFORMANCE

Performance (kW/hp/min ⁻¹)	129/175/5500	147/200/5500	154/210/5300	206/280/5300	110/150/4000	132/180/4000
Max. torque (Nm/min ⁻¹)	265/2500 – 3500	300/2500 – 4000	300/2500 – 4000	400/1900 – 4500	320/2000 – 2750	400/1.850 – 2.750 for MT; 370/1.750 – 3.250 for AT
Top speed (km/h) – manual/auto.	215/210	215/210	230/225	250/245	200/195	220/215
Acceleration 0 – 100 km/h (s) – manual/auto.	8.8/10.0	8.8/10.0	8.5/9.7	6.5/7.5	10.2/11.2	8.7/9.2
Fuel consumption (l/100 km) ¹ – urban (manual/auto.)	11.5/13.3	11.5/13.3 (running on petrol)	11.9/15.1	16.5/18.6	7.0/9.9	7.0/9.7
– extra-urban (manual/auto.)	6.4/6.9	6.4/6.9 (running on petrol)	6.7/7.2	7.8/7.7	4.6/5.5	4.6/5.2
– combined (manual/auto.)	8.3/9.3	8.3/9.3 (running on petrol)	8.6/10.1	11.0/11.7	5.5/7.1	5.5/6.9
CO ₂ emission combined (g/km) – manual/auto.	197/222	197/222 (running on petrol)	207/242	263/279	144/188	144/182
Emissions Particulates (g/km)	–	–	–	–	0,002 (0,001)	0,000

MASSES

Curb mass (kg) ^{2, 3} – manual/auto.	1510/1535	1510/1535	1535/1560	1605/1630	1555/1575	1595/1620
Max. permissible mass (kg) – manual/auto.	2070/2100	2070/2100	2080/2100	2150/2170	2120/2150	2150/2170
Max. permissible mass of trailer (kg) – braked	1600	1600	1600	1600	1600	1600
Max. permissible mass of trailer (kg) – unbraked	750	750	750	750	750	750
Max. permissible mass of combination (kg) – braked – manual/auto.	3670/3700	3670/3700	3680/3700	3750/3770	3720/3750	3750/3770
Max. vertical load on coupling point (kg)	75	75	75	75	75	75
Max. permissible roof load (kg)	100	100	100	100	100	100
Max. payload (kg) ⁴ – manual/auto.	560/565	555/560	545/540	545/540	565/570	555/550

DIMENSIONS

Overall length (mm)	4716	4716	4716	4716	4716	4716
Overall width, excl./incl. mirrors (mm)	1802/2038	1802/2038	1802/2038	1802/2038	1802/2038	1802/2038
Overall height (mm)	1543	1543	1543	1543	1543	1543
Wheelbase (mm)	2675	2675	2675	2675	2675	2675
Axle track front/rear (mm)	1524/1506	1524/1506	1524/1506	1524/1506	1524/1506	1524/1506
Headroom front/rear (mm)	988/987	988/987	988/987	988/987	988/987	988/987
Legroom front/rear (mm)	1053/892	1053/892	1053/892	1053/892	1053/892	1053/892
Shoulderroom front/rear (mm)	1414/1402	1414/1402	1414/1402	1414/1402	1414/1402	1414/1402
Hiproom front/rear (mm)	1382/1398	1382/1398	1382/1398	1382/1398	1382/1398	1382/1398
Cargo volume (l)	419/1273	419/1273	419/1273	419/1273	419/1273	419/1273
Fuel tank volume (l)	58	58	58	58	58	58
Turning circle curb to curb (m)	11.9	11.9	11.9	11.9	11.9	11.9

WHEELS

Rim size (inch) (option)	16x6.5 (17x7.5)	16x6.5 (17x7.5)	17x7.5 (17x7.5)	17x7.5 (18x7.5)	16x6.5 (17x7.5, 18x7.5)	16x6.5 (17x7.5, 18x7.5)
Tyre size (option)	215/55R16 (225/45R17)	215/55R16 (225/45R17)	235/45R17 (235/45R17)	235/45R17 (225/45R18)	215/55R16 (235/45R17, 225/45R18)	215/55R16 (235/45R17, 225/45R18)

¹ In accordance with 1999/100/EC (petrol), 2004/3 (diesel). (Optional equipment, maintenance, driving behaviour, road and weather conditions may affect the official results.)² Minimum curb mass. Figures in accordance with EC Directive. Curb mass condition is without driver and including coolant, oils, fuel, spare wheel and tools.³ Based on the minimum mass in running order minus 75 kg.⁴ If curb mass increases, consequently payload will decrease in inverse proportion.

ENGINE, TRANSMISSION, CHASSIS	BUSINESS	ELEGANCE	SPORT	SPORT LUXURY
2.0 T 175 hp 6-speed manual transmission	•	•	•	–
2.0 T 175 hp 5-speed automatic with Driver Shift Control and Paddle Shift and Sport Mode	○	○	○	–
2.0 T Flexpower 200 hp 6-speed manual transmission	•	•	•	–
2.0 T Flexpower 200 hp 5-speed automatic with Driver Shift Control and Paddle Shift and Sport Mode	○	○	○	–
2.0 T 210 hp 6-speed manual transmission	–	•	•	–
2.0 T 210 hp 5-speed automatic with Driver Shift Control and Paddle Shift and Sport Mode	–	○	○	–
2.8 T V6 280 hp 6-speed manual transmission	–	•	•	•
2.8 T V6 280 hp 6-speed automatic with Driver Shift Control and Paddle Shift and Sport Mode	–	○	○	○
1.9 D 150 hp 6-speed manual transmission	•	•	•	–
1.9 D 150 hp 6-speed automatic with Driver Shift Control and Paddle Shift and Sport Mode	○	○	○	–
1.9 D 180 hp 6-speed manual transmission	•	•	•	•
1.9 D 180 hp 6-speed automatic with Driver Shift Control and Paddle Shift and Sport Mode	○	○	○	○
Front-wheel drive	•	•	•	•
Suspension front, McPherson struts, gas shock absorbers, anti-roll bar, hydro-formed subframe	•	•	•	•
Suspension rear, independent, 4-link, coil springs, gas shock absorbers, anti-roll bar, subframe	•	•	•	•
Power steering	•	•	•	•
SAFETY AND SECURITY				
Airbags (frontal; side-impact for driver and front passenger; Head curtain for front and outboard rear passengers)	•	•	•	•
Child security rear door locks	•	•	•	•
Active front seat head restraints to help prevent whiplash	•	•	•	•
Rear centre headrest	○	•	•	•
Anti-lock Braking System (ABS)	•	•	•	•
Traction control	•	•	•	•
Theft-deterrent alarm system, includes dead-lock function on all side doors	○	○	○	○
StabiliTrak™, vehicle stability enhancement system	•	•	•	•
Tyre Pressure Monitoring system	–	–	•	•
EXTERIOR				
Outside rear-view mirrors, power adjusting, heated	•	•	•	•
Tyres, 215/55 R 16	•	–	–	–
Tyres, 235/45 R 17	○	•	–	–
Wheels, 6.5 x 16 aluminium, 7 spoke	•	–	–	–
Wheels, 7.5 x 17 aluminium, 7 spoke	○	○	–	–
Wheels, 7.5 x 17 aluminium, 7 spoke	–	•	–	–
Roof rail ²	•	•	•	•
Metallic paint	○	○	○	○
INTERIOR				
Cupholders, 2 fixed in front console	•	–	–	–
Cupholders, 4 total, 2 front and 2 additional retractable in rear seat	–	•	•	•
Leather-wrapped steering wheel	•	•	•	•
Piano Black interior	•	–	–	–
Red Walnut interior	–	•	–	•
Aluminium interior	•	•	•	•
Cargo cover ²	•	•	•	•
Cargo net (vertical and foldable) load protection for occupants ²	•	•	•	•
Fold up grocery bag holder with hooks incl. floor load net ²	–	–	•	–

SEATS	BUSINESS	ELEGANCE	SPORT	SPORT LUXURY
Adjustable centre armrest front	•	•	•	•
Centre armrest rear	•	•	•	•
8-way power adjustable driver's seat	–	•	•	•
Heated front seats	○	○	○	•
Leather seating surfaces	○	○	○	–
Leather seating surfaces and wood package	○	–	–	•
COMFORT				
Climate control	•	–	–	–
Dual-zone automatic Electronic Climate Control	–	•	•	•
Digital Information Centre	•	•	•	•
Cruise control	•	•	•	•
Power door locks with programmable automatic locking	•	•	•	•
Power windows front and rear	•	•	•	•
Telescopic adjustment steering wheel	•	•	•	•
Steering wheel controls for sound system and cruise control, includes Driver Information Center toggle switches	•	•	•	•
AUDIO AND COMMUNICATION				
Sound system, AM/FM stereo with monochrome graphic display, CD player, 7-speaker system and MP3/auxiliary inlet	•	•	•	•
Sound system, AM/FM stereo with monochrome graphic display, 6-disc CD changer ⁴ , Bose® 11-speaker system, RDS and MP3/auxiliary inlet	○	○	○	○
DVD navigation system with single CD player ²	○	○	○	○
DVD navigation system with single CD player and Bose® Sound System	○	○	○	○
Universal hands-free, mobile phone adapter (includes Bluetooth capability)	○	○	○	○
LIGHT AND VISIBILITY				
Front fog lamps	–	•	•	•
Rainsense automatic windscreen wipers (low, medium, high settings)	–	•	•	•
Power glass sunroof	○	○	○	○
Parking Assist	○	○	○	○
Bi-xenon HID headlamps	–	○	○	•
LED taillights ²	•	•	•	•
PACKAGES				
Exclusive Package (Y5C)	–	○	○	•
Memory package, presets for 3 drivers, includes 8-way power driver's seat and driver personalisation functions				
8-way power adjustable passenger seat				
Leather seating surfaces				
Heated front seats (3-position controls: off, low, high)				
Visibility Package (Y5A)	–	○	○	○
Electrochrome interior rear-view mirror (light-sensitive, auto dimming)				
Exterior rear-view mirrors, power folding and auto dimming on driver's side				
Rear Parking Assist				
Handling Sport Package (Y5B)	–	○	•	•
Sports chassis, lowered, tuned for handling				
Tyres, 225/45 R 18				
Wheels, 7.5 x 18 aluminium, 7 spoke				
Prestige Package³	○	○	–	–
Leather seating surfaces				
DVD navigation with single CD player				
Bose® 11-speaker system				
Red Walnut interior	○	•	–	•

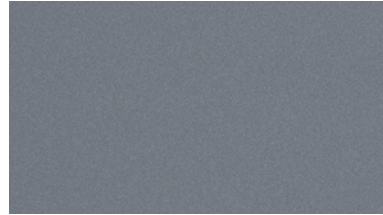
¹ N.a. on V6. ² Wagon only. ³ Please check your local price list for specific Prestige offer for your country. ⁴ Sedan only.

• standard ○ optional – not available

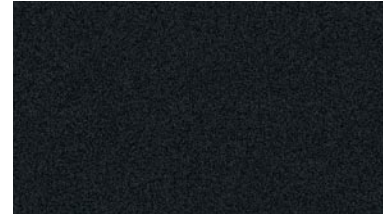
EXTERIOR



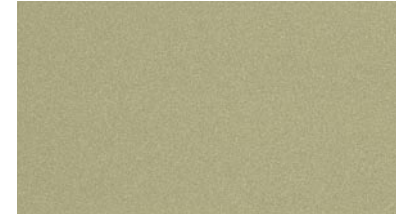
Black



Titan Grey Metallic



Jet Black Metallic



Pepper Green Metallic



Quicksilver Metallic

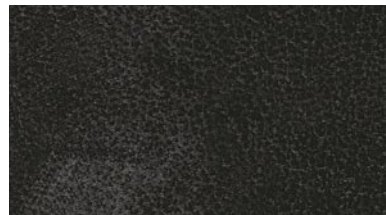


Parchment Silver Metallic



Nocturne Blue Metallic

INTERIOR



Leather Ebony



Woven Cloth Ebony



Leather Parchment



Woven Cloth Parchment

CADILLAC ADVANTAGES

RETAILER NETWORK

Whether you're at home or on the road, our Cadillac retailer network is there to offer you truly personal assistance. Count on us to arrange service appointments, answer questions about your new Cadillac, and ensure you're always satisfied with your ownership experience. To find the retailer closest to you, visit www.cadillac-europe.com.

WARRANTY

As a Cadillac owner, you expect nothing less than premium service and protection. Which is why your new Cadillac comes with a full 3-year or 100,000 km warranty (whichever comes first), plus a 6-year rust-through guarantee. All backed by an experienced Cadillac service team that will handle any issues with confidence and care. For more details, ask your local retailer.

CADILLAC ROADSIDE ASSISTANCE

In the event of an emergency, help is only a phone call away. Contact Cadillac Roadside Assistance, and we'll come to you as quickly as possible – 24 hours a day, 365 days a year. If we can't return you to the road straight away, we'll drive you to the nearest Cadillac retailer. Cadillac Roadside Assistance is yours free of charge for a period of 36 months from the date of registration. Ask your local retailer for details.

Images contained in this printed piece pertain to current products for the US market only. The written information contained herein is designed to be as comprehensive and factual as possible for the European market. We reserve the right, however, to make changes at any time, without notice, to prices, colours, materials, equipment, specifications, models and availability. Please contact your local retailer regarding product availability. Copyright 2010 General Motors. All Rights Reserved. All text, images and graphics are subject to the copyright and other intellectual property rights of General Motors. These materials may not be reproduced, distributed, or modified without the express written permission of General Motors.



Cadillac®

BLS CTS ESCALADE

CTS

Cadillac





SET YOUR OWN DEFINITION OF LUXURY

Sit behind the wheel of the CTS, and you're in a world of comfort matched to exceptional control. Streamlined "thin seat" technology gives the driver and front passenger generous support, while offering rear passengers extra legroom.

Now select the touches that make the CTS your own. Two-way power lumbar support gives more relaxation over long distances and more stability during hard cornering. A two-way memory system adjusts key driving, audio and climate settings for different drivers. You can even choose heated and ventilated front seats to keep extreme weather at bay.

CTS comfort can also begin before you step inside. The available keyless access system makes it unnecessary to open your CTS with a key. Keep the personalised fob in your pocket or purse, and the CTS will unlock when you pull the door handle or push the decklid button. The available remote start system can turn on the engine from as far away as 60 metres. If temperatures call for it, the system will also activate the climate control on its own. So your CTS is exactly to your liking when you get inside.



A 311 HORSEPOWER CONCERT HALL

When it comes to digital entertainment, the CTS is more advanced than any car in its class. The standard 6-disc in-dash CD changer makes it easy to keep the music coming. If an iPod™ is more your style, upgrade to an iPod™ connection in the centre console with integrated on-screen menus – both designed in conjunction with Apple® engineers. And a 40 GB hard drive not only lets you store favourite tracks, but pause-and-play live radio so you won't miss a beat.

Together with Bose®, the CTS is designed to deliver concert-quality sound, rich in tone and depth.

While a premium 8-speaker Bose® system is standard, up the ante with 10-speaker Bose® 5.1 Cabin Surround Sound that pumps out 300 watts of power. All with triple door seals, sound-reducing steel in the dash and an acoustically tuned tailpipe to keep unwanted noise from interrupting your musical pleasure.

Select the available navigation system, and the CTS also features a telescoping screen unlike anything you've seen before. Rising out of the dash to deliver 800-by-480 pixel colour resolution, the system lets you control the audio and navigation options via touch or voice commands. When the screen is down, it continues to display all the radio information you need.







WELCOME TO THE PASSING LANE

True performance sedans never ask you to compromise. The CTS is no exception. Both engine options deliver extraordinary power on demand. The first is a fire-breathing 3.6 liter Direct Injection V6, capable of 229 kW/311 hp. Unlike many direct injected engines, it's also designed to run on regular unleaded fuel. The standard CTS engine, a 2.8 liter V6 with 155 kW/211 hp, combines punch with controlled acceleration under all conditions.

Every CTS engine employs advanced variable valve timing (VVT) engineering. Based on engine speed and load, VVT adjusts inlet and exhaust valve timing on the fly, eliminating the difference between low-speed torque and high-speed performance. Thanks to drive-by-wire electronic throttle control, you also get smooth, gentle throttle control at low speeds, and a rapid response when you press the accelerator.

For precision shifting, the CTS is the first Cadillac to offer the Aisin AY6, a 6-speed manual gearbox famous for its short and accurate shift throws. If you prefer an automatic, the Hydra-Matic 6-speed with Driver Shift Control, inherited from the legendary Cadillac V-Series, gives a manual feel with lightning fast, ice-smooth shifts.

CTS TECHNICAL SPECIFICATIONS

ENGINE AND TRANSMISSION	2.8L V6	3.6L V6	3.6L V6 AWD
Displacement (cm ³)	2792	3564	3564
Number of cylinders	6	6	6
Bore x stroke (mm)	89 x 74.8	94 x 85.6	94 x 85.6
Number of valves	24	24	24
Camshaft location	DOHC	DOHC	DOHC
Fuel type	Unleaded (recommended 95 RON)	Unleaded (recommended 95 RON)	Unleaded (recommended 95 RON)
Powered axles	RWD	RWD	AWD
Transmission	6-speed manual/6-speed automatic with driver shift control	6-speed manual/6-speed automatic with driver shift control	6-speed automatic with driver shift control

PERFORMANCE

Performance (kW/hp/min ⁻¹)	155/211/6800	229/311/6400	229/311/6400
Max. torque (Nm/min ⁻¹)	246/3600	374/5200	374/5200
Top speed (km/h) - manual/automatic	225/205	249/241	225
Acceleration 0-100 km/h (sec.) - manual/automatic	8.3/9.0	6.3/6.3	6.7
Fuel consumption (l/100 km) ¹ - manual/automatic	17.7/16.8	18.1/16.6	16.8
- urban			
- extra-urban	8.4/7.7	8.4/7.9	8.0
- combined	11.8/11.0	12.0/11.1	11.2
CO ₂ emission combined (g/km) ¹	281/263	285/264	267

MASSES

Curb mass (kg) ^{2, 3} - manual/automatic	1765/1775	1788/1798	1882
Max. permissible mass (kg)	2360	2360	2425
Max. permissible mass of trailer - braked (kg)	1814	1814	1814
Max. permissible mass of trailer - unbraked (kg)	454	454	454
Max. permissible mass of combination - braked (kg)	4174	4174	4239
Max. vertical load on coupling point (kg)	75	75	75
Max. payload (kg) ⁴ - manual/automatic	595/585	572/562	543

DIMENSIONS

Overall length (mm)	4860	4860	4860
Overall width (mm)	1842	1842	1842
Overall height (mm)	1464	1464	1463
Wheelbase (mm)	2880	2880	2880
Min. ground clearance (mm)	150	150	148
Axle track (mm)			
- front	1569	1569	1569
- rear	1575	1575	1575
Headroom (mm)			
- front	986	986	986
- rear	944	944	944
Legroom (mm)			
- front	1078	1078	1078
- rear	913	913	913
Shoulder room (mm)			
- front	1441	1441	1441
- rear	1390	1390	1390
Hiproom (mm)			
- front	1400	1400	1400
- rear	1375	1375	1375
Turning circle curb to curb (m)	10.96	10.96	11.10
ISO Cargo volume (l)	373	373	373
Fuel tank volume (l)	68	68	68

WHEELS

Rim size (inch)	18 x 8.5J	18 x 8.5J	18 x 8.5J
Tyre size	235/50/R18	235/50/ZR18	235/50/R18

¹ In accordance with 1999/100/EC. (Optional equipment, maintenance, driving behaviour, road and weather conditions may affect the official results.)² Minimum curb mass. Figures in accordance with EC Directive. Curb mass condition is without driver and including coolant, oils, fuel, spare wheel and tools.³ Based on the minimum mass in running order minus 75 kg.⁴ If curb mass increases; consequently payload will decrease inversely proportional.

CTS EQUIPMENT AND OPTIONS

ENGINE, TRANSMISSION, CHASSIS	ELEGANCE	SPORT LUXURY
2.8L V6 VVT	•	○
3.6L V6 VVT Direct Injection	–	•
Rear-wheel drive	•	•
All-wheel drive	–	○
6-speed manual transmission	•	•
6-speed automatic transmission with Driver Shift Control	○	○
Suspension	•	•
- Comfort/Sport tuned suspension	•	•
- Performance tuned suspension with rear load leveling ¹	–	•
- Independent SLA front suspension	•	•
- Independent multi-link rear suspension	•	•
Limited slip differential	•	•
Power steering, speed sensitive variable assist	•	•

SAFETY & SECURITY

Brakes	•	•
- Disc front and rear		
- Anti-lock front and rear (ABS)		
Dynamic Rear Brake Proportioning	•	•
Panic Brake Assist	•	•
StabiliTrak™, vehicle stability enhancement system	•	•
Traction control, all-speed, brake and engine controlled	•	•
Airbags	•	•
- Dual-stage front driver		
- Dual-depth front passenger with occupant sensing and detection system		
- Seat mounted driver and front passenger side impact		
- Front and rear head curtain for front and second row coverage		
Safety belts	•	•
- Pretensioners front		
- Load-limiters front and rear		
Theft-deterrent alarm system	•	•
Door locks, power programmable with lockout protection	•	•
Tyre pressure monitoring system	•	•
Power window lockout	•	•
Child security door locks rear	•	•
ISOFIX child safety seat mounting system rear	•	•
Battery rundown protection	•	•

¹ Only on 3.6L rear-wheel drive.

EXTERIOR	ELEGANCE	SPORT LUXURY
Air extractors, side, chrome	•	•
Exhaust tailpipe, special acoustic tuned, chrome tip (dual tailpipes on 3.6L)	•	•
Glass, light-tinted	•	•
Headlamps, vertically stacked	•	•
Roof, advanced laser-brazed	•	•
Window accents, chrome	•	•
Wipers, low profile	•	•
Wheels	•	•
- 18" 9-spoke aluminium with painted finish	•	•
- 18" 9-spoke aluminium with polished finish ¹	–	•
Spare wheel, compact size	•	•

INTERIOR

Highly finished appointments including metallic accents	•	•
Integrated center stack with intuitive controls	•	•
Performance-oriented instrument cluster	•	•
Hand cut, sewn and wrapped surfaces	•	•
Courtesy lights with auto-fading	•	•
Reading lights, front	•	•
Ambient interior lighting	○	•
Armrest, front centre	•	•
Storage areas	•	•
- Glove box		
- Cup holders		
- Instrument panel		
- Centre console		
Wood trim package, real Sapele Pommele wood on the instrument panel, centre console and door trim	○	○
Visors, driver and front passenger, illuminated vanity mirrors	•	•
Floor covering, colour-keyed carpeting	•	•
Floor mats, colour keyed carpeted, removable	•	•
Cargo convenience net	•	•

SEATS

Leatherette seating surfaces	•	–
Leather seating surfaces	○	•
Front bucket seats	•	•
- 8-way power driver seat adjustments	•	•
- 8-way power passenger seat adjustments	○	•
- 2-way power lumbar control	○	•
- 2-position driver memory	○	•
- Heated	○	•
- Ventilated	–	○
Rear seats split-folding	•	•

• standard ○ optional – not available

CTS EQUIPMENT AND OPTIONS

COMFORT	ELEGANCE	SPORT LUXURY
Driver Information Center	•	•
- Programmable personalization		
- Trip computer		
- Message centre		
Air filtration system, includes pollen filter	•	•
Dual-zone automatic climate control with individual climate settings for driver and front passenger	•	•
UltraView sunroof	○	○
- Power		
- Tilt sliding		
- Express open		
- Power retractable interior shade		
Steering wheel	•	•
- Leather-wrapped	•	•
- Leather-wrapped with real Sapele Pommele wood	○	○
- Mounted cruise control and audio controls	•	•
Cruise control	•	•
Power windows, includes express-down all and express-up front	•	•
Power release trunk	•	•
Manual tilt and telescoping steering column	•	•
Power tilt and telescoping steering column with memory	–	○
Remote keyless entry	•	•
Keyless access system	–	○
Remote start (automatic transmission only)	–	○

AUDIO & COMMUNICATION

Audio system	•	•
- AM/FM Stereo	•	•
- Radio Data System (RDS)	•	•
- Voice recognition ²	•	•
- Bose® 8-speaker system	•	•
- Bose® 5.1 Cabin Surround Sound 10-speaker system	○	○
- 6-disc in-dash CD changer	•	•
- MP3 playback	•	•
- DVD player ²	•	•
Hard Drive Device (HDD)	○	○
- 40 gigabyte		
- USB connectivity, charging and control of MP3 devices (e.g. iPod™)		
- Music storage		
- Audio broadcasts buffering capability		
Navigation system with telescoping 8" full VGA touch screen ³	○	○
Integrated antenna rear window	•	•

² Only included with navigation system.

³ Only available in combination with Seating Package.

LIGHT & VISIBILITY	ELEGANCE	SPORT LUXURY
Headlamps	•	•
- Bi-Xenon high-intensity discharge (HID)		
- Adaptive Forward Lighting (automatically adjusting headlamps direction)		
- High-pressure washer system		
- Dynamic leveling system		
- Positioning lights, LED vertical light pipes		
Fog lamps, front and rear	•	•
Tail lamps, LED illumination	•	•
Centre high-mounted stop light, LED illumination	•	•
Rear-view mirrors	•	•
- Power folding	•	•
- Power adjustable	•	•
- Heated	•	•
- Color-keyed	•	•
- Driver side with aspheric glass	•	•
- Memory	○	•
Rear-view mirror inside, light-sensitive, auto dimming	•	•
Heated windshield washer fluid system	○	•
RainSense wiper system	○	•
Rear parking assist, ultrasonic with rearview LED display and audible warning	•	•

PACKAGES

Seating Package	○	•
Leather seating surfaces		
Memory Package		
Heated front seats		
Heated windshield washer fluid system		
8-way power passenger seat adjustments		
2-way power lumbar control		
Comfort Package³	○	•
RainSense wiper system		
Ambient interior lighting		
Convenience Package	–	○
Heated/ventilated front seats		
Power tilt and telescoping steering column		
Keyless access system		
Remote start (automatic transmission only)		

• standard ○ optional – not available

EXTERIOR COLOURS



Black Cherry



Blue Chip



Thunder Gray ChromaFlair



Black Raven



Gold Mist



Radiant Bronze



Light Platinum



Sunset Blue



Crystal Red Tintcoat



White Diamond Tricoat

CTS

INTERIOR COLOURS



EXTERIOR/INTERIOR COLOUR COMPATIBILITY

• standard – not available

	Interior Colours	Ebony seats with Ebony accents	Cashmere seats with Cocoa accents	Light Titanium seats with Ebony accents
Seat Trim				
Leatherette seating surfaces		•	–	•
Leather seating surfaces		•	•	•
	Interior Colours	Ebony seats with Ebony accents	Cashmere seats with Cocoa accents	Light Titanium seats with Ebony accents
Exterior Colours				
Black Cherry		•	•	•
Blue Chip		–	•	•
Thunder Gray ChromaFlair ¹		•	•	•
Black Raven*		•	•	•
Gold Mist		–	•	–
Radiant Bronze		•	•	–
Light Platinum		•	•	•
Sunset Blue		•	•	•
Crystal Red Tintcoat ²		•	•	•
White Diamond Tricoat ³		•	•	•

1 – ChromaFlair uses advanced light-interference technology and prismatic metallic pigments to create an intense, deeply lustrous colour.ca
 2 – Tintcoat is a premium two-layer paint application with the addition of a tinted clearcoat, lending the finish extra depth and brightness.
 3 – Tricoat is a meticulous three-layer process that results in a dramatic hue-shifting colour reminiscent of a show car finish.
 * A non cost option.

CADILLAC ADVANTAGES

RETAILER NETWORK

Whether you're at home or on the road, our Cadillac retailer network is there to offer you truly personal assistance. Count on us to arrange service appointments, answer questions about your new Cadillac, and ensure you're always satisfied with your ownership experience. To find the retailer closest to you, visit www.cadillac-europe.com.

WARRANTY

As a Cadillac owner, you expect nothing less than premium service and protection. Which is why your new Cadillac comes with a full 3-year or 100,000 km warranty (whichever comes first), plus a 6-year rust-through guarantee. All backed by an experienced Cadillac service team that will handle any issues with confidence and care. For more details, ask your local retailer.

CADILLAC ROADSIDE ASSISTANCE

In the event of an emergency, help is only a phone call away. Contact Cadillac Roadside Assistance, and we'll come to you as quickly as possible – 24 hours a day, 365 days a year. If we can't return you to the road straight away, we'll drive you to the nearest Cadillac retailer. Cadillac Roadside Assistance is yours free of charge for a period of 36 months from the date of registration. Ask your local retailer for details.

Images contained in this printed piece pertain to current products for the US market only. The written information contained herein is designed to be as comprehensive and factual as possible for the European market. We reserve the right, however, to make changes at any time, without notice, to prices, colours, materials, equipment, specifications, models and availability. Please contact your local retailer regarding product availability. Copyright 2010 General Motors. All Rights Reserved. All text, images and graphics are subject to the copyright and other intellectual property rights of General Motors. These materials may not be reproduced, distributed, or modified without the express written permission of General Motors.



Cadillac®

CTS BLS ESCALADE

ESCALADE

Cadillac



THE SUV THAT DOMINATES



Escalade catches the eye, turns the head, commands attention.

What can't be seen is the depth of functionality that underscores every minute detail.

To deliver an extraordinary driving experience.







SURROUNDED BY SOUND

The superior Bose® sound system gives your favorite tracks a delightful crispness and scrupulous instrumental detail. Whether you choose the multiple CD player, DVD, MP3 or radio, 10 strategically placed speakers optimize acoustics and timbre with stunning clarity. “Audiopilot®” assesses ambient noise levels and adjusts the sound accordingly to maintain your listening pleasure. With a large 8” widescreen display, the available Rear Seat Entertainment System offers state-of-the-art video and audio to passengers in both the second and third rows. An auxiliary input jack in the center console provides plug-and-play capability through the sound system for external devices. Dual channel wireless headphones and rear seat audio controls allow rear passengers to watch DVDs or listen to their own music.



INFORMATION AT YOUR FINGERTIPS

Part of the standard Information Package, Escalade's DVD-based navigation radio adds a large 8" touch screen display to the standard dual play radio. It also adds a separate slot for the unit's map disc, so drivers can listen to their favorite music while using the navigation system's detailed route guidance.

The GPS unit pinpoints your location and instantly maps out your route on either a 2-D or 3-D full-color map view. The system also supports a mode for driving on uncharted roads, handy for retracing your way if you go off the beaten path. In addition, the system's verbal commands give you turn-by-turn directions (limited detail routing). Supplementing the touch screen controls, the system's voice recognition capability allows you to access voice-tagged destinations, change radio stations or bands and even move from track to track when listening to CDs. Shift into reverse and the screen displays the image provided by the rear-view camera (included in the standard Information Package).



SPEAK WITH AUTHORITY

The Vortec 6.2l V8 is packed with advanced features inherited from the Cadillac racing program. It generates 301 kW/409 hp (ps) and 565 Nm. This next generation all-aluminum engine has high-flow cylinder heads plus VVT (Variable Valve Timing), enhancing fuel efficiency while boosting power. The difference is noticeable the moment you put your foot down on the electronically controlled gas pedal. Overtaking and changing lanes becomes effortless and immediate as the Escalade goes from 0 to 100 km/h (62 mph) in 6.8 seconds, with 90% of the torque available from 2,400 to 5,600 min⁻¹ (rpm).





A SMOOTH TRANSFER OF POWER

The Vortec V8 is complemented with the Hydra-Matic 6-speed automatic transmission. The awesome 301 kW/409 hp (ps) of power is smoothly transmitted to all four wheels (AWD), propelling the vehicle effortlessly forward. Escalade delivers powerful extra low-end torque in all gears, and features two overdrive gears and Driver Shift control. Making light work of any journey, whether you're carrying a carload of passengers and baggage or towing a hefty trailer (up to 3,100 kg braked mass).

ESCALADE

ENGINE AND TRANSMISSION

6.2 L FLEXPPOWER V8

Displacement (cm ³)	6162
Number of cylinders	8
Bore x stroke (mm)	103.25 x 92
Number of valves	16
Camshaft location	OHV
Fuel type	Bioethanol/Unleaded (recommended 95 RON)
Powered axles	AWD
Transmission	6-speed automatic with Driver Shift Control

PERFORMANCE

Performance (kW/hp/min ⁻¹) (kW/PS/rpm)	301/409/5700
Max. torque (Nm/min ⁻¹) (Nm/rpm)	565/4300
Top speed (limited)	170 km/h (105 mph)
Acceleration 0–100 km/h (s) (0–62 mph)	6.8
Fuel consumption (l/100 km) ¹	
– Urban	19.8
– Extra-urban	11.3
– Combined	14.4
CO ₂ emission combined (g/km) ¹	342

MASS

Curb mass (kg) ^{2, 3}	2609
Max. permissible mass (kg)	3221
Max. permissible mass of trailer – braked (kg)	3100
Max. permissible mass of trailer – unbraked (kg)	750
Max. permissible mass of combination – braked (kg)	6350
Max. vertical load on coupling point (kg)	126
Max. permissible roof load (kg)	90
Max. payload (kg) ⁴	612

DIMENSIONS

Overall length (mm)	5151
Overall width (mm)	2008
Overall height with/without roof rail (mm)	1927/1887
Wheelbase (mm)	2946
Min. ground clearance (mm)	212
Axle track (mm)	
– Front	1732
– Rear	1702
Headroom (mm)	
– Front	1044
– Center	996
– Rear	963
Legroom (mm)	
– Front	1049
– Center	991
– Rear	650
Shoulderroom (mm)	
– Front	1659
– Center	1656
– Rear	1567
Hiproom (mm)	
– Front	1636
– Center	1544
– Rear	1247
Turning circle curb to curb (m)	11.9
SAE cargo volume (l)	
– Behind 1st row seat	3084
– Behind 2nd row seat	1707.7
– Behind 3rd row seat	478.6
Fuel tank volume (l)	98

¹In accordance with 1999/100/EC. (Optional equipment, maintenance, driving behavior, road and weather conditions may affect the official results.)

²Minimum curb mass. Figures in accordance with EC Directive. Curb mass condition is without driver and including coolant, oils, fuel, spare wheel, and tools.

³Based on the minimum mass in running order minus 75 kg.

⁴If curb mass increases, consequently payload will decrease inversely proportional.

ENGINE/TRANSMISSION/CHASSIS	ELEGANCE	SPORT LUXURY
Vortec 6.2 I Variable Valve Timing V8 SFI	•	•
All-wheel drive	•	•
6-speed automatic transmission with Driver Shift Control	•	•
Tow/haul mode selector	•	•
Engine block heater	•	•
Suspension	•	•
– Road Sensing Suspension Package (electronically controlled shock absorbers)		
– Front independent, SLA, coil-over shock and stabilizer bar		
– Rear 5-link coil springs		
Heavy-duty locking rear differential	•	•
Automatic level control	•	•
Power steering	•	•
SAFETY/SECURITY		
Brakes	•	•
– Disc, front and rear		
– Anti-lock, front and rear		
StabiliTrak™, vehicle stability enhancement system with rollover mitigation	•	•
Traction control, all-speed, electronic	•	•
Airbags	•	•
– Dual-stage front, driver's and passenger airbags with automatic occupant sensing system		
– Head curtain side-impact airbags, 1st, 2nd and 3rd row outboard seating positions with rollover sensor		
Seat belt pretensioners with 360-degrees detection and activation	•	•
Theft-deterrent system, PASS-Key® III Plus	•	•
Remote keyless entry, 2 transmitters with panic button and content theft alarm	•	•
Door locks, power programmable with lockout protection and power lock for liftgate	•	•
EXTERIOR		
Glass, deep-tinted, all windows except windshield and doors	•	•
Window, chrome trim elements	•	•
Liftgate, power open/close	•	•
Roof-mounted baggage rack with chrome accents	•	•
Door handles, chrome	•	•
Moldings, color-keyed bodyside with chrome accents	•	•
Running boards, side with integrated assist steps, black with chrome accents	•	•
Fender side vent, chrome	•	•
Wheels	•	•
– 22", 7-spoke chromed aluminum		
Spare wheel, full-size steel spare 17" in lockable outside tire carrier	•	•
INTERIOR		
Premium soft instrument panel and interior trim materials	•	•
Brushed aluminum and wood trim	•	•
Lighting, interior courtesy with theater dimming	•	•
Front floor console	•	•
– Damped-door storage covers		
– Large storage bin		
Overhead console	•	•
– Reading lights		
– Controls for power liftgate		
– Controls for 2nd row remote power seat release feature (not on Elegance)		
– Controls for sunroof (on Elegance only in combination with optional sunroof)		
Cupholders	•	•
– Quad front		
– Dual 2nd row		
– Single 3rd row		
Glove box with spring-damped opening feature	•	•
Floor covering, color-keyed carpeting	•	•
Floor mats, color-keyed carpeted 1st and 2nd row, removable	•	•
Cargo shade, retractable	•	•
SEATS		
Nuance leather seating surfaces	•	•
Front bucket seats	•	•
– Driver's and front passenger 14-way power seat adjuster		
– 4-way power lumbar control		
– Power bolsters		
– 2-position driver memory		
– Articulating outboard head restraints		
– Fold-down inboard armrests		
– Independently heated driver's and front passenger seat cushions and seatbacks (3 settings)		
– Cooled seat cushion, seatback for driver and front passenger	–	•

• standard / ○ options / – not available

SEATS	ELEGANCE	SPORT LUXURY
2nd row 60/40 split-folding bench – 3 passengers – Center armrest – Outboard heated seat cushions (3 settings)	•	•
2nd row bucket seats – 2 passengers – Reclining – Heated seat cushions (3 settings) – Fold-down armrests	–	○
Seat release, 2nd row, power for tumble and fold	–	•
3rd row 50/50 split bench – 3 passengers – Can be folded, tumbled forward or totally removed (lightweight)	•	•
COMFORT		
Driver Information Center with programmable personalization, trip computer, and message center	•	•
Tri-zone automatic climate control with individual climate settings for driver and right front passenger	•	•
Rear air conditioning	•	•
Sunroof, power, tilt-sliding with express-open and close as well as wind deflector	○	•
Steering wheel – Wood and leather-wrapped rim – Mounted audio and Driver Information Center controls	•	•
Heated steering wheel	–	•
Cruise control	•	•
Pedals, power-adjustable for gas and brake	•	•
Power windows with driver express down and lockout features	•	•
AUDIO/COMMUNICATION		
Audio system – 10-speaker Bose® 5.1 Studio Surround™ Sound – AM/FM stereo radio – Radio Data System (RDS) – Digital Signal Processing (DSP) – 1 slot for DVD audio/video, CD video, MP3, and WMA burned CDs – 1 slot for 6-disc CD changer, CDX, CD audio, MP3, and WMA burned CDs	•	•
Rear audio system controls (volume, station, media)	•	•
DVD navigation system – Detailed road maps of major European countries – Voice recognition microphone – Full-featured touch screen – Traffic Message Channel (TMC)	○	○
Rear headphone jacks (2, headphones not included)	•	•
Rear Seat Entertainment System – In-dash DVD player with remote control – Overhead display, 8" wide screen – 2 sets of wireless infrared headphones – Auxiliary audio/video jacks on rear of center console – CD-R, CD-R/W, MP3 capability, – LED backlighting display	○	•
LIGHT/VISIBILITY		
Headlamps – Halogen composite – Automatic leveling system – Cadillac logo etched on high-beam bulb cover	•	•
Fog lamps, front and rear	•	•
Tail lamps LED illumination	•	•
Center high-mount stop LED illumination	•	•
Rear-view mirrors – Power folding – Power adjustable – Heated – Color-keyed with chrome underside – Driver side electrochromic (light-sensitive, auto-dimming) – Programmable to provide curb view when in reverse	•	•
Rainsense wipers front and heated windshield washer fluid system	•	•
Rear window wiper/washer and defogger	•	•
Rear-view mirror inside, auto-dimming with 8-point compass and outside temperature display	•	•
Rear parking assist, Ultrasonic with rear-view LED display and audible warning	•	•
Rear-view camera	○	○

• standard / ○ options / – not available

EXTERIOR COLOURS



Gold Mist Metallic



Black Raven



Stealth Grey



Blue Chip Metallic



Quicksilver Metallic



Infrared Tintcoat



White Diamond Tricoat

ESCALADE

INTERIOR COLOURS



Ebony/Ebony (leather/dashboard)
Ruby Burl (wood)

Very Light Cashmere/Cocoa (leather/dashboard)
Chocolate Burl (wood)

CADILLAC ADVANTAGES

RETAILER NETWORK

Whether you're at home or on the road, our Cadillac retailer network is there to offer you truly personal assistance. Count on us to arrange service appointments, answer questions about your new Cadillac, and ensure you're always satisfied with your ownership experience. To find the retailer closest to you, visit www.cadillac-europe.com.

WARRANTY

As a Cadillac owner, you expect nothing less than premium service and protection. Which is why your new Cadillac comes with a full 3-year or 100,000 km warranty (whichever comes first), plus a 6-year rust-through guarantee. All backed by an experienced Cadillac service team that will handle any issues with confidence and care. For more details, ask your local retailer.

CADILLAC ROADSIDE ASSISTANCE

In the event of an emergency, help is only a phone call away. Contact Cadillac Roadside Assistance, and we'll come to you as quickly as possible – 24 hours a day, 365 days a year. If we can't return you to the road straight away, we'll drive you to the nearest Cadillac retailer. Cadillac Roadside Assistance is yours free of charge for a period of 36 months from the date of registration. Ask your local retailer for details.

Images contained in this printed piece pertain to current products for the US market only. The written information contained herein is designed to be as comprehensive and factual as possible for the European market. We reserve the right, however, to make changes at any time, without notice, to prices, colours, materials, equipment, specifications, models and availability. Please contact your local retailer regarding product availability. Copyright 2010 General Motors. All Rights Reserved. All text, images and graphics are subject to the copyright and other intellectual property rights of General Motors. These materials may not be reproduced, distributed, or modified without the express written permission of General Motors.