

ESCALADE



ESCALADE

EXTERIOR

Power Liftgate:

The Escalade's power liftgate can be opened or closed with the liftgate handle, or even remotely, using either the vehicle key-fob or a switch in the overhead console.



Wheels:

The Escalade's standard 22", 7-spoke chromed aluminum wheels are authoritative, handsome and perfectly match the scale of this impressive vehicle. These 22" wheels are beautifully complemented by P285/45R22 all-season tires.



Setting the standard for luxury SUVs, the Cadillac Escalade catches the eye and turns heads. And while its impressive looks are commanding attention outside, its intoxicating power is thrilling those on the inside. The Escalade's Vortec 6.2L V8 engine is capable of generating 563 Nm of torque, and it does so with effortlessly smooth control thanks to advanced Magnetic Ride Control suspension. Beyond the authoritative power and imposing looks, there's real refined substance to the Escalade. Its opulent cabin seats up to eight people, and its levels of on-board equipment and technology are simply stunning. The Cadillac Escalade was created with one purpose – to become one of the finest, most accomplished luxury SUVs on the planet. Job done.



ESCALADE

EXTERIOR

You are looking at the world's first and only full-size luxury hybrid SUV. Seamlessly combining luxury and a responsible 2-mode Hybrid System, the Escalade Hybrid is a unique vehicle in this category – a hybrid that offers both impressive performance and refined handling. A wide range of cutting-edge technologies deliver top drivetrain efficiency and safety, while also enabling the Escalade Hybrid to deliver excellent driving dynamics in all types of conditions. A rigid frame provides a sturdy foundation for the advanced suspension system and the Escalade Hybrid's surprisingly adept off-road capabilities. An exciting mixture of comfort, performance, and intelligent efficiency, the Escalade Hybrid sets new standards in luxury hybrid technology.



Advanced Exterior Mirrors:

The outside mirrors are heated, power adjustable and power foldable, aiding all round view and comfort. Additionally the mirrors have integrated ground illumination, programmable curb-tilt and driver's side electrochromic functions for added safety.

Tire Pressure Monitor:

A sensor in each tire constantly monitors air pressure. Should there be a drop in pressure. The driver will receive an alert via the onboard Driver Information Center.

Key Visual Differences:

Visually, the Hybrid differs from the petrol variant due to striking 'Hybrid' badge found on the front fender, C-pillar and rear liftgate.



ESCALADE

INTERIOR

Surrounded by Sound:

A Bose® 5.1 10-speaker surround-sound system delivers extraordinary acoustics with stunning clarity. An 8" touch-screen navigation system comes standard, while an available rear seat entertainment system offers state-of-the-art video to both the second and third rows.



Individualized Comfort:

14-way power-adjustable front seating is heated and cooled with memory settings for up to two drivers. Tri-zone climate control takes temperature individualization further still, and Adaptive Remote Start allows the engine to be started and the interior temperature set from up to 60 meters away.

Power-adjustable Foot Pedals:

Escalade foot pedals are fully power-adjustable allowing for greater levels of driver comfort.

The interior of the Escalade redefines the word 'luxurious'. Expertly crafted with an abundance of handsome natural materials, the Escalade guarantees that its occupants arrive in both comfort and style. Leather seating surfaces are supple and French-stitched. Accents are brushed aluminum and burl. The power tilt-adjustable steering wheel is leather trimmed, and houses integrated controls for audio and cruise. A sophisticated Driver Information Center continuously displays vehicle status, and instrumentation flows forward to increase personal space. When it comes to attention to detail, the Escalade is simply peerless in the luxury SUV segment.



ESCALADE

ENGINES & TRANSMISSIONS

The Escalade's Vortec 6.2L V8 engine is packed with advanced features inherited from the Cadillac racing program. This all-aluminum engine has high-flow cylinder heads, plus VVT (Variable Valve Timing), enhancing fuel efficiency while boosting power and torque to 301 kW / 409 hp and 563 Nm. The always on all-wheel drive system features fixed torque bias which enhances vehicle stability by distributing drive torque to front and rear wheels, perfectly modulating power and torque. The Escalade delivers powerful extra low-end torque in all gears, and features two overdrive gears to help make light work of any journey, whether you're towing a hefty trailer, or just carrying a carload of passengers and luggage.



Active Fuel Management:

Active Fuel Management senses when full 8-cylinder power is unnecessary, and automatically makes adjustments, allowing the vehicle to run on four cylinders instead. The system can considerably improve fuel efficiency.

Hydra-Matic Gearbox:

Both Escalade models feature Hydra-Matic automatic transmission. This transmission features Driver Shift Control, delivering a manual feel but with lightning fast, automatic shifting.



ESCALADE

HYBRID

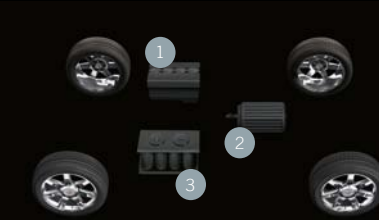


Progressively powerful, the Escalade Hybrid utilizes advanced technologies to improve fuel efficiency and help reduce CO₂ emissions, switching seamlessly between conventional engine technology and electric motors according to the demand for speed and power. This sophisticated 2-mode Hybrid system incorporates a powerful 6.0L 337 hp V8 petrol engine, supplemented by electricity stored in a battery pack and generated by electronic traction motors in the transmission. The 2-mode system allows the vehicle to operate solely on battery power during idling or low-speed driving situations, and even boasts a regenerative braking feature which captures energy lost during braking and coasting, and harnesses it in the 300-volt Energy Storage System.

Combining an advanced hybrid system and Active Fuel Management, the Escalade Hybrid runs on two types of power – energy created by its petrol engine, and electricity from electric motors.

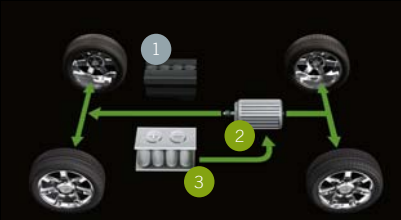
- 1 Engine
- 2 Hybrid Transmission
- 3 Battery pack

1. Auto Stop (engine off)



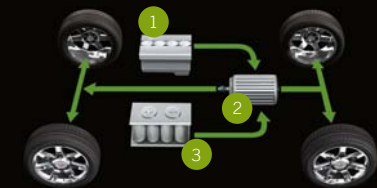
While stopped, the engine may shut off to conserve fuel, then seamlessly restart once you accelerate.

2. Electric/battery power



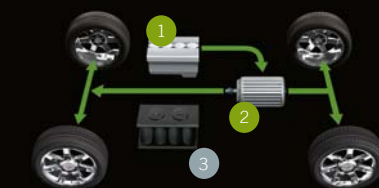
While driving at low speeds or in start-and-stop traffic, the vehicle may operate fully in electric mode.

3. Hybrid power



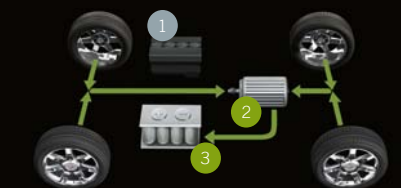
As vehicle demands increase, electric motors and engine combine to provide power and acceleration.

4. Engine power



If vehicle demands require, primarily for high-end speeds and heavy loads, the Hybrid may rely entirely on the power of the 337hp 6.0L petrol engine.

5. Regenerative braking/battery recharging



Regenerative braking captures some of the energy lost during vehicle braking and coasting, and returns it to the battery.

ESCALADE

DRIVING DYNAMICS

Front Suspension:

Short and long arm independent front suspension uses a coil-over-shock design for a smooth ride. A forged lower control arm helps reduce unsprung weight, and a 5-link coil rear unit with load-leveling allows for long suspension travel and impressive load-carrying capacity.

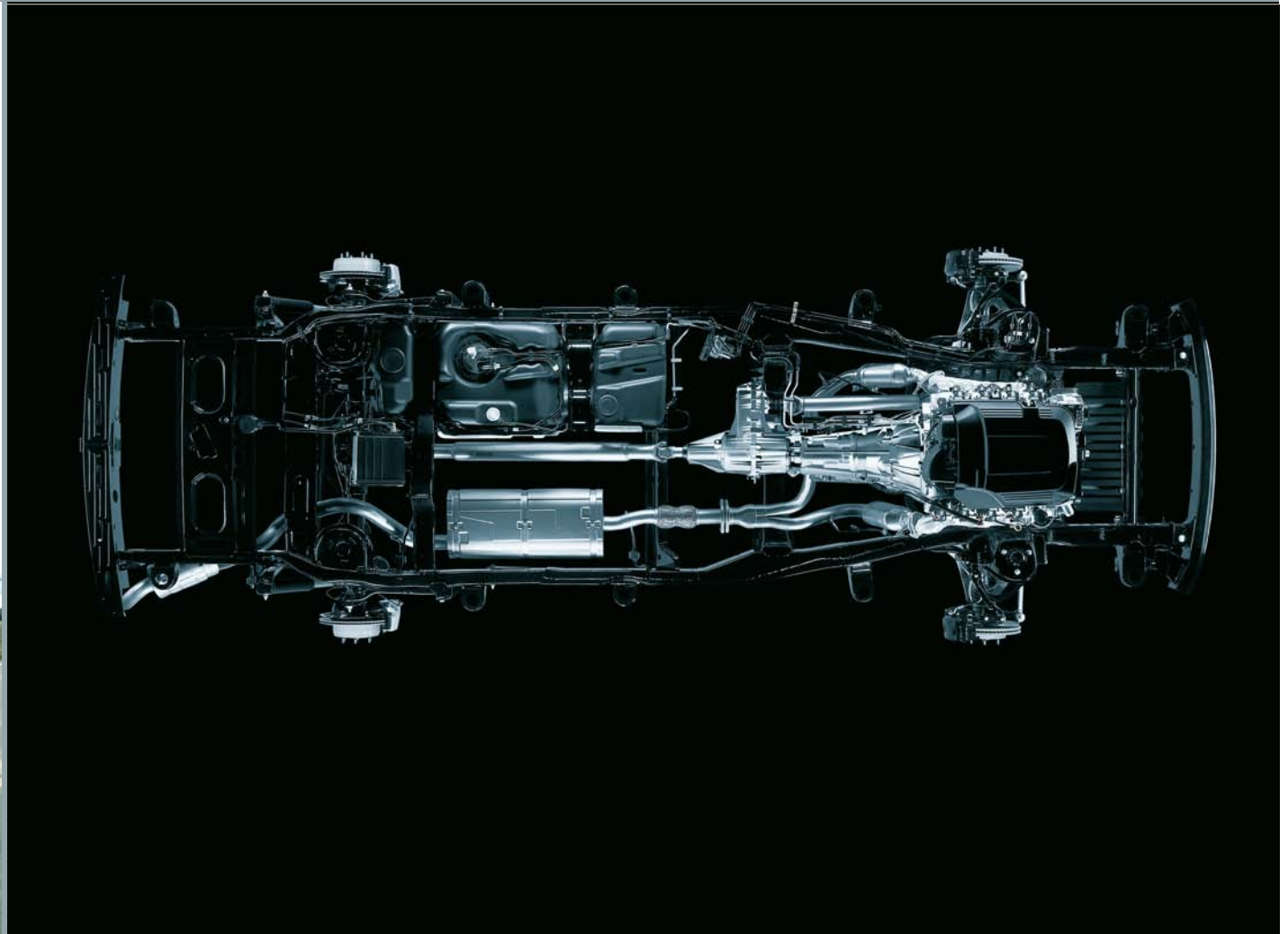
Magnetic Ride Control:

The Magnetic Ride Control, standard in every Escalade, continuously reads the road and adjusts to changing conditions. The system uses magnetic damper fluid and real-time damping to deliver exceptional ride quality and improved handling.

Automatic Rear Load-leveling:

A load-leveling system keeps the headlamps pointed down the road correctly and prevents the vehicle from pitching. It responds in real-time to road and driving conditions, based on wheel and body motions determined through sensors positioned at all four corners of the car.

The perfect encapsulation of presence and power, the Escalade also delivers impressive performance and handling characteristics. Adorned with a wide range of cutting-edge technologies, the Escalade delivers excellent driving dynamics in all conditions. The front track is the widest in the full-size SUV segment, further contributing to stability on and off road. Its rigid frame provides a sturdy foundation for the car's advanced suspension system, while the all-wheel drive system gives the driver control and confidence on any road surface. Capable of shifting up to 100% of available torque from front to rear wheels based on road conditions, the system delivers superior low-speed drivability but displays no binding in tighter turns.



ESCALADE

SAFETY

A look beneath the Escalade's imposing exterior reveals a comprehensive approach to safety. With preventative safety features like StabiliTrak, Antilock Brakes System (ABS), and an advanced all-wheel drive system, the Escalade was designed to help avoid collisions. But should an incident occur, the Escalade does more than enough to protect you and your passengers.



StabiliTrak:

Standard on all Escalade models, the StabiliTrak system incorporates Rollover Mitigation. This computer-controlled, 4-channel electronic stability control system, senses conditions that might result in loss of control, and makes adjustments to braking and power delivery accordingly.

Airbags:

Escalade's air bag configuration consists of a dual-stage driver's front airbag, a dual-stage front passenger airbag with Automatic Occupant Sensing System, as well as driver and front passenger seat-mounted side-impact airbags and roof-mounted head/curtain side airbags for all three rows.

Antilock Brakes:

Incorporating large-diameter vented rotors and twin-piston front calipers, the Escalade's Antilock Brake System provides strength and cooling properties that are every bit a match for the vehicle's formidable power.

ESCALADE

TRIM LEVELS & EQUIPMENT

THE ESCALADE INCORPORATES SOME OF THE INDUSTRY'S BEST LUXURY ATTRIBUTES, ADVANCED TECHNOLOGIES AND ELECTRONICS.

HIGHLIGHTS OF 'SPORT LUXURY' MODEL:

- Vortec 6.2L V8 aluminum engine with Active Fuel Management and E85 FlexPower capability (301 kW / 409 hp)
- Hydra-Matic 6-speed automatic transmission, heavy-duty:
 - Electronically controlled with overdrive and tow/haul mode
- Heated steering wheel
- Second row bucket seats, including:
 - Leather seating surfaces
 - Reclining heated seats (3 settings) with fold-down armrests

HIGHLIGHTS OF HYBRID 'SPORT LUXURY' MODEL:

- Vortec 6.0L V8 aluminum engine with Active Fuel Management and late intake valve closing (248 kW / 337 hp)
- GM Strong Hybrid automatic transmission, featuring:
 - Electronic ratio select
- Second row 60/40 split-folding bench with 3 seats, including:
 - Leather seating surfaces
 - Outboard heated seats (3 settings)
 - Center armrest

HIGHLIGHTS OF BOTH MODELS:

- Magnetic Ride Control suspension system
- 22"x 9" 7-spoke chromed aluminum Wheels, 4 - 22"x 9"
- P285/45R22 all-season tires
- Low tire pressure indicator
- Driver & front passenger seats with 14-way power adjuster incl. 4-way lumbar control
- Heated/cooled front seats
- Air conditioning with tri-zone automatic climate control and individual climate settings
- Keyless entry with remote start (incl. 2 transmitters, panic button and theft alarm)
- Ultrasonic Rear Parking Assist, with audible warning
- Rear-view camera system

- Power tilt-sliding Sunroof with express-open/close and wind deflector
- Bose® Audio System with Navigation (compact flash) including
 - AM/FM stereo with MP3/CD/DVD video/audio changer
 - Studio Surround Sound system with 10 speakers

OPTIONAL EQUIPMENT FOR BOTH MODELS:

- Rear-seat Entertainment System including
 - Rear seat in-dash DVD player with remote control
 - Overhead display with LED backlit screen
 - 2 sets of wireless infrared headphones
 - Auxiliary audio/video jacks on rear of center console with sound compression
 - CD-R and CD-R/W capability, MP3 capable
- Power-retractable Assist steps (replaces standard fixed body color/chrome steps)

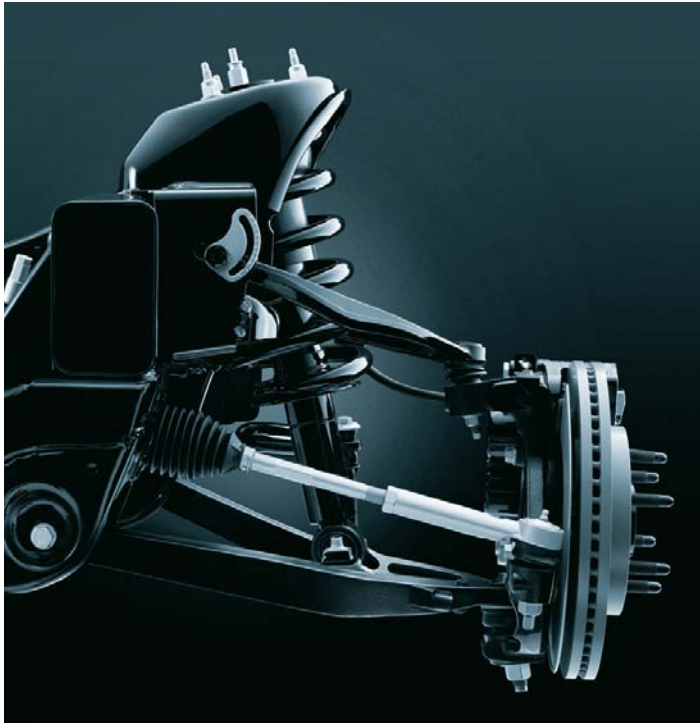
OPTIONAL EQUIPMENT FOR 'SPORT LUXURY' MODEL:

- Second row 60/40 split-folding bench with 3 seats, including:
 - Leather seating surfaces
 - Outboard heated seats (3 settings)
 - Center armrest
- Power seat release for tumble and fold



ESCALADE

TECHNICAL INFORMATION



ENGINE:

'SPORT LUXURY'

- Vortec 6.2L V8 aluminum engine with Active Fuel Management and E85 FlexPower capability
- Maximum power (kW): 301
- Maximum power (hp): 409
- Maximum torque (Nm): 563
- Top speed in km/h: 170
- Acceleration 0-100 km/h (s): 6.7
- Fuel consumption:
 - urban: 20,1 l / 100 km
 - extra urban: 11,3 l / 100 km
 - combined: 14,5 l / 100 km
- CO₂ emission combined: 339 g/km
- Hydra-Matic 6-speed automatic transmission

'HYBRID SPORT LUXURY'

- Vortec 6.0L V8 aluminum Engine with Active Fuel Management and late intake valve closing
- Maximum power (kw): 248
- Maximum power (PS): 337
- Maximum torque (Nm): 495
- Top speed in km/h: 170
- Acceleration 0-100 km/h (s): 8.4
- Fuel consumption:
 - urban: 11,6 l / 100 km
 - extra urban: 10,7 l / 100 km
 - combined: 11,1 l / 100 km

- CO₂ emission combined: 264 g/km
- GM Strong Hybrid 4-speed automatic transmission

WHEELS:

- 22" x 9" 7-spoke chromed aluminum wheels
- P285/45R22 all-season tires

DIMENSIONS IN MM:

Exterior Length: 5142
Height: 1887
Width: 2008
Wheelbase: 2946
Track width front: 1732
Track width rear: 1702
Turning radius (m): 11,9

SAE cargo volume (l): 3084*
– Behind 1st row seat: 1707*
– Behind 2nd row seat: 478
– Behind 3rd row seat: 98
Fuel tank (l): 98

* Figures quoted pertain to petrol engine model only



ESCALADE

EXTERIOR & INTERIOR COLORS

EXTERIOR

WHITE DIAMOND
Tricoat**

GALAXY GRAY
Exterior

BLACK RAVEN
Exterior

SILVER LINING
Exterior

BLACK ICE
Metallic*

GOLD MIST
Exterior

INFARED
Tintcoat**

MOCCA STEEL
Metallic*

*Special metallic paints with additional surcharge

**Premium paints with premium surcharge

INTERIOR

EBONY NUANCE LEATHER SEATS
with Ebony upper accents

CASHMERE
NUANCE LEATHER SEATS
with Cocoa upper accents



CADILLAC ADVANTAGES

WARRANTY & CONTACT

CADILLAC SALES AND SERVICE SPECIALISTS

Whether you're at home or on the road, your Cadillac sales and service specialists are there to offer you truly personal assistance. Count on them to arrange service appointments, answer questions about your new Cadillac and ensure that you're always satisfied with your ownership experience. To find the Cadillac sales and service specialist closest to you, visit www.cadillaceurope.com.

WARRANTY

As a Cadillac owner, you should expect nothing less than premium service and protection, which is why your new Cadillac comes with a full 3-year or 100,000 km warranty (whichever comes first), plus a 6-year rust-through guarantee, all backed by an experienced Cadillac service team that will handle any issues with confidence and due care. For more details, ask your Cadillac sales and service specialist.

CADILLAC ROADSIDE ASSISTANCE

In the event of an emergency, help is only a phone call away. Contact Cadillac Roadside Assistance and they will come to you as quickly as possible – 24 hours a day, 365 days a year. If they can't get you back on the road straightaway, they will drive you to the nearest Cadillac sales and service specialist. Cadillac Roadside Assistance is yours free of charge for a period of 36 months from the date of registration. Ask your local Cadillac sales and service specialist for details.

Images shown in this communication may include product details referring to the US or Canadian car configurations and may differ from car configurations available in Europe. The written information contained herein is designed to be as comprehensive and factual as possible for the European market. We reserve the right, however, to make changes at any time, without notice, to prices, colors, materials, equipment, specifications, models and availability. Please contact your local Cadillac sales and service specialist regarding product availability. Copyright © 2010 General Motors. All rights reserved. All text, images and graphics are subject to the copyright and other intellectual property rights of General Motors. These materials may not be reproduced, distributed, or modified without the express written permission of General Motors.