

Mazda CX-7



mazda



"THE HIROSHIMA SPIRIT IS TO NEVER GIVE UP, TO PURSUE EXCELLENCE. TO MAINTAIN A "CAN DO" ATTITUDE."



"WITH A COMPACT, LIGHT ENGINE, A LIGHT BODY AND A BEAUTIFUL DESIGN. WE AIM TO CREATE A NEW STANDARD OF CARS."



"MAZDA WILL CONTINUE TO CHALLENGE, IN ALL OUR PURSUITS. WE'LL ALWAYS DO THINGS DIFFERENTLY."

MASAHIRO MORO
EXECUTIVE OFFICER



FOLLOW THE STORY AT Mazda.co.uk



"DESPITE ADVANCEMENT IN TECHNOLOGY, YOU CAN ONLY GO SO FAR WITH COMPUTERS OR OTHER SCIENTIFIC MEANS. ULTIMATELY, IT DEPENDS ON THE CARMAKER'S SKILL AND SENSITIVITY."

HIROTAKA KANAZAWA
MANAGING EXECUTIVE OFFICER



THE DEFINITION OF INNOVATION

It's rare, but from time to time you discover something... different. Where convention has been broken, the rules have been twisted and 'New' has been created. For example take a powerful and dynamic sports car as a starting point; add size, presence and intelligent 4-wheel drive. The result? The diesel Mazda CX-7.



A FRESH PERSPECTIVE

Purposeful and perfectly balanced. Mazda CX-7 will take you to places not yet travelled. From the commanding seating position, behind the steeply raked windscreen and leather-wrapped steering wheel. Powered by a responsive 2.2-litre turbo diesel engine delivering 173ps and a heart pounding 400Nm of torque, your world becomes a whole new experience.



AN OPEN ROAD CALLS

City street or sweeping country road, Mazda CX-7 effortlessly smoothes the miles away. Tuned specifically for UK roads to provide not just exhilarating performance, but sports car inspired handling and poise. The Mazda CX-7 doesn't suffer the compromise of body roll and numb steering found in many SUVs, meaning you can push on with confidence, just like a sports car.

Power flows through a sporting close-ratio 6-speed manual gearbox, delivered to the road through Mazda's advanced active torque 4-Wheel-Drive System, offering controlled 'take-off' under acceleration, enhanced stability on the road and improved traction in adverse conditions.



MAKING THE CONNECTION

Deep inside, beyond the head-turning style and luxurious elevated interior, lies an advanced technological heart. Active Torque Split 4-Wheel Drive achieves a fine balance between a sporty, responsive drive and stability on wet, snowy or other similarly challenging surfaces.

Powerfully optimised control and handling wherever, whenever and however you need it.



4-wheel drive system

The onboard computer automatically determines the best mode depending on driving style and conditions. From normal front-wheel drive, up to 50% of power is transferred to the rear wheels under hard acceleration, while on slippery surfaces, power is sent to the wheels that have the most traction to optimise control.

Staying in control

The Mazda CX-7's Dynamic Stability Control (DSC) and Electronic Traction Control systems optimise roadholding on slippery surfaces and tight bends.

Stopping power

Large ventilated front and rear disc brakes are combined with a Four-Wheel Anti-lock Braking System (4W-ABS) with Electronic Brake-force Distribution (EBD) to provide optimum stopping power.

A NEW POINT OF VIEW

In command. From the enveloping sports seats, finished in Stone or Black leather, to the sunken 'red on black' dials, Mazda CX-7 is true to its sports car DNA. Intuitively positioned controls combined with leather-wrapped steering wheel, gearshift and handbrake, plus heart-stirring audio from the premium 6-CD audio system, custom-designed by Bose® for the Mazda CX-7, make this the place you want to be.



A SEPARATE REALITY

Beauty is more than skin deep. So everything you see, feel and hear in the Mazda CX-7 is meticulously designed and built to satisfy the most exacting standards. Whether fortunate enough to take the driving seat or simply share the space alongside, your enjoyment of the journey is assured.





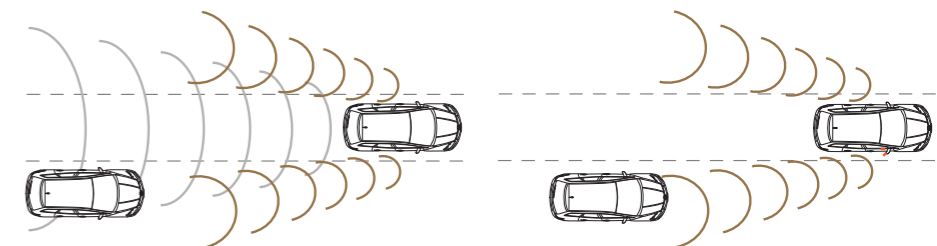
A DIFFERENT WORLD

Inside, as well as out, Mazda CX-7 is both refined and sophisticated. Rain-sensing wipers and Xenon headlights switch on automatically as rain or light levels fall. Eye catching 19" alloy wheels, stylish chrome detailing, privacy glass and a sporty roof spoiler underline the Mazda CX-7's sports credentials.



MZR-CD 2.2 Diesel

This advanced engine meets stringent Euro Stage V emissions standards with no loss of performance. This is due to a Selective Catalytic Reduction (SCR) system that converts nitrogen oxides in the exhaust into harmless nitrogen and water.



Rear Vehicle Monitoring (RVM)

RVM warns you of a vehicle approaching from behind at a speed that would make it unsafe for you to change lanes, by activating a warning light in the wing mirror on the relevant side of the vehicle. If you were to switch on your indicator, the system alerts you with a flashing light and audible alarm.

RVM also incorporates Blind Spot Monitoring (BSM). This alerts you if another vehicle moves into your blind spot, ensuring you do not accidentally pullout when it is unsafe to do so. RVM is equally effective day or night and is not affected by adverse weather.

LUXURY AS STANDARD

Available with one high specification, your choice is made even simpler. An impressive list of standard features includes luxurious power adjustable leather seats, satellite navigation with integrated reversing camera and voice-activated Bluetooth®, in addition to advanced safety features such as Rear Vehicle Monitoring and hazard warning lights that flash automatically when the ABS sensors detect emergency braking, so following drivers get ample warning when you need to stop in a hurry.





MAKE IT YOURS

You should make the most of your Mazda CX-7. So we've created a range of purpose-designed accessories – like the boot storage system and detachable tow bar – that can help boost its versatility.



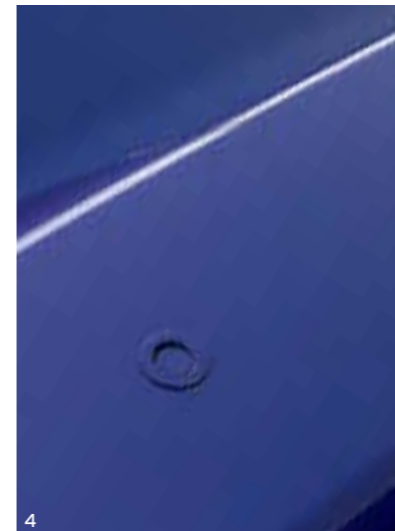
1



2



3



4



5



6



7



8



9

Stainless steel scuff plates (main image)

1. 19" alloy wheels – Design 49
2. Front under garnish
3. Rear under garnish
4. Parking distance sensors
5. Mudflaps with chrome moulding

6. Detachable tow bar
7. Boot organiser
8. Premium carpet floor mat
9. iPod connector

MAZDA FINANCIAL SERVICES

Who are we?

Mazda Financial Services is a division of Santander Consumer, the leading Consumer Finance House in Europe. We provide finance for your Mazda vehicle through your Mazda dealer at competitive rates and insurance products. We are one of the UK's leading 'point of sale' finance providers, which means we enable your Mazda dealer to provide you with a convenient "One-Stop Shop" when choosing your next Mazda. From our wide range of finance plans, there's an option that's right for you, whether you are thinking of a new or used Mazda.

What you can expect from Mazda Financial Services:

- Face-to-face service from trained, plain-talking people at your local Mazda Dealer.
- Assistance in renewing your car. We'll help you choose the right finance package to enable you to renew your Mazda car as often as you like.
- Fixed Interest Rates. The interest rate on your loan is fixed for the duration of the agreement.
- Flexible terms tailored to your motoring needs. As specialists in Mazda vehicles we can tailor a finance package to both your budget and your motoring / ownership needs.

Please ask your sales executive for a tailor-made finance quote for your new car.

Mazda Financial Services Finance Plans:

Mazda Conditional Sale:

The traditional way of buying your car. Mazda Conditional Sale is flexible and simple, with a range of options to suit everyone.

The benefits

- Simple – fixed, equal, regular instalments.
- Predictable – pay all your instalments and you own the car.
- Flexible – you determine your repayment period at the start of your contract, meaning that you have total control of your budget.

How it works

1. Choose your Mazda. Tell your dealer the deposit and repayment period you want, from 12-60 months.
2. Agree your repayments. These are based on how much is left to pay, plus interest where applicable.
3. Drive away the moment we activate your agreement.

At the end of your contract, when all instalments have been made, the car is yours. You now have two choices:

- **Renew:** Choose another Mazda. The car is yours; you can part exchange it for another Mazda and use the value as your deposit.
- **Retain:** Keep the car. The car is yours once all instalments have been made.

Mazda Personal Contract Purchase:

The finance plan that helps you to change your Mazda car at more regular intervals. Enabling shorter term finance agreements, meaning a new car more often.

The benefits

- You can fund your car over shorter periods, so you get the chance to change more often.
- The flexibility at the end of the agreement to choose to renew, retain or return your Mazda.
- You're protected against any fall in used car prices by an Optional Final Payment (OFP).

How it works

1. Choose any new or used Mazda. Estimate your annual mileage.
2. We estimate the minimum amount your car will be worth once your contract finishes – the OFP.
3. To work out your regular payments we add any interest charges and deduct your deposit plus the OFP from the price of your new Mazda.
4. Drive away the moment we activate your agreement.

At the end of your contract, when all instalments have been made, you now have three choices.

- **Renew:** Choose another Mazda. Use any excess value above the OFP towards a deposit for another Mazda. You can trade in your car at any time or sell it privately having settled your account.
- **Retain:** Keep the car. Simply pay the OFP, and the car is yours.
- **Return your car:** There's nothing more to pay if the car's in good condition and within the agreed mileage.

OUR COMMITMENT TO THE ENVIRONMENT

Mazda makes cars that excite, look stylish and appealing, are fun to drive and make you want to get behind the wheel again and again. But we are equally committed to the environment, to the creation of a sustainable future for all. This means limiting the Earth's resources that we use and always considering the environmental impact in everything we do.

Our sustainability programme is dedicated to the development of clean technologies. This covers every aspect of a vehicle's impact on the environment – from planning and development, through to manufacturing, use and eventual recycling / disposal. Below are just three examples of how our environmental policies have led to significant advances in 'green' technology.

Plant-derived plastics

Our interior car plastics use carbon-neutral* plant-derived biomass – an industry first.

Benefits:

- Reduces reliance on fossil fuels
- Cuts CO₂ emissions
- Uses sustainable raw materials
- Requires 30% less energy to produce than petroleum based plastics
- Is three times stronger than conventional bioplastics
- Has 25% higher heat resistance than conventional bioplastics
- Produces lighter, stronger parts improving fuel economy

*CO₂ released when the bioplastic decomposes or is burned is comparable to the amount absorbed by growing plants, having a negligible impact on total atmospheric CO₂ levels.

Semi-dry machining process

Conventional machining of cast metal parts uses huge amounts of water-based coolant to cool and lubricate cutting tools, and remove and collect waste metal. With Mazda's semi-dry machining process, we have substituted large volumes of coolant for tiny quantities of atomised biodegradable oil in a jet of air.

Benefits:

- 84% reduction in the amount of coolant required
- Reduced electricity consumption by 40% on machining lines
- 80% cut in waste liquids

Recycling

Mazda has made a substantial commitment to recycling.

- We have reduced waste material in our production facilities by 55% since 1990
- In 1992 we became the first car manufacturer to recycle bumpers
- Over 75% of our plastic parts can be recycled
- All of our gaskets and brake-pads are asbestos-free
- There are no ozone-damaging CFCs in our polyurethane products (such as the foam padding in seats, armrests and steering wheels)
- Many of our plants have passed the stringent ISO 14001 test – commonly known as the environmental ISO

MECHANICAL FEATURES AND TECHNICAL DATA

Engine:

- 2.2 MZR-CD Diesel
- 2184cc in-line 4-cylinder, 16-valve, DOHC, front-mounted, developing 173ps (127kW) at 3500rpm and 400Nm at 2000rpm
 - CO₂ emissions of 199g/km (EC Stage V)
 - Powertrain Control Module (PCM)
 - Battery – 80Ah
 - Alternator – 12V-100A
 - Diesel Particulate Filter

Active Torque Control Coupling 4WD System:

- By monitoring the difference in speed between front and rear axles, the available 4-wheel drive system automatically detects when the front wheels start to lose grip. The system then continuously redistributes up to 50% of torque to the rear wheels, thereby ensuring optimal traction

Transmission:

- 6-speed manual

Body:

- Self-supporting rigid and torsion-resistant all-steel body with defined crush zones for the front and rear sections, stable passenger safety cell with side impact reinforcement in the doors
- Mazda Advanced Impact Distribution and Absorption System designed to secure the critical interior space in the event of an accident
- Supplementary Restraint System (SRS) comprising central control unit and crash sensors, seatbelt pre-tensioners, load-limiters and airbag system

Chassis and Suspension:

- Front: Independent suspension with MacPherson struts and 6-point rubber mounting system
- Rear: Multi-link suspension with monotube dampers and low-mounted springs to maximise load compartment space

Brake System:

- Hydraulic, diagonally divided dual-circuit system with power brake unit
- Anti-lock Braking System (ABS) with Electronic Brake-force Distribution (EBD) and Emergency Brake Assistance (EBA)
- Front: 320mm ventilated disc brakes
- Rear: 325mm ventilated disc brakes

Engine Type	2.2 MZR-CD Diesel
Displacement (cc)	2184
Bore x stroke (mm)	86.0 x 94.0
Valves per cylinder	4
Maximum output [ps (kW) / rpm]	173 (127) / 3500
Maximum torque (Nm / rpm)	400 / 2000
Compression ratio	16.3

TECHNICAL DATA

Transmission		2.2 MZR-CD Diesel
Type		6-speed manual
Drive system		4WD
Gear ratios:	1st	3.818
	2nd	2.045
	3rd	1.290
	4th	0.926
	5th	0.853
	6th	0.711
	Reverse	4.139
Final gear ratio:	1st-4th	4.187
	5th, 6th and reverse	3.526

Steering

Steering gear	Electric hydraulic
Minimum turning circle (wall-to-wall) (m)	6.1

Performance and Economy

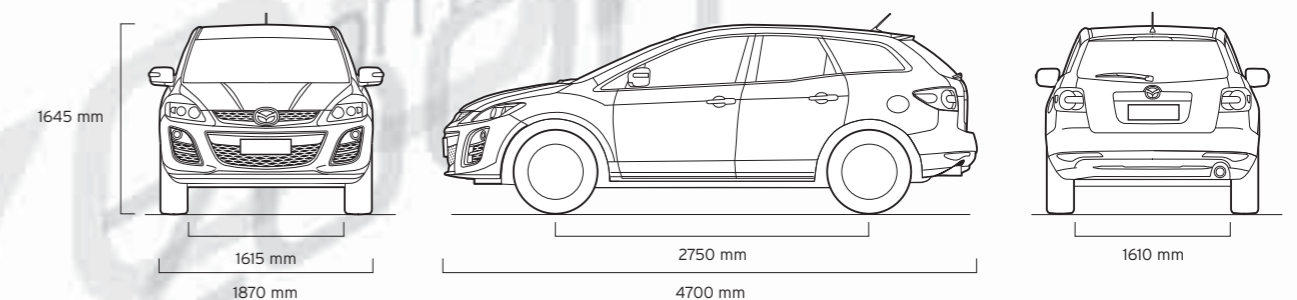
Acceleration (0-62mph in sec)	11.3	
Top speed (mph)	124	
Fuel consumption ¹⁾ [mpg (l/100km)]:	Urban	31.0 (9.1)
	Extra Urban	42.8 (6.6)
	Combined	37.7 (7.5)
CO ₂ emissions ²⁾ (g/km)	199	
EC emission level	Euro Stage V	
Recommended fuel	Diesel	
Fuel tank capacity (litres)	69	

Dimensions and Weights

Overall length / width / height (mm)	4700 / 1870 / 1645	
Ground clearance (mm) between the axles – unladen	207	
Front track / Rear track (mm)	1615 / 1610	
Wheelbase (mm)	2750	
Front headroom / leg room / shoulder room (mm)	1009 / 1059 / 1472	
Rear headroom / leg room / shoulder room (mm)	998 / 925 / 1417	
Cargo volume, acc. to VDA (l):	5-seat mode	455
	2-seat mode	774
Ventilated front disc diameter (mm)	320	
Ventilated rear disc diameter (mm)	325	
Kerb weight (kg) incl. driver (75kg)	1865	
Permitted gross vehicle weight (kg):	Total	2430
	Front / rear	1280 / 1150
Permitted axle load, front / rear (kg)	1304 / 1227	
Towing capacity (kg):	Unbraked	750
	Braked ²⁾	1800
Maximum roof load (kg)	100	

¹⁾ All fuel consumption and CO₂ emissions tests are carried out in accordance with 80/1268/EC as amended by 2004/3/EC.

²⁾ Towing capacity is based on a 12% gradient and tested in accordance with 92/21/EEC as amended by 95/48/EC.



EQUIPMENT

Safety and Security		Mazda CX-7
Mazda Advanced Impact Distribution and Absorption System engineered 'triple H' body structure to help protect occupants from impact forces	●	
Supplementary Restraint System (SRS) – Central control unit and crash sensors, front seatbelt pre-tensioners, load-limiters and airbag system	●	
Four-Wheel Anti-lock Braking System (4W-ABS) with Electronic Brake-force Distribution (EBD) and Emergency Brake Assistance (EBA)	●	
Dynamic Stability Control (DSC) with Traction Control System (TCS)	●	
Rear Vehicle Monitoring system (RVM):	●	
Radar-based system which provides assistance whilst changing lanes and combines a blind spot monitoring system. Effective at speeds above 40mph		
Emergency Stop Signal system (ESS):	●	
Automatic activation of flashing hazard lights when emergency braking is applied		
Active Torque Split 4-Wheel Drive System	●	
Dual front airbags	●	
Front side airbags	●	
Front and rear curtain airbags	●	
Driver and passenger seatbelt reminder system with audible 'unbuckle' warning	●	
Seatbelts:	●	
Front, 3-point (ELR) x 2 with pre-tensioners		
Rear, 3-point (ELR)	●	
ISOFIX child seat anchorage; attached to outer rear seats	●	
Thatcham Category 1 alarm and immobiliser	●	

Additional Safety and Security Options

Passenger airbag cut-off switch		
Baby and child seats:		
Baby Safe Plus (up to 13kg)		Please contact your dealer for further information and availability.
ISOFIX Duo Plus (9-18kg)		
Lord Plus (9-18kg)		
Kid Plus (15-36kg)		
Child seat pillow for ISOFIX Duo Plus		
Child seat pillow for Lord Plus		

Exterior

Tyres and wheels:	235/55 R19 with 7.5JJ 19" 5x2-spoke alloy wheels	●
Temporary size spare wheel		●
Metallic / Mica paint		○
Bumpers, front and rear:	Body colour	●
Lower grille:	Chrome finish	●
Lower door mouldings:	Chrome finish	●
Rear roof spoiler:	Body colour	●
Door handles:	Chrome finish	●
Tailgate handle:	Body colour with chrome finish insert	●
Privacy glass for rear windows		●
Wipers:	Front automatic rain-sensing	●
	Rear, adjustable speed with intermittent wipe	●
Headlights:	Xenon, with automatic headlight levelling and cleaning	●
Automatic dusk-sensing lights		●
Front fog lights		●
Rear fog lights		●
Rear brake light, high-mounted		●
Door mirrors:	Power-operated and heated, foldable, body colour housings, turning signal lights, driver's wide angle	●

● = Standard; ○ = Optional.

EQUIPMENT

Additional Exterior Options		Mazda CX-7
Tyres and wheels:	225/40 R19 with 8.0JJ 19" 5x3-spoke alloy wheels	
Rear bumper step protector		
Underbody garnish:	Front	
	Rear	
Mudflaps:	Front with chrome moulding	
Parking Distance Sensors	Front and rear	
Roof carrier system:	Roof carrier, base	
	Attachment for skis / snowboards	
	Attachment for bicycles	
	Small roof box	
	Large roof box	
Tow bar:	Detachable	
	Attachment for bicycles	
	Tow bar harness (available in 7-pin and 13-pin)	

Please contact your dealer for further information and availability.

Comfort and Convenience

Remote central locking with deadlocking (with jack-knife type retractable key)		●
Power steering:	Electric hydraulic	●
Cruise control:	Steering wheel-operated	●
Electric windows:	Front and rear, with one-touch auto down and up	●
Air conditioning:	Climate control	●
Sunvisors:	Driver's with covered vanity mirror, illumination and ticket holder	●
	Passenger's with covered vanity mirror and illumination	●

Interior Features

Interior Features		Maxda CX-7
Seats and integral head restraint:	Driver's and passenger's power adjustment	●
	Driver's seat memory function	●
	Driver's lumbar adjustment	●
	Heated front seats	●
	Leather trim*	●
Rear seats:	60 / 40 'Karakuri' fold-flat seat system	●
	Centre armrest with two cup holders	●
Steering wheel:	Leather-wrapped	●
	Tilt and height adjustment	●
Shift knob:	Leather-wrapped with silver finish insert	●
Door inner handles:	Front and rear, bright	●
Centre panel surround:	Piano Black finish	●
Scuff plates:	Front and rear standard scuff plates	●
Hand brake:	Leather-covered	●
Grab handles:	Front passenger's and two rear with coat hooks	●
Audio systems:	AM/FM modular radio and premium Bose® Centerpoint® surround sound system (includes nine speakers with approximately 240 watts of amplification) and 6-CD changer	●
	Steering wheel-mounted remote audio controls	●
	Auxiliary jack and power outlet (located in centre console)	●
Satellite navigation system:	4.1" full-colour display	●
Rear-view camera		●
Integrated Bluetooth® system**		●

● = Standard.

* Leather refers to centre facing and side supports.

** Please refer to www.mazdahandsfree.com for phone compatibility.

EQUIPMENT

Interior Features		Maxda CX-7
Meter set:	Multi Information Display (MID) including trip computer, digital tachometer, fuel gauge, and water and exterior temperature gauges	●
	Tyre pressure monitoring system	●
	Blackout-finish dials	●
Digital clock		●
Panel light control with dimmer		●
Audible headlight on reminder		●
Front centre console with storage box		●
Further storage spaces:	Glovebox	●
	Seatback pocket (passenger side)	●
	Door pockets (front doors only)	●
Dome interior courtesy light, with integral spotlight		●
Luggage compartment:	Light	●
	Storage box	●
	Tonneau cover	●
Rear heater ducts		●
Pollen filter		●

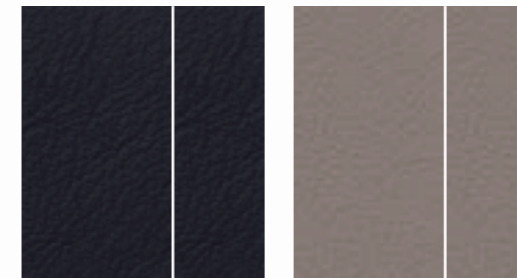
Additional Interior Options		
Scuff plates:	Stainless steel, with 'CX-7' logo, front and rear	Please contact your dealer for further information and availability.
	Stainless steel, front and rear, illuminated front only	
Audio systems:	iPod connector	
Front and rear floor mats:	Carpet floor mat, 'Premium', black, with 'CX-7' logo	
Accessory power socket		
Luggage compartment:	Boot liner	
	Boot mat with rear bumper protector	
	Boot net	
	Boot room organiser	
	Dog guard	
Safety kit		

● = Standard.

COLOURS AND SEAT TRIMS

Model	Black leather	Stone leather
Trim		
Solid Body Colours		
Brilliant Black (A3F)	■	■
Mica and Metallic Body Colours		
Aluminium Silver Metallic (38P)	■	■
Copper Red Mica (32V)	■	■
Crystal White Pearlescent (34K)	■	■
Galaxy Grey Mica* (32S)	■	■
Metropolitan Grey Mica* (36C)	■	■
Stormy Blue Mica (35J)	■	■

■ = Available.
 *Limited availability, please consult your dealer.
 *Available from October production.



Black leather

Stone leather



Brilliant Black

Aluminium Silver Metallic

Copper Red Mica

Crystal White Pearlescent



Metropolitan Grey Mica

Stormy Blue Mica

Manufacturer's Warranty – 3-Year Cover

Every Mazda is designed and built to the highest standards of performance, comfort and reliability. For your further reassurance, Mazda also provides a full 3-year / 60,000 mile warranty cover, Mazda European Assistance¹⁾, 3-year paintwork warranty and a 12-year anti-perforation warranty.

Mazda Momentum – New Vehicle Extended Warranty

At any time during the manufacturer's warranty period, you may purchase a Mazda Momentum extended warranty package. Three options are available. Your Mazda dealer will be pleased to provide you with details.

Free Mazda Accident Aftercare

Mazda Accident Aftercare is designed to assist you following a road traffic accident. Should you ever be involved in an accident or need to make an insurance claim, 'Mazda First' will liaise directly with your insurer to process the claim and ensure that your vehicle is repaired at a Mazda approved bodyshop using only genuine Mazda parts, in addition to other benefits such as providing you with a free courtesy car and maintaining your Mazda warranties.

Mazda Contract Hire*

As a Mazda corporate customer, you'll find that Mazda vehicles are designed to fulfil the diverse needs of a modern company. Our corporate service offers low running costs and market-driven residual values, resulting in extremely competitive ownership costs. To find out more about the benefits of Mazda Contract Hire, please speak to your Mazda dealer or phone 08456 024 104.

Digital Service Record

The Mazda Digital Service Record (DSR) system provides increased security against counterfeit service documents and odometer tampering, and makes it easy to keep the service history up to date. Stored on a central database, the DSR replaces the traditional paper service book and ensures a secure, accurate and permanent service history for the life of the vehicle.

Your Mazda dealer:

Mazda Motors UK Limited reserves the right to introduce changes in specification and equipment due to its ongoing product development. Colour and trim samples shown in this brochure may vary from the actual colours because of the limitations in the printing process. It is recommended that you consult your Mazda dealer when referring to these.

¹⁾ Please visit www.mazda.co.uk/owning/owner-benefits-new/ for more details on your Mazda European Assistance coverage.

Bose® and Centerpoint® are registered trademarks of Bose Corporation in the U.S. and other countries. Used with permission.

The Bluetooth® word mark and logos are owned by the Bluetooth SIG, Inc. and any use of such marks by Mazda Motor Company is under licence. Other trademarks and trade names are those of their respective owners.

*Mazda Contract Hire is provided by ALD Automotive Ltd, trading as Mazda Contract Hire, Oakwood Park, Lodge Causeway, Fishponds, Bristol, BS16 3JA. Guarantees / Indemnities may be required. Business users only. ALD Automotive Ltd is incorporated in the UK and regulated by the Financial Services Authority in respect of general insurance products.

May 2011.

Internet: www.mazda.co.uk
Mazda Helpline: 08457 48 48 48



Part No. MCAG1056 05/11 (BJN 307814/GBR en/V1)

