

NISSAN QASHQAI AND QASHQAI+2



[Introduction](#) | [Exterior design](#) | [Interior design](#) | [Versatility](#) | [Technology](#) | [Performance](#) | [Safety](#) | [Accessory](#) | [Grade and dimensions](#)

[Print](#) | [Close](#)



A silver Nissan Qashqai is shown from a front-three-quarter view on a rooftop parking lot. The background features a city skyline with several skyscrapers under a bright sky. On the right side of the image, there are large, dynamic splashes of red and blue paint. The overall aesthetic is modern and urban.

■ THE MASTERED URBANPROOF CROSSOVER ■

It came. It proved. It conquered. New QASHQAI and QASHQAI+2: the ultimate crossovers master the city.

[Introduction](#) | [Exterior design](#) | [Interior design](#) | [Versatility](#) | [Technology](#) | [Performance](#) | [Safety](#) | [Accessory](#) | [Grade and dimensions](#)

[Print](#) | [Close](#)



REDESIGN THE URBAN LANDSCAPE

Forget city style; this is street art - with raised fenders for more wheel-space and new top-line tail-lights with LEDs.



INFILTRATE THE STREET

Clear the way for the new QASHQAI: the nimble crossover with a new super-sleek dynamic look and all the strengths & agility of an SUV design. With a high driving position for a broader vista and improved acoustics for a smoother, quieter drive: it's an urban legend in its own time.



JOIN THE NEW MOVEMENT

Roll 'em out quietly and confidently thanks to optimised aero-acoustics, speed limiter and integrated cruise control. Smooth. Streetwise. Mastered. New QASHQAI reclaims the city.

QASHQAI PROOF #15
DON'T CRACK UP NOW.
SUN ROOF CAN WITHSTAND THE WEIGHT
OF A BEAR WITHOUT BREAKING.*

Get to know more at: www.nissan.co.uk/proveit

* No bears were harmed or inconvenienced by QASHQAI testing - they never made it onto the roof... This was just one extreme potential scenario considered during sunroof testing - relying on an equivalent weight.



MAKE YOUR PRESENCE FELT

Lighten the atmosphere with natural stone-colour leather seats, new quality trims and a panoramic glass roof.



Electric sunshade:
Strict intimacy on demand for shadier moments.



New combimeter:
Ultra-clear, chrome-trimmed dials and a large, central LCD display for improved readability.



INCREASE ■ ■ YOUR DENSITY

With an extra row of two folding seats and lots of extra storage space, QASHQAI+2 is even more inviting.





Armrest and table
Fold down the 2nd row centre seat and it becomes an armrest, with two cup holders and a concealed storage box for hiding valuable items. You can also access the 12V power socket.



Storage with a plus
When it's upright, the back of the 2nd row armrest provides a handy storage box for your 3rd row passengers.

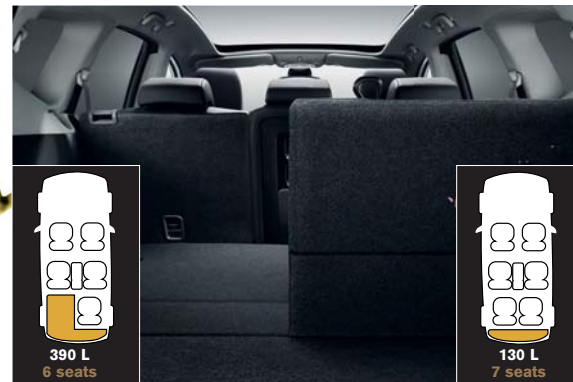
+2





+2 COVER MORE GROUND

Fold the seats down separately or together to organise by zone or create a free-for-all loading area on a long, flat floor. Now that's real crossover thinking.



QASHQAI+2 offers an amazing variety of seating and cargo combinations and gives you a van-like 1520 litres of space when the 2nd and 3rd rows are down.





Ingenious cargo divider

When the 3rd row seats are upright, the divider flips up so that you can stow away the pull-out tonneau cover and create even more luggage space.



Love to take everything

The huge 14 litre glovebox offers lots of room and can be cooled by the air conditioning.



Love the thoughtfulness

The centre console holds up to eight of your favourite CDs plus two drinks cans. And the sliding armrest has storage space underneath.



And there's more!

Yes, there's even more storage space in the rear door pockets. And they've stretched for QASHQAI+2, allowing more room for drinks and trinkets.

That's neat.

The two front seatback pockets provide your 2nd row passengers with space for magazines, CDs or whatever else they like to take with them.



MASTER YOUR PERFORMANCE

See more, hear more, know more with Nissan Connect, your fully-integrated navigation, communication and audio-entertainment system. You've got the kit; now go explore the urban jungle.



Plan your journey with a 5" touch-screen and display optimal routes, music and info-alerts and even your phone book and personal files.

Track your progress with high-resolution 2D or 3D maps and auto-zoom on key targets. With voice guidance in 9 languages across Europe.

Play CDs in any format, stream audio via Bluetooth® or opt for the radio.



Boost your assets with the Bose® Sound System available on Tekna grade designed for mind-blowing music quality all-round. Seven strategically placed speakers and a digital amplifier guarantee the depth, space and presence of a live performance.



Access your favourites on your iPod, MP3 player or USB stick via Nissan Connect's high-resolution touch screen.



Open your network thanks to Bluetooth® hands-free connectivity.





GO LIGHTLY

Tougher, leaner, keener with brand new headlights and an athletic front grille: the mastered crossover is in unbeatable shape.



QASHQAI and QASHQAI+2 get their zest for driving from lightweight aluminium 2.0 140PS petrol or state-of-the-art 2.0 dCi 150PS engines. For 2 wheel drive versions, there's also a choice of 1.6 117PS petrol or the highly efficient 1.5 dCi 110PS engine. With six-speed gearboxes on all engines (except 1.6 petrol), the response is exciting yet quiet and refined.

If you want to take it easy, there's CVT available with the 2.0 litre petrol and a six-speed auto transmission with the 2.0 dCi. If you're feeling adventurous, you can opt for ALL MODE 4x4[®] with either 2.0 petrol or 2.0 dCi engines*. It all depends on your urge.

With a new flat base and improved aerodynamics, new QASHQAI is cleaner and more fuel-efficient – delivering 57.6mpg (combined) thanks to the strength of the diesel engine on the 1.5 dCi PURE DRIVE 130g variant.



Vehicle shown is not UK specification.

** on selected grades*



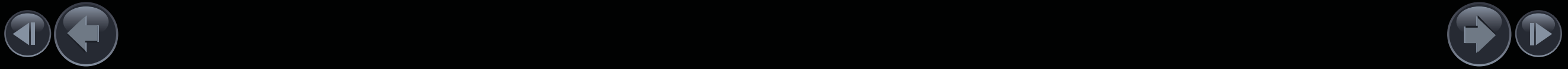
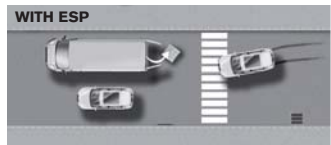
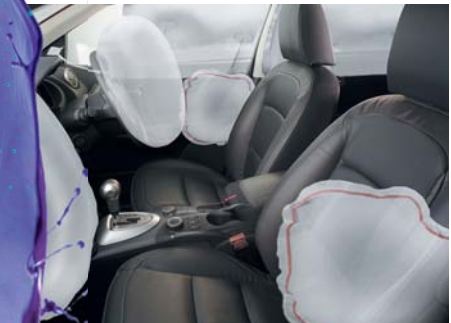
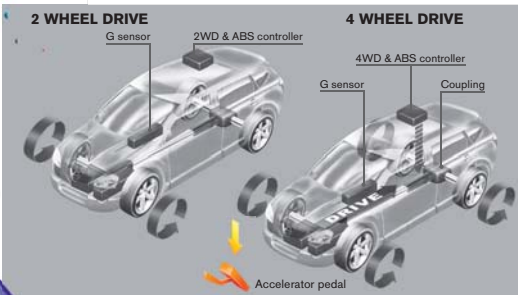


GO SURELY

- > **Large diameter brakes** with ABS and EBD provide class-leading, progressive stopping power.
- > **Independent rear multi-link suspension** allows secure cornering and ensures stability at high speeds.
- > **Six airbags are standard**, along with front seatbelt pre-tensioners.
- > **Intelligent protection:** In a rear impact, the front seat active headrests move forward to reduce the risk of whiplash injury.

> **ALL MODE 4x4[®]** uses electronic sensors and controls to measure wheel spin and distribute torque automatically, with up to 50% to the rear wheels. Combined with ESP it's even able to control each wheel independently.

> **Cope with emergencies confidently.** The latest generation ESP helps keep you on course, even when making evasive manoeuvres.



PERFECT ■ THE ART

Personalise your QASHQAI with our new and expanded range of Nissan Genuine Accessories. For further details, please ask your dealer for the new QASHQAI Accessories brochure.



Easy Media Player

This portable entertainment system caters to all tastes with one or two 7" screens and multiple connections (MP3, USB, video game console...). A stress-free journey guaranteed.



Front styling bars and chrome fog lamp rings
Add street-sport style with these shapely styling bars and give your QASHQAI a brilliant edge with a pair of chrome fog lamp rings.



Chrome mirror caps
Sharpen your reflection with chromed door mirror caps.

Accessories :

Tribal sticker, front park sensors, front styling plate, crossbars for roofrails, wind deflectors, 18" alloy wheels, chrome mirror caps.



CHOOSE YOUR NEW QASHQAI:

VISIA

Enter into the stylish crossover world.

- 16" Alloy wheels
- Air-conditioning
- CD radio with 4 speakers & aux jack
- Bluetooth®
- Front & rear electric windows
- 6 Airbags
- ISOFIX
- ABS with EBD and Brake Assist
- Remote central locking

ACENTA

Refined atmosphere and innovative features in the crossover benchmark.

Additional to Visia

- 17" Alloy wheels
- Dual zone climate control
- Rain-sensing wipers
- Automatic lighting system
- Ultrasonic rear park system (RPS)
- USB input
- Cruise control with speed limiter

n-tec

Attractive crossover with stand-out design and friendly technology.

Additional to Acenta

- 18" 'Onyx' alloy wheels
- Nissan Connect
- Colour reversing camera (in lieu of RPS)
- Panoramic glass roof
- Roof rails
- Rear privacy glass

Option:

- Chrome Pack

TEKNA

The state-of-the-art urban crossover.

Additional to n-tec

- 18" 'Pewter' alloy wheels
- Full leather upholstery
- Heated front seats
- Intelligent key
- BOSE 7 speaker system
- Xenon headlamps with headlamp washers

QASHQAI+2 ONLY

VISIA:

- Rear privacy glass

ACENTA:

- Additional to Visia
- Panoramic glass roof

Wheels



16" Wheel cover Pure Drive 130g 16" alloy 17" alloy 18" 'Onyx' alloy 18" 'Pewter' alloy

DIMENSIONS



COLOURS AND TRIMS



NEW Mineral Grey /M KAQ



NEW Magnetic Red /M NAJ



NEW Gun Metallic /M KAD



Blade Silver /M KY0

3 NEW COLOURS



Café Latte /M C30



Nightshade /M GAB



Cayman Blue /M BW9



Pearl Black /M Z11

Solid /S - Metallic /M

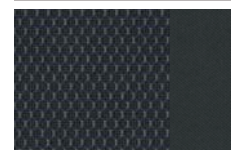


Flame Red /S Z10



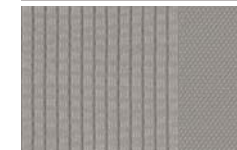
Arctic White /S 326

VISIA

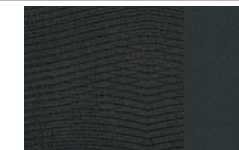


Charcoal

ACENTA & n-tec

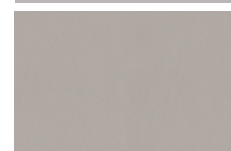


Stone

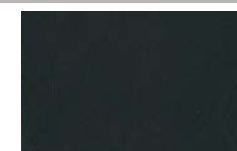


Graphite

TEKNA



Stone Leather



Graphite Leather



All four QASHQAI grades feature a level of specification that is far from 'standard'. Whatever the grade, it has the power, performance and equipment to take on – and win in – the modern world; the urban world.



QASHQAI GRADES

VISIA

TECHNOLOGY

- Chrome-trimmed LCD combimeter
- Drive computer
- Audio with Bluetooth compatibility
- Diesel Particulate Filter*

COMFORT AND CONVENIENCE

- Front and rear power windows with one-touch and anti-trap device (driver's side only)
- Electrically adjustable and heated door mirrors
- Tilt and telescopic steering wheel adjustment
- Electric speed-sensitive power steering
- Front 12v power socket
- Remote audio control
- Ambient footwell lighting

HEATING, VENTILATION AND VISIBILITY

- Manual air conditioning
- Pollen filter
- 2 Speed wiper with variable intermittent
- Rear wiper with intermittent

SEATING, TRIM AND STORAGE

- Charcoal cloth trim
- Height adjustable driver seat
- 14-Litre glovebox with lamp and damped opening
- Front centre console and armrest
- Front cupholders x2
- Asymmetrical rear bench (60:40)
- 410 Litre boot space (VDA)

SAFETY

- ESP
- ABS with Brake Assist and EBD
- Driver, passenger, side and curtain airbags
- Active front headrests with height adjustment
- Front seat belts with load limiter and pretensioner
- Front seat belt height adjustment
- 3 Rear headrests
- 3 x 3 point rear seatbelts with ELR
- ISOFIX childseat anchorage points (rear)
- Rear door child locks

SECURITY

- Remote central locking with superlocking
- Speed-sensitive autolock function
- Engine immobiliser
- Ultrasonic alarm system (2.0 petrol and 2.0 dCi only)

STYLING

- 16" Alloy wheels**
- Body-coloured front and rear bumpers with black protective cladding
- Black door mirrors and handles
- Black honeycomb front grille

IN-CAR ENTERTAINMENT

- CD radio with 4 speakers
- Aux socket for MP3 players

OPTIONS AT EXTRA COST

- Metallic paint
- Stop/Start System (1.6 petrol only)

ACENTA

ADDITIONAL TO VISIA GRADE

TECHNOLOGY

- Rain-sensing wipers
- Auto lighting system
- Cruise control with speed limiter

COMFORT AND CONVENIENCE

- Electric folding door mirrors
- Ultrasonic rear park system (RPS)
- Map reading lamp
- Rear reading lamp

HEATING, VENTILATION AND VISIBILITY

- Dual zone climate control air conditioning with glovebox cooler

SEATING, TRIM AND STORAGE

- Graphite or Stone cloth trim
- Driver's seat lumbar support
- Driver and passenger front seatback pockets
- Leather steering wheel

- Leather gear knob (manual only)
- Rear seat armrest
- Rear cupholders (in armrest) x2

SAFETY

- Front fog lamps

SECURITY

- Ultrasonic alarm system (1.6 petrol and 1.5 dCi)

STYLING

- 17" Alloy wheels
- Body-coloured door handles and mirrors

IN-CAR ENTERTAINMENT

- 2DIN CD player with USB, iPod and aux inputs
- Audio system with 6 speakers

OPTIONS AT EXTRA COST

- Metallic paint
- Stop/Start System (1.6 petrol only)

n-tec

ADDITIONAL TO ACENTA GRADE

TECHNOLOGY

- Nissan Connect
- Colour reversing camera (in lieu of RPS)

STYLING

- 18" 'Onyx' alloy wheels
- Panoramic glass roof with one-touch shade
- Rear privacy glass
- Satin silver roof rails
- Aluminium pedals

OPTIONS AT EXTRA COST

- Metallic paint
- Chrome Pack (chrome fog lamp rings, door handles & side strips, front door entry guards, tailgate entry guard & carpet mats)
- Stop/Start System (1.6 petrol only)

TEKNA

ADDITIONAL TO n-tec GRADE

SEATING, TRIM AND STORAGE

- Graphite or Stone leather trim
- Heated front seats

STYLING

- 18" 'Pewter' alloy wheels

SAFETY

- Xenon clear lens headlamps
- Headlamp washers

SECURITY

- Intelligent key

IN-CAR ENTERTAINMENT

- 7-Speaker Bose® audio system

OPTIONS AT EXTRA COST

- Metallic paint
- Stop/Start System (1.6 petrol only)

*The 1.5dCi & 2.0dCi engines fitted to QASHQAI include a diesel particulate filter (DPF) to reduce emissions and help protect the environment. The functionality of a DPF may not be suitable for all customers. If your journeys are predominantly urban or low speed, a model without a DPF may be a more suitable alternative.

** Except Visia PURE DRIVE 130g variant which comes with 16" steel wheels

		1.6 petrol	1.6 petrol with Stop/Start System	2.0 petrol		1.5 dCi with DPF*	1.5 dCi (Eco) with DPF*	2.0 dCi with DPF*			
MODEL		2WD		2WD	2WD	4WD	2WD	2WD	2WD	4WD	4WD
Seating capacity	persons	5									
Available grades		All				n-tec and Tekna	All	Visia PURE DRIVE 130g	All	n-tec and Tekna	n-tec and Tekna
ENGINE											
Engine code		HR16DE		MR20DE		K9K-1.5		K9K-1.5		M1D-2.0	
No. of cylinders, configuration		4, in line		4, in line		4, in line		4, in line		4, in line	
Valves per cylinder		4		4		2		2		4	
Engine capacity	cm ³	1598		1997		1461		1461		1995	
Bore x stroke	mm	78x83.6		84x90.1		76x80.5		76x80.5		84x90	
Max. engine power ¹⁾	kW(PS)/rpm	86(117)/6000		104(140)/6000		81(110)/4000		81(110)/4000		110(150)/4000	
Max. torque ¹⁾	Nm/rpm	158/4400		196/4800		240/1750		240/1750		320/2000	
Compression ratio		10.7		10.2		15.3		15.3		15.6	
Fuel type		Petrol		Petrol		Diesel		Diesel		Diesel	
Fuel tank capacity	l	65									
Ignition system/ Intake system (Diesel)		Electronic distributor - less type		Electronic distributor - less type		Turbo-Charger + Intercooler		Turbo-Charger + Intercooler		Turbo-Charger + Intercooler	
Fuel supply		Multi Point Injection		Multi Point Injection		Common Rail Direct Injection		Common Rail Direct Injection		Common Rail Direct Injection	
Emission control system		3-Way catalyst		3-Way catalyst		Oxidation catalyst		Oxidation catalyst		Oxidation catalyst with Diesel Particular Filter	
Emissions level		EU5									
DRIVE TRAIN											
Transmission type		5-Speed manual		6-Speed manual		CVT		CVT		6-Speed manual	
Clutch type	Manual	Dry plate mechanical		Dry plate mechanical		Torque converter with lock-up		Torque converter with lock-up		Torque converter with lock-up	
	Auto										
Gear ratio	1st	3.727		3.727		2.349		2.349		3.727	
	2nd	2.048		2.105		↕		↕		1.947	
	3rd	1.393		1.519						1.950	
	4th	1.097		1.171		1.322		1.322		1.193	
	5th	0.892		0.914		0.975		0.975		0.850	
	6th	-		0.767		0.763		0.763		0.673	
	Reverse	3.545		3.687		0.638		0.638		0.596	
	Final Drive	4.214		4.438		1.750		1.750		3.641	
Driven wheels		2WD		2WD		2WD		4WD (full time) / 2WD		2WD	
CHASSIS											
Suspension	front	McPherson Strut									
	rear	Independent Multi-link									
Steering		Rack and Pinion, power assisted									
Braking system		Discs front and rear (Ventilated Discs front), power assisted, ABS incl EBD and Brake Assist									
Stability control system		Electronic Stability Program (ESP)									
Wheel size		16x6.5JJ, 17x6.5JJ, 18x6.5JJ					16x6.5JJ		16x6.5JJ, 17x6.5JJ, 18x6.5JJ		
Tyre size		215/65R16, 215/60R17, 215/55R18					215/65R16		215/65R16, 215/60R17, 215/55R18		

1) In accordance with 1999/99/EC.

*The 1.5 dCi & 2.0 dCi engines fitted to QASHQAI include a diesel particulate filter (DPF) to reduce emissions and help protect the environment. The functionality of a DPF may not be suitable for all customers.

If your journeys are predominantly urban or low speed, a model without a DPF may be a more suitable alternative.

QASHQAI

		1.6 petrol	1.6 petrol with Stop/Start System	2.0 petrol				1.5 dCi with DPF*	1.5 dCi with DPF (Eco)*	2.0 dCi with DPF*			
MODEL			2WD	2WD	2WD	4WD	2WD	2WD	2WD	4WD	4WD		
Seating capacity	persons	5											
Available grades		All	All	All	n-tec and Tekna	All	Visia PURE DRIVE 130g	All	n-tec and Tekna	n-tec and Tekna			
WEIGHTS & DIMENSIONS													
Transmission type		5-Speed manual	6-Speed manual	CVT	CVT	6-Speed manual	6-Speed manual	6-Speed manual	6-Speed manual	6-Speed automatic			
Kerb weight min./max. ²⁾	kg	1297/1392	1312/1407	1356/1437	1378/1459	1454/1535	1418/1482	1503/1573	1568/1639	1604/1674			
Gross Vehicle Weight	kg	1830	1960	1960	1930	2085	2085						
Max. pay load ²⁾	kg	415	415	415	415	415							
Max. axle weight (PAW)	front	kg	1150	1150	1150	1150	1150	1150	1150				
	rear	kg	1000	1100	1100	1100	1100	1100	1100				
Max. trailer weight	braked	kg	1200	1400	1200	1200	1400	1350					
	unbraked	kg	685	685	685	740	740	750	750				
Max. vert. load on coupling point	kg	75											
Max. roof Load	kg	75											
Overall length	mm	4330											
Width excluding mirrors	mm	1780											
Width including mirrors	mm	2120											
Overall height (with roof rails)	mm	1615 (1622)											
Wheelbase	mm	2630											
Track	front	mm	1540										
	rear	mm	1550										
Luggage space	max. length	mm	900										
	max. width	mm	1100										
	max. height to p/shelf	mm	505										
Luggage capacity	VDA	l	410										
	max. with folded seats (VDA)	l	860										
Min. turning circle (kerb to kerb)	m	10.6											
PERFORMANCE													
Fuel consumption ³⁾	Urban cycle	l/100 km (mpg)	7.9 (35.8)	7.5 (37.7)	10.4 (27.2)	10.1 (28.0)	10.6 (26.6)	6.3 (44.8)	5.9 (47.9)	7.5 (37.7)	7.5 (37.7)	9.1 (31.0)	
	Extra-urban	l/100 km (mpg)	5.2 (54.3)	5.0 (56.5)	6.3 (44.8)	6.2 (45.6)	6.5 (43.5)	4.6 (61.4)	4.4 (64.2)	5.0 (56.5)	5.2 (54.3)	5.8 (48.7)	
	Combined	l/100 km (mpg)	6.2 (45.6)	5.9 (47.9)	7.8 (36.2)	7.6 (37.2)	8.0 (35.3)	5.2 (54.3)	4.9 (57.6)	5.9 (47.9)	6.0 (47.1)	7.0 (40.4)	
CO2 mass emission (combined)	g/km	144	139	184	179	189	137	130	155	159	184		
Max. speed	km/h (mph)	181 (113)	181 (113)	195 (121)	183 (114)	181 (113)	177 (110)	176 (109)	194 (121)	193 (120)	188 (117)		
Acceleration 0-62mph (0 - 100 km/h)	sec	11.9	11.9	10.1	10.7	11.3	12.4	12.7	9.5	9.9	11.0		

²⁾ Figures in accordance with EC Directive. Kerb weight condition is without driver and including coolant, oils, fuel, spare wheel and tools. Payload will be reduced depending on the options and/or accessories installed.

³⁾ In accordance with 1999/100/EC. (Optional equipment, maintenance, driving behaviour, road and weather conditions may affect the official results)

* The 1.5 dCi & 2.0 dCi engines fitted to QASHQAI include a diesel particulate filter (DPF) to reduce emissions and help protect the environment. The functionality of a DPF may not be suitable for all customers. If your journeys are predominantly urban or low speed, a model without a DPF may be a more suitable alternative.

All four QASHQAI+2 grades feature a level of specification that is far from 'standard'. Whatever the grade, it has the power, performance and equipment to take on – and win in – the modern world; the urban world.



QASHQAI+2 GRADES

VISIA

TECHNOLOGY

- Chrome-trimmed LCD combimeter
- Drive computer
- Audio with Bluetooth compatibility
- Diesel Particulate Filter*

COMFORT AND CONVENIENCE

- Front and rear power windows with one touch and anti-trap device (driver's side only)
- Electrically adjustable and heated door mirrors
- Tilt and telescopic steering wheel adjustment
- Electric speed-sensitive power steering
- Front 12v power socket
- Remote audio control
- Ambient footwell lighting

HEATING, VENTILATION AND VISIBILITY

- Manual air conditioning
- Pollen filter
- 2 Speed wiper with variable intermittent
- Rear wiper with intermittent

SEATING, TRIM AND STORAGE

- Charcoal cloth trim
- Height adjustable driver's seat
- 14-Litre glove box with lamp and damped opening
- Front centre console and armrest
- Front cupholders x2
- Asymmetrical sliding 2nd row bench (60:40 split)
- Middle row seat backs with 40:20:40 split
- Middle row armrest with storage, cup holders and 12V power socket
- 450 Litre boot space (VDA) with 3rd row seats folded
- 1,520 Litre boot space (VDA) with 2nd and 3rd row seats folded
- Flat Fold rear seats with 50:50 split
- Underfloor storage / cargo divider

SAFETY

- ESP
- ABS with Brake Assist and EBD
- Driver, passenger, side and curtain airbags
- Active front headrests with height adjustment
- Front seat belts with load limiter and pretensioner
- Front seat belt height adjustment
- 3 rear headrests
- 5 x 3 point rear seatbelts with ELR
- ISOFIX childseat anchorage points (middle row)
- Rear door child locks

SECURITY

- Remote central locking with superlocking
- Speed sensitive autolock function
- Engine immobiliser
- Ultrasonic alarm system

STYLING

- 17" Alloy wheels on 2.0 engines
- 16" Alloy wheels on 1.6 and 1.5 dCi engines
- Body-coloured front and rear bumpers with black protective cladding
- Black door mirrors and handles
- Black honeycomb front grille
- Rear privacy glass

IN-CAR ENTERTAINMENT

- CD radio with 4 speakers
- Aux socket for MP3 players

OPTIONS AT EXTRA COST

- Metallic paint
- Stop/Start System (1.6 petrol only)

*The 1.5dCi & 2.0 dCi engines fitted to QASHQAI+2 include a diesel particulate filter (DPF) to reduce emissions and help protect the environment. The functionality of a DPF may not be suitable for all customers. If your journeys are predominantly urban or low speed, a model without a DPF may be a more suitable alternative.

ACENTA

ADDITIONAL TO VISIA GRADE

TECHNOLOGY

- Rain-sensing wipers
- Auto lighting system
- Cruise control with speed limiter

COMFORT AND CONVENIENCE

- Electric folding door mirrors
- Ultrasonic rear park system (RPS)
- Map reading lamp
- Rear reading lamp

HEATING, VENTILATION AND VISIBILITY

- Dual zone climate control air conditioning with glovebox cooler

SEATING, TRIM AND STORAGE

- Graphite or Stone cloth trim
- Driver's seat lumbar support
- Driver and passenger front seat-back pockets
- Leather steering wheel
- Leather gear knob (manual only)

SAFETY

- Front fog lamps

STYLING

- 17" Alloy wheels
- Panoramic glass roof with one-touch shade
- Body-coloured door handles and mirrors

IN-CAR ENTERTAINMENT

- 2DIN CD player with USB, iPod and aux inputs
- Audio system with 6 speakers

OPTIONS AT EXTRA COST

- Metallic paint
- Stop/Start System (1.6 petrol only)

n-tec

ADDITIONAL TO ACENTA GRADE

TECHNOLOGY

- Nissan Connect
- Colour reversing camera (in lieu of RPS)

STYLING

- 18" 'Onyx' alloy wheels
- Satin silver roof rails
- Aluminium pedals

OPTIONS AT EXTRA COST

- Metallic paint
- Chrome Pack (chrome fog lamp rings, door handles & side strips, front door entry guards, tailgate entry guard & carpet mats)
- Stop/Start System (1.6 petrol only)

TEKNA

ADDITIONAL TO n-tec GRADE

SEATING, TRIM AND STORAGE

- Graphite or Stone leather trim
- Heated front seats

STYLING

- 18" 'Pewter' alloy wheels

SAFETY

- Xenon clear lens headlamps
- Headlamp washers

SECURITY

- Intelligent key

IN-CAR ENTERTAINMENT

- 7-Speaker Bose® audio system

OPTIONS AT EXTRA COST

- Metallic paint
- Stop/Start System (1.6 petrol only)

QASHQAI+2

		1.6 petrol	1.6 petrol with Stop/Start System	2.0 petrol		1.5 dCi with DPF*	2.0 dCi with DPF*		
MODEL		2WD		2WD	4WD	2WD	2WD	4WD	4WD
Seating capacity	persons	7							
Available grades		All	All	n-tec and Tekna	All	All	n-tec and Tekna	n-tec and Tekna	
ENGINE									
Engine code		HR16DE	MR20DE	K9K-1.5	M1D-2.0				
No. of cylinders, configuration		4, in line	4, in line	4, in line	4, in line				
Valves per cylinder		4	4	2	4				
Engine capacity	cm ³	1598	1997	1461	1995				
Bore x stroke	mm	78x83.6	84x90.1	76x80.5	84x90				
Max. engine power ¹⁾	kW(PS)/rpm	86 (117)/6000	104 (140)/6000	81 (110)/4000	110 (150)/4000				
Max. torque ¹⁾	Nm/rpm	158/4400	196/4800	240/1750	320/2000				
Compression ratio		10.7	10.2	15.3	15.6				
Fuel type		Petrol	Petrol	Diesel	Diesel				
Fuel tank capacity	l	65							
Fuel Supply		Multi Point Injection	Multi Point Injection	Common Rail Direct Injection	Common Rail Direct Injection	Common Rail Direct Injection			
Emission control system		3-Way catalyst	3-Way catalyst	Oxidation catalyst	Oxidation catalyst	Oxidation catalyst with Diesel Particular Filter			
Emissions level		EU5							
DRIVE TRAIN		2WD	2WD	4WD	2WD	2WD	4WD	4WD	
Transmission type		5-Speed manual	6-Speed manual	CVT	6-Speed manual	6-Speed manual	6-Speed manual	6-Speed automatic	
Clutch type	Manual	Dry plate mechanical	Dry plate mechanical	Torque converter with lock-up	Dry plate mechanical	Dry plate mechanical	Dry plate mechanical	Torque converter with lock-up	
	Auto								
Gear ratio	1st	3.727	3.727	2.349 ↑ ↓ 0.394	3.727	3.727	3.727	4.199	
	2nd	2.048	2.105		1.947	1.950	1.950	2.405	
	3rd	1.393	1.519		1.322	1.193	1.193	1.583	
	4th	1.097	1.171		0.975	0.850	0.850	1.161	
	5th	0.892	0.914		0.763	0.673	0.673	0.855	
	6th	-	0.767		0.638	0.596	0.596	0.685	
	Reverse	3.545	3.687		1.750	3.687	3.641	3.641	3.457
	Final Drive	4.500	4.438		6.466	4.438	4.133	4.133	3.360
Driven wheels		2WD	2WD	4WD (full time) / 2WD	2WD	2WD	4WD (full time) / 2WD	4WD (full time) / 2WD	
CHASSIS									
Suspension	front	McPherson Strut							
	rear	Independent Multi-link							
Steering		Rack and Pinion, power assisted							
Braking system		Ventilated discs front and rear, power assisted, ABS incl EBD and Brake Assist							
Stability control system		Electronic Stability Program (ESP)							
Wheel size		16x6.5JJ, 17x6.5JJ, 18x6.5JJ							
Tyre size		215/65R16, 215/60R17, 215/55R18							

*The 1.5 dCi & 2.0 dCi engines fitted to QASHQAI+2 include a diesel particulate filter (DPF) to reduce emissions and help protect the environment. The functionality of a DPF may not be suitable for all customers. If your journeys are predominantly urban or low speed, a model without a DPF may be a more suitable alternative.

1) In accordance with 1999/99/EC.

QASHQAI+2

		1.6 petrol	1.6 petrol with Stop/Start System	2.0 petrol		1.5 dCi with DPF*	2.0 dCi with DPF*			
MODEL		2WD		2WD	4WD	2WD	2WD	4WD	4WD	
Seating capacity	persons	7								
Available grades		All		All	n-tec and Tekna	All	All	n-tec and Tekna	n-tec and Tekna	
WEIGHTS & DIMENSIONS										
Transmission type		5-Speed manual		6-Speed manual	CVT	6-Speed manual	6-Speed manual	6-Speed manual	6-Speed automatic	
Kerb weight min./max. ²⁾	kg	1404 / 1508	1419/1523	1476 / 1543	1583 / 1650	1511 / 1604	1631 / 1666	1696 / 1755	1732 / 1791	
Gross Vehicle Weight	kg	2072		2108	2215	2170	2255	2320	2356	
Max. pay load ²⁾	kg	565		565	565	565	565	565	565	
Max. axle weight (PAW)	front	kg	1175	1175	1175	1175	1175	1230	1230	
	rear	kg	1215	1215	1215	1215	1215	1260	1260	
Max. trailer weight	braked	kg	1200	1400	1200	1200	1400	1400	1350	
	unbraked	kg	735	750	750	750	750	750	750	
Max. vert. load on coupling point	kg	75								
Overall length	mm	4541								
Overall width	mm	1780								
Overall height	mm	1645								
Wheelbase	mm	2765								
Track	front	mm	1540							
	rear	mm	1550							
Luggage space	max. length	mm	1040 - 1230							
	max. width	mm	1100							
	max. height	mm	430							
Luggage capacity	3rd Row seats folded (VDA)	l	450							
	2nd & 3rd Row seats folded (VDA)	l	1520							
Min. turning circle (kerb to kerb)	m	11.0								
PERFORMANCE										
Fuel consumption ³⁾	Urban cycle	l/100 km (mpg)	8.3 (34.0)	7.9 (35.8)	10.7 (26.4)	10.7 (26.4)	6.4 (44.1)	7.7 (36.7)	7.7 (36.7)	9.3 (30.4)
	Extra-urban	l/100 km (mpg)	5.6 (50.4)	5.6 (50.4)	6.5 (43.5)	6.8 (41.5)	4.6 (61.4)	5.1 (55.4)	5.3 (53.3)	5.9 (47.9)
	Combined	l/100 km (mpg)	6.6 (42.8)	6.4 (44.1)	8.0 (35.3)	8.2 (34.4)	5.3 (53.3)	6.0 (47.1)	6.2 (45.6)	7.1 (39.8)
CO2 mass emission (combined)	g/km	154	149	189	194	139	159	163	188	
Max. speed	km/h (mph)	180 (112)	180 (112)	193 (120)	180 (112)	174 (108)	193 (120)	192 (119)	186 (116)	
Acceleration 0-62mph (0 - 100 km/h)	sec	12.9	12.9	10.5	11.7	13.2	10.1	10.5	11.6	

²⁾ Figures in accordance with EC Directive. Kerb weight condition is without driver and including coolant, oils, fuel, spare wheel and tools. Pay load will be reduced depending on the options and/or accessories installed.

³⁾ In accordance with 1999/100/EC. (Optional equipment, maintenance, driving behaviour, road and weather conditions may affect the official results)

* The 1.5 dCi & 2.0 dCi engines fitted to QASHQAI+2 include a diesel particulate filter (DPF) to reduce emissions and help protect the environment. The functionality of a DPF may not be suitable for all customers. If your journeys are predominantly urban or low speed, a model without a DPF may be a more suitable alternative.

QASHQAI - Prices Effective from 1st April 11 - 30th June 11

Doorplan	Grade	Engine	Transmission	Basic Price	VAT	Total Retail	On The Road Price
5 door	VISIA	1.6	5 manual 4x2	13,341.67	2,668.33	16,010	16,195
		1.6 with Stop/Start System	5 manual 4x2	13,520.83	2,704.17	16,225	16,395
		1.5 dCi	6 manual 4x2	14,770.83	2,954.17	17,725	17,895
		2.0	6 manual 4x2	14,604.17	2,920.83	17,525	17,895
		2.0 dCi	6 manual 4x2	15,979.17	3,195.83	19,175	19,395
	VISIA PURE DRIVE 130g	1.5 dCi	6 manual 4x2	14,700.00	2,940.00	17,640	17,695
	ACENTA	1.6	5 manual 4x2	14,675.00	2,935.00	17,610	17,795
		1.6 with Stop/Start System	5 manual 4x2	14,854.17	2,970.83	17,825	17,995
		1.5 dCi	6 manual 4x2	16,104.17	3,220.83	19,325	19,495
		2.0	6 manual 4x2	15,937.50	3,187.50	19,125	19,495
2.0 dCi		6 manual 4x2	17,312.50	3,462.50	20,775	20,995	

Doorplan	Grade	Engine	Transmission	Basic Price	VAT	Total Retail	On The Road Price
5 door	n-tec	1.6	5 manual 4x2	15,925.00	3,185.00	19,110	19,295
		1.6 with Stop/Start System	5 manual 4x2	16,104.17	3,220.83	19,325	19,495
		1.5 dCi	6 manual 4x2	17,354.17	3,470.83	20,825	20,995
		2.0	6 manual 4x2	17,187.50	3,437.50	20,625	20,995
		2.0 dCi	6 manual 4x2	18,562.50	3,712.50	22,275	22,495
			6 manual 4x4	19,854.17	3,970.83	23,825	24,045
			6 auto 4x4	20,729.17	4,145.83	24,875	25,245
	TEKNA	1.6	5 manual 4x2	17,175.00	3,435.00	20,610	20,795
		1.6 with Stop/Start System	5 manual 4x2	17,354.17	3,470.83	20,825	20,995
		1.5 dCi	6 manual 4x2	18,604.17	3,720.83	22,325	22,495
		2.0	6 manual 4x2	18,437.50	3,687.50	22,125	22,495
		2.0 dCi	6 manual 4x2	19,812.50	3,962.50	23,775	23,995
			6 manual 4x4	21,104.17	4,220.83	25,325	25,545
			6 auto 4x4	21,979.17	4,395.83	26,375	26,745

Basic and Total Retail includes delivery to the Dealership and number plates. On the Road Price includes 12 months Government Vehicle Excise Duty (determined by CO₂ emissions figure and fuel type- see back page for details) and £55 Government First Registration Fee.

QASHQAI OPTIONS - Prices Effective from 1st April 11 - 30th June 11

	VISIA	ACENTA	n-tec	TEKNA	Basic	VAT	Total
Metallic, pearlescent or black paint	○	○	○	○	366.67	73.33	440
Chrome Pack (Exterior: chrome fog lamp rings, door handles and side strips/ Interior: front door and tailgate entry guards and velour carpet mats)			○		208.33	41.67	250
Nissan Connect (with colour reversing camera)		○	●	●	500.00	100.00	600
Delivery Pack (velour carpet mats, spare bulb and fuse kit, Nissan care pack [^])	□	□	□	□	41.67	8.33	50
Protection Pack (mudguards - front and rear, soft trunkliner)	□	□	□	□	100.00	20.00	120
Style Pack 1 (side bars, chrome mirror cap, chrome rear door grip cover)	□	□	□	□	595.83	119.17	715
Style Pack 2 (chrome side strips, chrome fog lamp rings, chrome rear door grip cover)	□	□	□	□	250.00	50.00	300
Urban Pack (front styling plate, rear styling plate, roof spoiler ^{**})	□	□	□	□	383.33	76.67	460
Front park sensors	□	□	□	□	304.17	60.83	365
Chromed stainless steel side bars	□	□	□	□	510.83	102.17	613
Chrome door sill strips	□	□	□	□	148.33	29.67	178
Chrome rear door grip cover (prices from)	□	□	□	□	80.00	16.00	96
Chrome fog lamp rings	□	□	□	□	88.33	17.67	106
Chrome strip for tailgate	□	□	□	□	75.00	15.00	90
Tailgate entry guard	□	□	□	□	107.50	21.50	129
Partition rack / dog guard	□	□	□	□	171.67	34.33	206
Fixed towbar (with 7 pin TEK)	□	□	□	□	349.17	69.83	419
iPod connector [*]	□				142.50	28.50	171

Optional - ○ Standard - ● Optional Dealer Fit - □

[^] Nissan care pack includes: Nissan branded toggle bag, large car wash sponge, wash 'N' wax sachet, screen bug shifter sponge, chamoix de-mister pad, screenwash sachet, pocket torch (including batteries)

^{*} includes cradle and fitting bracket for iPod. Integrates with vehicle's audio.

^{**} cost of painting roof spoiler not included. Check with Nissan dealer for price.

Dealer fit option prices include fitting but are only a guide. Please check with your local Nissan dealer for exact prices.

QASHQAI+2 - Prices Effective from 1st April 11 - 30th June 11

Doorplan	Grade	Engine	Transmission	Basic Price	VAT	Total Retail	On The Road Price
5 door	VISIA	1.6	5 manual 4x2	14,479.17	2,895.83	17,375	17,595
		1.6 with Stop/Start System	5 manual 4x2	14,675.00	2,935.00	17,610	17,795
		1.5 dCi	6 manual 4x2	15,937.50	3,187.50	19,125	19,295
		2.0	6 manual 4x2	15,704.17	3,140.83	18,845	19,345
		2.0 dCi	6 manual 4x2	17,145.83	3,429.17	20,575	20,795
	ACENTA	1.6	5 manual 4x2	16,062.50	3,212.50	19,275	19,495
		1.6 with Stop/Start System	5 manual 4x2	16,258.33	3,251.67	19,510	19,695
		1.5 dCi	6 manual 4x2	17,520.83	3,504.17	21,025	21,195
		2.0	6 manual 4x2	17,287.50	3,457.50	20,745	21,245
		2.0 dCi	6 manual 4x2	18,729.17	3,745.83	22,475	22,695
	n-tec	1.6	5 manual 4x2	16,854.17	3,370.83	20,225	20,445
		1.6 with Stop/Start System	5 manual 4x2	17,050.00	3,410.00	20,460	20,645
		1.5 dCi	6 manual 4x2	18,312.50	3,662.50	21,975	22,145
		2.0	6 manual 4x2	18,079.17	3,615.83	21,695	22,195
		2.0 dCi	6 manual 4x2	19,520.83	3,904.17	23,425	23,645
			6 manual 4x4	20,812.50	4,162.50	24,975	25,195
			6 auto 4x4	21,620.83	4,324.17	25,945	26,445

Doorplan	Grade	Engine	Transmission	Basic Price	VAT	Total Retail	On The Road Price
5 door	TEKNA	1.6	5 manual 4x2	18,062.50	3,612.50	21,675	21,895
		1.6 with Stop/Start System	5 manual 4x2	18,258.33	3,651.67	21,910	22,095
		1.5 dCi	6 manual 4x2	19,520.83	3,904.17	23,425	23,595
		2.0	6 manual 4x2	19,287.50	3,857.50	23,145	23,645
		2.0 dCi	6 manual 4x2	20,729.17	4,145.83	24,875	25,095
			6 manual 4x4	22,020.83	4,404.17	26,425	26,645
			6 auto 4x4	22,829.17	4,565.83	27,395	27,895

Basic and Total Retail includes delivery to the Dealership and number plates. On the Road Price includes 12 months Government Vehicle Excise Duty (determined by CO₂ emissions figure and fuel type- see back page for details) and £55 Government First Registration Fee.

QASHQAI+2 OPTIONS - Prices Effective from 1st April 11 - 30th June 11

	VISIA	ACENTA	n-tec	TEKNA	Basic	VAT	Total
Metallic, pearlescent or black paint	○	○	○	○	366.67	73.33	440
Chrome Pack (Exterior: chrome fog lamp rings, door handles and side strips/Interior: front door and tailgate entry guards and velour carpet mats)			○		208.33	41.67	250
Nissan Connect (with reversing camera)		○	●	●	500.00	100.00	600
Delivery Pack (velour carpet mats, spare bulb and fuse kit, Nissan care pack*)	□	□	□	□	41.67	8.33	50
Protection Pack (mudguards - front and rear, soft trunkliner)	□	□	□	□	100.00	20.00	120
Style Pack 1 (side bars, chrome mirror cap, chrome rear door grip cover)	□	□	□	□	595.83	119.17	715
Style Pack 2 (chrome side strips, chrome fog lamp rings, chrome rear door grip cover)	□	□	□	□	250.00	50.00	300
Urban Pack (front styling plate, rear styling plate, roof spoiler**)	□	□	□	□	383.33	76.67	460
Front park sensors	□	□	□	□	304.17	60.83	365
Mudguards - front and rear	□	□	□	□	76.67	15.33	92
Front door entry guards	□	□	□	□	145.00	29.00	174
Chromed stainless steel side bars	□	□	□	□	492.50	98.50	591
Chrome door sill strips	□	□	□	□	169.17	33.83	203
Chrome rear door grip cover (prices from)	□	□	□	□	80.00	16.00	96
Chrome fog lamp rings	□	□	□	□	88.33	17.67	106
Chrome strip for tailgate	□	□	□	□	75.00	15.00	90
Tailgate entry guard	□	□	□	□	110.83	22.17	133
Fixed towbar (with 7 pin TEK)	□	□	□	□	349.17	69.83	419
iPod connector*	□				142.50	28.50	171

Optional - ○ Standard - ● Optional Dealer Fit - □

* Nissan care pack includes: Nissan branded toggle bag, large car wash sponge, wash 'N' wax sachet, screen bug shifter sponge, chamoix de-mister pad, screenwash sachet, pocket torch (including batteries)

** includes cradle and fitting bracket for iPod. Integrates with vehicle's audio.

** cost of painting roof spoiler not included. Check with Nissan dealer for price.

Dealer fit option prices include fitting but are only a guide. Please check with your local Nissan dealer for exact prices.



■ INTRODUCING OUR COMMITMENT TO YOU

You care about your Nissan so Nissan will care for you. That's why we'll make the following commitment:

YOU care about staying on the road when your Nissan is in for service or repair.

NISSAN will keep you mobile free of charge.

YOU care about quality enough to have your Nissan serviced at a Nissan dealership.

NISSAN says thanks by giving you continuous Nissan Roadside Assistance for free

YOU care about getting the best value for money when it comes to service and repair.

NISSAN will price match like for like competitor written quotes within 10 miles of your local dealer.

YOU care about having your problems resolved quickly.

NISSAN will propose how to resolve any problem within two working days.

YOU care about getting the right Nissan model, engine and gearbox to test drive.

NISSAN will guarantee that's what you'll get when you pre-book your test drive either online or through our customer service centre.

For terms and conditions, please visit nissan.co.uk/care

YOU + NISSAN

CARE



We see **SHIFT_** as an invitation. To challenge whatever feels too familiar. To open your mind to the unfamiliar. To ask the questions no-one else is asking. And to find answers no-one else can. At Nissan, we do this every day. And it shapes everything we do. The result is a line-up of vehicles that represents a pure, uncompromising shift from the ordinary.

© Designboom competition 'Think Outside the parking Box', Tanzin Haasan Salim

Visit our website at:
www.nissan.co.uk

Dealer stamp:



SHIFT_ the way you move

Every effort has been made to ensure that the content of this publication is correct at the time of going to press (September 2010). Images shown in this brochure are for guidance purposes and are not necessarily representative of any particular grade. In accordance with the company's policy of continuously improving its products, Nissan International reserves the right to change at any time the specifications and the vehicles described and shown in this publication. Nissan dealers will be informed of any such modifications as quickly as possible. Please check with your local Nissan dealer to receive the most up-to-date information. Because of the limitations of the printing processes used, the colours shown in this brochure may differ slightly from the actual colours of the paint and interior trim materials used. All rights reserved. Reproduction in whole or part of this brochure without the written permission of Nissan International is forbidden.

This brochure is made from chlorinefree paper - QQ SV3 GEA 09/2010 - Printed in EU. Part No. 99999-53999. Created by NEW ROBINSON CREAPRESS, France - Tel.: +33 1 40 62 37 37 and produced by E-GRAPHICS\FRANCE, France - Tel.: +33 1 49 09 25 35

