

RANGE ROVER EVOQUE



BERLIN MILAN SYDNEY SHANGHAI LONDON PARIS NEW YORK SAO PAULO MADRID MOSCOW BERLIN MILAN SYDNEY SHANGHAI LONDON PARIS NEW YORK
MADRID MOSCOW BERLIN MILAN SYDNEY SHANGHAI LONDON PARIS NEW YORK SAO PAULO MADRID MOSCOW BERLIN MILAN SYDNEY SHANGHAI LONDON
PARISNEW YORKMILANPARISSHANGHAIBERLINLONDONMADRIDMOSCOWSAOPAULOYDNEYNEW YORKMILANPARISNEW YORKMILANPARISSHANGHAIBERLIN
YORK SAO PAULO MADRID MOSCOW BERLIN MILAN SYDNEY SHANGHAI LONDON PARIS NEW YORK SAO PAULO MADRID MOSCOW BERLIN MILAN SYDNEY

CONTENTS

INTRODUCTION PAGE 3 **DESIGN** PAGE 4 **TECHNOLOGY** PAGE 9 **PURE** PAGE 12 **PRESTIGE** PAGE 16 **DYNAMIC** PAGE 20 **SPECIFICATIONS** PAGE 26 **SUSTAINABILITY** PAGE 27

RANGE ROVER EVOQUE

The all-new Range Rover Evoque. A Range Rover with an altogether different spirit. The most exciting vehicle in a generation. Bold and sophisticated in design. With clever technology that's innovative, relevant and always intuitive to use. Nothing else looks like it, feels like it, or drives like it. In fact, Range Rover Evoque is a quantum leap in the evolution of Range Rover design.

Unashamedly on-road with an all-new chassis, the vehicle provides an engaging blend of dynamic and sporty handling with impressive refinement. The Range Rover Evoque masters all surfaces and all weathers, using legendary Land Rover all-terrain technologies. It is smaller, lighter – the most efficient Range Rover... ever.

A true Range Rover in compact form, a new class of SUV. Available in two distinct bodystyles. Range Rover Evoque Coupé, the compact premium crossover. And Range Rover Evoque, the five-door version with its sleek, striking design and a more practical profile to suit specific lifestyle needs. The all-new Range Rover Evoque.

Range Rover Evoque's bold, assertive design is available in three distinct derivatives – Pure, Prestige and Dynamic – offering a tempting array of choices and technology.



Vehicle shown: Range Rover Evoque Coupé Prestige in Fuji White with optional 20 inch Sparkle Silver Alloy Wheels 'Style 6'



Vehicle shown: Range Rover Evoque Prestige in Firenze Red with optional 20 inch Sparkle Silver Alloy Wheels 'Style 6'



Unsurpassed interior luxury.
Pure contemporary craftsmanship.

Shown: Dynamic Plus 'Sports' seat in
Agility - Pimento/Ebony

The luxury of choice.
Beautifully crafted. Superbly designed.

A creative use of the latest materials complementing traditional materials.
Offering more colour and flair. Offering more opportunity for individual expression
as part of a personal journey.

Design

Superbly designed. Carefully created by Range Rover designers to give more opportunity for individual expression and to make every journey more personal. It is the true Range Rover experience on a compact scale.

There is a sumptuous Oxford leather wrapped interior, beautifully hand-finished with twin-needle stitching on Prestige and Dynamic Plus derivatives. And premium, soft touch materials and grained leather on the Pure and Dynamic derivatives. And real metal finishers that are cool to the touch, tactile and a reminder of the interior's superior quality, plus a contemporary, clean treatment of interior surfaces and flush-fitting air vents.

There is also the choice of an optional full-size, fixed panoramic glass sunroof, cleverly engineered to maximise its length and width to create a sensation of space and light, as well as providing full views of the surrounding environment. Importantly the toughened glass has a dark tint to protect occupants and the interior from the sun's rays.

Sensational light and space

It's not just the range of interiors. It is the vast range of colour combinations that you can choose, including standout contrast colours for the roof. There are more personalisation options available than ever before. There's a panoramic roof that gives the interior a bright, airy quality whilst helping to keep out the sun's heat. An interior sunblind is also available to reduce light in the cabin on the brightest days.





Interior shown: Prestige in Ambiance - Ivory/Espresso

Technology



Technology plays a key role at the driver's interface with the vehicle. The high-definition, eight-inch colour Touch-screen is easy to use with exceptionally clear, contemporary graphics.



Range Rover Evoque is packed with clever, relevant technology including state-of-the-art connectivity. This includes Bluetooth® for both hands free connection, with a compatible mobile phone, to the vehicle's in-built phone system and audio streaming for the enjoyment of personal music from a portable Bluetooth® device via the audio system. Essential connectivity for iPod, MP3 and memory sticks is also provided via direct inputs.

iPod is a registered trademark of Apple Inc., registered in the US and other countries. The Bluetooth® word mark and logos are owned by the Bluetooth SIG, Inc. and any use of such marks by Land Rover is under licence.



Range Rover Evoque can be enhanced with ambient LED mood lighting. This can be configured to suit personal tastes with a choice of five colours and a variety of brightness settings. To add a real sense of occasion automatic colour changes are activated when the driver chooses Dynamic mode on Terrain Response®, changing the ambient lighting to red.*

*Only available with Adaptive Dynamics

Technology



With its lightweight and more compact footprint, the Range Rover Evoque offers the enthusiast driver quicker responses and greater agility. Available on Prestige and Dynamic models, Adaptive Dynamics with advanced MagneRide™ monitors vehicle movements at least 1,000 times per second, reacting to driver or road inputs instantaneously to give greater control and minimise body roll, providing a balanced, flat ride. The system will even sense off-road conditions, and optimise damping accordingly.



Like every Range Rover vehicle, Range Rover Evoque optimises performance, capability and safety in all on and off-road conditions. It does this by employing a suite of innovative technologies including Terrain Response®,** which adapts Range Rover Evoque's engine, transmission and electronic systems to maximise driveability, comfort and traction.

There are four Terrain Response® settings: General Driving, Grass/Gravel/Snow, Mud & Ruts and Sand. A fifth Dynamic setting is added when Adaptive Dynamics is specified. Other cutting-edge technologies include the Land Rover patented Hill Descent Control (HDC), Gradient Release Control (GRC) and Hill Hold as well as Dynamic Stability Control (DSC), Electronic Traction Control (ETC) and Roll Stability Control.

**Not available on eD4 derivatives



Range Rover Evoque's advanced lighting technology achieves outstanding performance as well as providing some of the vehicle's most striking signature design elements.

The innovative LED lighting systems are used to create the unique graphics of the front daytime running lights and complex 3D 'petal' design in the rear lamps.

Up front safety during night-time driving is also enhanced with the optional availability of adaptive Xenon headlamps. These optional headlamps have an adaptive feature to provide added illumination in tight bends and can be upgraded with Automatic High Beam Assist which detects light from oncoming traffic and switches automatically between high and dipped beams as appropriate.



Our Plan for Sustainability

The all-new Range Rover Evoque is the smallest, lightest and most compact Range Rover ever.

A compact footprint and sleek design help to minimise weight and improve aerodynamic performance, while delivering sporty, agile handling. It features a more economical range of both petrol and diesel engines. A four-cylinder diesel with the availability of stop/start technology. And an all-new, state-of-the-art, turbocharged four-cylinder Si4 petrol engine which gives six-cylinder performance and feel with four-cylinder economy.

State-of-the-art turbocharged four-cylinder engines

Diesel vehicles feature the latest 2.2 litre turbodiesel, available in two forms 190hp (SD4) and 150hp (TD4) plus a 150hp (eD4 2WD) version, to deliver superb torque, responsive performance and impressive refinement.

The Si4 petrol engine is a 2.0 litre engine in a lightweight all-aluminium unit with the latest direct-injection technology, advanced turbocharging and twin independent variable valve timing to help lower fuel consumption and CO₂ emissions by up to 20 percent compared with traditional larger capacity engines.

With the eD4 2WD option, this is a Range Rover capable of delivering sub 130g/km of CO₂ emissions. It's an opportunity for more people than ever before to get into a Range Rover.

Advanced lightweight, sustainable materials

To reduce weight and improve fuel efficiency, Range Rover Evoque uses the most advanced lightweight materials. Aluminium, magnesium and titanium components contribute towards its gentler carbon footprint.

Carefully designed to maximise the use of more sustainable manufacturing materials, each vehicle uses approximately 16kg of recycled plastic and 21kg of natural and renewable materials.* Electric power-assisted steering (EPAS) also contributes to making Range Rover Evoque the most sustainable Range Rover model ever by reducing fuel consumption, and by eliminating the wasted energy in a conventional power steering system, EPAS further reduces CO₂ emissions.

Offering premium levels of luxury and performance, Range Rover Evoque is also a combination of efficiency and responsible design. This makes the vehicle one of the lightest users of resources in its class and reduces its impact on the environment throughout its lifecycle. This is a vehicle like no other. This is the remarkable, all-new Range Rover Evoque.

*Data based on manufacturer's estimate

Pure

Range Rover Evoque takes its inspiration directly from the LRX concept car which took the motoring press by storm and captured the public's imagination across the world. With its dramatic exterior design combined with Range Rover's signature interior architecture, Range Rover Evoque Pure is the purest expression of that original concept. It's packed with clever, relevant technologies to provide a premium experience.



Pure features include:

- Tailgate finisher in high gloss black
- Waist finisher in high gloss black
- Grained leather seats
- Satin Brushed Aluminium interior finisher
- Oxford leather steering wheel
- Body coloured mirror caps
- 18 inch Sparkle Silver Alloy Wheels 'Style 2'
- Grille in dark Atlas finish
- Side fender blade in dark Atlas (Coupé only), Brunel (five-door models only)
- Bonnet louvres in dark Atlas finish (Coupé only).

Vehicle shown: Range Rover Evoque Coupé Pure in Fuji White with optional 20 inch Sparkle Silver Alloy Wheels 'Style 6'

Pure is available with the following combinations.

INTERIOR THEMES



Interior shown: Pure in Ebony – Ebony/Ebony



Interior shown: Pure in Almond – Almond/Almond



Interior shown: Pure in Cirrus – Cirrus/Lunar

Pure is available with the following combinations.

INTERIOR THEMES

EBONY - FULL LEATHER



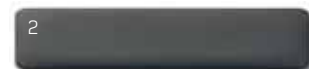
1. Ebony Grained leather seats
2. Ebony soft touch material instrument panel topper
3. Ebony soft touch material mid section
4. Satin Brushed Aluminium centre console finisher
5. Satin Brushed Aluminium trim finisher

ALMOND - FULL LEATHER



1. Almond Grained leather seats
2. Espresso soft touch material instrument panel topper
3. Almond soft touch material mid section
4. Satin Brushed Aluminium centre console finisher
5. Satin Brushed Aluminium trim finisher

CIRRUS - FULL LEATHER



1. Cirrus Grained leather seats
2. Lunar soft touch material instrument panel topper
3. Cirrus soft touch material mid section
4. Satin Brushed Aluminium centre console finisher
5. Satin Brushed Aluminium trim finisher

Pure derivatives : **EXTERIOR COLOURS**

BALTIC BLUE



BAROLO BLACK



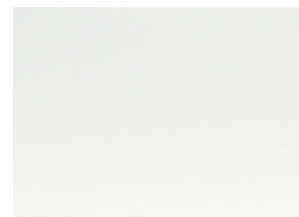
COLIMA LIME



FIRENZE RED



FUJI WHITE



HAVANA (INTRODUCED 2012)



INDUS SILVER



IPANEMA SAND



KOSRAE GREEN



MAURITIUS BLUE (INTRODUCED 2012)



SANTORINI BLACK



STORNOWAY GREY



ALLOY WHEELS

STANDARD



18 INCH SPARKLE SILVER ALLOYS 'STYLE 2'

OPTIONS



19 INCH SPARKLE SILVER ALLOYS 'STYLE 3'



19 INCH SPARKLE SILVER ALLOYS 'STYLE 4'



19 INCH DIAMOND TURNED ALLOYS 'STYLE 5'



20 INCH SPARKLE SILVER ALLOYS 'STYLE 6'

Please Note: When choosing a vehicle fitted with specific wheel and tyre combinations or optional wheels and tyres, your intended use of the vehicle should be considered. Wheels with larger diameters and lower profile tyres may offer certain styling or driving benefits, but may be more vulnerable to damage. Please discuss your requirements at your Land Rover dealership when selecting your vehicle and specification.

Prestige

Ultimate Range Rover luxury, combining an enhanced exterior with unique alloy wheels and dramatic premium bright finish details. A bold evolution of Range Rover design. With a sumptuous, leather-wrapped interior. The sight and touch of the finest materials. The allure of the unique colours. For all of the senses, the experience is remarkable.



Prestige features include:

- Side fender blade and tailgate finisher in Atlas
- 8/6 way electric seats in Oxford leather
- Real wood interior finisher
- Premium carpet mats
- Oxford leather steering wheel
- Chrome tread plates
- 19 inch Diamond Turned Alloy Wheels 'Style 5'
- Body coloured mirror caps
- Grille in Atlas finish
- Waist finisher in high gloss black (Coupé only), Satin Brushed Aluminium (five-door models only)
- Bonnet louvres in Atlas (Coupé only).

Vehicle shown: Range Rover Evoque Prestige in Firenze Red with optional 20 inch Sparkle Silver Alloy Wheels 'Style 6'

Prestige is available with the following combinations.

INTERIOR THEMES



Interior shown: Prestige in Spirit - Tan/Espresso/Ivory



Interior shown: Prestige in Couture - Ivory/Dark Cherry



Interior shown: Prestige in Vibe - Ebony/Ivory



Interior shown: Prestige in Ambiance - Ivory/Espresso



Interior shown: Prestige in Element - Cirrus/Lunar

Prestige is available with the following combinations.

INTERIOR THEMES

SPIRIT



- 1. Tan Oxford leather seats with Ivory contrast stitch
- 2. Espresso Oxford leather instrument panel topper
- 3. Ivory Oxford leather mid section
- 4. Satin Brushed Aluminium centre console finisher
- 5. Figured Macassar wood trim finisher

NO COST OPTION



Satin Brushed Aluminium centre console and trim finisher is available as a no cost option

COUTURE



- 1. Ivory Oxford leather seats with Ivory stitch
- 2. Dark Cherry Oxford leather instrument panel topper
- 3. Ivory Oxford leather mid section
- 4. Satin Brushed Aluminium centre console finisher
- 5. Figured Macassar wood trim finisher

COST OPTION



Botanical Aluminium centre console and trim finisher is available as a cost option on Couture, Vibe, Ambiance and Element interiors

VIBE



- 1. Ebony Oxford leather seats with Ivory contrast stitch
- 2. Ebony Oxford leather instrument panel topper
- 3. Ebony Oxford leather mid section
- 4. Satin Brushed Aluminium centre console finisher
- 5. Dark Grey Oak wood trim finisher

AMBIANCE



- 1. Ivory Oxford leather seats with Espresso contrast stitch
- 2. Espresso Oxford leather instrument panel topper
- 3. Ivory Oxford leather mid section
- 4. Satin Brushed Aluminium centre console finisher
- 5. Figured Macassar wood trim finisher

ELEMENT



- 1. Cirrus Oxford leather seats with Lunar contrast stitch
- 2. Lunar Oxford leather instrument panel topper
- 3. Cirrus Oxford leather mid section
- 4. Satin Brushed Aluminium centre console finisher
- 5. Dark Grey Oak wood trim finisher

Prestige derivatives : **EXTERIOR COLOURS WITH ROOF COMBINATIONS**

BALTIC BLUE



Baltic Blue Indus Silver Fuji White

BAROLO BLACK



Barolo Black Indus Silver Fuji White

COLIMA LIME



Colima Lime Indus Silver Santorini Black Fuji White

FIRENZE RED



Firenze Red Indus Silver Santorini Black Fuji White

FUJI WHITE



Fuji White Santorini Black

HAVANA (INTRODUCED 2012)



Havana Indus Silver Fuji White

INDUS SILVER



Indus Silver Santorini Black

IPANEMA SAND



Ipanema Sand Santorini Black

KOSRAE GREEN



Kosrae Green Indus Silver Santorini Black Fuji White

MAURITIUS BLUE (INTRODUCED 2012)



Mauritius Blue Indus Silver Santorini Black Fuji White

SANTORINI BLACK



Santorini Black Indus Silver Fuji White

STORNOWAY GREY



Stornoway Grey Indus Silver Santorini Black Fuji White

EXTERIOR ROOF COLOUR COMBINATIONS*



Range Rover Evoque in Stornoway Grey with body colour roof (standard)



Range Rover Evoque in Stornoway Grey with optional Fuji White contrast colour roof



Range Rover Evoque in Stornoway Grey with optional Indus Silver contrast colour roof



Range Rover Evoque in Stornoway Grey with optional Santorini Black contrast colour roof

ALLOY WHEELS

STANDARD



19 INCH DIAMOND TURNED ALLOYS 'STYLE 5'

OPTIONS



20 INCH SPARKLE SILVER ALLOYS 'STYLE 6'



20 INCH SHADOW CHROME ALLOYS 'STYLE 7'



20 INCH POLISHED SILVER ALLOYS 'STYLE 8'

*Contrast roof is available as a cost option for Range Rover Evoque Prestige derivatives.

Dynamic

A sports-orientated take on the Range Rover Evoque design theme but with a more assertive, athletic stance. Its muscular attitude is emphasised by strong design cues. The bold exterior, with unique bumpers, sills, grille and tailpipes, is twinned with a premium sports interior with leather seats and unique detailing. The dramatic slope of the roof is further highlighted with a sports spoiler and the availability of a contrast colour.



Dynamic features include:

- Dynamic front bumper
- Dynamic side sills
- Dynamic rear sport spoiler
- Dynamic rear bumper
- Dynamic exhaust with skid plate
- Grille in Santorini Black
- Side fender blade in Santorini Black
- Tailgate finisher in Santorini Black
- Textured metal interior finisher
- Perforated Oxford leather steering wheel
- 6/4 electric perforated grained leather seats
- Chrome tread plates
- 20 inch Sparkle Silver Alloy Wheels 'Style 6'
- Santorini Black mirror caps
- Bonnet louvres in Santorini Black (Coupé only).

Vehicle shown: Range Rover Evoque Dynamic in Firenze Red with optional Fuji White contrast roof with 20 inch Sparkle Silver Alloy Wheels 'Style 6'

Dynamic is available with the following combinations.

INTERIOR THEMES



Interior shown: Dynamic in Vortex - Ebony/Ebony



Interior shown: Dynamic in Pursuit - Ivory/Lunar



Interior shown: Dynamic in Verve - Pimento/Ebony



Interior shown: Dynamic in Energy - Lunar/Savannah

Dynamic is available with the following combinations.

INTERIOR THEMES

VORTEX



- 1. Ebony Perforated leather seats with Cirrus contrast stitch
- 2. Ebony soft touch material instrument panel topper
- 3. Ebony soft touch material mid section
- 4. Textured Aluminium centre console finisher
- 5. Textured Aluminium trim finisher

PURSUIT



- 1. Ivory Perforated leather seats with Lunar leather seat insert and Ivory contrast stitch
- 2. Lunar soft touch material instrument panel topper
- 3. Lunar soft touch material mid section
- 4. Textured Aluminium centre console finisher
- 5. Textured Aluminium trim finisher

VERVE



- 1. Pimento Perforated leather seats with Ebony seat insert and Pimento contrast stitch
- 2. Ebony soft touch material instrument panel topper
- 3. Ebony soft touch material mid section
- 4. Textured Aluminium centre console finisher
- 5. Textured Aluminium trim finisher

ENERGY



- 1. Lunar Perforated leather seats with Savannah leather seat insert and Savannah contrast stitch
- 2. Lunar soft touch material instrument panel topper
- 3. Lunar soft touch material mid section
- 4. Textured Aluminium centre console finisher
- 5. Textured Aluminium trim finisher

COST OPTION



Satin Brushed Aluminium centre console and Gloss Black Strata trim finisher are available as a cost option

Dynamic Plus

Dynamic Plus is an option pack available on Dynamic derivatives, features in addition to Dynamic include:

- Gloss Black Strata interior finisher
- 8/8 electric Oxford leather front 'Sports' seats
- Oxford leather instrument panel and door tops.



Interior shown: Dynamic Plus
in Velocity - Ebony/Ebony

Dynamic Plus is available with the following combinations.

INTERIOR THEMES



Interior shown: Dynamic Plus in Velocity - Ebony/Ebony



Interior shown: Dynamic Plus in Agility - Pimento/Ebony

VELOCITY



- 1. Ebony Oxford leather seats with Cirrus contrast stitch
- 2. Ebony Oxford leather instrument panel topper
- 3. Ebony Oxford leather mid section
- 4. Satin Brushed Aluminium centre console finisher
- 5. Gloss Black Strata trim finisher

AGILITY



- 1. Pimento Oxford leather seats with Ebony contrast stitch
- 2. Ebony Oxford leather instrument panel topper
- 3. Ebony Oxford leather mid section
- 4. Satin Brushed Aluminium centre console finisher
- 5. Gloss Black Strata trim finisher

NO COST OPTION



Textured Aluminium centre console and trim finisher is available as a no cost option

Dynamic derivatives : **EXTERIOR COLOURS WITH ROOF COMBINATIONS**

BALTIC BLUE



Baltic Blue Indus Silver Fuji White

BAROLO BLACK



Barolo Black Indus Silver Fuji White

COLIMA LIME



Colima Lime Indus Silver Santorini Black Fuji White

FIRENZE RED



Firenze Red Indus Silver Santorini Black Fuji White

FUJI WHITE



Fuji White Santorini Black

HAVANA (INTRODUCED 2012)



Havana Indus Silver Fuji White

INDUS SILVER



Indus Silver Santorini Black

IPANEMA SAND



Ipanema Sand Santorini Black

KOSRAE GREEN



Kosrae Green Indus Silver Santorini Black Fuji White

MAURITIUS BLUE (INTRODUCED 2012)



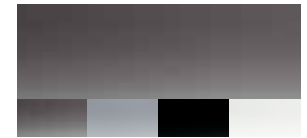
Mauritius Blue Indus Silver Santorini Black Fuji White

SANTORINI BLACK



Santorini Black Indus Silver Fuji White

STORNOWAY GREY



Stornoway Grey Indus Silver Santorini Black Fuji White

EXTERIOR ROOF COLOUR COMBINATIONS*



Range Rover Evoque in Firenze Red with body colour roof (standard)



Range Rover Evoque in Firenze Red with optional Fuji White contrast colour roof



Range Rover Evoque in Firenze Red with optional Indus Silver contrast colour roof



Range Rover Evoque in Firenze Red with optional Santorini Black contrast colour roof

ALLOY WHEELS

STANDARD



20 INCH SPARKLE SILVER ALLOYS 'STYLE 6'

OPTIONS



19 INCH DIAMOND TURNED ALLOYS 'STYLE 5'



20 INCH SHADOW CHROME ALLOYS 'STYLE 7'



20 INCH POLISHED SILVER ALLOYS 'STYLE 8'

*Contrast roof is available as a cost option for Range Rover Evoque Dynamic derivatives.

DIMENSIONS & CAPABILITIES

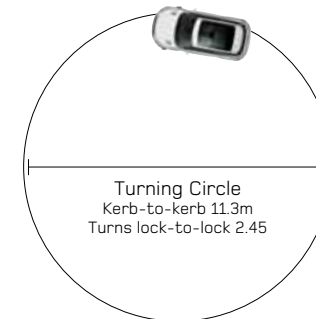


A Approach Angle 25°/19°
B Ramp Angle 22°
C Departure Angle 33°/30°
†Dynamic



Height 1,605mm*/1,635mm**
Front wheel track 1,625mm
Width including mirrors 2,125mm
Width with mirrors folded, 1,965mm

*Range Rover Evoque Coupé
**Range Rover Evoque



Wading Depth
Maximum wading depth 500mm



Obstacle Clearance
Front axle clearance 215mm
Rear axle clearance 240mm

Luggage Capacity
Rear seats upright
Height 840mm*/870mm** Width 1,090mm
Loadspace volume 550 litres*/575 litres**
Loadspace width between arches 1,000mm

Rear seats forward
Length 1,580mm Width 1,090mm
Loadspace volume 1,350 litres*/1,445 litres**
Loadspace width between arches 1,000mm
Maximum box size (width x height)
900mm x 620mm*/900mm x 625mm**

Headroom
Maximum front headroom (without sunroof) 965mm*/990mm**
Maximum front headroom (with sunroof) 995mm*/1,025mm**
Rear headroom (without sunroof) 945mm*/965mm**
Rear headroom (with sunroof) 970mm*/1,010mm**

*Range Rover Evoque Coupé **Range Rover Evoque



Our plan for a sustainable future.

We take our responsibility to our planet very seriously, with an integrated and innovative approach for a sustainable business and lower carbon world. As a company we are committed to:



e_TERRAIN TECHNOLOGIES.

EFFICIENT POWER SYSTEMS; LIGHTWEIGHT STRUCTURES, REDUCED EMISSIONS

A joint £800m investment into new technologies designed to reduce CO₂ emissions and improve fuel consumption. We are targeting a 25 percent reduction in joint fleet average tailpipe CO₂ emissions within the next five years. Beginning with an intelligent Stop/Start system on Freelander 2 diesel manual, followed by Intelligent Power Systems Management (IPSM) with Smart regenerative braking on all Discovery 4, Freelander 2 and Range Rover vehicles, to the announcement of our new compact Range Rover Evoque, e_TERRAIN TECHNOLOGIES form a fundamental part of our carbon management plan.



SUSTAINABLE MANUFACTURING.

USING FEWER RESOURCES AND CREATING LESS WASTE

World class manufacturing facilities, certified to ISO14001 since 1998. As a company we are targeting a 25 percent reduction in operating CO₂ emissions by 2012, 25 percent in waste to landfill and 10 percent in water consumption, based off 2007 levels. Going forward we are measuring our total operating carbon footprint and setting targets to reduce it; since 2006 this integrated approach has included the carbon offset of all manufacturing assembly CO₂ emissions from our Solihull and Halewood plants. But it doesn't stop there. Every new vehicle is designed to be 95 percent recoverable and reusable – with 85 percent that's recyclable and a further 10 percent that can be used to generate energy.



CO₂ OFFSETTING. INVESTING IN

RENEWABLE ENERGY, TECHNOLOGY CHANGE AND ENERGY EFFICIENCY PROJECTS

For every tonne of CO₂ emitted during the manufacturing assembly of all our vehicles, Land Rover invests in carbon reduction projects that reduce an equivalent tonne of CO₂ elsewhere. In addition, we enable our customers to offset their first 45,000 miles/72,000 km of driving in their new vehicles. We do this in the UK as well as countries in Europe, the Middle East and Asia. Independently administered by ClimateCare and governed by a body of climate change experts, CO₂ offsetting allows us to take action now, to reduce our impact on the environment as part of an integrated carbon management plan.



CONSERVATION AND HUMANITARIAN PARTNERSHIPS. WORKING PARTNERSHIPS

FOR CONSERVATION & SOCIETIES GAIN

Our vehicles are designed for purpose, so are used by conservation and humanitarian organisations worldwide. Working with our five Global Conservation partners and the International Federation of Red Cross and Red Crescent Societies (IFRC), Land Rover is proud to support the important work of the Royal Geographical Society (with IBG), The Born Free Foundation, Earthwatch Institute, Biosphere Expeditions and the China Exploration and Research Society.



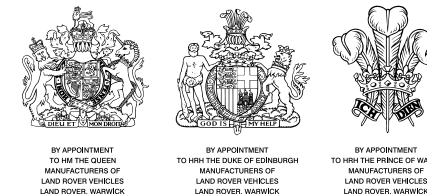
IN SUPPORT OF



International Federation of Red Cross and Red Crescent Societies

To find out more visit landrover.co.uk/ourplanet

www.rangerover.co.uk/evoque



LAND ROVER FINANCE offers a wide range of competitive finance and insurance plans, developed exclusively for Land Rover and Range Rover owners and tailored to meet all your individual requirements*. With Land Rover Finance you are dealing with people who have a close working relationship with your local dealership and who are as passionate about Land Rover and Range Rover as you are. Your Land Rover dealership will match your personal or business requirements to the most appropriate finance plan, provide you with quotations and process your application.

WARRANTY Every new Range Rover supplied by Land Rover UK comes with a standard three year unlimited mileage warranty. Please apply to your dealership at the time of purchase for full details of the manufacturer's terms and conditions.

LAND ROVER CONTRACT HIRE is designed to make the Fleet Manager's job easier. Contract Hire is an efficient way of paying for the use of a vehicle without absorbing the costs of ownership and allows your company to make a fixed monthly payment whilst removing assets from the balance sheet. Please contact your Land Rover dealership for more information.

*Finance is subject to status and conditions. Available to over 18's in the UK only. Guarantees/indemnities may be required. Certain categories of business user may be excluded.

IMPORTANT NOTICE: The colours reproduced here are subject to the limitations of the printing process and may therefore vary slightly from the actual vehicle. The company reserves the right to alter or withdraw any colour finish without notice. Certain specifications are built to customer special order. For delivery availability information, please consult your Land Rover dealership. The colours shown in this booklet cover all the models currently produced by Land Rover. Some of these colours may not be obtainable in your country, please check availability with your Land Rover dealership. This publication is for use in the United Kingdom and whilst Land Rover take the utmost care in ensuring that all the details in the publication are correct at the time of going to press, we are constantly striving for improvement and therefore reserve the right to alter specifications and equipment without notice. Details of specifications and equipment are also subject to change to suit local market conditions and requirements, and not all products are available in every market, some vehicles may be shown with accessories or optional equipment fitted. These products vary from market to market, please consult your Land Rover dealership who will be pleased to advise you on current specifications. Distributors and dealerships are not agents of Land Rover and have absolutely no authority to bind Land Rover to any express or implied undertaking or representation.

Map data (c) OpenStreetMap contributors, CC-BY-SA

LAND ROVER Registered Office:
Banbury Road, Gaydon, Warwick CV35 0RR,
United Kingdom.

Registered in England and Wales: Number 4019301

www.landrover.co.uk

© Land Rover 2011.

