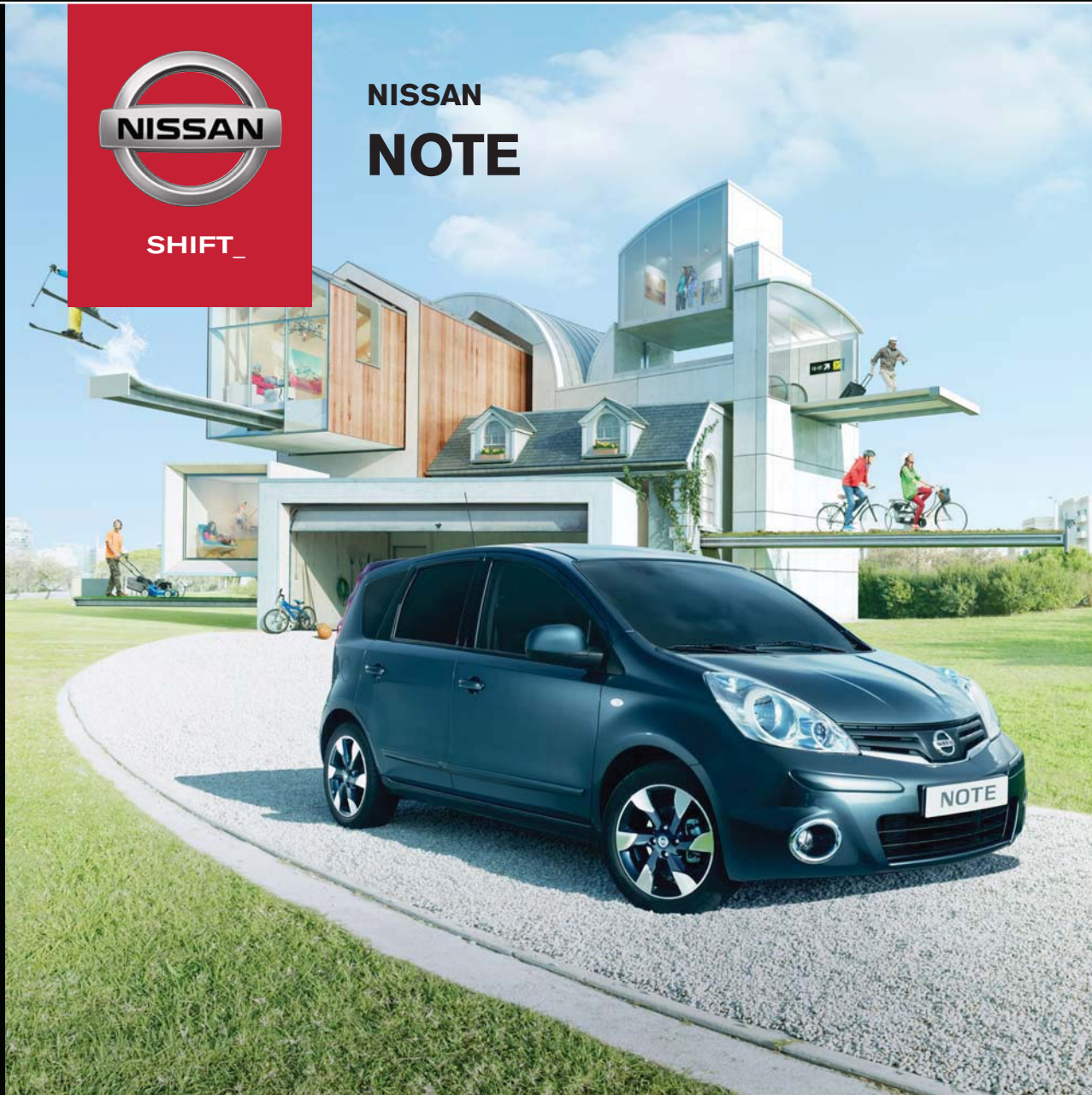




SHIFT_

NISSAN NOTE



[Contents](#) | [Exterior design](#) | [Technology & Performance](#) | [Styles & Accessories](#) | [Technical Specifications](#) | [Price List](#) | [Commitments](#)

[Print](#) | [Close](#)

[REQUEST A TEST DRIVE](#)





LOOK & FEEL

EXTERIOR DESIGN	4
-----------------	---

TECHNOLOGY & PERFORMANCE

ROOM TO MOVE	8
NISSAN CONNECT	10
FLEXIBLE SPACE	14
ENHANCED ENGINE	18
SAFETY & SECURITY	20

STYLE & ACCESSORIES

ACCESSORIES	22
COLOURS/TRIMS	24
ALL ABOUT NISSAN	26

SMALL THINGS CAN MAKE A BIG IMPRESSION

EVERY JOURNEY IS A MINI ROAD TRIP - AND WE BELIEVE THEY SHOULD FEEL THAT WAY. UPLIFTING, EASY AND FUN. DISCOVER NOTE. A TREAT FOR KEEN DRIVERS, A HOME-FROM-HOME FOR EVERYONE ELSE.

[more on www.nissan.co.uk/note](http://www.nissan.co.uk/note)



IN THE CITY, AROUND TOWN & FAR AWAY

YOU KNOW everyone's enjoying the drive when you hear: "Hope we're not there yet." Eager, yet relaxed, NOTE's chunky styling brings you stability on the road, agile handling and confidence behind the wheel. It turns family motoring into fun, which makes far away not always seem quite far enough.

[REQUEST A TEST DRIVE](#)



SURPRISING FROM THE INSIDE OUT

NOTE IS NOT CONVENTIONAL – and neither are we. So let's start at the back with those big rear boomerang-shaped lights: their unpredictable shape leaves a lasting impression, just like NOTE itself. NOTE stands out because it surprises. It feels compact on the outside when you're driving, yet it's extra large inside.

6
LOOK & FEEL

7
EXTERIOR DESIGN

[Contents](#) | [Exterior design](#) | [Technology & Performance](#) | [Styles & Accessories](#) | [Technical Specifications](#) | [Price List](#) | [Commitments](#)
Page 1 | Page 2

[Print](#) | [Close](#)


[REQUEST A TEST DRIVE](#)

STRETCH YOUR LEGS

WAIT A MINUTE.

Is this the same car? NOTE looks so compact from the outside, but inside you can really, spread out and relax. There's so much shoulder room, elbow room, head room and leg room – it makes NOTE refreshingly spacious




+160MM
SLIDING REAR SEAT


=661MM
CLASS-LEADING REAR LEGROOM

FAMILY PACK

Makes you feel pampered: fold-down front* and rear centre armrests, cupholders and pockets that stretch to take more games, CDs, toys or magazines.



*Drivers side only on Acenta and n-tec+. Not available on Visia



MAKE LIFE EASY

DO YOU ALWAYS READ INSTRUCTION MANUALS or do you prefer to just get on with it? NOTE's technology is so user-friendly that using it comes quite naturally (although it's worth reading the manual to discover all the amazing things it can do).

01_SPEED LIMITER AND CRUISE CONTROL.

Set a steady speed using the steering wheel mounted controls so you can relax on longer journeys or have help to stay within the speed-limit.

02_STEERING WHEEL MOUNTED COMPUTER AND AUDIO CONTROLS

Straightforward, logical controls on the steering wheel allow you to operate the trip computer and the audio system - including your iPod - without taking your hands off the wheel. Safe and simple.

03_CD PLAYER WITH BLUETOOTH®

If compatible, the Bluetooth®-equipped audio system will recognise your mobile phone so that you can enjoy hands-free conversations and dial favourite numbers with a single touch of the audio switch.

04_FUNCTIONAL TRIP METER

The large combimeter computer display is so easy to read, just a glance gives you the information you need.

05_AUTOMATIC LIGHTING

Helping you to see and be seen, dipped headlights and sidelights are an invaluable safety aid. NOTE's auto light system detects low light levels and automatically turns the lights on for you.

06_RAIN-SENSING WIPERS

Whether you're driving in a downpour or in that irritating on/off drizzle, the wipers are automatically activated so that you can keep your hands on the wheel and your mind on the road.



MP3
USB or Bluetooth
fully integrated navigation
NISSAN CONNECT GENUINE SYSTEM

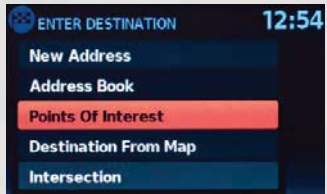
CONNECT WITH THE WORLD

PLAN YOUR ROUTE, stay in touch and play your music with Nissan CONNECT. From one neat, easy-to-control unit, it brings you integrated satellite navigation, music from a built-in radio/CD player and connectivity for your iPod, MP3 player and Bluetooth® phone*.

5" COLOUR TOUCH SCREEN. Say goodbye to lots of complicated switches. WITH NISSAN CONNECT, you control most of the options just by touching the screen.

LOOK AHEAD. Follow 2D / 3D maps, with voice guidance in eight different languages and keep your favourite maps, points of interest and safety camera information up to date via the SD card slot and the USB connector.

CD RADIO WITH TMC. As well as ordinary CDs, the CD player plays your own recorded CD-ROMs with MP3, WMA and WAV files. The radio can receive Traffic Management Control (TMC) messages that help you avoid delays.



*Where compatible



REQUEST A TEST DRIVE





ROOM FOR MANY LIVES

**IT'S INEVITABLE IN
YOUR BUSY LIFE THAT
YOU ACQUIRE MANY
BELONGINGS.**

Fortunately NOTE comes to
the rescue with remarkable
load space.

14

TECHNOLOGY & PERFORMANCE

15

FLEXIBLE SPACE

[Contents](#) | [Exterior design](#) | [Technology & Performance](#) | [Styles & Accessories](#) | [Technical Specifications](#) | [Price List](#) | [Commitments](#)

[Print](#) | [Close](#)

[Page 1](#) | [Page 2](#) | [Page 3](#) | [Page 4](#) | [Page 5](#) | [Page 6](#) | [Page 7](#) | [Page 8](#) | [Page 9](#)

[REQUEST A TEST DRIVE](#)





ROOM FOR MANY LIVES

WITH THE FRONT PASSENGER SEAT

fully forward and reclined, you can carry items up to 2.4m long, and the rear seat back splits 60:40 for extra flexibility. And then there are all those personal storage spaces...

16

17

[Contents](#) | [Exterior design](#) | [Technology & Performance](#) | [Styles & Accessories](#) | [Technical Specifications](#) | [Price List](#) | [Commitments](#)

[Print](#) | [Close](#)

[Page 1](#) | [Page 2](#) | [Page 3](#) | [Page 4](#) | [Page 5](#) | [Page 6](#) | [Page 7](#) | [Page 8](#) | [Page 9](#)

[REQUEST A TEST DRIVE](#)



CARD HOLDER CENTRE STORAGE GLOVE BOX HIDDEN STORAGE

WHEREVER YOU LOOK INSIDE NOTE, there's another clever storage space. The glove box has a huge 9 litre compartment that can be chilled by the automatic air-conditioning, plus a separate 4 litre map pocket. There's also a hidden storage space under the front passenger seat for your valuables. Rear passengers have their own compartment for small items that opens up to hold two 500ml bottles. Up front, the fascia-top lidded tray is ideal for sunglasses or an MP3 player and the deep door pockets can hold 8 CDs.

*Not on Visia grade



OPEN UP. Imagine no more arguments about what to pack, what not to pack or how to pack it. NOTE is big enough to handle it all.



DIVIDE AND MULTIPLY

SEPARATE YOUR GARDENING AND FOOD SHOPPING or keep your new clothes away from a muddy football kit: it's easy with NOTE's FlexiBoard system. It has two parts, each with a carpeted side and a waterproof side - and you can use them in lots of different ways. Maximise load space, create a second compartment or just keep your luggage loads separate: the FlexiBoard is as versatile as you are.

1_EACH FLEXIBOARD PART has a grab handle and is light enough to easily move one-handed. Useful if your other hand is holding the shopping. **SPLIT FLEXIBOARD** like this and you can have smaller luggage just behind the rear seats, and tall luggage by the tailgate. Versatile, isn't it?

2_PUT BOTH FLEXIBOARD PARTS on the boot floor to create even more luggage room. And don't forget that each part can go either side up!

3_IN THE UPPER POSITION, the FlexiBoard parts create a secure compartment below. FlexiBoard can support up to 50kg, so whatever's underneath is between well protected.

4_STAND ONE FLEXIBOARD VERTICALLY and in an instant you've created two separate load spaces. So you can keep schoolbags separate from food shopping - no more bruised bananas!





CLEANER PURE DRIVE

CLEANER, QUIETER, FASTER. Today, NOTE has got its best diesel engine ever: the 90PS 1.5dCi. The latest diesel technology gives you more power and torque. Matched to a smoother-shifting 5-speed manual gearbox, it means NOTE accelerates quickly, yet still delivers impressive fuel economy. NOTE also has the option of an economical 1.4 petrol or powerful 1.6 petrol (110PS).

MAX POWER
OUTPUT: 90PS
MAX TORQUE
OUTPUT: 200NM

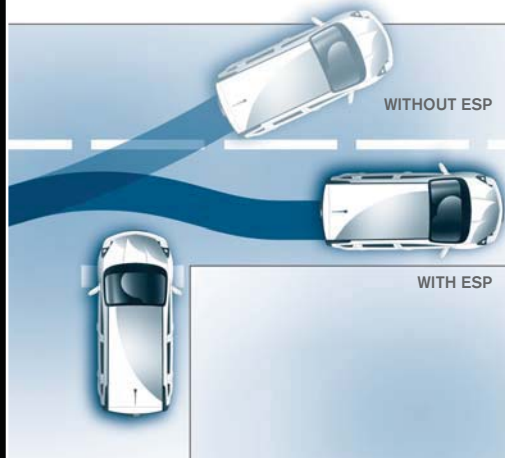
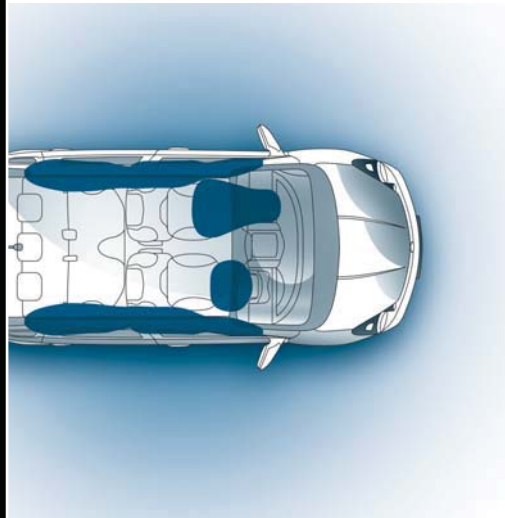


To help you quickly and easily identify our most efficient engines, Nissan is using the Pure Drive badge for vehicles with the lowest emissions. NOTE brings you a responsive car with a choice of engines producing less than 130g/km CO₂ emissions.



ENGINE	FUEL	POWER	TORQUE	TRANSMISSION
1.4L	Petrol	88PS	128Nm/min-1	manual
1.6L	Petrol	110PS	153Nm/min-1	manual
1.6L	Petrol	110PS	153Nm/min-1	automatic
1.5L dCi	Diesel	90PS	200Nm/min-1	manual





SAFETY FIRST – When you think about who's on board, you can't be safe enough. So be reassured, you can trust NOTE. You're protected by front, side and curtain airbags*, and its effective active safety systems will help you keep out of trouble. ABS, EBD and BAS work together so you can brake, stop and stay in control when it really counts.

If you have to take sudden evasive action, ESP* (the Electronic Stability Programme), works with the ABS system to rapidly and imperceptibly operate the brakes, to help you avoid swerves and skids, and go where you're steering.

*Acenta and n-tec+ grades

REAL REASSURANCE



JUST CAN'T GET ENOUGH

THERE'S ONLY ONE THING BETTER THAN NOTE, and that's your personal NOTE, tailored to you and your family with Nissan Genuine accessories. Add individual touches such as a spoiler or alloy wheels and create more convenience with a loadcarrier or hood deflector. Make your NOTE uniquely yours.



1
2
3



4

- 1) Rear spoiler
- 2) Entry guard and luxury mat
- 3) Soft trunkliner, and tailgate entry guard
- 4) Front spoiler finisher



- 5) Roof spoiler
- 6) 16" Sakura alloy wheel
- 7) Wheel arch mouldings
- 8) Wind deflectors
- 9) Door handle protectors
- 10) Chrome mirror caps
- 11) Mats - standard textile, luxury velour or rubber

COLOURS

SELECT YOUR SHADE



Flame Red
S - Z10



Artic White
S - 326



Haptic Blue
M - RAQ



Pearl Black
M - Z11



Blade
M - KYO



Metallic Grey
M - KAD



Café latte
M - C30

Solid /S - Metallic /M



Cayman Blue
M - BW9

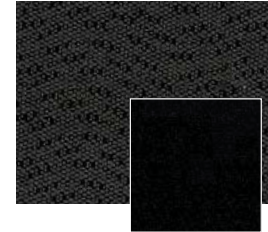


Magnetic Red
M - NAJ

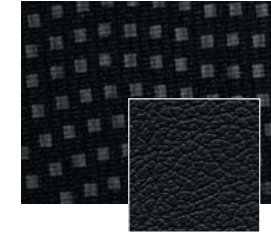
*Colours may vary or change

TRIMS

TAILOR YOUR TRIMS



VISIA
Black fabric



ACENTA AND N-TEC+
Black fabric with part leather-effect style trim

DIMENSIONS



- A: Overall length: 4,100MM
- B: Wheelbase: 2,600MM
- C: Overall height: 1,550MM
- D: Overall width: 1,690MM*

*With mirrors folded



COMMITMENTS

YOU + NISSAN

YOU CARE ABOUT YOUR NISSAN SO NISSAN WILL CARE FOR YOU.
THAT'S WHY WE'LL MAKE THE FOLLOWING COMMITMENT:

YOU care about staying on the road when your Nissan is in for service or repair.

YOU care about quality enough to have your Nissan serviced at a Nissan dealership.

YOU care about getting the best value for money when it comes to service and repair.

YOU care about having your problems resolved quickly.

YOU care about getting the right Nissan model, engine & gear box to test drive.

NISSAN will keep you mobile free of charge.

NISSAN says thanks by giving you continuous RAC roadside assistance for free.

NISSAN will price match like for like competitor written quotes within 10 miles of your local dealer.

NISSAN will propose how to resolve any problem within 2 working days.

NISSAN will guarantee that's what you'll get when you pre-book your test drive either online or through our customer service centre.

YOU + NISSAN
CARE

For terms and conditions, please visit nissan.co.uk/care

30
ALL ABOUT NISSAN



AT NISSAN, YOU BRING OUT THE BEST IN US.

You spark our imagination. You provoke our ingenuity. You inspire us to change the rules and innovate. And at Nissan, innovation is not just about additions and extensions; it's about crossing the line to reinvent the status quo. It's about developing unexpected solutions to satisfy your wildest and most pragmatic desires. At Nissan, we design cars, accessories and services that break the mould - making the practical exciting and the exciting practical to offer you a more exhilarating driving experience everyday.



NISSAN NOTE OFFERS YOU:

3-YEAR OR 60,000 MILE WARRANTY*

12-YEAR ANTI-CORROSION WARRANTY

12 MONTH OR 18,000 MILE SERVICE INTERVAL**

*Whichever comes first
**Whichever comes first. For 1.4 petrol engine, service interval is 12,500 miles.



SHIFT_



visit our website at: www.nissan.co.uk/note

Dealer stamp:

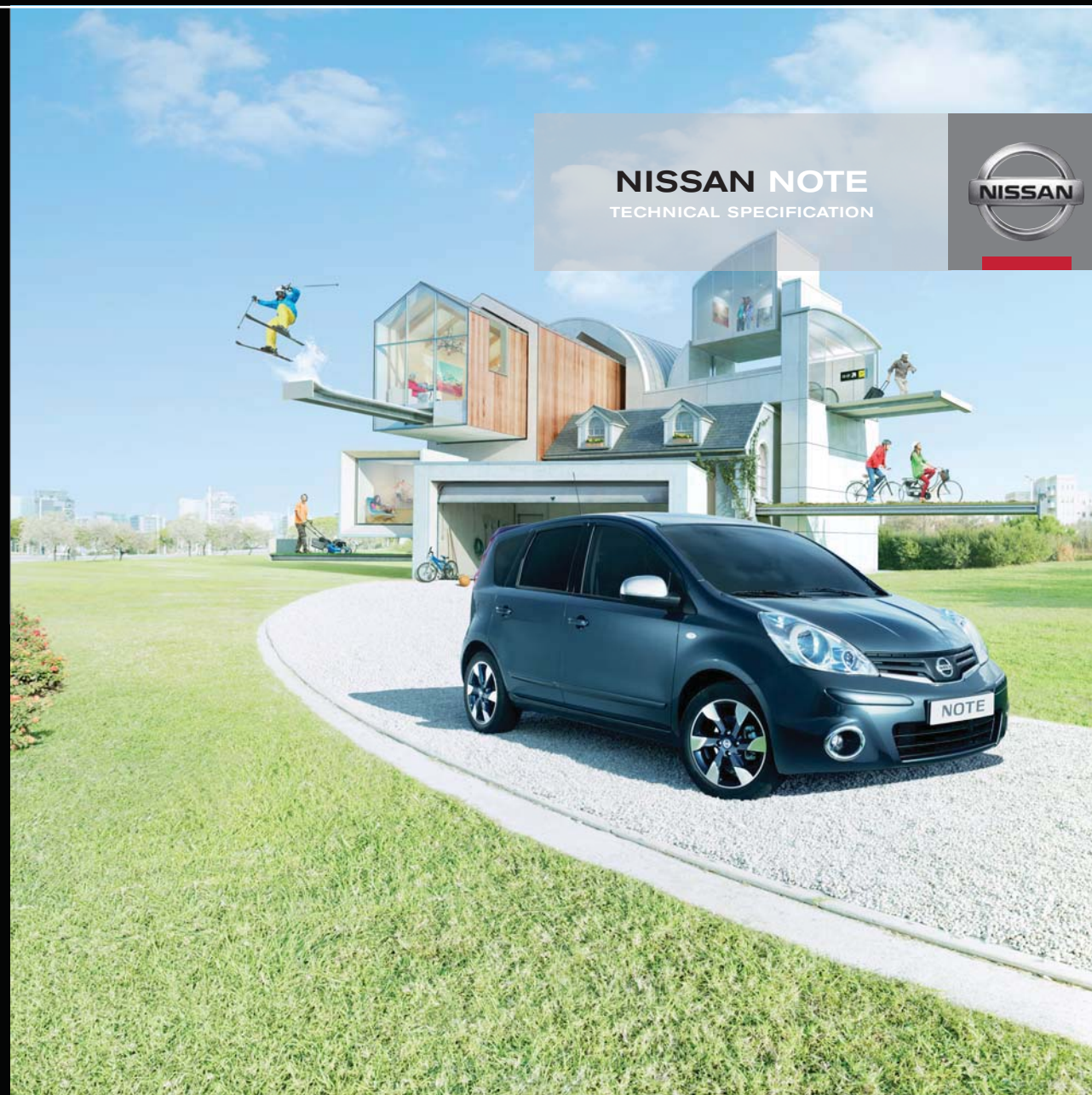
Every effort has been made to ensure that the content of this publication is correct at the time of going to press (January 2012). This brochure has been produced featuring prototype vehicles exhibited at motor shows. In accordance with the company's policy of continuously improving its products, Nissan International reserves the right to change at any time the specification and the vehicles described and shown in this publication. Nissan dealers will be informed of any such modifications as quickly as possible. Please check with your local Nissan dealer to receive the most up-to-date information. Because of the limitations of the printing processes used, the colours shown in this brochure may differ slightly from the actual colours of the paint and interior trim materials used. All rights reserved. Reproduction in whole or part of this brochure without the written permission of Nissan International is forbidden.

This brochure is made from chlorine free paper - NOTE SV3 GEA 01/2012 - Printed in EU, Part No. 99999-54037
Created by NEW BBDO, France - Tel: +33 1 40 62 37 37 and produced by E-GRAFICS/FRANCE, France - Tel: +33 1 49 09 25 35.

REQUEST A TEST DRIVE



NISSAN NOTE
TECHNICAL SPECIFICATION



REQUEST A TEST DRIVE



NOTE is stylishly designed while still offering valuable and versatile space; comfortable and easy to drive while still being fun; full of intelligent technology and function but not at the cost of simplicity and ease of use. Plus, with four grades, three engines and 10 colours, you're sure to find an appealing combination.



GRADES

VISIA

5 DOOR
1.4 LITRE, 1.6 LITRE OR 1.5 dCi 90
5-SPEED MANUAL OR 4-SPEED AUTO (1.6 LITRE ONLY)

TECHNOLOGY

- Friendly lighting system with battery save
- Tailgate wiper

COMFORT AND CONVENIENCE

- Front electric windows
- Electric speed-sensitive power steering
- Tilt-adjustable steering wheel
- Front cabin and boot lamps

HEATING, VENTILATION AND VISIBILITY

- 2-Speed wiper with variable intermittent setting

INSTRUMENTATION

- Combimeter with silver painted dial rings
- Digital clock
- Tachometer
- Digital trip meter
- Headlamp leveller

SEATING, TRIM AND STORAGE

- Anthracite 'Visia' trim
- Centre console storage areas
- 9-Litre glovebox
- Front passenger seatback pocket
- 3 Rear headrests
- 40/60 split rear seat

SAFETY

- 4 Airbags (driver, passenger and side)
- Passenger airbag cut-off switch
- ABS with EBD and Brake Assist
- Halogen headlamps with reminder chime
- Child-proof door locks
- ISOFIX childseat anchorage points

SECURITY

- Immobiliser
- Central locking with superlocks
- Remote keyless entry with anti-hijack feature

STYLING

- 15" Steel wheels with wheel covers
- Black door handles and mirrors
- Black side mouldings
- Body-coloured bumpers
- 2-Coat high gloss black front grille

IN-CAR ENTERTAINMENT

- Single CD radio with 4 speakers
- MP3 auxiliary input

OPTIONS AT EXTRA COST

- Manual air conditioning with pollen filter
- Metallic paint

ACENTA

5 DOOR
1.4 LITRE, 1.6 LITRE, 1.5 dCi 90
5-SPEED MANUAL OR 4-SPEED AUTO (1.6 LITRE ONLY)

ADDITIONAL TO VISIA GRADE

TECHNOLOGY

- Cruise control
- Speed limiter
- Auto Headlights
- Rain sensing wipers

COMFORT AND CONVENIENCE

- Rear cabin lamp
- Rear electric windows
- Driver seat armrest

HEATING, VENTILATION AND VISIBILITY

- Auto air conditioning with pollen filter
- Electric heated mirrors

INSTRUMENTATION

- Combimeter with chrome dial rings
- Integrated drive computer
- Steering wheel controls for stereo and drive computer

SEATING, TRIM AND STORAGE

- Leather covered steering wheel
- Part leather effect trim
- Secret storage tray under front passenger seat
- Flexi-board boot storage system
- Height-adjustable driver seat

- Front seat storage pockets
- Rear centre armrests
- Driver side arm rest

SAFETY

- Curtain airbags
- ESP
- Front fog lamps

STYLING

- 16" Two tone alloy wheels
- Body-coloured door handles
- Body-coloured side mouldings
- Silver painted door mirrors
- Chrome fog lamp finishers

IN-CAR ENTERTAINMENT

- Single CD radio with 6 speakers
- Audio with Bluetooth® compatibility
- MP3 auxiliary input
- USB auxiliary input

OPTIONS AT EXTRA COST

- Metallic paint

n-tec+

5 DOOR
1.4 LITRE, 1.6 LITRE, 1.5 dCi 90
5-SPEED MANUAL OR 4-SPEED AUTO (1.6 LITRE ONLY)

ADDITIONAL TO ACENTA GRADE

TECHNOLOGY

- Nissan Connect (with piano black surround)
- Rear parking sensors

COMFORT AND CONVENIENCE

- Rear privacy glass

NOTE

	1.4 litre petrol engine	1.6 litre petrol engine	1.5 litre turbo-diesel engine 90
MODEL			
Body type	5 door hatchback		
Available grades	Visia, Acenta, n-tec+	Visia, Acenta, n-tec+	Visia, Acenta, n-tec+
Seating capacity	persons 5		
ENGINE			
Engine code	CR14DE	HR16DE	K9K 400
No. of cylinders, configuration	4, in line	4, in line	4, in line
Valves per cylinder	4	4	2
Engine capacity	cm ³ 1386	1598	1461
Bore x stroke	mm 73.0 x 82.8	78.0 x 83.6	76.0 x 80.5
Max. engine power ¹⁾	kW(PS)/min-1 65(88)/5200	81(110)/6000	66(90)/4000
Max. torque ¹⁾	Nm/min-1 128/3200	153/4400	200/1750
Compression ratio	9.9:1	10.7:1	15.2:1
Fuel type	Unleaded Petrol RON 95	Unleaded Petrol RON 95	Diesel
Ignition system / Intake system (Diesel)	Electronic, distributor less type	Electronic, distributorless type	Turbo-Charger + Intercooler
Fuel supply	Multi point injection	Multi point injection	Common Rail Direct Injection
Emission control system	3-way catalyst	3-way catalyst	Oxidation catalyst + DPF
Emissions Level	EU5		
DRIVE TRAIN			
Clutch type (AUTO)	Dry plate, mechanical	Dry plate, mechanical (Torque converter with lock-up)	Dry plate, mechanical
Transmission (AUTO)	5-speed manual	5-speed manual (4-speed automatic)	5-speed manual
Gear ratio	1st (AUTO) 3.727	3.727 (2.861)	3.727
	2nd (AUTO) 2.048	2.048 (1.562)	2.048
	3rd (AUTO) 1.393	1.393 (1.000)	1.321
	4th (AUTO) 1.097	1.029 (0.697)	0.971
	5th (AUTO) 0.892	0.821 (-)	0.756
	6th (AUTO) -	- (-)	-
	Reverse (AUTO) 3.545	3.545 (2.310)	3.545
Final drive ratio (AUTO)	3.733	4.067 (4.072)	3.438
Driven wheels	Front		
CHASSIS			
Suspension	Front	Independent Mac Pherson strut, coil springs	
	Rear	Torsion beam axle, coil springs	
Steering	Electric Power assisted rack & pinion		
Braking system	Disc front, drum rear, diagonal circuit, power assisted with ABS, EBD and brake assist		
Stability control system (option)	Acenta, n-tec & Tekna		
Wheel size (option)	15x5.5 (16x6)		
Tyre size (option)	(185/65R15) (185/55R16)		

NOTE

	1.4 litre petrol engine	1.6 litre petrol engine	1.5 litre turbo-diesel engine 90
WEIGHTS & DIMENSIONS			
Kerb weight min./max. ²⁾ (AUTO)	kg 1092/1150	1182/1240 (1206/1252)	1180/1205
Gross Vehicle Weight (AUTO)	kg 1546	1560 (1580)	1615
Max. payload ²⁾ (AUTO)	kg 396	395 (403)	395
Max. axle weight front (AUTO)	kg 827	846 (864)	901
rear (AUTO)	kg 793	793 (786)	781
Max. trailer weight braked ⁴⁾ (AUTO)	kg 760	1000 (750)	900
unbraked ⁴⁾	kg 510	510	510
Max. vert. load on coupling point	kg 50	50	50
Max. roof load	kg 50	50	50
Overall length	mm 4100	4100	4100
Overall width	mm 1690	1690	1690
Overall height	mm 1550	1550	1550
Wheelbase	mm 2600	2600	2600
Track front	mm 1470	1470	1470
rear	mm 1460	1460	1460
Luggage space - max. length (rear seat back/forward)	mm 610 / 770	610 / 770	610 / 770
Luggage space - max. width	mm 1255	1255	1255
Luggage space - max. height to p/shelf	mm 383 / 604	383 / 604	383 / 604
Luggage space - max. height to headlining	mm 769 / 990	769 / 990	769 / 990
Luggage capacity (option) (VDA)	l 280 / 437	280 / 437	280 / 437
Luggage capacity max. with folded seats (VDA)	l 1332	1332	1332
Cd	0.33	0.33	0.33
Frontal area	m ² 2.08	2.08	2.08
Fuel tank capacity [N]	l 46	46	46
PERFORMANCE			
Fuel consumption ³⁾			
Urban cycle	mpg (l/100km) 39.2 (7.2)	33.2 (8.5)	56.5 (5.0)
AUTO	-	31.7 (8.9)	-
Extra-urban	mpg (l/100km) 54.3 (5.2)	51.4 (5.5)	76.3 (3.7)
AUTO	-	50.4 (5.6)	-
Combined	mpg (l/100km) 47.9 (5.9)	42.8 (6.6)	67.3 (4.2)
AUTO	-	41.5 (6.8)	-
CO2 mass emission (AUTO)	g/km 139	149 (159)	110
Max. speed	mph (km/h) 101 (163)	114 (183)	104 (168)
AUTO	-	108 (174)	-
Acceleration 0 - 100 km/h	sec 13.4	10.7 (11.7)	12.8
Min. turning circle (kerb to kerb)	m 11	11	11

¹⁾ In accordance with 1999/99/EC. ²⁾ Figures in accordance with EC Directive. Kerb weight condition is without driver and including coolant, oils, fuel, spare wheel and tools. Payload will be reduced depending on the options and/or accessories installed. ³⁾ In accordance with 2004/3/EC. (Optional equipment, maintenance, driving behaviour, road and weather conditions may affect the official results) ⁴⁾ Figures shown are with driver + 4 passengers and luggages and max. kerb weight.



You care about your Nissan so Nissan will care for you. That's why we'll make the following commitment:

YOU care about staying on the road when your Nissan is in for service or repair.

YOU care about quality enough to have your Nissan serviced at a Nissan dealership.

YOU care about getting the best value for money when it comes to service and repair.

YOU care about having your problems resolved quickly.

YOU care about getting the right Nissan model, engine and gearbox to test drive.

YOU + NISSAN
CARE

For terms and conditions, please visit nissan.co.uk/care

NISSAN will keep you mobile free of charge.

NISSAN says thanks by giving you continuous RAC roadside assistance for free.

NISSAN will price match like for like competitor written quotes within 10 miles of your local dealer.

NISSAN will propose how to resolve any problem within two working days.

NISSAN will guarantee that's what you'll get when you pre-book your test drive either online or through our customer service centre.

INTRODUCING OUR
commitment
TO YOU





We see **SHIFT_** as an invitation. To challenge whatever feels too familiar. To open your mind to the unfamiliar. To ask the questions no one else is asking. And to find answers no one else can. At Nissan, we do this every day. And it shapes everything we do. The result is a line-up of vehicles that represents a pure, uncompromising shift from the ordinary.

Visit our website at:
www.nissan.co.uk

Dealer stamp:



SHIFT_ the way you move

Every effort has been made to ensure that the content of this publication is correct at the time of going to press (November 2010). In accordance with the company's policy of continuously improving its products, Nissan Europe reserves the right to change at any time the specification and the vehicles described and shown in this publication. Nissan dealers will be informed of any such modifications as quickly as possible. Please check with your local Nissan dealer to receive the most up-to-date information. All rights reserved. Reproduction in whole or part of this brochure without the written permission of Nissan Europe is forbidden.

Part Number 99999-53988. Printed in the UK.

NOTE

Prices effective from 1st July 2012

Doorplan	Grade	Engine	Transmission	Basic Price	VAT	Total Retail Price	On The Road Price
5 door	VISIA	1.4 88PS	5 manual	9,437.50	1,887.50	11,325	11,500
		1.6* 110PS	5 manual	10,508.33	2,101.67	12,610	12,800
			4 auto	11,312.50	2,262.50	13,575	13,800
	ACENTA	1.5 dCi 90PS	5 manual	10,579.17	2,115.83	12,695	12,750
		1.4 88PS	5 manual	10,687.50	2,137.50	12,825	13,000
			5 manual	11,341.67	2,268.33	13,610	13,800
	n-tec+	1.6 110PS	4 auto	12,145.83	2,429.17	14,575	14,800
			5 manual	11,829.17	2,365.83	14,195	14,250
		1.5 dci 90PS	5 manual	11,104.17	2,220.83	13,325	13,500
			5 Manual	11,758.33	2,351.67	14,110	14,300
	1.6 110PS	4 auto	12,562.50	2,512.50	15,075	15,300	
		5 manual	12,245.83	2,449.17	14,695	14,750	

*Manual air conditioning included

Basic and Total Retail includes delivery to the Dealership and number plates. On the Road Price includes 12 months Government Vehicle Excise Duty (determined by CO₂ emissions figure and fuel type- see back page for details) and £55 Government First Registration Fee.

NOTE OPTIONS

	VISIA	ACENTA	n-tec	TEKNA	Basic	VAT	Total
Metallic, pearlescent or black paint	<input type="radio"/>	<input type="radio"/>	<input type="radio"/>	<input type="radio"/>	375.00	75.00	450
Manual air conditioning	<input type="radio"/>	<input checked="" type="radio"/>			416.67	83.33	500
Delivery Pack (Luxury velour textile mats, spare bulb and fuse kit, Nissan care pack [^])	<input type="checkbox"/>	<input type="checkbox"/>	<input type="checkbox"/>	<input type="checkbox"/>	33.33	6.67	40
Protection Pack (Mudguards - front and rear, tailgate entry guard, soft trunkliner)	<input type="checkbox"/>	<input type="checkbox"/>	<input type="checkbox"/>	<input type="checkbox"/>	175.00	35.00	210
Style Pack (Front spoiler finisher, front door entry guards, chrome trunk finisher strip)	<input type="checkbox"/>	<input type="checkbox"/>	<input type="checkbox"/>	<input type="checkbox"/>	250.00	50.00	300
Dog Pack (Dog guard, soft trunkliner, tailgate entry guard)	<input type="checkbox"/>	<input type="checkbox"/>	<input type="checkbox"/>	<input type="checkbox"/>	233.33	46.67	280
Touring Pack (Small roof box, aluminium leadcarriers, spare bulb & fuse kit, travel saftey kit ^{**})	<input type="checkbox"/>	<input type="checkbox"/>	<input type="checkbox"/>	<input type="checkbox"/>	291.67	58.33	350
Rear park sensors	<input type="checkbox"/>	<input type="checkbox"/>	<input type="checkbox"/>	<input checked="" type="radio"/>	304.17	60.83	365
Front park sensors	<input type="checkbox"/>	<input type="checkbox"/>	<input type="checkbox"/>	<input type="checkbox"/>	304.17	60.83	365
Luxury velour textile mats	<input type="checkbox"/>	<input type="checkbox"/>	<input type="checkbox"/>	<input type="checkbox"/>	32.50	6.50	39
Mudguards - front and rear	<input type="checkbox"/>	<input type="checkbox"/>	<input type="checkbox"/>	<input type="checkbox"/>	88.16	17.84	107
Aluminium entry guards (front and rear)	<input type="checkbox"/>	<input type="checkbox"/>	<input type="checkbox"/>	<input type="checkbox"/>	116.67	23.33	140
Front spoiler finisher	<input type="checkbox"/>	<input type="checkbox"/>	<input type="checkbox"/>	<input type="checkbox"/>	151.67	30.33	182
Chrome mirror caps	<input type="checkbox"/>	<input type="checkbox"/>	<input type="checkbox"/>	<input type="checkbox"/>	166.67	33.33	200
Chrome trunk finisher strip	<input type="checkbox"/>	<input type="checkbox"/>	<input type="checkbox"/>	<input type="checkbox"/>	105.83	21.17	127
Loadcarrier - aluminium	<input type="checkbox"/>	<input type="checkbox"/>	<input type="checkbox"/>	<input type="checkbox"/>	123.33	24.67	148
Luggage rack - aluminium	<input type="checkbox"/>	<input type="checkbox"/>	<input type="checkbox"/>	<input type="checkbox"/>	309.17	61.83	371
Soft trunkliner	<input type="checkbox"/>	<input type="checkbox"/>	<input type="checkbox"/>	<input type="checkbox"/>	45.83	9.17	55
Towbar and electrics* (prices from)	<input type="checkbox"/>	<input type="checkbox"/>	<input type="checkbox"/>	<input type="checkbox"/>	269.17	53.83	323

* Price quoted for fixed towbar with single electrics.

Optional - Standard - Optional Dealer Fit -

[^] Nissan care pack includes: Nissan branded toggle bag, large car wash sponge, wash 'N' wax sachet, screen bug shifter sponge, chamoix de-mister pad, screenwash sachet, pocket torch (including batteries)

^{**} Travel saftey kit includes: warning triangle, first aid kit, hi-vis saftey jacket

Dealer fit option prices include fitting but are only a guide. Please check with your local Nissan dealer for exact prices.

CO2 MASS EMISSIONS

Vehicle	Engine	Transmission	Body Style	CO ₂ Mass Emissions g/km	12 months Vehicle Excise Duty*
NOTE	1.4 88PS	5 manual	5 door	139	£120
	1.5 dCi 90PS	5 manual	5 door	110	£0
	1.6 110PS	5 manual	5 door	149	£135
		4 auto	5 door	159	£170

* Determined by CO₂ emissions figure and fuel type- see "Further information".
NB. Navara VED is fixed at £210 as it is considered a commercial vehicle.



NISSAN INSURANCE

Nissan Insurance has been designed to help Nissan drivers get the most from their cover, boasting the following benefits:

- Competitive premiums
- All repairs carried out within the Nissan Approved Repairer Network
- Only genuine Nissan replacement parts used
- The opportunity to use a courtesy car for the duration of any repairs, when you use an approved repairer (subject to availability)
- Convenient instalment plans, subject to status
- EU cover included
- 24-hour UK based claims helpline

Call Nissan Insurance today on **0845 603 4394**

Nissan Insurance is arranged and administered by Equity Insurance Brokers Limited, which is authorised and regulated by the Financial Services Authority. Registered Office: Library House, New Road, Brentwood, Essex CM14 4GD. Registered in England No. 258414. Nissan Motor (GB) Limited is authorised and regulated by the Financial Services Authority. All quotes are based on individual circumstances and are subject to insurer's underwriting criteria. Terms and conditions apply.

FURTHER INFORMATION

On The Road Prices. On The Road Price includes 12 months Government Vehicle Excise Duty (VED) determined by CO₂ emissions figure and fuel type, £55 Government First Registration Fee, number plates and delivery to the Nissan Dealership.

VED rates are determined by the vehicles CO₂ emissions figures and by the type of fuel used.
The following table applies to all new car registrations:

VED Band	A	B	C	D	E	F	G	H	I	J	K	L	M
CO ₂ Emissions Figure (g/km)*	up to 100g	101-110g	111-120g	121-130g	131-140g	141-150g	151-165g	166-175g	176-185g	186-200g	201-225g	226-255g	over 255g
Petrol Car	£0	£0	£0	£0	£120	£135	£170	£275	£325	£460	£600	£815	£1,030
Diesel Car	£0	£0	£0	£0	£120	£135	£170	£275	£325	£460	£600	£815	£1,030
Alternative Fuel Car	£0	£10	£20	£90	£110	£125	£160	£185	£205	£240	£260	£450	£465

* g/km = grammes of CO₂ per kilometre travelled.

All Light Commercial Vehicles will have a standard VED rate of £210 per annum.

Optional equipment. This price list features a selection from the full range of optional equipment, be they standard, dealer fit or factory options.

For further information and details of the full range, please contact your local Authorised Nissan Dealer.

Nissan's commitment to you includes all of the following benefits – some of which may be the reasons why you chose your new Nissan in the first place:

Three-year/60,000 miles manufacturer's warranty – Nissan's comprehensive warranty provides cover for your new Nissan from defects in materials or workmanship. Your vehicle is covered in all European Countries where Authorised Nissan Dealers are located. If your vehicle becomes inoperative due to a warrantable defect a towing service, when necessary, to the Authorised Nissan Dealer is covered. If a warrantable defect abroad takes more than six hours to repair, the Touring Assistance Programme will pay for a hotel room or rental car up to a certain maximum. The paint warranty covers painted body parts (excluding the underbody) for three years regardless of mileage driven. For further details please contact your local Authorised Nissan Dealer.

NV200 Combi - New Vehicle Warranty is issued by Nissan International SA is valid for 3 years from the warranty start date or 60,000 miles, whichever comes first. In addition, for each new NV200 Combi sold by an authorised UK Nissan dealer, Nissan Motor (GB) Limited (NMGB) will issue an extension to the New Vehicle Warranty. This warranty extension will cover your vehicle from 60,000 miles up to 100,000 miles or 3 years from the warranty start date, whichever comes first. Please note that audio and navigation units will not be covered by the warranty extension.

FURTHER INFORMATION

Nissan European Roadside Assistance is provided for the 1st 3 years of your vehicle's life.

Roadside, Recovery and At Home products are provided by RAC Motoring Services (Registered No. 1424399, Registered Office: 8 Surrey Street, Norwich, NR1 3NG). RAC Motoring Services (in respect of insurance mediation activities only) is authorised and regulated by the Financial Services Authority and within the jurisdiction of the Financial Ombudsman Service and Financial Services Compensation Scheme.

Onward Travel and European Cover are underwritten by RAC Insurance Limited (Registered No. 1424399, Registered Office: 8 Surrey Street, Norwich, NR1 3NG). RAC Insurance Limited is authorised and regulated by the Financial Services Authority and within the jurisdiction of the Financial Ombudsman Service and Financial Services Compensation Scheme.

Peace of mind – we always guarantee our workmanship, and all genuine Nissan replacement parts and accessories have a minimum of one year's warranty. Accessory prices are subject to change, please see your nearest dealership for the most up to date prices

Our technicians have been trained by Nissan to work on your vehicle and they are the Nissan specialists. They use the latest equipment to ensure your vehicle is given the best treatment. Accessory prices are subject to change, please see your nearest dealership for the most up to date prices.

Recyclability – we take all our environmental responsibilities very seriously - innovation today comes with a deep respect for the environment. Our engines are now much more unobtrusive and their emissions have been considerably reduced. All our vehicles are designed with recycling in mind.

Nissan Finance offers a wide range of flexible finance schemes to meet the needs of both our retail and business customers. Preferences, Hire Purchase, Nissan Contract Hire and Finance Lease, all offer the in-built flexibility to make the package tailor-made to meet your individual needs. We also provide added security to your finance agreement with a comprehensive range of payment protection plans. Ask your local Authorised Nissan Dealer for details.

The Nissan Motability Programme developed in association with the registered charity Motability enables those with difficulty getting around to obtain selected models on preferential terms.

All prices in this list are quoted in pounds sterling. Value Added Tax (VAT) has been calculated at 20%.

While all reasonable effort has been made to ensure the accuracy of the information provided, due to Nissan's policy of continuous product improvement, all particulars contained are subject to constant revision and Nissan reserves the right to change, alter or modify, among other things, specifications, colours and prices of models without notice at any time. Accordingly you should consult your local Authorised Nissan Dealer for the exact introduction dates of all models and for the most up-to-date information.

Images shown are for guidance purposes. In some instances photos are of non UK specification vehicles and do not represent a specific model, grade or offer.



YOU + NISSAN
CARE

You care about the car you drive. So do we. That's why we're making a commitment to providing the best customer service in the market.

Find out more nissan.co.uk/care



REQUEST A TEST DRIVE



Nissan cares for you because you care about your Nissan.
That's why we'll make the following commitment:

YOU care about staying on the road when your Nissan is in for service or repair.

YOU care about quality enough to have your Nissan serviced at a Nissan dealership.

YOU care about getting the best value for money when it comes to service and repair.

YOU care about having your problems resolved quickly.

YOU care about getting the right Nissan model, engine & gearbox to test drive.

NISSAN will keep you mobile free of charge.

NISSAN says thanks by giving you continuous Nissan roadside assistance for free.

NISSAN will price match like for like competitor written quotes within 10 miles of your local dealer.

NISSAN will propose how to resolve any problem within 2 working days.

NISSAN will guarantee that's what you'll get when you pre-book your test drive either online or through our customer service centre.

Find out more nissan.co.uk/care





MICRA



JUKE



X-TRAIL

SHIFT_ is an English word from a Japanese car company that best embraces our values and the mission of this corporation. No matter where you are in the world, SHIFT_ is the way we express who we are, how we work and what we are trying to accomplish.

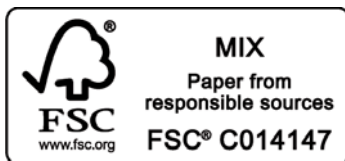
Everything we touch, we SHIFT_. And everything we SHIFT_ we try to make better and uniquely Nissan.

NISSAN MOTOR (GB) LIMITED

The Rivers Office Park
Denham Way
Maple Cross
Rickmansworth
Hertfordshire
WD3 9YS

Visit our website at: www.nissan.co.uk

Dealer stamp:



Part Number: 99999-54053

Prices effective from 1st July 2012 unless otherwise stated.