

Mazda3



mazda



zoom-zoom  
zoom-zoom  
zoom-zoom



"THE HIROSHIMA SPIRIT IS TO NEVER GIVE UP, TO PURSUE EXCELLENCE. TO MAINTAIN A "CAN DO" ATTITUDE."



"WITH A COMPACT, LIGHT ENGINE, A LIGHT BODY AND A BEAUTIFUL DESIGN. WE AIM TO CREATE A NEW STANDARD OF CARS."

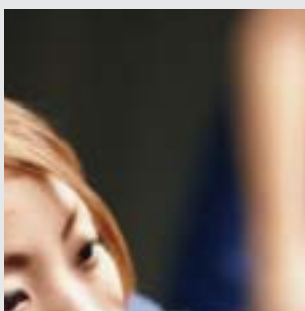


"MAZDA WILL CONTINUE TO CHALLENGE, IN ALL OUR PURSUITS. WE'LL ALWAYS DO THINGS DIFFERENTLY."

**MASAHIRO MORO**  
EXECUTIVE OFFICER



**FOLLOW THE STORY AT [MAZDA.CO.UK](http://MAZDA.CO.UK)**



"DESPITE ADVANCEMENT IN TECHNOLOGY, YOU CAN ONLY GO SO FAR WITH COMPUTERS OR OTHER SCIENTIFIC MEANS. ULTIMATELY, IT DEPENDS ON THE CARMAKER'S SKILL AND SENSITIVITY."

**HIROTAKA KANAZAWA**  
MANAGING EXECUTIVE OFFICER



## *INSPIRED ENGINEERING*

You're looking at the stunning Mazda3, a combination of dynamic and expressive design with inspired engineering. An aggressive 5-point grille, sculpted bonnet and prominent front bumper hint at the power within. Flared wheel arches and a low waistline provide a clue to the highly tuned chassis. But it's only when you're behind the wheel that you can really begin to appreciate the depth of this car's appeal. The steering is that little bit more precise. The engine more eager to rev. The handling better balanced. The brakes more responsive. These come together to create a true driver's car – let the Mazda3 remind you how much fun driving can be.







## *INSTANT ATTRACTION*

The instant you set eyes on the Mazda3 you can see that this is something different: something distinctive. Beneath the striking design, the strengthened bodyshell provides an immensely stable platform for the advanced engines that make it so enjoyable to drive whilst providing excellent ride comfort for all. The aerodynamic Mazda3 flows effortlessly through corner after corner, improving your fuel economy and minimising emissions, whilst inviting you to fully explore its breadth of dynamic abilities.



# *ADVANCED INNOVATION*

The bold, dynamic and striking looks of the Mazda3 are no mere styling exercise. By combining the latest design technologies it achieves class-leading aerodynamics and minimal weight gains. Less air resistance means less engine power is required to travel and therefore improving fuel consumption. Responsive diesel powertrains provide powerful and economical performance to keep you away from the fuel pumps and your money in your pocket.





## *RESISTANCE IS FUTILE*

Mazda is different – and proudly so. We're always seeking new and innovative ways to improve our cars – defying convention as we do so. We make the steering just that little bit more precise; more controlled. The handling better balanced. The brakes more responsive. Around town, the light-touch foot pedals and instant acceleration provide nimble and sure-footed handling; the advanced suspension soaking up bumps with ease. On the motorway, road and wind noise is a thing of the past, whilst the high-quality engine note provides direct, sporty feedback. Just as you should expect.





*COME ON IN*

Mazda3's interior is a fusion of premium refinement and outstanding functionality, with soft-touch materials, satin chrome trims and the intuitive layout of the controls and dials. A Multi-Information Display, sporty twin meter dials and an interactive lighting system come together to create a true driver focused environment. Heated front sports seats add luxury and comfort, whilst cruise control and dual-zone climate control air-conditioning hint at the impressive levels of specification available. Completing the package on selected models is the state-of-the-art Sanyo TomTom satelitte navigation system featuring the latest TomTom technologies, including advanced lane guidance, ensuring you never miss a turn and Live Services. So sit back and enjoy the dynamic drive of the Mazda3.









## *FORWARD THINKING*

We know that having a car fitted with advanced safety technology is important to you. That's why in the Mazda3 we have incorporated a whole host of safety equipment including a sophisticated Dynamic Stability Control and Traction Control system. An Emergency Stop Signal system which automatically flashes the hazard warning lights under heavy braking conditions; and LED tail-lights that are faster and brighter. Plus six airbags and active front headrests all fitted as standard to protect you and your occupants in the unlikely event of an accident. It's all here in the Mazda3.









# RANGE OVERVIEW

## THE MAZDA3 LINE-UP

### MAZDA3 TAMURA

- 17" Alloy wheels
- Rear roof spoiler
- Side skirts and sports grille
- Front fog lights
- Dynamic Stability Control (DSC) with Traction Control System (TCS)
- Emergency Stop Signalling system (ESS)
- Dual front, side and curtain airbags
- Active front headrests
- 60/40 split rear seats
- Dual-zone climate control air-conditioning
- Front and rear electric windows
- Power folding, heated door mirrors
- AM/FM radio, CD player, six speakers and auxiliary (AUX) input jack
- Steering wheel audio controls
- Leather steering wheel and gear knob
- Multi-Information Display (MID) system including trip computer
- Interactive Lighting Control (ILC) system featuring action illumination





# RANGE OVERVIEW

## THE MAZDA3 LINE-UP

### MAZDA3 VENTURE

As Tamura models plus:

- 17" Gunmetal alloy wheels<sup>1</sup>
- Unique rear roof spoiler<sup>1</sup>
- Privacy glass rear and rear side windows
- 5.8" Sanyo TomTom Satellite Navigation system
- Integrated Bluetooth®
- USB connectivity
- Cruise control
- Auto-dimming rear-view mirror
- Rain-sensing front wipers and dusk-sensing headlights
- Sports heated front seats (5-stage settings)
- Enhanced Interactive Lighting Control (ILC) system

### MAZDA3 SPORT NAV

As Venture models plus:

- Heated front windscreen
- LED rear lights

### FEATURES OF THE SANYO TOMTOM SATELLITE NAVIGATION

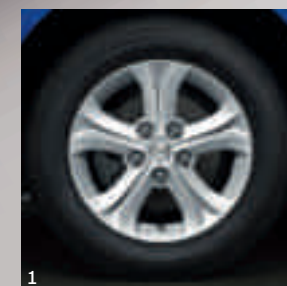
- 5.8" touch screen
- TomTom Live Services<sup>2</sup>
- Tom Tom IQ routes™
- Advanced lane guidance
- Voice control



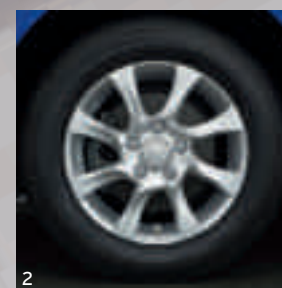




MAZDA3



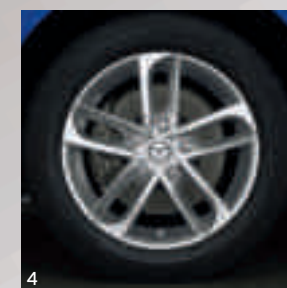
1



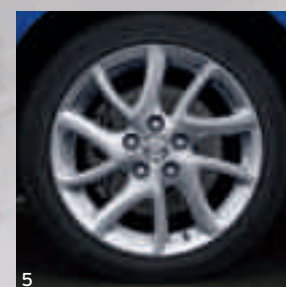
2



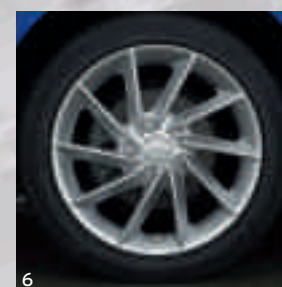
3



4



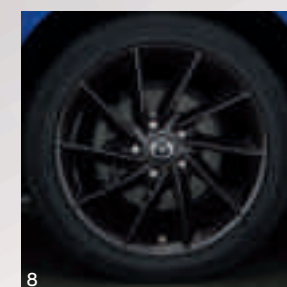
5



6



7



8

## MAKE IT YOURS

Why not make a statement with genuine Mazda alloy wheels that are precision cast and machined, and then finished to a jewel-like quality? Or how about creating a sportier stance with an Eibach suspension-lowering kit?

1 15" Alloy wheel – design 133 (Accessory).

2 15" Alloy wheel – design 50 (Accessory).

3 16" Alloy wheel – design 142 (Accessory).

4 16" Alloy wheel – design 56 (Accessory).

5 17" Alloy wheel – design 143 (Tamura / Sport Nav / Accessory).

6 17" Alloy wheel with silver finish – design 52 (Accessory).

7 17" Alloy wheel with titanium finish – design 52B (Accessory).

8 17" Alloy wheel with black gloss finish – design 52A (Accessory).





## MAKE IT YOURS

It's time to put your own stamp on the Mazda3. Add your choice of Mazda genuine accessories and you can make your driving experience that little bit more personal.



1



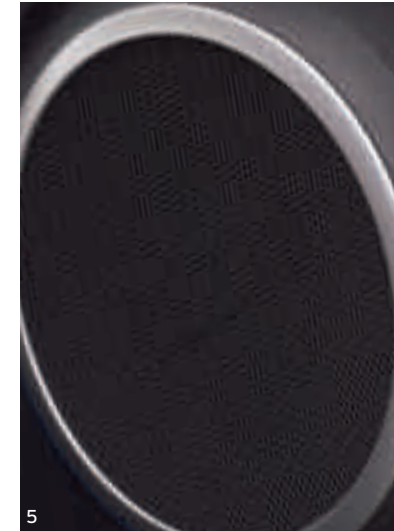
2



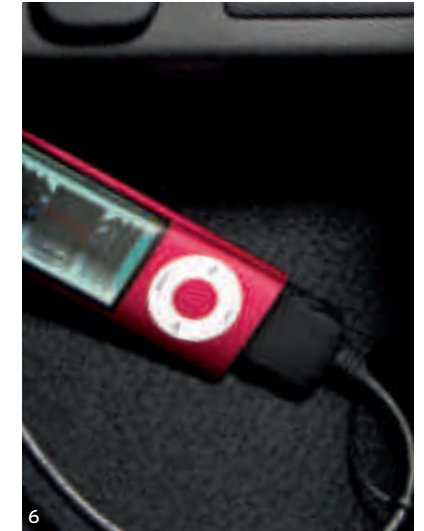
3



4



5



6



7

- 1 Brushed aluminium finish inner door handles.
- 2 Leather-wrapped gear knob with chrome finish.
- 3 Pioneer satellite navigation system.
- 4 Hands-free kit\*, with touch-screen display, voice control and Bluetooth® connectivity.

- 5 Door speaker bezels.
- 6 iPod USB adapter.
- 7 Illuminated scuff plates.

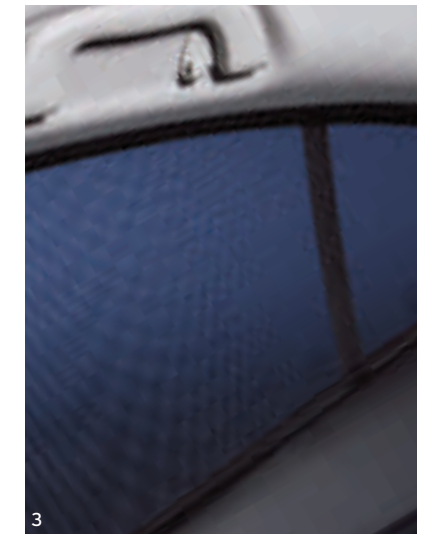
\*Images shown may not be to correct accessory specification.





## MAKE IT YOURS

Of course, you should make the most of your new car. That's why we've created a range of purpose-designed accessories for the Mazda3 – like roof boxes, bike and ski racks, boot liners and tow bars – that all help boost your car's versatility.



1 Boot storage shelf.

2 Boot liner.

3 Sunblinds.

4 Detachable tow bar.

5 Thule rear bike carrier, tow bar mounted.

6 Thule roof box (roof rails required).

7 Thule ProRide bike attachment for roof carrier.

8 Britax Römer Duo Plus (ISOFIX) child seat.







## MECHANICAL FEATURES

### Engines:

1.6 MZR Petrol

- 1598cc in-line 4-cylinder, 16-valve, DOHC, front-mounted, developing 105ps (77kW) at 6000rpm and 145Nm at 4000rpm
- CO<sub>2</sub> emissions of 144g/km<sup>1)</sup> (EC Stage V)
- Powertrain Control Module (PCM)
- Battery – 50Ah
- Alternator – 12V-100A
- Sequential electronic multi-point fuel injection
- Sequential Valve Timing System (S-VT)
- Variable Induction System

1.6 MZR Petrol Auto

- 1598cc in-line 4-cylinder, 16-valve, DOHC, front-mounted, developing 105ps (77kW) at 6000rpm and 145Nm at 4000rpm
- CO<sub>2</sub> emissions of 171g/km<sup>1)</sup> (EC Stage V)
- Powertrain Control Module (PCM)
- Battery – 50Ah
- Alternator – 12V-90A
- Sequential electronic multi-point fuel injection
- Sequential Valve Timing System (S-VT)
- Variable Induction System

1.6 Diesel

- 1560cc in-line 4-cylinder, 8-valve, SOHC, front-mounted, developing 115ps (85kW) at 3600rpm and 270Nm at 1750-2500rpm
- CO<sub>2</sub> emissions of 115g/km<sup>1)</sup> (EC Stage V)
- Powertrain Control Module (PCM)
- Battery – 75AH
- Alternator – 12V-150A
- Common-rail fuel injection
- Diesel Particulate Filter (DPF)

2.2 MZR-CD Diesel (185ps)

- 2184cc in-line 4-cylinder, 16-valve, DOHC, front-mounted, developing 185ps (136kW) at 3500rpm and 400Nm at 1800rpm-3000rpm
- CO<sub>2</sub> emissions of 142g/km<sup>1)</sup> (EC Stage V)
- Powertrain Control Module (PCM)
- Battery – 80Ah
- Alternator – 12V-100A
- Diesel Particulate Filter (DPF)

### Transmission:

- 5- or 6-speed manual – giving precise, positive shift feel to provide a feeling of unity between driver and vehicle (6-speed available on 1.6 Diesel and 2.2 MZR-CD)
- 4-speed automatic (only available on 1.6 MZR)

### Body:

- Self-supporting rigid and torsion-resistant all-steel body with defined crush zones for the front and rear sections, stable passenger safety cell with side impact reinforcement in the doors
- Mazda Advanced Impact Distribution and Absorption System (MAIDAS) designed to secure the critical interior space in the event of an accident
- Supplementary Restraint System (SRS) comprising central control unit and crash sensors, seatbelt pre-tensioners, load-limiters and airbag system

### Chassis and Suspension:

- Front: Independent suspension with MacPherson struts, 4-point rubber mounting system and liquid-filled bushes
- Rear: E-type multi-link suspension with monotube dampers and low-mounted springs to maximise load compartment space

### Brake System:

- Hydraulic, diagonally divided dual-circuit system with power brake unit
- Anti-lock Braking System (ABS) with Electronic Brake-force Distribution (EBD) and Emergency Brake Assist (EBA)
- Front: 278mm (300mm on 2.2 MZR-CD) ventilated disc brakes
- Rear: 265mm (280mm on 2.2 MZR-CD) disc brakes

### Which engine should you choose?

Our diesel engines are fitted with a DPF (Diesel Particulate Filter) to reduce particulate matter in exhaust emissions. If you regularly travel short distances then this system may not work to its optimum and as such a petrol engine may be more appropriate for you. Please speak to your local Mazda dealer for guidance when choosing your car.

## MODEL AVAILABILITY AND TECHNICAL DATA

Model Availability		1.6 MZR	1.6 MZR Automatic	1.6 Diesel	2.2 MZR-CD (185ps) Diesel
Hatchback:	Tamura	■	■	■	–
	Venture	■	–	■	–
	Sport Nav	–	–	–	■

■ = Available.

### Engine Type

Displacement (cc)	1598	1598	1560	2184
Bore x stroke (mm)	78.0 x 83.6	78.0 x 83.6	75.0 x 88.3	86.0 x 94.0
Valves per cylinder	4	4	2	4
Maximum output [ps (kW) / rpm]	105 (77) / 6000	105 (77) / 6000	115 (85) / 3600	185 (136) / 3500
Maximum torque (Nm / rpm)	145 / 4000	145 / 4000	270 / 1750	400 / 1800
Compression ratio	10.0	10.0	16.0	16.3

### Transmission

Type		5-speed manual	4-speed automatic	6-speed manual	6-speed manual
Gear ratios:	1st	3.416	2.816	3.727	3.538
	2nd	1.842	1.497	2.048	1.913
	3rd	1.290	1.000	1.258	1.290
	4th	0.972	0.725	0.919	0.926
	5th	0.775	–	0.738	0.853
	6th	–	–	0.622	0.711
	Reverse	3.214	2.648	3.818	3.831
Final gear ratio		4.105	4.416	3.611	3.095

### Steering

Steering gear	Electric power-assisted rack and pinion steering, engine speed sensing			
Minimum turning circle (wall-to-wall) (m)	10.9	10.9	10.9	10.9

### Performance and Economy

Acceleration (0-62mph in sec)	12.2	13.1	11.0	8.2	
Top speed (mph):	112	107	116	132	
Fuel consumption <sup>1)</sup> [mpg (l/100km)]:	Urban	34.4 (8.2)	28.5 (9.9)	53.3 (5.3)	40.9 (6.9)
	Extra Urban	55.4 (5.1)	47.1 (6.0)	74.3 (3.8)	62.8 (4.5)
	Combined	44.8 (6.3)	38.2 (7.4)	65.7 (4.3)	52.3 (5.4)
CO <sub>2</sub> emissions <sup>1)</sup> (g/km)	144	171	115	142	
EC emission level	EC Stage V	EC Stage V	EC Stage V	EC Stage V	
Recommended fuel	----- Unleaded 95 RON -----			Diesel	
Fuel tank capacity (litres)	55	55	55	55	

<sup>1)</sup> Fuel consumption and CO<sub>2</sub> emissions figures are obtained under standardised test conditions defined in European Legislation using a representative model. This allows direct comparison between different models from different manufacturers, but may not represent the actual fuel consumption achieved in 'real world' driving conditions. More information is available at <http://carfueldata.direct.gov.uk>

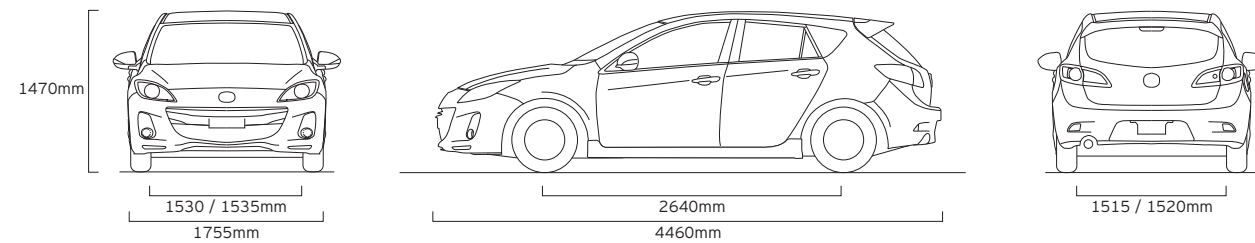




## TECHNICAL DATA

Dimensions and Weights	1.6 MZR	1.6 MZR Automatic	1.6 Diesel	2.2 MZR-CD (185ps) Diesel
Overall length / width / height (mm)	----- 4460 / 1755 / 1470 -----			
Ground clearance (mm) between the axles – unladen	155	155	155	150
Front track / Rear track (mm)	1530 / 1515	1530 / 1515	1530 / 1515	1530 / 1515
Wheelbase (mm)	2640	2640	2640	2640
Front headroom / leg room / shoulder room (mm)	----- 987 / 1068 / 1395 -----			
Rear headroom / leg room / shoulder room (mm)	----- 964 / 919 / 1371 -----			
Cargo volume, acc. to VDA (l):	----- 340 / 340 / 340 / 340 -----			
5-seat mode (to belt line)	340	340	340	340
Ventilated front disc diameter (mm)	278	278	278	300
Rear disc diameter (mm)	265	265	265	280
Kerb weight (kg) max. (excluding driver)	1271	1297	1309	1453
Permitted gross vehicle weight (kg):	----- 1770 / 1790 / 1830 / 1965 -----			
Total	1770	1790	1830	1965
Front / rear	900 / 870	925 / 865	970 / 860	1105 / 860
Towing limit (kg)*:	----- 550 / 550 / 600 / 600 -----			
Unbraked	550	550	600	600
Braked	930	550	1300	1500
Maximum roof load (kg)	75	75	75	75

\*Towing capacity is based on a 12% gradient and tested in accordance with 92/21/EEC as amended by 95/48/EC.



## TECHNICAL DATA

Safety and Security	Tamura	Venture	Sport Nav
Mazda Advanced Impact Distribution and Absorption System (MAIDAS)	●	●	●
Supplementary Restraint System (SRS) – Central control unit and crash sensors, front seatbelt pre-tensioners, load-limiters and airbag system	●	●	●
Four-Wheel Anti-lock Braking System (4W-ABS) with Electronic Brake-force Distribution (EBD) and Emergency Brake Assist (EBA)	●	●	●
Dynamic Stability Control (DSC) with Traction Control System (TCS)	●	●	●
Emergency Stop Signal system (ESS): Automatic activation of flashing hazard lights when emergency braking is applied	●	●	●
Driver and front passenger airbags	●	●	●
Front side airbags	●	●	●
Front and rear curtain airbags	●	●	●
Active front head restraints	●	●	●
Seatbelt reminder (sound warning)	●	●	●
Seatbelts: Front, 3-point (ELR) x 2 with pre-tensioners	●	●	●
Rear, 3-point (ELR) x 3	●	●	●
ISOFIX child seat anchorages, attached to outer rear seats	●	●	●
Thatcham Category 1 alarm and immobiliser system	●	●	●

### Additional Safety and Security Options

Baby and child seats:	Britax Römer Baby Safe ISOFIX Plus, for up to 13kg	Please contact your dealer for further information and availability.
	Britax Römer ISOFIX Duo Plus, for 9-18kg	
	Britax Römer Kid Plus, for 15-36kg	
Child seat pillow:	Duo Plus	
Passenger airbag cut-off switch		
LED daytime running lights		

● = Standard.



## EQUIPMENT

Exterior		Tamura	Venture	Sport Nav
Tyres and wheels:	205/50 R17 with 7.0J 17" Alloy wheels – design 143	●	–	●
	205/50 R17 with 7.0J 17" Light Gunmetal Alloy wheels	–	●	–
	Space saver spare wheel	●	●	●
Bumpers, front and rear:	Body-coloured	●	●	●
	Rear spoiler:	●	–	●
	Body-coloured, rear roof spoiler	–	●	–
	Body-coloured, unique rear roof spoiler	–	●	–
Side skirts		●	●	●
Door handles:	Body-coloured	●	●	●
Privacy glass:	Rear side and rear windows	–	●	●
Wipers:	Front, adjustable speed with intermittent wipe and electric wash	●	–	–
	Front, rain-sensing wipers	–	●	●
	Rear, adjustable speed with intermittent wipe	●	●	●
Heated windscreen		–	–	●
Headlights:	Halogen	●	●	●
Dusk-sensing headlights		–	●	●
Front fog lights		●	●	●
Rear lights:	LED technology	–	–	●
Rear brake light, high-mounted		●	●	●
Rear fog light		●	●	●
Door mirrors:	Electrically-adjustable, heated power-folding mirrors, body-coloured	●	●	●
Mica / Metallic / Pearlescent paint		○	○	○

● = Standard; ○ = Option available at extra cost.

## EQUIPMENT

### Additional Exterior Options

Tyres and wheels*:	See page 23 for wheel options
Space saver wheel kit	
Lowering suspension kit by Eibach	
Bumpers, front and rear:	Door side protectors
	Rear bumper step foil
MPS wing spoiler	
Side indicator ring:	Chrome finish
Sports exhaust system	
Mudflaps:	Front, black
	Rear, black
Door mirror covers:	Carbon
	Piano black
Rear lights:	LED technology
Parking distance sensor:	Front
	Rear
	Front and rear
Tow bar	
Roof rails	
Thule roof box	
Thule ProRide Bike carrier attachment	

Please contact your dealer for further information and availability

\*Increasing the wheel rim size will require a corresponding increase in tyre size. Please contact your Mazda dealer for further information.





## EQUIPMENT

Interior Features		Tamura	Venture	Sport Nav
Seats and integral head restraint:	Driver's, dial reclining and height adjustment	●	●	●
	Driver's, lumbar adjustment	●	●	●
	Sports bucket-type front seats	-	●	●
	Heated front seats	-	●	●
Rear seats:	60/40 split rear seats	●	●	●
	Centre armrest	●	●	●
Steering wheel:	Leather	●	●	●
	Tilt and height adjustment	●	●	●
Gear knob:	Leather	●	●	●
Door inner handles:	Front and rear, bright	●	●	●
Front and rear standard scuff plates		●	●	●
Grab handles:	Front passenger's and two rear with coat hooks	●	●	●
Audio systems:	AM/FM radio / CD player, six speakers	●	●	●
	Steering wheel audio controls	●	●	●
	Auxiliary (AUX) input jack and power outlet (located in centre armrest)	●	●	●
	iPod® connectivity <sup>3)</sup>	-	●	●
Integrated 5.8" colour touch screen display:	For display of audio, Bluetooth® and navigation information	-	●	●
Mazda navigation system:	Powered by the latest TomTom technology includes advanced lane guidance, IQ routes, voice control and a 3 month free subscription to TomTom LIVE services including Google search, HD-traffic and speed camera alerts (after 3 months a subscription can be purchased from TomTom)	-	●	●
Integrated Bluetooth® <sup>1)</sup>		-	●	●
Meter set:	Multi-Information Display (MID) including trip computer, digital tachometer, fuel gauge, and water and exterior temperature gauges	●	●	●
	Continuously-lit white graphic meters with grey illumination	●	●	●
	Gear Shift Indicator	● <sup>2)</sup>	●	●
	Digital clock	●	●	●
Overhead console with sunglasses holder		●	●	●
Headlight on reminder (sound warning)		●	●	●
Front centre console with storage box; two lidded cup holders		●	●	●
Further storage spaces:	Glovebox, with illumination	●	●	●
	Seatback pocket (passenger side)	●	●	●
	Door pockets (front and rear doors)	●	●	●
Welcome Mode Lighting:	Standard (features cockpit dome light and 'action' illumination of audio system and, if specified, climate control air conditioning)	●	-	-
	Enhanced door assist grip illumination (features sequential 'driver welcome' illumination, and 'action' illumination of audio system and climate control air conditioning)	-	●	●
Inner mirror:	Day / night	●	-	-
	Auto-dimming rear-view mirror	-	●	●
Heater ducts, rear		●	●	●
Pollen filter		●	●	●

● = Standard; <sup>1)</sup> Please refer to [www.tomtom.com/phones/compatibility](http://www.tomtom.com/phones/compatibility) for phone compatibility. <sup>2)</sup> Not available on Mazda3 1.6 Tamura Automatic. <sup>3)</sup> iPod® connectivity is via an accessory iPod® adapter, please consult your local mazda dealer.

## EQUIPMENT

Additional Interior Options		Tamura	Venture	Sport Nav
Foot pedals:	Aluminium	●	●	●
Footrest:	Aluminium	●	●	●
Gear knob:	Leather, chrome finish	●	●	●
Inner door handles:	Front and rear, silver	●	●	●
Door speaker bezels:	Front and rear, silver	●	●	●
Sunblinds:	For rear side windows	●	●	●
	For rear window, hatchback	●	●	●
Scuff plates:	Front and rear, with illuminated front 'Mazda3' logo	●	●	●
Handbrake:	Cover, brushed aluminium finish	●	●	●
Audio:	iPod USB adapter	●	●	●
Satellite navigation:	Pioneer satellite navigation system	●	●	●
Mobile phone console:	Hands-free kit with touch-screen display, voice control and Bluetooth®	●	●	●
Cigar lighter		●	●	●
Ashtray		●	●	●
Storage compartment:	Anti-slip mat	●	●	●
	Boot liner	●	●	●
	Boot net	●	●	●
	Boot storage shelf	●	●	●
	Dog guard	●	●	●
Baby care mirror		●	●	●
First aid kit		●	●	●
Warning triangle		●	●	●
Welcome mode lighting:	For front, driver and passenger footwell	●	●	●

Please contact your dealer for further information and availability.

Comfort and Convenience		Tamura	Venture	Sport Nav
Remote central locking with deadlocking (with jack-knife type retractable key)		●	●	●
Power steering:	Electric	●	●	●
Cruise control:	Steering wheel operated	-	●	●
Electric windows:	Front and rear, with one-touch auto down / up, timer function on driver's side	●	●	●
Air-conditioning:	Dual-zone climate control	●	●	●
Sunvisors:	Driver's and passenger's with covered vanity mirror and illumination	●	●	●

Additional Comfort and Convenience Options		Tamura	Venture	Sport Nav
Front and rear floor mats:	Carpet floor mat, 'standard', black with 'Mazda3' logo	●	●	●
	Carpet floor mat, 'luxury', black with 'Mazda3' logo	●	●	●

Please contact your dealer for further information and availability.

● = Standard.











### **Manufacturer's Warranty – 3-Year Cover**

Every Mazda is designed and built to the highest standards of performance, comfort and reliability. For your further reassurance, Mazda also provides a full 3-year / 60,000 mile warranty cover, Mazda Roadside Assistance<sup>1)</sup>, 3-year paintwork warranty and a 12-year anti-perforation warranty.

### **Mazda Momentum – New Vehicle Extended Warranty**

At any time during the manufacturer's warranty period, you may purchase a Mazda Momentum extended warranty package. Three options are available. Your Mazda dealer will be pleased to provide you with details.

### **Free Mazda Accident Aftercare**

Mazda Accident Aftercare is designed to assist you following a road traffic accident. Should you ever be involved in an accident or need to make an insurance claim, 'Mazda First' will liaise directly with your insurer to process the claim and ensure that your vehicle is repaired at a Mazda approved bodyshop using only genuine Mazda parts, in addition to other benefits such as providing you with a free courtesy car and maintaining your Mazda warranties.

### **Mazda Contract Hire\***

Mazda Contract Hire offers low running costs with market-driven residual values, resulting in extremely competitive ownership costs for businesses and individuals. To find out more about the benefits of Mazda Contract Hire, please speak to your Mazda dealer or phone 08446 001 410.

### **Digital Service Record**

The Mazda Digital Service Record (DSR) system provides increased security against counterfeit service documents and odometer tampering, and makes it easy to keep the service history up-to-date. Stored on a central database, the DSR replaces the traditional paper service book and ensures a secure, accurate and permanent service history for the life of the vehicle.

### **Your Mazda dealer:**

Mazda Motors UK Limited reserves the right to introduce changes in specification and equipment due to its ongoing product development. Colour and trim samples shown in this brochure may vary from the actual colours because of the limitations in the printing process. It is recommended that you consult your Mazda dealer when referring to these. Images may not be to UK specification.

<sup>1)</sup>Please visit [www.mazda.co.uk](http://www.mazda.co.uk) for more details on your Mazda Roadside Assistance coverage.

The Bluetooth® word mark and logos are owned by the Bluetooth SIG, Inc. and any use of such marks by Mazda Motor Company is under licence. Other trademarks and trade names are those of their respective owners.

\*Mazda Contract Hire is provided by ALD Automotive Ltd, trading as Mazda Contract Hire, Oakwood Park, Lodge Causeway, Fishponds, Bristol, BS16 3JA. Guarantees / Indemnities may be required. ALD Automotive Ltd is incorporated in the UK and regulated by the Financial Services Authority in respect of general insurance products.

October 2012.

**Internet: [www.mazda.co.uk](http://www.mazda.co.uk)**  
**Mazda Helpline: 08457 48 48 48**

