

NEW NISSAN NV400



[Contents](#) | [Range](#) | [Exterior design](#) | [Interior design](#) | [Technology & performance](#) | [Style & accessories](#) | [Technical specifications](#) | [Price list](#) | [Commitments](#)

[Print](#) | [Close](#)

[REQUEST A TEST DRIVE](#)





BIG, BOLD AND STRONG

FOR A BETTER WAY OF WORKING

THE BOLD STYLING OF THE NEW NISSAN NV400 INSTANTLY CONVEYS ITS CHARACTER: STRONG, HIGHLY CAPABLE AND ADVANCED. IT'S A VAN YOU'LL BE PROUD AND PLEASED TO OWN; THE LARGE AND PRACTICAL LOAD SPACE, COMFORTABLE AND SPACIOUS CAB AND HIGHLY EFFICIENT ENGINE MAKE NV400 THE IDEAL WORK MATE FOR YOUR BUSINESS.

NV400 IS AVAILABLE IN MANY VERSIONS AND WITH NUMEROUS OPTIONS, TO EXACTLY SUIT YOUR NEEDS. AND IT'S BUILT WITH RENOWNED NISSAN ATTENTION TO STRENGTH AND QUALITY. NV400 IS RESOURCEFUL, RELIABLE AND READY TO DELIVER A BETTER WAY OF WORKING.

more on www.nissan.co.uk and www.nissan-lcv.co.uk

LOOK & FEEL

RANGE	4
EXTERIOR DESIGN	6
INTERIOR DESIGN	8

TECHNOLOGY & PERFORMANCE

STORAGE SPACE	10
LOADING CAPACITY	12
ENGINE	14
DRIVING WHEELS	16
DIMENSIONS	18
SAFETY	20
COMFORT AND TECHNOLOGY	22

STYLE & ACCESSORIES

EQUIPMENT & OPTIONS	24
ACCESSORIES	26
COLOURS, TRIMS & WHEELS	28
ENGINE & TECHNICAL SPECIFICATIONS	30
CUSTOMER SERVICES	32



CREATE THE PERFECT MATCH

UNBEATABLE POTENTIAL. NV400 offers one of the widest ranges in the LCV market. A choice of wheelbase, length and height, payload, engines, Front or Rear Wheel Drive plus body conversions provides all the possibilities you need to create your perfect match.



4
LOOK & FEEL

5
RANGE

[Contents](#) | [Range](#) | [Exterior design](#) | [Interior design](#) | [Technology & performance](#) | [Style & accessories](#) | [Technical specifications](#) | [Price list](#) | [Commitments](#)

[Print](#) | [Close](#)

[REQUEST A TEST DRIVE](#)



RUGGED GOOD LOOKS

FIT FOR PURPOSE. NV400 makes a powerful first impression. A bold, assertive design, with the angled grille struts familiar from Nissan's tough SUV, mean NV400's style matches its character: robust, sturdy and ready for action.

6
LOOK & FEEL

7
EXTERIOR DESIGN

[Contents](#) | [Range](#) | [Exterior design](#) | [Interior design](#) | [Technology & performance](#) | [Style & accessories](#) | [Technical specifications](#) | [Price list](#) | [Commitments](#)

[Print](#) | [Close](#)

[REQUEST A TEST DRIVE](#)



A HAVEN FROM HARD WORK

COMFORTABLE AND SPACIOUS. NV400's smart and practical interior gives you all you need to ease your way through the most demanding day. It's airy with excellent visibility, effectively insulated from noise and has lots of well-organised, convenient storage. And the intelligent ergonomic design gives each control a logical, easily reached location and intuitive operation.

"Dashboard clipboard holder not available."





1

A PLACE FOR EVERYTHING

EASY TO MANAGE. A tidy cab is safer and easier to live with; nothing rolling around your feet, no wasted time hunting for items. That's why NV400 has many clever storage spaces, such as the centre seatback table with rotating tray and pop-up notepad holder.

- 1) Double overhead parcel shelf
- 2) Bottles (up to 2 litres) are within easy reach in the door pockets
- 3) Handy lower door pocket
- 4) Useful upper storage pocket
- 5) Assistant dashboard compartment
- 6) Large refrigerated glove compartment* with capacity for two 2-litre bottles
- 7) Coins, phone and credit card holder
- 8) Cup and can holder, additional lower storage

* Requires air conditioning



2 3

4



5 6



1

7

3

6

7

8

2

8

NV400 CAN TAKE IT

MORE USABLE SPACE. Whichever size NV400 you choose, it's packaged to give maximum load space within its exterior dimensions. There are ten cargo volumes, from 8m³ to 17m³ for NV400 Panel Vans and up to 22m³ with the Box conversion. And there's up to 4.4m cargo length available, giving you room for bulky loads. Cargo volume can take up to 5 Euro Pallets.

NV400 handles heavy loads too: up to 2254kg. No matter how big or awkward your cargo, NV400 makes it easier to get on board, thanks to a low floor and large, wide-opening doors.



- 1) Wide opening doors to ease loading
- 2) Floor hooks



HIGH OUTPUT, LOW COSTS

POWER AND EFFICIENCY. The NV400's 2.3 litre dCi turbodiesel is available with 100hp, 125hp or 150hp power outputs. Maximum torque (up to 350Nm for the 150hp engine) is produced at just 1250rpm, for easy acceleration and towing, and low fuel consumption. The engine is Euro 5 compliant, keeping CO₂ emissions as low as 187g/km and the standard Diesel Particulate Filter (DPF) keeps particulate emissions to the minimum.

LOW RUNNING COSTS. Oil change service intervals of up to 25,000 miles or every two years contribute to NV400's class leading low Total Cost of Ownership.

ALWAYS BE IN THE OPTIMUM GEAR. NV400 has a six-speed manual gearbox (robotized gearbox available for 125hp versions) with a dashboard indicator light showing when to change gear for the best economy.



- 1) 2.3 litre dCi turbodiesel
- 2) Six-speed manual gearbox
- 3-4) Optimum gear dashboard indicator



TSC Creteil - Atelier Salomon Architectes



FRONT OR REAR WHEEL DRIVE

BEST FOR YOUR BUSINESS. NV400 gives you the choice of Front or Rear Wheel Drivetrains, for all engine outputs and across a variety of body styles.

LIGHT WORK OR HEAVY DUTY.

1) Front Wheel Drive NV400 has a low chassis height, making loading especially easy and liberating more space for an improved payload. Low kerb weight contributes to better fuel economy too.



2) The Rear Wheel Drive NV400 is the traditional choice for chassis cab layouts. It allows your payload to be evenly distributed front to back, ensuring safe handling when fully loaded. Best suited to medium duty applications and ideal for towing.



FRONT WHEEL DRIVE PANEL VAN

Front Wheel Drive NV400 delivers what your business needs: greater efficiency. A lower kerb weight helps improve fuel economy, reducing your running costs. The low frame height makes loading easier and means there's more space inside, for a bigger payload. It's the van that gives you more, but demands less.

WEIGHTS AND LOADS

	Max. cargo volume (m ³)	Max. payload (kg)	
		2.8t	3.3t
L1H1	8	1030	1489
Max. weight on front / rear axle		1550 / 1650	1650 / 1900
Braked / unbraked trailer capacity		2500 / 750	

	Max. cargo volume (m ³)	Max. payload (kg)	
		3.3t	3.5t
L2H2	10.8	1420	1620
L2H3	12.3	n/a	1569
Max. weight on front / rear axle		1650 / 1900	1850 / 2100
Braked / unbraked trailer capacity		2500 / 750	

	Max. cargo volume (m ³)	Max. payload (kg)	
		3.5t	
L3H2	13	1530	
L3H3	14.8	1490	
Max. weight on front / rear axle		1850 / 2100	
Braked / unbraked trailer capacity		2500 / 750	

DIMENSIONS (mm)

	L1H1	L2H2	L2H3	L3H2	L3H3
Min. turning circle between kerbs / walls	12 / 12.5m	13.6 / 14.1m		15.7 / 16.2m	

CARGO AREA

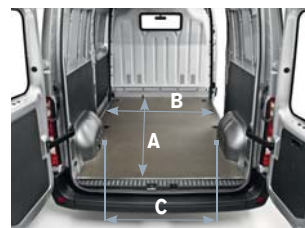
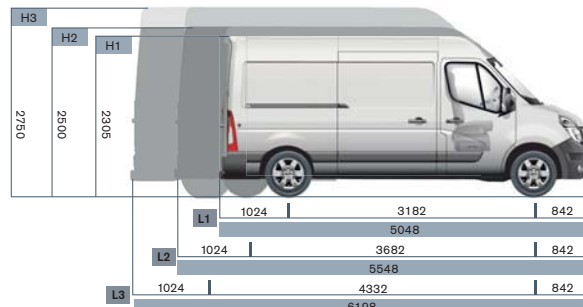
Cargo length on floor (A)	2583	3083	3083	3733	3733
Cargo length at 1.1m above floor	2530	3030	3030	3680	3680
Cargo width (B)	1765	1765	1765	1765	1765
Width between wheelarches (C)	1380	1380	1380	1380	1380
Cargo height	1700	1894	2144	1894	2144
Min. / max. loading sill height	546 / 564	545 / 562	543 / 556	543 / 557	542 / 555

SLIDING DOORS

Sliding door width	1050	1270	1270	1270	1270
Sliding door height	1581	1780	1780	1780	1780

REAR DOOR

Rear door width at 169mm above floor	1580	1580	1580	1580	1580
Rear door height	1627	1820	1820	1820	1820



REAR WHEEL DRIVE PANEL VAN

Rear Wheel Drive NV400 offers practical versatility, with the capacity and strength to handle all your medium duty carrying applications. Its Rear Wheel Drive layout creates optimum front-to-rear balance, for better payload distribution. It also ensures surefooted and stable driving characteristics when fully loaded, and makes it ideally suited for towing.

WEIGHTS AND LOADS

	Max. cargo volume (m ³)	Max. payload (kg)		
		3.5t	3.5t TWR	4.5t TWR
L3H2	12.4	1390	1254	2254
L3H3	14.2	1352	1221	n/a
Max. weight on front / rear axle		1850 / 2300	1850 / 2800	1850 / 3200
Braked / unbraked trailer capacity		2500 / 750		

	Max. cargo volume (m ³)	Max. payload (kg)	
		3.5t TWR	4.5t TWR
L4H2	14.9	1176	2176
L4H3	17	1134	2134
Max. weight on front / rear axle		1850 / 2800	
Braked / unbraked trailer capacity		3000 / 750	

DIMENSIONS (mm)

	L3H2	L3H2 TWR	L3H3	L3H3 TWR	L4H2	L4H3
Min. turning circle between kerbs / walls	13.6 / 14.1m			15.7 / 16.2m		

CARGO AREA

Cargo length on floor (A)	3733	3733	3733	3733	4383	4383
Cargo length at 1.1m above floor	3680	3680	3680	3680	4330	4330
Cargo width (B)	1765	1765	1765	1765	1765	1765
Width between wheelarches (C)	1380	1080	1380	1080	1080	1080
Cargo height	1798	1798	2048	2048	1798	2048
Min. / max. loading sill height	674 / 696	706 / 724	672 / 694	704 / 723	701 / 717	700 / 715

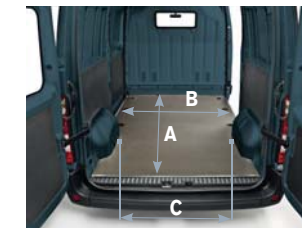
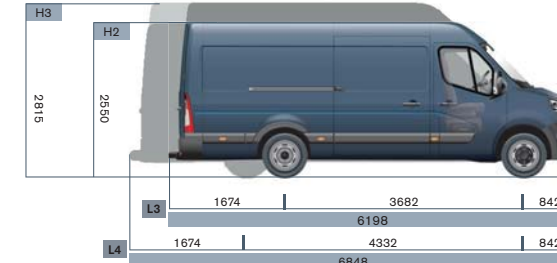
SLIDING DOORS

Sliding door width	1270	1270	1270	1270	1270	1270
Sliding door height	1684	1684	1684	1684	1684	1684

REAR DOOR

Rear door width at 169mm above floor	1580	1580	1580	1580	1580	1580
Rear door height	1724	1724	1724	1724	1724	1724

- TWR: Twin Wheel at Rear



COMPREHENSIVE SAFETY FEATURES

ACTIVE AND PASSIVE. NV400 has many active safety features built in to help you stay fully in control. Predictable handling and road holding have been designed in from the outset, and there's the additional support of ABS, EBD Electronic Brake Distribution and Brake Assist, with load adaptive ESP and ASR traction control standard on all SE grade models.

In addition to the strong and rigid cab with steel bulkhead, you're protected by the effective passive safety features of a driver's airbag and optional passenger and side airbags.



Anti-lock brakes help you retain steering control in emergency braking.



Electronic Stability Control helps detect and automatically correct skids by sensitively braking individual wheels. A load detection system compensates for the weight of your cargo.



- 1) Driver and passenger airbags
- 2) Foglamps





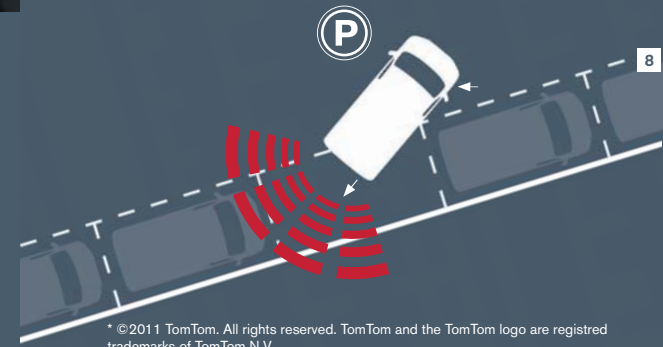
EASIER DRIVING

HELPFUL TECHNOLOGY. Nissan's approach to innovation is to take the most advanced and useful features and make them more accessible to everyone. Our technology is simple to operate, so driving becomes safer and more enjoyable.

- 4-5) Cruise control and speed limiter
- 6-7) Rear view camera and screen
- 8) Rear parking sensors



- 1-2) Nissan Connect by TomTom* with remote control
- 3) Radio with Bluetooth®



* ©2011 TomTom. All rights reserved. TomTom and the TomTom logo are registered trademarks of TomTom N.V.





1 2



3 4



5

ADAPT NV400 TO FIT YOUR WORKING DAY

YOU KNOW WHAT'S BEST FOR YOUR BUSINESS.

That's why we offer a range of practical options for you to tailor NV400 precisely to your needs. Whatever your working day entails, NV400 will be ready for it.

- 1) Full steel bulkhead with glazed panel
- 2) Full steel bulkhead
- 3) 270° opening glazed rear doors
- 4) Adjustable suspension seat
- 5) Digital tachograph
- 6) Locking differential
- 7) Power take-off from engine and gearbox
- 8) Rear step
- 9) Towbar with ball and socket joint

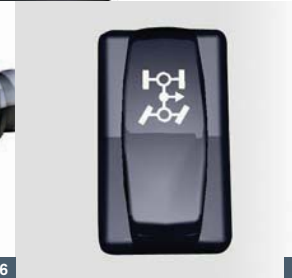


270°

24
STYLE & ACCESSORIES



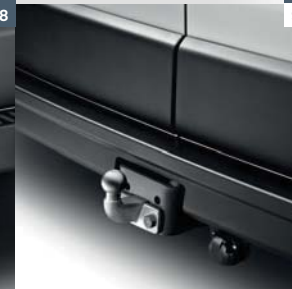
6



7



8

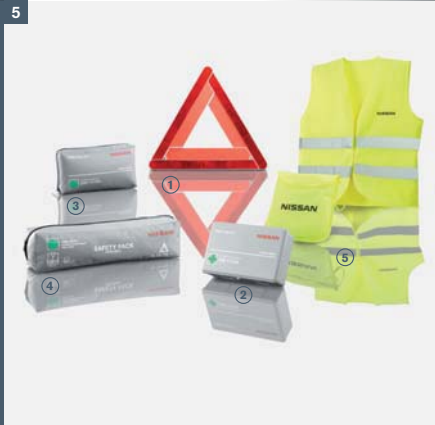


9

25
EQUIPMENT & OPTIONS

ADDED VALUE

- 1) Rear window protection grill
- 2) Textile and rubber floor mats
- 3) Fastening strap
- 4) Dual purpose connecting rod
- 5) Safety accessories
- 6) Mudguards



Safety accessories details

- ① Warning triangle
Warning triangle (set of 2)
- ② First aid kit (hard plastic box)
- ③ First aid kit (soft bag)
- ④ Safety pack
Safety pack (set of 2 warning triangles)
- ⑤ Safety jacket



26
STYLE & ACCESSORIES

USEFUL ACCESSORIES YOU'LL APPRECIATE EVERYDAY

- 7) Aluminium ladder
- 8) Cross bars
- 9) Aluminium roof rack and walkway



7



ALARM Fully compatible with the electronic system of your New NV400, the alarm protects against attempts to enter the vehicle and detects any movement in the cab interior



8 9



27
ACCESSORIES

COLOURS



Avalanche White (S)
Z09



Forest Green (S)
Z38



Blaze (S)
Z52



Citrus Yellow (S)
Z53



Tangerine (S)
Z48



Delta Blue (S)
Z39



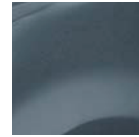
Signal Blue (S)
Z51



Silver (M)
TE KNH



Ink Blue (S)
RNQ



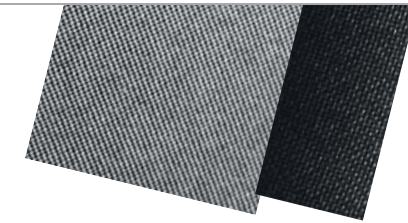
Blue grey (M)
TE J47

S: SOLID / M: METALLIC

TRIMS



DARK GREY



WHEELS



Mini wheel covers E grade



Small wheel covers SE grade



Large wheel covers accessory



16" alloy wheels accessory

The 2.3 dCi NV400 engine is available in 100HP, 125HP and 150HP versions for, FWD and RWD. It meets Euro 5 standards, and is available with standard DPF (Diesel Particle Filter).

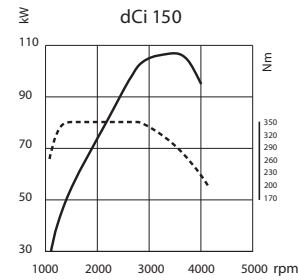
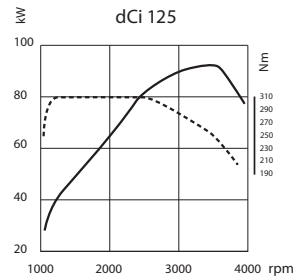
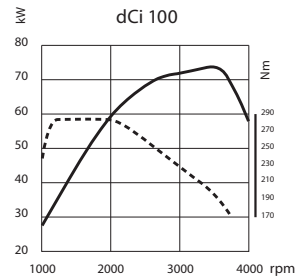
FWD ENGINE



RWD ENGINE



— Power
- - - Torque



SIX-SPEED MANUAL GEARBOX

Available with all NV400 engines. The gearbox enhances acceleration in all intermediate gears, while lowering fuel consumption and noise levels.



SIX-SPEED ROBOTIZED GEARBOX

The transmission offers many benefits: it matches individual driving style, is easy to use and is impossible to stall. Auto-adaptive gear changing characteristics ensure the engine always operates in its optimum range.

gearbox Euro 5	6-speed manual			6-speed robotized gearbox Euro 5		
ENGINE	100hp	125hp	125hp	150hp	125hp	125hp
Emission standard	Euro 5					
Diesel Particulate Filter (DPF)	Yes					
Engine capacity (cm ³)	2298					
Injection type	Commonrail					
Turbo (fixed/variable geometry)	Fixed	Fixed	Variable	Variable	Fixed	Variable
Fuel type	Diesel					
Number of cylinders	4					
Number of valves	16					
Max. engine power (KW (hp))	74 (100)	92 (125)	92 (125)	107 (145)	92 (125)	92 (125)
Max. engine power (rpm)	3500					
Max. engine torque (Nm)	285	310	310	350	310	310
Max. engine torque (rpm)	1250-2000	1250-2500	1250-2500	1500-2750	1250-2750	1250-2750
FWD PANEL VAN						
L1H1 2.8t	●	-	-	-	-	-
L1H1 3.3t	●	●	-	-	●	-
L2H2 3.3t	●	●	-	●	●	-
L2H2 3.5t	-	●	-	●	●	-
L2H3 3.5t	-	●	-	●	●	-
L3H2 3.5t	-	●	-	●	●	-
L3H3 3.5t	-	●	-	●	●	-
RWD PANEL VAN						
L3H2 3.5t	-	●	-	●	-	●
L3H2 3.5t TWR	-	-	●	●	-	●
L3H2 4.5t TWR	-	-	●	●	-	-
L3H3 3.5t	-	●	-	-	-	●
L3H3 3.5t TWR	-	-	●	●	-	●
L3H3 4.5t TWR	-	-	-	-	-	-
L4H2 3.5t TWR	-	-	●	●	-	●
L4H2 4.5t TWR	-	-	●	●	-	-
L4H3 3.5t TWR	-	-	●	●	-	●
L4H3 4.5t TWR	-	-	●	●	-	-

COMMITMENTS

YOU + NISSAN

YOU CARE ABOUT YOUR NISSAN SO NISSAN WILL CARE FOR YOU.
THAT'S WHY WE'LL MAKE THE FOLLOWING COMMITMENT:

YOU care about staying on the road when your Nissan is in for service or repair.

YOU care about quality enough to have your Nissan serviced at a Nissan dealership.

YOU care about getting the best value for money when it comes to service and repair.

YOU care about having your problems resolved quickly.

YOU care about getting the right Nissan model, engine & gear box to test drive.

NISSAN will keep you mobile free of charge.

NISSAN says thanks by giving you continuous RAC roadside assistance for free.

NISSAN will price match like for like competitor written quotes within 10 miles of your local dealer.

NISSAN will propose how to resolve any problem within 2 working days.

NISSAN will guarantee that's what you'll get when you pre-book your test drive either online or through our customer service centre.



AT NISSAN, YOU BRING OUT THE BEST IN US.

You spark our imagination. You provoke our ingenuity. You inspire us to change the rules and innovate. And at Nissan, innovation is not just about additions and extensions; it's about crossing the line to reinvent the status quo. It's about developing unexpected solutions to satisfy your wildest and most pragmatic desires. At Nissan, we design cars, accessories and services that break the mould - making the practical exciting and the exciting practical to offer you a more exhilarating driving experience everyday.



NISSAN NV400 OFFERS YOU:

- 3-YEAR OR 100,000 MILES WARRANTY, WHICHEVER COMES FIRST
- 12-YEAR ANTI-CORROSION WARRANTY
- 3-YEAR PAINT WARRANTY
- 25,000 MILES EVERY 2 YEAR SERVICE INTERVAL

YOU + NISSAN
CARE

For terms and conditions, please visit nissan.co.uk/care

32
ALL ABOUT NISSAN

[Contents](#) | [Range](#) | [Exterior design](#) | [Interior design](#) | [Technology & performance](#) | [Style & accessories](#) | [Technical specifications](#) | [Price list](#) | [Commitments](#)

[Print](#) | [Close](#)

[Page 1](#) | [Page 2](#) | [Page 3](#) | [Page 4](#) | [Page 5](#)

[REQUEST A TEST DRIVE](#)



visit our website at:
www.nissan.co.uk and www.nissan-lcv.co.uk

Every effort has been made to ensure that the content of this publication is correct at the time of going to press (January 2012). This brochure has been produced featuring prototype vehicles exhibited at motor shows. In accordance with the company's policy of continuously improving its products, Nissan International reserves the right to change at any time the specification and the vehicles described and shown in this publication. Nissan dealers will be informed of any such modifications as quickly as possible. Please check with your local Nissan dealer to receive the most up-to-date information. Because of the limitations of the printing processes used, the colours shown in this brochure may differ slightly from the actual colours of the paint and interior trim materials used. All rights reserved. Reproduction in whole or part of this brochure without the written permission of Nissan International is forbidden.

This brochure is made from chlorine free paper – NV400 FULL GEB 01/2012 – Part number 99999-53136 – Printed in EU.
Created by NEW BBDO, France – Tel.: +33 1 40 62 37 37 and produced by E-GRAPHICS\FRANCE, France – Tel.: +33 1 49 09 25 35.



SHIFT the way you move

Dealer stamp:

[REQUEST A TEST DRIVE](#)



NEW NISSAN NV400
TECHNICAL SPECIFICATIONS



[REQUEST A TEST DRIVE](#)





GRADES

The new NV400 offers great versatility with four lengths, three heights and either front or rear wheel drive. The range is powered by a new efficient 2.3 dCi engine with either 100, 125 or 150PS and an efficient 6 speed gearbox. The presence of two grades ensures that you can specify a basic workhorse or a high spec van with rear park sensors and ESP as standard.

E GRADE

SAFETY AND SECURITY

- ABS with EBD
- Driver airbag
- Mechanical key

COMFORT AND CONVENIENCE

- Radio CD with line-in
- Manual mirrors
- Manual windows
- Power assisted steering
- Fixed passenger bench seat
- 80 litre fuel tank
- Spare wheel

CARGO AREA

- Unglazed 180° opening rear doors
- Unglazed nearside (left) sliding door
- Full steel bulkhead

STYLING

- 16" steel wheel
- Small hub cap

OPTIONS

- Metallic paint

SE GRADE

ADDITIONAL SPEC TO E GRADE

SAFETY AND SECURITY

- Superlocking
- Auto door locking at 5mph
- Remote central locking (2 button key)
- ESP
- Rear parking sensors

COMFORT AND CONVENIENCE

- Bluetooth connectivity
- Power outside mirrors
- Power windows (front one-touch)
- Passenger bench, foldable central seat back with swiveling table
- Front door storage
- 100 litre fuel tank
- Cruise control
- Trip computer
- Driver armrest

CARGO AREA

- Loading mounting and lashing on rear cargo floor and body
- 12V socket in cargo area

STYLING

- Wheel cover
- Rear bumper step

OPTIONS

- Metallic paint
- Nissan Connect by Tomtom integrated satellite navigation
- Digital tachograph*
- Passenger airbag
- Limited slip differential**

OPTION PACKS

- Comfort Pack
 - Front air conditioning
 - Front foglamps
 - Pollen filter
- Glazed Rear Doors Pack
 - Full steel bulkhead with fixed window
 - Glazed rear windows
 - Heated rear screen with wiper
- Offside Door Pack
 - Offside sliding panel door
 - 270 degree unglazed rear doors 270 degree unglazed rear doors (incompatible with H1 version)

*To meet legal requirement, digital tachograph and engine speed limiter 56mph are standard on 4.5T version
 **Only available on RWD.

NV400 TECHNICAL DATA

ENGINE	6-speed manual gearbox Euro 5				6-speed semi-auto gearbox Euro 5	
	100hp	125hp	125hp	150hp	125hp	125hp
Emissions standard	Euro 5	Euro 5	Euro 5	Euro 5	Euro 5	Euro 5
Diesel Particulate Filter (DPF)	Yes	Yes	Yes	Yes	Yes	Yes
Engine capacity (cm³)	2298	2298	2298	2298	2298	2298
Injection type	Commonrail	Commonrail	Commonrail	Commonrail	Commonrail	Commonrail
Turbo (fixed/variable geometry)	Fixed	Fixed	Variable	Variable	Fixed	Variable
Fuel type	Diesel	Diesel	Diesel	Diesel	Diesel	Diesel
Number of cylinders	4	4	4	4	4	4
Number of valves	16	16	16	16	16	16
Max. engine power (KW (hp))	74 (100)	92 (125)	92 (125)	107 (145)	92 (125)	92 (125)
Max. engine power (rpm)	3500	3500	3500	3500	3500	3500
Max. engine torque (Nm)	285	310	310	350	310	310
Max. engine torque (rpm)	1250-2000	1250-2500	1250-2500	1500-2750	1250-2750	1250-2750
Fuel tank capacity (litres)	80 (105 on SE grade)	80 (105 on SE grade)	80 (105 on SE grade)	80 (105 on SE grade)	80 (105 on SE grade)	80 (105 on SE grade)
FWD PANEL VAN						
L1H1 2.8t	○					
L1H1 3.3t	○	○			○	
L2H2 3.3t	○	○		○	○	
L2H2 3.5t		○		○	○	
L2H3 3.5t		○		○	○	
L3H2 3.5t		○		○	○	
L3H3 3.5t		○		○	○	
RWD PANEL VAN						
L3H2 3.5t		○		○		○
L3H2 3.5t TWR			○	○		○
L3H2 4.5t TWR			○	○		
L3H3 3.5t		○		○		○
L3H3 3.5t TWR			○	○		○
L4H2 3.5t TWR			○	○		○
L4H2 4.5t TWR			○	○		
L4H3 3.5t TWR			○	○		○
L4H3 4.5t TWR			○	○		

TWR = Twin Wheel at Rear

○ = Available

4



FRONT WHEEL DRIVE PANEL VAN

Front Wheel Drive NV400 delivers what your business needs: greater efficiency. A lower kerb weight helps improve fuel economy, reducing your running costs. The low frame height makes loading easier and means there's more space inside, for a bigger payload. It's the Van that gives you more, but demands less.

WEIGHTS AND LOADS

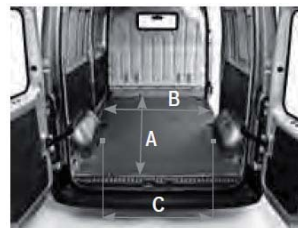
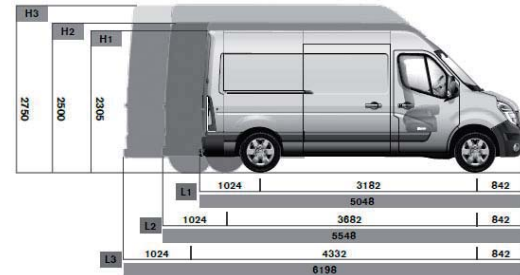
L1H1	Max. cargo volume (m³)	Max. payload (kg)	
		2.6t	3.3t
8		1030	1489
Max. weight on front / rear axle		1550 / 1650	1650 / 1900
Braked / unbraked trailer capacity		2500 / 750	

L2H2	Max. cargo volume (m³)	Max. payload (kg)	
		3.3t	3.5t
10.8		1420	1620
L2H3	12.3	n/a	1569
Max. weight on front / rear axle		1650 / 1900	1850 / 2100
Braked / unbraked trailer capacity		2500 / 750	

L3H2	Max. cargo volume (m³)	Max. payload (kg)	
		3.5t	
13		1530	
L3H3	14.8	1490	
Max. weight on front / rear axle		1850 / 2100	
Braked / unbraked trailer capacity		2500 / 750	

DIMENSIONS (mm)

	L1H1	L2H2	L2H3	L3H2	L3H3
Min. turning circle between kerbs / walls	12 /	13.6 / 14.1m		15.7 / 16.2m	
CARGO AREA					
Cargo length on floor (A)	2583	3083	3083	3733	3733
Cargo length at 1.1m above floor	2530	3030	3030	3680	3680
Cargo width (B)	1765	1765	1765	1765	1765
Width between wheelarches (C)	1380	1380	1380	1380	1380
Cargo height	1700	1894	2144	1894	2144
Min. / max. loading sill height	546 / 564	545 / 562	543 / 556	543 / 557	542 / 555
SLIDING DOORS					
Sliding door width	1050	1270	1270	1270	1270
Sliding door height	1581	1780	1780	1780	1780
REAR DOOR					
Rear door width at 169mm above floor	1580	1580	1580	1580	1580
Rear door height	1627	1820	1820	1820	1820



REAR WHEEL DRIVE PANEL VAN

Rear Wheel Drive NV400 offers practical versatility, with the capacity and strength to handle all your medium duty carrying applications. Its rear wheel drive layout creates optimum front-to-rear balance, for better payload distribution. It also ensures surefooted and stable driving characteristics when fully loaded, and makes it ideally suited for towing.

WEIGHTS AND LOADS

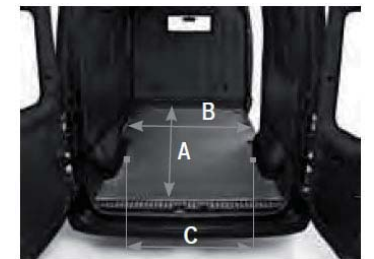
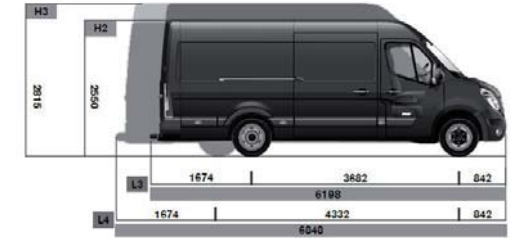
L3H2	Max. cargo volume (m³)	Max. payload (kg)		
		3.5t	3.5t TWR	4.5t TWR
12.4		1390	1254	2254
L3H3	14.2	1352	1221	n/a
Max. weight on front / rear axle		1850 / 2300	1850 / 2800	1850 / 3200
Braked / unbraked trailer capacity		2500 / 750	3000 / 750	

L4H2	Max. cargo volume (m³)	Max. payload (kg)	
		3.5t TWR	4.5t TWR
14.9		1176	2176
L4H3	17	1134	2134
Max. weight on front / rear axle		1850 / 2800	1850 / 3200
Braked / unbraked trailer capacity		3000 / 750	

DIMENSIONS (mm)

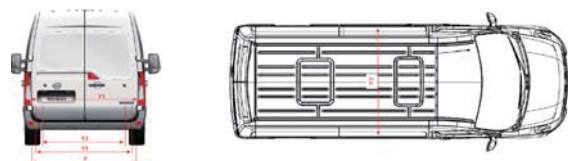
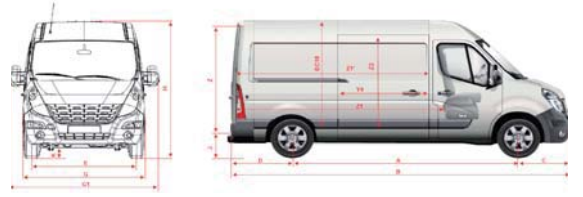
	L3H2	L3H2 TWR	L3H3	L3H3 TWR	L4H2 TWR	L4H3 TWR
Min. turning circle between kerbs / walls	13.6 / 14.1m			15.7 / 16.2m		
CARGO AREA						
Cargo length on floor (A)	3733	3733	3733	3733	4383	4383
Cargo length at 1.1m above floor	3680	3680	3680	3680	4330	4330
Cargo width (B)	1765	1765	1765	1765	1765	1765
Width between wheelarches (C)	1380	1080	1380	1080	1080	1080
Cargo height	1798	1798	2048	2048	1798	2048
Min. / max. loading sill height	674 / 696	706 / 724	672 / 694	704 / 723	701 / 717	700 / 715
SLIDING DOORS						
Sliding door width	1270	1270	1270	1270	1270	1270
Sliding door height	1684	1684	1684	1684	1684	1684
REAR DOOR						
Rear door width at 169mm above floor	1580	1580	1580	1580	1580	1580
Rear door height	1724	1724	1724	1724	1724	1724

TWR = Twin Wheel at Rear



NV400 TECHNICAL DATA SHEET

MODEL	Van FWD												Van RWD											
	L1 / WB1			L2 / WB2			L3 / WB3			L3 / WB2 + overhang			L3 / WB2 + overhang			L4 / WB3 + overhang								
Length	H1			H2			H3			H2			H3			H2			H3					
Roof height	H1			H2			H3			H2			H3			H2			H3					
Engine	100hp			125hp			150hp			125hp			150hp			125hp			150hp					
GVW	3.8T			3.8T			3.8T			3.8T			3.8T			3.8T			3.8T					
Transmission	Manual			Manual			Manual			Manual			Manual			Manual			Manual					
ENGINE																								
Engine type	MST																							
Capacity	2,298																							
Injection type	Direct Common Rail																							
Turbo (fixed geometry / variable)	TGF																							
Fuel type	Diesel																							
Number of cylinders	4																							
Number of valves	16																							
Bore x Stroke	85 x 101.3																							
Compression ratio	16																							
Catalizer and Particle Filter (DPF)	Yes																							
Max engine power	hp	100	125	100	125	145	125	145	125	145	125	145	125	145	125	145	125	145	125	145				
rpm	3500	3500	3500	3500	3500	3500	3500	3500	3500	3500	3500	3500	3500	3500	3500	3500	3500	3500	3500	3500				
Max engine torque	Nm	285	310	285	310	350	310	350	310	350	310	350	310	350	310	350	310	350	310	350				
rpm	1500-2000	1500-2000	1500-2000	1500-2000	1500-2000	1500-2000	1500-2000	1500-2000	1500-2000	1500-2000	1500-2000	1500-2000	1500-2000	1500-2000	1500-2000	1500-2000	1500-2000	1500-2000	1500-2000	1500-2000				
DRIVE TRAIN																								
Transmission	6 manual / 6 semi-auto																							
Drive / Drive Wheels	Front																							
Single / Twin rear wheel	Single rear wheel																							
CHASSIS																								
Suspension	Pseudo mac pherson front axle																							
Steering	Bi-leaf spring steel suspension rear axle																							
Braking system	Power assisted																							
Wheel size	ABS and ESP: 302 mm / 28mm front discs; 305mm / 12mm rear discs																							
Tyre size	R16 J6.5																							
PERFORMANCE																								
Min. Turning circle	kerb to kerb	12																						
	wall to wall	12.5																						
WEIGHTS																								
Gross vehicle weight	kg	2800	3300	3300	3500	3500	3500	3500	3500	3500	3500	3500	3500	3500	3500	3500	3500	3500	3500	3500				
Kerb weight	kg	1770	1811	1811	1880	1880	1880	1880	1880	1880	1880	1880	1880	1880	1880	1880	1880	1880	1880	1880				
Payload	kg	1030	1489	1489	1620	1620	1620	1620	1620	1620	1620	1620	1620	1620	1620	1620	1620	1620	1620	1620				
Gross axle weight	kg	1550	1650	1650	1650	1650	1650	1650	1650	1650	1650	1650	1650	1650	1650	1650	1650	1650	1650	1650				
Max trailer capacity	kg	3500	2500	2500	2500	2500	2500	2500	2500	2500	2500	2500	2500	2500	2500	2500	2500	2500	2500	2500				
OVERALL DIMENSIONS																								
Overall Length	B*	mm	5048	5048	5048	5548	5548	5548	5548	5548	5548	5548	5548	5548	5548	5548	5548	5548	5548	5548				
Wheelbase	A*	mm	3182	3182	3182	3682	3682	3682	3682	3682	3682	3682	3682	3682	3682	3682	3682	3682	3682	3682				
Front overhang	C*	mm	842	842	842	842	842	842	842	842	842	842	842	842	842	842	842	842	842	842				
Rear overhang	D*	mm	1024	1024	1024	1024	1024	1024	1024	1024	1024	1024	1024	1024	1024	1024	1024	1024	1024	1024				
Overall width	G*	mm	2070	2070	2070	2070	2070	2070	2070	2070	2070	2070	2070	2070	2070	2070	2070	2070	2070	2070				
Overall unladen height	H*	mm	2290	2290	2290	2482	2482	2482	2482	2482	2482	2482	2482	2482	2482	2482	2482	2482	2482	2482				
Front track	E*	mm	1750	1750	1750	1750	1750	1750	1750	1750	1750	1750	1750	1750	1750	1750	1750	1750	1750	1750				
Rear track	F*	mm	1730	1730	1730	1730	1730	1730	1730	1730	1730	1730	1730	1730	1730	1730	1730	1730	1730	1730				
Ground clearance	K*	mm	189	182	182	174	174	174	174	174	178	178	178	178	178	172	172	172	169	169				
Maximum width	J*	mm	1765	1765	1765	1765	1765	1765	1765	1765	1765	1765	1765	1765	1765	1765	1765	1765	1765	1765				
Width between wheelarches	V*	mm	1380	1380	1380	1380	1380	1380	1380	1380	1380	1380	1380	1380	1380	1380	1380	1380	1380	1380				
Maximum Height	EC18*	mm	1700	1700	1700	1894	1894	1894	1894	1894	1894	1894	1894	1894	1894	1894	1894	1894	1894	1894				
Cargo Volume	VDA measurements	m ³	8	8	8	10.8	10.8	10.8	10.8	10.8	10.8	10.8	10.8	10.8	10.8	10.8	10.8	10.8	10.8	10.8				



EMMISSIONS AND FUEL CONSUMPTION

				GVW	2.8 T	3.3 T	3.3 T	3.5 T	3.5 T
				Engine Power	100HP	100/125 HP	150 HP	125 HP	150 HP
FWD	L1H1	Fuel Consumption	Urban Cycle	l/100 km / MPG	9.7 / 29.12	9.8 / 28.82			
			Extra-urban	l/100 km / MPG	7.2 / 39.23	7.4 / 38.17			
			Combined	l/100 km / MPG	8.1 / 34.87	8.2 / 34.45			
		CO2 Emission (Combined)			gr/km	214	218		
	L2H2	Fuel Consumption	Urban Cycle	l/100 km / MPG		9.8 / 28.82	10.9 / 25.92	9.8 / 28.82	10.9 / 25.92
			Extra-urban	l/100 km / MPG		7.4 / 38.17	7.2 / 39.23	7.4 / 38.17	7.2 / 39.23
			Combined	l/100 km / MPG		8.2 / 34.45	8.6 / 32.85	8.2 / 34.45	8.6 / 32.85
		CO2 Emission (Combined)			gr/km		218	226	218
	L2H3	Fuel Consumption	Urban Cycle	l/100 km / MPG				9.9 / 28.53	10.9 / 25.92
			Extra-urban	l/100 km / MPG				7.5 / 37.66	7.4 / 38.17
			Combined	l/100 km / MPG				8.3 / 34.03	8.7 / 32.47
		CO2 Emission (Combined)			gr/km				221
	L3H2	Fuel Consumption	Urban Cycle	l/100 km / MPG				10.3 / 27.43	10.8 / 26.16
			Extra-urban	l/100 km / MPG				7.6 / 37.17	7.8 / 36.22
			Combined	l/100 km / MPG				8.6 / 32.85	8.9 / 31.74
		CO2 Emission (Combined)			gr/km				227
	L3H3	Fuel Consumption	Urban Cycle	l/100 km / MPG				10.3 / 27.43	10.8 / 26.16
			Extra-urban	l/100 km / MPG				7.6 / 37.17	7.8 / 36.22
Combined			l/100 km / MPG				8.6 / 32.85	8.9 / 31.74	
CO2 Emission (Combined)			gr/km				227	233	

				GVW	3.5 T	3.5 T	3.5 T	4.5 T	4.5 T
				Engine Power	125 HP Manul	125 HP Semi-Auto	150 HP	125 HP	150 HP
RWD	L3H2 Single Rear Wheel	Fuel Consumption	Urban Cycle	l/100 km / MPG	10.5 / 26.90	11.1 / 25.45	11.1 / 25.45		
			Extra-urban	l/100 km / MPG	8.5 / 33.23	8.6 / 32.85	8.6 / 32.85		
			Combined	l/100 km / MPG	9.3 / 30.37	9.5 / 29.73	9.5 / 29.73		
		CO2 Emission (Combined)			gr/km	245	252	252	
	L3H2 Twin Rear wheel	Fuel Consumption	Urban Cycle	l/100 km / MPG	10.0 / 28.25	10.0 / 28.25	10.0 / 28.25	10.1 / 27.97	10.1 / 27.97
			Extra-urban	l/100 km / MPG	8.9 / 31.74	8.9 / 31.74	8.9 / 31.74	8.3 / 34.03	8.3 / 34.03
			Combined	l/100 km / MPG	9.3 / 30.37	9.3 / 30.37	9.3 / 30.37	9.0 / 31.39	9.0 / 31.39
		CO2 Emission (Combined)			gr/km	245	245	245	237
	L3H3 Single Rear Wheel	Fuel Consumption	Urban Cycle	l/100 km / MPG	10.8 / 26.16	11.3 / 25.00	11.3 / 25.00		
			Extra-urban	l/100 km / MPG	8.6 / 32.85	8.9 / 31.74	8.9 / 31.74		
			Combined	l/100 km / MPG	9.4 / 30.05	9.8 / 28.82	9.8 / 28.82		
		CO2 Emission (Combined)			gr/km	249	260	260	
	L3H3 Twin Rear Wheel	Fuel Consumption	Urban Cycle	l/100 km / MPG	10.1 / 27.97	10.1 / 27.97	10.1 / 27.97		
			Extra-urban	l/100 km / MPG	9.0 / 31.39	9.0 / 31.39	9.0 / 31.39		
			Combined	l/100 km / MPG	9.4 / 30.05	9.4 / 30.05	9.4 / 30.05		
		CO2 Emission (Combined)			gr/km	249	249	249	
	L4H2	Fuel Consumption	Urban Cycle	l/100 km / MPG	10.1 / 27.97	10.1 / 27.97	10.1 / 27.97	10.1 / 27.97	10.1 / 27.97
			Extra-urban	l/100 km / MPG	9.0 / 31.39	9.0 / 31.39	9.0 / 31.39	8.3 / 34.03	8.3 / 34.03
Combined			l/100 km / MPG	9.4 / 30.05	9.4 / 30.05	9.4 / 30.05	9.0 / 31.39	9.0 / 31.39	
CO2 Emission (Combined)			gr/km	249	249	249	237	237	
L4H3	Fuel Consumption	Urban Cycle	l/100 km / MPG	10.1 / 27.97	10.1 / 27.97	10.1 / 27.97	10.1 / 27.97	10.1 / 27.97	
		Extra-urban	l/100 km / MPG	9.0 / 31.39	9.0 / 31.39	9.0 / 31.39	8.3 / 34.03	8.3 / 34.03	
		Combined	l/100 km / MPG	9.4 / 30.05	9.4 / 30.05	9.4 / 30.05	9.0 / 31.39	9.0 / 31.39	
	CO2 Emission (Combined)			gr/km	249	249	249	237	237

11



SHIFT_ is an English word from a Japanese car company that best embraces our values and the mission of this corporation. No matter where you are in the world, SHIFT_ is the way we express who we are, how we work and what we are trying to accomplish. Everything we touch, we SHIFT_. And everything we SHIFT_ we try to make better and uniquely Nissan.

Visit our websites at:
www.nissan.co.uk
www.nissan-lcv.co.uk

Dealer stamp:



SHIFT_ the way you move

Every effort has been made to ensure that the content of this publication is correct at the time of going to press (October 2011). Vehicle shown with accessory wheel covers. In accordance with the company's policy of continuously improving its products, Nissan Europe reserves the right to change at any time the specification and the vehicles described and shown in this publication. Nissan dealers will be informed of any such modifications as quickly as possible. Please check with your local Nissan dealer to receive the most up-to-date information. All rights reserved. Reproduction in whole or part of this brochure without the written permission of Nissan Europe is forbidden.

Part Number 99999-53138. Printed in the UK.



[Contents](#) | [Range](#) | [Exterior design](#) | [Interior design](#) | [Technology & performance](#) | [Style & accessories](#) | [Technical specifications](#) | [Price list](#) | [Commitments](#)

[Print](#) | [Close](#)

[NV400 Model and option prices](#) | [Further Information](#)

[REQUEST A TEST DRIVE](#)



NV400 VAN

Body	Drive Wheel	Wheel Base	Roof	GVW (kg)	Payload (kg)	Engine	Power (PS)	Transmission	Grade	Rear Wheel	Basic Delivered	VED + 1st Reg	Basic On The Road
Panel Van	Front	L1	H1	2,800	1,030	2.3dCi	100	6 manual	E	Single	18,995	270	19,265
Panel Van	Front	L1	H1	3,300	1,489	2.3dCi	100	6 manual	SE	Single	20,695	270	20,965
Panel Van	Front	L1	H1	3,300	1,489	2.3dCi	125	6 manual	SE	Single	21,595	270	21,865
Panel Van	Front	L1	H1	3,300	1,489	2.3dCi	125	6 Semi-Auto	SE	Single	22,395	270	22,665
Panel Van	Front	L2	H2	3,300	1,420	2.3dCi	100	6 manual	E	Single	21,395	270	21,665
Panel Van	Front	L2	H2	3,300	1,420	2.3dCi	125	6 manual	SE	Single	22,995	270	23,265
Panel Van	Front	L2	H2	3,300	1,420	2.3dCi	125	6 Semi-Auto	SE	Single	23,795	270	24,065
Panel Van	Front	L2	H2	3,300	1,420	2.3dCi	150	6 manual	SE	Single	23,895	270	24,165
Panel Van	Front	L2	H2	3,500	1,620	2.3dCi	125	6 manual	SE	Single	23,695	270	23,965
Panel Van	Front	L2	H2	3,500	1,620	2.3dCi	125	6 Semi-Auto	SE	Single	24,495	270	24,765
Panel Van	Front	L2	H2	3,500	1,620	2.3dCi	150	6 manual	SE	Single	24,595	270	24,865
Panel Van	Front	L2	H3	3,500	1,569	2.3dCi	125	6 manual	SE	Single	24,195	270	24,465
Panel Van	Front	L2	H3	3,500	1,569	2.3dCi	125	6 Semi-Auto	SE	Single	24,995	270	25,265
Panel Van	Front	L2	H3	3,500	1,569	2.3dCi	150	6 manual	SE	Single	25,095	270	25,365
Panel Van	Front	L3	H2	3,500	1,530	2.3dCi	125	6 manual	SE	Single	24,595	270	24,865
Panel Van	Front	L3	H2	3,500	1,530	2.3dCi	125	6 Semi-Auto	SE	Single	25,395	270	25,665
Panel Van	Front	L3	H2	3,500	1,530	2.3dCi	150	6 manual	SE	Single	25,495	270	25,765
Panel Van	Front	L3	H3	3,500	1,490	2.3dCi	125	6 manual	SE	Single	25,095	270	25,365
Panel Van	Front	L3	H3	3,500	1,490	2.3dCi	125	6 Semi-Auto	SE	Single	25,895	270	26,165
Panel Van	Front	L3	H3	3,500	1,490	2.3dCi	150	6 manual	SE	Single	25,995	270	26,265
Panel Van	Rear	L3	H2	3,500	1,390	2.3dCi	125	6 manual	SE	Single	25,395	270	25,665

REQUEST A TEST DRIVE

Body	Drive Wheel	Wheel Base	Roof	GVW (kg)	Payload (kg)	Engine	Power (PS)	Transmission	Grade	Rear Wheel	Basic Delivered	VED + 1st Reg	Basic On The Road
Panel Van	Rear	L3	H2	3,500	1,254	2.3dCi	125	6 manual	SE	Twin	26,895	270	27,165
Panel Van	Rear	L3	H2	3,500	1,254	2.3dCi	125	6 Semi-Auto	SE	Twin	27,695	270	27,965
Panel Van	Rear	L3	H2	3,500	1,254	2.3dCi	150	6 manual	SE	Twin	27,795	270	28,065
Panel Van	Rear	L3	H3	3,500	1,352	2.3dCi	125	6 manual	SE	Single	25,895	270	26,165
Panel Van	Rear	L3	H3	3,500	1,221	2.3dCi	125	6 manual	SE	Twin	27,395	270	27,665
Panel Van	Rear	L3	H3	3,500	1,221	2.3dCi	125	6 Semi-Auto	SE	Twin	28,195	270	28,465
Panel Van	Rear	L3	H3	3,500	1,221	2.3dCi	150	6 manual	SE	Twin	28,295	270	28,565
Panel Van	Rear	L4	H2	3,500	1,176	2.3dCi	125	6 manual	SE	Twin	27,795	270	28,065
Panel Van	Rear	L4	H2	3,500	1,176	2.3dCi	125	6 Semi-Auto	SE	Twin	28,595	270	28,865
Panel Van	Rear	L4	H2	3,500	1,176	2.3dCi	150	6 manual	SE	Twin	28,695	270	28,965
Panel Van	Rear	L4	H3	3,500	1,134	2.3dCi	125	6 manual	SE	Twin	28,295	270	28,565
Panel Van	Rear	L4	H3	3,500	1,134	2.3dCi	125	6 Semi-Auto	SE	Twin	29,095	270	29,365
Panel Van	Rear	L4	H3	3,500	1,134	2.3dCi	150	6 manual	SE	Twin	29,195	270	29,465
Panel Van	Rear	L3	H2	4,500	2,254	2.3dCi	125	6 manual	SE	Twin	27,745	220	27,965
Panel Van	Rear	L3	H2	4,500	2,254	2.3dCi	150	6 manual	SE	Twin	28,645	220	28,865
Panel Van	Rear	L4	H2	4,500	2,176	2.3dCi	125	6 manual	SE	Twin	28,645	220	28,865
Panel Van	Rear	L4	H2	4,500	2,176	2.3dCi	150	6 manual	SE	Twin	29,545	220	29,765
Panel Van	Rear	L4	H3	4,500	2,134	2.3dCi	125	6 manual	SE	Twin	29,145	220	29,365
Panel Van	Rear	L4	H3	4,500	2,134	2.3dCi	150	6 manual	SE	Twin	30,045	220	30,265
Crew Van	Front	L2	H2	3,500	1,398	2.3dCi	100	6 manual	SE	Single	25,295	270	25,565
Crew Van	Front	L2	H2	3,500	1,398	2.3dCi	125	6 manual	SE	Single	26,195	270	26,465
Crew Van	Rear	L3	H2	3,500	1,176	2.3dCi	125	6 manual	SE	Single	27,895	270	28,165

NV400 OPTIONS

	E	SE FWD	SE 3.5T RWD	SE 4.5T RWD	SE Crew Van	Basic Price
Metallic paint	○	○	○	○	○	350.00
Nissan Connect by Tomtom navigation		○	○	○	○	650.00
Digital tachograph#		○	○	●	○	550.00
Passenger airbag		○	○	○	●	250.00
Limited Slip Differential			○	○		500.00
OPTION PACKS						
Comfort pack		○	○	○	○	750.00
- Front air conditioning						
- Front foglamp						
- Pollen filter						
Rear glazing pack		○	○	○		250.00
- Full steel bulkhead with fixed window						
- Glazed rear doors						
- Heated rear screen with wiper						
Offside door pack		○	○	○		375.00
- Offside sliding panel door						
- 270 degree unglazed rear doors, incompatible with H1 version						

For latest information on options that can be combined together, please contact your local Nissan Dealer
 #Digital tachograph is recommended for towing when the GTW is above 3500kg to meet EU and UK legislation.

Optional - ○ Standard - ● Optional Dealer Fit - □



1. Ladder



2. Towbar



3. Reversing Camera



4. Aluminium Roof Rack
5. Aluminium Walkway



[REQUEST A TEST DRIVE](#)

NV400 ACCESSORIES

	E	SE FWD	SE 3.5T RWD	SE 4.5T RWD	SE Crew Van	Basic Price
Mats, Rubber (front)	<input type="checkbox"/>	<input type="checkbox"/>	<input type="checkbox"/>	<input type="checkbox"/>	<input type="checkbox"/>	35.20
Mudguards (front and rear)	<input type="checkbox"/>	<input type="checkbox"/>	<input type="checkbox"/>		<input type="checkbox"/>	145.55
Mudguards (front and rear) - Twin wheels			<input type="checkbox"/>	<input type="checkbox"/>		145.00
Park Sensors (rear)	<input type="checkbox"/>	●	●	●	●	304.34
Reversing Camera and Screen	<input type="checkbox"/>	<input type="checkbox"/>	<input type="checkbox"/>	<input type="checkbox"/>	<input type="checkbox"/>	437.50
Alarm		<input type="checkbox"/>	<input type="checkbox"/>	<input type="checkbox"/>	<input type="checkbox"/>	288.75
Aluminium Roof Rack L1 H1	<input type="checkbox"/>	<input type="checkbox"/>				1,000.00
Aluminium Roof Rack L2 H2	<input type="checkbox"/>	<input type="checkbox"/>			<input type="checkbox"/>	1,097.50
Aluminium Roof Rack L3 H2		<input type="checkbox"/>	<input type="checkbox"/>	<input type="checkbox"/>	<input type="checkbox"/>	1,251.25
Aluminium Walkway L1	<input type="checkbox"/>	<input type="checkbox"/>				287.50
Aluminium Walkway L2	<input type="checkbox"/>	<input type="checkbox"/>			<input type="checkbox"/>	317.50
Aluminium Walkway L3		<input type="checkbox"/>	<input type="checkbox"/>	<input type="checkbox"/>	<input type="checkbox"/>	347.50
Ladder	<input type="checkbox"/>	<input type="checkbox"/>	<input type="checkbox"/>	<input type="checkbox"/>	<input type="checkbox"/>	300.00
Roof bars	<input type="checkbox"/>	<input type="checkbox"/>	<input type="checkbox"/>	<input type="checkbox"/>	<input type="checkbox"/>	354.25
Towbar Flanged with coupling jaw pin ball*	<input type="checkbox"/>	<input type="checkbox"/>	<input type="checkbox"/>	<input type="checkbox"/>	<input type="checkbox"/>	519.95

* Alternative towbar options available. Please check with your local dealer for further information and prices.

Dealer fit option prices include fitting but are only a guide. Please check with your local Nissan dealer for exact prices

Standard - ● Optional - ○ Optional Dealer Fit - □



NV400 MINIBUS

Body	Drive Wheel	Wheel Base	Roof	GVW (kg)	Payload (kg)	Engine	Power (PS)	Transmission	Grade	Rear Wheel	Basic Delivered	VAT	Total Retail	VED + 1st Reg	On The Road
Minibus	Front	L1	H1	3,300	1,223	2.3dCi	100	6 manual	SE	Single	21,600	4,320	25,920	655	26,575
Minibus	Front	L1	H1	3,300	1,223	2.3dCi	125	6 manual	SE	Single	22,500	4,500	27,000	655	27,655
Minibus	Front	L1	H1	3,300	1,223	2.3dCi	125	6 Semi-Auto	SE	Single	23,300	4,660	27,960	515	28,475
Minibus	Front	L2	H2	3,500	1,341	2.3dCi	125	6 manual	SE	Single	23,400	4,680	28,080	655	28,735
Minibus	Front	L2	H2	3,500	1,341	2.3dCi	125	6 Semi-Auto	SE	Single	24,200	4,840	29,040	515	29,555

Basic and Total Retail prices include delivery to the Dealership and number plates. On The Road price includes VAT and 12 months Government Vehicle Excise Duty and Government First Registration fee of £55.

NV400 MINIBUS OPTIONS

	SE	Basic Price	VAT	Total
Matellic paint	<input type="radio"/>	350	70	420
Nissan connect by Tomtom navigation	<input type="radio"/>	650	130	780
Digital Tachograph and Towbar	<input type="radio"/>	825	165	990
OPTION PACKS				
Comfort pack	<input type="radio"/>	800	160	960
- Front air conditioning and Pollen filter				
- Front foglamp				
- Intelligent Wipers				
- Automatic Lighting System				
Premium comfort pack	<input type="radio"/>	2,500	500	3,000
- Front and Rear air conditioning and Pollen filter				
- Front foglamp				
- Intelligent Wipers				
- Automatic Lighting System				
Combi cargo	<input type="radio"/>	-1,200	-240	-1,440
- Removal of 3rd row seats*				

* no cost option for L2 variants

Optional -





[Contents](#) | [Range](#) | [Exterior design](#) | [Interior design](#) | [Technology & performance](#) | [Style & accessories](#) | [Technical specifications](#) | [Price list](#) | [Commitments](#) [Print](#) | [Close](#)

[NV400 Model and option prices](#) | [Further Information](#)

[Page 1](#) | [Page 2](#) | [Page 3](#) | [Page 4](#) | [Page 5](#) | [Page 6](#) | [Page 7](#) | [Page 8](#) | [Page 9](#) nBSYW# nBSYW## nBSYW#\$ nBSYW#%

[REQUEST A TEST DRIVE](#)



NV400 CHASSIS

Body	Drive Wheel	Wheel Base	Cabin	GVW (kg)	Payload (kg)	Engine	Power (PS)	Transmission	Grade	Rear Wheel	Basic Delivered	VED + 1st Reg	Basic On The Road
Chassis	Front	L2	Single	3,500	1,814	2.3dCi	125	6 manual	E	Single	20,895	270	21,165
Chassis	Front	L2	Single	3,500	1,814	2.3dCi	125	6 manual	SE	Single	21,595	270	21,865
Chassis	Front	L3	Single	3,500	1,794	2.3dCi	125	6 manual	SE	Single	22,295	270	22,565
Chassis	Front	L3	Double	3,500	1,586	2.3dCi	125	6 manual	SE	Single	23,295	270	23,565
Chassis	Front	L3	Single	3,500	1,794	2.3dCi	150	6 manual	SE	Single	23,195	270	23,465
Chassis	Front	L3	Double	3,500	1,586	2.3dCi	150	6 manual	SE	Single	24,195	270	24,465
Chassis	Rear	L3	Single	3,500	1,525	2.3dCi	125	6 manual	SE	Twin	24,595	270	24,865
Chassis	Rear	L3	Double	3,500	1,346	2.3dCi	125	6 manual	SE	Twin	25,595	270	25,865
Chassis	Rear	L3	Single	3,500	1,525	2.3dCi	150	6 manual	SE	Twin	25,495	270	25,765
Chassis	Rear	L3	Double	3,500	1,346	2.3dCi	150	6 manual	SE	Twin	26,495	270	26,765
Chassis	Rear	L4	Single	3,500	1,495	2.3dCi	125	6 manual	SE	Twin	25,295	270	25,565
Chassis	Rear	L4	Double	3,500	1,277	2.3dCi	125	6 manual	SE	Twin	26,545	270	26,815
Chassis	Rear	L4	Single	3,500	1,495	2.3dCi	150	6 manual	SE	Twin	26,195	270	26,465
Chassis	Rear	L4	Double	3,500	1,277	2.3dCi	150	6 manual	SE	Twin	27,445	270	27,715



[Contents](#) | [Range](#) | [Exterior design](#) | [Interior design](#) | [Technology & performance](#) | [Style & accessories](#) | [Technical specifications](#) | [Price list](#) | [Commitments](#)

[Print](#) | [Close](#)

[NV400 Model and option prices](#) | [Further Information](#)

[Page 1](#) | [Page 2](#) | [Page 3](#) | [Page 4](#) | [Page 5](#) | [Page 6](#) | [Page 7](#) | [Page 8](#) | [Page 9](#) nBSYW#" nBSYW## nBSYW#\$ nBSYW#%

[REQUEST A TEST DRIVE](#)



Body	Drive Wheel	Wheel Base	Cabin	GVW (kg)	Payload (kg)	Engine	Power (PS)	Transmission	Grade	Rear Wheel	Basic Delivered	VED + 1st Reg	Basic On The Road
Dropside	Front	L2	Single	3,500	1,462	2.3dCi	125	6 manual	E	Single	23,095	270	23,365
Dropside	Front	L2	Single	3,500	1,462	2.3dCi	125	6 manual	SE	Single	23,795	270	24,065
Dropside	Front	L3	Single	3,500	1,390	2.3dCi	125	6 manual	SE	Single	24,695	270	24,965
Dropside	Front	L3	Double	3,500	1,234	2.3dCi	125	6 manual	SE	Single	25,495	270	25,765
Dropside	Front	L3	Single	3,500	1,390	2.3dCi	150	6 manual	SE	Single	25,595	270	25,865
Dropside	Front	L3	Double	3,500	1,234	2.3dCi	150	6 manual	SE	Single	26,395	270	26,665
Dropside	Rear	L3	Single	3,500	1,137	2.3dCi	125	6 manual	SE	Twin	26,995	270	27,265
Dropside	Rear	L3	Double	3,500	991	2.3dCi	125	6 manual	SE	Twin	27,795	270	28,065
Dropside	Rear	L3	Single	3,500	1,137	2.3dCi	150	6 manual	SE	Twin	27,895	270	28,165
Dropside	Rear	L3	Double	3,500	991	2.3dCi	150	6 manual	SE	Twin	28,695	270	28,965
Dropside	Rear	L4	Single	3,500	1,051	2.3dCi	125	6 manual	SE	Twin	28,095	270	28,365
Dropside	Rear	L4	Double	3,500	889	2.3dCi	125	6 manual	SE	Twin	28,945	270	29,215
Dropside	Rear	L4	Single	3,500	1,051	2.3dCi	150	6 manual	SE	Twin	28,995	270	29,265
Dropside	Rear	L4	Double	3,500	889	2.3dCi	150	6 manual	SE	Twin	29,845	270	30,115

Body	Drive Wheel	Wheel Base	Cabin	GVW (kg)	Payload (kg)	Engine	Power (PS)	Transmission	Grade	Rear Wheel	Basic Delivered	VED + 1st Reg	Basic On The Road
Tipper	Front	L2	Single	3,500	1,227	2.3dCi	125	6 manual	E	Single	24,495	270	24,765
Tipper	Front	L2	Single	3,500	1,227	2.3dCi	125	6 manual	SE	Single	25,195	270	25,465
Tipper*	Front	L3	Single	3,500	1,252	2.3dCi	125	6 manual	SE	Single	25,895	270	26,165
Tipper	Front	L3	Double	3,500	998	2.3dCi	125	6 manual	SE	Single	26,895	270	27,165
Tipper*	Front	L3	Single	3,500	1,217	2.3dCi	150	6 manual	SE	Single	26,795	270	27,065
Tipper*	Front	L3	Double	3,500	1,048	2.3dCi	150	6 manual	SE	Single	27,795	270	28,065
Tipper*	Rear	L3	Single	3,500	1,098	2.3dCi	125	6 manual	SE	Twin	28,195	270	28,465
Tipper*	Rear	L3	Double	3,500	894	2.3dCi	125	6 manual	SE	Twin	29,195	270	29,465
Tipper*	Rear	L3	Single	3,500	1,063	2.3dCi	150	6 manual	SE	Twin	29,095	270	29,365
Tipper*	Rear	L3	Double	3,500	859	2.3dCi	150	6 manual	SE	Twin	30,095	270	30,365
Tipper*	Rear	L4	Double	3,500	856	2.3dCi	125	6 manual	SE	Twin	30,145	270	30,415
Tipper*	Rear	L4	Double	3,500	821	2.3dCi	150	6 manual	SE	Twin	31,045	270	31,315

*Special build vehicles may be subject to extended delivery. The Basic Delivered prices excludes VAT but includes delivery to the dealership and number plates. The Basic On The Road price excludes VAT but includes delivery to the dealership, number plates, 12 months Vehicle Excise Duty (£215) and Government First Registration Fee of £55.

NV400 CONVERSION OPTIONS

	E	SE FWD	SE RWD	Basic Price
Metallic paint	○	○	○	350
Nissan connect by Tomtom navigation		○	○	650
Digital Tachograph*		○	○	550
Passenger airbag		○	○	250
Limited Slip Differential			○	500
Mats, Rubber (front)	□	□	□	35.20
Mudguards (front and rear)	□	□		145.55
Mudguards (front and rear) - Twin wheels			□	145.00
Alarm		□	□	288.75
Reversing Camera and Screen	□	□	□	437.50
Towbar Flanged with coupling jaw pin ball*	□	□	□	519.95
OPTION PACKS				
Comfort pack		○	○	750
- Front air conditioning				
- Front foglamp				
- Pollen filter				

Standard - ● Optional - ○ Optional Dealer Fit - □

Dealer fit option prices include fitting but are only a guide. Please check with your local Nissan dealer for exact prices

*Digital tachograph is recommended for towing when the GTW is above 3500kg to meet EU and UK legislation.

* Alternative towbar options available. Please check with your local dealer for further information and prices.

NISSAN VAN INSURANCE

Did you know you can insure your van through Nissan Insurance?

With Nissan Van Insurance, you can be sure that you'll get the right cover at a great price. You'll also be dealing with people who really understand the way your business works. We know you want to save money, so our premiums are price-matched against the UK's leading insurers to give you great value.

Benefits include:

- Fully comprehensive cover available for virtually any type of business use
- 24/7 accident recovery helpline
- Discounts for branded vans and fixtures such as ladder holders
- Windscreen cover included as standard
- All repairs carried out in a Nissan dealership/Nissan approved repair centre
- All repairs carried out using Nissan Genuine Parts
- Like-for-like replacement provided if your vehicle is written off in the first 12 months

Call for a quote today on **0800 011 3528** and find out just how much money you could save with Nissan Van Insurance.

All quotes are based on individual circumstances and are subject to insurer's underwriting criteria. Terms and conditions apply, Nissan Insurance is arranged and administered by Equity Insurance Brokers Limited, which is authorised and regulated by the Financial Services Authority. Registered Office: Library House, New Road, Brentwood, Essex CM 14 4GD. Registered in England No. 258414. Nissan Motor (GB) Limited is authorised and regulated by the Financial Services Authority.

FURTHER INFORMATION

Price Protection Plan. Order a new Nissan for delivery no more than 4 weeks in advance and the price you are quoted is the price you pay. This is irrespective of any subsequent price rises between placing your order and delivery of your new vehicle. Nissan Motor (GB) is not liable for price adjustments caused by Government changes in the rate of VAT or by any other applicable legislation or regulation or Vehicle Excise Duty.

Navara - Three year/60,000 miles manufacturer's warranty - Nissan's comprehensive warranty provides cover for your new Nissan from defects in materials or workmanship. Your vehicle is covered in all European Countries where Authorised Nissan Dealers are located. If your vehicle becomes inoperative due to warrantable defects, a towing service, when necessary, to the Authorised Dealer is covered. If a warrantable defect abroad takes more than six hours to repair, the Touring Assistance Programme will pay for a hotel or rental car to a certain maximum. The paint warranty covers painted body parts (excluding the underbody) for three years regardless of mileage driven. For further details please contact your local Authorised Nissan Dealer.

LCV model (including NV200, Primastar, NV400 and Cabstar) - New Vehicle Warranty is issued by Nissan International SA is valid for 3 years from the warranty start date or 60,000 miles, whichever comes first. In addition, for each new LCV model (including NV200, Primastar, NV400 and Cabstar) sold by an authorised UK Nissan dealer, Nissan Motor (GB) Limited (NMGB) will issue an extension to the New Vehicle Warranty. This warranty extension will cover your vehicle from 60,000 miles up to 100,000 miles or 3 years from the warranty start date, whichever comes first. Please note that audio and navigation units will not be covered by the warranty extension.

Special build conversions may be subject to extended delivery.

The conversions in this price list are from Nissan Motor GB-appointed converters and have warranty terms in line with the Nissan Pan European Warranty. The converter is responsible for all aspects of the conversion.

Nissan European Roadside Assistance is provided for the first three years of your van's life. Please see www.nissan-aftersales.co.uk for full details including terms and conditions.

Recyclability - we take our environmental responsibilities very seriously - innovation today comes with a deep respect for the environment. Our engines are now much more unobtrusive and their emissions have been considerably reduced. All our vehicles are designed with recycling in mind.

All prices in this list are quoted in pounds sterling. Value Added Tax (VAT) has been calculated at 20%. Accessory prices are subject to change, please see your nearest dealership for the most up to date prices.

While all reasonable effort has been made to ensure the accuracy of the information provided, due to Nissan's policy of continuous product improvement, all particulars contained are subject to constant revision and Nissan reserves the right to change, alter or modify among other things, specifications, colours and prices of models without notice at any time. Accordingly you should consult your local Nissan Dealer for the exact introduction dates of all models and for the most up-to-date information.



YOU + NISSAN

CARE

You care about the car you drive. So do we. That's why we're making a commitment to providing the best customer service in the market.

Find out more nissan.co.uk/care



REQUEST A TEST DRIVE



Nissan cares for you because you care about your Nissan.
That's why we'll make the following commitment:

YOU care about staying on the road when your Nissan is in for service or repair.

YOU care about quality enough to have your Nissan serviced at a Nissan dealership.

YOU care about getting the best value for money when it comes to service and repair.

YOU care about having your problems resolved quickly.

YOU care about getting the right Nissan model, engine & gear box to test drive.

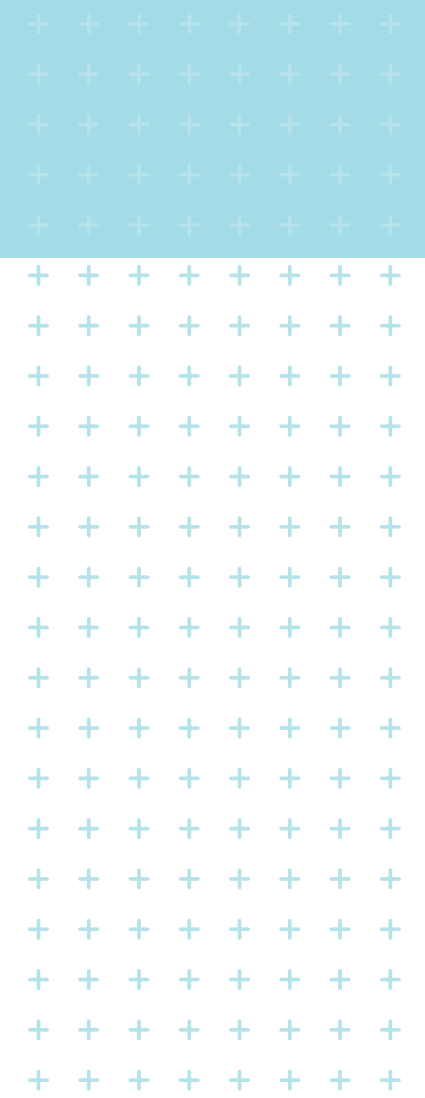
NISSAN will keep you mobile free of charge.

NISSAN says thanks by giving you continuous Nissan roadside assistance for free.

NISSAN will price match like for like competitor written quotes within 10 miles of your local dealer.

NISSAN will propose how to resolve any problem within 2 working days.

NISSAN will guarantee that's what you'll get when you pre-book your test drive either online or through our customer service centre.



Find out more nissan.co.uk/care





NV200



NV400



Cabstar

SHIFT_ is an English word from a Japanese car company that best embraces our values and the mission of this corporation. No matter where you are in the world, SHIFT_ is the way we express who we are, how we work and what we are trying to accomplish.

Everything we touch, we SHIFT_. And everything we SHIFT_ we try to make better and uniquely Nissan.

NISSAN MOTOR (GB) LIMITED

The Rivers Office Park
Denham Way
Maple Cross
Rickmansworth
Hertfordshire
WD3 9YS

Visit our website at: www.nissan.co.uk

Dealer stamp:



Part Number: 99999-53147

Prices effective from 1st June 2012 unless otherwise stated.