



SHIFT_

NISSAN X-TRAIL



[Contents](#) | [Exterior design](#) | [Interior design](#) | [Technology & performance](#) | [Style & accessories](#) | [Technical Specifications](#) | [Price List](#) | [Commitments](#)

[Print](#) | [Close](#)

[REQUEST A TEST DRIVE](#)





BROADEN YOUR HORIZONS NISSAN X-TRAIL

EXPERIENCE THE COMFORT, SECURITY AND 4X4-i VERSATILITY OF NISSAN X-TRAIL: OFF-ROAD INTELLIGENCE ON THE ROAD, BECAUSE THE ULTIMATE DESTINATION IS ALWAYS ADVENTURE.

LOOK & FEEL

EXTERIOR DESIGN	4
INTERIOR DESIGN	10

TECHNOLOGY & PERFORMANCE

NISSAN CONNECT & AROUND VIEW MONITOR	14
ALL MODE 4X4-i	16
SAFETY AND SECURITY	18
STORAGE SPACE	22

STYLE & ACCESSORIES

ACCESSORIES	24
COLOURS/TRIMS	26
ALL ABOUT NISSAN	28

more on www.nissan.co.uk/x-trail



PICTURE YOURSELF

BRING IT INTO FOCUS.

Space, freedom and total peace of mind: this is X-TRAIL territory. Knowing that everything is possible, you'll surprise yourself.



4
LOOK & FEEL



5
EXTERIOR DESIGN

[Contents](#) | [Exterior design](#) | [Interior design](#) | [Technology & performance](#) | [Style & accessories](#) | [Technical Specifications](#) | [Price List](#) | [Commitments](#)

[Print](#) | [Close](#)

[Page 1](#) | [Page 2](#) | [Page 3](#)

[REQUEST A TEST DRIVE](#)



BOLD FACE, STRONG HEART

ABSORB THE IMPACT. With a sloping front grille and dynamic teardrop headlight design, X-TRAIL's well-rounded, athletic looks embody vigorous intelligence.



REQUEST A TEST DRIVE





8
LOOK & FEEL

KEEP YOUR OPTIONS OPEN

BE SPONTANEOUS.

Thanks to X-TRAIL's comfort, versatility and superior 4X4-i capabilities, you'll always be looked after on the road.

9
EXTERIOR DESIGN

[Contents](#) | [Exterior design](#) | [Interior design](#) | [Technology & performance](#) | [Style & accessories](#) | [Technical Specifications](#) | [Price List](#) | [Commitments](#)

[Print](#) | [Close](#)

[Page 1](#) | [Page 2](#) | [Page 3](#)

[REQUEST A TEST DRIVE](#)



LET THE WORLD IN

X-TRAIL pushes the frontiers, with a fully opening electric sunroof almost 80CM long, so everyone in the front and back can enjoy pure light and breathe in fresh air.

10
LOOK & FEEL



SPACE TO ESCAPE

ROOMY & INVITING. X-TRAIL brings fresh meaning to comfort and ergonomics. The light and airy interior means that even with five people on board you can relax and feel totally at ease.

11
INTERIOR DESIGN





SIMPLE AND SECURE. There are buttons on the steering wheel to control your Bluetooth® phone so you can link it to the car's audio system without even taking it out of your pocket. You can also control the audio system, adjust the volume and select radio stations without ever removing your hands from the leather steering wheel.



DEDICATED MP3 AND USB SLOT: just plug in, turn on and push AUX for your favourite tracks live and direct.



X-TRAIL'S UNIQUE self-contained low pressure automatic air conditioning system sets new standards in cabin ventilation. Just select your preferred temperature and bring refreshment and comfort to all.



NATURAL COMMAND AND CONTROL

EXTREMELY SOPHISTICATED but incredibly easy to use, X-TRAIL's high-tech console and logically-placed controls make driving easy. Its refreshed cockpit welcomes you with an ultra-clear combimeter for safer reading and standard features make life easier such as cruise control, Bluetooth connectivity, rain sensing wipers, automatic headlights and electrically adjustable and heated door mirrors.

Features are grade specific, please see UK specification guide for full details





USE YOUR EAGLE EYE

PARK WITH FINESSE THANKS TO AROUND VIEW MONITOR. WITH ITS 360° VIEW CAMERA IT GIVES YOU A FULL PANORAMA OF YOUR SELECTED SPOT SO THAT YOU CAN MANOEUVRE WITH MAXIMUM PRECISION.



SHARPEN YOUR VISION
Using 4 separate wide angle cameras, Nissan Around View Monitor converts the original image on your navigation screen into a bird's eye view. Simple to use – at the touch of one single button you can change from one view to another.



MOVE ON IN
Position your X-TRAIL within the coloured moving lines defining your space and enjoy a perfect parking moment.

Features are grade specific, please see UK specification guide for full details.



GO FORWARD WITH COMPLETE CONFIDENCE

MANOEUVRE WITH MAXIMUM VISION, INSIGHT AND ENTERTAINMENT THANKS TO NISSAN CONNECT: YOUR AUDIO, COMMUNICATIONS AND NAVIGATION SYSTEM.



KEEP A BEADY EYE. Nissan Connect's 5" colour touch screen gives you a 3D display of the road ahead and a map view of your route at the same time. It also displays optimal routes, music and info-alerts and even your phonebook and personal files.



ALL MODE 4x4-i

ON
OFF

4X MORE CONTROL

DOWNHILL SUPPORT



X-TRAIL BRINGS YOU

off road intelligence and exceptional agility on the road. Thanks to the ingenious ALL MODE 4X4-i and braked LSD, power is transmitted to the wheels with increased grip. The power distribution ranges from 100% front wheel drive, to 50/50 front/rear, depending on X-TRAIL's assessment of the road surface and the grip at each wheel. X-TRAIL: for instant power and control in any conditions.

DOWNHILL DRIVE SUPPORT

(DDS), another ALL MODE 4X4-i feature eliminates the difficulty (if not danger) of driving down steep descents by taking control of it for you.

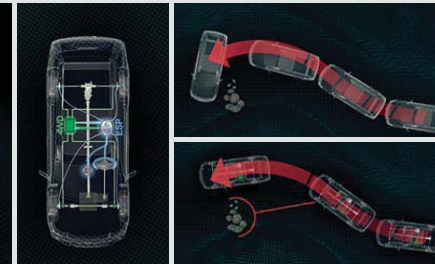


ALL MODE 4X4-i 4X MORE CONTROL

THE BENEFITS OF OFF-ROAD FUNCTIONALITY ON THE ROAD? SELF-COMMAND AND THE COURAGE OF YOUR CONVICTIONS.

UPHILL SUPPORT

ESP: MORE STABILITY



REMEMBER THE CHALLENGE

of hill starts when you first learned to drive? X-TRAIL makes sure you never have to think about coordinating hand brake, clutch and accelerator again. Part of ALL MODE 4X4-i, X-TRAIL is equipped with Uphill Start Support (USS) – a completely automatic system that ensures X-TRAIL takes off smoothly uphill on an incline of more than 10% – even on the steepest climbs – with no human intervention and no rolling back!

SLIPPERY CORNERS ARE NO

OBSTACLE with ESP (Electronic Stability Programme). A key part of the ALL MODE 4X4-i system, it ensures that your input at the steering wheel matches the state-of-play happening on the road.

BOOST your adrenalin with X-TRAIL's powerful engines. Choose from two diesel engines: a 2.0 litre dCi producing 150HP (automatic only) or the high output version with 173HP (manual only), both now with improved fuel economy and emissions. These diesels are equipped with DPF Particulate Filters to make sure they're especially environmental-friendly. X-TRAIL leads the way with superb handling, powerful acceleration and enough torque to pull you out of any tricky situation.

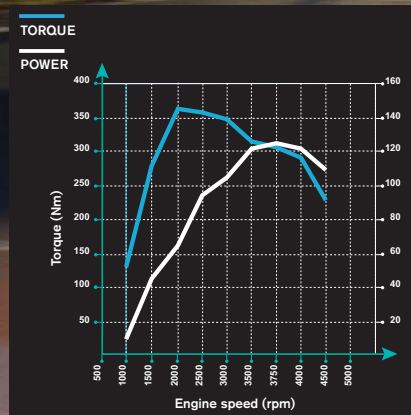
ALL THIS POWER IS EFFICIENTLY MANAGED by a 6-speed gearbox. A 6-speed manual is standard for on the 173HP diesel engine, or you can opt for the remarkable 6-speed automatic transmission with the 150HP diesel engine.



THE MOST THRILLING X-TRAIL ENGINE is the 173HP 2.0 dCi. Its advanced technology includes piezo-electric injectors and a variable nozzle turbocharger, which contribute to its exceptional torque and outstanding acceleration. The flexible torque delivery (90% available from only 1750rpm) and levels of refinement achieved by balancer shafts and a stiff aluminium engine block make X-TRAIL's drive even more responsive and rewarding.

STICK TO THE ROAD

EXPERIENCE X-TRAIL'S REMARKABLE GRIP: AN UNBEATABLE SENSATION.



THE ROCK-SOLID RIGIDITY OF X-TRAIL'S CHASSIS AND HIGH-PROTECTION BODY DELIVER SAFE, DYNAMIC HANDLING AND RESPONSIVENESS FOR YOUR DRIVING PLEASURE.



INDEPENDENT REAR MULTI-LINK SUSPENSION.

Fine-tuned to deliver consistent grip, high-speed stability and secure cornering on the road for a rewarding drive.

SHORT FRONT AND REAR OVERHANGS (955MM/1055MM).

Excellent approach and departure angles (28° front/24° rear) plus 210MM ground clearance put X-TRAIL in ideal shape for an active life –whether it's off-roading or tackling tough urban environment.

STOP WITH ASSURANCE.

Integrated with ESP and the ALL MODE 4X4-i system, four-wheel large-diameter ventilated disc brakes with the latest generation ABS and EBD (Electronic Brake force Distribution) reduce stopping distances and prevent wheels from locking in emergency braking situations and deliver optimum control on any road surface.

FEEL PROTECTED WHEREVER YOU GO

in X-TRAIL's super-strong passenger cabin. Six airbags, active head restraints on the front seats and pretensioners on front seatbelts are all standard.

RIGID
YET FLEXIBLE



EXPANSIVE AND ADAPTABLE

X-TRAIL'S INTERIOR SPACE STRETCHES FROM 603 TO 1773 LITRES. IT'S HUGE TRUNK CAN TAKE ON THE BIGGEST LOADS.

THE REAR SEATS FOLD DOWN COMPLETELY to create a flat floor more than 1700mm long – while still leaving the drawer and hidden under-floor compartment accessible. Very practical.



WITH THE REAR SEATS IN PLACE, there's ample room for five adults and all their baggage. The Super Luggage system, with its clever drawer and lifting top floor, gives you access to extra storage space too.

ADAPT TO EVERY SITUATION by folding down the rear seats to suit. Choose 40/20/40 or just fold down the centre armrest to accommodate longer items such as a snowboard. Fold down one seat and the armrest too and there'll still be plenty of room for a rear passenger. If you need even more length, you can always remove the rear seat cushions as well.

THE BACKSEAT POCKETS are big enough for lots of magazines, CDs and other indispensable travelling items.

KEEP YOUR SHADES safe and within reach, thanks to this useful sunglasses holder conveniently mounted in the roof.

THE HUGE GLOVEBOX which offers heating and cooling functions gives you more than 13 litres of storage.

THE STORAGE SPACE under the central front armrest can take 7 CDs and has a dedicated slot for an iPod.

THERE'S SPACE FOR TWO BOTTLES in the centre console for your rear passengers.

AT THE FRONT, THE TOP PANEL BOX can hold up to 7 CDs or a full-size tissue box.



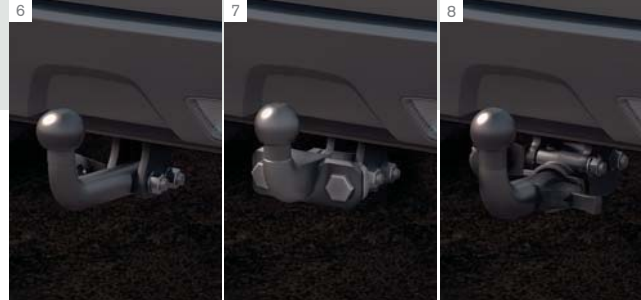
STORE IT ALL

THE MORE ACTIVE YOUR LIFE, THE MORE YOU SEEM TO TAKE WITH YOU. THAT'S WHY WE'VE EQUIPPED X-TRAIL'S LIVING SPACE WITH SO MANY HANDY STORAGE PLACES.

ACCESSORIES

MAKE IT PERSONAL

- 1) Illuminated front entry guards
- 2) Soft trunkliner, trunk net and bumper upper protection
- 3) 17" alloy wheel
- 4) 18" alloy wheel
- 5) 18" 'Saporo' alloy wheel
- 6-8) Tow bar fixed, flanged or removable
- 9) Rubber mats
- 10) Standard textile mats
- 11) Velour textile mats



- 12) Chrome side strips
- 13) Illuminated stainless steel side bars
- 14) Chrome foglamp rings
- 15) Stainless steel front styling bar



COLOURS

SELECT A SHADE



Chilli Pepper - **AX6 / S**



Storm White - **QAB / M**



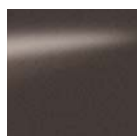
Himalayan Green - **JAE / M**



Twilight Grey - **K51 / M**



Universal Silver - **K23 / M**



Thundercloud - **K55 / M**



Haptic Blue - **RAQ / M with SS**



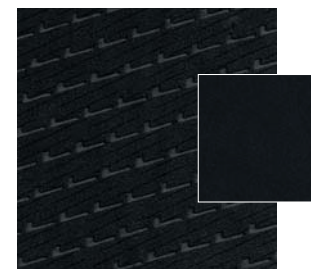
Ebisu Black - **G41 / M with SS**

Scratch Shield is a soft clear technology which cures visible surface scratches and swirl marks (car washes, bags, trees and bushes).

M: METALLIC S: SOLID SS: SCRATCH SHIELD

TRIMS

CHOOSE YOUR FABRIC

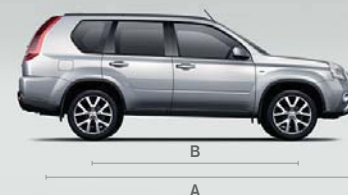


ACENTA
Black Fabric



TEKNA
Black Leather

DIMENSIONS



A: Overall length: 4,635MM
B: Wheelbase: 2,630MM
C: Overall height: 1,700MM
D: Overall width: 1,790MM



COMMITMENTS

YOU + NISSAN

YOU CARE ABOUT YOUR NISSAN SO NISSAN WILL CARE FOR YOU.
THAT'S WHY WE'LL MAKE THE FOLLOWING COMMITMENT:

YOU care about staying on the road when your Nissan is in for service or repair.

YOU care about quality enough to have your Nissan serviced at a Nissan dealership.

YOU care about getting the best value for money when it comes to service and repair.

YOU care about having your problems resolved quickly.

YOU care about getting the right Nissan model, engine & gear box to test drive.

NISSAN will keep you mobile free of charge.

NISSAN says thanks by giving you continuous RAC roadside assistance for free.

NISSAN will price match like for like competitor written quotes within 10 miles of your local dealer.

NISSAN will propose how to resolve any problem within 2 working days.

NISSAN will guarantee that's what you'll get when you pre-book your test drive either online or through our customer service centre.

YOU + NISSAN
CARE

For terms and conditions, please visit nissan.co.uk/care



AT NISSAN, YOU BRING OUT THE BEST IN US.

You spark our imagination. You provoke our ingenuity. You inspire us to change the rules and innovate. And at Nissan, innovation is not just about additions and extensions; it's about crossing the line to reinvent the status quo. It's about developing unexpected solutions to satisfy your wildest and most pragmatic desires. At Nissan, we design cars, accessories and services that break the mould - making the practical exciting and the exciting practical to offer you a more exhilarating driving experience everyday.



NISSAN X-TRAIL OFFERS YOU:

3-YEAR OR 60,000 MILE WARRANTY*

12-YEAR ANTI-CORROSION WARRANTY

12 MONTH OR 18,000 MILE SERVICE INTERVAL*

*Whichever comes first



Nissan. Innovation that excites.

visit our website at: www.nissan.co.uk/x-trail

Dealer stamp:

Every effort has been made to ensure that the content of this publication is correct at the time of going to press (June 2012). This brochure has been produced featuring prototype vehicles exhibited at motor shows. In accordance with the company's policy of continuously improving its products, Nissan International reserves the right to change at any time the specification and the vehicles described and shown in this publication. Nissan dealers will be informed of any such modifications as quickly as possible. Please check with your local Nissan dealer to receive the most up-to-date information. Because of the limitations of the printing processes used, the colours shown in this brochure may differ slightly from the actual colours of the paint and interior trim materials used. All rights reserved. Reproduction in whole or part of this brochure without the written permission of Nissan International is forbidden.

This brochure is made from chlorine free paper - X-TRAIL GEA - 06/2012 - Printed in EU. Part number 99999-54052
Created by NEW BBDO, France - Tel: +33 1 40 62 37 37 and produced by E-GRAFICSNFRANCE, France - Tel: +33 1 49 09 25 35.

[REQUEST A TEST DRIVE](#)





SHIFT_

NISSAN X-TRAIL



[Contents](#) | [Exterior design](#) | [Interior design](#) | [Technology & Performance](#) | [Style & Accessories](#) | [Technical Specifications](#) | [Price List](#) | [Commitments](#)

[Print](#) | [Close](#)

[REQUEST A TEST DRIVE](#)



X-TRAIL GRADES

Look far beyond ordinary 4x4s and you'll see a true adventure vehicle in a territory all of its own. The X-TRAIL is available in three grades and is more dynamic than ever with powerful and efficient diesel engines, including a six speed automatic, and a tremendous level of equipment. The X-TRAIL doesn't just push the boundaries – it easily takes you over them.



ACENTA

n-tec+

TEKNA

STANDARD FEATURES

TECHNOLOGY

- Drive computer
- Audio with Bluetooth compatibility
- Diesel Particulate Filter
- Cruise control
- Rain sensing wipers
- Auto headlamps

COMFORT AND CONVENIENCE

- Front and rear power windows with one touch and anti trap device (driver side only)
- Electrically adjustable door mirrors
- Heated door mirrors
- Tilt and reach adjust steering wheel
- Electric speed-sensitive power steering
- Remote audio control
- One touch / 3 x signal indicators
- Rear reading lamps
- Rear luggage area lamp
- 2 x 12 Volt power sockets
- Twin can and bottle coolers
- Twin rear cup coolers
- Ski hatch

HEATING, VENTILATION AND VISIBILITY

- Climate control air conditioning
- 2 speed wiper with variable intermittent
- Rear wiper with intermittent

SEATING, TRIM AND STORAGE

- Embossed cloth seat trim
- Drivers seat height and lumbar adjust
- Leather steering wheel, gearshift and handbrake
- Silver trim highlights
- Centre console armrest box
- Glovebox with heater / cooler function
- Door pockets
- Seat back pockets x 2
- Sunglasses holder
- Super Luggage system (double floor trunk with drawer)
- 40/20/40 split rear bench
- 8 utility hooks

SAFETY

- ALL MODE 4X4-i with ESP, USS and DDS
- ABS with Brake Assist and EBD
- Driver, passenger, side and curtain airbags
- Active front headrests with height adjustment
- Front seat belts with load limiter and pretensioner
- Front seat belt height adjustment
- Seat belt warning lamp (driver, passenger and rear)
- 3 rear headrests
- 3 x 3 point rear seatbelts with ELR
- Isofix childseat anchorage points (rear)
- Rear door child locks
- Halogen clear lens headlamps

SECURITY

- Remote central locking with superlocking
- Engine immobiliser
- Ultrasonic alarm system

EXTERIOR STYLING

- 17" Alloy wheels
- Body-coloured front and rear bumpers with black protective cladding
- Body-coloured door mirrors
- Chrome front grille
- Chrome door handles
- Roof rails
- Rear privacy glass

AUDIO

- MP3 Aux jack
- CD / Radio with 6 speakers

OPTIONS AT EXTRA COST

- Metallic paint
- Scratch-shield metallic paint (Ebisu Black and Haptic Blue)

FEATURES ADDITIONAL TO ACENTA

TECHNOLOGY

- Nissan Connect 5" touch-screen navigation system
- Around View Monitor 360° bird view parking assist
- Colour front, rear and passenger side cameras
- Intelligent key

INTERIOR STYLING

- Panoramic electric sunroof

EXTERIOR STYLING

- 18" Alloy wheels
- Side bars with steps
- Chrome fog lamp finishers

OPTIONS AT EXTRA COST

- Metallic paint
- Scratch-shield metallic paint (Ebisu Black and Haptic Blue)

FEATURES ADDITIONAL TO ACENTA

TECHNOLOGY

- Nissan Connect 5" touch-screen navigation system
- Around View Monitor 360° bird view parking assist
- Colour front, rear and passenger side cameras
- USB iPod connectivity
- Intelligent key

COMFORT AND CONVENIENCE

- Power front seats
- Electric folding mirrors
- Illuminated passenger vanity mirror

SEATING, TRIM AND STORAGE

- Leather upholstery
- Heated front seats
- Titanium trim highlights

INTERIOR STYLING

- Panoramic electric sunroof

SAFETY

- Xenon headlamps with washers

EXTERIOR STYLING

- 18" Alloy wheels
- Chrome fog lamp finishers

AUDIO

- Bose Audio System with 9 speakers

OPTIONS AT EXTRA COST

- Metallic paint
- Scratch-shield metallic paint (Ebisu Black and Haptic Blue)
- Extreme roof rails with integrated lamps

X-TRAIL

5-door, 5-seat SUV

Available engine		2.0 litre Turbo Diesel Engine	
Available transmissions		6-Speed automatic	6-Speed manual
Available grades		TEKNA	ACENTA, n-tec+, TEKNA
ENGINE			
Engine type		2.0 litre Turbo Diesel Engine	
Engine code		M9R 110 kW	M9R 127 kW
No. of cylinders, configuration		4, in line	
Valves per cylinder		4	
Air intake system		Turbo charged, intercooler	
Engine capacity	cm ³	1995	
Bore x stroke	mm	84 x 90	
Max. engine power ¹⁾	kW(ps)/min-1	110 (150)/4000	127 (173)/3750
Max. torque ¹⁾	Nm/min-1	320/2000	360/ 2000
Compression ratio		15.6 ± 1.1	15.6 ± 1.1
Fuel type		Diesel	
Fuel supply		Direct injection, common rail	
Emission control system		Oxidation catalyst with Diesel Particulate Filter	
DRIVE TRAIN			
Gear ratio 1st		4.199	3.727
2nd		2.405	1.950
3rd		1.583	1.193
5th		0.855	0.673
6th		0.685	0.596
Reverse		3.457	3.641
Transfer ratio		Transfer 1 - 0.617 Transfer 2 - 0.656	
Final drive ratio (Fr / Rr)		Fr 3.360 Rr 2.466	Fr 4.133 Rr 2.466
Type (option)		Active Brake LSD	
Driven wheels		4WD (Part time)	
CHASSIS			
Suspension front		Independent, Mac Pherson Strut	
rear		Independent Multi-link	
Steering		Electric Power assisted rack & pinion	
Braking system		Ventilated disc front & rear, power assisted, electronic	
		4 channel / 5 sensor ABS incl. EBD and Brake assist	
Wheel size		17x7J (ACENTA) / 18x7J (TEKNA)	
Tyre size		225/60R17 (ACENTA) / 225/55R18 (TEKNA)	

X-TRAIL

5-door, 5-seat SUV

Available engine		2.0 litre Turbo Diesel Engine	
Available transmissions		6-Speed automatic	6-Speed manual
Available grades		TEKNA	ACENTA, n-tec+, TEKNA
WEIGHTS & DIMENSIONS			
Kerb weight min./max. 2)	kg	1645/1690	1615/1660
Gross Vehicle Weight (PTW)	kg		2170
Max. payload 2)	kg	525	555
Max. axle weight rear	kg		1170
Max. trailer weight braked	kg	1350	2200
Max. trailer weight unbraked	kg		750
Max. vert. load on coupling point	kg	75	100
Max. roof load	kg	100	100
Overall length	mm		4635
Overall width	mm		1790
Overall height	mm		1700/1785 (with optional Extreme roof rails)
Wheelbase	mm		2630
Track front (offset)	mm		1540
Track rear (offset)	mm		1545
Luggage space - min. length / max. length	mm		1088 / 1742
- min. width / max. length	mm		1100 / 1570
- min. height / max. length	mm		1012 (884 excluding double deck trunk capacity)
Luggage capacity (VDA)	l		603 (479 excluding double deck trunk capacity)
max. with folded seats (VDA)	l		1773
Fuel tank capacity	l		65
PERFORMANCE			
Fuel consumption 3)			
Urban cycle	mpg (l/100 km)	31.0 (9.1)	36.2 (7.8)
Extra-urban	mpg (l/100 km)	47.9 (5.9)	51.4 (5.5)
Combined	mpg (l/100 km)	39.8 (7.1)	44.1 (6.4)
CO2 mass emission	g/km	188	168
Max. speed	mph (km/h)	114 (183)	124 (200)
Acceleration 0 - 62 mph (0 - 100 km/h)	sec	12.5	10.0
Min. turning circle (kerb to kerb)	m		11.6
Approach angle	degree		28
Departure angle	degree		24
Ramp angle	degree		21
Min. road clearance	mm		210
Gradability	%		30
Tilt angle	degree		49

1) In accordance with 1999/99/EC.

2) Figures in accordance with EC directive. Kerb weight condition is without driver and including coolant, oils, fuel, spare wheel and tools. Payload will be reduced depending on the options and/or accessories installed.

3) In accordance with 1999/100/EC. (Optional equipment, maintenance, driving technique, road and weather conditions may affect the official results.)



We see SHIFT_ as an invitation. To challenge whatever feels too familiar. To open your mind to the unfamiliar. To ask the questions no-one else is asking. And to find answers no-one else can. At Nissan, we do this every day. And it shapes everything we do. The result is a line-up of vehicles that represents a pure, uncompromising shift from the ordinary.

Visit our website at:
www.nissan.co.uk
www.nissan.co.uk/x-trail

Dealer stamp:



SHIFT_ the way you move

Every effort has been made to ensure that the content of this publication is correct at the time of going to press (September 2012). In accordance with the company's policy of continuously improving its products, Nissan Europe reserves the right to change at any time the specification and the vehicles described and shown in this publication. Nissan dealers will be informed of any such modifications as quickly as possible. Please check with your local Nissan dealer to receive the most up-to-date information. All rights reserved. Reproduction in whole or part of this brochure without the written permission of Nissan Europe is forbidden.

Part number: 99999-54065



X-TRAIL

Prices effective from 8th April 2013

Doorplan	Grade	Engine	Transmission	Basic Price	VAT	Total Retail Price	On The Road Price
5 door	ACENTA	2.0 dCi 173PS	6 manual	21,562.50	4,312.50	25,875	26,215
	n-tec+	2.0 dCi 173PS	6 manual	23,250.00	4,650.00	27,900	28,240
	TEKNA	2.0 dCi 173PS	6 manual	24,712.50	4,942.50	29,655	29,995
		2.0 dCi 150PS	6 auto	25,975.00	5,195.00	31,170	31,700

Basic and Total Retail includes delivery to the Dealership and number plates. On the Road Price includes 12 months Government Vehicle Excise Duty (determined by CO₂ emissions figure and fuel type - see back page for details) and £55 Government First Registration Fee.



X-TRAIL OPTIONS

	ACENTA	n-tec+	TEKNA	Basic	VAT	Total
Metallic or pearlescent paint	<input type="radio"/>	<input type="radio"/>	<input type="radio"/>	458.33	91.67	550
Scratch-shield metallic paint (Ebisu Black & Haptic Blue)	<input type="radio"/>	<input type="radio"/>	<input type="radio"/>	500.00	100.00	600
Extreme roof rails with integrated lamps			<input type="radio"/>	366.67	73.33	440
Delivery Pack (luxury velour textile mats, spare bulb and fuse kit, Nissan care pack#)	<input type="checkbox"/>	<input type="checkbox"/>	<input type="checkbox"/>	41.67	8.33	50
Protection Pack (body side mouldings, front door entry guards, tailgate entry guard, soft trunk liner)	<input type="checkbox"/>	<input type="checkbox"/>	<input type="checkbox"/>	308.33	61.67	370
Rear park sensors (adaptor required)	<input type="checkbox"/>	<input type="checkbox"/>	<input type="checkbox"/>	316.67	63.33	380
Front park sensors	<input type="checkbox"/>	<input type="checkbox"/>	<input type="checkbox"/>	304.17	60.83	365
Body side mouldings	<input type="checkbox"/>	<input type="checkbox"/>	<input type="checkbox"/>	100.83	20.17	121
Chrome body side strips	<input type="checkbox"/>	<input type="checkbox"/>	<input type="checkbox"/>	173.33	34.67	208
Chrome fog lamp rings	<input type="checkbox"/>	<input checked="" type="checkbox"/>	<input checked="" type="checkbox"/>	125.83	25.17	151
Stainless steel side bars with steps	<input type="checkbox"/>	<input checked="" type="checkbox"/>	<input type="checkbox"/>	549.17	109.83	659
Roof spoiler (prices from)*	<input type="checkbox"/>	<input type="checkbox"/>	<input type="checkbox"/>	275.00	55.00	330
Tyre step	<input type="checkbox"/>	<input type="checkbox"/>	<input type="checkbox"/>	45.83	9.17	55
Roof bars, steel^	<input type="checkbox"/>	<input type="checkbox"/>	<input type="checkbox"/>	119.17	23.83	143
Bicycle carrier (Pro Ride 591)	<input type="checkbox"/>	<input type="checkbox"/>	<input type="checkbox"/>	75.00	15.00	90
Roof Box (prices from)	<input type="checkbox"/>	<input type="checkbox"/>	<input type="checkbox"/>	141.67	28.33	170
Towbar and electrics (prices from)**	<input type="checkbox"/>	<input type="checkbox"/>	<input type="checkbox"/>	328.33	65.67	394

*Painting of roof spoiler required at additional cost

** Price quoted for flanged towbar with single electrics and flasher failure mode

^ Not compatible with Extreme Roof Rail option

Nissan care pack includes: Nissan branded toggle bag, large car wash sponge, wash 'N' wax sachet, screen bug shifter sponge, chamoix de-mister pad, screenwash sachet, pocket torch (including batteries)
Dealer fit option prices include fitting but are only a guide. Please check with your local Nissan dealer for exact prices.

Optional - Standard - Optional Dealer Fit -

CO2 MASS EMISSIONS

Vehicle	Engine	Transmission	Body Style	CO ₂ Mass Emissions g/km	12 months Vehicle Excise Duty*
X-TRAIL	2.0 dCi 173PS	6 manual	5 door	168	£285
	2.0 dCi 150PS	6 auto	5 door	188	£475

* Determined by CO₂ emissions figure and fuel type- see "Further information".
NB. Navara VED is fixed at £220 as it is considered a commercial vehicle.

NISSAN INSURANCE

Nissan Insurance has been designed to help Nissan drivers get the most from their cover, boasting the following benefits:

- Competitive premiums
- All repairs carried out within the Nissan Approved Repairer Network
- Only genuine Nissan replacement parts used
- The opportunity to use a courtesy car for the duration of any repairs, when you use an approved repairer (subject to availability)
- Convenient instalment plans, subject to status
- EU cover included
- 24-hour UK based claims helpline

Call Nissan Insurance today on **0845 603 4394**

Nissan Insurance is arranged and administered by Equity Insurance Brokers Limited, which is authorised and regulated by the Financial Services Authority. Registered Office: Library House, New Road, Brentwood, Essex CM14 4GD. Registered in England No. 258414. Nissan Motor (GB) Limited is authorised and regulated by the Financial Services Authority. All quotes are based on individual circumstances and are subject to insurer's underwriting criteria. Terms and conditions apply.

FURTHER INFORMATION

On The Road Prices. On The Road Price includes 12 months Government Vehicle Excise Duty (VED) determined by CO₂ emissions figure and fuel type, £55 Government First Registration Fee, number plates and delivery to the Nissan Dealership.

VED rates are determined by the vehicles CO₂ emissions figures and by the type of fuel used. The following table applies to all new car registrations:

VED Band	A	B	C	D	E	F	G	H	I	J	K	L	M
CO ₂ Emissions Figure (g/km)*	up to 100g	101-110g	111-120g	121-130g	131-140g	141-150g	151-165g	166-175g	176-185g	186-200g	201-225g	226-255g	over 255g
Petrol Car	£0	£0	£0	£0	£125	£140	£175	£285	£335	£475	£620	£840	£1,065
Diesel Car	£0	£0	£0	£0	£125	£140	£175	£285	£335	£475	£620	£840	£1,065
Alternative Fuel Car	£0	£0	£0	£0	£115	£130	£165	£275	£325	£465	£610	£830	£1,055

* g/km = grammes of CO₂ per kilometre travelled.

All Light Commercial Vehicles will have a standard VED rate of £220 per annum.

Optional equipment. This price list features a selection from the full range of optional equipment, be they standard, dealer fit or factory options.

For further information and details of the full range, please contact your local Authorised Nissan Dealer.

Nissan's commitment to you includes all of the following benefits – some of which may be the reasons why you chose your new Nissan in the first place:

Three-year/60,000 miles manufacturer's warranty – Nissan's comprehensive warranty provides cover for your new Nissan from defects in materials or workmanship. Your vehicle is covered in all European Countries where Authorised Nissan Dealers are located. If your vehicle becomes inoperative due to a warrantable defect a towing service, when necessary, to the Authorised Nissan Dealer is covered. If a warrantable defect abroad takes more than six hours to repair, the Touring Assistance Programme will pay for a hotel room or rental car up to a certain maximum. The paint warranty covers painted body parts (excluding the underbody) for three years regardless of mileage driven. For further details please contact your local Authorised Nissan Dealer.

NV200 Combi - New Vehicle Warranty is issued by Nissan International SA is valid for 3 years from the warranty start date or 60,000 miles, whichever comes first. In addition, for each new NV200 Combi sold by an authorised UK Nissan dealer, Nissan Motor (GB) Limited (NMGB) will issue an extension to the New Vehicle Warranty. This warranty extension will cover your vehicle from 60,000 miles up to 100,000 miles or 3 years from the warranty start date, whichever comes first. Please note that audio and navigation units will not be covered by the warranty extension.

FURTHER INFORMATION

Nissan European Roadside Assistance is provided for the 1st 3 years of your vehicle's life.

Roadside, Recovery and At Home products are provided by RAC Motoring Services (Registered No. 1424399, Registered Office: 8 Surrey Street, Norwich, NR1 3NG). RAC Motoring Services (in respect of insurance mediation activities only) is authorised and regulated by the Financial Services Authority and within the jurisdiction of the Financial Ombudsman Service and Financial Services Compensation Scheme.

Onward Travel and European Cover are underwritten by RAC Insurance Limited (Registered No. 1424399, Registered Office: 8 Surrey Street, Norwich, NR1 3NG). RAC Insurance Limited is authorised and regulated by the Financial Services Authority and within the jurisdiction of the Financial Ombudsman Service and Financial Services Compensation Scheme.

Peace of mind – we always guarantee our workmanship, and all genuine Nissan replacement parts and accessories have a minimum of one year's warranty. Accessory prices are subject to change, please see your nearest dealership for the most up to date prices

Our technicians have been trained by Nissan to work on your vehicle and they are the Nissan specialists. They use the latest equipment to ensure your vehicle is given the best treatment. Accessory prices are subject to change, please see your nearest dealership for the most up to date prices.

Recyclability – we take all our environmental responsibilities very seriously - innovation today comes with a deep respect for the environment. Our engines are now much more unobtrusive and their emissions have been considerably reduced. All our vehicles are designed with recycling in mind.

Nissan Finance offers a wide range of flexible finance schemes to meet the needs of both our retail and business customers. Preferences, Hire Purchase, Nissan Contract Hire and Finance Lease, all offer the in-built flexibility to make the package tailor-made to meet your individual needs. We also provide added security to your finance agreement with a comprehensive range of payment protection plans. Ask your local Authorised Nissan Dealer for details.

The Nissan Motability Programme developed in association with the registered charity Motability enables those with difficulty getting around to obtain selected models on preferential terms.

All prices in this list are quoted in pounds sterling. Value Added Tax (VAT) has been calculated at 20%.

While all reasonable effort has been made to ensure the accuracy of the information provided, due to Nissan's policy of continuous product improvement, all particulars contained are subject to constant revision and Nissan reserves the right to change, alter or modify, among other things, specifications, colours and prices of models without notice at any time. Accordingly you should consult your local Authorised Nissan Dealer for the exact introduction dates of all models and for the most up-to-date information.

Images shown are for guidance purposes. In some instances photos are of non UK specification vehicles and do not represent a specific model, grade or offer.



YOU + NISSAN

CARE

You care about the car you drive. So do we. That's why we're making a commitment to providing the best customer service in the market.

Find out more nissan.co.uk/care



REQUEST A TEST DRIVE



Nissan cares for you because you care about your Nissan.
That's why we'll make the following commitment:

YOU care about staying on the road when your Nissan is in for service or repair.

YOU care about quality enough to have your Nissan serviced at a Nissan dealership.

YOU care about getting the best value for money when it comes to service and repair.

YOU care about having your problems resolved quickly.

YOU care about getting the right Nissan model, engine & gearbox to test drive.

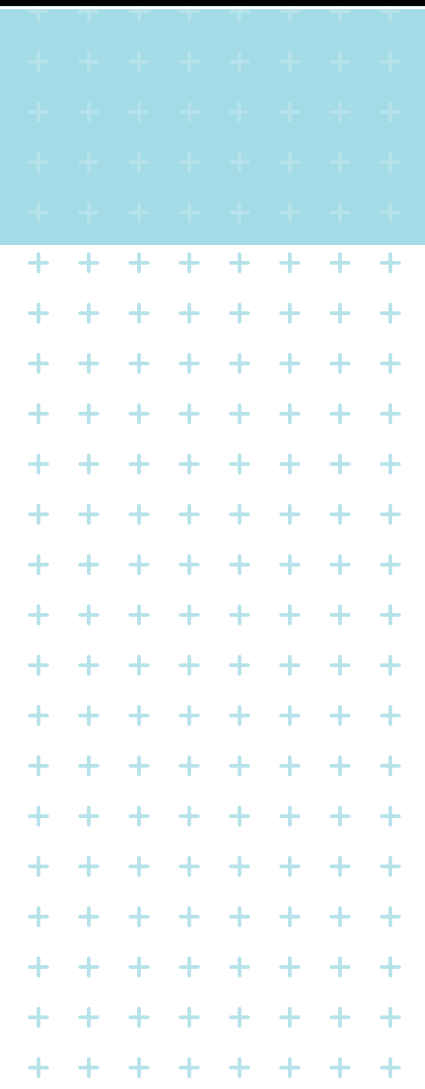
NISSAN will keep you mobile free of charge.

NISSAN says thanks by giving you continuous Nissan roadside assistance for free.

NISSAN will price match like for like competitor written quotes within 10 miles of your local dealer.

NISSAN will propose how to resolve any problem within 2 working days.

NISSAN will guarantee that's what you'll get when you pre-book your test drive either online or through our customer service centre.



Find out more nissan.co.uk/care





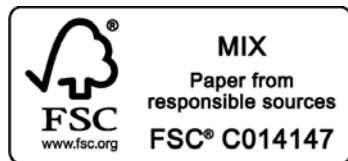
Nissan. Innovation that excites

NISSAN MOTOR (GB) LIMITED

The Rivers Office Park
Denham Way
Maple Cross
Rickmansworth
Hertfordshire
WD3 9YS

Visit our website at: www.nissan.co.uk

Dealer stamp:



Part Number: 99999-54092

Prices effective from 8th April 2013 unless otherwise stated.