

# CRUZE





**FIND NEW ROADS\***



**WHY JUST GO  
FROM A TO B**

## **WHEN IMAGINATION CAN TAKE YOU EVERYWHERE.**

The road. A simple path, really. And yet it's come to mean so much more. Perhaps the real reason roads are special is that each one leads us to some place we're not — but could be. At Chevrolet, roads are our springboards. They challenge us, taunt us and guide us to create better, more exciting, more ingenious ways to move through life. Roads drive us to places we've never been before. And we'll never stop seeking out new ones.





**AND WHAT BETTER WAY TO FIND NEW ROADS THAN IN A CHEVROLET CRUZE?**

Choose the body style that best fits your needs:

- If you're looking for a vehicle that's spectacularly designed, spacious and dynamically engineered, then the sporty 5-door hatchback Cruze is made for you.
- The Cruze Station Wagon is perfect for families with

active lifestyles. It offers space and safety your family can rely on.

- The Cruze Saloon is elegant and comfortable with superb driving characteristics, and designed to get you around in style.



**DESIGN THAT DRIVES BEAUTIFULLY.** The Chevrolet Cruze is just as efficient for an everyday drive as it is for attracting admiring glances. The exterior has a confident posture emphasised by a dynamic angular fascia, a powerful concave shoulder line, and a bold front grille that frames our iconic bowtie logo. The swept-back lamps lead the eye across sculpted fenders to accentuate the car's clean athletic look.

And the LTZ trim now comes with integrated turn signals in the side mirrors that improve Cruze's overall striking appearance.







**COME INSIDE AND FEEL AT HOME.** Cruze packs comfort, space, utility, and efficiency into a stylish compact frame. The dual-cockpit design provides a sporty up-scale appearance, also provided by the chrome surround finish around the buttons and interfaces and the three-ringed instrument

cluster, in the LTZ trim. The integrated centre stack flows seamlessly from the dashboard to the centre console and houses the infotainment display, radio and air conditioning controls. The interior seats with their high-end upholstery are tailored to be extremely comfortable.

Overall roominess is very generous in the Cruze, with plenty of head and legroom, and smart storage options. Plus Cruze's 60/40 folding rear seats mean the cargo area can be configured to best suit your cargo-carrying needs.





**GET SURPRISED UNDER THE BONNET.** Get ready for impressive performance that takes you further for less. Cruze offers a wide range of engines from 1.4L petrol to 2.0L diesel. The 1.4L turbo-charged petrol engine, now available with 6-speed automatic transmission, delivers a performance comparable to engines of a larger displacement, while requiring less fuel and producing a smaller carbon footprint. The

1.7L diesel engine is now also available with 110hp, making Cruze even more efficient, requiring just 76.2mpg. It's equipped with Chevrolet Stop/Start technology which improves fuel economy and reduces CO<sub>2</sub> emissions to 99g/km Saloon. So get ready to power your adventure forward.





\* IMPORTANT NOTE: Purchasing cost for Apps and/or internet traffic data/roaming cost may occur. For further information visit Apps web page and/or the web page of the relevant mobile operator.

\*\* Depending on the model of your mobile phone.

**GET CONNECTED.** The Cruze LTZ trim now comes equipped with Chevrolet MyLink – a connected radio system that features a 7inch colour touch-screen and that enables you to:

- Listen to the music stored on your compatible smartphone and online content via Stitcher internet radio\*
- Select music tracks from a USB connected device or

the embedded CD player

- View pictures stored on a connected device when you're parked\*\*
- Park easily, identifying rear obstacles captured from the rear camera and projected on the monitor.

Chevrolet MyLink also features Voice Recognition, allowing you to speak short commands to take and

make hands-free phone calls, send messages, control key features of the infotainment system and insert your desired destination in the embedded navigation system.



**DRIVEN BY OUTSTANDING SAFETY.** Cruze can be equipped with the most state-of-the-art safety features. Like the Side Blind Zone Alert\* that helps you detect a vehicle when it's in the blind spot of the side mirror, increasing your 'eye-sight' and helping you drive more safely. On top it has 6 airbags and the Stabilitrak® Electronic Stability Control System, as well as the proven McPherson suspension design,

that contribute to the vehicle's overall balanced ride and responsive handling. For extra child security, ISOFIX® is available for both outer rear seats. So you can all sit back, relax and enjoy every trip.

\*Side Blind Zone Alert is a factory order option on LTZ trim only.







CRUZE

CHEVROLET

CRUZE





01



04



05



02



03

**FITS YOUR NEEDS.** The Chevrolet Cruze was built for those who are looking for style, functionality, spaciousness and performance. To complement this, and so you can get even more out of your Cruze, we've developed a wide range of accessories including bike carriers, ski racks, roof boxes and much more.

01 Thule® bike carrier rear\*

02 Thule® roof box\*\*

03 Cargo organizer

04 Tow bar

05 Alloy wheel 17" (for petrol engines)

\* for use with tow bar

\*\* for use with roof base carrier

A full range of accessories can be found at [Chevrolet.co.uk](http://Chevrolet.co.uk)



## TECHNICAL SPECIFICATION

VARIANT	1.4 MT5	1.4 Turbo MT6	1.4 Turbo AT6	1.6 MT5	1.8 AT6
<b>ENGINE AND TRANSMISSION</b>					
Transmission, type	Manual	Manual	Automatic	Manual	Automatic
Fuel type	Petrol	Petrol	Petrol	Petrol	Petrol
Fuel system	Multi-Point Injection	Multi-Point Injection	Multi-Point Injection	Multi-Point Injection	Multi-Point Injection
Displacement (cc)	1398	1362	1362	1598	1796
Cylinders configuration	in line	in line	in line	in line; 5 main bearings	in line; 5 main bearings
Valve train	DOHC 16 valve	DOHC 16 valve	DOHC 16 valve	DOHC 16 valve	DOHC 16 valve
Bore (mm)	73.4	72.5	72.5	79.0	80.5
Stroke (mm)	82.6	82.6	82.6	81.5	88.2
Clutch	dry, single disc	dry, single disc	-	dry, single disc	-
Power output (kW/hp @ rpm)	74/100 @ 6000	103/140 @ 4900-6000	103/140 @ 4900-6000	86/117 @ 6200	104/141 @ 6200
Max. torque (Nm @ rpm)	130 @ 4200	200 @ 1850-4900	200 @ 1850-4900	157 @ 4200	176 @ 3800
Compression ratio	10.5 : 1	9.5 : 1	9.5 : 1	11.0 : 1	10.5 : 1
<b>PERFORMANCE AND FUEL CONSUMPTION(1)</b>					
Top speed (mph)	110	124	125	118	119
Acceleration 0-100km/h (sec)	14.6	9.5	10.8	13.4	11.9
Urban mpg (l/100 km)	39.7 (7.1)	37.6 (7.5)	32.8 (8.6)	31.3 (9.0)	27.1 (10.4)
Extra urban mpg (l/100 km)	57.6 (4.9)	58.8 (4.8)	55.3 (5.1)	55.3 (5.1)	50.4 (5.6)
Combined mpg (l/100 km)	49.5 (5.7)	48.7 (5.8)	44.1 (6.4)	42.8 (6.6)	39.2 (7.2)
CO <sub>2</sub> Emissions (g/km)	134	136	149	151	170
Emission class	Euro5	Euro5	Euro5	Euro5	Euro5
<b>CHASSIS AND BRAKES</b>					
Steering	Electric power steering	Electric power steering	Electric power steering	Electric power steering	Hydraulic power steering
Drive axle	front wheel drive	front wheel drive	front wheel drive	front wheel drive	front wheel drive
Brakes front, diameter (mm)	15" Vent Disk, 276 mm	15" Vent Disk, 276 mm	15" Vent Disk, 276 mm	15" Vent Disk, 276 mm	15" Vent Disk, 276 mm
Brakes rear, diameter (mm)	15" Solid Disk, 268 mm	15" Solid Disk, 268 mm	15" Solid Disk, 268 mm	15" Solid Disk, 268 mm	15" Solid Disk, 268 mm
Wheel suspension front	McPherson Strut	McPherson Strut	McPherson Strut	McPherson Strut	McPherson Strut
Wheel suspension rear	Compound Crank Axle	Compound Crank Axle	Compound Crank Axle	Compound Crank Axle	Compound Crank Axle

(1) Official Government Environmental Data. Please note that the figures quoted for fuel consumption and CO<sub>2</sub> emissions have been obtained under simulated test conditions in accordance with the relevant EU Directive, to give prospective purchasers data for the purpose of comparing different models. They do not constitute a warranty as to the figures obtainable by drivers in real life, which will depend upon driving load, tyre pressures, road conditions and traffic.



## WEIGHTS AND DIMENSIONS

VARIANT	1.4 MT5	1.4 Turbo MT6	1.4 Turbo AT6	1.6 MT5	1.8 AT6
<b>WEIGHTS</b>					
Kerb weight (kg)	1340	1405	1415	1360	1400
Max. allowable weight (kg)	1875	1940	1950	1895	1935
Max. axle load front/rear (kg)	1060/1000	1060/1000	1060/1000	1060/1000	1060/1000
Trailer with brake (kg)	800	1200	1200	1200	1200
Trailer without brake (kg)	695	695	695	695	695
<b>EXTERIOR DIMENSIONS</b>					
Length (mm)	4681	4681	4675	4681	4681
Width (mm)	1797	1797	1797	1797	1797
Height (mm)	1484 (1521, roof rack)	1484 (1521, roof rack)	1484 (1521, roof rack)	1484 (1521, roof rack)	1484 (1521, roof rack)
Wheelbase (mm)	2685	2685	2685	2685	2685
Track front/rear	1544/1558	1544/1558	1544/1558	1544/1558	1544/1558
<b>INTERIOR DIMENSIONS</b>					
Head Room front (mm)	998	998	998	998	998
Head Room rear (mm)	988	988	988	988	988
Leg Room front (mm)	1074	1074	1074	1074	1074
Leg Room rear (mm)	917	917	917	917	917
Shoulder Room front (mm)	1391	1391	1391	1391	1391
Shoulder Room rear (mm)	1370	1370	1370	1370	1370
Luggage capacity (Seat-up/Folded) (l)	500/1478	500/1478	500	500/1478	500/1478
Fuel tank capacity (l)	60	60	60	60	60
Number of seats	5	5	5	5	5



VARIANT	1.7 110 HP MT6	1.7 130 HP MT6	2.0 AT6
<b>ENGINE AND TRANSMISSION</b>			
Transmission, type	Manual	Manual	Automatic
Fuel type	Diesel	Diesel	Diesel
Fuel system	common rail injection	common rail injection	common rail injection
Displacement (cc)	1686	1686	1998
Cylinders configuration	in line; 5 main bearings	in line; 5 main bearings	in line 4
Valve train	DOHC 16 valve	DOHC 16 valve	DOHC 16 valve
Bore (mm)	79.0	79.0	86.0
Stroke (mm)	86.0	86.0	86.0
Clutch	dry, single disc	dry, single disc	-
Power output (kW/hp @r pm)	81/110 @ 4000	96/130 @ 4000	120/163 @ 3800
Max. torque (Nm @ rpm)	280 @ (1750-2500)	300 @ (2000-2500)	360 @ 1750-2750
Compression ratio	16.5 : 1	16.5 : 1	16.3 : 1
<b>PERFORMANCE AND FUEL CONSUMPTION(1)</b>			
Top speed (mph)	114	124	123
Acceleration 0 - 62 mph	12.4	10.4	10.0
Urban mpg (l/100 km)	58.8 (4.8)	52.3 (5.4)	34.0 (8.3)
Extra urban mpg (l/100 km)	83.0 (3.4)	70.6 (4.0)	56.5 (5.0)
Combined mpg (l/100 km)	72.4 (3.9)	62.7 (4.5)	45.5 (6.2)
CO <sub>2</sub> Emissions (g/km)	104	119	164
Emission class	Euro5	Euro5	Euro5
<b>CHASSIS AND BRAKES</b>			
Steering	Electric power steering	Electric power steering	Hydraulic power steering
Drive axle	front wheel drive	front wheel drive	front wheel drive
Brakes front, diameter (mm)	16" Vent Disk, 300 mm	16" Vent Disk, 300 mm	16" Vent Disk, 300 mm
Brakes rear, diameter (mm)	16" Solid Disk, 292 mm	16" Solid Disk, 292 mm	16" Solid Disk, 292 mm
Wheel suspension front	McPherson Strut	McPherson Strut	McPherson Strut
Wheel suspension rear	Compound Crank Axle	Compound Crank Axle	Compound Crank Axle



## WEIGHTS AND DIMENSIONS

VARIANT	1.7 110 HP MT6	1.7 130 HP MT6	2.0 AT6
<b>WEIGHTS</b>			
Kerb weight (kg)	1475	1475	1539
Max. allowable weight (kg)	2010	2010	2074
Max. axle load front/rear (kg)	1160/1000	1160/1000	1160/1000
Trailer with brake (kg)	1200	1200	1200
Trailer without brake (kg)	750	750	750
<b>EXTERIOR DIMENSIONS</b>			
Length (mm)	4681	4681	4681
Width (mm)	1797	1797	1797
Height (mm)	1484 (1521, roof rack)	1484 (1521, roof rack)	1484 (1521, roof rack)
Wheelbase (mm)	2685	2685	2685
Track front/rear	1544/1558	1544/1558	1544/1558
<b>INTERIOR DIMENSIONS</b>			
Head Room front (mm)	998	998	998
Head Room rear (mm)	988	988	988
Leg Room front (mm)	1074	1074	1074
Leg Room rear (mm)	917	917	917
Shoulder Room front (mm)	1391	1391	1391
Shoulder Room rear (mm)	1370	1370	1370
Luggage capacity (Seat-up/Folded) (l)	500/1478	500/1478	500/1478
Fuel tank capacity (l)	60	60	60
Number of seats	5	5	5



┌ 1544 mm ┐  
└ 1797 mm ┘



┌ 2685 mm ┐  
└ 4681 mm ┘



┌ 1558 mm ┐

└ 1521 mm ┘



## COLORS



SUMMIT WHITE



CARBON FLASH BLACK METALLIC



VELVET RED METALLIC



ICE SILVER METALLIC



DEEP ESPRESSO BROWN METALLIC



BLUE SAPPHIRE METALLIC



SATIN STEEL GREY METALLIC



MYSTIC MOONLIGHT BLUE METALLIC

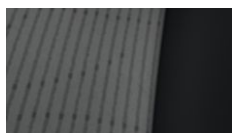


MARS STONE METALLIC



SMOKEY GREY METALLIC

## INTERIOR TRIMS



JET BLACK MEDIUM TITANIUM CLOTH



JET BLACK JET BLACK CLOTH



JET BLACK JET BLACK CLOTH LEATHERETTE

## WHEELS



16" STEEL



16" ALLOY



17" ALLOY



17" ALLOY



17" ALLOY



17" ALLOY

Fuel type	All	All	Petrol	Diesel	Petrol	Diesel
Wheel size	6.5JX16	6.5JX16	7JX17	7JX17	7JX17	7JX17
Tire size	205/60R16	205/60R16	215/50R17	225/50R17	215/50R17	225/50R17
Tyre Fuel Efficiency Rating (1)	E	E	F (E)*	E	F (E)*	E
Tyre Wet Grip Rating (1)	B	B	B (A)*	C (B)*	B (A)*	C (B)*
Tyre Noise Rating (1)	72dB	70db	72db	73dB (72dB)*	72db	73dB (72dB)*
Tyre Noise Class (1)						

(1) Tyre rating according Regulation (EC) 1222/2009

\* Within brackets data referring to Station Wagon

---

## **CHEVROLET OWNER PRIVILEGES**

Every Chevrolet comes with a comprehensive warranty and commitment from us to you:

- 3 years or 60,000 miles comprehensive warranty FREE
- Optional Fixed Price Servicing plans available at extra cost
- 6 year anti-perforation corrosion warranty with no mileage restrictions FREE

---

## **EXTENDED VEHICLE WARRANTY**

EXTENDED WARRANTY: For complete peace of mind Chevrolet offers an extended warranty that can be purchased on an annual basis following the expiry of the original new car warranty. It covers most mechanical and electrical components. Terms and conditions apply. For further details please contact your local Chevrolet Dealer.

---

Front cover image: Chevrolet Cruze LTZ model varies from UK specification.

The information contained in this brochure was accurate at the time of going to press. Chevrolet UK is constantly seeking ways to improve the specification, design and production of its vehicles and accessories, and alterations take place continually. Whilst every effort is made to produce up-to-date literature, this market brochure should not be regarded as an infallible guide to current specifications, nor does it constitute an offer for sale of any particular vehicle and accessories. Illustrated optional equipment is available at extra charge. Availability, technical features and equipment provided on our vehicles can vary from one market to another and may change without prior notice. Owing to the print limitations of reproducing paint colours on paper, the colours shown here can only be taken as a general guide to the range of colours available. Information on recycling design, recycling End of Life Vehicles (ELV) and the return locations of ELVs can be found on the website [Chevrolet.co.uk](http://Chevrolet.co.uk)

© 2013 Chevrolet UK Ltd. All rights reserved. This material shall not be reprinted, in whole or in part, without the express written permission of Chevrolet UK.

[Chevrolet.co.uk](http://Chevrolet.co.uk)



SPARK



AVEO



TRAX



ORLANDO



CAPTIVA



CAMARO



CORVETTE



VOLT