

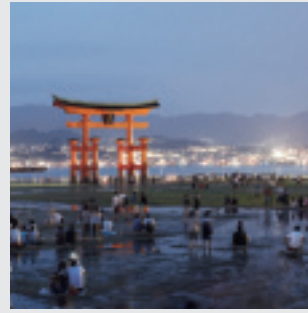
*MAZDA MX-5*



zoom-zoom  
zoom-zoom  
zoom-zoom  
zoom-zoom



"THE HIROSHIMA SPIRIT IS TO NEVER GIVE UP, TO PURSUE EXCELLENCE. TO MAINTAIN A "CAN DO" ATTITUDE."



"WITH A COMPACT, LIGHT ENGINE, A LIGHT BODY AND A BEAUTIFUL DESIGN. WE AIM TO CREATE A NEW STANDARD OF CARS."



## A CLASS OF ONE

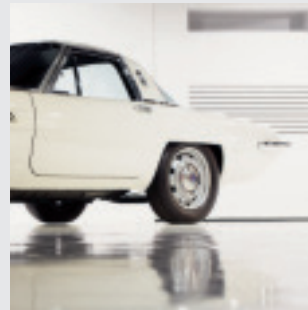
There is only one car like the multi-award-winning Mazda MX-5. Only one car that combines the true roadster elements – an impressively high power-to-weight ratio, outstanding dynamic agility, rear-wheel drive and perfect 50:50 weight distribution – with Mazda's unique approach to car design. The original Mazda MX-5 was a pure roadster, inspired, as with the latest model, by the philosophy of Jinba Ittai: 'rider and horse as one'.

Now, three model generations after first being unveiled, the Mazda MX-5 is the world's bestselling two-seater sports car. Advances in technology may have transformed the genetics of the driving experience – but we're proud that the intimate bond between car and driver that put the original into a class of its own has remained the same ever since.

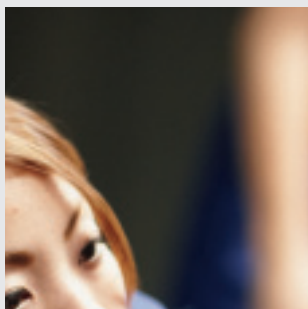
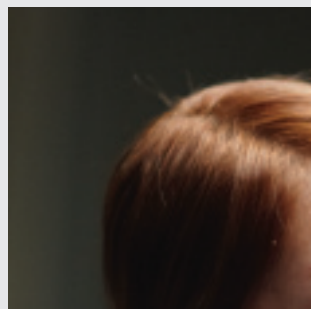


"MAZDA WILL CONTINUE TO CHALLENGE, IN ALL OUR PURSUITS. WE'LL ALWAYS DO THINGS DIFFERENTLY."

**MASAHIRO MORO**  
EXECUTIVE OFFICER

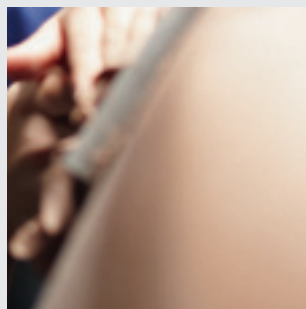
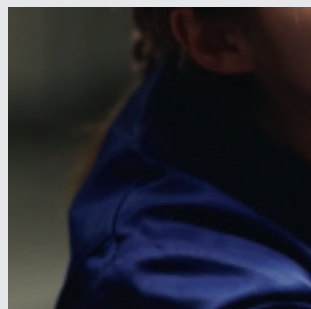


**FOLLOW THE STORY AT [Mazda.co.uk](http://Mazda.co.uk)**



"DESPITE ADVANCEMENT IN TECHNOLOGY, YOU CAN ONLY GO SO FAR WITH COMPUTERS OR OTHER SCIENTIFIC MEANS. ULTIMATELY, IT DEPENDS ON THE CARMAKER'S SKILL AND SENSITIVITY."

**HIROTAKA KANAZAWA**  
MANAGING EXECUTIVE OFFICER



*Handwritten signature*



## *PURE ROADSTER*

A fusion of art and science where everything works in harmony to deliver the ultimate adrenalin rush. A car that makes you feel connected. Alive. In touch. With responsive handling, rapid acceleration, individual comfort and eye-catching style, the Mazda MX-5 is engineered for people in search of the driving fun that only a pure roadster can provide.





## *PURE PASSION*

You make the connection the instant your eyes fix on the Mazda MX-5. It's as if you were there when the designers first put pen to paper. As if you were inside their head. You can sense their enthusiasm. Feel their passion. You're every bit as excited at the prospect of driving this car as they were when tasked with designing it. Call it synchronised heartbeats; a shared pleasure in advanced driving dynamics and sensuous curves.







## *PURE ADRENALIN*

There's not another soul about. Just you, your car and the road. The wind is in your hair. The scenery flashes by. Suddenly you're into your favourite series of tight bends and the car is alive in your hands. The connection is instantaneous. It's as if your Mazda MX-5 can read your mind; the responsive engine, stiff chassis, precise steering and slick gear change encouraging you to slice through every twist and turn with millimetre precision.







## *PURE ZOOM-ZOOM*

The Mazda MX-5 is a pure expression of Zoom-Zoom. But purity does nothing to inhibit choice. To begin with, you must decide between the traditional Soft-top or the streamlined Mazda MX-5 Roadster Coupe, featuring one of the world's fastest power-operated hardtops, opening or closing in just 12 seconds. And then, the choice of model. Spirited 1.8i or 2.0i? The powerful and assured 2.0i Sport Tech with Bilstein suspension delivering even more agile performance? Or how about the 2.0i PowerShift with paddle-shift operated transmission and creature comforts such as a Bose® premium audio system and Bluetooth® connectivity? All in all, a tough choice, but one that you can be sure will always deliver an outstanding driving experience whatever your decision.









# RANGE

## THE MAZDA MX-5 LINE-UP

Available either with premium cloth Soft-top or as Mazda MX-5 Roadster Coupe with power-retractable hardtop.

### 1.8i SE

#### Key features:

- 1.8-litre 126ps engine
- 5-speed manual transmission
- Climate control air-conditioning
- Dynamic Stability Control (DSC) with Traction Control System (TCS)
- 16" Alloy wheels
- Electric windows with one-touch down (driver and front passenger)
- Single CD audio unit with AM/FM radio, six speakers, MP3 / WMA-compatibility and auxiliary (AUX) input jack
- Dual front and side airbags

### 2.0i SPORT TECH\*

#### In addition to 1.8i SE:

- 2.0-litre 160ps engine
- Sport suspension featuring Bilstein dampers and strut tower bar
- 6-speed manual transmission
- 17" Alloy wheels
- Front fog lights
- Leather trim with 5-stage heated seats
- Integrated Bluetooth®
- Premium Bose® audio system with 6-CD changer, AM/FM radio, seven speakers, MP3 / WMA-compatibility and auxiliary (AUX) input jack\*\*
- Alloy pedal set
- Limited Slip Differential (LSD)

### 2.0i SPORT TECH NAV\*

#### In addition to 2.0i Sport Tech:

- TomTom satellite navigation system including:
  - 5.8" touch screen
  - Map of 45 European countries
  - Advanced lane guidance
  - TomTom IQ routes
  - TomTom LIVE Services†
  - Voice control
  - USB connectivity
- Single CD audio unit with AM/FM radio, six speakers, MP3 / WMA-compatibility and auxiliary (AUX) input jack

### 2.0i POWERSHIFT\*

#### In addition to 1.8i SE:

- 2.0-litre 160ps engine
- 6-speed sequential paddle-shift transmission with full auto mode
- 17" Alloy wheels
- Front fog lights
- Leather trim with 5-stage heated seats
- Integrated Bluetooth®
- Premium Bose® audio system with 6-CD changer, AM/FM radio, seven speakers, MP3 / WMA-compatibility and auxiliary (AUX) input jack
- Cruise control



## MAZDA MX-5 BODYSTYLES

### Mazda MX-5 Soft-top



### Mazda MX-5 Roadster Coupe







## *MAKE IT YOURS*

Why not make a statement with genuine Mazda alloy wheels that are precision cast and machined, and then finished to a jewel-like quality? And how about creating a meaner stance with an Eibach suspension-lowering kit?



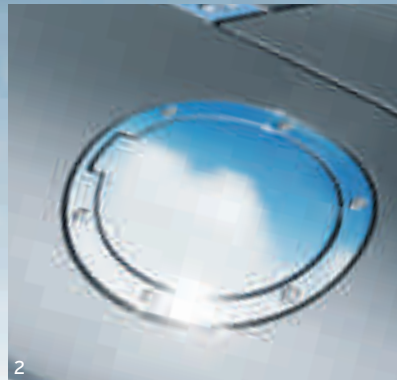
- 1 16" Alloy wheel (Accessory).
- 2 17" Alloy wheel (Accessory / Sport Tech / PowerShift).
- 3 17" Alloy wheel (Accessory).



## *MAKE IT YOURS*

Everyone wants to be a little bit different. To stand apart. That's why we've created so many opportunities for you to stamp your personality on your new Mazda MX-5. Go ahead: have some fun.

- 1 Wind deflector, clear type.
- 2 Fuel filler lid, brushed and polished aluminium finishes.
- 3 Door handle covers, brushed and polished aluminium finishes.
- 4 Side marker ring, brushed and polished aluminium finishes.
- 5 Illuminated scuff plate set.







## MAKE IT YOURS

The inside of the Mazda MX-5 is a very special place to be. So why not make it your very own special place to be?  
After all, you're going to want to spend a lot of time here.



1



2



3

- 1 Gear knob, brushed aluminium finish, with or without illumination.
- 2 Handbrake lever, brushed aluminium finish.
- 3 Luxury or tailored car mat set.

MX-5



## MAZDA FINANCIAL SERVICES

### Who are we?

Mazda Financial Services is a division of Santander Consumer, the leading Consumer Finance House in Europe. We provide finance facilities for your Mazda vehicle through Mazda dealers at competitive rates together with additional products. We are one of the UK's leading 'point of sale' finance providers, which means your Mazda dealer can provide you with a convenient "One-Stop Shop" when choosing your next Mazda. From our wide range of finance plans, there's an option available to you, whether you are thinking of a new or used car.

### What you can expect from Mazda Financial Services:

- Face-to-face service from trained, plain-talking people at your local Mazda Dealer.
- Assistance in renewing your car. We'll help you choose the right finance package to enable you to renew your Mazda car as often as you would ideally like.
- Fixed Interest Rates: The interest rate on your loan is fixed for the duration of the agreement.
- Flexible terms tailored to your motoring needs: As specialists in Mazda vehicles we can tailor a finance package to both your budget and your motoring / ownership needs.

Please ask your sales executive for a tailor-made finance quote for your new car.

### Mazda Financial Services Finance Plans:

#### Mazda Conditional Sale:

The traditional way of buying your car. Mazda Conditional Sale is flexible and simple, with a range of options to suit everyone.

#### The benefits

- Simple – fixed, equal, regular instalments.
- Predictable – pay all your instalments and you own the car.
- Flexible – you determine your repayment period at the start of your contract, meaning that you have total control of your budget.

#### How it works

1. Choose your Mazda. Tell your dealer the deposit and repayment period you want, from 12-60 months.
2. Agree your repayments. These are based on how much is left to pay, plus interest where applicable.
3. Drive away the moment we activate your agreement.

At the end of your contract, when all instalments have been made, you then have two choices:

- **Renew:** Choose another Mazda. The car is yours; you can part exchange it for another Mazda and use the value as your deposit.
- **Retain:** Keep the car. The car is yours once all instalments have been made.

#### Mazda Personal Contract Purchase:

The finance plan that helps you to change your Mazda car at more regular intervals.

#### The benefits

- You can fund your car over shorter periods, so you get the chance to change more often.
- The flexibility at the end of the agreement to choose to renew, retain or return your Mazda.
- You're protected against any fall in used car prices by an Optional Final Payment (OFP).

#### How it works

1. Choose any new or used Mazda. Estimate your annual mileage.
2. We estimate the minimum amount your car will be worth once your contract finishes – the OFP.
3. To work out your regular payments we add any interest charges and calculate the monthly payments based on your deposit and the OFP.
4. Drive away the moment we activate your agreement.

At the end of your contract, when all instalments have been made, you then have three choices.

- **Renew:** Choose another Mazda. Use any excess value above the OFP towards a deposit for another Mazda. You can trade in your car at any time or sell it privately having settled your account.
- **Retain:** Keep the car. Simply pay the OFP, and the car is yours.
- **Return your car:** There's nothing more to pay if the car's in good condition and within the agreed mileage.

## OUR COMMITMENT TO THE ENVIRONMENT

Mazda makes cars that excite, look stylish and appealing, are fun to drive and make you want to get behind the wheel again and again. But we are equally committed to the environment, to the creation of a sustainable future for all. This means limiting the Earth's resources that we use and always considering the environmental impact in everything we do.

Our sustainability programme is dedicated to the development of clean technologies. This covers every aspect of a vehicle's impact on the environment – from planning and development, through to manufacturing, use and eventual recycling / disposal. Below are just three examples of how our environmental policies have led to significant advances in 'green' technology.

#### Plant-derived plastics

Our interior car plastics use carbon-neutral\* plant-derived biomass – an industry first.

- Reduces reliance on fossil fuels
- Cuts CO<sub>2</sub> emissions
- Uses sustainable raw materials
- Requires 30% less energy to produce than petroleum based plastics
- Is three times stronger than conventional bioplastics
- Has 25% higher heat resistance than conventional bioplastics
- Produces lighter, stronger parts improving fuel economy

\*CO<sub>2</sub> released when the bioplastic decomposes or is burned is comparable to the amount absorbed by growing plants, having a negligible impact on total atmospheric CO<sub>2</sub> levels.

#### Semi-dry machining process

Conventional machining of cast metal parts uses huge amounts of water-based coolant to cool and lubricate cutting tools, and remove and collect waste metal. With Mazda's semi-dry machining process, we have substituted large volumes of coolant for tiny quantities of atomised biodegradable oil in a jet of air.

#### The benefits of semi-dry machining:

- 84% reduction in the amount of coolant required
- Reduced electricity consumption by 40% on machining lines
- 80% cut in waste liquids

#### Recycling

Mazda has made a substantial commitment to recycling.

#### Mazda Premacy Hydrogen RE

- We have reduced waste material in our production facilities by 55% since 1990
- In 1992 we became the first car manufacturer to recycle bumpers
- Over 75% of our plastic parts can be recycled
- All of our gaskets and brake-pads are asbestos-free
- There are no ozone-damaging CFCs in our polyurethane products (such as the foam padding in seats, armrests and steering wheels)
- Many of our plants have passed the stringent ISO 14001 test – commonly known as the environmental ISO



## MECHANICAL FEATURES AND MODEL AVAILABILITY

### Engines:

- 1.8i SE**
- 1798cc in-line 4-cylinder, 16-valve, DOHC, developing 126ps (93kW) at 6500rpm and 167Nm at 4500rpm.
  - CO<sub>2</sub> emissions of 167g/km.
  - Electronic fuel injection.
  - Battery – 46B24L.
  - Alternator – 12V-100A.
- 2.0i Sport Tech**
- 1999cc in-line 4-cylinder, 16-valve, DOHC, developing 160ps (118kW) at 7000rpm and 188Nm at 5000rpm.
  - CO<sub>2</sub> emissions of 181g/km.
  - Electronic fuel injection.
  - Battery – 46B24L.
  - Alternator – 12V-100A.
- 2.0i Power Shift**
- 1999cc in-line 4-cylinder, 16-valve, DOHC, developing 160ps (118kW) at 6700rpm and 188Nm at 5000rpm.
  - CO<sub>2</sub> emissions of 188g/km.
  - Electronic fuel injection.
  - Battery – 46B24L.
  - Alternator – 12V-100A.

### Transmissions:

- 5-speed manual (1.8i SE), 6-speed manual (2.0i Sport Tech) and 6-speed automatic with paddle-shift (2.0i PowerShift) – giving precise, positive shift feel to provide a feeling of unity between driver and vehicle.

### Body:

- Self-supporting rigid and torsion-resistant all-steel body with defined crumple zones for the front and rear sections, stable passenger safety cell with side impact reinforcement in the doors.
- Mazda Advanced Impact Distribution and Absorption System (MAIDAS) designed to secure the critical interior space in the event of an accident.
- Supplementary Restraint System (SRS) – central control unit and crush sensors, seatbelt pre-tensioners, load limiters and airbag system.
- Two seater.
- Manually-operated soft-top (with detachable hardtop available as an optional accessory at extra cost) or electrically-operated retractable hardtop (Mazda MX-5 Roadster Coupe).

### Chassis and Suspension:

- Front: Independent double-wishbone suspension with gas-filled, monotube shock absorbers and aluminium upper and lower arms for low unsprung weight.
- Rear: Multi-link suspension with optimised geometry and gas-filled, monotube shock absorbers.
- Bilstein dampers and suspension strut tower bar (2.0i Sport Tech / Sport Tech Nav models only).

### Brake System:

- Four-wheel Anti-lock Braking System (ABS) with Electronic Brake-force Distribution (EBD).
- Front: 290mm diameter ventilated discs.
- Rear: 280mm diameter discs.

## EQUIPMENT

### Model Availability

	1.8i	2.0i
SE	■	–
Sport Tech / Sport Tech Nav	–	■
PowerShift	–	■

■ = Available.

### Engine Type

	1.8 MZR	2.0 MZR	2.0 MZR Automatic
Displacement (cc)	1798	1999	1999
Bore x stroke (mm)	83.0 x 83.1	87.5 x 83.1	87.5 x 83.1
Valves per cylinder	4	4	4
Maximum output [PS (kW) / rpm]	126 (93) / 6500	160 (118) / 7000	160 (118) / 6700
Maximum torque (Nm / rpm)	167 / 4500	188 / 5000	188 / 5000
Compression ratio	10.8	10.8	10.8

### Transmission

Type	5-speed manual	6-speed manual	6-speed automatic
Gear ratios:			
1st	3.136	3.709	3.538
2nd	1.888	2.190	2.060
3rd	1.330	1.536	1.404
4th	1.000	1.177	1.000
5th	0.814	1.000	0.713
6th	–	0.832	0.582
Reverse	3.758	3.603	3.168
Final gear ratio	3.909	3.727	4.100

### Steering

Steering gear	Power-assisted rack and pinion		
Minimum turning circle: kerb-to-kerb (m)	9.4	9.4	9.4

### Performance and Economy

	1.8i	2.0i	2.0i PowerShift
Acceleration 0-62mph (0-100km/h) in sec <sup>1)</sup>	9.9 (9.9)	N/A (7.9)	N/A (8.9)
Top speed (mph) <sup>1)</sup>	121 (123)	N/A (136)	N/A (121)
Fuel consumption <sup>2)</sup> [mpg (l/100km)]:			
Urban	28.8 (9.8)	25.9 (10.9)	25.4 (11.1)
Extra Urban	50.4 (5.6)	46.3 (6.1)	45.6 (6.2)
Combined	39.8 (7.1)	36.2 (7.8)	35.3 (8.0)
CO <sub>2</sub> emissions <sup>2)</sup> (g/km)	167	181	188
EC emission level	EC Stage V		
Recommended fuel	Unleaded 95 RON		
Fuel tank capacity (litres)	50	50	50

<sup>1)</sup>Acceleration and Top speed figures for Mazda MX-5 Roadster Coupe are shown in brackets. <sup>2)</sup>Fuel consumption and CO<sub>2</sub> emissions figures are obtained under standardised test conditions defined in European Legislation using a representative model. This allows direct comparison between different models from different manufacturers, but may not represent the actual fuel consumption achieved in 'real world' driving conditions. More information is available at <http://carfueldata.direct.gov.uk/>

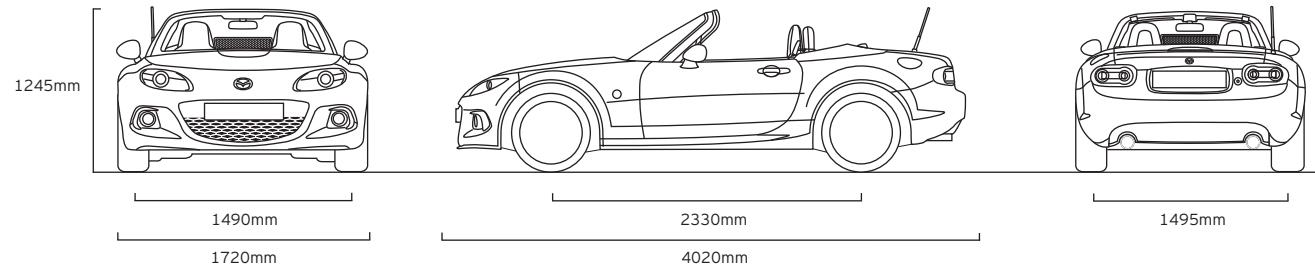




## EQUIPMENT

Dimensions and Weights	1.8 MZR	2.0 MZR	2.0 MZR Automatic
Overall length / width / height (mm)	4020 / 1720 / 1245	4020 / 1720 / 1245	4020 / 1720 / 1245
Ground clearance between the axles – unladen (mm)	136	136	136
Front track / Rear track (mm)	1490 / 1495	1490 / 1495	1490 / 1495
Wheelbase (mm)	2330	2330	2330
Headroom / leg room / shoulder room (mm)	950 / 1096 / 1352	950 / 1096 / 1352	950 / 1096 / 1352
Cargo volume, acc. to VDA (l)	150	150	150
Brake disc diameter (mm):			
Vented front disc	290	290	290
Rear disc	280	280	280
Kerb weight (kg) incl. driver (75 kg) <sup>1)</sup>	1150 (1230)	N/A (1248)	N/A (1261)
Permitted gross vehicle weight (kg)	1375	1375	1375
Permitted axle load, front / rear (kg)	680 / 705	680 / 705	680 / 705
Engine oil capacity (l)	4.6	4.6	4.6

<sup>1)</sup>Kerb weights for Mazda MX-5 Roadster Coupe are shown in brackets.



## EQUIPMENT

Safety and Security	1.8i SE	2.0i Sport Tech / Nav	2.0i PowerShift
Mazda Advanced Impact Distribution and Absorption System (MAIDAS)	●	●	●
Deployable Hood System (DHS) – in a frontal collision the bonnet raised to maximise pedestrian protection when travelling at more than 12.4mph	●	●	●
Supplementary Restraint System (SRS) – Central control unit and crash sensors, seatbelt pretensioners, load-limiters and airbag system	●	●	●
Four-wheel Anti-lock Braking System (ABS) with Electronic Brake-force Distribution (EBD)	●	●	●
Four-wheel disc brakes:           Vented front, solid rear	●	●	●
Dynamic Stability Control (DSC) with Traction Control System (TCS)	●	●	●
Limited Slip Differential (LSD)	–	●	–
Dual front airbags:           Driver and passenger	●	●	●
Passenger airbag deactivation system	●	●	●
Side airbags	●	●	●
Seatbelts:                       3-point (ELR) x 2 with pre-tensioner and force limiter	●	●	●
Seatbelt reminder (sound warning)	●	●	●
Thatcham Category 1 alarm and immobiliser system	●	●	●

### Additional Safety and Security Options

Baby and child seats:	Britax Römer Baby Safe Plus, for 0-13kg Britax Römer Kid Plus, for 15-36kg	Please contact your dealer for further information and availability.
Child seat pillow:	Duo Plus	



## EQUIPMENT

Exterior		1.8i SE	2.0i Sport Tech / Nav	2.0i PowerShift
Tyres and wheels:	205/50 R16 with 6.5J 16" alloy wheels	●	-	-
	205/45 R17 with 7J 17" alloy wheels	-	●	●
	Puncture repair kit	●	●	●
Sport suspension (Bilstein dampers)		-	●	-
Strut tower bar:	Black	-	●	●
Bumpers, front and rear:	Body colour	●	●	●
Exhaust:	Twin tailpipes	●	●	●
Door handles:	Body colour	●	-	-
	Body colour with chrome insert (Mazda MX-5 Roadster Coupe)	●	●	●
Side repeater lens:	White	●	●	●
Headlights:	Halogen, manual levelling	●	●	●
Front fog lights		-	●	●
Rear brake light, high-mounted:	Red	●	-	-
	Clear (Mazda MX-5 Roadster Coupe)	●	●	●
Rear fog light		●	●	●
Door mirrors:	Power-operated and heated, body colour housings	●	●	●
Windscreen glass:	Front HPR laminated, green	●	●	●
Style bar cladding:	Brushed aluminium	-	●	●
Fuel filler lid:	Body colour	●	●	●
Mica / Metallic / Pearlescent paint		○	○	○
Convertible top:	Premium cloth soft-top with heated glass window, manually-operated (black)	●	-	-
	Body colour power retractable hardtop, with heated rear glass window, power-operated (Mazda MX-5 Roadster Coupe)	●	●	●

● = Standard; ○ = Option at extra cost.

### Additional Exterior Options

Tyres and wheels:	See page 18 and 19 for wheel options			
Lowering suspension kit by Eibach				
Strut tower bar:	Aluminium			
Bonnet dampers				
Sports Styling Pack I <sup>1)</sup> :	Front airdam skirt, side airdam skirts, rear airdam skirt and rear lip spoiler			
Sports Styling Pack II <sup>1)</sup> :	Front and rear aero bumpers, side airdam aero skirts, and 3-piece rear spoiler			
Exhaust:	Chromed trim for standard tailpipes			
Mudflaps:	Front (not compatible with Sports Styling Packs)			
	Rear (not available with Sports Styling Packs)			
Door handles:	Polished aluminium insert			
	Brushed aluminium insert			
Side indicator bezel:	Polished aluminium			
	Brushed aluminium			
Front fog lights:	Standard type			
	Projector type			
Parking Distance Sensor (acoustic signal):	Rear			
	Front and rear			
Style bar cladding:	Polished aluminium			
	Brushed aluminium			
Chrome window frame kit				
Fuel filler lid:	Polished aluminium			
	Brushed aluminium			
Boot lid carrier system:	Trunk rack, base, with built-in brake light, 15kg maximum load capacity <sup>2)</sup>			
	Aluminium suitcase, with Mazda MX-5 logo, including fixing rails (requires leather belts for fitment on trunk rack base)			
	Leather belts, required to fix suitcase onto trunk rack base			
	Ski / snowboard attachment for trunk rack base			

Please contact your dealer for further information and availability.

<sup>1)</sup> All parts are available individually. Rear spoilers are not suitable for Mazda MX-5 Roadster Coupe. <sup>2)</sup> Not compatible with Mazda MX-5 Roadster Coupe.

## EQUIPMENT

Interior		1.8i SE	2.0i Sport Tech / Nav	2.0i PowerShift
Sport seats and integral head restraint:	Driver and passenger recline adjustment	●	●	●
	Driver's seat height adjustment	●	●	●
	Cloth trim	●	-	-
	Leather trim* with 5-stage seat heaters	-	●	●
Windblocker:	Standard type	●	●	●
Steering wheel:	Leather-wrapped, black	●	●	●
Gearshift knob:	Leather-wrapped, black	●	●	●
Handbrake lever:	Leather-wrapped grip with silver release knob	●	●	●
Scuff plates:	Stainless steel, polished, with Mazda MX-5 logo	●	●	●
Alloy pedal set		-	●	-
Auto dimming rear view mirror		-	●	●
Interior door handles:	Silver	●	●	●
Integrated Bluetooth® system <sup>1)</sup> :		-	● / -	●
	Operated via steering wheel controls	-	● / -	●
Audio:	AM/FM radio	●	●	●
	MP3 and WMA-compatible single CD module and six speakers	●	- / ●	-
	Bose® premium sound system featuring a digital amplifier with six channels of customised equalisation switching between automatic top up and top down and an MP3 and WMA-compatible 6-CD changer and seven speakers	-	● / -	●
	Steering wheel-mounted audio controls	●	●	●
	Auxiliary (AUX) input jack	●	●	●
	USB connectivity	-	- / ●	-
Mazda navigation system:		-	- / ●	-
	Integrated 5.8" TomTom satellite navigation, with Bluetooth <sup>2)</sup> , operated via the touch screen. Powered by the latest TomTom technology, includes advanced lane guidance, IQ routes, voice control and a 3 month free subscription to TomTom LIVE services including TomTom Places search, HD-traffic and speed camera alerts (after 3 months a subscription can be purchased from TomTom) <sup>2)</sup>	-	- / ●	-
Meter set:	Engine oil-pressure indicator (gauge-type)	●	●	●
	Water temperature gauge	●	●	●
	Amber / red illumination	●	●	●
	Silver-finish meter rings	●	●	●
Instrument panel trim:	Glossy dark grey	●	●	●
Door speaker bezels:	Brushed aluminium	-	●	●
Headlights on reminder (sound warning)		●	●	●
Digital clock		●	●	●
Trip computer featuring exterior temperature gauge and average fuel consumption		●	●	●
Console with cup holders		●	●	●
Lockable glovebox		●	●	●
Further storage spaces:	Seatback pocket (passenger side)	●	●	●
	Rear centre box with lid (lockable)	●	●	●
	Door multi-pockets	●	●	●

● = Standard; \*Leather refers to centre seat facing and side support. <sup>1)</sup>For Sport Tech and Powershift models please refer to [www.mazdahandsfree.com](http://www.mazdahandsfree.com) for the latest information regarding compatibility and functionality of mobile phone / portable devices. <sup>2)</sup>For Sport Tech Nav models please refer to [www.tomtom.com/phones/compatibility](http://www.tomtom.com/phones/compatibility). <sup>2)</sup>Please note that TomTom LIVE Services rely on a valid GPRS signal being available. This function may not operate in areas of low signal strength.



## EQUIPMENT

### Additional Interior Options

Windblocker:	Clear type Mesh type
Gearshift knob:	Brushed aluminium, with or without illumination
Gearshift surround:	Piano black
Handbrake:	Brushed aluminium Wood (mahogany)
Scuff plates:	Stainless steel, brushed with Mazda MX-5 logo Illuminated, with Mazda MX-5 logo
Foot pedals:	Aluminium
Audio:	MD module 6-CD MP3 changer module iPod and USB adapter Auxiliary (AUX) input jack for iPod and MP3 player iPod / iPhone Bluetooth® adapter
	Pioneer Multimedia Satellite Navigation System
	Portable Satellite Navigation System by Garmin
Instrument panel trim:	Wood
Door speaker bezels:	Brushed aluminium
	Ashtray kit
	Cigarette lighter
	Map net
Rear trim storage recesses:	Behind front seats, with lockable lids in stainless steel with Mazda MX-5 logo
Rear storage options:	Boot liner with Mazda MX-5 logo

Please contact your dealer for further information and availability.

## EQUIPMENT

### Comfort and Convenience

	1.8i SE	2.0i Sport Tech / Nav	2.0i PowerShift
Remote central locking with deadlocking and remote boot release	●	●	●
Power steering	●	●	●
Cruise control: Operated via steering wheel controls	-	●	●
Electric windows with one-touch auto down	●	●	●
Air conditioning: Automatic Climate Control	●	●	●
Driver footrest	●	●	●
Boot lid opener, electric	●	●	●
Fuel flap opener	●	●	●

● = Standard.

### Additional Comfort and Convenience Options

Floor mats:	Carpet floor mat, 'Tailored', black with Mazda MX-5 logo	Please contact your dealer for further information and availability.
	Carpet floor mat, 'Luxury', black with Mazda MX-5 logo	

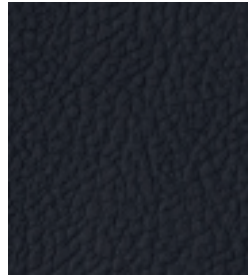




Seat Trims



Black cloth



Black leather<sup>1)</sup>

Interior Trim	1.8i SE	2.0i Sport Tech / Nav	2.0i PowerShift
Black cloth	■	-	-
Black leather <sup>1)</sup>	-	■	■

Soft-top Trim	1.8i SE	2.0i Sport Tech / Nav	2.0i PowerShift
Black cloth	■	-	-
Grey cloth <sup>2)</sup>	■	-	-

Solid Body Colour	1.8i SE	2.0i Sport Tech / Nav	2.0i PowerShift
True Red (A4A)	■	■	■

Metallic, Mica and Pearlescent Body Colours*		1.8i SE	2.0i Sport Tech / Nav	2.0i PowerShift
Aluminium Silver Metallic (38P)		■	■	■
Crystal White Pearlescent (34K)		■	■	■
Jet Black Mica (41W)		■	■	■
Meteor Grey Mica (42A)		■	■	■
Stormy Blue Mica (35J)		■	■	■
Zeal Red Mica (41G)		■	■	■

■ = Available. \*Metallic / Mica / Pearlescent paint available at extra cost. Colour availability is limited on certain models, please consult your local dealer for full availability. <sup>1)</sup>Leather refers to centre seat facing and side supports. <sup>2)</sup>Accessory soft-top trim available at extra cost.



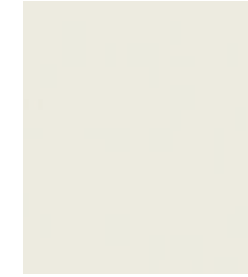
True Red (A4A)



Aluminium Silver Metallic\* (38P)



Zeal Red Mica\* (41G)



Crystal White Pearlescent\* (34K)



Meteor Grey Mica\* (42A)



Stormy Blue Mica\* (35J)



Jet Black Mica\* (41W)



Black premium cloth



Grey cloth<sup>\*\*</sup>

\*Available at additional cost. \*\*Optional accessory available at extra cost.







### **Manufacturer's Warranty – 3-Year Cover**

Every Mazda is designed and built to the highest standards of performance, comfort and reliability. For your further reassurance, Mazda also provides a full 3-year / 60,000-mile warranty cover, Mazda Roadside Assistance<sup>1)</sup>, 3-year paintwork warranty and a 12-year anti-perforation warranty.

### **Mazda Momentum – New Vehicle Extended Warranty**

At any time during the manufacturer's warranty period, you may purchase a Mazda Momentum extended warranty package. Three options are available. Your Mazda dealer will be pleased to provide you with details.

### **Free Mazda Accident Aftercare**

Mazda Accident Aftercare is designed to assist you following a road traffic accident. Should you ever be involved in an accident or need to make an insurance claim, 'Mazda First' will liaise directly with your insurer to process the claim and ensure that your vehicle is repaired at a Mazda approved bodyshop using only genuine Mazda parts, in addition to other benefits such as providing you with a free courtesy car and maintaining your Mazda warranties.

### **Mazda Contract Hire\***

Mazda Contract Hire offers low running costs with market-driven residual values, resulting in extremely competitive ownership costs for businesses and individuals. To find out more about the benefits of Mazda Contract Hire, please speak to your Mazda dealer or phone 0844 600 1410.

### **Digital Service Record**

The Mazda Digital Service Record (DSR) system provides increased security against counterfeit service documents and odometer tampering, and makes it easy to keep the service history up-to-date. Stored on a central database, the DSR replaces the traditional paper service book and ensures a secure, accurate and permanent service history for the life of the vehicle.

### **Your Mazda dealer:**

Mazda Motors UK Limited reserves the right to introduce changes in specification and equipment due to its ongoing product development. Colour and trim samples shown in this brochure may vary from the actual colours because of the limitations in the printing process. It is recommended that you consult your Mazda dealer when referring to these.

<sup>1)</sup>Please visit [www.mazda.co.uk/buying-owning/buying/roadside-assistance/](http://www.mazda.co.uk/buying-owning/buying/roadside-assistance/) for more details on your Mazda Roadside Assistance coverage.

Bose® and Centerpoint® are registered trademarks of Bose Corporation in the U.S. and other countries. Used with permission.

The Bluetooth® word mark and logos are owned by the Bluetooth SIG, Inc. and any use of such marks by Mazda Motor Company is under licence. Other trademarks and trade names are those of their respective owners.

\*Mazda Contract Hire is provided by ALD Automotive Ltd, trading as Mazda Contract Hire, Oakwood Park, Lodge Causeway, Fishponds, Bristol, BS16 3JA. Guarantees / Indemnities may be required. ALD Automotive Ltd is incorporated in the UK and regulated by the Financial Services Authority in respect of general insurance products.

October 2013.

**Internet: [www.mazda.co.uk](http://www.mazda.co.uk)  
Mazda Helpline: 08457 48 48 48**

