

*Mazda 2*



zoom-zoom  
zoom-zoom  
zoom-zoom  
zoom-zoom



"THE HIROSHIMA SPIRIT IS TO NEVER GIVE UP, TO PURSUE EXCELLENCE. TO MAINTAIN A "CAN DO" ATTITUDE."



"WITH A COMPACT, LIGHT ENGINE, A LIGHT BODY AND A BEAUTIFUL DESIGN. WE AIM TO CREATE A NEW STANDARD OF CARS."



"MAZDA WILL CONTINUE TO CHALLENGE, IN ALL OUR PURSUITS. WE'LL ALWAYS DO THINGS DIFFERENTLY."

**MASAHIRO MORO**  
EXECUTIVE OFFICER



**FOLLOW THE STORY AT [Mazda.co.uk](http://Mazda.co.uk)**



"DESPITE ADVANCEMENT IN TECHNOLOGY, YOU CAN ONLY GO SO FAR WITH COMPUTERS OR OTHER SCIENTIFIC MEANS. ULTIMATELY, IT DEPENDS ON THE CARMAKER'S SKILL AND SENSITIVITY."

**HIROTAKA KANAZAWA**  
MANAGING EXECUTIVE OFFICER



## *PULSE-RACING*

Vibrant, dynamic and stylish Mazda2 is everything a sports car should be, yet with all the versatility of a compact hatch. It's light but strong. Fun but fuel-efficient. Agile but controlled. We wouldn't have it any other way. Neither should you.



**Electronic Power Assisted Steering (EPAS)**  
With EPAS, the required steering effort is proportional to the speed you are travelling. Minimal effort is needed at low speeds, making Mazda2 easier to manoeuvre. At higher speeds, the steering has less assistance, making it heavier and therefore, very precise, while also enhancing the feeling of stability.

Image shows Mazda2 Sport Venture with optional Titanium Flash Mica paint.





## *EYE-CATCHING*

Mazda2 exudes style and energy. You can see it in the sleek curvaceous lines, expressing premium sports styling. Mazda2 features a sporty aggressive stance, sharp contours and precise curves. The Mazda2 wants to be driven, it's agile, taut and eager to entertain.



# HEAD-TURNING

With Mazda2 fun comes every time you turn the key. And with whichever model you choose, you'll need to get used to heads turning as you pass by.



From the nimble SE Air Con to the athletic Sport Venture – and the models in between – there's a Mazda2 to suit everyone.

**Available in 3 refined and fun to drive petrol engines:**

- 1.3 75ps petrol SE Air Con
- 1.3 84ps petrol Tamura and Sport Venture
- 1.5 102ps petrol Tamura Nav Automatic





## *CAR-CONTROLLING*

Clearly visible instruments, with a premium touch. Easy-to-reach, intuitive controls. Adjustable, comfortable seats. Electronic Power Assisted Steering (EPAS) for fingertip precision with plenty of feedback. These are sports car essentials – and each is there to be enjoyed in every Mazda2.

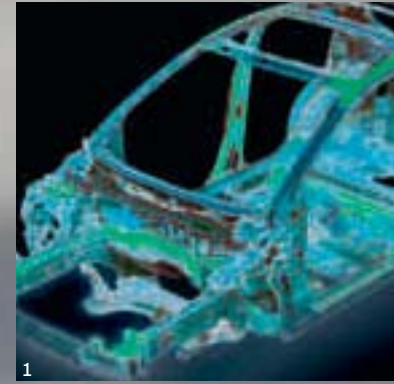
**Steering wheel-mounted remote controls**  
Control your audio (excludes SE Air Con) without removing your hands from the wheel or your eyes from the road.

**Audio with USB**  
With Mazda2, you want to stand out from the crowd – and with the audio system featuring a USB port for iPod® connectivity, you'll never have to follow the crowd when it comes to music. Mazda2 will take care of everything else.

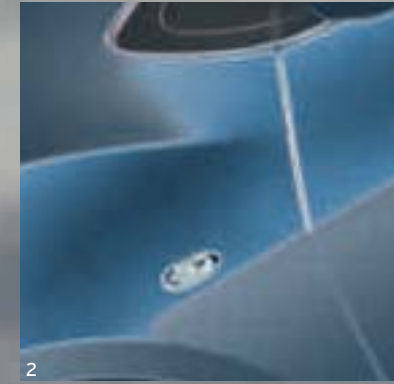


# WEIGHT-REDUCING

Taking a lead from the Mazda MX-5's weight-reducing 'gram strategy', Mazda2 weighs no more than it needs to, through the use of lightweight materials and new technologies. So it's quicker. Stops sooner. Is more nimble. And uses less fuel while producing lower CO<sub>2</sub> emissions.



**1 Bodyshell**  
Increased rigidity and strengthened reinforcements all add to the safety of Mazda2. But thanks to smaller dimensions and an optimised body structure, Mazda2 – though stronger – is also very light.



**2 High-tensile steel**  
The use of high and ultra-high tensile steel is combined with precisely calibrated deformation zones to create a body that is both lightweight and strong.



**3 Suspension**  
Optimising the suspension reduces unsprung weight and increases stability for sharper handling and improved ride comfort.





## *FUEL-SAVING*

Mazda2 is proof that 'fun to drive' and 'fuel-efficient' can be combined in one amazing car. Mazda2 engines extract the maximum performance out of every drop of fuel used. Each engine combines impressive performance with incredible fuel economy. How about 0-62mph in 11.9 seconds for the 1.5-litre Tamura Nav Automatic model, or 56.5mpg\* for the 1.3-litre petrol engine.





# LIFE-PRESERVING

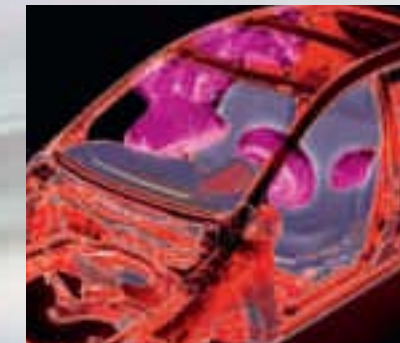
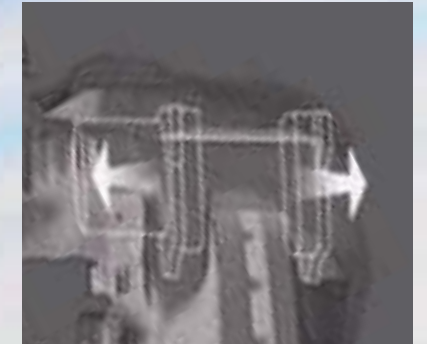
Mazda2's quick responses and superb handling are your best defence when faced with an emergency. But if a collision is unavoidable, Mazda2 helps minimise the potential consequences with the Mazda Advanced Impact Distribution and Absorption System (MAIDAS) which reduces the risk of cabin deformation, keeping Mazda2's occupants protected. And with shock absorbing crumple zones, a rigid passenger safety cell, seatbelts and multiple airbags – all contribute to its Euro NCAP 5-star adult occupancy rating.

## DSC system

Dynamic Stability Control (DSC) enhances driving stability when cornering and during rapid evasive manoeuvres by automatically limiting engine power and applying the brakes on individual wheels, thus maintaining control in situations when the vehicle might otherwise tend to oversteer or understeer.

## 4W-ABS

Four-wheel Anti-lock Braking System (4W-ABS) with Electronic Brake-force Distribution (EBD) is designed to prevent skidding, helping you to stay in control during emergency braking on wet or snow-covered roads. Surefooted under pressure.



## Airbags

Dual front, side and curtain airbags combine with front seatbelt pre-tensioners and load-limiters to significantly reduce the likelihood of injury in a collision.

## ISOFIX system

The ISOFIX system provides secure anchorage points for child seats. You can quickly attach an ISOFIX seat to ISOFIX anchorages with a simple push-fitting. These anchorages and seat fittings are in a standard location, so any ISOFIX seat can be fitted to any car with the ISOFIX system.





# THE RANGE

Mazda has an enviable reputation for quality and reliability, and everything about Mazda2 – from minor details like the appearance of the blackout-finish dials to the prospect of mile after mile of trouble-free motoring – Mazda2 is designed to satisfy your every need as a driver and owner. All that's left to do is decide which Mazda2 best suits you!



## *Mazda2 SE AIR CON*

- 15" Alloy wheels
- Rear spoiler
- Front electric windows with one-touch driver's auto down and up
- Electrically-adjustable door mirrors
- Manual air-conditioning
- AM/FM radio, CD player, auxiliary (AUX) input jack and two speakers
- USB connectivity
- Electric Power Assisted Steering (EPAS)
- Driver and front passenger airbags
- Blackout finish dials

## *Mazda2 TAMURA NAV AUTOMATIC*

In addition to SE Air Con:

- 16" Alloy wheels
- 6.1" Alpine satellite navigation
- Privacy glass
- Leather steering wheel
- Steering wheel audio controls
- Trip computer
- CD player with four speakers
- Body-colour, heated and folding electric mirrors
- Side and curtain airbags
- Dynamic Stability Control (DSC) and Traction Control System (TCS)

## *Mazda2 TAMURA*

In addition to SE Air Con:

- 16" Alloy wheels
- Side skirts
- Sports headlights
- Privacy Glass
- Leather steering wheel
- Steering wheel audio controls
- Trip Computer
- CD player with four speakers
- Body-coloured, heated and folding electric mirrors
- Side and curtain airbags

## *Mazda2 SPORT VENTURE*

In addition to Tamura:

- 16" Bright alloy wheels
- 6.1" Alpine satellite navigation
- Sports cloth seats
- Dusk-sensing lights
- Rain-sensing front wipers
- Rear parking sensors
- Front fog lights
- Bright silver-coloured door mirrors
- Climate control air-conditioning
- Rear electric windows



# MAKE IT YOURS

It's your Mazda2, so why not really make it yours? Stunning 15" and 16" alloy wheels – combine with our high-quality interior and exterior enhancements to make your Mazda2 truly reflect your personality.



- 1 15" Alloy wheel – design 118 (Accessory / SE Air Con).
- 2 15" Alloy wheel – design 54 (Accessory).
- 3 16" Alloy wheel – design 144 (Accessory / Tamura, Tamura Nav Automatic).
- 4 16" Alloy wheel with titanium finish – design 54A (Accessory).
- 5 16" Alloy wheel with matt black finish – design 54B (Accessory).



- 1 Black gloss door mirror housings.
- 2 Sports side skirts.
- 3 Sebring sports exhaust.
- 4 Rear roof spoiler.
- 5 Scuff plates.
- 6 Aluminium pedal set and footrest.
- 7 Luxury floor mats.
- 8 Rear bumper sports trim.





1



2



3



4



5



6



7

- 1 Pioneer multimedia navigation system.
- 2 Bluetooth® music function hands-free kit.
- 3 Centre armrest with storage.
- 4 Trunk box.
- 5 Trunk storage box.
- 6 ISOFIX Duo Plus baby seat.
- 7 Roof carrier system.

## MAKE IT YOURS

Hands-free communication to help you stay in touch and satellite navigation to help you stay on course can be combined with storage and transportation enhancements to make your Mazda2 even more enjoyable to live with.





### Who are we?

Mazda Financial Services is a division of Santander Consumer, the leading Consumer Finance House in Europe. We provide finance facilities for your Mazda vehicle through Mazda dealers at competitive rates together with additional products. We are one of the UK's leading 'point of sale' finance providers, which means your Mazda dealer can provide you with a convenient "One-Stop Shop" when choosing your next Mazda. From our wide range of finance plans, there's an option available to you, whether you are thinking of a new or used car.

### What you can expect from Mazda Financial Services:

- Face-to-face service from trained, plain-talking people at your local Mazda dealer
- Assistance in renewing your car. We'll help you choose the right finance package to enable you to renew your Mazda car as often as you would ideally like
- Fixed Interest Rates. The interest rate on your loan is fixed for the duration of the agreement
- Flexible terms tailored to your motoring needs. As specialists in Mazda vehicles, we aim to tailor a finance package to both your budget and your motoring / ownership needs

Please ask your sales executive for a tailor-made finance quote for your new car.

### Mazda Financial Services Finance Plans:

#### Mazda Conditional Sale:

The traditional way of buying your car. Mazda Conditional Sale is flexible and simple, with a range of options to suit everyone.

#### The benefits

- Simple – fixed, equal, regular instalments
- Predictable – pay all your instalments and you own the car
- Flexible – you determine your repayment period at the start of your contract, meaning that you have total control of your budget

#### How it works

1. Choose your Mazda. Tell your dealer the deposit and repayment period you want, from 12-60 months.
2. Agree your repayments. These are based on how much is left to pay, plus interest where applicable.
3. Drive away the moment we activate your agreement.

At the end of your contract, when all instalments have been made, you then have two choices:

- **Renew:** Choose another Mazda. The car is yours; you can part exchange it for another Mazda and use the value as your deposit
- **Retain:** Keep the car. The car is yours once all instalments have been made

#### Mazda Personal Contract Purchase:

The finance plan that helps you to change your Mazda car at more regular intervals.

#### The benefits

- You can fund your car over shorter periods, so you get the chance to change more often
- The flexibility at the end of the agreement to choose to renew, retain or return your Mazda
- You're protected against any fall in used car prices by an Optional Final Payment (OFP)

#### How it works

1. Choose any new or used Mazda. Estimate your annual mileage.
2. We estimate the minimum amount your car will be worth once your contract finishes – the OFP.
3. To work out your regular payments, we add any interest charges and calculate the monthly payments based on your deposit and the OFP.
4. Drive away the moment we activate your agreement.

At the end of your contract, when all instalments have been made, you then have three choices:

- **Renew:** Choose another Mazda. Use any excess value above the OFP towards a deposit for another Mazda. You can trade in your car at any time or sell it privately having settled your account
- **Retain:** Keep the car. Simply pay the OFP, and the car is yours
- **Return your car:** There's nothing more to pay if the car's in good condition and within the agreed mileage

Mazda makes cars that excite, look stylish and appealing, are fun to drive and make you want to get behind the wheel again and again. But we are equally committed to the environment, to the creation of a sustainable future for all. This means limiting the Earth's resources that we use and always considering the environmental impact in everything we do.

Our sustainability programme is dedicated to the development of clean technologies. This covers every aspect of a vehicle's impact on the environment – from planning and development, through to manufacturing, use and eventual recycling / disposal. Below are just three examples of how our environmental policies have led to significant advances in 'green' technology.

#### Plant-derived plastics

Our interior car plastics use carbon-neutral\* plant-derived biomass – an industry first.

#### Benefits:

- Reduces reliance on fossil fuels
- Cuts CO<sub>2</sub> emissions
- Uses sustainable raw materials
- Requires 30% less energy to produce than petroleum-based plastics
- Is three times stronger than conventional bioplastics
- Has 25% higher heat resistance than conventional bioplastics
- Produces lighter, stronger parts improving fuel economy

\*CO<sub>2</sub> released when the bioplastic decomposes or is burned is comparable to the amount absorbed by growing plants, having a negligible impact on total atmospheric CO<sub>2</sub> levels.

#### Semi-dry machining process

Conventional machining of cast metal parts uses huge amounts of water-based coolant to cool and lubricate cutting tools, and remove and collect waste metal. With Mazda's semi-dry machining process, we have substituted large volumes of coolant for tiny quantities of atomised biodegradable oil in a jet of air.

#### The benefits of semi-dry machining:

- 84% reduction in the amount of coolant required
- Reduced electricity consumption by 40% on machining lines
- 80% cut in waste liquids

#### Recycling

Mazda has made a substantial commitment to recycling.

- We have reduced waste material in our production facilities by 55% since 1990
- In 1992, we became the first car manufacturer to recycle bumpers
- Over 75% of our plastic parts can be recycled
- All of our gaskets and brake-pads are asbestos-free
- No ozone-damaging CFCs in our polyurethane products (such as the foam padding in seats, armrests and steering wheels)
- Many of our plants have passed the stringent ISO 14001 test – commonly known as the environmental ISO



## MECHANICAL FEATURES

### Engines:

- 1.3 MZR Petrol 75ps
- 1349cc in-line 4-cylinder, 16-valve, DOHC, front-mounted, developing 75ps (55kW) at 6000rpm and 119Nm at 3500rpm.
  - CO<sub>2</sub> emissions of 115g/km.
  - Powertrain Control Module (PCM).
  - Battery – 55D23L.
- 1.3 MZR Petrol 84ps
- 1349cc in-line 4-cylinder, 16-valve, DOHC, front-mounted, developing 84ps (62kW) at 6000rpm and 121Nm at 3500rpm.
  - CO<sub>2</sub> emissions of 115g/km.
  - Powertrain Control Module (PCM).
  - Battery – 55D23L.
- 1.5 MZR Petrol 102ps Automatic
- 1498cc in-line 4-cylinder, 16-valve, DOHC, front-mounted, developing 102ps (75kW) at 6000rpm and 133Nm at 4000rpm.
  - CO<sub>2</sub> emissions of 145g/km.
  - Powertrain Control Module (PCM).
  - Battery – 50D20L.

### Transmissions:

- 5-speed manual – giving precise, positive shift feel to provide a feeling of unity between driver and vehicle.
- 4-speed automatic (only available on 1.5 Petrol 102ps).

### Body:

- High-rigidity and torsion-resistant all-steel body with defined crush zones for the front and rear sections, stable passenger safety cell with side impact reinforcement in the doors.
- Mazda Advanced Impact Distribution and Absorption System (MAIDAS) designed to secure the critical interior space in the event of an accident.
- Supplementary Restraint System (SRS) comprising central control unit and crash sensors, seatbelt pre-tensioners, load-limiters and front airbags.

### Chassis and Suspension:

- Front: Independent suspension with MacPherson struts, lower A-arms, torsion bar.
- Rear: Twist-beam, coil springs, trailing arms (torsion beam).

### Brake System:

- Hydraulic, diagonally divided dual-circuit system with power brake unit.
- Anti-lock Braking System (ABS) with Electronic Brake-force Distribution (EBD) and Emergency Brake Assistance (EBA).
- Front: 258mm ventilated disc brakes.
- Rear: 200mm drum brakes.
- Mechanical parking brake acting on rear wheels.

## MODEL AVAILABILITY AND TECHNICAL DATA

| Model Availability   | 1.3 MZR 75ps | 1.3 MZR 84ps | 1.5 MZR Automatic |
|----------------------|--------------|--------------|-------------------|
| SE Air Con           | ■            | –            | –                 |
| Tamura Nav Automatic | –            | –            | ■                 |
| Tamura               | –            | ■            | –                 |
| Sport Venture        | –            | ■            | –                 |

■ = Available.

### Engine Type

|                                |                |                |                 |
|--------------------------------|----------------|----------------|-----------------|
| Displacement (cc)              | 1349           | 1349           | 1498            |
| Bore x stroke (mm)             | 74.0 x 78.4    | 74.0 x 78.4    | 78.0 x 78.4     |
| Valves per cylinder            | 4              | 4              | 4               |
| Maximum output [ps (kW) / rpm] | 75 (55) / 6000 | 84 (62) / 6000 | 102 (75) / 6000 |
| Maximum torque (Nm / rpm)      | 119 / 3500     | 121 / 3500     | 133 / 4000      |
| Compression ratio              | 10.0           | 10.0           | 10.0            |

### Transmission

| Type             | 5-speed manual | 5-speed manual | 4-speed automatic |       |
|------------------|----------------|----------------|-------------------|-------|
| Gear ratios:     | 1st            | 3.416          | 3.416             | 2.816 |
|                  | 2nd            | 1.700          | 1.700             | 1.553 |
|                  | 3rd            | 1.218          | 1.218             | 1.000 |
|                  | 4th            | 0.918          | 0.918             | 0.695 |
|                  | 5th            | 0.731          | 0.731             | –     |
|                  | Reverse        | 3.214          | 3.214             | 2.279 |
| Final gear ratio | 3.850          | 3.850          | 4.147             |       |

### Steering

|  |   |     |     |
|--|---|-----|-----|
| Steering gear                            | -- Electronic Power Assist System (EPAS) rack and pinion -- |     |     |
| Minimum turning circle: wall-to-wall (m) | 9.8   | 9.8 | 9.8 |

### Performance and Economy

|   |                             |            |            |            |
|---|-----------------------------|------------|------------|------------|
| Acceleration [0-62mph (0-100km/h) in sec]       | 14.9                        | 13.6       | 11.9       |            |
| Top speed (mph)                                 | 104                         | 106        | 105        |            |
| Fuel consumption <sup>1)</sup> [mpg (l/100km)]: | Urban                       | 45.6 (6.2) | 45.6 (6.2) | 34.9 (8.1) |
|   | Extra Urban                 | 65.7 (4.3) | 65.7 (4.3) | 53.3 (5.3) |
|   | Combined                    | 56.5 (5.0) | 56.5 (5.0) | 44.8 (6.3) |
| CO <sub>2</sub> emissions <sup>1)</sup> (g/km)  | 115                         | 115        | 145        |            |
| EC emission level                               | EC Stage V                  | EC Stage V | EC Stage V |            |
| Recommended fuel                                | ----- Unleaded 95 RON ----- |            |            |            |
| Fuel tank capacity (litres)                     | 42.8                        | 42.8       | 42.8       |            |

<sup>1)</sup>Fuel consumption and CO<sub>2</sub> emissions figures are obtained under standardised test conditions defined in European Legislation using a representative model. This allows direct comparison between different models from different manufacturers, but may not represent the actual fuel consumption achieved in 'real world' driving conditions. More information is available at <http://carfueldata.direct.gov.uk/>

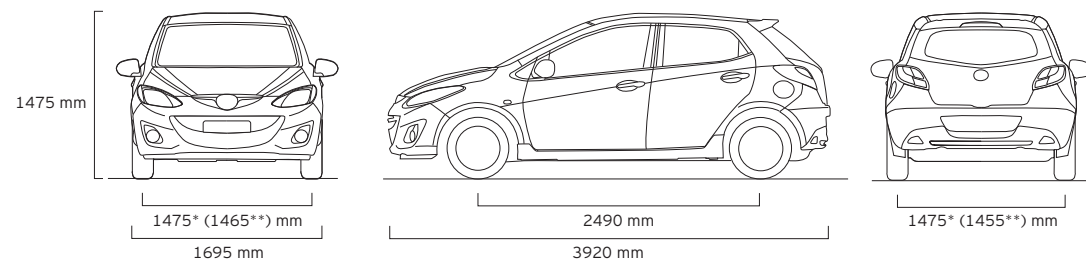


## TECHNICAL DATA

| Dimensions and Weights                            | 1.3 MZR 75ps       | 1.3 MZR 84ps       | 1.5 MZR Automatic  |
|---|--------------------|--------------------|--------------------|
| Overall length / width / height (mm)              | 3920 / 1695 / 1475 | 3920 / 1695 / 1475 | 3920 / 1695 / 1475 |
| Ground clearance between the axles – unladen (mm) | 150                | 150                | 150                |
| Track (mm):                                       |                    |                    |                    |
| Front   | 1475*              | 1465               | 1475*              |
| Rear  | 1465*              | 1455               | 1465*              |
| Wheelbase (mm)                                    | 2490               | 2490               | 2490               |
| Front headroom / leg room / shoulder room (mm)    | 1004 / 1068 / 1340 | 1004 / 1068 / 1340 | 1004 / 1068 / 1340 |
| Rear headroom / leg room / shoulder room (mm)     | 959 / 883 / 1300   | 959 / 883 / 1300   | 959 / 883 / 1300   |
| Cargo volume, acc. to VDA (l):                    |                    |                    |                    |
| 5-seat mode (to belt line)                        | 250                | 250                | 250                |
| 2-seat mode (to belt line)                        | 469                | 469                | 469                |
| 2-seat mode (to roof)                             | 787                | 787                | 787                |
| Ventilated front disc diameter (mm)               | 258                | 258                | 258                |
| Rear drum diameter (mm)                           | 200                | 200                | 200                |
| Kerb weight (kg) incl. driver (75kg) min.:        | 1081               | 1087               | 1110               |
| Permitted gross vehicle weight (kg):              | 1485               | 1485               | 1495               |
| Towing capacity (kg):                             | 12% gradient       | 900                | 900                |
| Maximum roof load (kg)                            | 50                 | 50                 | 50                 |

Towing capacity is based on a 12% gradient and tested in accordance with 92/21/EEC as amended by 95/48/EC.

### 5-door (hatchback)



\*With 15" wheels. \*\*With 16" wheels.

## EQUIPMENT

| Safety and Security   | SE Air Con | Tamura Nav Automatic | Tamura | Sport Venture |
|---|------------|----------------------|--------|---------------|
| Mazda Advanced Impact Distribution and Absorption System (MAIDAS) engineered 'triple H' body structure to help protect occupants from impact forces | ●          | ●                    | ●      | ●             |
| Supplementary Restraint System (SRS) – Central control unit with crash sensors, front seatbelt pre-tensioners, load-limiters and airbag system      | ●          | ●                    | ●      | ●             |
| Four-Wheel Anti-lock Braking System (4W-ABS) with Electronic Brake-force Distribution (EBD) and Emergency Brake Assist (EBA)                        | ●          | ●                    | ●      | ●             |
| Dynamic Stability Control (DSC) with Traction Control System (TCS)  | –          | ●                    | –      | –             |
| Driver and front passenger airbags  | ●          | ●                    | ●      | ●             |
| Front side and front and rear curtain airbags   | –          | ●                    | ●      | ●             |
| Seatbelts:  |            |                      |        |               |
| Front, 3-point (ELR) with pre-tensioners and load-limiters  | ●          | ●                    | ●      | ●             |
| Rear, 3-point (ELR) x 3   | ●          | ●                    | ●      | ●             |
| ISOFIX child seat anchorages  | ●          | ●                    | ●      | ●             |
| Thatcham Category 1 alarm and immobiliser   | ●          | ●                    | ●      | ●             |

### Additional Safety and Security Options

|             |  |  |
|-------------|--|--|
| Child seat: | Britax Römer Baby Safe Plus, for 0-13kg        | Please contact your dealer for further information and availability. |
|             | Britax Römer Baby Safe ISOFIX Plus, for 0-13kg |  |
|             | Britax Römer Duo ISOFIX Plus, for 9-18kg       |  |
|             | Britax Römer Kid Plus, for 15-36kg             |  |

### Exterior

|                           |  |   |   |   |   |
|---------------------------|--|---|---|---|---|
| Tyres and wheels:         | 185/55 R15 tyres on 15" alloy wheels                             | ● | – | – | – |
|                           | 195/45 R16 tyres on 16" alloy wheels                             | – | ● | – | – |
|                           | 195/45 R16 tyres on 16" Bright alloy wheels                      | – | – | – | ● |
| Bumpers:                  | Body colour, front and rear                                      | ● | ● | ● | ● |
| Rear spoiler              |  | ● | ● | ● | ● |
| Side airdam skirts        |  | – | – | ● | ● |
| Privacy Glass:            | Rear and rear side windows                                       | – | ● | ● | ● |
| Door handles:             | Black  | ● | – | – | – |
|                           | Body-coloured  | – | ● | ● | ● |
| Wipers:                   | Front, and rear, with intermittent wipe and electric wash        | – | ● | ● | ● |
|                           | Rain-sensing front wipers  | – | – | – | ● |
| Headlights:               | Halogen  | ● | ● | – | – |
|                           | Four cylinder halogen  | – | – | ● | ● |
|                           | Dusk-sensing lights  | – | – | – | ● |
| Front fog lights          |  | – | – | – | ● |
| Parking distance sensors: | Rear   | – | – | – | ● |
| High-mounted stop light   |  | ● | ● | ● | ● |
| Door mirrors:             | Electrically adjustable, black-coloured                          | ● | – | – | – |
|                           | Electrically adjustable, heated folding mirrors, body-coloured   | – | ● | ● | – |
|                           | Electrically adjustable, heated folding mirrors, silver-coloured | – | – | – | ● |

### Additional Exterior Options

|                               |  |  |
|-------------------------------|--|--|
| Tyres and wheels:             | See page 18 for wheel options  | Please contact your dealer for further information and availability. |
| Replacement spare wheel:      | Tyre not included  |  |
| Lowering suspension by Eibach |  |  |
| Bumper:                       | Front and rear bumper corner protector   |  |
|                               | Side protector   |  |
| Front fog lights              |  |  |
| Side airdam skirts            |  |  |
| Sport exhaust:                | By Sebring   |  |
| Park Assist sensor:           | Rear acoustic signal   |  |
|                               | Front and rear acoustic signal   |  |
| Roof bar system:              | Thule ski / snowboard attachment for four pairs of skis or two snowboards, or for six pairs of skis of four snowboards |  |
|                               | Thule bicycle attachment   |  |
|                               | Thule roof box: L x W x H: 175 x 82 x 45cm, volume 450 litres  |  |
| Tow bar:                      | Detachable type  |  |
|                               | Tow bar harness (available in 7-pin and 13-pin)  |  |

● = Standard, – = Not available.



## EQUIPMENT

| Comfort and Convenience   |   | SE Air Con | Tamura Nav Automatic | Tamura | Sport Venture |
|---|---|------------|----------------------|--------|---------------|
| Remote central door locking (with two 'jack-knife' type retractable keys) and deadlocking |   | ●          | ●                    | ●      | ●             |
| Power steering  |   | ●          | ●                    | ●      | ●             |
| Electric windows:   | Front, with one-touch auto up and down on driver's side | ●          | ●                    | ●      | ●             |
|   | Rear  | -          | -                    | -      | ●             |
| Air conditioning:   | Front, manual   | ●          | ●                    | ●      | -             |
|   | Climate-control   | -          | -                    | -      | ●             |
| Sunvisors:  | Driver's, with covered vanity mirror and ticket holder  | ●          | ●                    | ●      | ●             |

### Additional Comfort and Convenience Options

|             |   |  |
|-------------|---|--|
| Floor mats: | Carpet floor mats 'Standard'                      | Please contact your dealer for further information and availability. |
|             | Carpet floor mats 'Luxury'                        |  |
| Sunblinds:  | For side rear windows, frame type with fixing kit |  |
|             | For rear window, frame type with fixing kit       |  |

● = Standard, - = Not available.

## EQUIPMENT

| Interior Features                             |  | SE Air Con | Tamura Nav Automatic | Tamura | Sport Venture |
|---|--|------------|----------------------|--------|---------------|
| Front seats:                                  | Driver's, height-adjustable with height-adjustable head restraints                                   | ●          | ●                    | ●      | ●             |
| Rear seats:                                   | One-piece fold rear bench  | ●          | -                    | -      | -             |
|   | 60/40 split rear seats   | -          | ●                    | ●      | ●             |
|   | Three height-adjustable head restraints  | ●          | ●                    | ●      | ●             |
| Steering wheel:                               | Black, leather-wrapped with silver inserts   | -          | ●                    | ●      | -             |
|   | Black, leather-wrapped with glossy dark grey inserts   | -          | -                    | -      | ●             |
|   | Height adjustment  | ●          | ●                    | ●      | ●             |
| Gear knob:                                    | Black, plastic   | ●          | ●                    | -      | -             |
|   | Black, leather-wrapped   | -          | -                    | ●      | ●             |
| Door interior handles:                        | Front and rear, black  | ●          | -                    | -      | -             |
|   | Front and rear, silver   | -          | ●                    | ●      | ●             |
| Door switch panel:                            | Front, silver colour   | ●          | ●                    | ●      | -             |
|   | Front, glossy dark grey colour   | -          | -                    | -      | ●             |
| Air vents:                                    | Front, with silver inserts   | ●          | ●                    | ●      | -             |
|   | Front, outer with glossy dark grey inserts   | -          | -                    | -      | ●             |
| Grab handles:                                 | Front passenger  | ●          | ●                    | ●      | ●             |
| Audio systems:                                | AM/FM radio / MP3 capability / single CD player, AUX jack socket, USB connectivity and two speakers  | ●          | -                    | -      | -             |
|   | AM/FM radio / MP3 capability / single CD player, AUX jack socket, USB connectivity and four speakers | -          | ●                    | ●      | ●             |
|   | Steering wheel audio controls  | -          | ●                    | ●      | ●             |
| Satellite navigation system:                  | Integrated 6.1" Alpine system with touch screen  | -          | ●                    | -      | ●             |
| Integrated Bluetooth <sup>®</sup>             |  | -          | ●                    | -      | ●             |
| Instrument panel:                             | Trip computer with speed alarm and exterior temperature gauge  | -          | ●                    | ●      | ●             |
|   | Blackout-finish dials with orange illumination   | ●          | ●                    | ●      | ●             |
| Digital clock                                 |  | ●          | ●                    | ●      | ●             |
| Centre console, floor-mounted with cup holder |  | ●          | ●                    | ●      | ●             |
| Further storage spaces:                       | Glovebox   | ●          | ●                    | ●      | ●             |
|   | Front door pockets   | ●          | ●                    | ●      | ●             |
| Interior light, dome with integral spot light |  | ●          | ●                    | ●      | ●             |
| Luggage compartment:                          | Light  | ●          | ●                    | ●      | ●             |

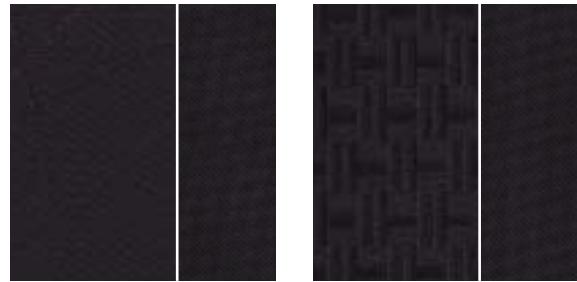
### Additional Interior Options

|  |   |  |
|--|---|--|
| Armrest:   | Black / Silver with storage compartment       | Please contact your dealer for further information and availability. |
| Foot pedals:   | Aluminium                                     |  |
| Footrest:  | Aluminium                                     |  |
| Gear knob:   | Aluminium, leather-wrapped                    |  |
| Audio system:  | AM/FM radio / MP3 compatible 6-CD autochanger |  |
| Satellite navigation   |   |  |
| Further storage spaces:                                      | Cargo storage shelf (below tonneau cover)     |  |
| Luggage compartment:   | Trunk liner                                   |  |
|  | Trunk box, black                              |  |
| Hands-free kit with voice control and Bluetooth <sup>®</sup> |   |  |

● = Standard, - = Not available. <sup>®</sup>For the latest information regarding compatibility and functionality of mobile phone / portable devices, please refer to your local Mazda dealer.



COLOURS AND SEAT TRIM



Black cloth (SE Air Con, Tamura Nav Auto, Tamura)

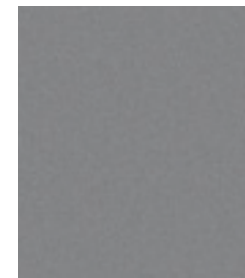
Black sports cloth (Sport Venture)

| Model                                  | SE Air Con  | Tamura Nav Automatic | Tamura      | Sport Venture      |
|--|-------------|----------------------|-------------|--------------------|
| Seat trim colour                       | Black cloth | Black cloth          | Black cloth | Black sports cloth |
| <b>Solid Body Colours</b>              |             |                      |             |                    |
| True Red (A4A)                         | ■           | ■                    | ■           | ■                  |
| <b>Mica and Metallic Body Colours*</b> |             |                      |             |                    |
| Aquatic Blue Mica (40E)                | ■           | ■                    | ■           | ■                  |
| Aluminium Silver Metallic (38P)        | ■           | ■                    | ■           | ■                  |
| Crystal White Pearlescent (34K)        | ■           | ■                    | ■           | ■                  |
| Deep Crystal Blue (42M)                | ■           | ■                    | ■           | ■                  |
| Jet Black Mica (41W)                   | ■           | ■                    | ■           | ■                  |
| Meteor Grey Mica (42A)                 | ■           | ■                    | ■           | ■                  |
| Radiant Ebony Mica (28W)               | ■           | ■                    | ■           | ■                  |
| Titanium Flash Mica (42S)              | -           | -                    | -           | ■                  |
| Zeal Red Mica (41G)                    | ■           | ■                    | ■           | -                  |

■ = Available. \*Option at extra cost. Colour availability is limited on certain models, please consult your local dealer for full availability.



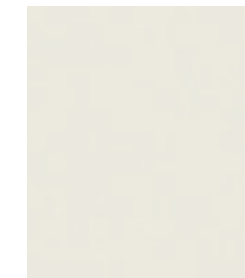
True Red



Aluminium Silver Metallic\*



Aquatic Blue Mica\*



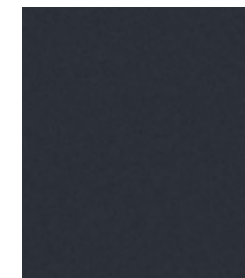
Crystal White Pearlescent\*



Deep Crystal Blue Mica\*



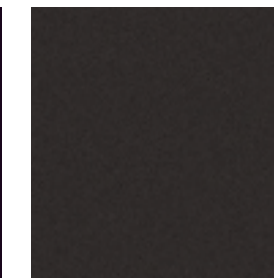
Jet Black Mica\*



Meteor Grey Mica\*



Radiant Ebony Mica\*



Titanium Flash Mica\*



Zeal Red Mica\*



\*Available at extra cost.





### **Manufacturers Warranty – 3-Year Cover**

Every Mazda is designed and built to the highest standards of performance, comfort and reliability. For your further reassurance, Mazda also provides a full 3-year / 60,000 mile warranty cover, Mazda Roadside Assistance<sup>1)</sup>, 3-year paintwork warranty and a 12-year anti-perforation warranty.

### **Free Mazda Accident Aftercare**

Mazda Accident Aftercare is designed to assist you following a road traffic accident. Should you ever be involved in an accident or need to make an insurance claim. 'Mazda First' will liaise directly with your insurer to process the claim and ensure that your vehicle is repaired at a Mazda approved bodyshop using only genuine Mazda parts, in addition to other benefits such as providing you with a free courtesy car and maintaining your Mazda warranties.

### **Mazda Contract Hire\***

Mazda Contract Hire offers low running costs with market-driven residual values, resulting in extremely competitive ownership costs for businesses and individuals. To find out more about the benefits of Mazda Contract Hire, please speak to your Mazda dealer or phone 0844 600 1410.

### **Digital Service Record**

The Mazda Digital Service Record (DSR) system provides increased security against counterfeit service documents and odometer tampering, and makes it easy to keep the service history up-to-date. Stored on a central database, the DSR replaces the traditional paper service book and ensures a secure, accurate and permanent service history for the life of the vehicle.

### **Your Mazda dealer:**

Mazda Motors UK Limited reserves the right to introduce changes in specification and equipment due to its ongoing product development. Colour and trim samples shown in this brochure may vary from the actual colours because of the limitations of the printing process. It is recommended that you consult your Mazda dealer when referring to these.

<sup>1)</sup>Please visit [www.mazda.co.uk/buying-owning/buying/roadside-assistance/](http://www.mazda.co.uk/buying-owning/buying/roadside-assistance/) for more details on your Mazda Roadside Assistance coverage.

The Bluetooth® word mark and logos are owned by the Bluetooth SIG, Inc. and any use of such marks by Mazda Motor Company is under licence. Other trademarks and trade names are those of their respective owners.

\*Mazda Contract Hire is provided by ALD Automotive Ltd, trading as Mazda Contract Hire, Oakwood Park, Lodge Causeway, Fishponds, Bristol, BS16 3JA. Guarantees / Indemnities may be required. ALD Automotive Ltd is incorporated in the UK and regulated by the Financial Services Authority in respect of general insurance products.

February 2014.

**Internet: [www.mazda.co.uk](http://www.mazda.co.uk)  
Mazda Helpline: 08457 48 48 48**

