

Mazda 5



MAZDA5

zoom-zoom
zoom-zoom
zoom-zoom

zoom-zoom

"THE HIROSHIMA SPIRIT IS TO NEVER GIVE UP, TO PURSUE EXCELLENCE. TO MAINTAIN A "CAN DO" ATTITUDE."

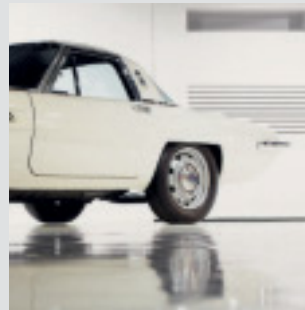


"WITH A COMPACT, LIGHT ENGINE, A LIGHT BODY AND A BEAUTIFUL DESIGN. WE AIM TO CREATE A NEW STANDARD OF CARS."



"MAZDA WILL CONTINUE TO CHALLENGE, IN ALL OUR PURSUITS. WE'LL ALWAYS DO THINGS DIFFERENTLY."

MASAHIRO MORO
EXECUTIVE OFFICER



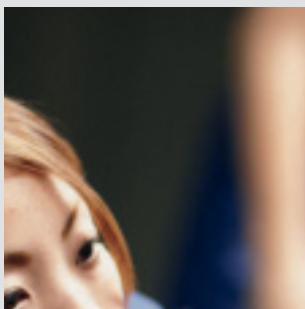
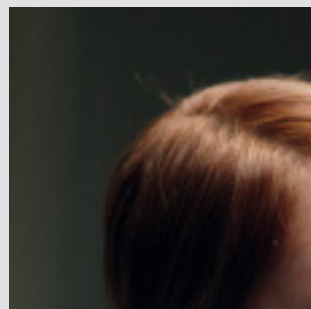
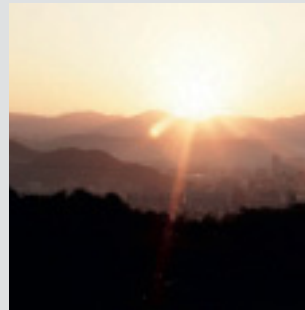
SHAPED BY THE ELEMENTS

The distinctive Mazda5 looks unlike anything else. But the elegant shape curving around that spacious, versatile, family-friendly interior is no mere styling exercise. With athletic poise, Mazda5 cuts through the air with minimal resistance, using less fuel and keeping wind noise down to barely a whisper for those inside. When this aerodynamic efficiency is combined with our advanced engine technology, it results in CO₂ emissions as low as 138g/km*. All of which proves that working with the elements can improve your driving experience, reduce your fuel bills and help protect the environment.

Designed to be different

The Mazda5 stands out in the crowd. With its distinct design language – Nagare Flow – natural wave lines suggestive of air or water flowing over the car's exterior, transform its appearance as they do so.

FOLLOW THE STORY AT MAZDA.CO.UK



"DESPITE ADVANCEMENT IN TECHNOLOGY, YOU CAN ONLY GO SO FAR WITH COMPUTERS OR OTHER SCIENTIFIC MEANS. ULTIMATELY, IT DEPENDS ON THE CARMAKER'S SKILL AND SENSITIVITY."

HIROTAKA KANAZAWA
MANAGING EXECUTIVE OFFICER

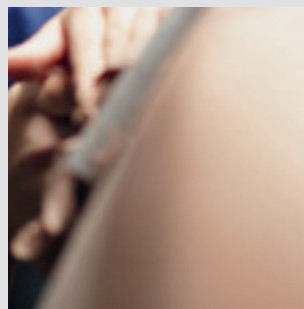
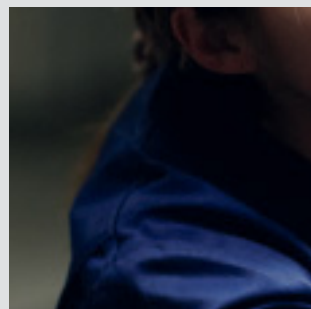


Image shows Mazda5 1.6 Sport Venture Diesel with optional Meteor Grey mica paint. *Figure quoted is for the 1.6 diesel engine.

FORMED BY FUNCTION

It is clear from the moment you slide into the driver's seat, that the Mazda5 has been designed with craftsmanship and functionality foremost in our minds. Instrumentation is positioned where it is clearly visible without having to divert your eyes from the road ahead. Leave those maps behind with the fully integrated state-of-the-art 6.1" Alpine satellite navigation system. For safety and convenience, the audio can be operated from the steering wheel mounted controls. And all essential controls and storage are comfortably within reach and easy to use, with key functionalities highlighted with premium finish, chrome accents.



EASIER BY FAR

Whether it's for an outdoor adventure with your friends or a family beach party, Mazda5 helps you get the fun started sooner. Load and offload the kids, the dog and all your stuff with the minimum of fuss thanks to the large, 700mm wide-opening sliding rear doors and generous cargo space.



- 1 Centre storage**
Within reach when you're on the move.
- 2 Second-row storage**
Extra storage and cup holders, perfect for those in the back.
- 3 Underseat storage**
Out of sight and easy to get to.





TRANSFORMED BY YOU

Wouldn't it be great if your car's interior adjusted to fit you, rather than the other way around? That's the thinking behind Mazda5's clever Karakuri seat-folding system. Karakuri is unique: it lets you choose from numerous different seating configurations. It's also easy to use, letting you transform your Mazda5 from family transport into a spacious load-carrier in seconds – and then back again equally quickly.

Innovation mode

The Karakuri seating system adapts to your differing needs and those of your passengers and cargo, combined with the sliding rear doors to make Mazda5 quick and easy to load and unload.

Above: 7-seater mode

The 2-3-2 seating configuration provides maximum passenger capacity.

1 6-seater walk-through

For easier entry and exit for third row passengers, the second-row centre seat quickly folds away.

2 5-seater mode

Increase your rear luggage space by folding down the 50/50 split third-row seats.

3 2-seater mode

All rear seats easily fold into the floor for maximum cargo room – without the need to remove them.

4 2-seater mode

Flat load area.



ENJOYED BY EVERYONE

Mazda5 incorporates responsive and dynamic handling, coupled with all the grace and virtue of a luxury vehicle. Mazda5 adapts to the needs of everyone, the throttle delivers perfect linear acceleration, whilst the rear seats not only accommodate five adults with ease, it also provides best-in-class rear leg room. The chassis manages to compensate for rapid changes in direction and absorbs imperfections in the road – which delivers a smooth comfortable ride.



Electro-Hydraulic Power Assisted Steering (EHPAS)

With EHPAS, the required steering effort is proportional to the speed you are travelling. Minimal effort is needed at low speeds, while at higher speeds the steering has less assistance, making it firmer and, therefore, very precise, while also enhancing the feeling of stability. As an additional bonus, EHPAS also reduces emissions and improves fuel efficiency.

ECONOMY BY INGENUITY

Don't you just hate spending money when you really shouldn't have to? With Mazda5's new 2.0 DISI i-stop engine unnecessary expense will be a thing of the past. When at traffic lights or stuck in a traffic jam the Mazda5's i-stop engine uses no fuel whatsoever. Using the ingenious i-stop engine, which automatically switches off when you are stationary* and instantly starts the engine the moment you step on the clutch pedal. It's that simple.

i-stop

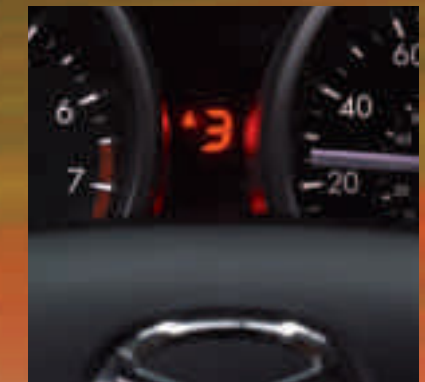
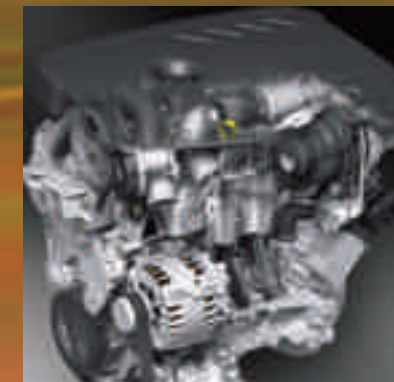
Mazda's i-stop system is unique. It uses our advanced 'combustion start method' rather than relying on the starter motor, as is the case with conventional stop-start systems. This next-generation Mazda technology makes i-stop smoother and, with a restart time of just 0.35 seconds, faster than any other comparable stop-start system.

*Before i-stop switches off the engine, the smart system confirms whether there's a good reason to keep it running. The engine will not stop if occupants' comfort or safety would be compromised.



DRIVEN BY THE ENVIRONMENT

At Mazda, we believe that the development of cleaner, greener vehicles shouldn't ever compromise driveability. So, whilst the Mazda5 certainly has a healthy aversion to the pumps and meets the latest Euro Stage V emissions standard, we've also ensured that its engines are supremely smooth, with linear responses to driver inputs. This results in a smoother, more comfortable drive which is an environmentally-friendly choice you can be proud of – and you can really enjoy on the open road.



2.0 MZR DISI i-stop

Mazda5's 2.0-litre petrol engine uses advanced DISI (Direct Injection Spark Ignition) technology that injects atomised fuel directly into the cylinder, allowing a higher than usual compression ratio. This results in a smooth and flexible delivery of power and torque – with fuel economy of up to 40.9mpg and CO₂ emissions of only 159g/km.

6-speed manual transmission

A 6-speed manual transmission is now standard on all Mazda5 models. The extra available ratio in a 6-speed contributes to reduced fuel consumption, lower emissions and increased refinement at higher speeds.

1.6 Diesel

Features a compact turbocharger and multi-point injection for better acceleration, increased torque at lower revs, better fuel economy with up to 54.3mpg and CO₂ emissions as low as 138g/km.

Shift indicator light

A shift indicator light in the fascia illuminates at the optimum revs for changing gears to encourage a smoother and more economical driving style (2.0 MZR DISI i-stop only).

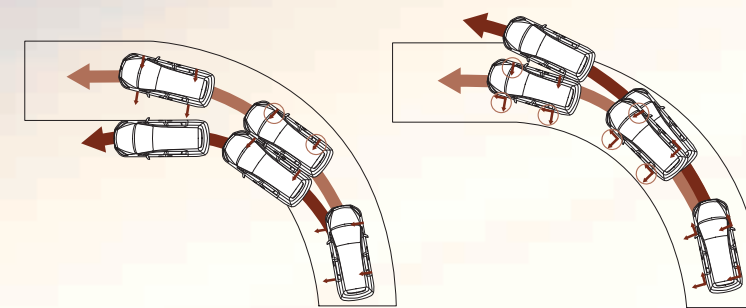
PROTECTED BY TECHNOLOGY

Prevention is better than cure. Mazda5's safety technology can help prevent an accident and minimise the consequences if one is unavoidable. For example, the Emergency Stop Signal system (ESS) warns following drivers of a sudden braking manoeuvre so they have more time to stop. The tyre pressure monitoring system warns if any of your tyres drop below optimum pressure levels. In the event of a collision, Mazda5's occupant safety cell and Supplementary Restraint System (SRS) combine to offer excellent protection for those inside, while an energy-absorbing structure in the bonnet and front bumper helps reduce the potential for pedestrian injury.



Dynamic Stability Control (DSC)

DSC enhances stability in critical driving situations regardless of the road surface the car is driven on. The system, working in conjunction with ABS, reduces engine power when necessary and carefully regulates braking pressure on the individual wheel, ensuring that the car can get round corners or obstacles without oversteering or understeering – whilst still maintaining maximum traction and stability. DSC works in conjunction with the Traction Control System (TCS) making sure the wheels do not spin on loose surfaces, by regulating the torque of the engine.



DSC effect (Oversteer control)

DSC effect (Understeer control)



Anti-lock Braking System (ABS)

ABS works with Electronic Brake-force Distribution (EBD) and Emergency Brake Assist (EBA) to optimise braking performance, helping you to maintain steering control in wet or snowy conditions.

Emergency Brake Assist (EBA)

EBA monitors how hard and how quickly you step on the brake pedal to determine when you are in an emergency braking situation. In these critical instances, EBA automatically applies the maximum braking force to every wheel to reduce stopping distances.



High-tensile steel bodyshell

In addition to providing a strong occupant safety cell, the use of high-tensile steel in the bodyshell saves weight and provides the solid base on to which we attach the chassis and steering that make Mazda5 so rewarding to drive.

Airbags

Mazda5 features dual front airbags, front-row side airbags and curtain airbags for all three rows.



ISOFIX system

The ISOFIX system provides secure anchorage points for child seats. You can quickly attach an ISOFIX seat to ISOFIX anchorages with a simple push-fitting. These anchorages and seat fittings are in a standard location, so any ISOFIX seat can be fitted to any car with the ISOFIX system.

Rear Parking Sensors and Reversing Camera
Making it easier to park in the tightest of parking spaces.

GENEROUS SPECIFICATION AS STANDARD

With one high specification available, your choice is made even simpler. Its impressive list of standard features includes sports styling, 6.1" Alpine satellite navigation, rear parking sensors and reversing camera along with a host of advanced safety features.

MAZDA 5 SPORT VENTURE

Key features:

- 17" Bright finish alloy wheels
- Leather seat trim
- Heated front seats
- Rear roof spoiler
- Side skirts
- Brilliant Black front grille
- Front fog lights
- Privacy glass
- Rear parking sensors
- Reversing camera
- Climate control air-conditioning
- Dusk-sensing lights
- Rain-sensing front wipers
- Cruise control
- Single CD player with AM/FM radio and six speakers
- USB connectivity
- Integrated Bluetooth®
- Alpine satellite navigation
- Karakuri seating system
- Dynamic Stability Control (DSC) and Traction Control System (TCS)
- Driver and front passenger airbags
- Front side airbags
- Curtain airbags (for all three rows)

FEATURES OF THE ALPINE SATELLITE NAVIGATION

- 6.1" touch screen
- Traffic Message Channel (TMC)
- 46 European Country Maps
- DVD player



MAKE IT YOURS

Choosing the Mazda5 demonstrates that you are an individual. Whether you're planning some early morning windsurfing or need to do the daily school run, the wide range of Mazda accessories is an opportunity to make your Mazda5 individual to your needs. Accessories vary from those that transform its appearance, both inside and out, to those that enhance its versatility and functionality. Please ask your dealer for further details.



Front grille in brilliant black.



Illuminated scuff plates.



Tailgate handle trim.



Rear bumper step plate.



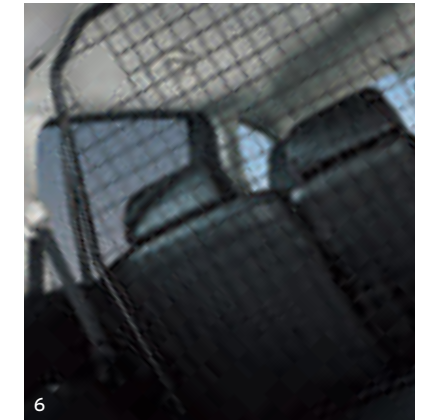
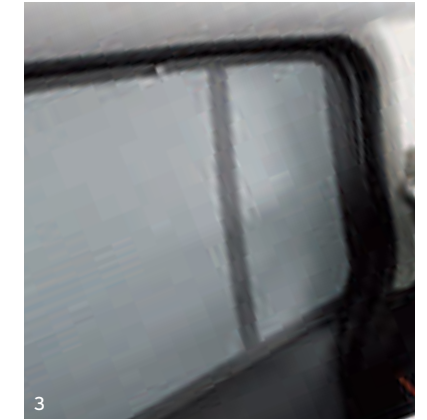
MAKE IT YOURS

Mazda5's alloy wheels complement the Nagare Flow theme beautifully. In line with our weight-minimising 'gram strategy', they also combine strength with extremely light-weight, and, as a result of our obsessive attention to every detail, they have even been shaped specifically to reduce build-up of brake dust.

- 1 16" Alloy wheel – design 56 (Accessory).
- 2 16" Alloy wheel – design 142 (Accessory).
- 3 17" Alloy wheel – design 143 (Accessory).



MAKE IT YOURS



- 1 Premium carpet mats.
- 2 Armrest.
- 3 Sunblinds (for sliding door windows).

- 4 Trunk liner.
- 5 Trunk light.
- 6 Dog guard.

- 7 Tow bar.
- 8 Roof box.
- 9 Interior bike carrier.

MAZDA FINANCIAL SERVICES

Who are we?

Mazda Financial Services is a division of Santander Consumer, the leading Consumer Finance House in Europe. We provide finance for your Mazda vehicle through your Mazda dealer at competitive rates and insurance products. We are one of the UK's leading 'point of sale' finance providers, which means we enable your Mazda dealer to provide you with a convenient "One-Stop Shop" when choosing your next Mazda. From our wide range of finance plans, there's an option that's right for you, whether you are thinking of a new or used Mazda.

What you can expect from Mazda Financial Services:

- Face-to-face service from trained, plain-talking people at your local Mazda dealer.
- Assistance in renewing your car. We'll help you choose the right finance package to enable you to renew your Mazda car as often as you would ideally like.
- Fixed Interest Rates. The interest rate on your loan is fixed for the duration of the agreement.
- Flexible terms tailored to your motoring needs. As specialists in Mazda vehicles we can tailor a finance package to both your budget and your motoring / ownership needs.

Please ask your sales executive for a tailor-made finance quote for your new car.

Mazda Financial Services Finance Plans:

Mazda Conditional Sale:

The traditional way of buying your car. Mazda Conditional Sale is flexible and simple, with a range of options to suit everyone.

The benefits

- Simple – fixed, equal, regular instalments
- Predictable – pay all your instalments and you own the car
- Flexible – you determine your repayment period at the start of your contract, meaning that you have total control of your budget

How it works

1. Choose your Mazda. Tell your dealer the deposit and repayment period you want, from 12-60 months.
2. Agree your repayments. These are based on how much is left to pay, plus interest where applicable.
3. Drive away the moment we activate your agreement.

At the end of your contract, when all instalments have been made, you then have two choices:

- **Renew:** Choose another Mazda. The car is yours; you can part exchange it for another Mazda and use the value as your deposit
- **Retain:** Keep the car. The car is yours once all instalments have been made

Mazda Personal Contract Purchase:

The finance plan that helps you to change your Mazda car at more regular intervals. Enabling shorter term finance agreements, meaning a new car more often.

The benefits

- You can fund your car over shorter periods, so you get the chance to change more often
- The flexibility at the end of the agreement to choose to renew, retain or return your Mazda
- You're protected against any fall in used car prices by an Optional Final Payment (OFP)

How it works

1. Choose any new or used Mazda. Estimate your annual mileage.
2. We estimate the minimum amount your car will be worth once your contract finishes – the OFP.
3. To work out your regular payments we add any interest charges and deduct your deposit plus the GFV from the price of your new Mazda.
4. Drive away the moment we activate your agreement.

At the end of your contract, when all instalments have been made, you then have three choices.

- **Renew:** Choose another Mazda. Use any excess value above the OFP towards a deposit for another Mazda. You can trade in your car at any time or sell it privately having settled your account
- **Retain:** Keep the car. Simply pay the OFP, and the car is yours
- **Return your car:** There's nothing more to pay if the car's in good condition and within the agreed mileage

OUR COMMITMENT TO THE ENVIRONMENT

Mazda makes cars that excite, look stylish and appealing, are fun to drive and make you want to get behind the wheel again and again. But we are equally committed to the environment, to the creation of a sustainable future for all. This means limiting the Earth's resources that we use and always considering the environmental impact in everything we do.

Our sustainability programme is dedicated to the development of clean technologies. This covers every aspect of a vehicle's impact on the environment – from planning and development, through to manufacturing, use and eventual recycling / disposal. Below are just three examples of how our environmental policies have led to significant advances in 'green' technology.

Plant-derived plastics

Our interior car plastics use carbon-neutral* plant-derived biomass – an industry first.

- Reduces reliance on fossil fuels
- Cuts CO₂ emissions
- Uses sustainable raw materials
- Requires 30% less energy to produce than petroleum based plastics
- Is three times stronger than conventional bioplastics
- Has 25% higher heat resistance than conventional bioplastics
- Produces lighter, stronger parts improving fuel economy

*CO₂ released when the bioplastic decomposes or is burned is comparable to the amount absorbed by growing plants, having a negligible impact on total atmospheric CO₂ levels.

Semi-dry machining process

Conventional machining of cast metal parts uses huge amounts of water-based coolant to cool and lubricate cutting tools, and remove and collect waste metal. With Mazda's semi-dry machining process, we have substituted large volumes of coolant for tiny quantities of atomised biodegradable oil in a jet of air.

Benefits:

- 84% reduction in the amount of coolant required
- Reduced electricity consumption by 40% on machining lines
- 80% cut in waste liquids

Recycling

Mazda has made a substantial commitment to recycling.

- We have reduced waste material in our production facilities by 55% since 1990
- In 1992 we became the first car manufacturer to recycle bumpers
- Over 75% of our plastic parts can be recycled
- All of our gaskets and brake-pads are asbestos-free
- There are no ozone-damaging CFCs in our polyurethane products (such as the foam padding in seats, armrests and steering wheels)
- Many of our plants have passed the stringent ISO 14001 test – commonly known as the environmental ISO

MECHANICAL FEATURES

Engines:

- 2.0 MZR Petrol
- 1999cc in-line 4-cylinder, 16-valve, DOHC, front-mounted, developing 150ps (110kW) at 6200rpm and 191Nm at 4500rpm
 - CO₂ emissions of 159g/km (EC Stage V)
 - Battery – 46B24L plus 26B17L
 - Alternator – 12V-110A
 - DISI (Direct Injection Spark Ignition)
 - i-stop
 - Variable Valve Timing (VVT)
 - Variable Induction System
- 1.6 Diesel
- 1560cc in-line 4-cylinder, 8-valve, SOHC, front-mounted, developing 115ps (85kW) at 3600rpm and 270Nm at 1750rpm
 - CO₂ emissions of 138g/km (EC Stage V)
 - Battery – 75D23L
 - Alternator – 12V-150A
 - Common-rail fuel injection
 - Diesel Particulate Filter (DPF)

Transmission:

- 6-speed manual – Giving precise, positive shift feel to provide a feeling of unity between driver and vehicle

Body:

- Self-supporting rigid and torsion-resistant all-steel body with defined crush zones for the front and rear sections, stable passenger safety cell with side impact reinforcement in the doors
- Mazda Advanced Impact Distribution and Absorption System (MAIDAS) designed to secure the critical interior space in the event of an accident
- Supplementary Restraint System (SRS) comprising central control unit and crash sensors, seatbelt pre-tensioners, load-limiters and airbag system

Chassis and Suspension:

- Front: Independent suspension with MacPherson struts and coil springs
- Rear: E-type multi-link suspension, independent, with angled dampers and low-mounted springs to maximise space for third-row seats and / or load compartment

Brake System:

- Hydraulic, diagonally divided dual-circuit system with power brake unit
- Anti-lock Braking System (ABS) with Electronic Brake-force Distribution (EBD) and Emergency Brake Assist (EBA)
- Front: 300mm ventilated disc brakes
- Rear: 302mm disc brakes

MODEL AVAILABILITY AND TECHNICAL DATA

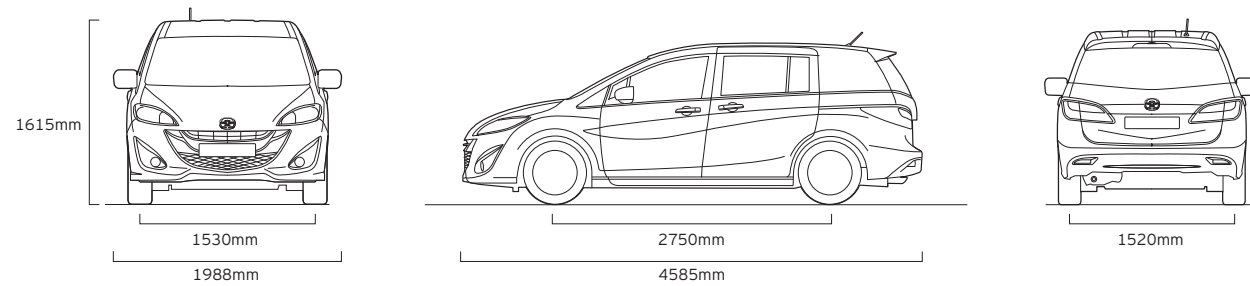
Engine Type	2.0 MZR	1.6 Diesel
Displacement (cc)	1999	1560
Bore x stroke (mm)	87.5 x 83.1	75.0 x 88.3
Valves per cylinder	4	2
Maximum output [ps (kW) / rpm]	150 (110) / 6200	115 (85) / 3600
Maximum torque (Nm / rpm)	191 / 4500	270 / 1750
Compression ratio	11.5	16.0
Transmission		
Type	6-speed manual	6-speed manual
Gear ratios:		
1st	3.454	3.727
2nd	1.736	2.048
3rd	1.161	1.258
4th	0.914	0.919
5th	0.795	0.738
6th	0.645	0.622
Reverse	3.198	3.818
Final gear ratio	4.105	3.824
Steering		
Steering gear	Electric power rack and pinion steering, engine speed sensing	
Minimum turning circle (wall-to-wall) (m)	11.2	11.2
Performance and Economy		
Acceleration [0-62mph in sec]	11.0	13.7
Top speed (mph)	120	111
Fuel consumption ¹⁾ [mpg (l/100km)]:		
Urban	31.4 (9.0)	44.1 (6.4)
Extra Urban	49.6 (5.7)	61.4 (4.6)
Combined	40.9 (6.9)	54.3 (5.2)
CO ₂ emissions ¹⁾ (g/km)	159	138
EC emission level	EC Stage V	EC Stage V
Recommended fuel	Unleaded 95 RON	Diesel
Fuel tank capacity (litres)	60	60

¹⁾Fuel consumption and CO₂ emissions figures are obtained under standardised test conditions defined in European Legislation using a representative model. This allows direct comparison between different models from different manufacturers, but may not represent the actual fuel consumption achieved in 'real world' driving conditions. More information is available at <http://carfueldata.direct.gov.uk>

TECHNICAL DATA

Dimensions and Weights		2.0 MZR	1.6 Diesel
Overall length / width / height (mm)		--- 4585 / 1988 / 1615 ---	
Ground clearance (mm) between the axles – unladen		130	130
Front track / Rear track (mm)		1530 / 1520	1530 / 1520
Wheelbase (mm)		2750	2750
Front headroom / leg room / shoulder room (mm)		-- 1034 / 1035 / 1409 --	
Second row headroom / leg room / shoulder room (mm)		--- 1000 / 1001 / 1410 ---	
Third row headroom / leg room / shoulder room (mm)		--- 942 / 775 / 1251 ---	
Cargo volume, acc. to VDA (l):	7-seat mode (all seats in use)	112	112
	5-seat mode	426	426
	2-seat mode (to belt line)	857	857
Ventilated front disc diameter (mm)		300	300
Rear disc diameter (mm)		302	302
Kerb weight (kg) incl. driver (75kg) (min)		1485	1490
Permitted gross vehicle weight (kg):	Total	2125	2125
	Front / rear	980 / 1145	975 / 1150
Permitted axle load, front / rear (kg)		1020 / 1200	1020 / 1205
Towing limit (kg)*:	Unbraked	600	600
	Braked	1200	1200
Maximum roof load (kg)		75	75

*Towing capacity is based on a 12% gradient and tested in accordance with 92/21/EEC as amended by 95/48/EC.



EQUIPMENT

Safety and Security	Sport Venture
Mazda Advanced Impact Distribution and Absorption System (MAIDAS) engineered 'triple H' body structure to help protect occupants from impact forces	●
Supplementary Restraint System (SRS) – Central control unit and crash sensors, front seatbelt pre-tensioners, load-limiters and airbag system	●
Four-Wheel Anti-lock Braking System (4W-ABS) with Electronic Brake-force Distribution (EBD) and Emergency Brake Assist (EBA)	●
Dynamic Stability Control (DSC) with Traction Control System (TCS)	●
Emergency Stop Signal system (ESS): Automatic activation of flashing hazard lights when emergency braking is applied	●
Driver and front passenger airbags	●
Front side airbags	●
Curtain airbags for all three rows	●
Seatbelts: Front, 3-point (ELR) x 2 with pre-tensioners	●
Rear, second row, 3-point (ELR) x 3	●
Rear, third row, 3-point (ELR) x 2	●
Seatbelt reminder (driver and front passenger)	●
ISOFIX child seat anchorages; attached to outer 2 seats (second row)	●
Thatcham Category 1 alarm and immobiliser system	●
Tyre Pressure Monitoring System (TPMS)	●
Additional Safety and Security Options	
Britax Römer Duo Plus (ISOFIX) child seat (full range available)	Please contact your dealer for further information and availability.
Passenger airbag cut-off switch	

Exterior

Tyres and wheels:	205/50 R17 with 7.0JJ 17" Bright Alloy wheels	●
Tyre repair kit		●
Bumpers, front and rear:	Body-coloured	●
Front grille:	Brilliant Black	●
Rear spoiler:	Body-coloured	●
Side skirts		●
Sliding rear doors		●
Chrome exhaust trim		●
Door handles:	Chrome	●
Privacy glass for rear windows		●
Wipers:	Rain-sensing front wipers	●
Headlights:	Halogen	●
	Dusk-sensing lights	●
Front fog lights		●
Rear brake light, high-mounted		●
Rear fog light		●
Parking distance sensors:	Rear	●
Reversing camera		●
Door mirrors:	Power folding, heated, Bright Silver covers with integrated indicator lights	●

● = Standard

EQUIPMENT

Additional Exterior Options

		Sport Venture
Tyres and wheels:	See page 23 for wheel options	
Lowering suspension by Eibach (not available with tow bar)		
Bumpers:	Rear bumper step plate	
	Rear bumper step protector	
Tailgate handle trim:	Chrome finish	
Carbon front grille		
Mudflaps:	Front, black	Please contact your dealer for further information and availability.
	Rear, black	
Parking distance sensors:	Front	
Roof carrier system:	Attachment for skis / snowboards	
	Attachment for bicycles	
	Attachment for surfboard	
	Roof box	
Tow bar:	Detachable (not available with Eibach lowering suspension)	
	Fixed (not available with Eibach lowering suspension)	

Comfort and Convenience

Electric windows:	Front, with one-touch auto down and up on driver's side	●
	Front and rear, with timer function	●
Remote central door locking:	With illuminated entry	●
Power steering		●
Cruise control		●
Air-conditioning:	Climate control	●
Sunvisors:	Driver's and passenger's with covered vanity mirror	●

Additional Comfort and Convenience Options

Front and rear floor mats:	Carpet floor mat, 'standard', black with 'Mazda5' logo	Please contact your dealer for further information and availability.
	Carpet floor mat, 'luxury', black, with 'Mazda5' logo	

● = Standard.

EQUIPMENT

Interior Features

		Sport Venture
Seats and integral head restraints:	Driver's, dial reclining and height adjustment	●
	Driver's, lumbar adjustment	●
	Picnic tables (back of front seats)	●
	Leather trim*	●
	Heated front seats	●
Front seats:	Driver's and passenger's armrests	●
Rear seats:	Second row sliding seats with foldable Karakuri centre seat which converts the two individual second row seats into a 3-person centre seat	●
	Second row seat recliner adjustment and double-fold mechanism	●
	Third row 50/50 split fold	●
	Second row armrest	●
Steering wheel:	Leather-wrapped	●
	Tilt and height adjustment	●
Gear knob:	Leather-wrapped	●
Door inner handles:	Front, brushed aluminium finish	●
Scuff plates:	Front and rear standard scuff plates	●
Grab handles:	Front passenger's and two rear with coat hooks	●
Audio systems:	AM/FM radio / MP3 compatibility / CD player, USB port ²⁾ and six speakers	●
	Steering wheel audio controls	●
	Auxiliary (AUX) input jack	●
Satellite navigation system:	Integrated 6.1" Alpine system with touch screen	●
Integrated Bluetooth ^{®1)}		●
Meter set:	Exterior temperature gauge	●
	Trip computer	●
	Black-finish dials with white illumination	●
	Shift indicator light (i-stop only)	●
Digital clock		●
Overhead console with sunglasses holder		●
Auto-dimming rear-view mirror		●
Meter set light control with dimmer		●
Headlights on reminder (sound warning)		●
Front centre console with storage box; two cup holders		●
Further storage spaces:	Karakuri box to fold out from under second row seat and to be stored in centre of second seating row, with two cup holders and undertray net	●
	Glovebox	●
	Seatback pocket (passenger side)	●
	Door pockets (front and rear doors)	●
Interior light, dome with integral spotlight		●
Luggage compartment:	Light	●
	Boot storage box	●
	Tonneau cover	●

Additional Interior Options

Foot pedals:	Aluminium	Please contact your dealer for further information and availability.
Cool and warm box		
Sunblinds:	For sliding doors	
Scuff plates:	Front, with illuminated Mazda5 logo	
Audio:	iPod USB adapter	
Cigar lighter		
Ashtray		
Welcome mode lighting:	Blue LED for driver and passenger footwell	
Luggage compartment:	LED lights	
	Anti-slip mat with rear bumper protector	
	Boot liner	
	Dog guard	
	Internal bike carrier for up to two bikes	

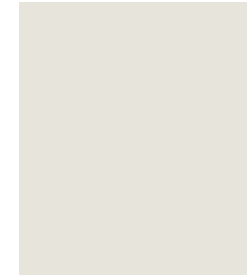
● = Standard. *Leather refers to centre seat facing and side supports, and rear centre console armrest lid. ¹⁾For the latest information regarding compatibility and functionality of mobile phone / portable devices, please refer to your local Mazda dealer. ²⁾To enable iPod playback an accessory iPod adapter is required at extra cost.



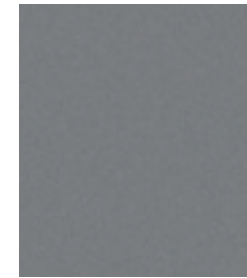
Black leather

Model	Sport Venture	
Trim	Black Leather	
Solid Body Colour		
Arctic White (A7G)	■	
Mica and Metallic Body Colours*		
Aluminium Silver Metallic (42R)	■	
Crystal White Pearlescent (42K)	■	
Deep Crystal Blue Mica (42M)	■	
Jet Black Mica (41W)	■	
Meteor Grey Mica (43A)	■	
Titanium Flash Mica (42S)	■	

■ = Available. *Option available at extra cost.



Arctic White



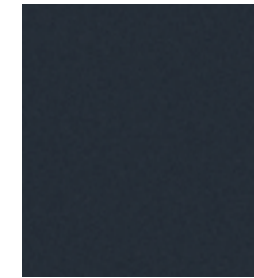
Aluminium Silver Metallic*



Crystal White Pearlescent*



Jet Black Mica*



Meteor Grey Mica*



Deep Crystal Blue Mica*



Titanium Flash Mica*





Manufacturer's Warranty – 3-Year Cover

Every Mazda is designed and built to the highest standards of performance, comfort and reliability. For your further reassurance, Mazda also provides a full 3-year / 60,000 mile warranty cover, Mazda Roadside Assistance¹⁾, 3-year paintwork warranty and a 12-year anti-perforation warranty.

Free Mazda Accident Aftercare

Mazda Accident Aftercare is designed to assist you following a road traffic accident. Should you ever be involved in an accident or need to make an insurance claim. 'Mazda First' will liaise directly with your insurer to process the claim and ensure that your vehicle is repaired at a Mazda approved bodyshop using only genuine Mazda parts, in addition to other benefits such as providing you with a free courtesy car and maintaining your Mazda warranties.

Mazda Contract Hire*

Mazda Contract Hire offers low running costs with market-driven residual values, resulting in extremely competitive ownership costs for businesses and individuals. To find out more about the benefits of Mazda Contract Hire, please speak to your Mazda dealer or phone 0844 600 1410.

Digital Service Record

The Mazda Digital Service Record (DSR) system provides increased security against counterfeit service documents and odometer tampering, and makes it easy to keep the service history up-to-date. Stored on a central database, the DSR replaces the traditional paper service book and ensures a secure, accurate and permanent service history for the life of the vehicle.

Your Mazda dealer:

Mazda Motors UK Limited reserves the right to introduce changes in specification and equipment due to its ongoing product development. Colour and trim samples shown in this brochure may vary from the actual colours because of the limitations of the printing process. It is recommended that you consult your Mazda dealer when referring to these.

¹⁾Please visit www.mazda.co.uk for more details on your Mazda Roadside Assistance coverage.

The Bluetooth® word mark and logos are owned by the Bluetooth SIG, Inc. and any use of such marks by Mazda Motor Company is under licence. Other trademarks and trade names are those of their respective owners.

*Mazda Contract Hire is provided by ALD Automotive Ltd, trading as Mazda Contract Hire, Oakwood Park, Lodge Causeway, Fishponds, Bristol, BS16 3JA. Guarantees / Indemnities may be required. ALD Automotive Ltd is incorporated in the UK and regulated by the Financial Services Authority in respect of general insurance products.

February 2014.

Internet: www.mazda.co.uk
Mazda Helpline: 08457 48 48 48

