



Innovation
that excites

NISSAN LEAF

Zero Emission



[Contents](#) | [Exterior design](#) | [Interior design](#) | [Technology & Performance](#) | [Style & Accessories](#) | [Technical Specifications](#) | [Price List](#)

[Print](#) | [Close](#)

[REQUEST A TEST DRIVE](#)





CITIZENS OF THE ROAD, UNITE. Be a part of the electric revolution: join over 65,000 100% electric Nissan LEAF owners already making the most of zero emissions driving across the globe in the world's best selling Electric Vehicle. Now built in Britain, we present the New 100% electric Nissan LEAF - the best just got better.

LOOK & FEEL

EXTERIOR DESIGN	04
INTERIOR DESIGN	10

TECHNOLOGY & PERFORMANCE

DASHBOARD TECHNOLOGY	12
NISSAN CARWINGS	14
CHARGING LEAF	16
SAFETY	18

STYLE & ACCESSORIES

ACCESSORIES	20
COLOURS/TRIMS	22
ALL ABOUT NISSAN	24

**HOW SMART IS THE NEW
NISSAN LEAF? DISCOVER
FOR YOURSELF.**

Discover the smart fluidity of the
New Nissan LEAF. Charge it at
home or on the go, control it with
your smart phone and delight
in the uncompromising comfort,
outstanding technology and
unexpected power of a genuine
game-changer. The future just
got real.



[REQUEST A TEST DRIVE](#)





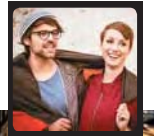
www.nissan-leaf.co.uk

6
EXTERIOR DESIGN

"I bought my LEAF as a second car. I now drive it 95% OF THE TIME."



"I love the LEAF because it's the cheapest car to run of ANY car I've EVER owned."



"Carwings is very cool. I warm up my LEAF every morning without even leaving the house!"



SPREAD THE WORD

IT'S SURPRISING what you can achieve in a car that's so clean it doesn't even have an exhaust pipe.

7
LOOK & FEEL

REQUEST A TEST DRIVE



DRIVE FOR CHANGE

IT MAY LOOK FAMILIAR, but it's revolutionary inside. Packed with innovation, New LEAF delivers a range of 124 miles (NEDC cycle). An all-electric, hi-tech eco-warrior right down to the tip of its aerodynamic nose, the New 100% electric Nissan LEAF is the purist's choice.

"I have no reason to know what the price of a litre of petrol is anymore."



"I knew the LEAF would be energy efficient; I didn't expect it to be so much fun to drive."

"The car is saving me loads of money on petrol and maintenance, and electricity costs are minimal."



www.nissan-leaf.co.uk

8
EXTERIOR DESIGN

9
EXTERIOR DESIGN

10
LOOK & FEEL

[Contents](#) | [Exterior design](#) | [Interior design](#) | [Technology & Performance](#) | [Style & Accessories](#) | [Technical Specifications](#) | [Price List](#)

[Page 1](#) | [Page 2](#) | [Page 3](#)

[Print](#) | [Close](#)

[REQUEST A TEST DRIVE](#)





CHECK IN

The New Nissan LEAF's 370L boot space is among the top in its category. Even with the BOSE® Sound System on the top of the range LEAF Tekna, you still have an impressive boot capacity of 355L.

LOAD UP

If you need more space, the rear seats are fully folding.



**ATTRACT
THE CROWD**

A FULL 5-SEATER offering adjustable height in the front and increased leg-room in the back, New Nissan LEAF is a real crowd-pleaser. New LEAF also offers you the option of heated seats and steering wheel, keeping you warm in an energy efficient way. Choose from a full leather trim or a planet-loving bio-fabric made from sugar cane.

REQUEST A TEST DRIVE



COOL TECH TOOLS

YOUR DIGITAL DASHBOARD. Login to New Nissan LEAF's control panel, dominated by beautiful blue-lit dials and a clear digital dash display. The elegant centre console with a 7" LCD screen completes the look of the future.



EV ANALYTICS

The combimeter helps to maximise your range by instantly displaying energy consumption and regeneration, state of charge, remaining energy, capacity levels and distance-to-empty in an easy to read format.

B-MODE DRIVING

Flick the mouse into B-mode and the hi-tech regenerative braking system will increase the energy recycled back into the power supply when you brake or decelerate.

360° VISION

Enjoy a crystal-clear view with the 360° Around View Monitor. Four wide-angled cameras offer a front, rear and/or side view as well as a bird's eye view for the ultimate ease of parking.

ECO-SOUNDS

Ultra-compact and custom-designed for the New Nissan LEAF, the new BOSE® Energy-Efficient Series system delivers a powerful sound, whilst almost halving the usual amount of electricity needed. Maximise the benefit of Nissan LEAF's exceptionally quiet cabin by transforming it into a real auditorium.





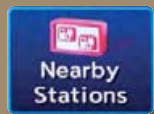
IN SYNC NISSAN CARWINGS

IT SUPPORT. Connect New Nissan LEAF to your PC or smartphone with Carwings Intelligent Navigation System: activate charging, preset the air con or plan your eco-route at a distance - and compare your eco-driving skills with a global community of LEAF owners too! Carwings will help you to maximise your energy and get the most out of LEAF's range.



Driving Range

DRIVING RANGE
Check you have enough range for your next journey without needing to top up.



Nearby Stations

NEARBY STATIONS
Find the nearest charging station while you're on the road.



Energy Information

ENERGY INFORMATION
Keep an eye on your energy consumption at all times.



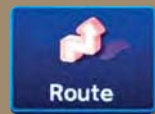
Update Stations

UPDATE STATIONS
Instantly update Carwings with newly installed charging points.



Charging Timer

CHARGING TIMER
Set the charging time start in your car, on your smartphone or PC. You can preset the air con or heating too.



Route

ECO-ROUTING
Eco-routing will help you to maximise your range by planning the most energy efficient route.



PC PLANNING

Plan your trip on your PC or smartphone and send it to your Nissan LEAF.



CHARGING STATIONS
Receive details of all the nearest charging stations while you're driving.



REACHABLE AREAS

One click on the steering wheel will reassure you can reach your destination.



REMOTE CHARGING
Activate charging from your PC or smartphone. Also check the battery charge level and reachable range. Nothing could be easier.



REMOTE AIR CON

Activate the air con from your PC or smartphone for a warm or chilled welcome.



ECO-DRIVING CHAMPION

Join a global community of eco-drivers and grow your own virtual forest.



TAKE CHARGE NOW'S THE TIME

CHOOSE YOUR CHARGE. Stop for a quick charge en route, fill up at home or plug in at work.



1. RAPID CHARGER

30 MINS. Go from 0-80% in approximately half an hour; rapid charging is the fastest battery boost available, making life easier and longer trips possible. The national network of rapid chargers is expanding all the time, for example at Nissan dealers and motorway service stations.



2. HOME CHARGING UNIT

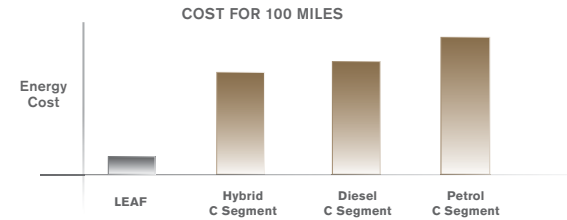
4-8 HOURS. Charge your Nissan LEAF overnight using a Home Charging Unit and reach full charge in approximately 8 hours, or even 4 hours with the optional 6.6kW on-board charger. Be sure to have your Home Charging Unit installed by an approved electrician.



3. CABLE + DOMESTIC PLUG

12 HOURS. Use your Nissan EVSE cable to charge your LEAF where you like – at public charging stations, at work or at home (so long as the domestic socket is on a professionally installed dedicated circuit). Providing 10A power, it will charge from empty to full in approximately 12 hours.

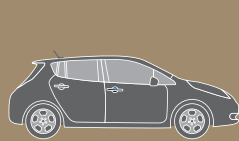
LEAF offers an extremely competitive cost of ownership package.



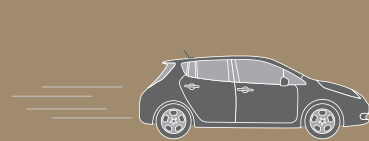
www.nissan-leaf.co.uk



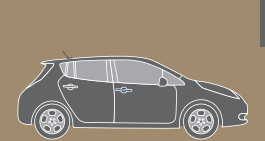
Wake up to a full 'tank'. All charged up and remotely pre-heated or cooled, LEAF is ready for action.



Whoosh! Nissan LEAF has no gears and has 100% available torque straightaway for a smooth, responsive and near-silent getaway.



Enjoy zero emissions driving for less with zero VED, zero Benefit-In-Kind until 2015 and zero London Congestion Charge.



Thanks to its regenerative brakes, Nissan LEAF charges everytime you slow down. Red lights are your new best friend.



Take that important call with Bluetooth*, then run those errands.



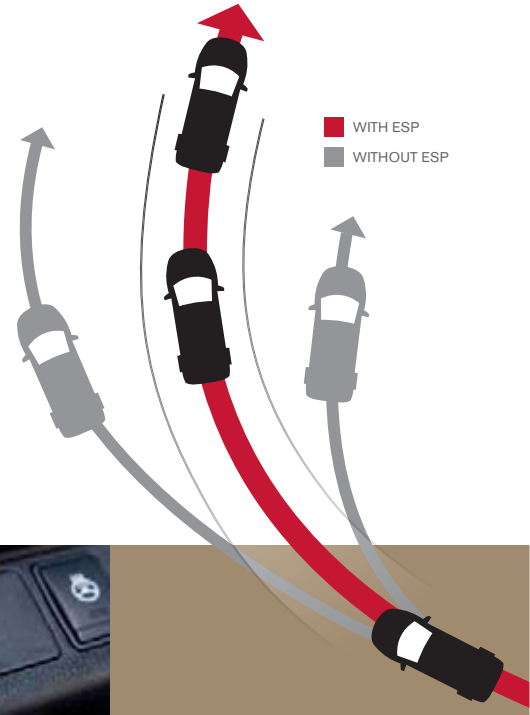
Just another day of zero emissions driving with LEAF. No petrol, no emissions. Back home, time to charge up during off-peak hours while sleeping.



AIRBAGS. Nissan's Advanced Airbag System includes dual-stage front airbags with seat belt sensors, front seat-mounted side impact airbags and roof-mounted curtain side impact airbags for front and rear seats.

ARRIVE SAFELY

A PROTECTED ENVIRONMENT. Unsurprisingly, New Nissan LEAF is equipped with all the latest safety and security equipment.



AVM. The 360° Around View Monitor helps you park safely and easily. Thanks to 4 wide-angled cameras, you can view your surroundings from a variety of angles including front & side, back & side and from above.



LED LIGHTS. The xenon-like performance of Nissan LEAF's LED lights are designed to brighten up your darkest moments while using half the energy of halogens.



ESP. The Electronic Stability Program keeps you in control. It senses the car's handling limits and, if needs be, reduces engine power or applies the brakes to avoid wheel spin.

[REQUEST A TEST DRIVE](#)





ADD A PERSONAL TOUCH

NISSAN GENUINE ACCESSORIES. From chrome accents to illuminations, clever organisers to wow-factor wheels - customise your LEAF to suit you.

- 1) Wind deflectors
- 2) Chrome mirror caps
- 3) Chrome door sill strips
- 4) 17" alloy wheels
- 5) Chrome foglamp rings
- 6-8) Floor mats, front & rear



9) Illuminated entry guard
10) Charging port lid cover

11) Cargo organiser
12) Centre console insert

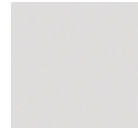
13) 16" accessory alloy wheel
14) Soft trunkliner - compatible for LEAF with and without BOSE® Sound System.

COLOURS

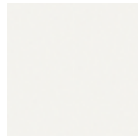
COLOUR YOUR ENERGY



Pearl Black - Z11



Universal Silver metallic - KY0



Arctic White solid - 326



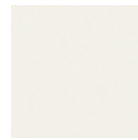
Gun Metal metallic - KAD



Magnetic Red metallic - NAJ



Mineral Blue metallic - RBJ



Pearl White - QAB

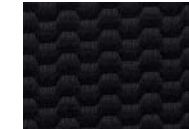
www.nissan-leaf.co.uk

TRIMS

TAILOR YOUR TRIMS



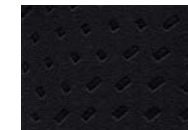
BLACK
woven type fabric*
Visia



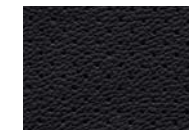
LIGHT GREY
suede effect fabric*
Acenta



BLACK
suede effect fabric*
Acenta

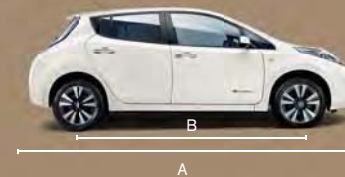


BLACK
leather**
Tekna



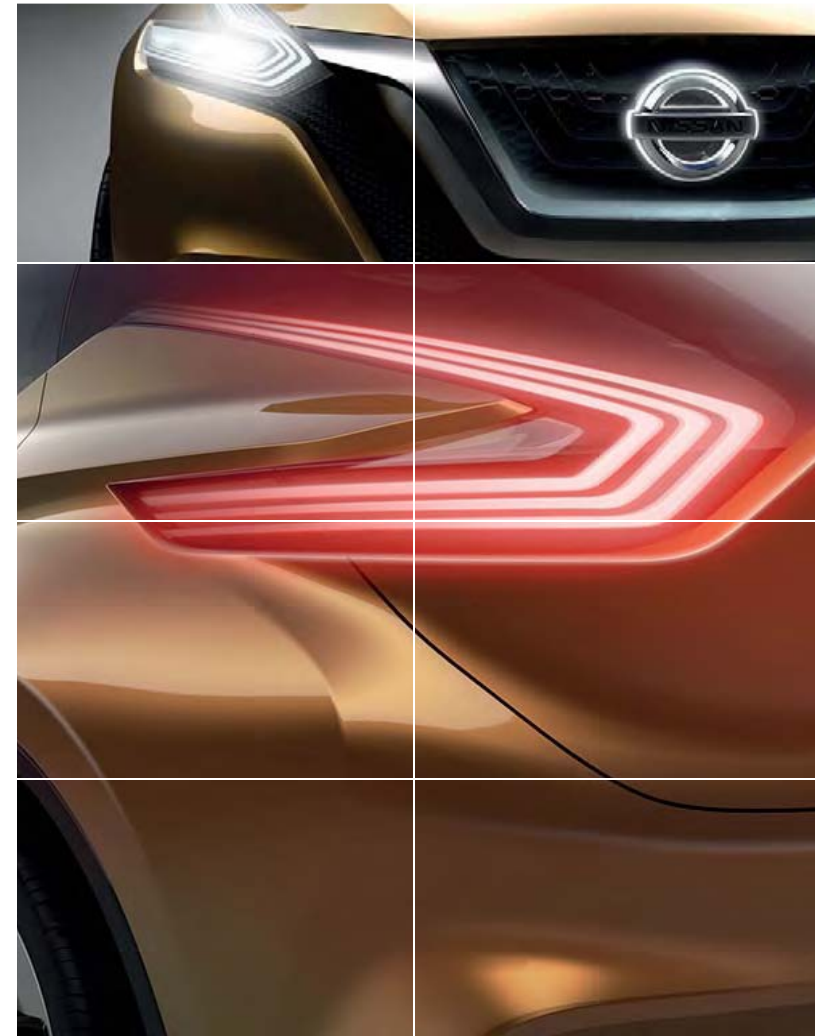
*Bio Fabric
** Some parts of leather seats may contain artificial leather

DIMENSIONS



A: Overall length: 4445mm
B: Wheelbase: 2700mm
C: Overall width: 1770mm
D: Overall height: 1550mm





AT NISSAN, YOU BRING OUT THE BEST IN US.

You spark our imagination. You provoke our creativity. You inspire us to change the rules and innovate. And at Nissan, innovation is not just about additions and extensions, it's about crossing the line to reinvent the status quo. It's about developing unexpected solutions to satisfy your wildest and most pragmatic desires. At Nissan, we design cars, accessories and services that break the mould - making the practical exciting and the exciting practical, to offer you a more exhilarating driving experience everyday.



NISSAN LEAF OFFERS YOU:

5-YEAR / 60,000 MILES WARRANTY ON ALL EV DEDICATED COMPONENTS AND 3-YEAR / 60,000 MILES FOR STANDARD COMPONENTS

12-YEAR ANTI-CORROSION WARRANTY
18,000 MILES / 12 MONTHS SERVICE INTERVALS

Nissan LEAF lithium-ion battery state of health warranty protects against battery capacity loss (less than 9 bars out of 12) as shown on the LEAF's capacity gauge for a period of 5 years / 60,000 miles.



Zero Emission

visit our website at: www.nissan-leaf.co.uk

Follow Nissan LEAF on:



NISSAN MOTOR GB LIMITED, The Rivers Office Park, Denham Way, Maple Cross, Hertfordshire, WD3 9YS

Every effort has been made to ensure that the content of this publication is correct at the time of going to press (July 2013). This brochure has been produced featuring prototype vehicles exhibited at motor shows. In accordance with the company's policy of continuously improving its products, Nissan Europe reserves the right to change at any time the specification and the vehicles described and shown in this publication. Nissan dealers will be informed of any such modifications as quickly as possible. Please check with your local Nissan dealer to receive the most up-to-date information. Because of the limitations of the printing processes used, the colours shown in this brochure may differ slightly from the actual colours of the paint and interior trim materials used. All rights reserved. Reproduction in whole or part of this brochure without the written permission of Nissan Europe is forbidden.

This brochure is made from chlorine free paper – NISSAN LEAF Brochure – 07/2013 – Printed in EU. Part N° 99999-54110
Created by NEW BBDO, France – Tel: +33 1 40 62 37 37 and produced by E-GRAPHICS\FRANCE, France – Tel: +33 1 49 09 25 35.

Dealer stamp:



Innovation
that excites

NISSAN LEAF



[Contents](#) | [Exterior design](#) | [Interior design](#) | [Technology & Performance](#) | [Style & Accessories](#) | [Technical Specifications](#) | [Price List](#)

[Print](#) | [Close](#)

[REQUEST A TEST DRIVE](#)



BE A PART OF THE ELECTRIC REVOLUTION

Over 145,000 owners of the Nissan LEAF are now making the most of zero emission driving across the globe.

Launched in 2011 and now built in Britain, the 100% Electric Nissan LEAF is the world's best selling Electric Vehicle. Are you ready to go Electric?



GRADES

VISIA

5 DOOR
80 KW AC ELECTRIC MOTOR
SINGLE GEAR AUTO

AUDIO AND TECHNOLOGY

- Audio centre with 1CD, Bluetooth, iPod, USB
- 4 speakers
- Steering wheel mounted controls
- Regenerative braking system

COMFORT AND CONVENIENCE

- Start / stop power button
- Remote charging port opener
- Electric mirror adjustment
- Charging port illumination
- Rear wiper
- Front & rear power windows
- Eco drive mode
- Hill start assist
- Auto air conditioning (dial type)
- EVSE cable - 3 Pin, 10 Amp

EXTERIOR

- Intelligent key
- Halogen headlamps
- Fog lamps
- Thatcham alarm
- Rapid Charge Port (allowing 50kW DC charging)

SAFETY

- ABS & EBD
- 6 airbags: front, side & curtain
- Vehicle Dynamic Control (VDC) and Traction Control System (TCS)
- 2 front 3 point seat belts with height adjusted, double pretensioner, load limiter and reminder
- 3 rear 3 point seat belts, ISOFIX x2
- Immobiliser
- EVSE charging cable locking
- Instant Mobility System (IMS)
- Vehicle Sound for Pedestrians (VSP)
- Daytime running lights
- Tyre Pressure Monitoring System
- Safety Kit (Warning Triangle, First Aid Kit and 2 High Visibility Jackets)

STYLING

- Black woven fabric trim
- Chromed door handles
- Black coloured wing mirrors
- 16" steel wheels with wheel trims

OPTIONS AT EXTRA COST

- Metallic paint
- Pearlescent paint
- Arctic White solid paint
- 6.6kW on-board charger* (includes the 7 pin mode 3 type 3 cable AND the 3 pin EVSE cable)
- NissanConnect with reversing camera

VISIA+

5 DOOR
80 KW AC ELECTRIC MOTOR
SINGLE GEAR AUTO

ADDITIONAL TO VISIA GRADE

AUDIO AND TECHNOLOGY

- NissanConnect with reversing camera

EXTERIOR

- Privacy glass
- 16" alloy wheels
- Body coloured and electric folding wing mirrors

OPTIONS

- Metallic paint
- Pearlescent paint
- Arctic White solid paint
- 6.6kW on-board charger* (includes the 7 pin mode 3 type 3 cable AND the 3 pin EVSE cable)

*Allows home and public charging at 32 Amp

ACENTA

5 DOOR
80 KW AC ELECTRIC MOTOR
SINGLE GEAR AUTO

ADDITIONAL TO VISIA+ GRADE

AUDIO AND TECHNOLOGY

- Nissan CARWINGS telematics system
- 7" colour screen
- 6 speakers
- Colour reversing camera
- Cruise control or speed limiter

COMFORT AND CONVENIENCE

- B drive mode (enhances regenerative braking)
- Pearlescent paint
- Energy efficient auto air conditioning (digital type)
- Auto wipers & lights

EXTERIOR

- Halogen headlamps with 'Follow Me Home' function

STYLING

- Black or stone suede-effect trim

OPTIONS AT EXTRA COST

- Metallic paint
- Pearlescent paint
- Arctic White solid paint
- 6.6kW on-board charger* (includes the 7 pin mode 3 type 3 cable AND the 3 pin EVSE cable)
- Solar cell spoiler

*Allows home and public charging at 32 Amp

TEKNA

5 DOOR
80 KW AC ELECTRIC MOTOR
SINGLE GEAR AUTO

ADDITIONAL TO ACENTA GRADE

AUDIO AND TECHNOLOGY

- BOSE 7 speakers system with subwoofer
- 360° Around View Monitor

COMFORT AND CONVENIENCE

- Heated front & rear seats
- Heated steering wheel
- Heated exterior mirrors

STYLING

- Full black leather trim**
- 17" alloy wheels

EXTERIOR

- LED headlamps with 'Follow Me Home' function

*Allows home and public charging at 32 Amp

**Some parts of leather seats may contain artificial leather, please contact your dealer for full details.

NEW LEAF

MODEL		LEAF
Body type		5 door hatchback
Available grades		Visia, Visia+, Acenta, Tekna
Seating capacity	persons	5
ENGINE		
Engine code		EM57
Elec. Motor type		AC synchronous
Max. engine power ¹⁾	kW(PS)/min-1	80[109]/3008-10000rpm
Max. torque ¹⁾	Nm/min-1	254 /0-3008rpm
max RPM		10,500
Energy type		Electricity
BATTERY		
Type		Laminated lithium ion
Voltage	V	360
Capacity	kWh	24kWh, 48modules
Number of cells		192
CHARGER		
On-board charger	kW	3.6kW, 6.6kW(option)
Rapid Charging Capability	kW	50
Charging cable		6m long - 3.0kg
DRIVE TRAIN		
Clutch type (AT)		Automatic
Transmission code		RE1F61B
Gear ratio		Single Speed Gear Reduction
Final drive ratio (AT)		8.1938
Driven wheels		Front
CHASSIS		
Suspension front		Independent Mac Pherson strut
rear		Torsion beam axle
Steering		Electric power assisted
Braking system		CLZ31VE 283x28t
	--	AD11VE+DS17 292x16t
Stability control system (option)		ESP (Standard)
Wheel size (option)		6.5J 16 O/S40 / 6.5J 17 O/S45
Tyre size (option)		205/55R16 / 215/50R17
Tyre Make and model		

- 1) In accordance with 1999/99/EC.
 2) Figures in accordance with EC Directive. Kerb weight condition is without driver and including coolant, oils, fuel, spare wheel and tools. Pay load will be reduced depending on the options and/or accessories installed.
 3) In accordance with UN/ECE Regulation 101
 4) Figures shown are with driver + 4 passengers and luggages and max. kerb weight.

NEW LEAF

MODEL		LEAF
Body type		5 door hatchback
Available grades		Visia, Visia+, Acenta, Tekna
WEIGHTS & DIMENSIONS		
Kerb weight min./max. ²⁾ Visia Grade	kg	1474/1503
Kerb weight min./max. ²⁾ Acenta Grade	kg	1493/1519
Kerb weight min./max. ²⁾ Tekna Grade	kg	1512/1541
Gross Vehicle Weight	kg	1,945
Max. pay load ²⁾	kg	395
Max axle load FR ²⁾	kg	1,030
Max axle load RR ²⁾	kg	960
Overall length	mm	4445
Overall width	mm	1770
Width, door mirror to door mirror	mm	1967
Overall height	mm	1545 / 1550
Wheelbase	mm	2700
FR Overhang	mm	952
RR Overhang	mm	788
Track front	mm	1540 / 1530
Track rear	mm	1535 / 1525
Min. Ground clearance	mm	100 / 108 (rear tyre deflector)
Turning radius	m	5.2 / 5.4
Towing capacity	kg	N/A
Roof load capacity	kg	N/A
Luggage capacity (VDA)	L	370 (std) / 355 (bose)
Luggage capacity (until roof)	L	911.6 (Lugg Floor to Head Liner)
max. with folded seats (VDA)	L	720L (to top of seats)
Cd		0.291 (16") / 0.289 (17")
PERFORMANCE		
Electricity consumption ³⁾	Wh/km	150
Autonomy (NEDC) ³⁾	km/miles	199 / 124
CO2 mass emission (Combined)	g/km	0
Max. speed	mph	16inch 87 mph 17inch 89 mph
Acceleration (0 - 62 mph)	sec	11.5
Min. turning circle (kerb to kerb)	m	16inch 10.4 17inch 10.8

- 1) In accordance with 1999/99/EC.
 2) Figures in accordance with EC Directive. Kerb weight condition is without driver and including coolant, oils, fuel, spare wheel and tools. Pay load will be reduced depending on the options and/or accessories installed.
 3) In accordance with UN/ECE Regulation 101
 4) Figures shown are with driver + 4 passengers and luggages and max. kerb weight.



You care about your Nissan so Nissan will care for you. That's why we'll make the following commitment:

YOU care about staying on the road when your Nissan is in for service or repair.

NISSAN will keep you mobile free of charge.

YOU care about quality enough to have your Nissan serviced at a Nissan dealership.

NISSAN says thanks by giving you continuous AXA roadside assistance for free.

YOU care about getting the best value for money when it comes to service and repair.

NISSAN will price match like for like competitor written quotes within 10 miles of your local dealer.

YOU care about having your problems resolved quickly.

NISSAN will propose how to resolve any problem within two working days.

YOU care about getting the right Nissan model, engine and gearbox to test drive.

NISSAN will guarantee that's what you'll get when you pre-book your test drive either online or through our customer service centre.

YOU + NISSAN
CARE

For terms and conditions, please visit nissan.co.uk/care

YOU care about doing extra-long journeys in your car

NISSAN will lend you a petrol or diesel engine Nissan free of charge for up to 14 days every year while we develop a UK-wide rapid charging network for you

YOU care about making the right decision when purchasing the Nissan LEAF

NISSAN will give you peace of mind by letting you test drive the LEAF for 24 hours

YOU care about having a functional battery

NISSAN will replace any part of the battery that causes a capacity loss of below 9 bars (out of 12) free of charge

YOU care about always being mobile

NISSAN will be there to help with Nissan EV Pan-European Roadside Assistance in the unlikely event that you become stranded

YOU care about being able to charge your car quickly on your journey

NISSAN will let you rapid-charge your car at participating dealerships and Motorway Services free of charge

YOU + NISSAN
CARE-EV

For terms and conditions, please visit nissan.co.uk/care-ev

INTRODUCING OUR

commitment TO YOU



Nissan. Innovation that excites.

Visit our website at:
www.nissan.co.uk

Dealer stamp:



Every effort has been made to ensure that the content of this publication is correct at the time of going to press (October 2014). In accordance with the company's policy of continuously improving its products, Nissan Europe reserves the right to change at any time the specification and the vehicles described and shown in this publication. Nissan dealers will be informed of any such modifications as quickly as possible. Please check with your local Nissan dealer to receive the most up-to-date information. All rights reserved. Reproduction in whole or part of this brochure without the written permission of Nissan Europe is forbidden.

Part Number 99999-54137. Printed in the UK.

[REQUEST A TEST DRIVE](#)





[Contents](#) | [Exterior design](#) | [Interior design](#) | [Technology & Performance](#) | [Style & Accessories](#) | [Technical Specifications](#) | [Price List](#)

[Print](#) | [Close](#)

[Leaf Model and option prices](#) | [CO2 emissions](#)

[REQUEST A TEST DRIVE](#)



LEAF

Doorplan	Grade	Engine	Transmission	Basic Price	VAT	Total Retail	On The Road Price	On The Road Price after Government Incentive*
5 door	VISIA	80kW AC Electric Motor	Single Reduction Gear (Auto)	22,029.17	4,405.83	26,435	26,490	21,490
	VISIA+	80kW AC Electric Motor	Single Reduction Gear (Auto)	22,945.83	4,589.17	27,535	27,590	22,590
	ACENTA	80kW AC Electric Motor	Single Reduction Gear (Auto)	23,779.17	4,755.93	28,535	28,590	23,590
	TEKNA	80kW AC Electric Motor	Single Reduction Gear (Auto)	25,455.83	5,089.17	30,535	30,590	25,590

Basic and Total Retail includes delivery to the dealership and number plates. On the road price includes £55 government first registration fee.

* Government applied Plug-in Car Grant (referred to as 'Government Incentive') of 25% up to a maximum of £5,000 can be applied to LEAF sales.



LEAF FLEX - (Battery Leasing)

Doorplan	Grade	Engine	Transmission	Basic Price	VAT	Total Retail	On The Road Price	On The Road Price after Government Incentive*
5 door	VISIA FLEX	80kW AC Electric Motor	Single Reduction Gear (Auto)	17,862.50	3,572.50	21,435	21,490	16,490
	VISIA+ FLEX	80kW AC Electric Motor	Single Reduction Gear (Auto)	18,779.17	3,755.83	22,535	22,590	17,590
	ACENTA FLEX	80kW AC Electric Motor	Single Reduction Gear (Auto)	19,612.50	3,922.50	23,535	23,590	18,590
	TEKNA FLEX	80kW AC Electric Motor	Single Reduction Gear (Auto)	21,279.17	4,255.83	25,535	25,590	20,590

Basic and Total Retail includes delivery to the dealership and number plates. On the road price includes £55 government first registration fee.

* Government applied Plug-in Car Grant (referred to as 'Government Incentive') of 25% up to a maximum of £5,000 can be applied to LEAF sales.

Price excludes obligatory monthly battery rental

Monthly Battery Rental including VAT		Annual Mileage*				
		7,500 miles	9,000 miles	10,500 miles	12,000 miles	15,000 miles
Contract Term*	36 months and over	£70	£77	£85	£93	£109
	24 months	£80	£87	£95	£103	£119
	12 months	£90	£97	£105	£113	£129

* Additional combinations of contract term and annual mileage are available.

Monthly Battery Rental includes Roadside Assistance for all breakdowns. Battery Lease contract provided by RCI Financial Services Ltd t/a Nissan Finance and is subject to status. Excess mileage is charged at £7.50 incl VAT/100 miles or part thereof. Terms and conditions apply. Please contact your local Nissan dealer for further details

LEAF OPTIONS

	VISIA	VISIA+	ACENTA	TEKNA	Basic	VAT	Total
Metallic paint	<input type="radio"/>	<input type="radio"/>	<input type="radio"/>	<input type="radio"/>	437.50	87.50	525
Pearlescent paint	<input type="radio"/>	<input type="radio"/>	<input type="radio"/>	<input type="radio"/>	604.17	120.83	725
Arctic White paint	<input type="radio"/>	<input type="radio"/>	<input type="radio"/>	<input type="radio"/>	208.33	41.67	250
Rear roof spoiler with solar cells			<input type="radio"/>	<input type="radio"/>	250	50	300
Rapid Charge Port (allowing 50kW DC charging)	<input checked="" type="radio"/>	<input checked="" type="radio"/>	<input checked="" type="radio"/>	<input checked="" type="radio"/>	-	-	-
NissanConnect with rear view camera		<input checked="" type="radio"/>			-	-	-
6.6 kW on board charger* (allowing home and public charging at 32AMP)	<input type="radio"/>	<input type="radio"/>	<input type="radio"/>	<input type="radio"/>	958.33	191.67	1150
Protection Pack ▪Velour carpet mats ▪Mudguards - front and rear ▪Trunk Mat (with or without BOSE)	<input type="checkbox"/>	<input type="checkbox"/>	<input type="checkbox"/>	<input type="checkbox"/>	157.50	31.50	189
Design Pack ▪Chrome/coloured mirror caps ▪Chrome strip door sills	<input type="checkbox"/>	<input type="checkbox"/>	<input type="checkbox"/>	<input type="checkbox"/>	249.17	49.83	299
Alloy Wheel x 4**	<input type="checkbox"/>	<input type="checkbox"/>	<input type="checkbox"/>		678	137	815
Dog Gaurd	<input type="checkbox"/>	<input type="checkbox"/>	<input type="checkbox"/>	<input type="checkbox"/>	186	38	224
Tailgate entry guard	<input type="checkbox"/>	<input type="checkbox"/>	<input type="checkbox"/>	<input type="checkbox"/>	84.99	17	101.99
Chrome trunk finisher	<input type="checkbox"/>	<input type="checkbox"/>	<input type="checkbox"/>	<input type="checkbox"/>	126.65	25.35	152
Rear parking sensors	<input type="checkbox"/>	<input type="checkbox"/>	<input type="checkbox"/>	<input type="checkbox"/>	308	62	370
Hologram entry guard (set of 2)	<input type="checkbox"/>	<input type="checkbox"/>	<input type="checkbox"/>	<input type="checkbox"/>	143.37	28.63	172
Seat covers	<input type="checkbox"/>	<input type="checkbox"/>	<input type="checkbox"/>	<input type="checkbox"/>	245	49	294
Coloured mirror caps*	<input type="checkbox"/>	<input type="checkbox"/>	<input type="checkbox"/>	<input type="checkbox"/>	186	38	224

Optional - Standard - Optional Dealer Fit -

Dealer fit option prices include fitting but are only a guide. Please check with your local Nissan dealer for exact prices.

*Available in: Red, Black, White, Grey, Purple, Orange, Carbon Look, Chrome (Carbon Look + Chrome prices vary)

** Price excludes tyres

CO₂ MASS EMISSIONS AND VEHICLE EXCISE DUTY

Vehicle	Engine	Transmission	Body Style	CO ₂ Mass Emissions g/km	12 months Vehicle Excise Duty*
LEAF	80kW AC Electric Motor	Single Reduction Gear (Auto)	5 door	0	£0

* Determined by CO₂ emissions figure and fuel type - see "Further information". NB. Navara VED is fixed at £225 as it is considered a commercial vehicle.

[REQUEST A TEST DRIVE](#)

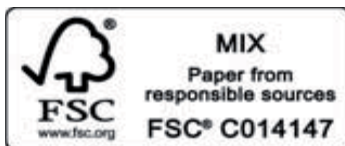


NISSAN MOTOR (GB) LIMITED

The Rivers Office Park
Denham Way
Maple Cross
Rickmansworth
Hertfordshire
WD3 9YS

Visit our website at: www.nissan.co.uk

Dealer stamp:



Part Number: 99999 54183

Prices effective from 1st April 2015 unless otherwise stated