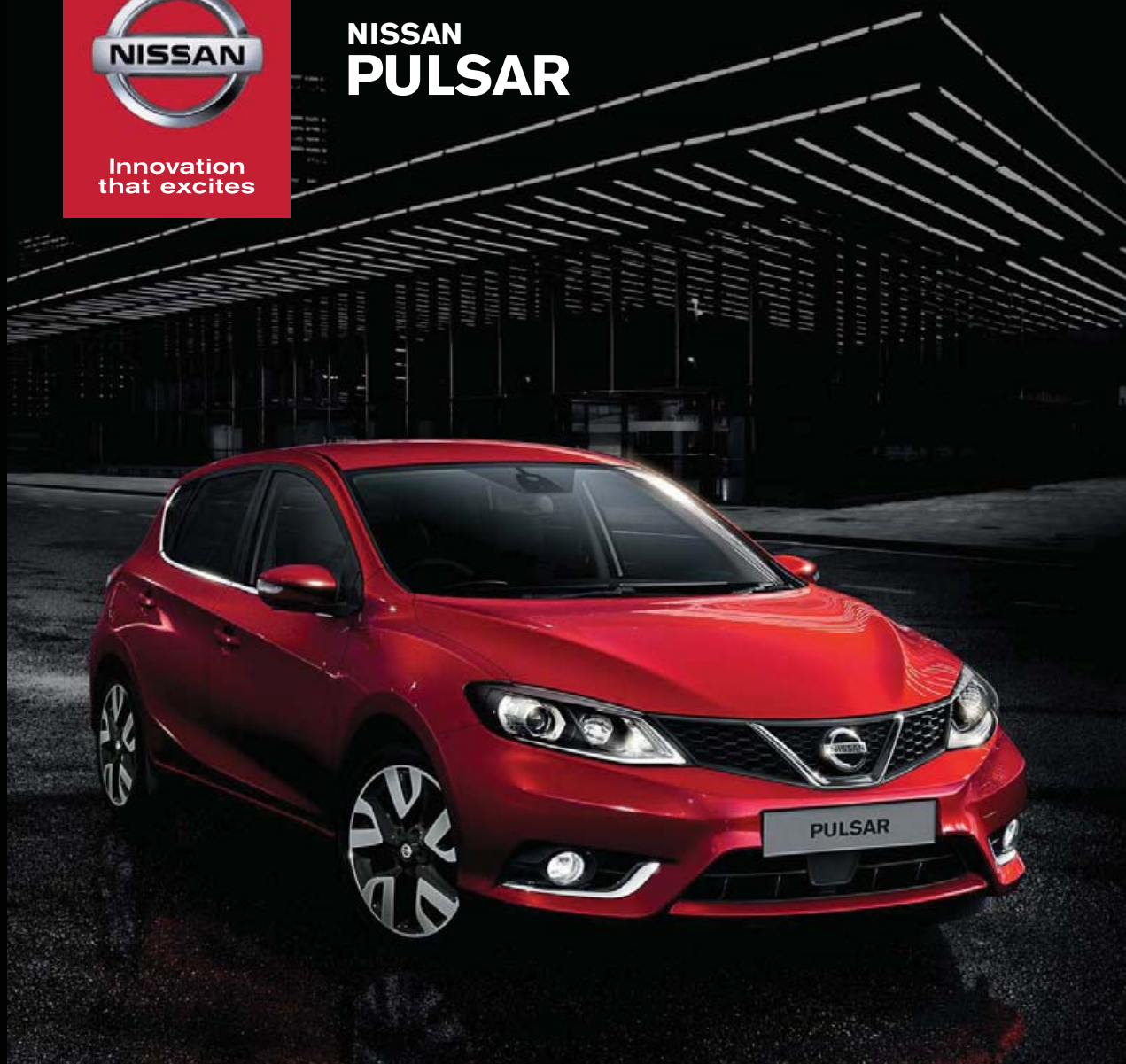




Innovation  
that excites

# NISSAN PULSAR



[Exterior design](#) | [Interior design](#) | [Technology and Performance](#) | [Safety](#) | [Versatility](#) | [Accessory](#) | [Colours and trims](#) | [Technical Specifications](#) | [Price List](#)

[Print](#) | [Close](#)



# BRAND NEW NISSAN PULSAR

## IT'S GOT IT ALL

**MEET YOUR MATCH.** Sophisticated and self-assured with a bold, athletic design and an unprecedented range of advanced technologies, all-new Pulsar energises your drive. A living synthesis of Nissan innovation, this uncompromising star means business.



[Exterior design](#) | [Interior design](#) | [Technology and Performance](#) | [Safety](#) | [Versatility](#) | [Accessory](#) | [Colours and trims](#) | [Technical Specifications](#) | [Price List](#)

[Print](#) | [Close](#)

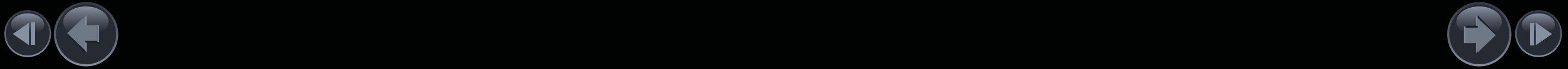
[Page 1](#) | [Page 2](#)





# BODY CONSCIOUS

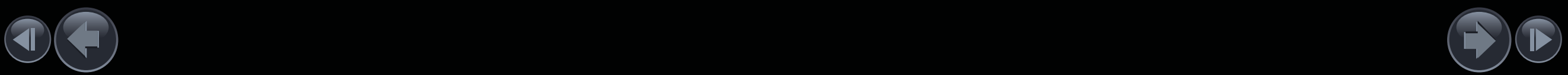
**SPORTY AND STYLISH**, smart and sleek, Nissan Pulsar's flowing curves have a magnetic quality. Keep your eyes on those racy contours and that purposeful profile: they're the flavour of what's to come.





## OPEN MINDED

**TAKE TIME TO REFLECT:** never has a hatchback given you so much room to breathe. Incredibly light and airy with extra room for both you and all your passengers, Pulsar's cabin takes the meaning of generosity to new levels.



EXTREMELY  
GENEROUS

**BEST-IN-CLASS**

Thanks to best-in-class leg room, your rear passengers can stretch their legs while you're on the move.

**LEG ROOM**

**692MM**





# SURPRISING ALL ROUND

**INSIDE NISSAN PULSAR**, all is elegance and finesse: soft touch materials and chrome detailing, extra-wide door armrests and amazing all-round visibility. With the comfort and convenience of advanced features like the Nissan Intelligent Key, Push Button Engine Start, Automatic Lights and Wipers and Dual Zone Climate Control, it's a model of contemporary quality and style.



## NISSAN ADVANCED DRIVE-ASSIST DISPLAY

# INNOVATION UNDER YOUR NOSE

It's all there, right in front of you, on a full colour 5" TFT information display: from turn-by-turn directions to caller ID, audio track details to Safety Shield status, Nissan's Advanced Drive-Assist Display serves up all your info under your nose, so you keep your eyes on the road.



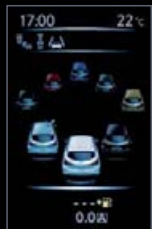
**CALLER ID**  
Check your calls while keeping your eyes on the road.



**AUDIO**  
Get full details on the artists and music you're enjoying while in motion.



**SAFETY SHIELD**  
Keep clear of trouble thanks to visual and audible warning signals.



**COLOUR SELECTION**  
Customise your screen by choosing the colour of the car displayed.



**TURN BY TURN NAVIGATION**  
Never miss a turn thanks to rapid access to essential navigation info.



**TYRE PRESSURE MONITORING SYSTEM**  
No more guesswork: Each tyre pressure is displayed on screen and a signal lights up on the dash if the pressure is low.



NissanConnect

Bluetooth

## NISSANCONNECT MOBILE APPS

**SMART AND FUNCTIONAL.** The NissanConnect is packed with a rich range of features and is incredibly easy to use thanks to the high resolution 5.8" anti-glare touchscreen. With a powerful combination of audio, navigation and communications functions, as well as cutting edge connectivity and smartphone integration features.

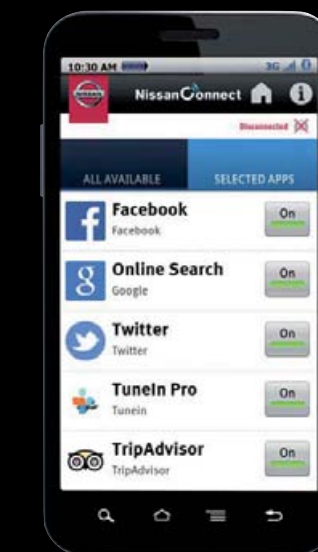
**CONNECTED WHEREVER YOU GO.** NissanConnect offers Smartphone integration. Enjoy an ever evolving list of applications\* from the comfort of your Nissan's display screen, all tailored to enhance your overall driving experience in a safe way. Your Pulsar will become an integrated piece of your connected lifestyle, just like your smartphone, tablet and computer.

**INTELLIGENT DRIVER ASSISTANCE** and navigation functions support you in all kinds of traffic situations.

**STREAMING AUDIO VIA BLUETOOTH®.** Enjoy digital radio, Over The Air internet radio or stream music from your mobile phone.

**IPOD/USB INPUT.** Plug in your iPod or MP3 player to access your entire music library while you're on the road.

\*Only use NissanConnect services when safe to do so. Some applications may be introduced at a later date. NissanConnect service subscription required but is available on a complimentary basis for 2 years from purchase. Service and applications are only available in select European countries and on select Nissan models. Service and applications may be provided by third parties outside Nissan's control, and are subject to change without notice or liability to Nissan or its agents (including, without limitation, services cancelled/suspended by third parties). Certain remote functions require compatible phone or device, not included with vehicle. Cellular networks are provided by cellular companies, and are not within Nissan's control. Cellular networks not available in all areas. Roaming charges and/or data usage charges may apply. Nissan is not responsible for any equipment replacement or upgrades or associated costs that may be required for continued operation due to service changes.







## NISSAN AROUND VIEW MONITOR YOUR VIRTUAL BIRD'S EYE VIEW

Using four cameras, the Around View Monitor delivers a panoramic view of your vehicle, as well as split-screen close-ups of the front, rear and side to make parking safer and easier.



For terms and conditions relating to Nissan Technologies visit [www.Nissan.co.uk/technology/terms](http://www.Nissan.co.uk/technology/terms)



### DON'T BUMP YOUR NOSE.

In Drive or Reverse, the display gives you both a front and overhead view, so you know just how far to pull up – without going too far.

### COMPLETE THE PICTURE.

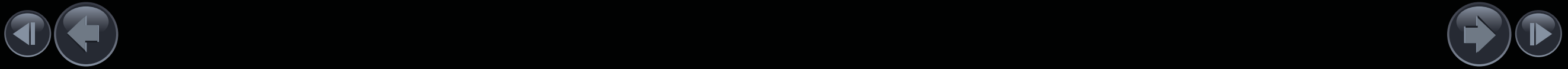
Located under your driver's side mirror, this camera helps round out your virtual 360° bird's-eye view, whether you're in Drive or Reverse.

### SPARE YOUR WHEELS.

In Drive or Reverse, you can push the camera button to switch from a bird's eye view to a side view of the vehicle. A great help for seeing how close you are to the curb.

### LOOK OUT BELOW.

In Reverse, the display helps you see what's directly behind you, while the overhead view helps with shorter objects otherwise hidden below your window.





# PUT YOUR FOOT DOWN – WITH A CLEAN CONSCIENCE

There's no compromise between power and performance with Nissan Pulsar. The downsized, state-of-the-art all-turbo engine line-up combines impressive fuel economy and high torque responsiveness. You can choose a direct injection turbo-charged DIG-T 115 petrol engine or opt for the fuel sipping economy of the dCi 110 diesel engine. Either way, you'll be amazed.

**Xtronic**  
Xtronic automatic transmission enhances driving pleasure further by providing smoother, more responsive acceleration without sacrificing fuel economy.

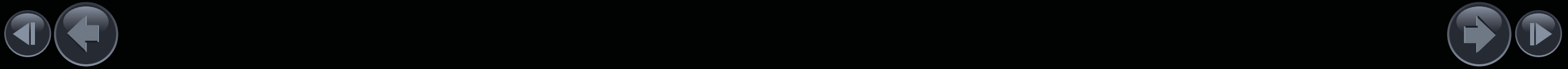
**STOP/START SYSTEM**  
Nissan's automatic Stop/Start System is standard on all models. To save even more fuel, it stops the engine when it's not needed, at traffic lights for example, and then smoothly and quickly restarts as you push the accelerator pedal to pull away.



**ACTIVE TRACE CONTROL**  
delivers confident handling around the corners by controlling brake pressure at individual wheels to aid tracing at corners and help smooth vehicle response.

ENGINE	OUTPUT (PS)	TORQUE (NM)	CO <sub>2</sub> (g/km)*	FUEL CONSUMPTION* COMBINED (l/100km) / (mpg)
1.2 DIG-T 115 MT	115	190 / 2000	117	5.0 / (56.5)
1.2 DIG-T 115 X-Tronic	115	165 / 1750	119	5.1 / (55.4)
1.6 DIG-T 190 MT	190	240 / 1600-5200	134 (17" WHEEL) & 138 (18" WHEEL)	5.7 / (49.5) (17" WHEEL) or 5.9 / (47.9) (18" WHEEL)
1.5 dCi 110 MT	110	260 / 1750-2500	94	3.6 / (78.5)

\*Tentative pending final homologation.



## NISSAN SAFETY SHIELD

# LOOKING OUT FOR YOU

Drive with confidence, shielded from danger, thanks to an innovative range of smart technologies that monitor your vehicle's systems and surroundings at all times. Using an array of sensors including the rear camera and front radar, Nissan's advanced safety systems work together to warn you of any potential dangers and offer you and your passenger's outstanding protection.



**Safety Award** In 2014, PULSAR was awarded the maximum five-star rating by Euro NCAP (European New Car Assessment Programme).



## ENVISAGE THE INVISIBLE

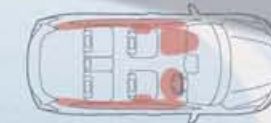
**TYRE PRESSURE MONITOR SYSTEM.** No more guesswork: all your tyre pressures are displayed on screen and a signal lights up on the dash if they're low.

**BLIND SPOT WARNING.** What you can't see, the Blind Spot Warning System can. If there's a vehicle in the blind spot area on either side of Pulsar, a warning light will illuminate on the wing mirror to let you know. If you're indicating to change lanes and a vehicle is dangerously close, the warning light will start flashing and you'll hear an audible warning signal too.

**LANE DEPARTURE WARNING.** Keep focused: you'll be warned if you drift out of your lane. Unless you're indicating, the system will give you a signal to remind you to straighten up.

**FORWARD EMERGENCY BRAKING.** Depending on speed and situation, Nissan's Forward Emergency Braking system can reduce the impact of a collision by automatically activating the brakes if you get too close to the car in front of you.

**MOVING OBJECT DETECTION.** Meet your digital parking co-pilot. With 360° degree coverage, at parking speeds this function will warn you if anything moves in close proximity to the car – for instance a family pet or child on a bike.



**6** STANDARD AIR BAGS

**HELPING TO PROTECT YOU.** With 6 standard airbags available, including side and curtain airbags as well as the Nissan Safety Shield, Pulsar is equipped with a full suite of active and passive safety features to offer you and your passengers outstanding protection.

\*For terms and conditions relating to Nissan technologies visit [www.Nissan.co.uk/technologyterms](http://www.Nissan.co.uk/technologyterms)





## SLIDE, FOLD, PACK & GO

Despite its class-leading rear leg-room, Nissan Pulsar's family-size luggage space makes sure nothing gets left behind. What's more, its 385 litres boot capacity becomes 1,395 litres with the seats folded down. Thanks to four different seat combinations and a 60/40 split, you've plenty of options for bulkier goods - so slide in the golf bag, pack up the pushchair, load the bikes and go!



**1,395** LITRES

You, your passenger and a whole load of cargo.

Keep smaller items safe and within reach thanks to lots of handy compartments and hidden storage space.



# SIGNATURE STYLE



1. Style Pack (side sills, mirror caps) chrome
2. Front lip finisher, chrome
3. 17" diamond cut dark grey alloy wheel
4. Velour mat, entry guard
5. Sports pedals
6. Trunk mat, rear bumper upper protection
7. Exhaust finisher
8. Loadcarrier, aluminium
9. Universal tablet holder

**STAMP YOUR OWN STYLE ON PULSAR** with a unique combination of chrome finishers and smart practical accessories. From styling plates to sports pedals, tablet holders to trunk mats, load carriers to customised alloy wheels, tailor your Nissan Pulsar to suit your personal taste and lifestyle.



## COLOURS

M: Metallic - S: Solid - P: Pearlescent



Alabaster White - S



Flame Red - S



Storm White - P



Starburst Silver - M



Twilight Grey - M



Metallic Black - M



Force Red - M



Bronze - M



Azure - M

## ALLOY WHEELS

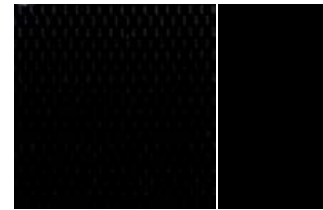


16" diamond cut alloy

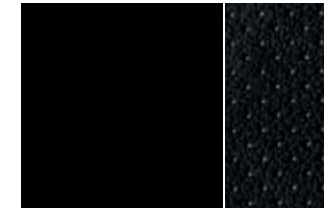


17" diamond cut alloy

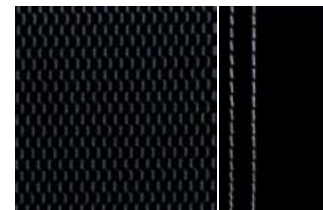
## TRIMS



VISIA, ACENTA & n-tec - GRAPHITE CLOTH



TEKNA - GRAPHITE LEATHER



ACENTA - PATTERNED TRICOT FABRIC, BLACK WITH WHITE STITCHING DIG-T 190



TEKNA - LEATHER WITH WHITE STITCHING DIG-T 190

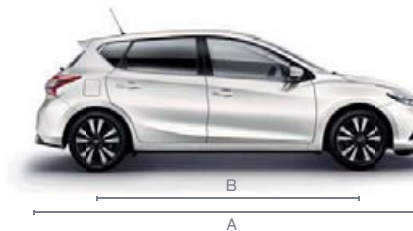
## DIMENSIONS

A: Overall Length: 4,385 MM

B: Wheelbase: 2,700MM

C: Overall width: 1,768 MM

D: Overall height: 1,520MM



YOU CARE ABOUT YOUR NISSAN SO NISSAN WILL CARE FOR YOU.  
THAT'S WHY WE'LL MAKE THE FOLLOWING COMMITMENT:

**YOU** care about staying on the road when your Nissan is in for service or repair.

**YOU** care about quality enough to have your Nissan serviced at a Nissan dealership.

**YOU** care about getting the best value for money when it comes to service and repair.

**YOU** care about having your problems resolved quickly.

**YOU** care about getting the right Nissan model, engine & gear box to test drive.

**NISSAN** will keep you mobile free of charge.

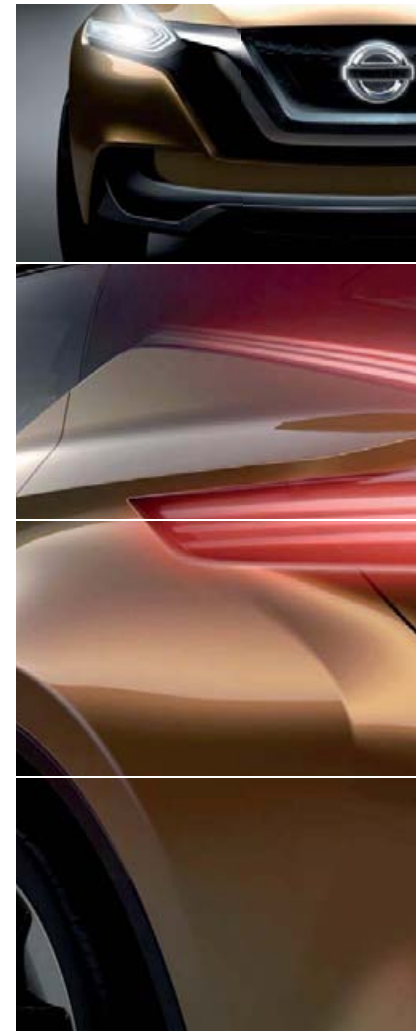
**NISSAN** says thanks by giving you continuous Nissan Roadside Assistance for free.

**NISSAN** will price match like for like competitor written quotes within 10 miles of your local dealer.

**NISSAN** will propose how to resolve any problem within 2 working days.

**NISSAN** will guarantee that's what you'll get when you pre-book your test drive either online or through our customer service centre.

YOU + NISSAN  
**CARE**



### AT NISSAN, YOU BRING OUT THE BEST IN US.

You spark our imagination. You provoke our ingenuity. You inspire us to change the rules and innovate. And at Nissan, innovation is not just about additions and extensions; it's about crossing the line to reinvent the status quo. It's about developing unexpected solutions to satisfy your wildest and most pragmatic desires. At Nissan, we design cars, accessories and services that break the mould - making the practical exciting and the exciting practical to offer you a more exhilarating driving experience everyday.

### NISSAN SERVICE CONTRACTS

A NISSAN Service Plan is the best way to give your new Nissan Pulsar the maintenance it deserves!

We'll take good care of your Nissan whilst keeping your servicing costs at a fixed price over the years.

As part of the service we will change your parts and fluids in accordance with Nissan official service schedules and perform check ups, providing you ultimate peace of mind.

When your Pulsar is due a service, Nissan will propose the most suitable service and a convenient time for you.



### NISSAN PULSAR OFFERS YOU:

3- YEAR WARRANTY OR 60,000 MILE  
12 YEAR ANTI-CORROSION BODY  
PERFORATION WARRANTY

DIESEL: 12 MONTH OR 18,000 MILE  
SERVICE INTERVAL

PETROL: 12 MONTH OR 12,500 MILE  
SERVICE INTERVAL

### NISSAN CARE WARRANTY

Nissan CARE Warranty gives you the opportunity to extend your 3 year / 60,000 mile manufacturer warranty for a specific time of your choosing. Simply select the warranty that best suits you.

If a repair is necessary, only Nissan genuine parts will be used and fitted by Nissan trained technicians.

You will also receive Pan European Nissan Roadside Assistance for the duration of the Care Warranty.



visit our website at: [www.nissan.co.uk/pulsar](http://www.nissan.co.uk/pulsar)

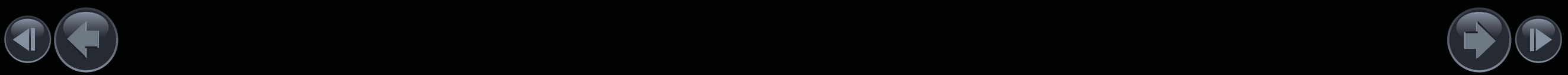
Follow Nissan PULSAR on:



For terms and conditions relating to Nissan Technologies visit [www.Nissan.co.uk/technologyterms](http://www.Nissan.co.uk/technologyterms)

Every effort has been made to ensure that the content of this publication is correct at the time of going to press (April 2015). This brochure has been produced featuring prototype vehicles exhibited at motor shows. In accordance with the company's policy of continuously improving its products, Nissan Europe reserves the right to change at any time the specification and the vehicles described and shown in this publication. Nissan dealers will be informed of any such modifications as quickly as possible. Please check with your local Nissan dealer to receive the most up-to-date information. Because of the limitations of the printing processes used, the colours shown in this brochure may differ slightly from the actual colours of the paint and interior trim materials used. All rights reserved. Reproduction in whole or part of this brochure without the written permission of Nissan Europe is forbidden.

This brochure is made from chlorine free paper – GEB PULSAR DIG-T BROCHURE 04/2015 – 99999- 54155 – Printed in EU.  
Created by NEW BBDO, France – Tel.: +33 1 40 62 37 37 and produced by eg+ worldwide, France – Tel.: +33 1 49 09 25 35.







Innovation  
that excites

NISSAN

# ALL NEW PULSAR



## The All New Nissan Pulsar

Want a car that reflects the rhythm of your daily life? With its dynamic head-turning design, award winning technology and smart spacious interior, look no further than the All New Nissan Pulsar.



## GRADES

### VISIA

#### SAFETY & SECURITY

- 3 x Rear headrests
- 6 Airbags
- ABS + EBD + ESP and Brake Assist
- Active Trace Control
- Tyre Pressure Monitoring System
- ISOFIX childseat anchorage points (rear)
- Rear door child locks
- Immobiliser
- Remote central locking with superlocking

#### AUDIO & NAVIGATION

- 5" High definition full colour TFT screen
- Bluetooth with microphone
- Audio CD with 4 speakers
- USB / iPod connectivity
- Aux socket

#### EXTERIOR STYLING

- 16" Diamond cut alloy wheels
- Chrome window surround
- Body coloured doors mirrors and handles
- Carbon effect rear diffuser
- Black honeycomb front grille
- High level rear spoiler

#### INTERIOR STYLING

- Cloth trim

#### COMFORT & CONVENIENCE

- Idle Start Stop
- Manual air conditioning
- Steering wheel audio controls
- Tilt/telescopic adjustable steering
- Split folding bench 60:40
- Front and rear power windows
- Cruise control with speed limiter
- Electric adjustable exterior mirrors

### ACENTA

#### FEATURES ADDITIONAL TO VISIA:

#### SAFETY

- Forward Emergency Braking

#### AUDIO & NAVIGATION

- 6 speakers

#### INTERIOR STYLING

- Leather steering wheel & gear knob

#### EXTERIOR STYLING

- Front fog lights

#### CONVENIENCE

- Dual zone climate control
- Rear centre armrest with cupholder
- Heated exterior mirrors
- Automatic headlights
- Rain sensing wipers
- Nissan Intelligent Key + Engine start button

#### ADDITIONAL DIG-T 190 FEATURES

- 17" bespoke alloy wheels
- Privacy Glass
- Darkened bezel sport headlamps
- Chrome exhaust finisher
- LED headlamp + signature lighting
- FR sliding armrest
- White stitching for steering wheel, gear lever, door arm rest & seats
- Sports trim finisher with carbon print design

### n-tec

#### FEATURES ADDITIONAL TO ACENTA:

#### AUDIO AND NAVIGATION

- New NissanConnect 5.8" Touch-screen navigation & entertainment system
- DAB digital radio
- Reversing camera

#### EXTERIOR STYLING

- 17" Diamond cut alloy wheels
- Privacy Glass

#### INTERIOR STYLING

- Front sliding arm rest

#### CONVENIENCE

- LED headlights with LED signature

#### ADDITIONAL DIG-T 190 FEATURES

- 17" bespoke alloy wheels
- Darkened bezel sport headlamps
- Chrome exhaust finisher
- LED headlamp + signature lighting
- FR sliding armrest
- White stitching for steering wheel, gear lever, door arm rest & seats
- Sports trim finisher with carbon print design

### TEKNA

#### FEATURES ADDITIONAL TO n-tec

#### SAFETY

- Moving Object Detection
- Lane Departure Warning
- Blind Spot Warning

#### AUDIO & NAVIGATION

- Colour front, rear and side camera Around View Monitor system

#### INTERIOR STYLING

- Leather seats
- Front heated seats
- Graphite leather trim\*\*

#### CONVENIENCE

- Electric folding exterior mirrors

#### ADDITIONAL DIG-T 190 FEATURES

- 18" bespoke alloy wheels
- Darkened bezel sport headlamps
- Chrome exhaust finisher
- White stitching for steering wheel, gear lever, door arm rest & seats
- Sports trim finisher with carbon print design

\*\*Some parts of leather seats may contain artificial leather.



## ALL NEW NISSAN PULSAR

	DIG-T 115	dCi 110	DIG-T 190		
<b>MODEL</b>					
Available grades	VISIA, ACENTA, n-tec, TEKNA		ACENTA, n-tec, TEKNA		
Seating capacity	persons 5				
<b>ENGINE</b>					
Engine code	H5FT	K9K	KH3 (H110)		
No. of cylinders, configuration	4, in line				
Valves per cylinder	4	2	4		
Engine capacity	cm <sup>3</sup> 1197	1461	1618		
Bore x stroke	mm 72.2 x 73.1	76 x 80.5	79.7 x 81.1		
Max. engine power 1)	kW(PS)/min-1 85 (115)/4500	81 (110) / 4000	120 (163) / 5600		
Max. torque 1)	Nm/min-1 165 / 1750	260/1750-2500	240/2000-4000		
Compression ratio	10.01 ± 1.0 / 1	15: 5 : 1	10.5 : 1		
Fuel type	Petrol	Diesel	Petrol		
Fuel tank capacity	46L				
<b>DRIVE TRAIN</b>					
Transmission type	6-speed manual	Xtronic	6-speed manual		
Gear ratio	1st	3.727	4.006 (MIN)	3.727	3.364
	2nd	1.947	0.550 (MAX)	1.947	1.947
	3rd	1.323	N/A	1.226	1.323
	4th	0.975	N/A	0.838	0.975
	5th	0.763	N/A	0.652	0.763
	6th	0.638	N/A	0.560	0.638
	Reverse	3.687	3.771	3.687	3.292
Final Drive	3.933	3.517	0.733	4.313	
Driven wheels	2WD (Front)				
Nissan Stop/Start system	Yes				
<b>CHASSIS</b>					
Suspension	front	McPherson Strut & Anti Roll bar			
	rear	Twist Beam & Anti Roll Bar			
Steering	EPAS, Rack and pinion				
Braking system	Discs front and rear, power assisted, ABS incl EBD and Brake Assist				
Wheel size	16" x6.5", 17" x 7", 18" x 7"				
Tyre size	195/60R16, 205/50R17		205/50R17, 215/45R18		

## ALL NEW NISSAN PULSAR

	DIG-T 115	dCi 110	DIG-T 190				
<b>WEIGHTS &amp; DIMENSIONS</b>							
Transmission type	6-speed manual	Xtronic	6-speed manual				
Kerb weight min. / max. 2)	kg 1258 / 1304	1205/1205	1307/ 1352				
Gross Vehicle Weight	kg 1750	1750	1785				
Max. pay load 2)	kg 492	480	478				
Max. axle weight (PAW)	front	kg 965	965	1000	1000		
	rear	kg 875	785	875	875		
Max. trailer weight	braked	kg 1200	500	1200	1200		
	unbraked	kg 632	500	672	685		
Max. vert. load on coupling point	kg	75					
Overall length	mm	4387					
Overall width	excluding mirrors	mm	1768				
	including mirrors	mm	2017				
Overall height	mm	1520					
Wheelbase	mm	2700					
Ground clearance	mm	156					
Track	front	mm	16" 1540; 17" 1530				
	rear	mm	16" 1540; 17" 1530				
Min. turning circle (kerb to kerb)	m	10.2					
Rear knee room	mm	692					
Luggage space	max. length	mm	816				
	max. width	mm	1,381				
Height at rear seat level	mm	647					
Height to roof	mm	816					
Luggage capacity	VDA	l	385				
	max. with folded seats (VDA)	l	1395				
Length with rear seats folded	mm	1611					
<b>PERFORMANCE</b>							
Fuel consumption 3)	Urban cycle	l/100 km / mpg	6.3 / (44.8)	6.4 / (44.1)	4.1 / (68.9)	7.6 / (37.2)	7.7 / (36.7)
	Extra-urban	l/100 km / mpg	4.3 / (65.7)	4.4 / (64.2)	3.3 / (85.6)	4.6 / (61.4)	4.8 / (58.8)
	Combined	l/100 km / mpg	5.0 / (56.5)	5.1 / (55.4)	3.6 / (78.5)	5.7 / (49.5)	5.9 / (47.9)
CO2 mass emission (combined)	g/km	117	119	94	134	138	
Emission Level		EURO5b+			EURO6		
Max. Speed	kph / mph	190 / (118)	185 / (115)	190 / (118)	217 / (135)		
Acceleration	0 - 62 mph (0 - 100 kph)	sec 10.7	12.7	11.5	7.7		
Service intervals	Years/miles	1yr / 12,500		1 yr / 18,000	1yr / 12,000		

1) In accordance with 1999/99/EC

2) Figures in accordance with EC Directive. Kerb weight condition is without driver and including coolant, oils, fuel, spare wheel and tools. Pay load will be reduced depending on the options and/or accessories installed.

3) In accordance with 1999/100/EC. (Optional equipment, maintenance, driving behaviour, road and weather conditions may affect the official results)



## COMMITMENTS

YOU + NISSAN

YOU CARE ABOUT YOUR NISSAN SO NISSAN WILL CARE FOR YOU.  
THAT'S WHY WE'LL MAKE THE FOLLOWING COMMITMENT:

**YOU** care about staying on the road when your Nissan is in for service or repair.

**YOU** care about quality enough to have your Nissan serviced at a Nissan dealership.

**YOU** care about getting the best value for money when it comes to service and repair.

**YOU** care about having your problems resolved quickly.

**YOU** care about getting the right Nissan model, engine & gear box to test drive.

**NISSAN** will keep you mobile free of charge.

**NISSAN** says thanks by giving you continuous Nissan roadside assistance for free.

**NISSAN** will price match like for like competitor written quotes within 10 miles of your local dealer.

**NISSAN** will propose how to resolve any problem within 2 working days.

**NISSAN** will guarantee that's what you'll get when you pre-book your test drive either online or through our customer service centre.

YOU + NISSAN  
**CARE**

ALL ABOUT NISSAN





Nissan. Innovation that excites.

Visit our website at:  
[www.nissan.co.uk/pulsar](http://www.nissan.co.uk/pulsar)

Dealer stamp:



Every effort has been made to ensure that the content of this publication is correct at the time of going to press (Sep 2014). In accordance with the company's policy of continuously improving its products, Nissan Europe reserves the right to change at any time the specification and the vehicles described and shown in this publication. Nissan dealers will be informed of any such modifications as quickly as possible. Please check with your local Nissan dealer to receive the most up-to-date information. All rights reserved. Reproduction in whole or part of this brochure without the written permission of Nissan Europe is forbidden.

Part Number 99999-54156. Printed in the UK.





[Exterior design](#) | [Interior design](#) | [Technology and Performance](#) | [Safety](#) | [Versatility](#) | [Accessory](#) | [Colours and trims](#) | [Technical Specifications](#) | [Price List](#)

[Print](#) | [Close](#)

[Pulsar Model and option prices](#)

[Page 1](#) | [Page 2](#) | [Page 3](#)



# ALL NEW PULSAR

Doorplan	Grade	Engine	Transmission	Basic Price	VAT	Total Retail	On The Road Price
5 door	VISIA	DIG-T 115	6 manual	13,283.33	2,656.67	15,940	15,995
		DIG-T 115	Xtronic	14,408.33	2,881.67	17,290	17,345
		dCi 110	6 manual	14,616.67	2,923.33	17,540	17,595
	ACENTA	DIG-T 115	6 manual	14,658.33	2,931.67	17,590	17,645
		DIG-T 115	Xtronic	15,783.33	3,156.67	18,940	18,995
		dCi 110	6 manual	15,991.67	3,198.33	19,190	19,245
		DIG-T 190	6 manual	16,325.00	3,265.00	19,590	19,775
	n-tec	DIG-T 115	6 manual	15,783.33	3,156.67	18,940	18,995
		DIG-T 115	Xtronic	16,908.33	3,381.67	20,290	20,345
		dCi 110	6 manual	17,116.67	3,423.33	20,540	20,595
		DIG-T 190	6 manual	17,450.00	3,490.00	20,940	21,125
	TEKNA	DIG-T 115	6 manual	16,908.33	3,381.67	20,290	20,345
		DIG-T 115	Xtronic	18,033.33	3,606.67	21,640	21,695
		dCi 110	6 manual	18,241.67	3,648.33	21,890	21,945
		DIG-T 190	6 manual	18,575.00	3,715.00	22,290	22,475

Basic and Total Retail includes delivery to the Dealership and number plates. On the Road Price includes 12 months Government Vehicle Excise Duty (determined by CO<sub>2</sub> emissions figure and fuel type - see back page for details) and £55 Government First Registration Fee.



# ALL NEW PULSAR OPTIONS

	VISIA	ACENTA	n-tec	TEKNA	Basic	VAT	Total
17" Bold alloy wheels Black/Silver/Diamond cut (x4)*	<input type="checkbox"/>	<input type="checkbox"/>	<input type="checkbox"/>	<input type="checkbox"/>	800.00	160.00	960
Protection pack <ul style="list-style-type: none"> <li>▪ Front + rear mudguards</li> <li>▪ Luxury velour mats</li> <li>▪ Soft trunkliner</li> </ul>	<input type="checkbox"/>	<input type="checkbox"/>	<input type="checkbox"/>	<input type="checkbox"/>	207.50	41.50	249
Design pack: (Available in black, white or chrome) <ul style="list-style-type: none"> <li>▪ Front lip finisher</li> <li>▪ Rear bumper insert</li> <li>▪ Trunk lower finisher</li> </ul>	<input type="checkbox"/>	<input type="checkbox"/>	<input type="checkbox"/>	<input type="checkbox"/>	216.67	43.33	260
Chrome style pack (Also available in black or white) <ul style="list-style-type: none"> <li>▪ Side sills</li> <li>▪ Mirror caps</li> </ul>	<input type="checkbox"/>	<input type="checkbox"/>	<input type="checkbox"/>	<input type="checkbox"/>	207.50	41.50	249
Sport pack - Manual/Auto: Sports pedals, Rear upper bumper protection & Entry guards	<input type="checkbox"/>	<input type="checkbox"/>	<input type="checkbox"/>	<input type="checkbox"/>	275.00	55.00	330
Body side moldings - coloured (Black, white, silver, grey)	<input type="checkbox"/>	<input type="checkbox"/>	<input type="checkbox"/>	<input type="checkbox"/>	141.67	28.33	170
Mudguards - Front set	<input type="checkbox"/>	<input type="checkbox"/>	<input type="checkbox"/>	<input type="checkbox"/>	58.33	11.67	70
Mudguards - Rear set	<input type="checkbox"/>	<input type="checkbox"/>	<input type="checkbox"/>	<input type="checkbox"/>	58.33	11.67	70
Fixed Towbar & 7 Pin TEK	<input type="checkbox"/>	<input type="checkbox"/>	<input type="checkbox"/>	<input type="checkbox"/>	291.67	58.33	350
Fog lamp kit	<input type="checkbox"/>	<input type="checkbox"/>	<input type="checkbox"/>	<input type="checkbox"/>	341.89	68.11	410
Load carries Aluminium - T-track	<input type="checkbox"/>	<input type="checkbox"/>	<input type="checkbox"/>	<input type="checkbox"/>	141.67	28.33	170
Textile mats - Velours - black	<input type="checkbox"/>	<input type="checkbox"/>	<input type="checkbox"/>	<input type="checkbox"/>	40	8.00	48
Trunk Mat - black	<input type="checkbox"/>	<input type="checkbox"/>	<input type="checkbox"/>	<input type="checkbox"/>	33.33	6.67	40
Trunk liner soft - reversible	<input type="checkbox"/>	<input type="checkbox"/>	<input type="checkbox"/>	<input type="checkbox"/>	75.00	15.00	90

\*Price quoted for 4 x alloy wheels and does not include tyres

Dealer fit option prices include fitting but are only a guide. Please check with your local Nissan dealer for exact prices.

Optional - ○ Standard - ● Optional Dealer Fit - □







## NISSAN MOTOR (GB) LIMITED

The Rivers Office Park  
Denham Way  
Maple Cross  
Rickmansworth  
Hertfordshire  
WD3 9YS

Visit our website at: [www.nissan.co.uk](http://www.nissan.co.uk)

Dealer stamp:



Part Number: 99999 54183

Prices effective from 1st April 2015 unless otherwise stated

