



Innovation
that excites

NISSAN LEAF

Zero Emission



[Contents](#) | [Exterior design](#) | [Interior design](#) | [Technology & Performance](#) | [Style & Accessories](#) | [Plug-in and Go Guide](#) | [Technical Specifications](#) | [Price List](#)

[Print](#) | [Close](#)

[REQUEST A TEST DRIVE](#)





CITIZENS OF THE ROAD, UNITE. Be a part of the electric revolution: join over 65,000 100% electric Nissan LEAF owners already making the most of zero emissions driving across the globe in the world's best selling Electric Vehicle. Now built in Britain, we present the New 100% electric Nissan LEAF - the best just got better.

LOOK & FEEL

| | |
|-----------------|----|
| EXTERIOR DESIGN | 04 |
| INTERIOR DESIGN | 10 |

TECHNOLOGY & PERFORMANCE

| | |
|----------------------|----|
| DASHBOARD TECHNOLOGY | 12 |
| NISSAN CARWINGS | 14 |
| CHARGING LEAF | 16 |
| SAFETY | 18 |

STYLE & ACCESSORIES

| | |
|------------------|----|
| ACCESSORIES | 20 |
| COLOURS/TRIMS | 22 |
| ALL ABOUT NISSAN | 24 |



REQUEST A TEST DRIVE



**HOW SMART IS THE NEW
NISSAN LEAF? DISCOVER
FOR YOURSELF.**

Discover the smart fluidity of the
New Nissan LEAF. Charge it at
home or on the go, control it with
your smart phone and delight
in the uncompromising comfort,
outstanding technology and
unexpected power of a genuine
game-changer. The future just
got real.



[REQUEST A TEST DRIVE](#)

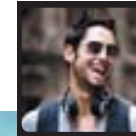




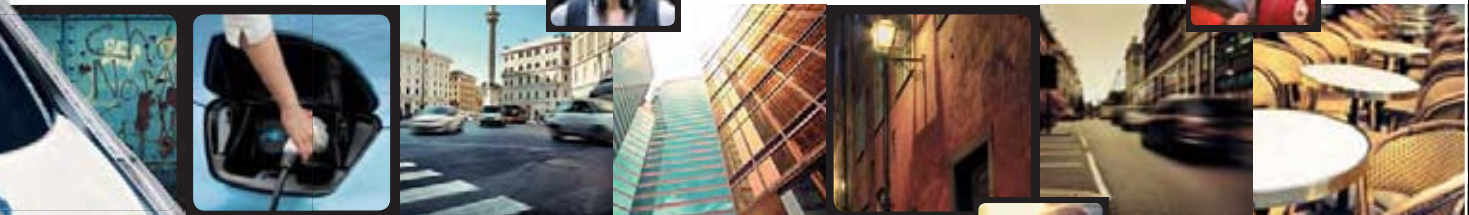
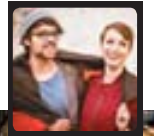
www.nissan-leaf.co.uk

6
EXTERIOR DESIGN

"I bought my LEAF as a second car. I now drive it 95% OF THE TIME."



"I love the LEAF because it's the cheapest car to run of ANY car I've EVER owned."



"Carwings is very cool. I warm up my LEAF every morning without even leaving the house!"



SPREAD THE WORD

IT'S SURPRISING what you can achieve in a car that's so clean it doesn't even have an exhaust pipe.

7
LOOK & FEEL

REQUEST A TEST DRIVE



DRIVE FOR CHANGE

IT MAY LOOK FAMILIAR, but it's revolutionary inside. Packed with innovation, New LEAF delivers a range of 124 miles (NEDC cycle). An all-electric, hi-tech eco-warrior right down to the tip of its aerodynamic nose, the New 100% electric Nissan LEAF is the purist's choice.

"I have no reason to know what the price of a litre of petrol is anymore."



"I knew the LEAF would be energy efficient; I didn't expect it to be so much fun to drive."

"The car is saving me loads of money on petrol and maintenance, and electricity costs are minimal."



www.nissan-leaf.co.uk

8
EXTERIOR DESIGN

9
EXTERIOR DESIGN

10
LOOK & FEEL

[Contents](#) | [Exterior design](#) | [Interior design](#) | [Technology & Performance](#) | [Style & Accessories](#) | [Plug-in and Go Guide](#) | [Technical Specifications](#) | [Price List](#)

[Print](#) | [Close](#)

[Page 1](#) | [Page 2](#) | [Page 3](#)

[REQUEST A TEST DRIVE](#)





CHECK IN

The New Nissan LEAF's 370L boot space is among the top in its category. Even with the BOSE® Sound System on the top of the range LEAF Tekna, you still have an impressive boot capacity of 355L.

LOAD UP

If you need more space, the rear seats are fully folding.



**ATTRACT
THE CROWD**

A FULL 5-SEATER offering adjustable height in the front and increased leg-room in the back, New Nissan LEAF is a real crowd-pleaser. New LEAF also offers you the option of heated seats and steering wheel, keeping you warm in an energy efficient way. Choose from a full leather trim or a planet-loving bio-fabric made from sugar cane.

[REQUEST A TEST DRIVE](#)



COOL TECH TOOLS

YOUR DIGITAL DASHBOARD. Login to New Nissan LEAF's control panel, dominated by beautiful blue-lit dials and a clear digital dash display. The elegant centre console with a 7" LCD screen completes the look of the future.



EV ANALYTICS

The combimeter helps to maximise your range by instantly displaying energy consumption and regeneration, state of charge, remaining energy, capacity levels and distance-to-empty in an easy to read format.

B-MODE DRIVING

Flick the mouse into B-mode and the hi-tech regenerative braking system will increase the energy recycled back into the power supply when you brake or decelerate.

360° VISION

Enjoy a crystal-clear view with the 360° Around View Monitor. Four wide-angled cameras offer a front, rear and/or side view as well as a bird's eye view for the ultimate ease of parking.

ECO-SOUNDS

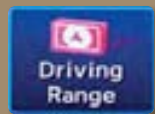
Ultra-compact and custom-designed for the New Nissan LEAF, the new BOSE® Energy-Efficient Series system delivers a powerful sound, whilst almost halving the usual amount of electricity needed. Maximise the benefit of Nissan LEAF's exceptionally quiet cabin by transforming it into a real auditorium.



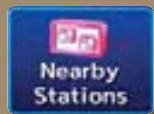


IN SYNC NISSAN CARWINGS

IT SUPPORT. Connect New Nissan LEAF to your PC or smartphone with Carwings Intelligent Navigation System: activate charging, preset the air con or plan your eco-route at a distance - and compare your eco-driving skills with a global community of LEAF owners too! Carwings will help you to maximise your energy and get the most out of LEAF's range.



DRIVING RANGE
Check you have enough range for your next journey without needing to top up.



NEARBY STATIONS
Find the nearest charging station while you're on the road.



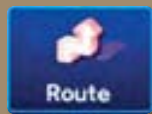
ENERGY INFORMATION
Keep an eye on your energy consumption at all times.



UPDATE STATIONS
Instantly update Carwings with newly installed charging points.



CHARGING TIMER
Set the charging time start in your car, on your smartphone or PC. You can preset the air con or heating too.



ECO-ROUTING
Eco-routing will help you to maximise your range by planning the most energy efficient route.



PC PLANNING
Plan your trip on your PC or smartphone and send it to your Nissan LEAF.



CHARGING STATIONS
Receive details of all the nearest charging stations while you're driving.



REACHABLE AREAS
One click on the steering wheel will reassure you can reach your destination.



REMOTE CHARGING
Activate charging from your PC or smartphone. Also check the battery charge level and reachable range. Nothing could be easier.



REMOTE AIR CON
Activate the air con from your PC or smartphone for a warm or chilled welcome.



ECO-DRIVING CHAMPION
Join a global community of eco-drivers and grow your own virtual forest.



TAKE CHARGE NOW'S THE TIME

CHOOSE YOUR CHARGE. Stop for a quick charge en route, fill up at home or plug in at work.



1. RAPID CHARGER

30 MINS. Go from 0-80% in approximately half an hour; rapid charging is the fastest battery boost available, making life easier and longer trips possible. The national network of rapid chargers is expanding all the time, for example at Nissan dealers and motorway service stations.



2. HOME CHARGING UNIT

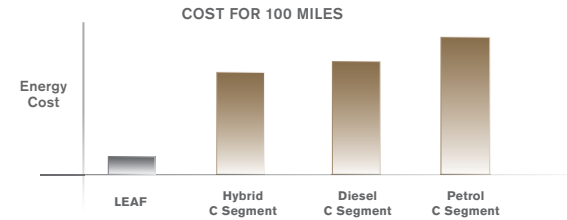
4-8 HOURS. Charge your Nissan LEAF overnight using a Home Charging Unit and reach full charge in approximately 8 hours, or even 4 hours with the optional 6.6kW on-board charger. Be sure to have your Home Charging Unit installed by an approved electrician.



3. CABLE + DOMESTIC PLUG

12 HOURS. Use your Nissan EVSE cable to charge your LEAF where you like – at public charging stations, at work or at home (so long as the domestic socket is on a professionally installed dedicated circuit). Providing 10A power, it will charge from empty to full in approximately 12 hours.

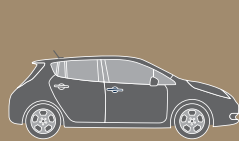
LEAF offers an extremely competitive cost of ownership package.



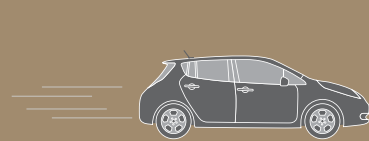
www.nissan-leaf.co.uk



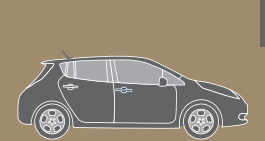
Wake up to a full 'tank'. All charged up and remotely pre-heated or cooled, LEAF is ready for action.



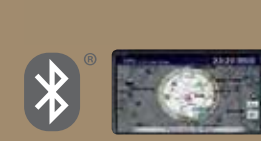
Whoosh! Nissan LEAF has no gears and has 100% available torque straightaway for a smooth, responsive and near-silent getaway.



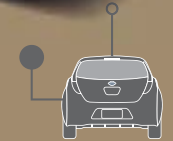
Enjoy zero emissions driving for less with zero VED, zero Benefit-In-Kind until 2015 and zero London Congestion Charge.



Thanks to its regenerative brakes, Nissan LEAF charges everytime you slow down. Red lights are your new best friend.



Take that important call with Bluetooth*, then run those errands.



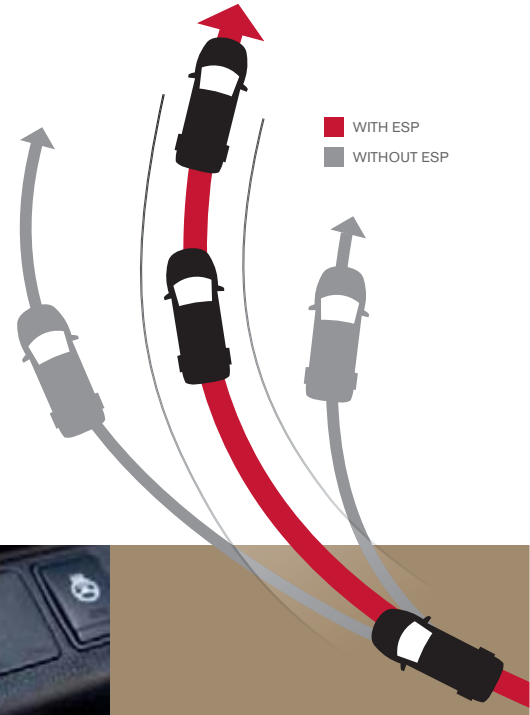
Just another day of zero emissions driving with LEAF. No petrol, no emissions. Back home, time to charge up during off-peak hours while sleeping.



AIRBAGS. Nissan's Advanced Airbag System includes dual-stage front airbags with seat belt sensors, front seat-mounted side impact airbags and roof-mounted curtain side impact airbags for front and rear seats.

ARRIVE SAFELY

A PROTECTED ENVIRONMENT. Unsurprisingly, New Nissan LEAF is equipped with all the latest safety and security equipment.



AVM. The 360° Around View Monitor helps you park safely and easily. Thanks to 4 wide-angled cameras, you can view your surroundings from a variety of angles including front & side, back & side and from above.



LED LIGHTS. The xenon-like performance of Nissan LEAF's LED lights are designed to brighten up your darkest moments while using half the energy of halogens.



ESP. The Electronic Stability Program keeps you in control. It senses the car's handling limits and, if needs be, reduces engine power or applies the brakes to avoid wheel spin.

[REQUEST A TEST DRIVE](#)





ADD A PERSONAL TOUCH

NISSAN GENUINE ACCESSORIES. From chrome accents to illuminations, clever organisers to wow-factor wheels - customise your LEAF to suit you.

- 1) Wind deflectors
- 2) Chrome mirror caps
- 3) Chrome door sill strips
- 4) 17" alloy wheels
- 5) Chrome foglamp rings
- 6-8) Floor mats, front & rear



9) Illuminated entry guard
10) Charging port lid cover

11) Cargo organiser
12) Centre console insert

13) 16" accessory alloy wheel
14) Soft trunkliner - compatible for LEAF with and without BOSE® Sound System.

COLOURS

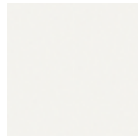
COLOUR YOUR ENERGY



Pearl Black - **Z11**



Universal Silver metallic - **KY0**



Arctic White solid - **326**



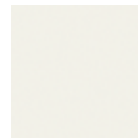
Gun Metal metallic - **KAD**



Magnetic Red metallic - **NAJ**



Mineral Blue metallic - **RBJ**



Pearl White - **QAB**

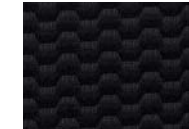
www.nissan-leaf.co.uk

TRIMS

TAILOR YOUR TRIMS



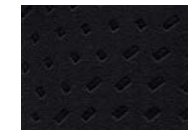
BLACK
woven type fabric*
Visia



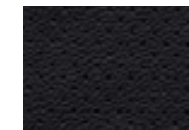
LIGHT GREY
suede effect fabric*
Acenta



BLACK
suede effect fabric*
Acenta

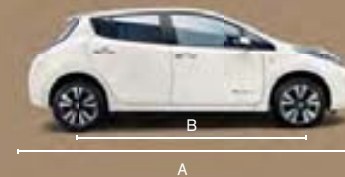


BLACK
leather**
Tekna



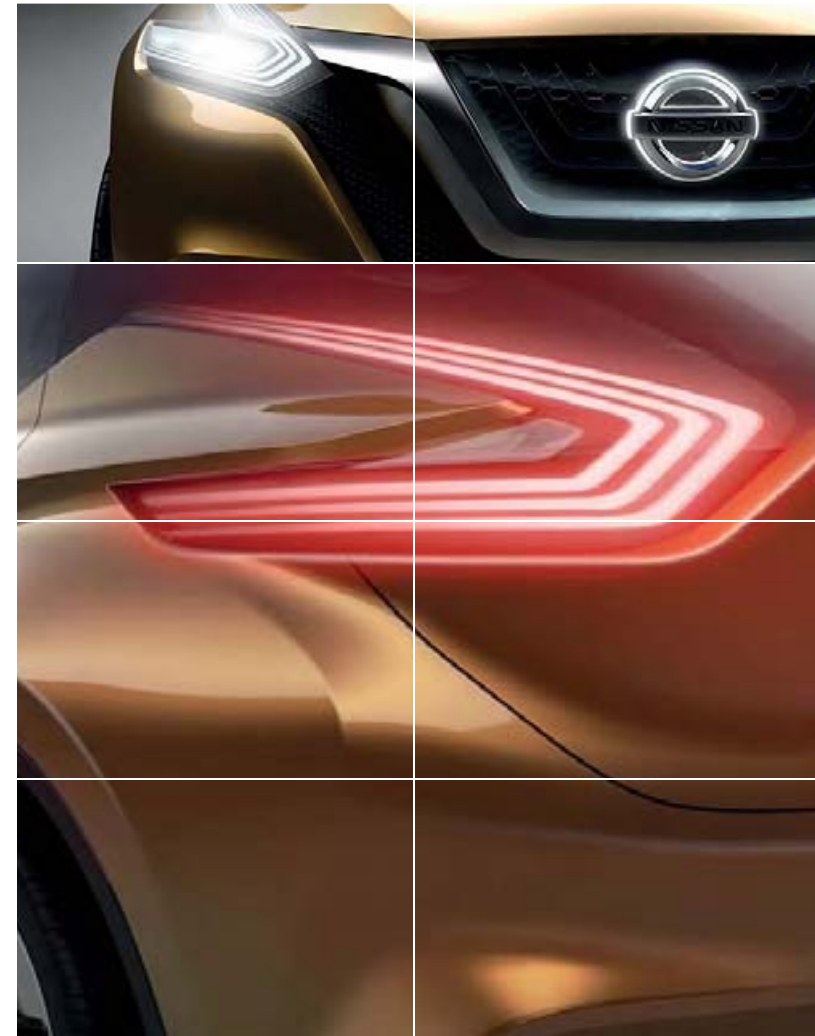
*Bio Fabric
** Some parts of leather seats may contain artificial leather

DIMENSIONS



A: Overall length: 4445mm
B: Wheelbase: 2700mm
C: Overall width: 1770mm
D: Overall height: 1550mm





AT NISSAN, YOU BRING OUT THE BEST IN US.

You spark our imagination. You provoke our creativity. You inspire us to change the rules and innovate. And at Nissan, innovation is not just about additions and extensions, it's about crossing the line to reinvent the status quo. It's about developing unexpected solutions to satisfy your wildest and most pragmatic desires. At Nissan, we design cars, accessories and services that break the mould - making the practical exciting and the exciting practical, to offer you a more exhilarating driving experience everyday.



NISSAN LEAF OFFERS YOU:

5-YEAR / 60,000 MILES WARRANTY ON ALL EV DEDICATED COMPONENTS AND 3-YEAR / 60,000 MILES FOR STANDARD COMPONENTS

**12-YEAR ANTI-CORROSION WARRANTY
18,000 MILES / 12 MONTHS SERVICE INTERVALS**

Nissan LEAF lithium-ion battery state of health warranty protects against battery capacity loss (less than 9 bars out of 12) as shown on the LEAF's capacity gauge for a period of 5 years / 60,000 miles.





SWITCH TO THE ELECTRIC SIDE OF DRIVING
THE PLUG-IN AND GO GUIDE TO NISSAN LEAF

[REQUEST A TEST DRIVE](#)



POWER TO YOU

AT WORK

CHARGE & GO: FLEET CHARGING SOLUTIONS BY BRITISH GAS

Fleet or Business user? Whether it's a simple wallbox for your workplace, multiple floor-standing chargers, or rapid chargers, British Gas will assess your fleet's operations and develop the most optimal charging solution for it.

Please visit www.britishgas.co.uk/business/electric-vehicles for more information and prices on EV fleet charging solutions.



POWER TO YOU

ON THE GO

RAPID CHARGERS

LEAF can go from 0-80% charged in just 30 minutes using one of Nissan's Rapid Chargers. With a LEAF you'll have access to the number one rapid charger network in the UK. It covers the majority of motorway service stations – so you'll never be far away from your next charge – ideal for longer journeys.

0-80% CHARGE – APPROX. 30 MINS



OTHER PUBLIC CHARGE POINTS

Pull up and plug in at one of the many thousands of charge points around the UK. See the where to charge section for more information.

0-100% CHARGE – APPROX. 4 HRS

(Approx. 4 hrs with optional 6.6 kW on-board charger. 8 hrs with the standard 3.3 kW on board charger).



Fuel consumption figures for Nissan LEAF – CO₂ while driving: 0. MPG: N/A. *From 2p per mile is based on (i) overnight electricity costs (British Gas standard tariff rates for a customer paying by direct debit as at 1 May 2014, assuming seven hours of charging at the night rate and one hour on the day rate), and (ii) a range of up to 124 as per full charge (assuming 95% efficiency). Actual consumption and range may vary due to driving style, road condition, air conditioning and other factors outside our control. Daily standing charge of 26p also applies. **Exemption is subject to registration with TFL and a £10 annual fee. London Congestion Charge only. †370 litres of boot space is enjoyed on the Visia and Acenta Models while the Tekna has 355 litres of boot space due to the BOSE™ Subwoofer positioning. †Emergency/occasional charging only. Nissan recommends that a domestic socket should be on a dedicated circuit. Home charging unit recommended for regular charging. Model shown is LEAF Tekna, 80 kW AC electric motor. †As of October 2014. Nissan Motor (GB) Ltd, The Rivers Office Park, Denham Way, Rickmansworth, Hertfordshire WD3 9YS.

99099-54160

WHERE TO CHARGE

The charge point network is growing rapidly as more businesses and individuals switch to the electric side. Currently there are over 7,000 charging points across the UK[†], so you can be safe in the knowledge that there are more charging options than ever when on longer journeys.

THE CHARGE POINT MAP

Public charge points are located across the UK, on streets, motorway services, large stores such as IKEA, and at Nissan dealerships.

Find them easily on the Nissan Charge Point Map at nissan.co.uk/charging-map

NAVIGATE WITH CARWINGS

The clever on-board Carwings system will help navigate you to the nearest charger. Carwings is also available online so you can plan your journey before you depart.

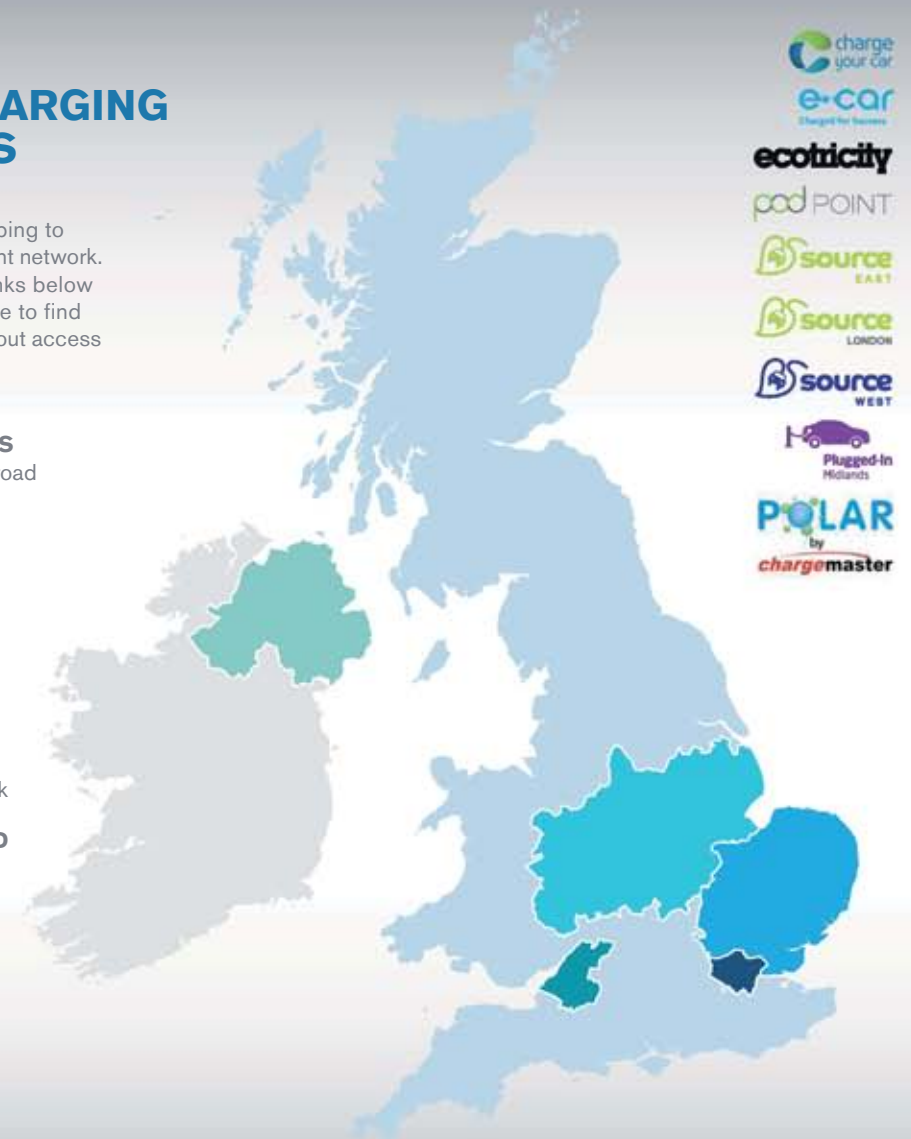
Log-in at nissan.co.uk/Carwings



PUBLIC CHARGING NETWORKS

Many providers are helping to grow the UK charge point network. Check out the useful links below and enter your postcode to find out more information about access in your area.

- UK-WIDE NETWORKS**
ecotricity.co.uk/for-the-road
chargeyourcar.org.uk
pod-point.com
polarnetwork.com
- LONDON**
sourcelondon.net
- EAST ENGLAND**
sourceeast.net
- MIDLANDS**
pluggedinmidlands.co.uk
- NORTHERN IRELAND**
ecarni.com
- SOUTH WEST**
sourcewest.net



95% OF LEAF OWNERS RECOMMEND NISSAN LEAF TO OTHERS

New side, new rules. On the electric side of driving you'll not only enjoy great savings, but a dynamic drive that sets the 100% electric Nissan LEAF apart from the competition. A few reasons LEAF owners recommend include:

- Low running costs from just 2p* a mile
- Zero emissions while driving LEAF equals zero road tax and zero congestion charge** for you
- Charge, heat, and cool your LEAF right from your smartphone thanks to its innovative Carwings technology
- With dynamic acceleration, instant torque and speeds to match, the LEAF is a quiet ride that doesn't compromise
- LEAF comfortably seats up to five people
- No need to travel light with 370 litres[†] of boot space



POWER TO YOU

AT HOME

HOME CHARGING UNIT FROM BRITISH GAS

Never fill up at a petrol station again. With a home charging unit from British Gas, charging at home is quick, simple and safe. Fill up conveniently overnight in eight or even four hours.

Please visit www.britishgas.co.uk/business/electric-vehicles for more information.

0-100% CHARGE – APPROX. 4 HRS

(Approx. 4 hrs with optional 6.6 kW on-board charger. 8 hrs with the standard 3.3 kW on board charger.)

DOMESTIC PLUG

With your EVSE cable any 3-pin socket¹ can turn into your own personal petrol station providing it has a 13 Amp power source. Ideal for top-ups on the go or overnight.

0-100% CHARGE – APPROX. 12 HRS



Fuel consumption figures for Nissan LEAF – CO₂ while driving: 0. MPG: N/A. *From 2p per mile is based on (i) overnight electricity costs (British Gas standard tariff rates for a customer paying by direct debit as at 1 May 2014, assuming seven hours of charging at the night rate and one hour on the day rate), and (ii) a range of up to 124 as per full charge (assuming 95% efficiency). Actual consumption and range may vary due to driving style, road condition, air conditioning and other factors outside our control. Daily standing charge of 26p also applies. **Exemption is subject to registration with TFL and a £10 annual fee. London Congestion Charge only. †370 litres of boot space is enjoyed on the Visia and Acenta Models while the Tekna has 355 litres of boot space due to the BOSE™ Subwoofer positioning. ¹Emergency/occasional charging only. Nissan recommends that a domestic socket should be on a dedicated circuit. Home charging unit recommended for regular charging. Model shown is LEAF Tekna, 80 kW AC electric motor. †As of October 2014. Nissan Motor (GB) Ltd, The Rivers Office Park, Denham Way, Rickmansworth, Hertfordshire WD3 9YS.



Innovation
that excites

NISSAN LEAF



[Contents](#) | [Exterior design](#) | [Interior design](#) | [Technology & Performance](#) | [Style & Accessories](#) | [Plug-in and Go Guide](#) | [Technical Specifications](#) | [Price List](#)

[Print](#) | [Close](#)

[REQUEST A TEST DRIVE](#)



BE A PART OF THE ELECTRIC REVOLUTION

Over 145,000 owners of the Nissan LEAF are now making the most of zero emission driving across the globe.

Launched in 2011 and now built in Britain, the 100% Electric Nissan LEAF is the world's best selling Electric Vehicle. Are you ready to go Electric?



VISIA

5 DOOR
80 KW AC ELECTRIC MOTOR
SINGLE GEAR AUTO

AUDIO AND TECHNOLOGY

- Audio centre with 1CD, Bluetooth, iPod, USB
- 4 speakers
- Steering wheel mounted controls
- Regenerative braking system

COMFORT AND CONVENIENCE

- Start / stop power button
- Remote charging port opener
- Electric mirror adjustment
- Charging port illumination
- Rear wiper
- Front & rear power windows
- Eco drive mode
- Hill start assist
- Auto air conditioning (dial type)
- EVSE cable - 3 Pin, 10 Amp

EXTERIOR

- Intelligent key
- Halogen headlamps
- Fog lamps
- Thatcham alarm
- Rapid Charge Port (allowing 50kW DC charging)

SAFETY

- ABS & EBD
- 6 airbags: front, side & curtain
- Vehicle Dynamic Control (VDC) and Traction Control System (TCS)
- 2 front 3 point seat belts with height adjusted, double pretensioner*, load limiter and reminder
- 3 rear 3 point seat belts, ISOFIX x2
- Immobiliser
- EVSE charging cable locking
- Instant Mobility System (IMS)
- Vehicle Sound for Pedestrians (VSP)
- Daytime running lights
- Tyre Pressure Monitoring System
- Safety Kit (Warning Triangle, First Aid Kit and 2 High Visibility Jackets)

STYLING

- Black woven fabric trim
- Chromed door handles
- Black coloured wing mirrors
- 16" steel wheels with wheel trims

*Driver side only. Simple pretensioner for ASSIST side

OPTIONS AT EXTRA COST

- Metallic paint
- Pearlescent paint
- Arctic White solid paint
- 6.6kW on-board charger* (includes the 7 pin mode 3 type 3 cable AND the 3 pin EVSE cable)
- NissanConnect with reversing camera

VISIA+

5 DOOR
80 KW AC ELECTRIC MOTOR
SINGLE GEAR AUTO

ADDITIONAL TO VISIA GRADE

AUDIO AND TECHNOLOGY

- NissanConnect with reversing camera

EXTERIOR

- Privacy glass
- 16" alloy wheels
- Body coloured and electric folding wing mirrors

OPTIONS

- Metallic paint
- Pearlescent paint
- Arctic White solid paint
- 6.6kW on-board charger* (includes the 7 pin mode 3 type 3 cable AND the 3 pin EVSE cable)

*Allows home and public charging at 32 Amp

ACENTA

5 DOOR
80 KW AC ELECTRIC MOTOR
SINGLE GEAR AUTO

ADDITIONAL TO VISIA+ GRADE

AUDIO AND TECHNOLOGY

- Nissan CARWINGS telematics system
- 7" colour screen
- 6 speakers
- Colour reversing camera
- Cruise control or speed limiter

COMFORT AND CONVENIENCE

- B drive mode (enhances regenerative braking)
- Energy efficient auto air conditioning (digital type)
- Auto wipers & lights

EXTERIOR

- Halogen headlamps with 'Follow Me Home' function

*Allows home and public charging at 32 Amp

STYLING

- Black or stone suede-effect trim

OPTIONS AT EXTRA COST

- Metallic paint
- Pearlescent paint
- Arctic White solid paint
- 6.6kW on-board charger* (includes the 7 pin mode 3 type 3 cable AND the 3 pin EVSE cable)
- Solar cell spoiler

ACENTA +

5 DOOR
80 KW AC ELECTRIC MOTOR
SINGLE GEAR AUTO

ADDITIONAL TO ACENTA GRADE

STYLING

- 17" Auttech wheels

EQUIPMENT

- 6.6kW on-board charger (includes the 7 pin mode 3 type 3 cables AND the 3 pin EVSE cable)

OPTIONS AT EXTRA COST

- Metallic paint
- Pearlescent paint
- Arctic White solid paint

TEKNA

5 DOOR
80 KW AC ELECTRIC MOTOR
SINGLE GEAR AUTO

ADDITIONAL TO ACENTA GRADE

AUDIO AND TECHNOLOGY

- BOSE 7 speakers system with subwoofer
- 360° Around View Monitor

COMFORT AND CONVENIENCE

- Heated front & rear seats
- Heated steering wheel
- Heated exterior mirrors

STYLING

- Full black leather trim**
- 17" alloy wheels

EXTERIOR

- LED headlamps with 'Follow Me Home' function

*Allows home and public charging at 32 Amp

**Some parts of leather seats may contain artificial leather, please contact your dealer for full details.

NEW LEAF

| | | 80kW AC Electric Motor | 80kW AC Electric Motor |
|-----------------------------------|---------------------------------|------------------------|-------------------------|
| MODEL | | LEAF | |
| Body type | 5 door hatchback | | |
| Available grades | Visia, Visia+, Acenta, Tekna | | Acenta + |
| Seating capacity | persons | 5 | |
| ENGINE | | | |
| Engine code | EM57 | | |
| Elec. Motor type | AC synchronous | | |
| Max. engine power ¹⁾ | kW(PS)/min-1 | 80(109)/3008-10000rpm | |
| Max. torque ¹⁾ | Nm/min-1 | 254 /0-3008rpm | |
| max RPM | 10,500 | | |
| Energy type | Electricity | | |
| BATTERY | | | |
| Type | Laminated lithium ion | | |
| Voltage | V | 360 | |
| Capacity | kWh | 24kWh, 48modules | |
| Number of cells | 192 | | |
| CHARGER | | | |
| On-board charger | kW | 3.6kW, 6.6kW (option) | 3.6kW, 6.6kW (standard) |
| Rapid Charging Capability | kW | 50 | |
| Charging cable | 6m long - 3.0kg | | |
| DRIVE TRAIN | | | |
| Clutch type (AT) | Automatic | | |
| Transmission code | RE1F61B | | |
| Gear ratio | Single Speed Gear Reduction | | |
| Final drive ratio (AT) | 8.1938 | | |
| Driven wheels | Front | | |
| CHASSIS | | | |
| Suspension front | Independent Mac Pherson strut | | |
| rear | Torsion beam axle | | |
| Steering | Electric power assisted | | |
| Braking system | CLZ31VE 283x28t | | |
| | -- | AD11VE+DS17 292x16t | |
| Stability control system (option) | ESP (Standard) | | |
| Wheel size (option) | 6.5J 16 O/S:40 / 6.5J 17 O/S:45 | | 6.5J 17 O/S:45 |
| Tyre size (option) | 205/55R16 / 215/50R17 | | 215/50R17 |
| Tyre Make and model | 17" Autech blue alloy wheels | | |

- 1) In accordance with 1999/99/EC.
 2) Figures in accordance with EC Directive. Kerb weight condition is without driver and including coolant, oils, fuel, spare wheel and tools. Pay load will be reduced depending on the options and/or accessories installed.
 3) In accordance with UN/ECE Regulation 101
 4) Figures shown are with driver + 4 passengers and luggages and max. kerb weight.

NEW LEAF

| | | 80kW AC Electric Motor | |
|--|---|----------------------------------|--|
| MODEL | | LEAF | |
| Body type | 5 door hatchback | | |
| Available grades | Visia, Visia+, Acenta, Tekna, LIMITED EDITION | | |
| WEIGHTS & DIMENSIONS | | | |
| Kerb weight min./max. ²⁾ Visia Grade | kg | 1474/1503 | |
| Kerb weight min./max. ²⁾ Acenta Grade | kg | 1493/1519 | |
| Kerb weight min./max. ²⁾ Tekna Grade | kg | 1512/1541 | |
| Gross Vehicle Weight | kg | 1,945 | |
| Max. pay load ²⁾ | kg | 395 | |
| Max axle load FR ²⁾ | kg | 1,030 | |
| Max axle load RR ²⁾ | kg | 960 | |
| Overall length | mm | 4445 | |
| Overall width | mm | 1770 | |
| Width, door mirror to door mirror | mm | 1967 | |
| Overall height | mm | 1545 / 1550 | |
| Wheelbase | mm | 2700 | |
| FR Overhang | mm | 952 | |
| RR Overhang | mm | 788 | |
| Track front | mm | 1540 / 1530 | |
| Track rear | mm | 1535 / 1525 | |
| Min. Ground clearance | mm | 100 / 108 (rear tyre deflector) | |
| Turning radius | m | 5.2 / 5.4 | |
| Towing capacity | kg | N/A | |
| Roof load capacity | kg | N/A | |
| Luggage capacity (VDA) | L | 370 (std) / 355 (bose) | |
| Luggage capacity (until roof) | L | 911.6 (Lugg Floor to Head Liner) | |
| max. with folded seats (VDA) | L | 720L (to top of seats) | |
| Cd | | 0.291 (16") / 0.289 (17") | |
| PERFORMANCE | | | |
| Electricity consumption ³⁾ | Wh/km | 150 | |
| Autonomy (NEDC) ³⁾ | km/miles | 199 / 124 | |
| CO2 mass emission (Combined) | g/km | 0 | |
| Max. speed | mph | 16inch 87 mph 17inch 89 mph | |
| Acceleration (0 - 62 mph) | sec | 11.5 | |
| Min. turning circle (kerb to kerb) | m | 16inch 10.4 17inch 10.8 | |

- 1) In accordance with 1999/99/EC.
 2) Figures in accordance with EC Directive. Kerb weight condition is without driver and including coolant, oils, fuel, spare wheel and tools. Pay load will be reduced depending on the options and/or accessories installed.
 3) In accordance with UN/ECE Regulation 101
 4) Figures shown are with driver + 4 passengers and luggages and max. kerb weight.

OUR PROMISE. YOUR EXPERIENCE.



There's no time limit on how long you will benefit from our promises. If you are a Nissan Customer, we will look after you. **That is our Promise.**

 **FREE COURTESY CAR**
YOU want to stay on the road when your Nissan is in for a service or repair.

NISSAN PROMISE to keep you mobile free of charge whether you need a courtesy car, or just a lift.

 **FREE VIDEO HEALTH CHECK**
YOU want to understand what is going on with your car's service.

NISSAN PROMISE a free vehicle health check and we can even show you any work that might need doing with your own vehicle assessment video.

 **SERVICE PRICE MATCH**
YOU want the best value for money when it comes to service and repair.

NISSAN PROMISE simple Fixed Price Servicing, and will price match like-for-like competitor written quotes within 10 miles of your local dealer.

 **CONTINUOUS ROADSIDE ASSISTANCE**
YOU want the peace of mind you get from our quality service to go even further.

NISSAN PROMISE to provide you with Roadside Assistance for free every time you service your car with us.

 **HERE FOR YOU**
YOU want your problems resolved quickly.

NISSAN PROMISE to propose a resolution to any problem within two working days.

 **TEST DRIVE YOUR CHOICE**
YOU want to test drive the latest Nissan model, engine and gearbox you're interested in buying.

NISSAN PROMISE that's what you'll get when you pre-book your test drive either online or through our customer service centre.

Just call 0330 123 1231.

Please visit nissan.co.uk/promise. Terms and conditions apply.





[Contents](#) | [Exterior design](#) | [Interior design](#) | [Technology & Performance](#) | [Style & Accessories](#) | [Plug-in and Go Guide](#) | [Technical Specifications](#) | [Price List](#) | [Print](#) | [Close](#)
[Leaf Model and option prices](#) | [CO2 emissions](#)

[REQUEST A TEST DRIVE](#)



LEAF 24kW MY14 & MY15

| Doorplan | Grade | Engine | Transmission | Basic Price | VAT | Total Retail | On The Road Price | On The Road Price after Government Incentive* |
|----------|---------|------------------------|------------------------------|-------------|----------|--------------|-------------------|---|
| 5 door | VISIA | 80kW AC Electric Motor | Single Reduction Gear (Auto) | 21,445.83 | 4,289.17 | 25,735.00 | 25,790.00 | 20,790.00 |
| | ACENTA | 80kW AC Electric Motor | Single Reduction Gear (Auto) | 23,445.83 | 4,689.17 | 28,135.00 | 28,190.00 | 23,190.00 |
| | ACENTA+ | 80kW AC Electric Motor | Single Reduction Gear (Auto) | 24,154.17 | 4,830.83 | 28,985.00 | 29,040.00 | 24,040.00 |
| | TEKNA | 80kW AC Electric Motor | Single Reduction Gear (Auto) | 24,862.50 | 4,972.50 | 29,835.00 | 29,890.00 | 24,890.00 |

Basic and Total Retail includes delivery to the dealership and number plates. On the road price includes £55 government first registration fee.

* Government applied Plug-in Car Grant (referred to as 'Government Incentive') of 25% up to a maximum of £5,000 can be applied to LEAF sales.

LEAF 30kW MY16

| Doorplan | Grade | Engine | Transmission | Basic Price | VAT | Total Retail | On The Road Price | On The Road Price after Government Incentive* |
|----------|--------|------------------------|------------------------------|-------------|----------|--------------|-------------------|---|
| 5 door | ACENTA | 80kW AC Electric Motor | Single Reduction Gear (Auto) | 24,529.17 | 4,905.83 | 29,435.00 | 29,490.00 | 24,490.00 |
| | TEKNA | 80kW AC Electric Motor | Single Reduction Gear (Auto) | 26,195.83 | 5,239.17 | 31,435.00 | 31,490.00 | 26,490.00 |

LEAF FLEX 24kW MY14 & MY15 - (Battery Leasing)

| Doorplan | Grade | Engine | Transmission | Basic Price | VAT | Total Retail | On The Road Price | On The Road Price after Government Incentive* |
|----------|--------------|------------------------|------------------------------|-------------|----------|--------------|-------------------|---|
| 5 door | VISIA FLEX | 80kW AC Electric Motor | Single Reduction Gear (Auto) | 17,279.17 | 3,455.83 | 20,735.00 | 20,790.00 | 15,790.00 |
| | ACENTA FLEX | 80kW AC Electric Motor | Single Reduction Gear (Auto) | 19,029.17 | 3,805.83 | 22,835.00 | 22,890.00 | 17,890.00 |
| | ACENTA+ FLEX | 80kW AC Electric Motor | Single Reduction Gear (Auto) | 19,987.50 | 3,997.50 | 23,985.00 | 24,040.00 | 19,040.00 |
| | TEKNA FLEX | 80kW AC Electric Motor | Single Reduction Gear (Auto) | 20,695.83 | 4,139.17 | 24,835.00 | 24,890.00 | 19,890.00 |

LEAF FLEX 30kW MY16 - (Battery Leasing)

| Doorplan | Grade | Engine | Transmission | Basic Price | VAT | Total Retail | On The Road Price | On The Road Price after Government Incentive* |
|----------|-------------|------------------------|------------------------------|-------------|----------|--------------|-------------------|---|
| 5 door | ACENTA FLEX | 80kW AC Electric Motor | Single Reduction Gear (Auto) | 20,362.50 | 4,072.50 | 24,435.00 | 24,490.00 | 19,490.00 |
| | TEKNA FLEX | 80kW AC Electric Motor | Single Reduction Gear (Auto) | 22,029.17 | 4,405.83 | 26,435.00 | 26,490.00 | 21,490.00 |

Basic and Total Retail includes delivery to the dealership and number plates. On the road price includes £55 government first registration fee.

* Government applied Plug-in Car Grant (referred to as 'Government Incentive') of 25% up to a maximum of £5,000 can be applied to LEAF sales.

Price excludes obligatory monthly battery rental

| Monthly Battery Rental including VAT | | Annual Mileage* | | | | |
|--------------------------------------|--------------------|-----------------|-------------|--------------|--------------|--------------|
| | | 7,500 miles | 9,000 miles | 10,500 miles | 12,000 miles | 15,000 miles |
| Contract Term* | 36 months and over | £70 | £77 | £85 | £93 | £109 |
| | 24 months | £80 | £87 | £95 | £103 | £119 |
| | 12 months | £90 | £97 | £105 | £113 | £129 |

* Additional combinations of contract term and annual mileage are available.

Monthly Battery Rental includes Roadside Assistance for all breakdowns. Battery Lease contract provided by RCI Financial Services Ltd t/a Nissan Finance and is subject to status. Excess mileage is charged at £7.50 incl VAT/100 miles or part thereof. Terms and conditions apply. Please contact your local Nissan dealer for further details

LEAF OPTIONS

| | VISIA | VISIA+ | ACENTA | TEKNA | Basic | VAT | Total |
|--|----------------------------------|----------------------------------|----------------------------------|----------------------------------|---------------|--------------|------------|
| Metallic paint | <input type="radio"/> | <input type="radio"/> | <input type="radio"/> | <input type="radio"/> | 437.50 | 87.50 | 525 |
| Pearlescent paint | <input type="radio"/> | <input type="radio"/> | <input type="radio"/> | <input type="radio"/> | 604.17 | 120.83 | 725 |
| Arctic White paint | <input type="radio"/> | <input type="radio"/> | <input type="radio"/> | <input type="radio"/> | 208.33 | 41.67 | 250 |
| Rear roof spoiler with solar cells | | | <input type="radio"/> | <input type="radio"/> | 250.00 | 50.00 | 300 |
| Rapid Charge Port (allowing 50kW DC charging) | <input checked="" type="radio"/> | <input checked="" type="radio"/> | <input checked="" type="radio"/> | <input checked="" type="radio"/> | - | - | - |
| NissanConnect with rear view camera | | <input checked="" type="radio"/> | | | - | - | - |
| 6.6 kW on board charger* (allowing home and public charging at 32AMP) | <input type="radio"/> | <input type="radio"/> | <input type="radio"/> | <input type="radio"/> | 958.33 | 191.67 | 1150 |
| Protection Pack (Velour carpet mats, Mudguards - front and rear & Trunk Mat (with or without BOSE)) | <input type="checkbox"/> | <input type="checkbox"/> | <input type="checkbox"/> | <input type="checkbox"/> | 157.50 | 31.50 | 189 |
| Design Pack Chrome/coloured mirror caps, Chrome strip door sills | <input type="checkbox"/> | <input type="checkbox"/> | <input type="checkbox"/> | <input type="checkbox"/> | 249.17 | 49.83 | 299 |
| Alloy Wheel x 4** | <input type="checkbox"/> | <input type="checkbox"/> | <input type="checkbox"/> | | 693.32 | 138.63 | 832 |
| Dog Guard | <input type="checkbox"/> | <input type="checkbox"/> | <input type="checkbox"/> | <input type="checkbox"/> | 190.00 | 38.00 | 228 |
| Tailgate entry guard | <input type="checkbox"/> | <input type="checkbox"/> | <input type="checkbox"/> | <input type="checkbox"/> | 86.67 | 17.33 | 104 |
| Chrome trunk finisher | <input type="checkbox"/> | <input type="checkbox"/> | <input type="checkbox"/> | <input type="checkbox"/> | 120.00 | 24.00 | 144 |
| Rear parking sensors | <input type="checkbox"/> | <input type="checkbox"/> | <input type="checkbox"/> | <input type="checkbox"/> | 314.17 | 62.83 | 377 |
| Hologram entry guard (set of 2) | <input type="checkbox"/> | <input type="checkbox"/> | <input type="checkbox"/> | <input type="checkbox"/> | 146.67 | 29.33 | 176 |
| Seat covers | <input type="checkbox"/> | <input type="checkbox"/> | <input type="checkbox"/> | <input type="checkbox"/> | 250.00 | 50.00 | 300 |
| Coloured mirror caps* | <input type="checkbox"/> | <input type="checkbox"/> | <input type="checkbox"/> | <input type="checkbox"/> | 137.50 | 27.50 | 165 |

Dealer fit option prices include fitting but are only a guide. Please check with your local Nissan dealer for exact prices.

*Available in: Red, Black, White, Grey, Purple, Orange, Carbon Look, Chrome (Carbon Look + Chrome prices vary)

** Price excludes tyres

Optional - Standard - Optional Dealer Fit -

CO2 MASS EMISSIONS AND VEHICLE EXCISE DUTY

| Vehicle | Engine | Transmission | Body Style | Emission Level | CO ₂ Mass Emissions g/km | | 12 months VED | |
|---------|------------------------|------------------------------|------------|----------------|-------------------------------------|-------------|---------------|-------------|
| | | | | | ≤ 17" Alloys | ≥18" Alloys | ≤ 17" Alloys | ≥18" Alloys |
| LEAF | 80kW AC Electric Motor | Single Reduction Gear (Auto) | 5 door | EURO5 | 0 | | £0 | |

[REQUEST A TEST DRIVE](#)



NISSAN MOTOR (GB) LIMITED

The Rivers Office Park
Denham Way
Maple Cross
Rickmansworth
Hertfordshire
WD3 9YS

Visit our website at: www.nissan.co.uk

Part Number: 99999 54210

Prices effective from 1st October 2015 unless otherwise stated

Dealer stamp: