



MAZDA3

MAZDA3
ZOOM-ZOOM



We explore cities and winding country roads.

Corners hugged and throttles revved.

Windows down, radio loud, no particular place to go.

Always forward, defying the wind.

I am the embodiment of Jinba Ittai.

You, the heart behind the wheel.

We were always meant to connect,

like a horse and rider,

car and driver as one.

Together, we are stronger.

We have a bond that words alone cannot describe.

We never drive alone.

We drive together.



AWAKEN THE DRIVER IN YOU

When you drive a Mazda, you never drive alone. We believe when car and driver become one, driving becomes fun. The feeling of togetherness we call Jinba Ittai is part of Mazda's DNA. Guided by this philosophy, the human-centric approach of Mazda3 blends state-of-the-art design, SKYACTIV Technology and genuinely superior craftsmanship to deliver the best possible level of your driving experience. It's the Mazda way.



Model shown is Mazda3 Fastback 120ps Sport Nav in optional Machine Grey Metallic paint available at additional cost

D E S I G N



G R A B T H E W H E E L

Mazda3 is all about standing out of from the crowd in style. Displaying refined power, beauty and dynamism, its awarded KODO: Soul of Motion design gives it standout presence on the road. The exterior expresses an energetic tension and a sense of rhythmic motion that demands attention. The human-centric designed interior stands out both in terms of quality and craftsmanship, meaning driver and passengers are surrounded in comfort. Its impressive beauty and refined character are endorsed by the craft of TAKUMI-NURI, Mazda's high-quality painting technology, which achieves exceptional texture, vividness and depth in the signature Soul Red and Machine Grey metallic paints. Inside and out, the design of Mazda3 deepens the bond between car and driver.





A TRUE DRIVING EXPERIENCE

Mazda3 offers the driver a unique, stylish and spirited performance. Its aerodynamic body design delivers precision and agility, assuring a responsive and dynamic driving experience from the first ride. The rear design completes the flowing lines that connects the front of the vehicle to the rear. A sense of stability with composure and high quality are expressed. Its refined interior design adds both visual and tactile comfort, from the instrument cluster quality to the soft-touch materials. Guided by our human-centric design approach, the intelligently compartmented interior and the high-standard level of craftsmanship contributes to the overall charm of Mazda3, which brings the unique Jinba Ittai feeling to life.



LED SIGNATURE REAR LIGHTS



18" SILVER ALLOY WHEELS



LED HEADLIGHTS

Model shown is Mazda3 120ps Sport Nav with optional Machine Grey Metallic paint available at additional cost



HUMAN-CENTRIC INTERIOR



7" COLOUR TOUCH-SCREEN DISPLAY
Places information and entertainment at your fingertips.



ELECTRONIC PARKING BRAKE
Includes an auto-disengage function.



PREMIUM LIGHT STONE LEATHER
Available as an option on Sport Nav models. (Excludes 105ps Sport Nav models)

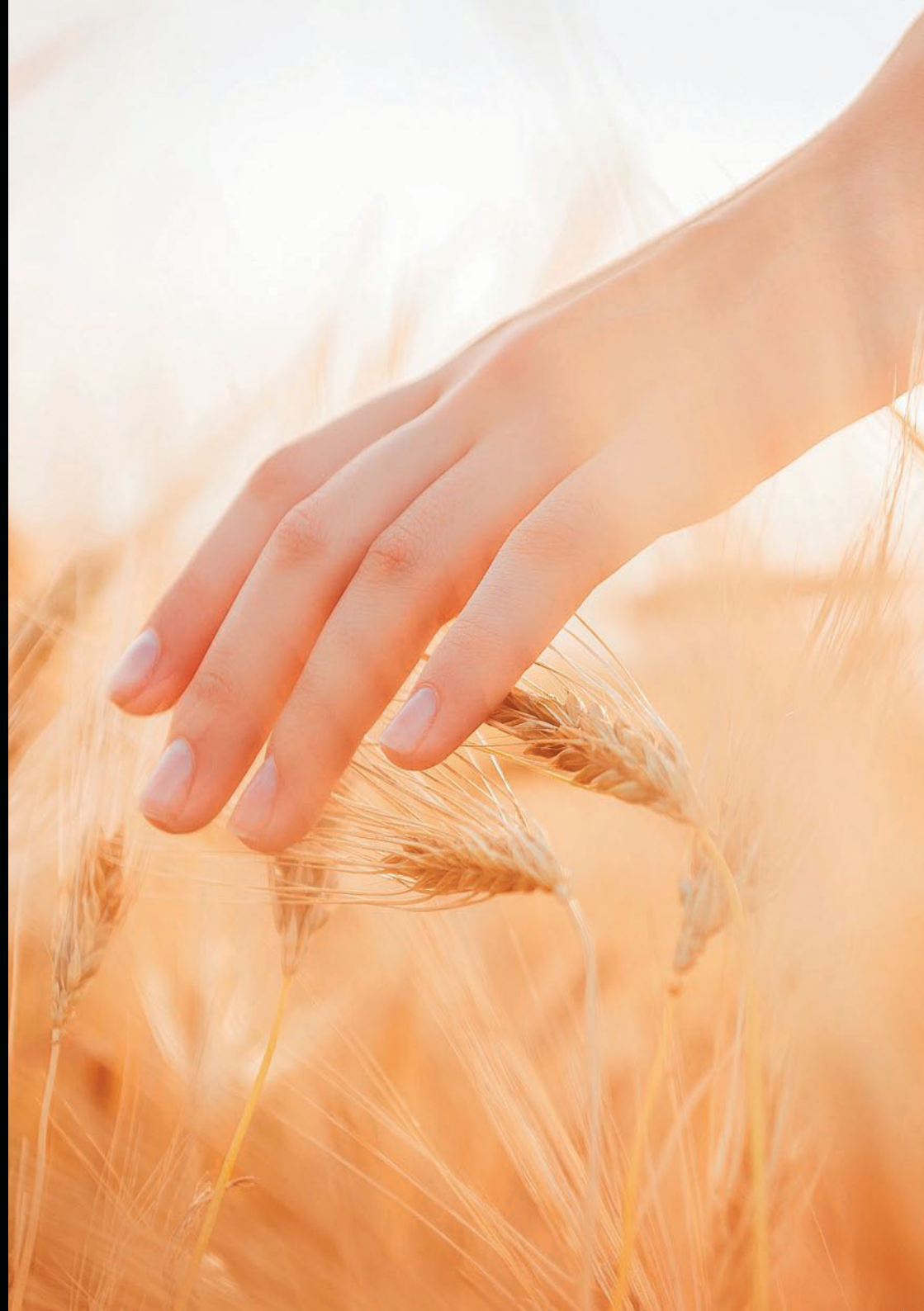
TECHNOLOGY



BE IN CHARGE

Experience the perfect combination of information, connectivity and entertainment in Mazda3. Standard across the range is MZD-Connect, an advanced infotainment and connectivity system that provides access to a range of features and applications. Connectivity is key in Mazda3 and via a compatible mobile device you can access thousands of internet radio stations from around the world, safely check and respond to text messages, and even keep up to date with Facebook and Twitter*. Enjoy listening to your favourite radio stations via DAB radio or stream your choice of music via a Bluetooth® connection. And all this is easily and safely controlled using the 7" colour touch-screen display and the intuitive Multimedia Commander, leaving you to concentrate on enjoying the drive.

* With compatible mobile device. Data usage and costs will vary. Please refer to the footnote under the Infotainment specification table for more information.



COLOUR ACTIVE DRIVING DISPLAY (COLOUR HEAD-UP DISPLAY)

The colour head-up display on Sport Nav models features Traffic Sign Recognition. Providing essential driving information in the driver's natural line of sight. Leaving you to concentrate on the road ahead.



LEATHER GEAR KNOB

The premium feel of crafted leather in the palm of your hand creates yet another memorable connection between you and your Mazda3.



MULTIMEDIA COMMANDER

Located between the driver and front passenger, the Multimedia Commander allows you to operate the infotainment and connectivity system with minimal effort. It includes a separate volume dial for easy adjustment.



DUAL-ZONE CLIMATE CONTROL AIR-CONDITIONING

Ensures that both driver and front passenger ride in comfort with individual climate control zones.

SKYACTIV TECHNOLOGY

SKYACTIV Technology is all about fuel economy, low emissions and making driving more fun. Embracing - engines, transmissions, chassis and body - it's an approach that completely reimagines the car from the ground up. Coupled with innovative technologies such as Mazda's i-stop and i-ELOOP, SKYACTIV Technology enables Mazda3 to deliver a unique mix of driving pleasure, balanced with outstanding environmental and safety performance.

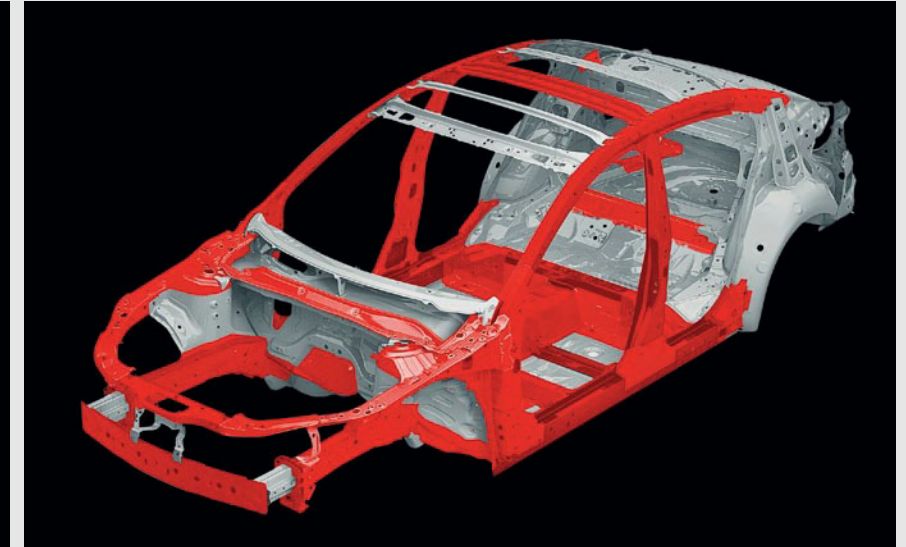


SKYACTIV BODY AND CHASSIS Rigid and lightweight, perfectly balanced and finely tuned - it's the fun-to-drive formula for pure exhilaration.



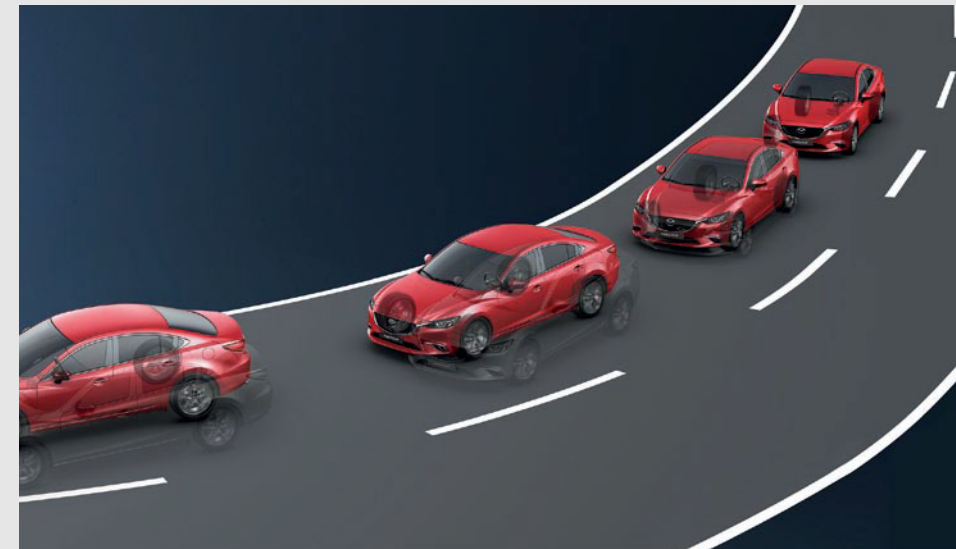
NEW BENCHMARKS FOR PERFORMANCE

Choose from either 120ps or 165ps SKYACTIV-G petrol engines, which deliver excellent fuel economy, blended with performance. Or the equally impressive SKYACTIV-D diesel engines available with either a 105ps or 150ps power output. All engines feature Mazda's innovative i-stop technology for superior fuel economy.



WHEN BODY MEETS SOUL

Outstanding crash protection is possible thanks to the SKYACTIV-Body which utilises lightweight high-tensile steel. The lightweight, ultra-strong and highly rigid body also contributes to improved fuel economy and a more rewarding and responsive drive.



MORE POWER TO YOUR WHEELS

G-Vectoring Control intelligently redistributes engine torque and drive power between wheels, shifting the vehicle's load balance toward the forward outer wheel when cornering. The result is a dramatic improvement to steering and handling performance, for a more comfortable and more confident drive.



PRECISE AND COMFORTABLE HANDLING

The lightweight SKYACTIV-Chassis offers the perfect balance of agility and stability with exceptional handling and ride comfort. Coupled with steering which responds predictably to driver input, it delivers that 'fun to drive' element you have come to expect from Mazda.

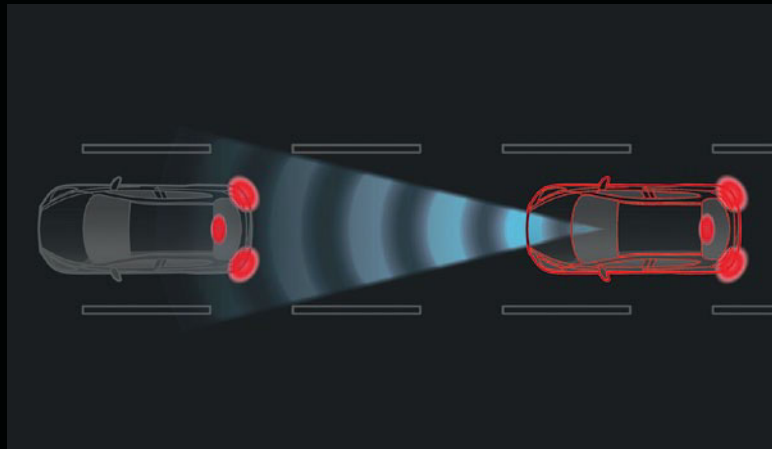
IT'S ALL ABOUT THE DRIVER

Car and driver as one. A unique feeling only Mazda drivers can truly understand. Mazda3's design and outstanding advanced technologies have been built around the driver and puts driver and car in perfect harmony so you can enjoy every mile. Experiencing the best of what Mazda3 has to offer is easier than ever thanks to the brilliantly designed i-ACTIVSENSE system. Providing you with generous levels of safety and comfort. Technologies that are specially designed to aid you when driving on overly populated streets or the open road, helping to avoid collisions or reduce their severity.



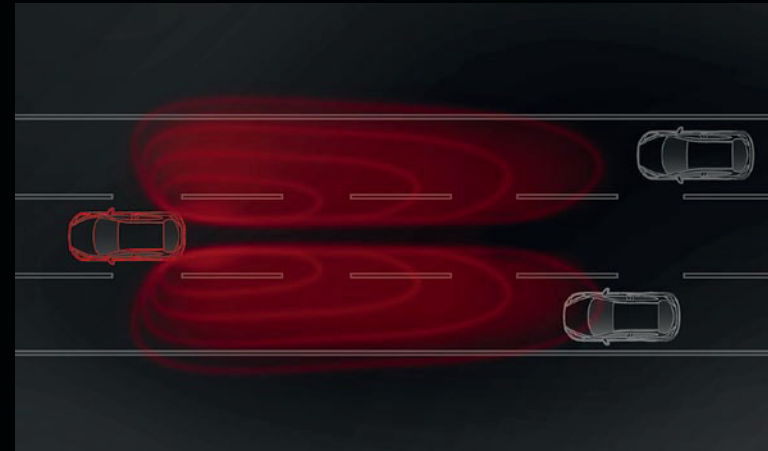
ADVANCED SAFETY TECHNOLOGY

Mazda3 contains an array of intelligent safety technologies that are designed to help you relax and enjoy the drive. This is thanks to i-ACTIVSENSE technologies, an intelligent collection of safety features that use sensors and cameras to monitor your surroundings and provide protection and convenience.



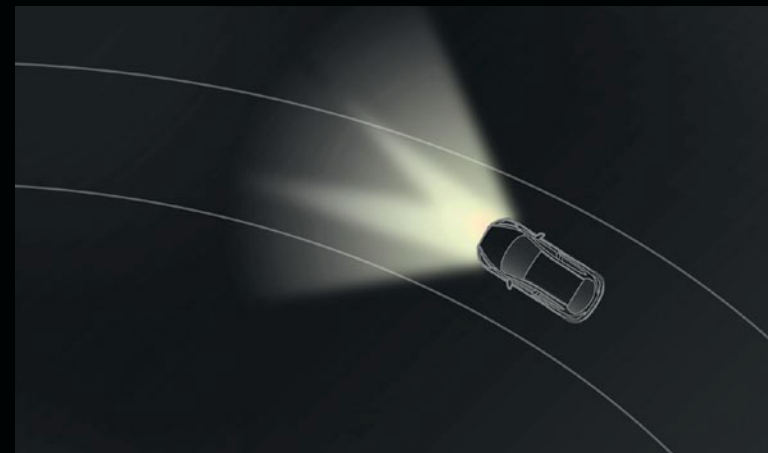
ADVANCED SMART CITY BRAKE SUPPORT (SCBS)

Designed to help avoid or minimise the effects of collisions at speeds of up to approximately 31mph. The forward-facing camera and laser-based system continually monitors the gap and closing speed of the vehicle in front and applies the brakes if a collision is likely (Not available on SE / SE Nav models).



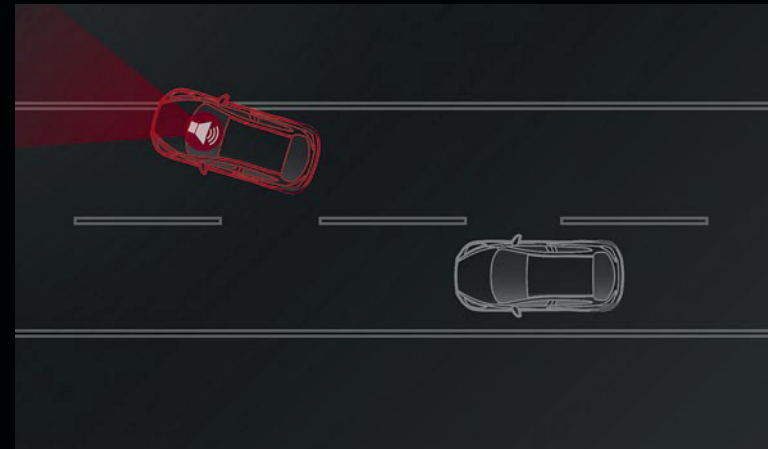
BLIND SPOT MONITORING SYSTEM*

Warns you of a vehicle entering a detection zone up to 50 metres behind, by activating a door-mirror mounted warning light on the relevant side of the vehicle. If you then indicate prior to turning in that direction, the warning light flashes and an audible alert sounds.



ADAPTIVE FRONT LIGHTING SYSTEM

Increase visibility when driving at night with the Adaptive Front lighting System. The system adjusts the LED headlights when cornering to illuminate more of the road ahead, which could increase your ability to react to any potential obstacles (Standard on Sport Nav models).



LANE-KEEP ASSIST SYSTEM WITH DRIVER ATTENTION ALERT*

Designed to prevent your vehicle from inadvertently straying from its lane by using a front-view camera to monitor the car position on the road. The system alerts the driver via an audible warning alarm and vibrations from the steering wheel if the vehicle moves out of the lane unintentionally and will take corrective action to keep it in its lane. The Driver Attention Alert system learns your driving style for 20 minutes and alerts you to take a break if it detects driver fatigue.

*Part of optional Safety Pack available on Sport Nav models in combination with Black or Light Stone leather interior, at additional cost. Not available on 105ps Diesel Sport Nav or Mazda3 Fastback Sport Nav models.



C H O I C E S

SE / SE NAV *MAZDA3*

STANDARD FEATURES:

- 16" alloy wheels
- Halogen headlights with daytime running lights
- Heated, auto power-folding door mirrors with integrated indicator lights
- Manual air-conditioning
- AM / FM / DAB radio with single CD player and 6 speakers
- 7" colour touch-screen display and Multimedia Commander
- USB, iPod® and Bluetooth® connectivity
- Internet app integration for internet radio, Facebook and Twitter*
- Steering wheel-mounted audio and Bluetooth® controls
- Engine start / stop button
- Electronic parking brake
- Auto-dimming rear-view mirror
- Front and rear electric windows
- Leather-wrapped steering wheel and gear knob
- 60:40 split folding rear seats
- Hill Hold Assist
- Tyre Pressure Monitoring System
- Anti-lock Braking System with Electronic Brake-force distribution and Emergency Brake Assist
- Dynamic Stability Control with Traction Control System
- Dual front, side and curtain airbags

OPTIONS:

- Metallic / Mica / Pearlescent paint
- Integrated navigation with 3-years free European map updates

For further information please visit our car configurator on www.mazda.co.uk

*Please refer to the footnote underneath the Infotainment table for more information.

SE - L NAV *MAZDA3*

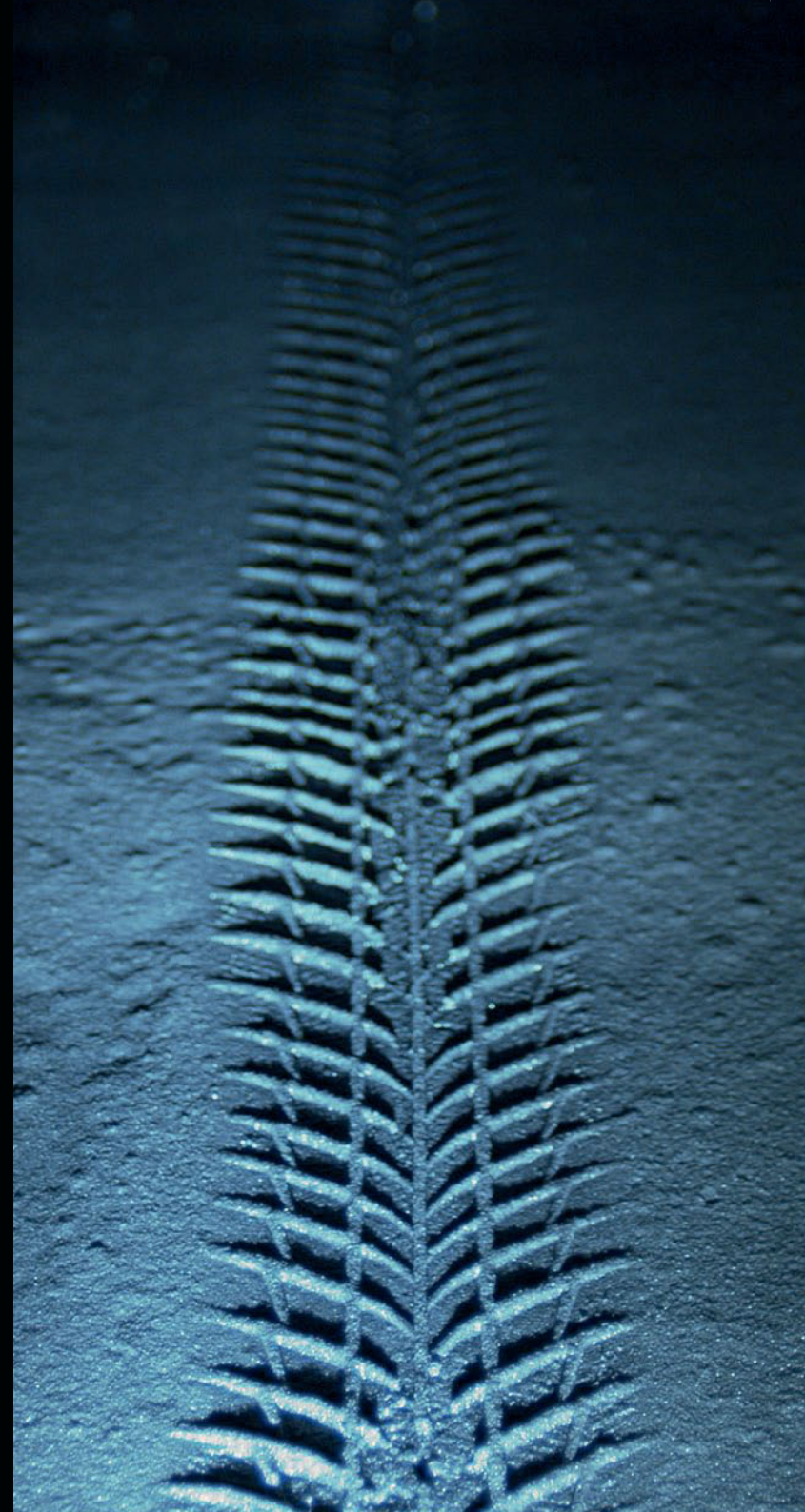
STANDARD FEATURES IN ADDITION TO SE GRADE:

- LED front fog lights
- Privacy glass
- Rear parking sensors
- Rain-sensing front wipers
- Dusk-sensing headlights
- Dual-zone climate control air-conditioning
- Heated front seats with 3-stage settings
- Cruise control
- Adjustable speed limiter
- Integrated navigation system with 3-years free European map updates
- Advanced Smart City Brake Support

OPTIONS:

- Metallic / Mica / Pearlescent paint

For further information please visit our car configurator on www.mazda.co.uk



S P O R T N A V *MAZDA3*

STANDARD FEATURES IN ADDITION TO SE-L NAV GRADE:

- 18" Alloy wheels
- Adaptive Front lighting System
- Premium Bose® Centerpoint® surround-sound system with nine speakers
- Digital speedometer
- LED headlights with LED daytime running lights
- LED signature rear lights
- Paddle shift (automatic transmission only)
- Colour Active Driving Display with Traffic Sign Recognition (Colour head-up display)
- Front parking sensors (in addition to rear sensors)
- Reversing camera
- Smart keyless entry

OPTIONS:

- Metallic / Mica / Pearlescent paint
- Black leather trim including driver power adjustable seat*
- Light Stone leather trim including driver power adjustable seat*
- Heated steering wheel**
- Safety Pack (Adaptive LED headlights, Blind Spot Monitoring System with Rear Cross Traffic Alert, Lane-keep Assist System with Driver Attention Alert and Rear Smart City Brake Support)***



* Black leather trim is standard on Mazda3 165ps Sport Nav models only and optional on 120ps and 150ps Sport Nav models at additional cost. Light Stone leather is optional on Mazda3 120ps, 165ps and 150ps Sport Nav models at additional cost. Not available on 105ps Diesel models.

** Heated steering wheel is available in conjunction with optional Black leather or Light Stone leather interior available at additional cost. (Standard on 165ps Sport Nav models).

*** Safety Pack is available on 120ps, 165ps and 150ps Sport Nav models in combination with Black or Light Stone leather trim at additional cost. Not available on Mazda3 Fastback models or 105ps Diesel models. For further information please visit our car configurator on www.mazda.co.uk

A C C E S S O R I E S



JET BLACK AERO KIT

A C C E S S O R I E S



JET BLACK FRONT AIRDAM SKIRT



JET BLACK REAR AIRDAM SKIRT



REAR BUMPER STEP FOIL



REAR BUMPER STEP PLATE



JET BLACK SIDE AIRDAM SKIRT

ACCESSORIES



JET BLACK REAR ROOF SPOILER AND REAR UNDERSKIRT



ALUMINIUM PEDAL SET



MAZDA3 SCUFF PLATES

ACCESSORIES



BOOT LINER



JET BLACK REAR ROOF SPOILER



ROOF RAILS



LED INTERIOR LIGHTING PACKAGE

S P E C I F I C A T I O N S

Model Availability		2.0 SKYACTIV-G Petrol 120ps Manual	2.0 SKYACTIV-G Petrol 120ps Automatic	2.0 SKYACTIV-G Petrol 165ps Manual	1.5 SKYACTIV-D Diesel 105ps Manual	2.2 SKYACTIV-D Diesel 150ps Manual	2.2 SKYACTIV-D Diesel 150ps Automatic
Mazda3:	SE / SE Nav	●	●	–	●	–	–
	SE-L Nav	●	●	–	●	●	●
	Sport Nav	●	●	●	●	●	●
Mazda3 Fastback:	SE-L Nav	●	–	–	–	●	–
	Sport Nav	●	–	–	–	●	–

● = Available; – = Not available.

Engine Type						
Displacement (cc)	1998	1998	1998	1499	2191	2191
Bore x stroke (mm)	83.5 X 91.2	83.5 X 91.2	83.5 X 91.2	76.0 X 82.6	86.0 X 94.3	86.0 X 94.3
Valves per cylinder	4	4	4	4	4	4
Maximum output (ps (kW) / rpm)	120 (88) / 6,000	120 (88) / 6,000	165 (121) / 6,000	105 (77) / 4,000	150 (110) / 4,500	150 (110) / 4,500
Maximum torque (Nm / rpm)	210 / 4,000	210 / 4,000	210 / 4,000	270 / 1,600- 2,500	380 / 1,800	380 / 1,800
Compression ratio	14:1	14:1	14:1	14.8:1	14:1	14:1
i-ELOOP system	–	–	●	–	–	–
i-stop system	●	●	●	●	●	●
Transmission type	6-speed manual	6-speed automatic	6-speed manual	6-speed manual	6-speed manual	6-speed automatic

Steering		Electronic Power Assist System (EPAS) rack and pinion					
Steering gear		Electronic Power Assist System (EPAS) rack and pinion					
Minimum turning circle:	wall to wall (m)	5.8	5.8	5.8	5.8	5.8	5.8

● = Standard; – = Not available.

Performance & Economy		Mazda3					
Acceleration (0-62mph in sec.)		8.9	10.4	8.2	11.0	8.1	9.7 / (9.0) ²⁾
Top speed (mph)		121	121	130	115	130	125
Fuel consumption ¹⁾ (mpg (l/100km)):	Urban	43.5 (6.5)	40.4 (7.0)	37.7 (7.5)	65.7 (4.3)	57.6 (4.9)	47.1 (6.0)
	Extra Urban	65.7 (4.3)	58.9 (4.8)	58.9 (4.8)	80.7 (3.5)	78.5 (3.6)	68.9 (4.1)
	Combined	55.4 (5.1)	50.4 (5.6)	48.7 (5.8)	74.3 (3.8)	68.9 (4.1)	58.9 (4.8)
CO ₂ emissions ¹⁾ (g/km)		119	129	135	99	107	127
EC emission level		Euro VI					
Fuel tank capacity (litres)		51	51	51	51	51	51
Recommended fuel		Unleaded 95 RON			Diesel		

Performance & Economy		Mazda3 Fastback					
Acceleration (0-62mph in sec.)		8.8	–	–	–	8.0	–
Top speed (mph)		123	–	–	–	132	–
Fuel consumption ¹⁾ (mpg (l/100km)):	Urban	43.5 (6.5)	–	–	–	60.1 (4.7)	–
	Extra Urban	65.7 (4.3)	–	–	–	80.7 (3.5)	–
	Combined	55.4 (5.1)	–	–	–	72.4 (3.9)	–
CO ₂ emissions ¹⁾ (g/km)		119	–	–	–	104	–
EC emission level		Euro VI	–	–	–	Euro VI	–
Fuel tank capacity (litres)		51	–	–	–	51	–
Recommended fuel		Unleaded 95 RON	–	–	–	Diesel	–

¹⁾ Fuel consumption and CO₂ emission figures are obtained under standardised test conditions defined in European legislation using a representative model. This allows for a direct comparison between different models from different manufacturers, but may not represent the actual fuel consumption achieved in 'real world' driving conditions. More information is available at <http://carfueldata.direct.gov.uk/>

²⁾ Figure in bracket refers to models fitted with 16" alloy wheels only

Dimensions & Weights		2.0 SKYACTIV-G Petrol 120ps Manual	2.0 SKYACTIV-G Petrol 120ps Automatic	2.0 SKYACTIV-G Petrol 165ps Manual	1.5 SKYACTIV-D Diesel 105ps Manual	2.2 SKYACTIV-D Diesel 150ps Manual	2.2 SKYACTIV-D Diesel 150ps Automatic
Mazda3							
Overall length / width ¹⁾ / height (mm)		4,470 / 1,795 / 1,465					
Ground clearance between the axles - unladen (mm)		155	155	155	155	155	155
Front track / rear track (mm)		1,555 / 1,560					
Wheelbase (mm)		2,700	2,700	2,700	2,700	2,700	2,700
Front headroom / legroom / shoulder room (mm)		981 / 1,073 / 1,452					
Rear headroom / legroom / shoulder room (mm)		955 / 909 / 1,382					
Cargo volume, acc. to VDA (including under floor storage space) (litres):	5-seat mode (to belt-line)	364	364	364	364	364	364
	2-seat mode	1,263	1,263	1,263	1,263	1,263	1,263
Kerb weight (kg) incl. driver (75 kg)		1,280	1,320	1,305	1,335	1,395	1,410
Permitted gross vehicle weight (kg):	Total	1,815	1,835	1,815	1,870	1,910	1,930
	Front / rear	935 / 880	955 / 880	935 / 880	985 / 885	1,035 / 875	1,050 / 880
Permitted axle load, front / rear (kg)		960 / 930	980 / 930	960 / 930	1,015 / 940	1,060 / 925	1,075 / 930
Towing limit (kg) ²⁾ :	Braked (12% gradient)	1,300	1,300	1,300	1,300	1,500	1,500
Maximum roof load (kg)		75	75	75	75	75	75

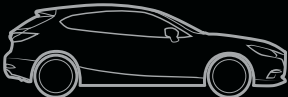
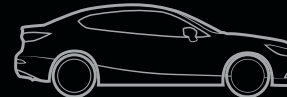
¹⁾ Vehicle width excludes wing mirrors.

²⁾ Towing capacity is based on a 12% gradient and tested in accordance with 92/21/EEC as amended by 95/48/EC.

Dimensions & Weights		2.0 SKYACTIV-G Petrol 120ps Manual	2.0 SKYACTIV-G Petrol 120ps Automatic	2.0 SKYACTIV-G Petrol 165ps Manual	1.5 SKYACTIV-D Diesel 105ps Manual	2.2 SKYACTIV-D Diesel 150ps Manual	2.2 SKYACTIV-D Diesel 150ps Automatic
Mazda3 Fastback							
Overall length / width ¹⁾ / height (mm)		4,580 / 1,795 / 1,450	–	–	–	4,580 / 1,795 / 1,450	–
Ground clearance between the axles - unladen (mm)		155	–	–	–	155	–
Front track / rear track (mm)		1,555 / 1,560	–	–	–	1,555 / 1,560	–
Wheelbase (mm)		2,700	–	–	–	2,700	–
Front headroom / legroom / shoulder room (mm)		981 / 1,073 / 1,452	–	–	–	981 / 1,073 / 1,452	–
Rear headroom / legroom / shoulder room (mm)		955 / 909 / 1,382	–	–	–	955 / 909 / 1,382	–
Cargo volume, acc. to VDA (including under floor storage space) (litres):	5-seat mode (to belt line)	419	–	–	–	419	–
	2-seat mode	–	–	–	–	–	–
Kerb weight (kg) incl. driver (75 kg)		1,280	–	–	–	1,395	–
Permitted gross vehicle weight (kg):	Total	1,815	–	–	–	1,910	–
	Front / rear	935 / 880	–	–	–	1,035 / 875	–
Permitted axle load, front / rear (kg)		960 / 930	–	–	–	1,060 / 925	–
Towing limit (kg) ²⁾ :	Braked (12% gradient)	1,300	–	–	–	1,500	–
Maximum roof load (kg)		75	–	–	–	75	–

¹⁾ Vehicle width excludes wing mirrors.

²⁾ Towing capacity is based on a 12% gradient and tested in accordance with 92/21/EEC as amended by 95/48/EC.

	Mazda3		Mazda3 Fastback	
SE / SE Nav		●		–
SE-L Nav		●		●
Sport Nav		●		●

● = Available; – = Not available.

SPECIFICATIONS

Safety and Security		SE / SE Nav	SE-L Nav	Sport Nav
SKYACTIV-Body engineered 'triple H' body structure to help protect occupants from impact forces		●	●	●
Self-supporting rigid and torsion-resistant all-steel body with defined crush zones for the front and rear sections, stable passenger safety cell with side impact reinforcement in the doors		●	●	●
Dynamic Stability Control (DSC) with Traction Control System (TCS)		●	●	●
Emergency Stop Signalling system (ESS)		●	●	●
Hill Hold Assist (HHA)		●	●	●
Advanced Smart City Brake Support (SCBS)		–	●	●
Driver and front passenger airbags		●	●	●
Front and rear curtain airbags		●	●	●
Front side airbags		●	●	●
Passenger airbag cut-off switch		●	●	●
Adaptive LED headlights (ALH)		–	–	□
Blind Spot Monitoring with Rear Cross Traffic Alert (BSM W/ RCTA)		–	–	□
Lane-keep Assist System (LAS) with Driver Attention Alert (DAA)		–	–	□
Rear Smart City Brake Support (Rr SCBS)		–	–	□
Seatbelts:	Front, 3-point (ELR) x 2 with pre-tensioners and load-limiters, height-adjustable	●	●	●
	Rear, 3-point (ELR) x 3 with pre-tensioners	●	●	●
	Reminder screen (driver, passenger and rear seats) with audible warning	●	●	●
ISOFIX child seat anchorages:	Attached to outer rear seats	●	●	●
Thatcham Category 1 alarm and immobiliser		●	●	●
Tyre Pressure Monitoring System (TPMS)		●	●	●

● = Standard; – = Not available; □ = Part of an optional Safety Pack available at additional cost for Sport Nav models in combination with Black or Light Stone leather trim. Not available on Mazda3 Fastback or 105ps Diesel models.

Exterior Features		SE / SE Nav	SE-L Nav	Sport Nav
Tyres and wheels:	205 / 60 R16 with 16" alloy wheels	●	●	–
	215 / 45 R18 with 18" alloy wheels	–	–	●
Emergency Tyre Repair Kit		●	●	●
Metallic / Mica / Pearlescent paint		○	○	○
Rear lip spoiler (Fastback models only)		–	–	●
Dual chrome exhausts (Hatchback models only)		● ¹⁾	● ¹⁾	● ¹⁾
Privacy glass:	Rear and rear side windows ²⁾	–	●	●
Wipers:	Front, adjustable speed with intermittent wipe	●	●	●
	Front, rain-sensing	–	●	●
	Rear, adjustable speed with intermittent wipe (Hatchback models only)	●	●	●
Headlights:	Halogen, with manual headlight levelling	●	●	–
	LED, with automatic headlight levelling	–	–	●
	Halogen daytime running lights	●	●	–
	LED signature daytime running lights	–	–	●
	Dusk-sensing lights	–	●	●
	Adaptive Front lighting System (AFS)	–	–	●
	Coming home / leaving home lights	●	●	●
LED Front fog lights		–	●	●
LED signature rear lights		–	–	●
Parking sensors:	Rear (with audible warning only)	–	●	–
	Front and rear (with audible warning and visual display)	–	–	●
Reversing Camera:	With static parking guidance lines shown on the 7" colour touch-screen display	–	–	●
Shark-fin antenna (hatchback models only)		●	●	●
Door mirrors:		●	●	●
	Electrically adjustable, heated, auto power-folding door mirrors with integrated indicators	●	●	●

Additional Exterior Options

Tyres & wheels:	16" and 18" optional alloy wheels
Mudflaps:	Front
	Rear
Rear roof spoiler (hatchback models only):	Jet Black
Front airdam skirt:	Jet Black (available with Soul Red or Sonic Silver accents)
Side airdam skirts:	Jet Black
Rear under skirt:	Jet Black (available with Soul Red, Sonic Silver or Jet Black accents)
Rear bumper step protector	
Roof carrier system:	Thule attachment for Skis / Snowboards
	Thule attachment for bicycles
	Roof rack
	Thule roof box, Touring 200
	Thule roof box, Touring 700
Tow bar:	Detachable
	Thule attachment for 2 bicycles

● = Standard; – = Not available; ○ = Option available at additional cost.

¹⁾ Not available on Mazda3 1.5D models

²⁾ Rear window of Fastback models is a lighter shade than rear side windows due to rear central brake light visibility.

Please contact your dealer for further information and availability.

SPECIFICATIONS

Interior Features		SE / SE Nav	SE-L Nav	Sport Nav
Meter set display:	Colour Active Driving Display with Traffic Sign Recognition (colour head-up display) - shows vehicle speed, warnings and turn-by-turn navigation	–	–	●
	Analogue speedometer	●	●	–
	Digital speedometer	–	–	●
	Trip computer	●	●	●
Seats:	Driver's seat, manual lumbar adjustment	●	●	●
	Driver's seat, manual slide, recline and height adjustment	●	●	●
	Driver's seat, power slide, recline and height adjustment	–	–	○ ¹⁾
	Front passenger seat, manual height adjustment	●	●	●
	Heated front seats with 3-stage settings	–	●	●
	Premium Black cloth trim	●	●	●
	Black leather seats ²⁾	–	–	○ ¹⁾
	Light Stone leather seats ²⁾	–	–	○ ³⁾
Rear seats:	Head restraints	●	●	●
	Centre armrest with two cupholders	●	●	●
	60:40 split fold down rear seats	●	●	●
Dashboard panel:	Silver	●	●	●
Steering wheel:	Leather-wrapped	●	●	●
	Paddle shift for automatic transmission models ⁴⁾	–	–	●
	Driver Selection for petrol automatic transmission models ⁴⁾	●	●	●
	Telescopic and tilt adjustment	●	●	●
	Heated	–	–	○ ¹⁾
Leather-wrapped gear knob and handbrake		●	●	●
Grab handles:	Front passenger's and two rear with coat hooks	●	●	●
Electronic parking brake with auto-disengage function		●	●	●
Sliding front centre armrest		●	●	●
Storage spaces:	Glovebox with illumination	●	●	●
	Seatback pocket (front passenger)	●	●	●
	Door pockets (driver, front passenger and rear)	●	●	●
	Front centre console with two cupholders	●	●	●
	Inside front centre armrest	●	●	●
Dome interior courtesy light, with integrated spotlight		●	●	●
Luggage compartment:	Light	●	●	●
Auto-dimming rear-view mirror		●	●	●

Additional Interior Options

Scuff plates:	Front and rear stainless steel with Mazda3 logo on the front scuff plates	Please contact your dealer for further information and availability.
Alloy pedal set		
LED welcome illumination		
Cup holder organiser		
Garment hanger		
Front and rear floor mats:	Carpet floor mat, 'Standard', Black	
	Carpet floor mat, 'Luxury', Black	
Luggage compartment:	Boot light	
	Boot liner	
	Boot net	
	Boot storage box	
Cool and warm box		
First aid kit		
Mini combi bag:	Including first aid kit, warning triangle and high visibility jacket	

● = Standard; – = Not available; ○ = Option available at additional cost.

¹⁾Black leather interior with power adjustable drivers seat and heated steering wheel is standard on the 165ps model and optional on 120ps and 150ps Sport Nav models only. Not available on 105ps Diesel models.

²⁾Leather refers to centre seat facing and side supports.

³⁾Not available on 105ps Diesel models

⁴⁾Hatchback Automatic models only.

Infotainment		SE / SE Nav	SE-L Nav	Sport Nav
Multimedia Commander:	Located between the driver and the front passenger, the Multimedia Commander allows easy control of the advanced Connectivity and infotainment system, with information displayed on the 7" colour touch- screen, includes a separate volume control dial	●	●	●
Mazda Multimedia System:	AM / FM radio / DAB radio, single CD / MP3 and six speakers	●	●	–
	AM / FM radio / DAB radio, single CD / MP3 with premium Bose® Centerpoint® surround-sound system and nine speakers	–	–	●
	7" Colour touch-screen display	●	●	●
	USB audio / iPod® connectivity ¹⁾	●	●	●
	Steering wheel-mounted audio and Bluetooth® controls ¹⁾	●	●	●
Mazda Navigation System:	Auxiliary (AUX) and two USB inputs	●	●	●
	European mapping with alternative route calculations, point of interest search, 3-years free map updates and Traffic Message Channel (TMC)	– / ●	●	●
Integrated Bluetooth®:	Premium Connected Services including Live traffic and weather information, fuel prices and local search ²⁾	– / ○	○	○
	Allows hands-free calling and easy access to phone contacts via touch- screen or commander. Includes audio transfer from compatible devices ¹⁾	●	●	●
Aha™ app and Stitcher™ app integration for internet radio, Facebook and Twitter ³⁾		●	●	●

Comfort and Convenience

Remote central locking with deadlocking	●	●	●	
Smart keyless entry system	–	–	●	
Engine start / stop button	●	●	●	
Cruise control with manual speed adjustment	–	●	●	
Adjustable speed limiter	–	●	●	
Air-conditioning:	Manual	●	–	–
	Dual-zone climate control	–	●	●
Front and rear electric windows, with one-touch auto down / up for driver's window		●	●	●
Sun visors:	Driver's and front passenger's, with covered vanity mirror, illumination and driver's ticket holder	●	●	●
Sunglasses holder		●	●	●

● = Standard; – = Not available; ○ = Option available at additional cost.

¹⁾Please refer to www.mazdahandsfree.co.uk for the latest information regarding compatibility and functionality of mobile devices.

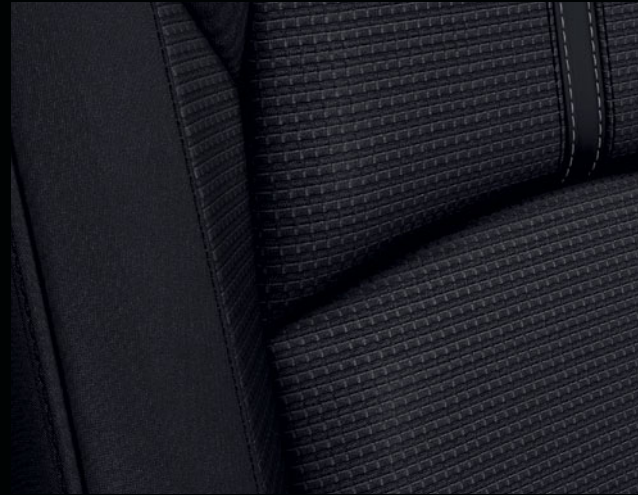
²⁾Connected Services are a subscription service. A 60-day free trial is included with your navigation system and commences the first time you connect the car to a Wi-Fi hotspot.

After the free trial has finished you must purchase a subscription to continue using Connected Services. Please speak to your dealer or visit www.mazda.co.uk/mzd-connect/navigation for more information.

³⁾Requires compatible mobile device. Aha™ / Stitcher™ apps need to be downloaded to mobile device and app registration completed before connection. Data usage and costs will vary, please contact your network provider for more information.

Please speak to your dealer or visit www.mazda.co.uk/mzd-connect for more information.

TRIMS



BLACK CLOTH (SE / SE NAV, SE-L NAV AND SPORT NAV)



LIGHT STONE LEATHER (SPORT NAV)**



BLACK LEATHER (SPORT NAV)*

* Black leather is standard on 165ps Sport Nav models only and available at an additional cost on all 120ps Sport Nav and 150ps diesel Sport Nav models.
 ** Light Stone leather is available at an additional cost on all 120ps, 165ps Sport Nav models and 150ps Diesel Sport Nav models.
 Please note Black leather and Light Stone leather are not available on 105ps diesel Sport Nav models.

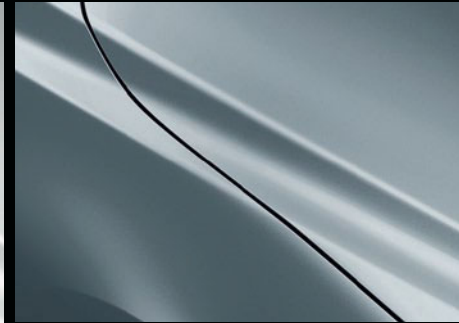
COLOURS



ARCTIC WHITE SOLID



SNOWFLAKE WHITE PEARLESCENT*



SONIC SILVER METALLIC*



ETERNAL BLUE MICA*



DEEP CRYSTAL BLUE MICA*



MACHINE GREY METALLIC*



JET BLACK MICA*



SOUL RED METALLIC*

Model	Arctic White Solid (A4D)	Deep Crystal Blue Mica (42M)	Eternal Blue Mica (45B)	Jet Black Mica (41W)	Machine Grey Metallic (46G)	Sonic Silver Metallic (45P)	Snowflake White Pearlescent (25D)	Soul Red Metallic (41V)
SE / SE Nav	●	○	○	○	○	○	○	○
SE-L Nav	●	○	○	○	○	○	○	○
Sport Nav	●	○	○	○	○	○	○	○

● = Available, ○ = available at additional cost.

* Available at additional cost.

OUR COMMITMENT TO YOU AND YOUR MAZDA

MY MAZDA APP

Designed exclusively for Mazda owners, it lets you access important vehicle information, as well as being able to locate your nearest Mazda dealer and track your vehicle service history.

SERVICE AND WARRANTIES

Just like the cars themselves, the services we offer are designed to provide you with a first-class ownership experience. Every new vehicle is covered by a 3-year warranty for up to 60,000 miles, including a 3-year paintwork warranty, and a 12-year perforation warranty. We also offer Extended Warranties to extend the cover for your Mazda. Mazda Roadside Assistance offers cover in the event you require breakdown assistance, your vehicle is stolen or is involved in an accident.

The maximum service interval for your Mazda is 12,500 miles or 12 months which ever occurs first, however, the servicing intervals may reduce based on the style of driving and the conditions under which your vehicle is operated.

FREE MAZDA ACCIDENT AFTERCARE

Mazda Accident Aftercare is designed to assist you following a road traffic accident. Call Mazda First after an accident and they will liaise directly with your insurer to process the claim and ensure that your vehicle is repaired at a Mazda approved bodyshop using only genuine Mazda parts, additional benefits include providing you with a free courtesy car and maintaining your Mazda warranties.

MAZDA CONTRACT HIRE

Mazda Financial Services Contract Hire offers low running costs with market-driven residual values, resulting in extremely competitive costs for businesses and individuals. To find out more about the benefits of Mazda Financial Services Contract Hire, please speak to your Mazda dealer or visit www.mazda.co.uk. T&Cs apply. You can never own the vehicle. Finance subject to status. Guarantees may be required. 18s or over. Mazda Financial Services Contract Hire. RH1 1SR

FINANCE

As well as vehicle warranty and service plans, we offer finance packages to help ensure a rewarding ownership experience. Mazda Financial Services provides a variety of finance products to suit the needs of both private and business customers.

WHAT YOU CAN EXPECT FROM MAZDA FINANCIAL SERVICES:

- Assistance in renewing your car. We'll help you choose the right finance package to enable you to renew your Mazda car as often as you would ideally like
- Fixed Interest Rates. The interest rate on your loan is fixed for the duration of the agreement
- Flexible terms tailored to your motoring needs. As specialists in Mazda vehicles we aim to tailor a finance package to both your budget and your motoring / ownership needs

Please ask your sales executive for a tailor-made finance quote for your new car.

MAZDA FINANCIAL SERVICES FINANCE PLANS: MAZDA CONDITIONAL SALE:

The traditional way of buying your car. Mazda Conditional Sale is a simple way of financing that provides you with certainty due to a fixed interest rate and fixed monthly repayments throughout the agreement. Your initial deposit and repayment period can be structured to help meet your budget and the length of time you expect to keep the car. You can trade in your existing vehicle and put this towards the initial deposit, or if you wish, just put down a cash deposit. At the end of your contract, when all repayments have been made, the car is yours.



OUR COMMITMENT TO YOU AND YOUR MAZDA

Mazda makes cars that excite, look beautiful, are fun to drive and make you want to drive them again and again. We are passionate about delivering complete motoring confidence and a first-rate ownership experience.

MAZDA PERSONAL CONTRACT PURCHASE:

The finance plan that helps you change your Mazda car at more regular intervals. Personal Contract Purchase is similar to a Conditional Sale agreement but with additional flexibility since part of the vehicle cost is deferred until the end of the agreement which may give you the benefit of lower monthly repayments. The deferred amount is known as the Guaranteed Future Value or Optional Final Payment.

At the end of your contract, when all repayments have been made, you then have three options:

- Renew: Choose another Mazda. Use any excess value above the Optional Final Payment towards a deposit for another Mazda. You can trade in your car at any time or sell it privately having settled your account
- Retain: Keep the car. Simply pay the Optional Final Payment, and the car is yours
- Return your car: There's nothing more to pay if the car's in good condition and within the agreed mileage

For further information, please visit <http://www.mazda.co.uk/buying-owning/buying/personal-finance/>

Finance subject to status. Terms and conditions apply. You will not own the vehicle until all payments are made. 18s and over. Guarantee may be required. Mazda Financial Services RH1 1SR.

CUSTOMER EXPERIENCE

Start your journey with Mazda using the Configurator on the Mazda website. It lets you customise a digital vehicle, letting you choose from a selection of engines, trims, exterior colours and accessories. Discover the benefits of becoming part of the community that defies convention with My Mazda - the online home for all Mazda owners. The service lets you view and update your personal information using the Mazda Digital Service Record (DSR), which provides security against counterfeit service documents and guarantees a secure, accurate and permanent service history for the life of the vehicle. You can also explore Facebook, Twitter and YouTube for even more Mazda related material. Whatever journey you take with Mazda, we'll make sure it's a unique and gratifying experience.

SKYACTIV TECHNOLOGY - HELPING YOU STAY EFFICIENT

Although we develop exciting cars that are fun to drive, we are equally committed to the environment and to the creation of a sustainable future for all. Our ongoing sustainability programmes are dedicated to the development of clean technologies. Our SKYACTIV Technology range includes engines, transmissions, chassis and body designs, which deliver fuel-efficient and economical driving. Our engines deliver the perfect combination of performance and improved driving economy by being lighter and more fuel-efficient than many of our competitors.

Looking for more information?

Learn more about our dedication to delivering a unique customer experience online at:



Mazda Motors UK reserves the right to introduce changes in specification and equipment due to its ongoing product development. Colour and trim samples shown in this brochure may vary from the actual colours because of the limitations of the printing process. It is recommended that you consult your Mazda dealer when referring to these.

Facebook, Twitter, iPod®, Stitcher™, aha™ and Bose® are registered trademarks in the U.S. and other countries. Used with permission.

The Bluetooth® word mark and logos are owned by the Bluetooth SIG, Inc. and any use of such marks by Mazda Motor Company is under licence. Other trademarks and trade names are those of their respective owners.

July 2017

Part number: 810079341

Internet: www.mazda.co.uk

Mazda Helpline: 03457 48 48 48

UK-EN / C5

