

# CT6

DRIVING LUXURY  
TO A NEW LEVEL.  
THE CADILLAC  
CT6 SEDAN.



*Cadillac*

DARE GREATLY





# AN EXCLAMATION OF REINVENTION

---

Innovatively engineered and impeccably crafted. Performance, innovation and craftsmanship have all been pushed to their limit, with an understatement that masks the effort. The CT6 represents a step forward in automotive design. Combining groundbreaking architecture, dynamic performance, superior comfort and connectivity, it delivers a driving experience in a class of its own.

The Cadillac CT6.



# THE FEELING

ONLY THOSE WHO DARE  
DRIVE THE WORLD FORWARD





TURN A THOUGHT STARTER  
INTO A STATEMENT



HEIGHTEN  
EACH SENSE

THRIVE FROM  
THE CALM WITHIN



CREATE UNDENIABLE CONNECTIONS







FIND FREEDOM IN THE UNEXPLORED

REDEFINE WHAT IT MEANS TO MOVE.  
THE UNRIVALED CADILLAC CT6.





# THE FEATURES

GREATNESS SHOWN  
IN EVERY DETAIL

# ELEGANCE, STRENGTH AND STYLE. A STANCE HAS BEEN TAKEN.

---

Impossible to ignore. Aluminum has been draped, glass has been molded, chrome accents have been shaped to hold the eye as firmly as the CT6 holds the road. Its low stance and strong lines are complemented by bold design elements like the iconic signature vertical light systems and integrated rear spoiler. When combined, these elements and more create a remarkable presence.

BODY DESIGN • INDIRECT FIRE LED HEADLAMPS • CONCIERGE LIGHTING






---

### DISTINCTIVE STYLING

Perfectly sculpted wherever you look. The CT6 presents an outstanding profile while still being distinctly Cadillac. The perfectly proportioned dash-to-axle ratio creates a long, low stance. The sleek lines boldly convey the agile performance it is capable of.

---

### ILLUMINATING THE WAY FORWARD

Light up the road ahead. The striking, vertical light systems frame the hood, beautifully complementing the long, low stance. The innovative lamp unit includes Indirect Fire LED-powered multifunctional headlamps – as well as daytime running lamps and turn signals – in a single, compact system. Both streamlined and brighter than conventional or competing LED technology, these lamps are key facets of the vehicle's sweeping silhouette.




---

### AN ENCHANTING WELCOME

A safe approach. When you get closer to your CT6 after dark, a signal from the passive entry key fob activates accent lighting in the headlamps, outside mirrors and door handles. The soft glow improves visibility and sense of security around the vehicle as you approach.

# A TESTAMENT TO THE POWER OF CRAFT AND TASTE

Meticulous in detail. Unrivaled as a whole. Reward your senses whether you drive, or are driven. The CT6 interior is the epitome of attention to detail – from the choice of materials to the care with which they are fitted and the comforts they frame. The interior design is a testament to the seductive power of craftsmanship and the hand-stitched, cut-and-sewn interior is tailored with opulent details. A prestige sedan, whose prestige comes from within.

ENHANCED CABIN CONFIGURATION • CABIN NOISE CANCELATION • QUADZONE CLIMATE SYSTEM • HEATED AND VENTILATED SEATS • BOSE® PANARAY® SOUND SYSTEM • EXTENDED COMFORT SEATS





STYLE AND SUBSTANCE

An elevated environment. The CT6 cabin is crafted using the highest quality materials. The interior themes feature rich leathers, exotic wood trims and Galvano chrome accents – all tailored to work together perfectly. And in addition to beauty, they are engineered to last.

THE SCIENCE OF SILENCE

Of the many innovations that make the CT6 interior the quietest of any vehicle in its class, none is more important than an advanced body structure – a frame constructed using revolutionary alloys and fusion techniques.

MICROCLIMATES, MACRO BENEFIT

Tailor the temperature to everyone's tastes. Standard on the CT6 Platinum model, the Quad-zone Climate System divides the interior into four sections, allowing each passenger to choose their individual temperature and airflow. An air ionization system keeps dust and odors out.

THE HEAT IS ON

The heated and ventilated seats are automatically activated according to both the outside and inside temperatures. At the same time, the heated steering wheel will switch on to provide the right level of warmth.



SOUND WORTHY OF ITS VENUE

Stunning sound in every seat. The Bose® Panaray® Sound System – standard on the Platinum model – was designed specifically for the CT6, making the most of its innovative technologies and 34 strategically placed speakers. A first for Cadillac, this meshing of vehicle and audio design delivers an exceptional listening experience.

THESE SEATS STAND ALONE

The idea of a most prestigious seat, realized in the CT6 Platinum Model. From 20-way adjustments in the front seats to reclining back seats, adjustable lumbar supports and tilting cushions, it offers every passenger full control of their seating. Generous rear legroom gives everyone ample space. Further features to keep passengers comfortable include cooling elements, a woven-in-seat heat system and five different massage programs to choose from. For even more relaxation, controls in the armrest – which include USB and HDMI ports – allow you to control screens in the front seatbacks to watch your favorite content.



## A MOST ELEGANT LEAP FORWARD

Control, confidence, contentment. The CT6 is equipped with leading-edge technologies designed to help with everything from the mastery of information and communications to making the most of your digital devices. Whatever their function, all share seamless designs and intuitive interfaces that keep you moving forward.

CADILLAC CUE® • WIRELESS CHARGING • REAR CAMERA MIRROR • PHONE INTEGRATION •  
ONSTAR® 4G LTE AND BUILT-IN WI-FI HOTSPOT • REAR SEAT INFOTAINMENT



Shown with Apple CarPlay™. App functionality varies by market.





### MORE THAN AT YOUR FINGERTIPS

Cadillac CUE<sup>®1</sup> puts a suite of information and entertainment features – including climate, audio and settings control, plus 3D GPS navigation – at your command.

### A TOUCH OF POWERFUL DESIGN

Another means of control. The 10.2" front touch-screen with both touchpad and console buttons is streamlined for speed and ease. The vibrant LCD screen mimics a smartphone with large and easy-to-target icons that respond to natural gestures for a safe-while-connected driving experience. The Cadillac CUE<sup>®</sup> system's many functions can easily be accessed through a laptop-like touchpad, seamlessly integrated into the center console.



### CHARGING CONVENIENCE

Power up. With the conveniently located Wireless Charging and phone charging case, you can power your compatible phone whenever the vehicle is running.<sup>2</sup>



### A BRILLIANT LOOK BACK

An enhanced view of the world behind you. With just a touch, you can activate the industry-first Rear Camera Mirror and stream HD video of the area behind the car. This less obstructed view offers 300% more vision than ordinary technology. It reverts to a traditional mirror at the flick of a switch. Thanks to the wash nozzle in the decklid, the CT6 improves visibility when the rear camera gets dirty.

<sup>1</sup> Full functionality requires compatible Bluetooth<sup>®</sup> and smartphone. Some devices require USB connectivity. <sup>2</sup> The system wirelessly charges one PMA- or Qi-compatible mobile device. Mobile phone must support wireless charging functionality.



Shown with Apple CarPlay™. App functionality varies by market.

## PHONE INTEGRATION

Your phone, even smarter. Phone Integration with Apple CarPlay™ compatibility allows you to access contacts, Apple Music™ and other information from your iPhone®. You can also use Siri®, so features are easily accessible to you.

Phone Integration also offers Android Auto™ compatibility and allows seamless voice-guided navigation with Google Maps™. When on the road, stream endless music on Google Play™, make phone calls or send and receive texts.<sup>1</sup>

## ONSTAR® 4G LTE AND BUILT-IN WI-FI HOTSPOT

Stay connected. The standard OnStar® 4G LTE and built-in Wi-Fi hotspot support up to seven mobile devices at 4G LTE speeds up to 15 meters away from your CT6.<sup>2</sup>



## ENTERTAINED REGARDLESS OF WHERE YOU ARE SITTING

Keep every passenger entertained. The available Rear Seat Infotainment system features articulating 10" HD screens that retract into the front seatback, Blu-ray™ playback and connectivity for your personal devices. The screen tilts to make viewing easier and will remember that position until set to a new one.

<sup>1</sup>. Vehicle user interfaces are products of Apple and Google and their terms and privacy statements apply. Requires compatible smartphone and data plan rates apply. Android Auto™ requires a smartphone running Android Lollipop 5.0 OS or above; Apple CarPlay™ requires an iPhone 5 or later. Full lists of supported apps are available at [Apple.com/ios/carplay](https://apple.com/ios/carplay) and [Android.com/auto](https://android.com/auto). Please note that availability of apps may vary by market. <sup>2</sup>. All OnStar services and Wi-Fi services will cease to be available on 31<sup>st</sup> December 2020. No trial or paid subscriptions or services, including emergency response services, will be available after that date. Some functions are not available in all countries abroad, or at the time of purchase. OnStar® services are provided by and require an account with OnStar® Europe Ltd. OnStar® services require activation and are subject to mobile network coverage and availability. Wi-Fi services are provided by and require an additional account with the nominated mobile network operator. The Wi-Fi trial has a time limit and capped data allowance. Charges apply thereafter. The OnStar® subscription packages could be different from the services included in the free trial package. Contact your Cadillac Partner or our Customer Care for details on availability, network coverage, specification, the length of the free trial period and charges. Terms and conditions apply.

## TRAVEL THE ROAD WITH AUTHORITY

---

The CT6 is equipped with an array of performance features that ensure the road is firmly under your command.

The 3.0L V6 Twin-Turbo engine offers horsepower and torque in abundance. And a lightweight, bespoke vehicle architecture delivers its own advantages, serving as a platform for highly responsive handling technologies.

3.0L V6 TWIN-TURBO • ALL-WHEEL DRIVE • FUSION FRAME •  
ACTIVE CHASSIS SYSTEM • MAGNETIC RIDE CONTROL™ •  
ACTIVE REAR STEERING





## WIELD POWER WISELY

Power at your command. The standard 3.0L V6 Twin-Turbo delivers 417 hp (307 kW)<sup>1</sup> and 555 Nm of torque for top-class acceleration and response. It features cylinder deactivation for outstanding efficiency, Auto Stop/Start technology and blissful performance.

## POOR WEATHER, GREAT HANDLING

Expert handling in all conditions. All-Wheel Drive delivers a superior and efficient driving experience. A dedicated two-gear design eliminates intrusion into the cabin while enhancing launch performance and cornering – especially on wet roads.

## A FRAME FOR PERFORMANCE

Innovation from the ground up. An incredibly rigid, yet lightweight frame is at the heart of this sedan's precise handling and impressive acoustics. An advanced, lightweight vehicle architecture, plus innovative fusion technologies, high-pressure aluminum casting and high-strength steel make it possible.

## ABSOLUTELY AGILE

Taming the road has never been this easy. The CT6 Active Chassis System, on the Platinum model, monitors each wheel independently, adjusting vertical suspension dampening every millisecond. Along with All-Wheel Drive, four-wheel steering and three driving modes (Tour, Sport, Snow/Ice) it delivers unmatched maneuverability and performance.

## READING THE ROAD

Cadillac's Magnetic Ride Control™ automatically adjusts the suspension to road quality and weather conditions, reading the road up to 1 000 times a second to react accordingly. The result is a smooth, responsive drive.



## A MORE SUPPLE TURN

For more agility at low speeds, Active Rear Steering turns the rear wheels in the opposite direction to the front wheels. This shortens the turning circle and makes parking and slow-speed maneuvering much easier. At highway speeds, it turns the rear wheels in the same direction as the front to assist with smooth and stable lane changes and emergency maneuvers. It also improves handling in snow and icy conditions.

<sup>1</sup> Fuel consumption urban/extra-urban/combined (l/100 km): 13.6-13.2/7.5-7.4/9.8-9.6; CO<sub>2</sub> emissions combined (g/km): 223-218 (according to NEDC regulation R [EC] No. 715/2007).

## ON ANY JOURNEY, CONFIDENCE IS KEY

As safe as it is beautiful. The CT6 is equipped with an array of sophisticated safety technologies. Some pierce through the darkness to help you find your way.

Others look down the road, helping you to anticipate danger. While some are automatic, others are designed to assist you. But all are designed to help reassure you every day. Every drive.

FRONT PEDESTRIAN DETECTION • FORWARD COLLISION ALERT • ENHANCED NIGHT VISION • TRAFFIC SIGN RECOGNITION • REAR CROSS-TRAFFIC ALERT • SURROUND VISION • SIDE BLIND ZONE ALERT • LANE KEEP ASSIST • FRONT AND REAR AUTOMATIC BRAKING • ADAPTIVE CRUISE CONTROL • SAFETY ALERT SEAT • AUTOMATIC PARKING ASSIST • INTELLIBEAM® • ONSTAR® • STABILITRAK® • RAINSENSE WIPERS





## FRONT

### HELP KEEP AN EYE ON PEDESTRIANS

Front Pedestrian Detection uses a camera to scan the road ahead. If a pedestrian is detected, indicators and alerts activate and, if necessary, the vehicle brakes automatically to help avoid a collision.

### TRULY FORWARD-THINKING

Standard Forward Collision Alert monitors the traffic ahead, alerting you to imminent danger.

### SEE BETTER IN THE DARK

Using thermal technology, the Night Vision System – standard on CT6 Platinum – alerts you to what lies ahead in the dark.

### ALWAYS AWARE

With standard Traffic Sign Recognition, you can dedicate your full attention to the road. Speed limit information and no-overtaking signs are displayed in the instrument cluster or on the Head-Up Display.

## REAR

### BE ALERTED EVEN IN REVERSE

When backing out of a parking space, standard Rear Cross-Traffic Alert warns of oncoming traffic to either side of your vehicle.

### A HIGHER FORM OF SAFETY

Standard Surround Vision provides a bird's-eye view of the area immediately surrounding the vehicle when in low-speed Drive or Reverse. This view, projected on the Cadillac CUE® screen, helps increase your awareness when parking or reversing.

## SIDE

### ALL CLEAR

Standard Side Blind Zone Alert monitors your blind spots, so if another vehicle is in the adjacent lane an icon in the outside mirror illuminates to alert you.

### TRAVEL STRAIGHT AND SMART

If you are not signaling, Lane Keep Assist gently turns the steering wheel if you approach a detected lane marking and Lane Departure Warning alerts you if you drift into another lane.

## INSIDE

### GAIN PRECIOUS TIME

Up to certain speeds, Front and Rear Automatic Braking can sense potential front and rear collisions and automatically engage the brakes – giving you more reaction time.

### SAFE SPACE

Adaptive Cruise Control employs front radar technology to maintain a selected distance between you and the vehicle ahead.

### DANGER DETECTED

Discreet, invaluable. If it senses the possibility of a collision, Cadillac's patented Safety Alert Seat sends a discreet pulse to the driver's seat, indicating the direction of the threat – left, right or both.

Safety features are no substitute for the driver's responsibility to operate the vehicle in a safe manner. The driver should remain attentive to traffic, surroundings and road conditions at all times. Read the vehicle Owner's Manual for more important safety information. The CT6 Luxury and Platinum Models include the following standard safety features: Automatic Safety Belt Tightening, Front Pedestrian Detection, Following Distance Indicator, Forward Collision Alert, Lane Departure Warning, Lane Keep Assist, Rear Cross-Traffic Alert, Side Blind Zone Alert, Lane Change Alert, Traffic Sign Recognition, Low Speed Collision Mitigation. The CT6 Platinum Model includes the following additional safety features as standard: Adaptive Cruise Control, Enhanced Night Vision and Integrated Front and Rear Automatic Braking.




---

### SMARTER LIGHTS

High beams, higher thinking. To improve safety, the CT6 is equipped with IntelliBeam®. These intelligent headlamps automatically activate or deactivate the high beam according to outside conditions. The system also dips the high beam when when approaching tail lamps or approaching headlamps.

---

### AUTOMATIC PARKING ASSIST

Automatic Parking Assist uses sensors to locate an appropriately sized parking space and steers the car into that space. Includes semi-automatic steering and braking aid for a more comfortable parking experience.

---

### ACCESS TO SAFETY AND SERVICES

Securely connected. No matter where you are headed, OnStar® helps keep you safe and ready for the journey. For instance, Automatic Crash Response is standard for the first year. So, if the unexpected happens, you're not on your own.<sup>1,2</sup>




---

### A MORE SURE FOOTING

When driving in low traction conditions like on snow, in the rain or on gravel, the Electronic Stability Control System enhances your grip. StabiliTrak® automatically applies brake pressure and reduces engine torque, helping you keep on track and in control.

---

### A SENSE FOR RAIN

The smart, front Rainsense Wipers automatically engage when rain is detected. They also adjust their speed to the intensity of the rain.

**1.** All OnStar services and Wi-Fi services will cease to be available on 31<sup>st</sup> December 2020. No trial or paid subscriptions or services, including emergency response services, will be available after that date. Some functions are not available in all countries abroad, or at the time of purchase. OnStar® services are provided by and require an account with OnStar® Europe Ltd. OnStar® services require activation and are subject to mobile network coverage and availability. Wi-Fi services are provided by and require an additional account with the nominated mobile network operator. The Wi-Fi trial has a time limit and capped data allowance. Charges apply thereafter. The OnStar® subscription packages could be different from the services included in the free trial package. Contact your Cadillac Partner or our Customer Care for details on availability, network coverage, specification, the length of the free trial period and charges. Terms and conditions apply. **2.** OnStar® emergency assistance services are not e-Call services for the purposes of the e-Call Regulation. Currently, no Cadillac models fall under the pan-European e-Call requirement. Should models do so, they will be equipped with an e-Call system. OnStar® acts as a link to existing emergency service providers. Vehicles may not all transmit all crash data.

## ONSTAR®

No matter where you are headed, OnStar® services keep you feeling safe, connected and cared for. A touch of a button connects you to a qualified advisor, not a machine, accessible 24/7, 365 days a year virtually everywhere in Europe. OnStar® gives you access to premium features such as Automatic Crash Response, your own Personal Assistant and a fast, in-car 4G LTE Wi-Fi Hotspot. What's more, OnStar® services are free of charge for the first 12 months.<sup>1,2,3,4</sup>

### SAFE

#### AUTOMATIC CRASH RESPONSE.

In case of an accident, OnStar® advisors automatically connect to your car. If needed, they immediately brief the emergency services with passenger and key car information and can direct them to your exact location.<sup>1,4</sup>

#### 24-HOUR EMERGENCY CALL SERVICE.

You, a passenger or a passer-by not feeling well? Push the red SOS button and our advisors will be sure to send help right away.<sup>1</sup>

#### ROADSIDE ASSISTANCE.

If you have a flat tire or a warning light on the dashboard, just contact our advisors and they will send Roadside Assistance to your location, if required. This is even more valuable in areas with weaker mobile phone coverage or if your smartphone's battery is flat.<sup>1,5</sup>

#### STOLEN VEHICLE ASSISTANCE.

In case your car gets stolen, OnStar® blocks the ignition so the car cannot be restarted again and provides the police with GPS data to help retrieve your car safely.<sup>1</sup>

### CARED FOR

#### HOTEL BOOKING.

Plans changed? Or too tired to keep driving? Let OnStar® advisors take care of your hotel booking en route, powered by Booking.com. Just press the blue Service button.<sup>1,6</sup>

#### DESTINATION DOWNLOAD.

No more address typing! OnStar® advisors can assist you in finding an alternative route, a restaurant or a gas station. They will remotely download the address to your built-in navigation system, too.<sup>1</sup>

#### VEHICLE DIAGNOSTICS.

Not sure what a warning light on the dashboard means? Just ask the advisors to remotely check key systems in your car, in real time. At your request, OnStar® can also send you a monthly email showing your car's oil level, tire pressure and other data, to help you stay in control.<sup>1</sup>

#### PARKING SERVICE.

Never search for a parking space again! Via Parkopedia, OnStar® finds and leads you to the next vacant parking spot. This way, you already know availability and parking fees before you get there.<sup>1,7</sup>

### CONNECTED

#### 4G LTE AND WI-FI HOTSPOT.

Enjoy the benefits of fast and stable internet access on board, with an integrated Wi-Fi hotspot for up to 7 devices. So the content you want will be headed where you are – thanks to the most powerful OnStar® connection yet.<sup>1,2,3</sup>

#### YOUR PRIVACY. YOUR CALL.

With the Privacy button, you are in control of what OnStar® can and cannot do. Mask your location whenever you want and reveal it again if you change your mind. Only in an emergency can OnStar® override this.<sup>8</sup>

## ABOUT THIS BROCHURE

The information contained in this brochure was accurate at the time of going to press (January 2019). Availability, technical features and equipment provided on our vehicles can vary from one country to another and may change without prior notice. The vehicles shown in this brochure are for illustration purposes only. European specifications may vary. Some illustrations feature equipment that is not included in every model. The colors printed in the brochure only approximate actual colors. Information on recycling design and End of Life Vehicles (ELV) can be found on [cadillaceurope.com](http://cadillaceurope.com).

For precise information on the equipment provided on our vehicles, please contact your local Cadillac Partner. This material shall not be reprinted, in whole or in part, without the express written permission of General Motors. We have tried to make this brochure comprehensive and factual. We reserve the right, however, to make changes at any time, without notice, to prices, colors, materials, equipment, specifications, models and availability. Specifications, dimensions, measurements, ratings and other numbers in this brochure and other printed materials provided at the dealership or affixed to vehicles are approximates based upon design and engineering drawings and prototypes and laboratory tests. Your vehicle may differ due to variations in manufacture and equipment. As some information may have been updated since the time of printing, please check with your Cadillac Partner for complete details. Any variations in colors shown are due to reproduction variation in the printing process. Cadillac reserves the right to lengthen or shorten the model year for any product for any reason, or start and end model years at different times. Please note that not all trims, colors or options might be available in your market. Please check with your nearest Cadillac Partner for availability.

## OWNER BENEFITS

We have created a comprehensive suite of owner benefits, providing everything our Cadillac owners need and everything they deserve.

#### CADILLAC SERVICE

Whether you are at home or on the road, our Cadillac Partners are there to offer you truly personal assistance. Count on them to arrange service appointments, answer questions about your new Cadillac and ensure you are always satisfied with your ownership experience. To find your nearest Cadillac Partner, visit [cadillaceurope.com](http://cadillaceurope.com)

#### WARRANTY

Every Cadillac is built to the highest standards and is manufactured with the utmost care. As a Cadillac owner, you can expect nothing less than premium service and protection. Should you experience defects in materials or through deficient workmanship your entire vehicle is backed by our no excess, Bumper-to-Bumper, Limited Cadillac Warranty for three years or 100 000 km – whichever comes first, plus a 6-year anti-perforation corrosion warranty. Should the vehicle change owner, the warranty transfers automatically during the warranty period.

#### ROADSIDE ASSISTANCE

Cadillac Assistance provides assistance to Cadillac owners with a wide range of services 24 hours a day, 365 days a year, throughout Europe. These services are available for a period of 36 consecutive months, beginning with the initial "In-Service Date" of each eligible vehicle. Ask your local Cadillac Partner for details.

	CO <sub>2</sub> EMISSIONS COMBINED (G/KM)	FUEL CONSUMPTION (L/100 KM)			FUEL-EFFICIENCY CATEGORY							
		URBAN	EXTRA-URBAN	COMBINED	BE	CH	DE	DK	FR	LU	NL	UK
<b>3.0L V6 TWIN-TURBO AWD AT8 Platinum</b>	<b>223</b>	<b>13.6</b>	<b>7.5</b>	<b>9.8</b>	<b>G</b>	<b>G</b>	<b>E</b>	<b>G</b>	<b>F</b>	<b>G</b>	<b>G</b>	<b>K</b>
<b>3.0L V6 TWIN-TURBO AWD AT8 Luxury</b>	<b>218</b>	<b>13.2</b>	<b>7.4</b>	<b>9.6</b>	<b>G</b>	<b>G</b>	<b>E</b>	<b>G</b>	<b>F</b>	<b>G</b>	<b>F</b>	<b>-</b>

**1.** All OnStar services and Wi-Fi services will cease to be available on 31<sup>st</sup> December 2020. No trial or paid subscriptions or services, including emergency response services, will be available after that date. OnStar® services require activation and account with OnStar® Europe Ltd. Charges apply after applicable trial period. All services subject to mobile network coverage and availability. The OnStar® subscription packages could be different from the services included in the free trial package. Contact your Cadillac Partner or our Customer Care for details about availability, network coverage, specification, the length of the free trial period and charges. Terms and conditions apply. **2.** Once available, Wi-Fi services are provided by and require an additional account with the nominated mobile network operator. Wi-Fi trial has time limit and capped data allowance. Charges will apply thereafter. All services subject to mobile network coverage and availability. **3.** Excluding Wi-Fi hotspot services – for availability and applicable free trial periods for the Wi-Fi hotspot services, please check with your Cadillac Partner or our Customer Care. Contact your Cadillac Partner or our Customer Care for details about availability, network coverage, specification, the length of the free trial period and charges. Terms and conditions apply. **4.** OnStar® emergency assistance services are not e-Call services for the purposes of the e-Call Regulation. Currently, no Cadillac models fall under the pan-European e-Call requirement. Should models do so, they will be equipped with an e-Call system. OnStar® acts as a link to existing emergency service providers. Vehicles may not all transmit all crash data. **5.** OnStar® will direct a professional breakdown recovery team to your location. If your car is within the Cadillac New Vehicle Roadside Assistance coverage period, OnStar® will connect with the Cadillac Roadside Assistance service, who will send help free of charge, subject to the Cadillac Roadside Assistance terms and conditions. If your vehicle is outside the coverage of the Cadillac New Vehicle Roadside Assistance service, the provider of the breakdown recovery service may apply charges for the services provided. **6.** An OnStar® advisor can help you to book a hotel room using Booking.com, subject to the Booking.com user terms and privacy statement, which can be found on the Booking.com website, and the applicable terms and conditions for your hotel. OnStar® helps you make a booking and is not responsible for the services provided by Booking.com or the applicable hotel. Email address and credit card required. **7.** Only available for car parks listed in Parkopedia.com. Availability applies only to the moment of contact with OnStar®. **8.** In events such as a crash or if your vehicle is stolen.

All data are for base models with standard equipment. The calculation of fuel consumption according to 2007/715/EU (NEDC) is based on the empty weight, measured in accordance with this directive. The addition of extra equipment may cause consumption and CO<sub>2</sub> emissions to be slightly higher than indicated. The CO<sub>2</sub> emissions data do not refer to specific vehicles and are not part of a commercial offer.

©2019 General Motors. All rights reserved. GM, the GM emblem, Cadillac, the Cadillac Crest, OnStar, the OnStar emblem and the slogans, emblems, vehicle model names, vehicle body designs and other marks appearing in this brochure are the trademarks and/or service marks of General Motors, its subsidiaries, affiliates or licensors. Apple, iPhone and Apple CarPlay are trademarks of Apple Inc., registered in the U.S. and other countries. Android is a trademark of Google, Inc. Bose and Centerpoint are registered trademarks of Bose Corporation. Blu-ray is a trademark of Blu-ray Disc Association. [www.cadillaceurope.com](http://www.cadillaceurope.com), Cadillac Europe GmbH, a company registered under the laws of Switzerland and having its registered office at Boulevard Lillienthal 6, 8152 Glattpark.

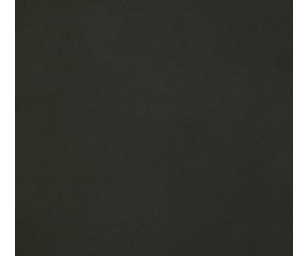


## INTERIOR COMBINATIONS

**JET BLACK<sup>1</sup>**  
LEATHER SEATING SURFACES WITH CHEVRON-PERFORATED INSERTS



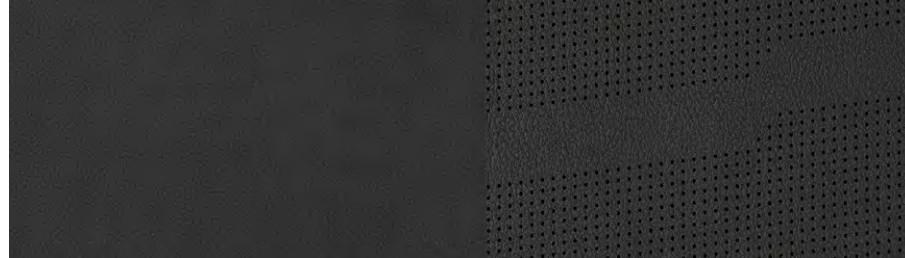
JET BLACK ACCENTS



MINERAL POPLAR BURL AND BRONZE CARBON FIBER



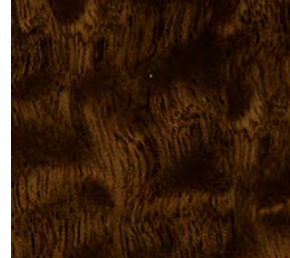
**JET BLACK<sup>2</sup>**  
SEMI-ANILINE FULL-LEATHER SEATS WITH CHEVRON-PERFORATED INSERTS



JET BLACK ACCENTS



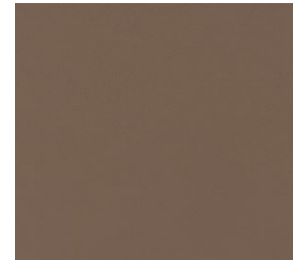
CHOCO NOIR SAPELE AND TWILL-WEAVE CARBON FIBER



**VERY LIGHT CASHMERE<sup>2</sup>**  
SEMI-ANILINE FULL-LEATHER SEATS WITH CHEVRON-PERFORATED INSERTS



MAPLE SUGAR ACCENTS



CAFÉ NOIR EUCALYPTUS AND CAFÉ AU LAIT EUCALYPTUS



## WHEELS



**20" ULTRA-BRIGHT MACHINED-FACE ALUMINUM MULTI-SPOKE WITH MANOOJIAN SILVER POCKETS**

Standard on CT6 Luxury



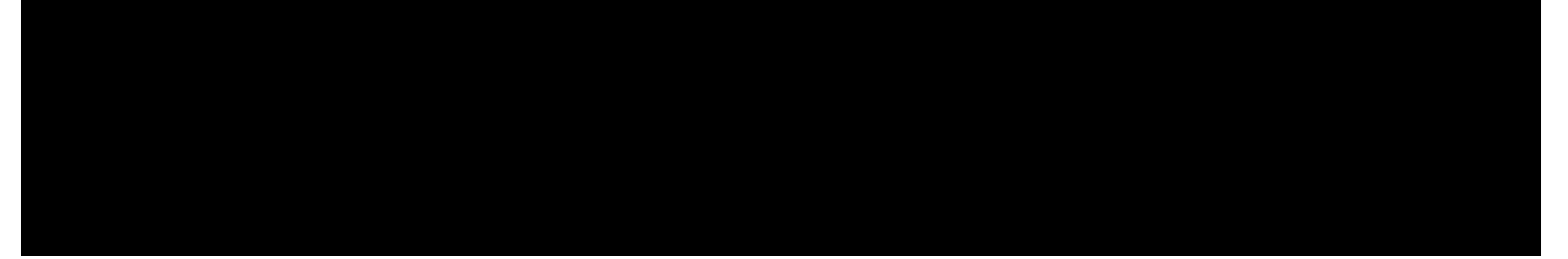
**20" 5 SPLIT-SPOKE ALUMINUM WITH MANOOJIAN SILVER PREMIUM-PAINTED FINISH AND 5 CHROME INSERTS**

Standard on CT6 Platinum

**1.** Standard on CT6 Luxury. **2.** Standard on CT6 Platinum.

## EXTERIOR COLORS

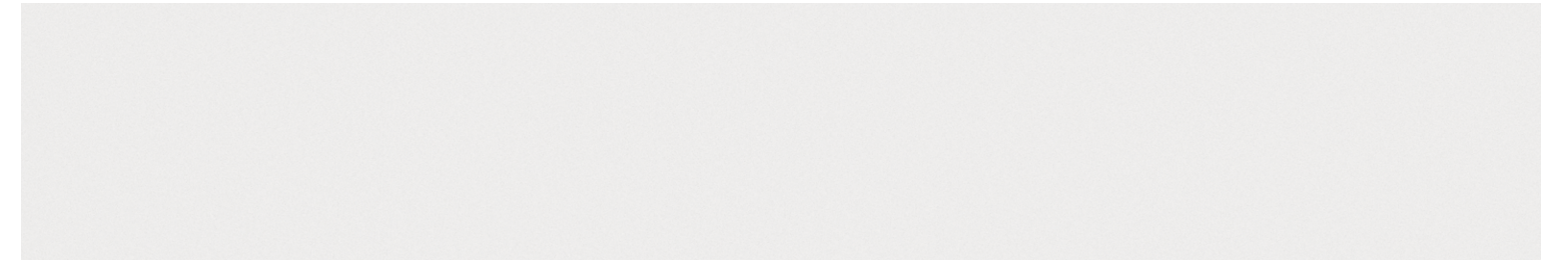
STELLAR BLACK METALLIC



DARK ADRIATIC BLUE METALLIC<sup>1</sup>



CRYSTAL WHITE TRICOAT<sup>1</sup>



**1.** Available at extra cost on CT6 Platinum.

