

# KONA Electric

2023



# Because of you.

At Hyundai, we believe that only with you in mind will we be able to provide progress, innovation, sustainability and mobility that evolves the driving experience.

We prioritize research and development in connected and clean mobility solutions, continuing to push boundaries and challenge conventional thinking to bring you a connected experience and a sustainable vision for the future.

We are inspired to build platforms and technology that provide you with more ways to enjoy quality time with our vehicles. To live a comfortable and connected life where you enjoy the journey, not just the destination.

We also tailor our vehicles with features that meet the demands of our Canadian landscape, so you can take on our extreme winters and amazing summers in comfort and with confidence. And, of course, we back our vehicles with one of the best automotive warranties in the industry.

We do all of this because of you.





# Meet the new KONA Electric.

With its dynamic design, impressive battery range and a host of technology innovations, the new KONA Electric checks all the boxes for those looking to take advantage of the benefits offered by this very impressive electric vehicle.



**Standard EV fast charger capability (100 kW)**

A port integrated into the front grille makes charging quick and easy whether you are at home, work or on the go. The battery can be recharged up to 80% of its capacity in less than an hour with a Level 3 (100 kW fast charging station) charger\*, leaving you with minimal downtime.

# Enjoy electric driving at its best.

Travel up to 415 kilometres<sup>^</sup> on a single charge, completely emissions-free. With this extensive range, you could charge the battery as little as once a week, depending on your lifestyle and driving habits.



## Electric

Standard 150 kW electric motor  
+ 64 kWh lithium-ion polymer battery

201

horsepower

290

lb.-ft. torque

Up to  
415

km all-electric  
driving range<sup>^</sup>



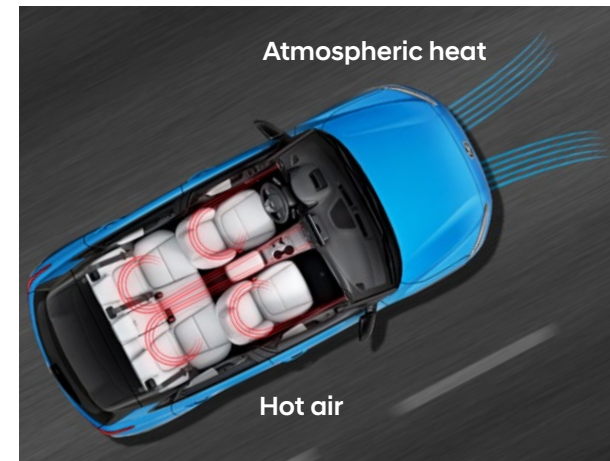
### Standard regenerative braking system

The innovative regenerative braking system maximizes your efficiency by charging the battery while you drive, using energy that would otherwise have been wasted. Enjoy hands-on input to adjust the level of regenerative braking by using the mounted paddles on the steering wheel.



### Standard Battery Temperature Management System

Beneficial for Canadian winters, this system helps ensure battery performance does not suffer at low temperatures. It will pre-warm the battery while the vehicle is connected to the charger to help maximize performance and minimize cold temperature range loss.



### Standard Heat Pump System

Helps reduce loss of electric driving range in cold winter weather. The standard system absorbs external heat energy and converts it to cabin heating, therefore requiring less energy usage by the HVAC system.

# Electrifying new looks.

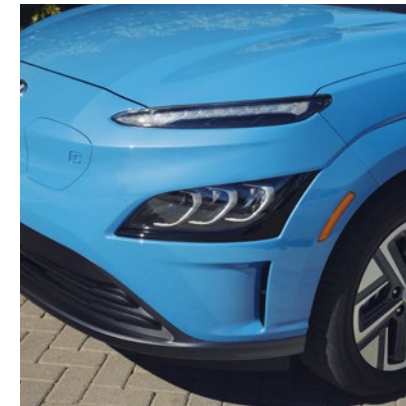
With its striking new front end and rear design, the KONA Electric's beauty extends well beyond efficiency. New body-coloured wheel arch cladding frames the expressive 17" alloy wheels, while the bold choices of exterior paint colours add to the allure.



Redesigned rear bumper



Standard 17" alloy wheels



Available LED headlights



Available LED tail lights



Redesigned front bumper

# Welcome to your comfort zone.

Surround yourself with comfort all winter long thanks to the standard heated front seats, heated steering wheel and available heated rear seats. When the temperature outside rises, the KONA Electric keeps you feeling cool with its available ventilated front seats and an available power sunroof to let a fresh breeze in.



Ultimate model shown.



Standard leather-wrapped heated steering wheel



Standard heated front seats  
Available ventilated front seats



Available heated rear seats



Up to 1,296 litres of cargo capacity with rear seats folded down.

# Technology that drives enjoyment.

The new KONA Electric offers a range of available technologies to help make your driving experience enjoyable, whether you're heading out for something to eat or shopping across town.

See a real-time status of the battery charge, available driving range and the energy flow between the drivetrain components via the touch-screen display. With the standard navigation system, you can also map out your range to find charging stations.



Standard 10.25" full digital instrument cluster



Available wireless charging pad ▼



Available head-up display



Standard 10.25" touch-screen with navigation system



Available harman/kardon® premium audio system



10.25" touch-screen shown with Apple CarPlay™. Standard Apple CarPlay™ and Android Auto™ with wired connectivity

# Ultimate convenience. Ultimate connectivity.

The KONA Electric offers standard Bluelink<sup>®</sup>, our connected vehicle system that conveniently keeps you connected with your Hyundai via the smartphone app and offers a suite of services at the press of a button.

This innovative connected system gives you the ability to remotely lock/unlock and start your vehicle, adjust climate controls, keep track of your vehicle's health with smart diagnostic tools and so much more.



CLIMATE

Remote climate control

## SOS

SOS emergency and roadside assistance



Automatic collision notification



Remote lock/unlock



Find my car



Local search



Real-time diagnostics



Find a dealer

## 3 YEAR

Complimentary 3-year subscription on equipped models





# Hyundai SmartSense™

Our suite of available Hyundai SmartSense™ safety features includes a range of camera, radar and motion detection technologies to provide you with added peace of mind.

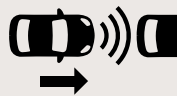
## Standard features:



Tire Pressure Monitoring System



Rear Occupant Alert



Forward Collision-Avoidance Assist with Pedestrian and Cyclist Detection



Lane Departure Warning with Lane Keeping Assist



Lane Following Assist



Blind-Spot Collision-Avoidance Assist



Rear Cross-Traffic Collision-Avoidance Assist



Adaptive Cruise Control with traffic stop and go



Driver Attention Warning



Parking Distance Warning - Reverse



Safe Exit Warning

## Available features:



Highway Driving Assist



Parking Distance Warning - Front



High Beam Assist

# Find the KONA Electric that is right for you.

## Preferred

Standard equipment includes:

### Performance features:

- Electric powertrain (FWD) 201 hp
- Button-type shift-by-wire gear selector
- Brake regenerative control paddles
- 4-wheel disc brakes
- Multi-link rear suspension
- 100 kW charging capacity
- EV fast charging port
- Battery Temperature Management System
- Heat Pump System

### Exterior features:

- 17" alloy wheels
- Roof side rails
- Rear privacy glass
- Front solar glass with tinted sunband

### Interior features:

- 10.25" full digital instrument cluster
- Heated front seats
- Heated steering wheel
- Leather-wrapped steering wheel

### Multimedia/Technology:

- 10.25" touch-screen navigation system with wired Apple CarPlay™ and Android Auto™

### Safety features:

- Adaptive Cruise Control with traffic stop and go
- Forward Collision-Avoidance Assist with Car, Pedestrian and Cyclist Detection
- Blind-Spot Collision-Avoidance Assist
- Rear Cross-Traffic Collision-Avoidance Assist
- Driver Attention Warning
- Safe Exit Warning
- Lane Keeping Assist
- Lane Following Assist
- Parking Distance Warning — Reverse

## Optional:

- Two-tone exterior paint

## Ultimate

Includes Preferred standard equipment plus:

### Exterior features:

- LED headlights (low and high beam)
- LED tail lights
- Power tilt-and-slide sunroof
- Rain-sensing windshield wipers

### Interior features:

- Leather seating surfaces
- Ventilated front seats
- Heated rear seats
- 8-way power adjustable driver's seat including 2-way power lumbar support
- Interior ambient light (foot lamp)
- Auto-dimming rearview mirror with HomeLink® and compass
- Front passenger's auto-up/down window with pinch protection
- LED interior illumination (map lights, room lights and cargo light)

### Safety features:

- Highway Driving Assist
- Parking Distance Warning – Forward/Reverse
- High Beam Assist

### Multimedia/Technology:

- harman/kardon® premium audio with 8 speakers
- Head-up display
- Wireless charging pad▼
- HD radio

# Colours and wheels.

## Single-tone exterior colours\*



**Atlas White**



**Phantom Black**



**Cyber Grey**



**Galactic Grey**



**Surfy Blue**  
Available on Ultimate model only



**Pulse Red**  
Available on Ultimate model only



**Misty Jungle**  
Available on Ultimate model only

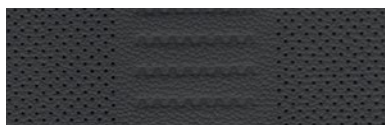


**Dive-in Jeju**  
Available on Ultimate model only

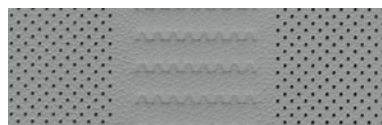
## Interior colours\*



**Black interior with black cloth**  
Standard on Preferred model



**Black interior with black leather**  
Standard on Ultimate model  
(not available with Dive-in Jeju exterior colour)



**Black interior with grey leather**  
Standard on Ultimate model  
(Dive-in Jeju exterior colour only)  
Available on Ultimate model  
(Atlas White, Phantom Black and Surfy Blue exterior colours only)

## Two-tone exterior colours\*

The Preferred model features optional contrasting roof colours for added style. Choose between the following to customize your KONA Electric:



**Phantom Black roof**  
Pair with Atlas White



**Phantom Black roof**  
Pair with Cyber Grey



**Phantom Black roof**  
Pair with Pulse Red



**Phantom Black roof**  
Pair with Misty Jungle



**Phantom Black roof**  
Pair with Surfy Blue



**Phantom Black roof**  
Pair with Dive-in Jeju

## Wheel



**17" alloy wheel**

\*Exterior, interior and roof colour options and/or availability may change without notice. Choice of interior colour is dependent on model and/or exterior colour selection. Colours shown are for reference only and may vary from the actual hue. Visit [hyundaicanada.com](http://hyundaicanada.com) or see your dealer for details.

# Accessories.



## Premium all-weather cargo tray

Protect your interior cargo area with style. This durable, custom-fit premium cargo tray protects from spills and messy loads while helping keep your cargo area looking new for years to come.



## Entry guard

Make first impressions count. Welcome passengers to your cabin with these stainless steel entry guards featuring the KONA logo. Set of four.



## Door pocket clear film

A clear protective film that lies behind the door handle to help prevent paint damage to this commonly scratched area.



## Premium all-weather floor liners

Premium all-weather floor liners were designed to cover the interior carpet providing maximum protection against the elements that other mats cannot offer. Their unique and durable design features a non-slip surface for added comfort and a long-lasting premium look. Remove carpet mats prior to installation.



## Winter wheel and tire packages

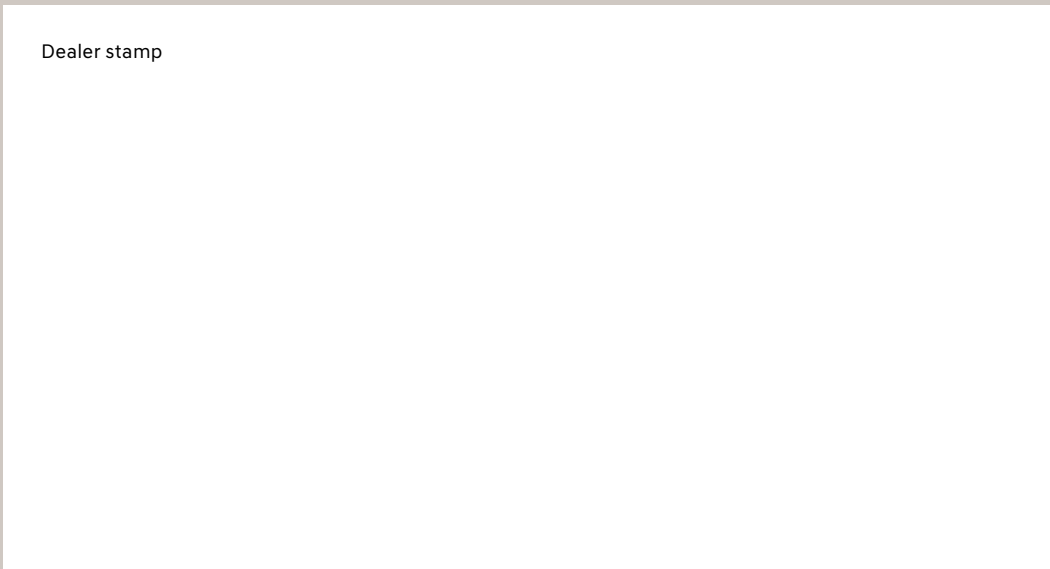
Winter tires have specialized rubber and tread to handle the cold temperatures resulting in better traction, handling and braking. Mount your tires on a set of Hyundai steel wheels and spare your alloy wheels from the corrosion caused by salt and slush.



## Side visors

Complement your vehicle with a sleek and durable set of side visors that will help reduce glare while providing you with fresh air. Custom-made for your vehicle using high quality reinforced tinted acrylic plastic, these visors will look good on your vehicle for years to come.

<b>5</b> YEAR	<b>100,000 km</b> Comprehensive Limited Warranty <sup>1</sup>	<b>5</b> YEAR	<b>100,000 km</b> Emission Warranty
<b>5</b> YEAR	<b>100,000 km</b> Powertrain Warranty	<b>5</b> YEAR	<b>Unlimited km</b> Roadside Assistance Program <sup>11</sup>
<b>8</b> YEAR	<b>160,000 km</b> Electric Vehicle System <sup>111</sup>		



## One of the best-backed warranties in Canada.

You will see that a number of our vehicles have received multiple awards from the most reputable third-party organizations, so you can take their word when it comes to the quality of our vehicles. This quality is equally matched by the quality of our warranty. We stand confidently behind our products to give you ultimate peace of mind with a 5-year/100,000 kilometre Comprehensive Limited Warranty<sup>1</sup>. We also provide a 5-year/Unlimited kilometre Roadside Assistance Program<sup>11</sup> featuring flat tire changing, lockout service and more. Just one toll-free call away, 24 hours a day.

<sup>1</sup>The Hyundai name, logos, product names, feature names, images and slogans are trademarks owned or licensed by Hyundai Auto Canada Corp.. Specifications, features, illustrations, accessories, materials and equipment and all other information shown in this brochure are based on the latest information available at the time of publication. Although descriptions are believed to be correct, accuracy cannot be guaranteed. Hyundai Auto Canada Corp. reserves the right to make any changes or modifications at any time, without notice or obligation, including, without limitation, in colour, specifications, features, accessories, materials, equipment and models. Some vehicles are shown with optional equipment. All Hyundai warranties have no deductible. <sup>11</sup>Hyundai's Comprehensive Limited Warranty coverage covers most vehicle components against defects in workmanship under normal use and maintenance conditions. <sup>111</sup>Hyundai's 24-Hour Roadside Assistance Program is a limited service and does not cover certain costs or expenses. Roadside Assistance is not a warranty. <sup>1111</sup>EV System includes motor, inverter unit, VCM, reduction gear, DC/DC converter, onboard charger and connector, trickle charge cable, in-cable control box and high-voltage battery. <sup>11111</sup>All-electric driving range of 415 kilometres based on a battery capacity of 64.0 kWh and battery usage rate of 17.4 kWh/100 km. Calculated based on a fully charged battery. Based on manufacturer testing and used for comparison purposes only. Actual range may vary based on driving conditions and the addition of certain vehicle accessories. <sup>111111</sup>Not all devices will be compatible. See Owner's Manual for further details. <sup>1111111</sup>Apple CarPlay™ may not be available on all devices and may not be available in all countries or regions. Visit [www.apple.com](http://www.apple.com) for further details and any applicable limitations. Apple and Apple CarPlay are trademarks of Apple Inc.. <sup>11111111</sup>Android Auto™ may not be available on all devices and may not be available in all countries or regions. Visit [www.android.com](http://www.android.com) for further details and any applicable limitations. Android and Android Auto are trademarks of Google Inc.. <sup>111111111</sup>Vehicle is equipped with the ability to access SiriusXM radio. Does not include subscription. The SiriusXM™ name is a trademark of SiriusXM Satellite Radio Inc.. <sup>1111111111</sup>Bluelink® includes 3 years of service without charge. The Bluelink service is available for new vehicle purchases and leases subject to the Bluelink subscription terms and conditions. Only use Bluelink and corresponding devices when safe to do so. Cellular and GPS coverage is required. Features, specifications and fees may vary by model and are subject to change. For more on details and limitations, visit [hyundaicanada.com](http://hyundaicanada.com) or your authorized Hyundai dealer. Bluetooth® word mark and logos are registered trademarks owned by Bluetooth SIG, Inc.. HomeLink® is a registered trademark of Johnson Controls Inc.. harman/kardon® is a registered trademark of Harman International, Inc.. All other trademarks and trade names are those of their respective owners. <sup>11111111111</sup>Level 2 and level 3 charging cables not included. All charging times are approximate. Some images shown with special graphic effects.

Hyundai Auto Canada Corp.  
[hyundaicanada.com](http://hyundaicanada.com)

