

Tигра

Two seats. Use them wisely.

For a copy of this brochure in large print, Braille or on audio tape, please call 0845 600 1500. We can also be contacted using our textphone service on 18001 08456 785 785.

Every effort has been made to ensure that the contents of this publication were accurate and up-to-date at the time of going to press (September 2005).

Vauxhall vehicles are equipped with components manufactured by various General Motors operating units and outside suppliers. The Company reserves the right to alter specifications and withdraw products from sale without notice.

Any such alterations will be notified to Vauxhall retailers at the earliest opportunity; please consult your local retailer for the latest information.

The specifications detailed within this brochure are not necessarily applicable to alternative models such as Special Editions. Details of any such models will be contained in specific literature or found on the Vauxhall website.

The colours reproduced in this brochure may vary slightly from the actual paint colour or trim material due to the limitations of the printing process.

Please note that Vauxhall retailers are not the agents of Vauxhall Motors Limited and are not authorised to bind the Company by any specific or implied undertaking or representation.

It is advisable to ensure that your motor insurance policy provides adequate cover for additional fitted options and accessories.

As part of Vauxhall's policy of environmental care, this brochure is printed on paper manufactured using Elemental Chlorine Free pulps from specially farmed, sustainable timber resources.

All rights reserved. No part of this publication may be reproduced in any form or by any means, without the prior written permission of Vauxhall Motors Limited.

Published September 2005 (BMB)

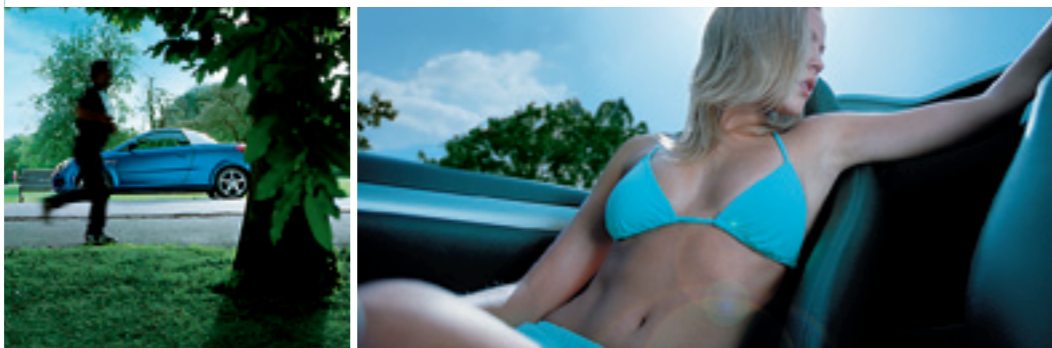
Vauxhall Motors Limited, Luton LU1 3YT
www.vauxhall.co.uk

VM0505732



Contents

- 02 Intro
- 04 Style
- 08 Interior
- 10 Drive
- 12 Roof
- 14 Tigra
- 15 Tigra Sport
- 16 Options and Accessories
- 18 Colours and Trim



Self-indulgent? Sadly, you can only have one best friend. At a time

Remember the smell of freshly cut grass? Or how blue the sky looks after summer rain? The world becomes more vibrant when you experience it through an open roof. Your biggest dilemma? *Deciding who gets to come along for the ride.*

SHARE IT, BUT NOT WITH EVERYONE

The real world is rarely as simple as black or white, open and shut. It's not as certain as that, nor are the unpredictable vagaries of the British weather. Which is why the Tigra has been designed to give you two answers to every question. It's a coupé – smart, head-turning and well-insulated against mother nature's gloomier mood swings. Yet, within a few seconds, it's also a roadster – and the elements suddenly become a whole lot more elemental. Both Tigra and Tigra Sport models come with the

powered roof as standard. You can also choose between zingy 1.4i 16v and punchy 1.8i 16v petrol engines or a super-economical 1.3CDTi 16v turbo diesel. Whichever Tigra you choose, people are going to notice. And can you think of a better way to enjoy the experience of that specially tuned chassis?

SELFISH SPACE



This brochure covers only those models listed in the contents. Some of those shown include options and accessories available at extra cost. And not all of the features described are available on every model. So please check in the Specification insert for further details. From time to time, we also offer alternative Tigra models such as Special Editions, featured in their own separate literature or found on the Vauxhall website: www.vauxhall.co.uk

A perfect fit
for the life you live
Take control of your space

Just where does it all go? How does a coupé become a roadster and still leave a boot that's hungry for luggage? You could spend hours pondering the question, but the answer is simple: *'compromise' just isn't a Tigra word.*



GOOD LOOKS

IT'S ALL ABOUT TAKING CONTROL

Good looks can get you so far, but real talent takes you further. Tigra looks great, of course. Strong athletic lines and a low, sporty stance project plenty of the right sort of visual attitude. But this is a car that has also been engineered for the incessant demands of busy modern life. The electro-hydraulic retractable hard top opens or closes in under 20 seconds. As a coupé you'll find Tigra benefits from a modern, spacious cabin. Yet even in roadster form, with

the roof stowed, there's still loads of space for shopping and bags under the power-operated boot lid. Not qualities that you would associate with more traditional roadsters. And the logic behind this is simple: why should you have to downsize your lifestyle just because you want a sporty car? With Tigra, you're not expected to.



DEMAND
ATTENTION

People are staring
Don't you just hate it when that happens?

DON'T FOLLOW THE AGENDA

Yes, they're looking. Stealing surreptitious glances as they walk past, staring greedily from inside other, more ordinary cars. Are they envious? Jealous? Or just wanting to see the magical hard top do its thing? Tigris' looks demand attention, making it a car for those who want to rise above the crowd. As a coupé its distinctive roof profile works in harmony with the strong lines of the body to create some real visual impact. And as a roadster there's no mistaking the serious intent of Tigris' wide,

purposeful look and those chunky alloy wheels. Once people know how good it is to drive, they'll be *really* jealous. And that tingling sensation? Don't worry, it's just the 'that's my car' feeling. You'll get used to it.





The simple things in life are best So why shouldn't you have some simple luxuries?

Tigra Sport model illustrated features optional Leather pack, Technical pack, air-conditioning and Smoke pack.

TOUCH OF LUXURY



Great design meets a superb driving experience in Tigra's cabin. Modern, upmarket materials and well-thought-out ergonomics ensure it looks and works brilliantly. All Tigra models come with standard sports seats incorporating six-way adjustment to ensure the optimum driving position, while the leather-covered steering wheel adds a welcome touch of luxury to the driving experience.

A selection of powerful audio systems, including MP3-compatible units, ensures that you can always choose the perfect soundtrack for every road. And a wide range of optional extras makes it easy to personalise and enhance Tigra, from powerful air-conditioning through to heated leather seats.



COME ALIVE

For grown-ups who go out to play Where would you like to go next?

Tigra harvests plenty of respect on crowded city streets – but it really comes alive as you head out into the wide-open spaces and discover the soul of a true sports car. With powerful engines and a superb chassis you'll discover a brilliant dynamic driving experience *and that Tigra is far more than just a pretty face.*



YOU'RE DESTINED TO TAKE CONTROL

At the heart of every Tigra lies a brilliant chassis, specially tuned for high stability, impressive grip and superb ride comfort. Perfectly matched with a tough roadster bodyshell, speed sensitive, power-assisted steering and wide, low profile tyres, it also gives you a real sense of control. And each of the three engines – two petrol and a high-tech common rail turbo diesel – offer outstanding response. For rapid progress, choose the 1.4i 16v with Twinport technology for strong performance and impressive economy. For a real shove in the back, try the 125PS 1.8i 16v, taking Tigra Sport from 0-62mph in just 9.4 seconds. And if you prefer to spend even less time at the pumps, go for the super-economical 1.3CDTi 16v turbo diesel, for stacks of mid-range punch and a massive 61.4mpg in the combined driving cycle.

Can't decide between coupé or roadster Have both

When it's sunny, everybody wants a roadster. And when it's raining? Don't be surprised if everybody wants a Tigra. Because with a roof this clever, *Tigra's got everything covered.*



CHANGE YOUR CAR TO SUIT YOUR MOOD

So where's the nearest reflective shop window? Tigra's magical transformation from coupé to roadster is pure street theatre, something you'll want to see yourself. Operated by an ultra-smooth electro-hydraulic system, Tigra's hard top folds away in seconds under the protection of the boot lid, which closes to leave the handsome roadster lines unbroken. It's quick, easy and completely painless. The advanced roof construction also means that you'll find some serious luggage capacity beneath

the power-operated boot lid, a commodious 440 litres of room with it up and a very impressive 250 litres when it's lowered. And with a deep boot even bulky coolboxes fit with ease. Even more space is found in a deep stowage compartment behind the seats that gives another 70 litres of storage volume. Sexy and sensible, that's Tigra.



MAKE AN UNMISTAKABLE STATEMENT

Tigris

Tigris is all about turning heads – without costing the earth. All versions come with the electro-hydraulic retractable hard top, power-operated boot lid and excellent standard equipment.

Model illustrated above is shown with Yellow Punch solid paint. Air-conditioning and CD 30 MP3 audio unit illustrated below are optional at extra cost.



Electro-hydraulically operated retractable hard top in body colour / Matt aluminium style hoops behind seats / Sporty suspension / 15-inch alloy wheels (steel spare) / 185/60 R 15 low profile tyres / Sports seats / Stereo radio/CD player with multi-function display panel / Steering wheel mounted audio controls / Leather-covered steering wheel / Dark metallic-effect centre console / Anti-lock Braking System (ABS) / Driver's and passenger's front and side-impact airbags / Remote control central deadlocking / Active-safety head restraints / Door-to-door illumination / Tilttable steering column / Driver's and passenger's seat height adjusters / Chrome-effect interior trim details / Hydraulically operated boot lid / Electrically operated windows / Electrically adjustable/heated door mirrors



Tigris sport

For people who want a little something extra: Tigris Sport. It's the zestful essence of Tigris to the max, featuring enhanced equipment levels, a stylish contrasting colour targa roof bar and unique cabin trim details.

16-inch alloy wheels (steel spare) / 205/50 R 16 ultra-low profile tyres / Matt Star Silver targa roof bar (body-colour on Star Silver models) / Remote control alarm / Stainless steel exhaust tailpipe (1.8i 16v only) / Front fog lights / Windbreak / Retaining net for storage area behind seats / Stereo radio/CD with MP3 capability / Alloy-effect centre console and interior trim details / Aluminium sports pedals / Leather-covered sports steering wheel / Alloy-effect boomerang struts on lower centre console / Platinum-coloured seatbelts



Model illustrated features optional Leather pack and Antigua two-coat pearlescent paint.

TAKE EVERY CHANCE TO LIVE LIFE TO THE FULL



Tigra Sport model illustrated features optional factory-fit VXR Styling pack one (consisting of front lower spoiler, side sills/rear lower skirt and boot lip spoiler), 17-inch alloy wheels, Antigua two-coat pearlescent paint and Leather pack. The individual elements of VXR Styling pack one can also be ordered as retailer-fit accessories.

Celebrate your individuality Create a Tigra that reflects your personality with Vauxhall by Design.

Vauxhall by Design is all about giving you more choice. It allows you to select your new car and personalise it to your individual tastes and preferences. Designed to enhance every aspect of Tigra ownership, you can choose from a range of factory-fit options (including VXR Styling pack one), in addition to a wide variety of useful accessories. There is also a host of other styling accessories produced by auto design specialists Irmischer International – a name synonymous with sporting flair for more than 30 years.

For more information, ask your Vauxhall retailer for the Car and Accessory Price Guide, or alternatively visit our website at: www.vauxhall.co.uk/accessories



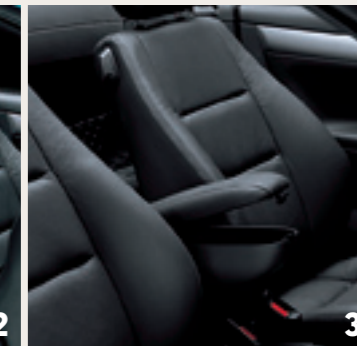
Tigra Sport model illustrated features Irmischer front lower skirt extensions, stainless steel door handle covers, rear wing spoiler and 17-inch Sport Star alloy wheels available as retailer-fit accessories only.



1



2



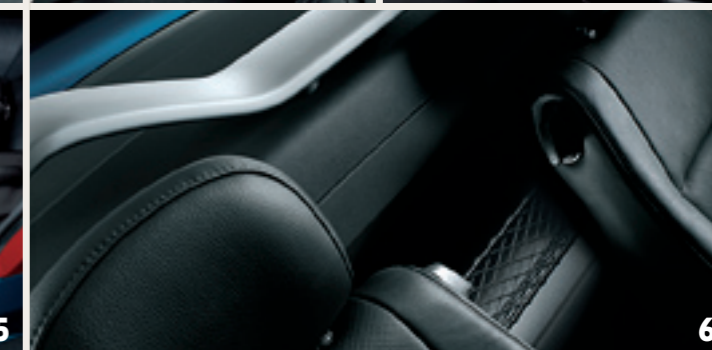
3



4



5



6

Roof down

Roof up

OPTION PACKS

Leather pack (Tigra Sport only) 1 Leather seat facings, head restraints and door trim insert panels / Electrically heated sports seats

VXR Styling pack one Front lower spoiler / Side sills/rear lower skirt / Boot lip spoiler

Technical pack Cruise control / Driver information centre incorporating check control warning display and multi-function trip computer

Smoker pack Ashtray / Cigar lighter

Travel pack (standard on Tigra Sport) 1 / Retaining net for storage area behind seats **6**

ACCESSORIES

Interior – Cabin Area Floor mats – rubber or velour / Leather holdall – shaped to fit in stowage compartment behind seats **2** / Leather armrest **3** / Retaining net for storage area behind seats **6**

Interior – Load Area Bootliner / Luggage bags **4-5**

See specification insert for full list of accessories.



irmischer

Tigra Sport model features Irmischer rear wing spoiler, sports silencer with twin round stainless steel tailpipes, carbon-effect panels for rear bumper, stainless steel door handle covers and 17-inch Delta alloy wheels.

Specification Colour and trim combinations



Leather Charcoal



Splice/Elba cloth Charcoal

Splice/Elba cloth Charcoal/Antigua

Splice/Elba cloth Charcoal/Red

Alpha cloth/Morrocana Silver/Charcoal

Flame Red



Yellow Punch



Star Silver



Metro Blue



Robo Green



Black Sapphire



Antigua



Air Blue



TARGA ROOF BAR COLOUR COMBINATIONS

Model	Solid		Two-coat metallic*		Two-coat pearlescent*			
	Flame Red	Yellow Punch	Star Silver	Metro Blue	Robo Green	Black Sapphire	Antigua	Air Blue
Tigra	●B	●B	●B	●B	●B	●B	●B	●B
Tigra Sport	●S/OB	●S/OB	●B	●S/OB	●S/OB	●S/OB	●S/OB	●S/OB

● = Standard. ○ = Option available at no extra cost. * = Optional at extra cost. B = Body-colour. S = Matt Star Silver.

EXTERIOR AND INTERIOR COLOUR COMBINATIONS

Model	Solid		Two-coat metallic*		Two-coat pearlescent*			
	Flame Red	Yellow Punch	Star Silver	Metro Blue	Robo Green	Black Sapphire	Antigua	Air Blue
Tigra								
Splice/Elba cloth Charcoal	●	●	●	●	●	●	●	●
Splice/Elba cloth Charcoal/Antigua	-	●	●	-	-	●	●	-
Splice/Elba cloth Charcoal/Red	●	-	●	-	-	●	-	●
Tigra Sport								
Alpha cloth/Morrocana Silver/Charcoal	●	●	●	●	●	●	●	●
Leather Charcoal*	●	●	●	●	●	●	●	●

● = This colour and trim combination is available. - = This colour and trim combination is not available. * = Optional at extra cost.