

NEW INSIGNIA *VXR*

2014 Models Edition 1



Proud Sponsor of Home Nations Football



INJECTED WITH ATTITUDE

When it comes to identity the New Insignia VXR SuperSport has plenty to say. And there's no doubt that it says everything about performance and style in equal measure. New subtle yet aggressive styling and design cues perfectly compliment the awesome 2.8 litre engine V6 Turbo that delivers 325PS. A massive 435Nm of torque 0-60mph acceleration in just under 5.6 seconds*. And with an unrestricted top speed, the new SuperSport now realises this VXR's true performance potential.**





*Manual hatch and saloon models only.

**Where permitted. General Motors UK Ltd. does not condone irresponsible driving.

DYNAMIC PERFORMANCE NEEDS DYNAMIC STYLE

Strapping yourself into the driver's seat of the New Insignia VXR SuperSport has never been so enjoyable. Awe-inspiring on every level, the degree of comfort and technology are there for all to see. Standard across the range, Navi 900 IntelliLink infotainment unit features a wealth of modern technologies, including our new touch-pad designed specifically to bond driver with machine.





1. Oozing with style. New Insignia VXR SuperSport offers maximum comfort in its dynamic sporting interior. Recaro sports front seats, VXR gear knob and floor mats compliment the impressive interior styling and sporting heritage.

2. Ultimate connectivity. The Navi 900 IntelliLink unit complete with satellite navigation brings your digital life into your car. You can use IntelliLink to connect to your smartphone or tablet, select music and make calls all at the touch of a screen or swipe of our first ever touch-pad.

3. VXR Instruments. New Insignia VXR SuperSport takes care of the driver information via a high quality 8-inch colour digital display with G-Force meter. Additional red accented instruments add to the impressive line-up of modern technologies.

POWER TO THRILL PRESENCE TO INSPIRE

The New Insignia VXR SuperSport is not just about absolute power. But absolute control. An improved adaptive all-wheel drive chassis, electronic Limited Slip Differential, HiPerStrut front suspension system and high-performance Brembo brakes put the driver in total command. Because we understand that with power, comes responsibility.

Familiar yet unmistakably unique, the exterior styling provides instant road presence and says more about this cars performance than words ever could.





DESIGNED TO PERFORM



Make no mistake. New Insignia VXR SuperSport is a truly exceptional machine. The all-aluminium, 24-valve V6 turbo features dual variable valve timing. Each piston is individually oil-cooled. The exhaust valves are sodium-filled and the throttle is electronically controlled.

The single, twin-scroll turbocharger feeds the mixture via twin individual variable inlet manifolds. And the end result? Seamless, explosive power delivery. Through a computer-controlled, Nürburgring-proven, 4X4 chassis that puts you in total control. Absolutely.

Interior features

- Recaro sports front seats with Morrocana-trimmed side bolsters
- Driver's and front passenger's front, side-impact and curtain airbags
- Three-spoke flat-bottomed leather-covered sports steering wheel with VXR logo
- 8-inch digital instrument display
- VXR floor mats • VXR sports pedals
- VXR leather-covered gear knob
- VXR alloy-effect door sill covers
- Navi 900 IntelliLink satellite navigation system with 8-inch colour touch-screen
- Digital radio
- Stereo radio/CD/MP3 CD player
- Aux-in, SD card and USB sockets
- Audio streaming
- Bluetooth® connectivity
- Multi-function touch-pad infotainment controller
- Ambient interior lighting
- Automatic lighting control
- Electro-chromatic anti-dazzle rear-view mirror
- Single-zone electronic climate control
- Cruise control • Trip computer
- Remote control security alarm system

Exterior features

- VXR front grille and air dam/bumper
- VXR side sills
- VXR rear bumper and rear skirt
- VXR rear lip spoiler (hatchback/saloon)
- VXR rear roof spoiler (Sports Tourer)
- Performance-optimised exhaust system tuned for sound
- Intelligent Adaptive Forward Lighting incorporating bi-xenon headlights
- Rain-sensitive windscreen wipers
- Tyre pressure monitoring system

Engine

2.8i 24v ECOTEC-V6 Turbo (2792cc)

Maximum power:
325PS (239kW) @ 5250rpm

Maximum torque:
435Nm (321 lb.ft.) @ 5250rpm

Compression ratio: 9.5:1

Bore/stroke: 89.0mm x 74.8mm

• Single, twin-scroll turbocharger with intercooler

• Variable valve timing

Performance (manufacturer's figures)

Maximum speed (mph):

	Man.	Auto
Hatch/Saloon	168	165
Sports Tourer	165	162

Acceleration 0-60mph (secs):

Hatch/Saloon	5.6	5.9
Sports Tourer	5.9	6.2

Fuel economy and emissions

mpg (litres/100km)

	Man.	Auto
Urban driving:		
Hatch/Saloon	17.9 (15.8)	17.9 (15.8)
Sports Tourer	17.7 (16.0)	17.2 (16.4)

Extra-urban driving:

Hatch/Saloon	37.2 (7.6)	36.2 (7.8)
Sports Tourer	35.8 (7.9)	35.8 (7.9)

Combined figure:

Hatch/Saloon	26.6 (10.6)	26.4 (10.7)
Sports Tourer	25.9 (10.9)	25.7 (11.0)

CO₂ emissions: g/km

Hatch/Saloon	249	251
Sports Tourer	255	259

Chassis, suspension and brakes

- HiPerStrut front suspension system
- Adaptive 4X4: Permanent four-wheel drive system with FlexRide
- Brembo ventilated/cross drilled, front disc brakes: 355mm diameter
- Brembo 4-piston front brake calipers
- Ventilated rear disc brakes: 315mm diameter
- Electronic Limited Slip Differential

Transmission

- Six-speed manual gearbox
- Six-speed automatic with paddle-shift facility

Wheels and tyres

- 19-inch V-spoke alloy wheels with 245/40 R19 ultra-low profile tyres
- 20-inch five Y-spoke bi-colour alloy wheels with 255/35 R20 ultra-low profile tyres, optional at extra cost
- Emergency tyre inflation kit in lieu of spare wheel

Insurance group (ABI recommended)

- 36E

COLOURS AND TRIMS

The New Insignia VXR SuperSport is available in a range of colours specially selected to reflect its sporting pedigree.

SOLID



Power Red (two-coat)

BRILLIANT*



Summit White

TWO-COAT METALLIC*



Carbon Flash



Silver Lake

TWO-COAT PEARLESCENT*



Asteroid Grey



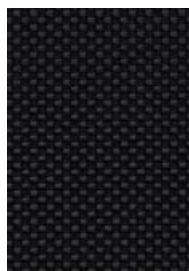
Arden Blue

*Optional at extra cost.

Due to the limitations of the printing process, the colours reproduced may vary slightly from the actual paint colour. As a result, they should be used as a guide only. Your Vauxhall retailer has a comprehensive display of our paint samples.

Awe-inspiring on every level, the high levels of comfort are there for all to see. Track cloth trim with Morrocana bolsters as standard with a Leather Pack option available at extra cost.

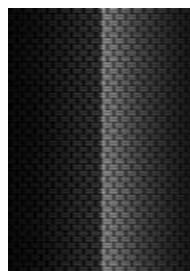
TRACK/MORROCANA TRIM WITH RECARO SPORTS FRONT SEATS



Jet Black Track seat inserts.

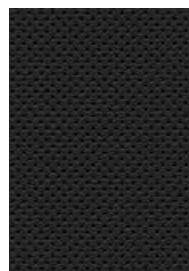


Jet Black Morrocana bolsters.



Diamo Black Décor mouldings.

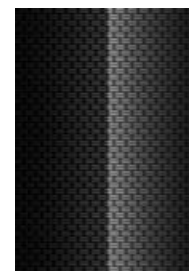
SIENA LEATHER TRIM WITH RECARO SPORTS FRONT SEATS



Jet Black Siena Leather seat inserts.



Jet Black Siena Leather seat bolsters.



Diamo Black Décor mouldings.

NEED MORE VXR?



Then check us out online. To really immerse yourself in the VXR experience log-on and prepare to be blown away at: www.vxr.co.uk



Scan this QR code with your smartphone for more information. Don't forget to download a QR reader from your app store first.

Vauxhall Lifetime Warranty

We're so confident in Vauxhall quality and reliability that we are now able to offer a lifetime warranty. Available to the first owner of all new Vauxhall passenger cars, it's valid for the lifetime of the vehicle up to a maximum of 100,000 miles*. In addition, our warranty also includes Vauxhall Assistance for 12 months from first registration and six years body panel anti-perforation warranty. Full details of Vauxhall's warranties including terms, conditions and exclusions can be obtained through any authorised Vauxhall retailer or go to: www.vauxhall.co.uk/warranty

LIFETIME
WARRANTY 100,000 MILE



Proud Sponsor of Home Nations Football



*Vauxhall Lifetime Warranty covers lifetime ownership of first car owner, 100,000 mile limit, annual check required. The warranty excludes wear and tear and serviceable items and the vehicle must be serviced in accordance with the manufacturer's servicing schedule to continue the lifetime warranty. Terms and conditions apply. Offer available to all Vauxhall passenger cars (this offer does not apply to car-derived vans) from 1st August 2010.

Every effort has been made to ensure that the contents of this publication were accurate and up-to-date at the time of going to press (November 2013). Vauxhall vehicles are equipped with components manufactured by various General Motors operating units and outside suppliers. The Company reserves the right to alter specifications and withdraw products from sale without notice. Any such alterations will be notified to Vauxhall retailers at the earliest opportunity; please consult your local retailer for the latest information. The specifications detailed within this brochure are not necessarily applicable to alternative models such as Special Editions. Details of any such models will be contained in specific literature or found on the Vauxhall website. Please note that Vauxhall retailers are not the agents of General Motors UK Limited and are not authorised to bind the Company by any specific or implied undertaking or representation. It is advisable to ensure that your motor insurance policy provides adequate cover for additional fitted options and accessories. Please note accessories shown are for illustrative purposes only. As part of Vauxhall's policy of environmental care, this brochure is printed on paper manufactured using Elemental Chlorine Free pulps from specially farmed, sustainable timber resources. All rights reserved. No part of this publication may be reproduced in any form or by any means, without the prior written permission of General Motors UK Limited.



VAUXHALL