

NEW INSIGNIA

Range Highlights



Proud Sponsor of Home Nations Football







DESIGNED TO ATTRACT, ENGINEERED WITH SUBSTANCE

New Insignia is an exceptional car. As the bold successor to the car that attracted more than 40 industry awards – including the prestigious European Car of the Year title – the latest model raises the Insignia driving experience to a whole new level. And there's plenty of driver-focused technology too. Digital radio and Bluetooth® technology are standard across the range and a sophisticated interface transforms the way you interact with the vehicle. Touch-pad-controlled, fully customisable infotainment options provide a seamless link to your business and leisure worlds, creating a truly interactive travelling environment. With advanced driver assistance systems, premium interiors and refined ride and responsiveness, New Insignia represents a persuasive restatement of the car's established values.

Fresh design cues signpost the new model's individuality. There are three distinct body styles, each providing a stylish interpretation of Insignia's inherent functionality. And powerful new tax efficient engines – including a choice of cutting edge diesel units that deliver class-leading CO₂ emissions as low as 99g/km. Blending power with poise, dynamic handling with genuine road presence, New Insignia encapsulates the style and substance at the heart of our brand.

Company car drivers can experience New Insignia for themselves via our 3 Day Test Drive programme. Please see back cover for more details.



The vehicles illustrated within this brochure may not necessarily represent the correct final UK specification and not all the features described are available on every model.





GREAT DESIGN STARTS WITH THE SMALLEST DETAILS

Insignia drivers expect quality and attention to detail. The new car's interior comfortably exceeds these high expectations. The new fascia trims and seats are carefully tailored and textured in a choice of hand-picked materials. With its seamless connectivity and premium, user-friendly design, New Insignia's instrumentation delivers outstanding convenience and efficiency; the controls themselves are now smarter and easier to use. Better still, you can now operate portable multimedia devices from the leather-covered steering wheel and monitor safety functions via the new optional digital instrument cluster. You can even specify a keyless entry and start system available as an option on all models. When it comes to comfort, multi-adjustable ergonomic front seat options provide unparalleled levels of support.



Ergonomic sports front seats. Ideal for drivers covering long distances, the optional ergonomic front seats* adjust to suit your body shape and preferred posture by allowing you to fine tune the lumbar support via a four-way adjustment control. You can even extend the seat cushion forward for additional thigh support. Together, these features give your upper body and legs greater support where it's needed most. The seats themselves have won the coveted AGR** seal of approval for helping to prevent the back pain and tension suffered by some car occupants.

*SRi models feature an ergonomic sports driver's seat as standard.

**Aktion Gesunder Rücken e.V (AGR) is an independent panel of ergonomics experts and doctors based in Germany.



Digital instrument cluster. With New Insignia, key information is no longer confined to the centre console display. You can read off infotainment, phone and – on models equipped with the RF900 unit – sat nav menus located within the digital instrument cluster. The controls themselves are conveniently mounted on the steering wheel. Optional at extra cost on models specified with RF700 and RF900 infotainment systems.



RF900 with sat nav. For effortless, hands-free operation, upgrade to RF900, with touch-screen and IntelliLink technology. This advanced, interactive sat nav unit understands voice commands for destination input and also comes with a touch-pad feature together with Pan-European sat nav menus. Standard on Tech Line models.



Touch-pad infotainment control. This new feature works just like the touch-pad on a laptop, providing instant access to menus and applications. It's standard with RF900 and optional with RF700.



BOSE® sound system. Featuring up to nine speakers, the optional BOSE® sound system delivers unprecedented performance, immersing you and your passengers in high quality surround sound.

TECHNOLOGY IN A FINER FORM

It's our most sophisticated infotainment system ever. New Insignia models feature improved infotainment systems as standard right across the range, with Bluetooth® and digital radio on each and every model.

Upgrade to one of two optional IntelliLink units – the RF700 or the RF900 with sat nav – both of which effortlessly connect to your preferred choice of digital media. Using the 8-inch colour touch-screen, it's easy to contact clients and colleagues, friends and family – and access all the information you need, on demand. It's also possible to re-configure the optional displays with a choice of 60 personal favourites. This allows you to prioritise icons and select key information on the centre console display – just as you would on a home computer screen. That's everything from your favourite bands to your most listened-to radio stations.

The built-in smartphone link also works with popular apps like Stitcher® and TuneIn*. This means the IntelliLink technology will effectively communicate with your phone and display the apps on the centrally mounted touch-screen.

As you would expect of such advanced systems, they also offer video playback and audio streaming via Bluetooth-enabled devices. The advanced RF900 sat nav unit with IntelliLink technology is standard on New Insignia Tech Line models.

*You may incur additional costs from your operator for these services and as such we recommend that you check the data costs on your tariff.



POWER WITHOUT COMPROMISE

Supreme efficiency, maximum performance. Appealing to the heart as well as the head, New Insignia engines provide conclusive proof that you can enjoy a dynamic driving experience without sacrificing fuel efficiency and tax performance. Our new 120PS and 140PS 2.0CDTi ecoFLEX turbo diesel engines epitomise this belief. With class-leading CO₂ emissions of just 99g/km* for hatchback models – and a Benefit-in-Kind rate of just 14% – these outstanding units deliver rapid acceleration

FUEL ECONOMY AND EMISSIONS*

Engines	CO ₂ emissions (g/km)			Fuel economy combined (mpg)			Vehicle range (miles)			Benefit-in-Kind rate (2013/14 tax year) [†]		
	Hatchback	Saloon	Sports Tourer	Hatchback	Saloon	Sports Tourer	Hatchback	Saloon	Sports Tourer	Hatchback	Saloon	Sports Tourer
Diesel												
2.0CDTi (120PS) ecoFLEX Start/Stop manual	99	–	104	76.3	–	72.4	1175	–	1114	14%	–	15%
2.0CDTi (130PS) manual	119	119	124	62.8	62.8	60.1	967	967	925	18%	18%	19%
2.0CDTi (130PS) automatic	139	–	–	53.3	–	–	820	–	–	22%	–	–
2.0CDTi (140PS) ecoFLEX Start/Stop manual	99	–	104	76.3	–	72.4	1175	–	1114	14%	–	15%
2.0CDTi (163PS) ecoFLEX Start/Stop manual	114	114	119	65.7	65.7	62.8	1011	1011	967	17%	17%	18%
2.0CDTi (163PS) automatic	139	139	149	53.3	53.3	50.4	820	820	776	22%	22%	24%
2.0CDTi BiTurbo (195PS) Start/Stop manual	124	–	129	60.1	–	57.6	925	–	887	19%	–	20%
2.0CDTi BiTurbo (195PS) automatic	149	–	154	50.4	–	48.7	776	–	749	24%	–	25%
Petrol												
1.8i VVT (140PS) manual	164	–	–	40.4	–	–	622	–	–	24%	–	–
1.4i VVT Turbo (140PS) Start/Stop manual	124	–	131	53.3	–	50.4	820	–	776	16%	–	18%
1.6i SIDI Turbo (170PS) Start/Stop manual	144	–	149	46.3	–	44.8	713	–	689	20%	–	21%
1.6i SIDI Turbo (170PS) automatic	154	–	159	42.8	–	41.5	659	–	639	22%	–	23%
2.0i Turbo (250PS) Start/Stop manual	169	–	174	39.2	–	38.2	603	–	588	25%	–	26%
2.0i Turbo (250PS) automatic	187	–	189	35.3	–	34.9	543	–	537	29%	–	29%

*Provisional data.

[†]Taxation information for guidance only. Please take professional advice on your own tax position.

– Body style and engine combination not available.

Please note: vehicles fitted with optional alloy wheels may have an increase in fuel consumption and CO₂ emissions, with subsequent increases in Benefit-in-Kind rates.

and serious amounts of torque, yet boast a combined fuel consumption figure of over 76mpg*. From a business perspective, New Insignia engines combine highly competitive Whole Life Costs – comprising excellent mpg figures, lower CO₂ emissions, keen P11D values and low Benefit-in-Kind tax rates – with an impressive mileage range of almost 1200 miles. Choice is a key factor, with everything from an exceptional new 1.6 litre SIDI petrol unit producing 170PS and 260Nm of

torque to a range of refined and revised turbo diesels. All models combine flexible performance with outstanding economy and plenty of power in reserve; many models feature our proven Start/Stop system which can help save fuel when you're stuck in traffic. Efficient six-speed transmissions are standard across the range with a choice of manual and automatic units available.



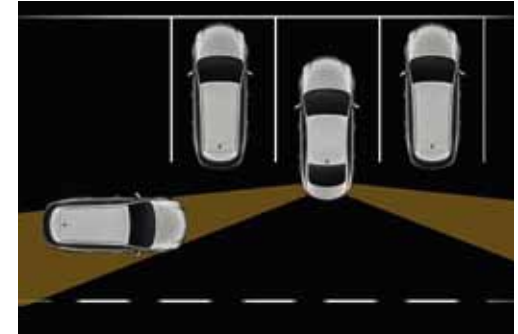


INTELLIGENCE ON BOARD

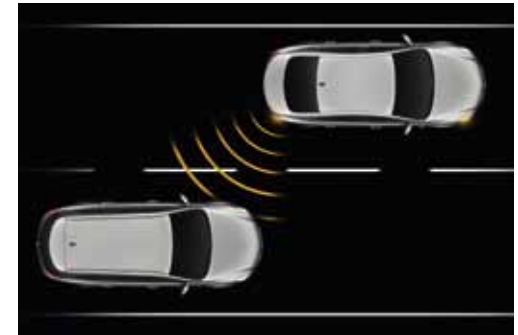
Technology that looks out for you. Modern driving conditions place unique demands on the driver. With this in mind, New Insignia offers a comprehensive array of assistive technology options – designed to keep you fully in control, whatever the situation. Adaptive cruise control with speed limiter function helps maintain a set distance to the car ahead – and can even stop and assist you in pulling away in bumper-to-bumper traffic on automatic models.

In addition to the highly praised front camera system and intelligent Bi-Xenon Adaptive Forward Lighting Plus, New Insignia breaks fresh ground with three additional radar-based systems: lane change alert, side blind spot alert and rear cross traffic alert. All three systems are available as part of the optional Park and Go Technology Pack.

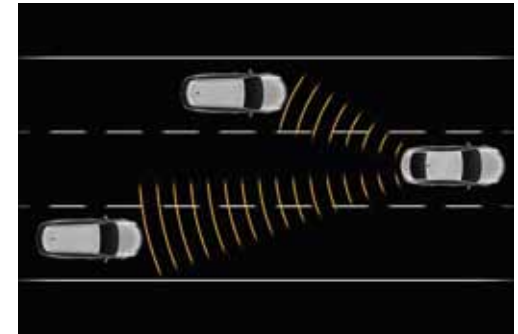
Rear cross traffic alert. As you reverse the car – say in a busy car park or similar, tricky parking situation – this system detects vehicles approaching from the rear and side of your New Insignia. The car's speakers then emit an audible warning signal on the relevant side of the car while an icon appears on one side of the centre console display.



Side blind spot alert. This system helps prevent a potential collision with a vehicle in the lane either side of the car by continuously monitoring both blind spots. If a vehicle enters one of those blind spots, a warning light flashes in the relevant door mirror. If you indicate to change lanes, a warning sound alerts you to the potential danger.



Lane change alert. This new feature monitors the lanes either side of your vehicle. If you indicate to change lanes, a symbol flashes in the appropriate door mirror to warn of any fast-approaching vehicles you may not have seen.





Rear design cues. Viewed from the rear, LED technology complements the front lighting, while the reversing lights are discreetly mounted in a broad chrome signature bar that bisects the dark-style tail light clusters, creating an imposing, wraparound 'wing' motif.

A distinctive image. Bold design cues underline New Insignia's fresh identity. The effect begins with imposing eagle-eye style headlights, complete with imbedded chrome accents and crisp, LED daytime running lights. New-style front fog lights emphasise the poise and width of the car.

THE NEW INSIGNIA RANGE

The line-up has been carefully tuned to the needs of the individual, with models reflecting every aspect of the vehicle's character, from affordable luxury to sheer, sports-biased performance. A key element is choice. The new model comes in hatchback, saloon and Sports Tourer body styles, with most variants available in up to eight different trim levels. The range includes our ultra tax-efficient Tech Line model – specifically tailored to the needs of the business user – with a unique specification that features IntelliLink RF900 technology complete with Bluetooth®, sat nav, touch-pad and touch-screen as standard.



Company car drivers can experience New Insignia Tech Line for themselves via our free 3 Day Test Drive programme. Please see back cover for more details.



NEW INSIGNIA MODEL LINE-UP

The choice starts here. With eight trim levels available there's a New Insignia model to suit all drivers... and all budgets. For more details on model availability please refer to the New Insignia Price and Specification Guide available to download at www.vauxhall.co.uk



Design

Standard features include:

- DMB digital radio
- Bluetooth® connectivity
- USB connection and aux-in socket
- CD/MP3 CD player/stereo radio
- LED daytime running lights
- 16-inch alloy wheels (excluding 2.0CDTi (163PS) models)
- 17-inch 7-spoke alloy wheels (2.0CDTi (163PS) models only)
- Leather-covered steering wheel
- Cruise control
- Trip computer
- Electric four-way lumbar adjustment on driver's seat
- Electric height-adjustable driver's seat
- Remote control security alarm
- Remote control central deadlocking
- Six airbags
- Electronic Stability Programme
- Electronic climate control
- Electric parking brake
- Automatic lighting control
- Electrically operated front windows
- Electrically adjustable/heated door mirrors
- Reach- and rake-adjustable steering wheel

Energy

Additional feature over and above Design:

- 18-inch 10-twin spoke alloy wheels

Limited Edition

Features over and above Design include:

- 19-inch atomic alloy wheels
- VXR Styling Pack comprising: Body-colour front lower spoiler, side sills, rear lip spoiler (not available on Sports Tourer) and rear lower skirt
- VX-Line leather-covered electrically heated sports steering wheel
- VX-Line leather-covered gear knob (manual models only)
- Electrically heated front seats
- Front and rear parking distance sensors
- Front fog lights
- High-pressure headlight washers
- Visible single exhaust tailpipe (excluding 1.8i VVT)

SRI

Features over and above Design include:

- 17-inch 7-spoke alloy wheels
- Lowered and uprated sports suspension
- Sports pedals
- Leather-covered sports steering wheel
- Driver's ergonomic sports seat with extendable seat cushion
- Visible dual branch exhaust tailpipes (2.0i Turbo/2.0CDTi BiTurbo)
- Front fog lights
- Electrically operated rear windows
- Dark-tinted rear glass
- FlexRide (2.0i Turbo/2.0CDTi BiTurbo)

SRI VX-Line

Features over and above SRI include:

- 19-inch atomic alloy wheels
- VXR Styling Pack comprising: Body-colour front lower spoiler, side sills, rear lip spoiler (not available on Sports Tourer) and rear lower skirt
- VX-Line leather-covered electrically heated sports steering wheel
- VX-Line leather-covered gear knob (manual models only)
- Visible single exhaust tailpipe (excluding 2.0i Turbo/2.0CDTi BiTurbo)

SE

Features over and above Design include:

- 17-inch 7-spoke alloy wheels
- Rear seat centre head restraint
- Electrically operated rear windows
- Rain-sensitive windscreen wipers
- Automatic lighting control with tunnel detection
- Anti-dazzle rear-view mirror
- Chrome-effect side window surround

Tech Line

Features over and above Design include:

- Satellite navigation system with touch-screen and touch-pad control
- IntelliLink
- 17-inch 7-spoke alloy wheels
- Anti-dazzle rear-view mirror
- Automatic lighting control with tunnel detection
- Rain-sensitive windscreen wipers
- Electrically operated rear windows
- Chrome-effect side window surround

Elite

Features over and above SE include:

- Dual-zone electronic climate control
- 18-inch 5-twinblade alloy wheels
- Front and rear parking distance sensors
- Front fog lights
- Intelligent AFL with high-pressure headlight washers
- Leather trim with heated front seats
- Eight-way electrically adjustable driver's seat with memory
- Electric height and lumbar adjustment for front passenger's seat
- FlexRide (2.0i Turbo/2.0CDTi BiTurbo)
- Visible dual branch exhaust tailpipes (2.0i Turbo/2.0CDTi BiTurbo)
- Electrically foldable door mirrors
- Dark-tinted rear glass (Sports Tourer models only)

WHEELS AND TYRES

Rounding off. A distinctive set of alloy wheels provide the perfect finish to any model and New Insignia doesn't disappoint. There's a choice of designs for almost every model including 20-inch options on some variants.

STANDARD WHEELS AND TYRES

DESIGN*



16-inch alloy wheels
215/60 R 16 tyres.

DESIGN**/SRI/SE/TECH LINE



17-inch 7-spoke alloy wheels
225/55 R 17 tyres.

ENERGY



18-inch 10-twinspoke alloy wheels
245/45 R 18 tyres.

LIMITED EDITION/SRI VX-LINE



19-inch atomic alloy wheels
245/40 R 19 tyres.

ELITE



18-inch 5-twinblade alloy wheels
245/45 R 18 tyres.

Please note: An emergency tyre inflation kit is standard on all New Insignia models in lieu of a spare wheel. A full-size 17-inch steel spare wheel and tyre is available on most models as an extra-cost option.

*Not available on 2.0CDTi (163PS) models.

**2.0CDTi (163PS) models only.

†Optional at extra cost.

††2.0CDTi (120PS/140PS) ecoFLEX Start/Stop models are supplied with all-weather tyres.

#Available as part of Plus Pack.

OPTIONAL WHEELS AND TYRES†

DESIGN*



17-inch Structure wheels
225/55 R 17 tyres.

SRI**



18-inch 5-twinblade alloy wheels
245/45 R 18 tyres.

SRI



19-inch turbine alloy wheels
245/40 R 19 tyres.

SRI/SRI VX-LINE



20-inch bi-colour alloy wheels
245/35 R 20 tyres.

DESIGN*/SE*/TECH LINE*



18-inch 10-twin spoke alloy wheels
245/45 R 18 tyres.

ELITE



19-inch 10-spoke alloy wheels
245/40 R 19 tyres.

ELITE



20-inch multi-spoke alloy wheels
245/35 R 20 tyres.

INTERIOR TRIMS

Comfort zone. High quality fabrics – including a choice of leather options – underscore New Insignia's premium status.

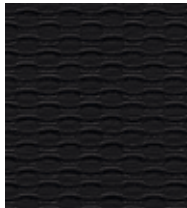
CLOTH TRIM

BLACK LYRA



Standard on Design and Energy models.

BLACK QUANTAM



Standard on SE and Tech Line models.

BLACK RIBBON



Sports front seats. Standard on Limited Edition and SRi/SRi VX-Line models. Optional* on Design, SE and Tech Line models.

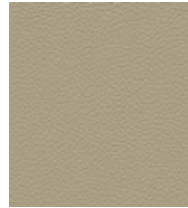
LEATHER TRIM

BLACK SIENA



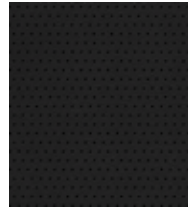
Standard on Elite models. Optional* on Design, SE and Tech Line models.

SADDLE UP SIENA



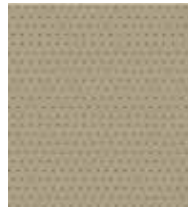
No-cost option on Elite models. Optional* on SE models.

PERFORATED BLACK SIENA



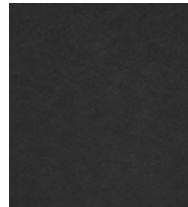
Optional* on Limited Edition, SRi/SRi VX-Line and Elite models.

PERFORATED SADDLE UP SIENA



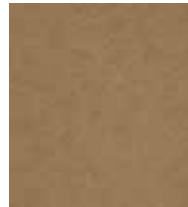
Optional* on Elite models.

BLACK NAPPA



Optional* on SRi/SRi VX-Line and Elite models.

BRANDY NAPPA



Optional* on Elite models.

*Optional at extra cost.

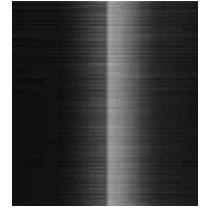
DECOR INSERTS

TRIGO COOL



Standard on Design, Energy and Limited Edition models.

ECHOLON COOL



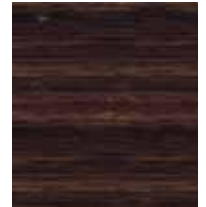
Standard on SE and Tech Line plus Elite models with Black Siena/Siena Perforated leather.

DIAMO BLACK



Standard on SRi/SRi VX-Line models and Elite models with Black or Brandy Nappa.

KIBO WOOD



Standard on Elite models with Saddle Up Siena/Siena Perforated leather.

Due to the limitations of the printing process, the colours reproduced may vary slightly from the actual trim material. As a result they should be used as a guide only.



COLOURS

Premium accents. Prestigious colour options – including eye-catching metallic and pearlescent finishes – provide the perfect complement to New Insignia's smart, contemporary lines.

SOLID



Royal Blue



Power Red (two-coat)

BRILLIANT*



Summit White

TWO-COAT METALLIC*



Carbon Flash



Flip Chip Silver



Aurum Green



Silver Lake



Sovereign Silver

TWO-COAT PEARLESCENT*



Asteroid Grey



Macadamia



Emerald Green



Waterworld

*Optional at extra cost.

Due to the limitations of the printing process, the colours reproduced may vary slightly from the actual paint colour. As a result, they should be used as a guide only. Your Vauxhall retailer has a comprehensive display of our paint samples.



Insignia SRi

Trust Vauxhall

Company Car Driver 3 Day Test Drive



Our free* 3 Day Test Drive programme is open to all Company Car Drivers which allows you to choose any model in the current Vauxhall line-up (excluding all VXR models and Commercial Vehicles), with full insurance cover provided, to give you a meaningful length of time to make an informed decision about your next company car. Our tax efficient Tech Line models have been specifically developed for Company Car Drivers, see page 15 for more details.

To book your free* test drive just log on to www.vauxhall3dtd.co.uk or call **0870 240 4848****



Fleet Customer Services

Our dedicated support services for fleet decision makers include factory demonstrators and information on whole life costs, company car taxation and finance.

For further information please call **0870 010 0651**.

E10 Fuel

E10 fuel is cleared for use in all petrol-engined Vauxhall vehicles excluding models with the 2.2 litre direct injection petrol engine (code Z22YH) used in Vectra, Signum and Zafira models. Owners of these vehicles should continue to use regular unleaded or premium unleaded petrol.

Proud Sponsor of Home Nations Football



For more information...

For a brochure on any Vauxhall model (up to a maximum of three per caller) or location of your nearest Vauxhall retailer please call **0845 600 1500**.

Alternatively, details can be found on our website at www.vauxhall.co.uk

Join us online:



Scan this QR code with your smartphone for more information. Don't forget to download a QR reader from your app store first.

Vauxhall Lifetime Warranty

We're so confident in Vauxhall quality and reliability that we are now able to offer a lifetime warranty. Available to the first owner of all new Vauxhall passenger cars, it's valid for the lifetime of the vehicle up to a maximum of 100,000 miles[†]. In addition, our warranty also includes Vauxhall Assistance for 12 months from first registration and six years body panel anti-perforation warranty. Full details of Vauxhall's warranties including terms, conditions and exclusions can be obtained through any authorised Vauxhall retailer or go to: www.vauxhall.co.uk/warranty

LIFETIME
WARRANTY 100,000 MILE

*The free 3 Day Test Drive programme is open to Company Car Drivers and excludes fuel and lubricants, congestion charges, parking and speeding fines and the £250 insurance excess (if applicable). It features a wide selection of models from the Vauxhall range (excluding all VXR models and Commercial Vehicles and subject to availability). Drivers must be aged 25 years or over, have held a full driving licence for at least a year and hold a major credit card. You will need to have your driving licence (and proof of identity (i.e. passport) where the driving licence is not a photocard licence) when your car is delivered. While every effort will be made to ensure that at least 3 days are provided for the test drive, this cannot always be guaranteed due to delivery and collection dates and timings. Available for UK Mainland only. Terms and conditions apply. **Telephone lines open Monday-Friday 9.00am to 5.00pm excluding Bank Holidays. Calls may be recorded or monitored for quality and/or training purposes.

[†]Vauxhall Lifetime Warranty covers lifetime ownership of first car owner, 100,000 mile limit, annual check required. The warranty excludes wear and tear and serviceable items and the vehicle must be serviced in accordance with the manufacturer's servicing schedule to continue the lifetime warranty. Terms and conditions apply. Offer available to all Vauxhall passenger cars (this offer does not apply to car-derived vans) from 1st August 2010.

Every effort has been made to ensure that the contents of this publication were accurate and up-to-date at the time of going to press (May 2013). Vauxhall vehicles are equipped with components manufactured by various General Motors operating units and outside suppliers. The Company reserves the right to alter specifications and withdraw products from sale without notice. Any such alterations will be notified to Vauxhall retailers at the earliest opportunity, please consult your local retailer for the latest information. The specifications detailed within this brochure are not necessarily applicable to alternative models such as Special Editions. Details of any such models will be contained in specific literature or found on the Vauxhall website. Please note that Vauxhall retailers are not the agents of General Motors UK Limited and are not authorised to bind the Company by any specific or implied undertaking or representation. It is advisable to ensure that your motor insurance policy provides adequate cover for additional fitted options and accessories. Please note accessories shown are for illustrative purposes only. As part of Vauxhall's policy of environmental care, this brochure is printed on paper manufactured using Elemental Chlorine Free pulps from specially farmed, sustainable timber resources. All rights reserved. No part of this publication may be reproduced in any form or by any means, without the prior written permission of General Motors UK Limited.



VAUXHALL