

# SANTA CRUZ

2023



# Because of you.

At Hyundai, we believe that only with you in mind will we be able to provide progress, innovation, sustainability and mobility that evolves the driving experience.

We prioritize research and development in connected and clean mobility solutions, continuing to push boundaries and challenge conventional thinking to bring you a connected experience and a sustainable vision for the future.

We are inspired to build platforms and technology that provide you with more ways to enjoy quality time with our vehicles. To live a comfortable and connected life where you enjoy the journey, not just the destination.

We also tailor our vehicles with features that meet the demands of our Canadian landscape, so you can take on our extreme winters and amazing summers in comfort and with confidence. And, of course, we back our vehicles with one of the best automotive warranties in the industry.

We do all of this because of you.





# Open for endless adventures.

Discover the SANTA CRUZ, the Sport Adventure Vehicle that was designed to open a new world of possibilities that meet your needs in one bold package. By combining SUV style with open-bed versatility, you can enjoy a multitude of benefits all at once without compromise. Roominess with manoeuvrability, check. Towing capability and fuel efficiency, check. Open-bed cargo space and secured lockable storage, check.

Enjoy it all with the SANTA CRUZ — power, capability and versatility when it comes to moving cargo, with comfort and refinement behind the wheel.

# Time to plan your weekend escape.

The SANTA CRUZ delivers power, confidence and fun. With the standard 2.5L Turbocharged engine, it boasts 281 horsepower and an impressive 311 lb.-ft. torque. That kind of power gives the SANTA CRUZ a remarkable towing capacity of up to 5,000 lbs. The 8-speed Wet Dual Clutch Transmission with paddle shifters enhances fuel efficiency and torque capacity while delivering a truly fun driving experience.

## Standard 2.5L Turbocharged GDI engine

281 horsepower      311 lb.-ft. torque

Up to 5,000 lbs towing capacity



### Standard HTRAC™ All-Wheel Drive with multi-terrain control modes

For the ultimate in handling, performance and traction, enjoy our HTRAC™ All-Wheel Drive system. It allows you to select the appropriate traction setting that best suits your current driving conditions with three dedicated terrain modes. Choose from Snow, Mud or Sand.



#### SNOW mode

Optimized for snow-covered and slippery roads. This mode will distribute the driving force of the vehicle based on road conditions to help suppress wheel slippage.



#### MUD mode

Optimized for muddy, rutted or uneven terrain. In Mud mode, sensors can instantly detect wheel slippage and automatically redirect torque to the wheel with the most traction, so that you can keep moving despite the hazardous driving conditions.



#### SAND mode

Optimized for loose sand or deep gravel. Special algorithms developed for sand driving secure the right gear and help ensure each wheel receives the right amount of torque at the right moment to deliver optimal tire traction.

### Standard Drive Mode Select

With Drive Mode Select, choose the driving mode that suits your preferred driving style. The different modes adjust the engine, transmission and steering control settings.



#### NORMAL mode

Best for relaxed, everyday driving.



#### SPORT mode

Sport mode adjusts the throttle and steering response for greater agility and a more responsive drive.



#### SMART mode

Smart mode automatically adjusts between all available modes based on driver input to optimize your drive.

# SUV refinement meets open-bed versatility.

The SANTA CRUZ delivers next-level SUV versatility thanks to the flexibility of an open bed, so you can easily load it up with gear and get to your next adventure.



## Standard sliding and lockable tonneau cover

The integrated sliding and lockable tonneau cover is lightweight, yet durable, with strong aluminum construction that can hold up to 220 lbs. It offers privacy and security when closed and then rolls neatly into a canister in order to maximize your cargo area.



## Standard adjustable rail and cleat system with six tie-down points

Six standard tie-down points, including four rotating D-rings, help make sure items stay secure. A rail system runs along each side with an adjustable cleat system for additional mounting points.



## Standard rear bumper steps

Integrated rear bumper steps are located on the corner, centre and top to provide easy access to the bed. Each one can hold up to 440 pounds.



## Standard lockable under-bed waterproof storage compartment

The underfloor storage is sealed to keep water and dirt out, so no matter what activities you have in mind your items will stay clean. Conversely, you can also use the storage for wet and muddy items, so your cabin stays clean — easily washing away dirt with the 1-way drain plug.



**Bed length (upper):** 1,230 mm

**Bed length (lower):** 1,323 mm

**Bed length (tail gate open):** 1,900 mm

**Bed width (max):** 1,368 mm

**Bed width (between wheelhouse):** 1,085 mm

**Bed height:** 488 mm

# Ready when you are.

The tough yet alluring modern design of the SANTA CRUZ makes efficient use of its compact dimensions by offering excellent manoeuvrability, making it a joy to park in challenging urban areas. The hidden LED daytime running light design draws you in, becoming visible within the grille only when illuminated. Available 20" alloy wheels are framed by rugged wheel arches that hint to its off-road capability.



Standard hidden LED daytime running lights



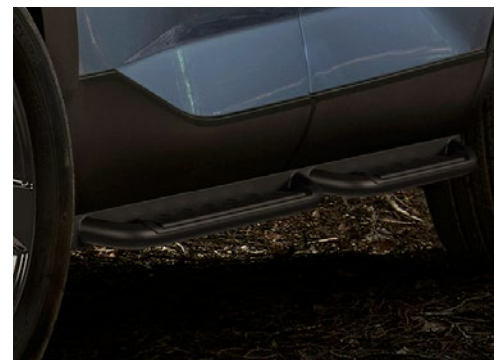
Available T-shaped LED tail lights



Black front/rear skid plates



Available 20" black alloy wheels



Side steps

# Stay comfortable all journey long.

The interior design of the SANTA CRUZ prioritizes ergonomics and features that deliver comfort all journey long. The driver's seat is positioned for optimal leg space and can be further customized with an available 8-way power driver's seat with lumbar support. The centre stack is angled slightly towards the driver for ease of view and features standard dual-zone automatic climate control, so you and your co-adventurer can choose your own temperature to your own liking.



Ultimate 2.5T model shown.



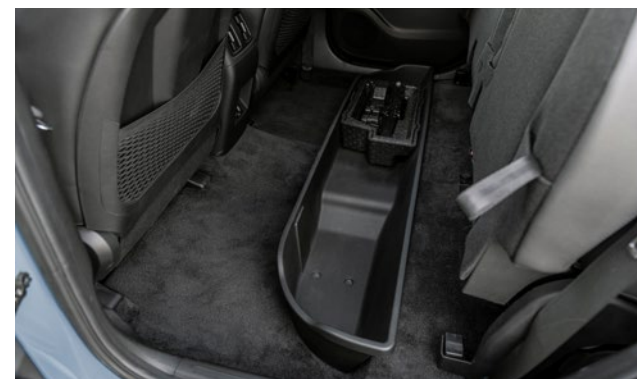
## Standard heated front seats and available ventilated front seats

Enjoy the drive, not just the destination. Warm up with heated front seats and cool off all summer long with available ventilated front seats.



## Standard leather-wrapped heated steering wheel

Bring on early mornings with the comfort of the heated steering wheel.



## Standard 60/40 fold-up rear seat cushions

Rear seat cushions can fold up with a 60/40 split to meet your cargo needs. They also feature removable cargo trays underneath to stash away your gear.

# Advanced technology.

Adding to the comfortable cabin is a wealth of technology that will help keep you connected throughout your journey and make the little things more convenient.



Standard 10.25" touch-screen with navigation and available surround view monitor



Available Bose® premium sound system



Available wireless charging pad\*



Available interior ambient lighting



Standard wired Apple CarPlay™ and Android Auto™



# Ultimate convenience. Ultimate connectivity.

The SANTA CRUZ offers standard BlueLink<sup>®</sup>, our available connected vehicle system that conveniently keeps you connected with your Hyundai via the smartphone app and offers a suite of services at the press of a button.

This innovative connected system gives you the ability to remotely lock/unlock and start your vehicle, adjust climate controls, keep track of your vehicle's health with smart diagnostic tools and so much more.



Remote start with climate control

## SOS

SOS emergency and roadside assistance



Automatic collision notification



Remote lock/unlock



Find my car



Local search



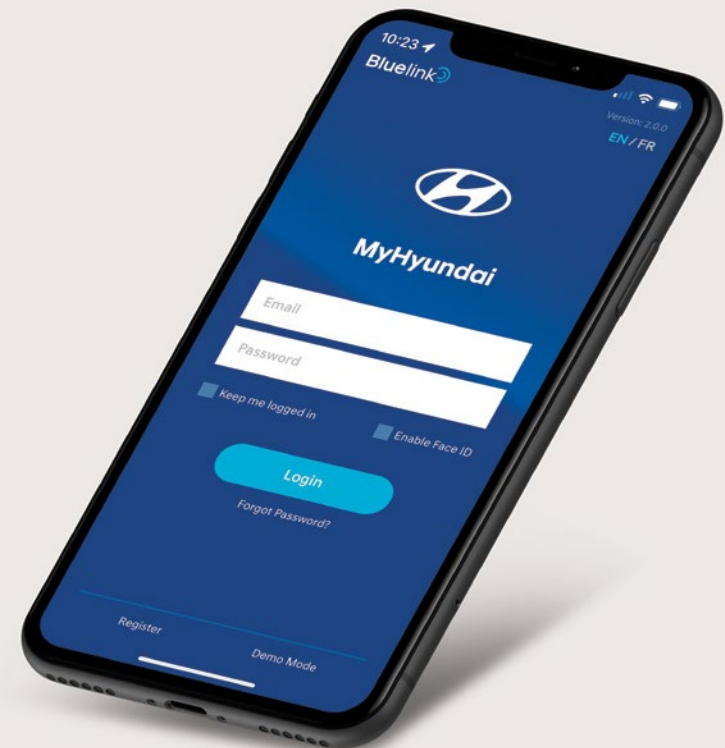
Real-time diagnostics



Find a dealer

## 3 YEAR

Complimentary 3-year subscription on equipped models



# Hyundai SmartSense™

Our suite of available Hyundai SmartSense™ safety features includes a range of camera, radar and motion detection technologies to provide you with added peace of mind.

## Standard features:



Forward Collision-Avoidance Assist (FCA) with Pedestrian and Cyclist Detection



Driver Attention Warning



Blind-Spot Collision-Avoidance Assist



Rear Cross-Traffic Collision-Avoidance Assist



Lane Following Assist



Lane Departure Warning with Lane Keeping Assist

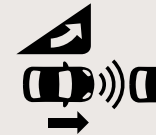


High Beam Assist



Rear Occupant Alert

## Available features:



FCA with Pedestrian, Cyclist and Junction-Turning Detection



Highway Driving Assist



Adaptive Cruise Control with traffic stop and go



Intelligent Speed Limit Assist



Blind View Monitor

# Find the SANTA CRUZ that is right for you.

## Preferred 2.5T

Standard equipment includes:

### Performance features:

- 2.5T Smartstream Turbocharged GDI + MPI 4-cylinder engine
- 8-speed Wet Dual Clutch Transmission with steering wheel-mounted paddle shifters
- Drive Mode Select (Normal, Sport, Smart)
- HTRAC™ All-Wheel Drive with multi-terrain control modes (Snow, Mud, Sand)

### Exterior features:

- 18" alloy wheels
- LED daytime running lights
- LED tail lights
- Automatic headlights
- Solar front glass
- Rear sliding glass window with defroster
- Heated power-adjustable side mirrors
- Body-coloured side mirrors and door handles
- Dark chrome exterior accents (emblem, radiator grille, bumper garnish, front skid plate, tailgate handle)

### Open-bed features:

- Integrated sliding and lockable tonneau cover
- LED bed lighting (1x roof-mounted, 2x side-mounted)
- Adjustable tailgate
- Sidewall storage compartments (driver and passenger side)
- Lockable under-bed waterproof storage compartment
- 115V AC power inverter
- Heavy-duty cargo D-rings (4x)
- Integrated rear bumper side steps
- Adjustable rail and cleat system with six tie-down points

### Interior features:

- 10.25" colour touch-screen navigation system with wired Apple CarPlay™ and Android Auto™
- AM/FM/MP3/SiriusXM™/HD radio audio system with 6 speakers
- Bluelink® connected vehicle system
- Bluetooth® hands-free phone system with voice recognition
- Dual front USB ports (1x power/data and 1x high-power)
- Proximity keyless entry with push-button ignition and remote start
- 4.2" colour LCD instrument cluster display
- Heated front seats
- Heated steering wheel
- 60/40 split second-row tip-up lower seat cushions
- Dual-zone automatic climate control with auto-defogging windshield system
- Power windows with front auto up/down and pinch protection
- Power door locks
- Leather-wrapped steering wheel and shift knob
- Sliding sunvisor with vanity mirrors

### Safety features:

- Forward Collision-Avoidance Assist with Pedestrian and Cyclist Detection (camera-type system)
- Lane Following Assist
- Lane Departure Warning with Lane Keeping Assist
- Blind-Spot Collision-Avoidance Assist
- Rear Cross-Traffic Collision-Avoidance Assist
- High Beam Assist
- Driver Attention Warning
- Electronic parking brake with automatic vehicle hold
- Rear Occupant Alert
- Rearview camera
- Tire Pressure Monitoring System with individual tire indicator
- Temporary compact spare tire
- Intelligent Speed Limit Assist
- Airbags (6) – driver (1), front passenger (1), driver and front passenger side impact (2), front/rear side impact curtains (2)

### Optional: Trend package

- Power sunroof
- Bose® premium audio system with 8 speakers
- Leather seating surfaces
- 8-way power driver's seat with lumbar adjustment
- Dual rear USB ports
- Interior ambient lighting (64 colours)
- LED interior illumination
- Forward Collision-Avoidance Assist with Pedestrian, Cyclist and Junction-Turning Detection (camera and radar-type system)
- Adaptive Cruise Control with traffic stop and go

## Ultimate 2.5T

Includes Preferred 2.5T with Trend package standard equipment plus:

### Exterior features:

- 20" black alloy wheels
- LED projector headlights
- Black front/rear skid plates
- Side steps
- Rain-sensing windshield wipers

### Interior features:

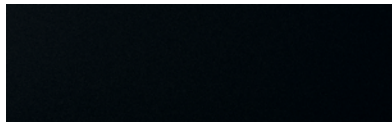
- Ventilated front seats
- Electrochromic auto-dimming rearview mirror with integrated HomeLink® transceiver
- Surround view monitor
- 10.25" full digital instrument cluster
- Wireless charging pad▼

### Safety features:

- Blind View Monitor
- Highway Driving Assist

# Colours and wheels.

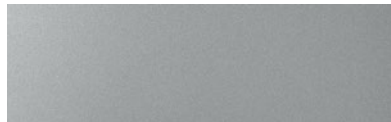
## Exterior colours\*



Twilight Black



Atlas White



Hampton Grey



Sage Grey

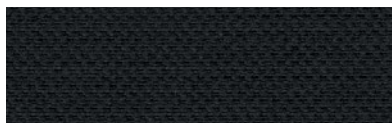


Blue Stone

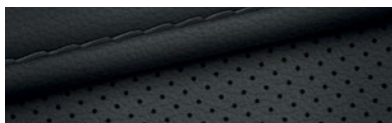


California Sand

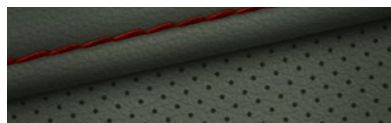
## Interior colours\*



**Black cloth**  
Standard on Preferred model



**Black leather**  
Standard on Preferred model with  
Trend package and Ultimate model



**Dark green leather**  
Available on Ultimate model

## Wheels



**18" alloy wheel**  
Standard on Preferred model  
with Trend package



**20" alloy wheel**  
Available on Ultimate model

\*Exterior and interior colour options and/or availability may change without notice. Choice of interior colour is dependent on model and/or exterior colour selection. Colours shown are for reference only and may vary from the actual hue. Visit [hyundaicanada.com](http://hyundaicanada.com) or see your dealer for details.

# Accessories.



## Premium all-weather floor liners

Premium all-weather floor liners were designed to cover the interior carpet providing maximum protection against the elements that other mats cannot offer. Their unique and durable design features a non-slip surface for added comfort and a long-lasting premium look. Remove carpet mats prior to installation.



## Trailer hitch kit

Designed to meet your towing needs, a Hyundai hitch can accommodate a wide variety of hitch-mounted accessories.



## Cross rails

This durable, quick-locking cross rail system lets you transport cargo easily, without sacrificing interior room.



## Cargo net

A custom-fit cargo net ensures everything you're transporting remains organized and in place by preventing items from sliding around.



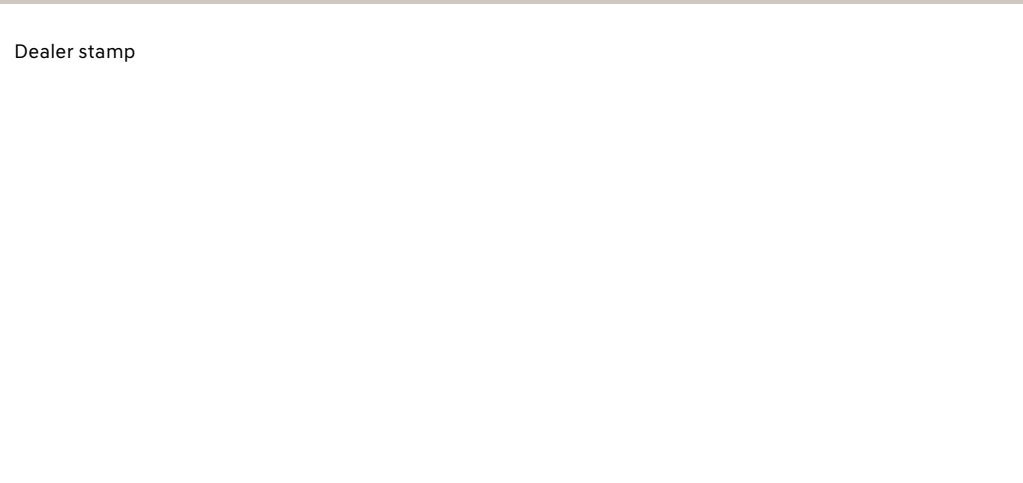
## Mud guard kit

Custom-fit mud guards help keep the dirt and debris of everyday driving where it belongs.



## Side steps

Add function and style to your Hyundai with these attractive black side steps.



## One of the best-backed warranties in Canada.

You will see that a number of our vehicles have received multiple awards from the most reputable third-party organizations, so you can take their word when it comes to the quality of our vehicles. This quality is equally matched by the quality of our warranty. We stand confidently behind our products to give you ultimate peace of mind with a 5-year/100,000 kilometre Comprehensive Limited Warranty<sup>1</sup>. We also provide a 5-year/Unlimited kilometre Roadside Assistance Program<sup>11</sup> featuring flat tire changing, lockout service and more. Just one toll-free call away, 24 hours a day.

**Hyundai Auto Canada Corp.**  
hyundaicanada.com



<sup>TM</sup>/<sup>®</sup>The Hyundai name, logos, product names, feature names, images and slogans are trademarks owned or licensed by Hyundai Auto Canada Corp.. Specifications, features, illustrations, accessories, materials and equipment and all other information shown in this brochure are based on the latest information available at the time of publication. Although descriptions are believed to be correct, accuracy cannot be guaranteed. Hyundai Auto Canada Corp. reserves the right to make any changes or modifications at any time, without notice or obligation, including, without limitation, in colour, specifications, features, accessories, materials, equipment and models. Some vehicles are shown with optional equipment. All Hyundai warranties have no deductible. <sup>1</sup>Hyundai's Comprehensive Limited Warranty coverage covers most vehicle components against defects in workmanship under normal use and maintenance conditions. <sup>11</sup>Hyundai's 24-Hour Roadside Assistance Program is a limited service and does not cover certain costs or expenses. Roadside Assistance is not a warranty. <sup>4</sup>Apple CarPlay™ may not be available on all devices and may not be available in all countries or regions. Visit [www.apple.com](http://www.apple.com) for further details and any applicable limitations. Apple and Apple CarPlay are trademarks of Apple Inc.. <sup>5</sup>Android Auto may not be available on all devices and may not be available in all countries or regions. Visit [www.android.com](http://www.android.com) for further details and any applicable limitations. Android and Android Auto are trademarks of Google Inc.. <sup>6</sup>Vehicle is equipped with the ability to access SiriusXM radio. Does not include subscription. The SiriusXM™ name is a trademark of SiriusXM Satellite Radio Inc.. <sup>8</sup>Bluelink® includes 3 years of service without charge. The Bluelink service is available for new vehicle purchases and leases subject to the Bluelink subscription terms and conditions. Only use Bluelink and corresponding devices when safe to do so. Cellular and GPS coverage is required. Features, specifications and fees may vary by model and are subject to change. For more on details and limitations, visit [hyundaicanada.com](http://hyundaicanada.com) or your authorized Hyundai dealer. <sup>7</sup>Not all devices will be compatible. See Owner's Manual for further details. Bluetooth® word mark and logos are registered trademarks owned by Bluetooth SIG, Inc.. HomeLink® is a registered trademark of Johnson Controls Inc.. Bose® is a registered trademark of Bose Corporation. All other trademarks and trade names are those of their respective owners. Some images shown with special graphic effects.