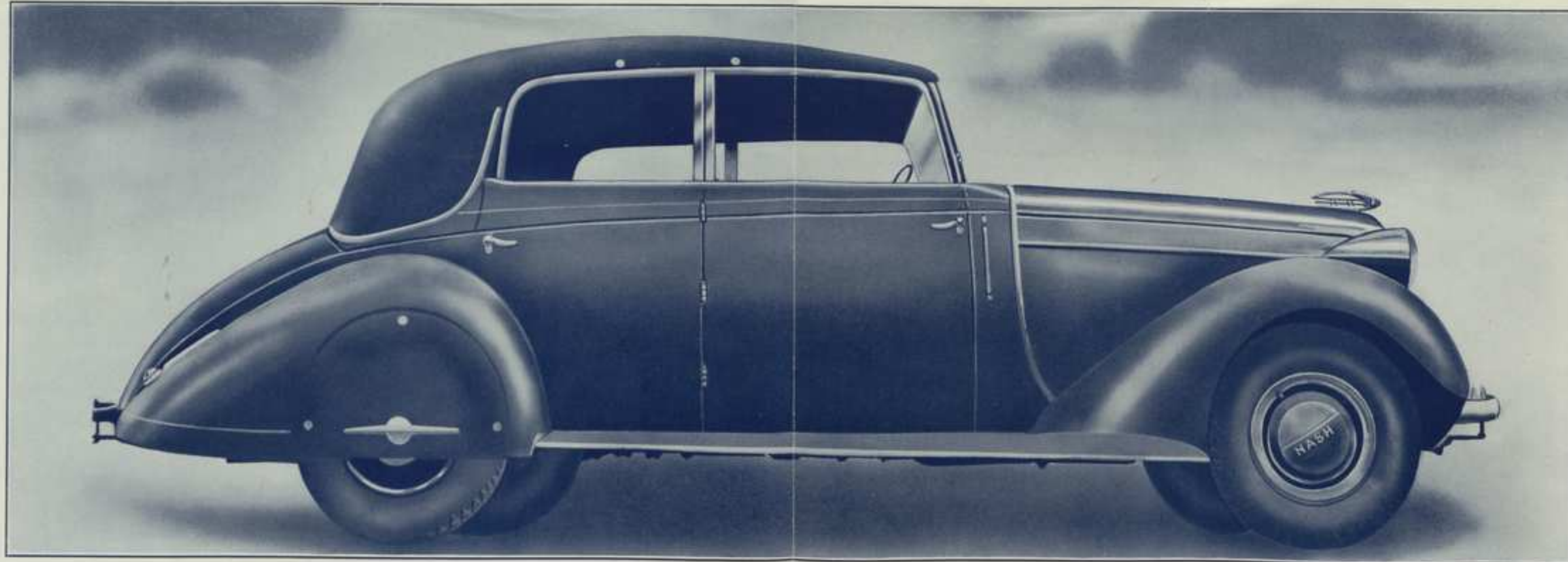


R · S · M (AUTOMOBILES) LTD

PRESENT

THE 1938





Salmon Tickford 4-door Drop-Head "Coronation" Phaeton

This beautiful model is a fine example of the combination of the NASH chassis and English coachwork; the type provided is a convertible phaeton, the conversion from an open to closed car being a matter of a few seconds' operation only.

SPECIFICATIONS

	NASH Ambassador Eight	NASH Ambassador Six	NASH "400"
GENERAL			
Wheelbase	125"	121"	117"
Overall length (with bumpers)	204"	200"	196"
Tread (front)	57"	58"	58"
Tread (rear)	60"	60"	60"
Automatic Cruising Gear (optional at slight extra charge)	Yes	Yes	Yes
BRAKES			
Super-Hydraulic	Yes	Yes	Yes
CONNECTING RODS			
Rifle-bored	Yes	Yes	Yes
COOLING			
Metered pressure system (sealed)	Yes	Yes	Yes
Water temperature controlled by thermostat in cylinder head	Yes	Yes	Yes
CRANKSHAFT			
Number of main bearings	9	7	7
Total bearing surface (sq. ins.)	83.17 sq. ins.	66.34 sq. ins.	66.34 sq. ins.
ELECTRICAL			
Battery capacity—ampere hours	120	105	105
Horn—vibrator type	Yes	Yes	Yes
Air-cooled generator	Yes	Yes	Yes
ENGINE			
Type	Monitor Sealed		
	Twin Ignition	O.H.V.	L-head
Number of cylinders	8	6	6
Bore	79.37	83.82	76.2
Stroke	107.94	112.12	112.12
Piston displacement (cu. ins.)	4270 c.c.	3820 c.c.	3040 c.c.
Brake horsepower at 3400 R.P.M.	115	105	95
R.A.C. horsepower	31.25	27.34	22
Engine mounting on rubber suspension	4-point	3-point	3-point
FRAME			
X-type with box section	Yes	Yes	Yes
Number of cross members	6	6	6
FUEL SYSTEM			
Filter in pump	Yes	Yes	Yes
Carburettor type	Dual down draft	Down draft	Down draft
Air cleaner	Yes	Yes	Yes
Petrol tank capacity in gallons	16½	16½	16½
LIGHTS			
High and low beam headlights, foot operated	Yes	Yes	Yes
Side light position	On mudguards	On mudguards	On mudguards
LUBRICATION			
Full pressure lubrication to all main bearings, connecting rod bearings, piston pins, timing chain, camshaft bearings and cylinder walls	Yes	Yes	Yes
Gear driven oil pump	Yes	Yes	Yes
Crankcase capacity (quarts)	7	7	6
PISTONS AND RINGS			
Aluminium alloy with Invar Struts	Yes	Yes	Yes
Number of oil rings per piston	2	2	2
Number of compression rings per piston	2	2	2
SHOCK ABSORBERS			
Double acting hydraulic, front and rear	Yes	Yes	Yes
SPRINGS			
Synchronized springing	Yes	Yes	Yes
Spring leaves pre-lubricated and fitted with impregnated bronze inserts and steel gaiters	Yes	Yes	Yes
STARTER			
Clutch pedal starter	Yes	Yes	Yes
STEERING			
Worm and double roller type	Yes	Yes	Yes
Steering Shock eliminator	Yes	Yes	Yes
RIDE STABILIZER			
Type—spring steel bar at front	Yes	Yes	Yes
TRANSMISSION			
Synchro-mesh all gears	Yes	Yes	Yes

PRICE LIST

	Series 400	Ambassador "6"	Ambassador "8"
BUSINESS COUPÉ	£ 340	£ 415	£ 450
OPERA COUPÉ	345	420	455
2-DOOR SALOON	345	420	455
6-PASSENGER SALOON	360	435	470
3/5 PASSENGER CABRIOLET	375	450	485

SALMON TICKFORD "CORONATION" PHAETON (available only on Ambassador "8" chassis) £595

Standard equipment includes: Safety glass all round, two windshield wipers, two sun visors, twin horns, spring spoke steering wheel, etc., etc.

De Luxe Equipment is available on all models for £25 extra. This includes cruising gear, conditioned air unit and defroster, electric clock, cigar lighter, etc., etc.

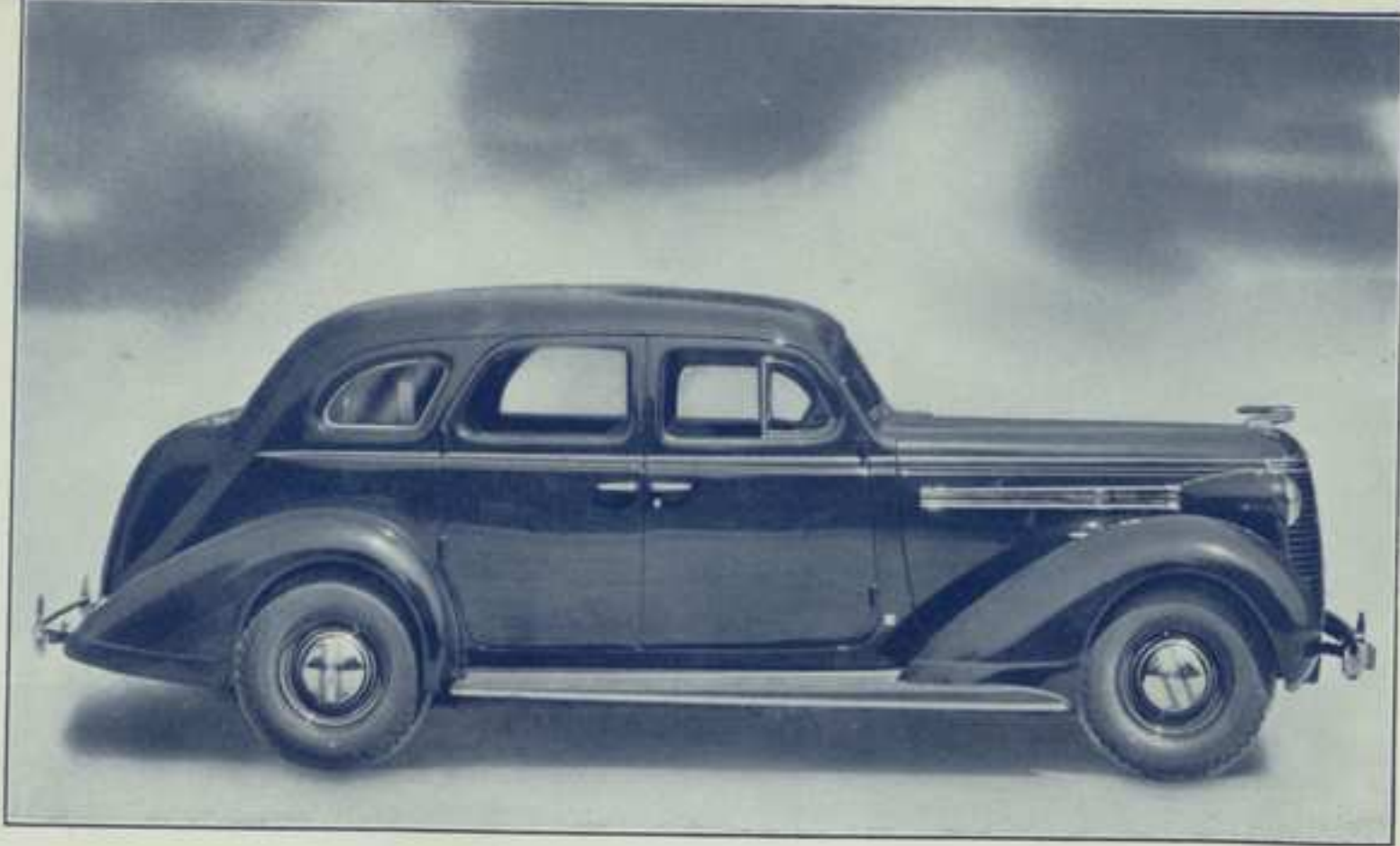
All prices subject to alteration without prior notice.

R. S. M. (Automobiles) LTD.

26, Bruton Street, London, W. 1.

Sole Concessionaires

Tel.: MAYfair 0283



Six-Passenger Saloon

When you sink down in the deep-cushioned seat of a NASH-built Saloon, you will instantly recognize the extraordinary value that Nash has built into these beautiful cars. In this four-door NASH Saloon the richness of the broadcloth fabric; the panelling and tufting, the braiding and edging of the custom-upholstered seats; the fittings; the placing of the ash trays . . . are typical of the luxurious beauty of all NASH-built Saloons. There is plenty of extra leg-room in front and back. In the front compartment the emergency brake is placed at the right side under the cowl, completely out of the way.

- *MODEL 400 - - - - £360
- AMBASSADOR "6" - - - - £435
- AMBASSADOR "8" - - - - £470
- *De Luxe Equipment, including Cruising Gear, Conditioned Air Unit, etc., etc. - £25 extra.

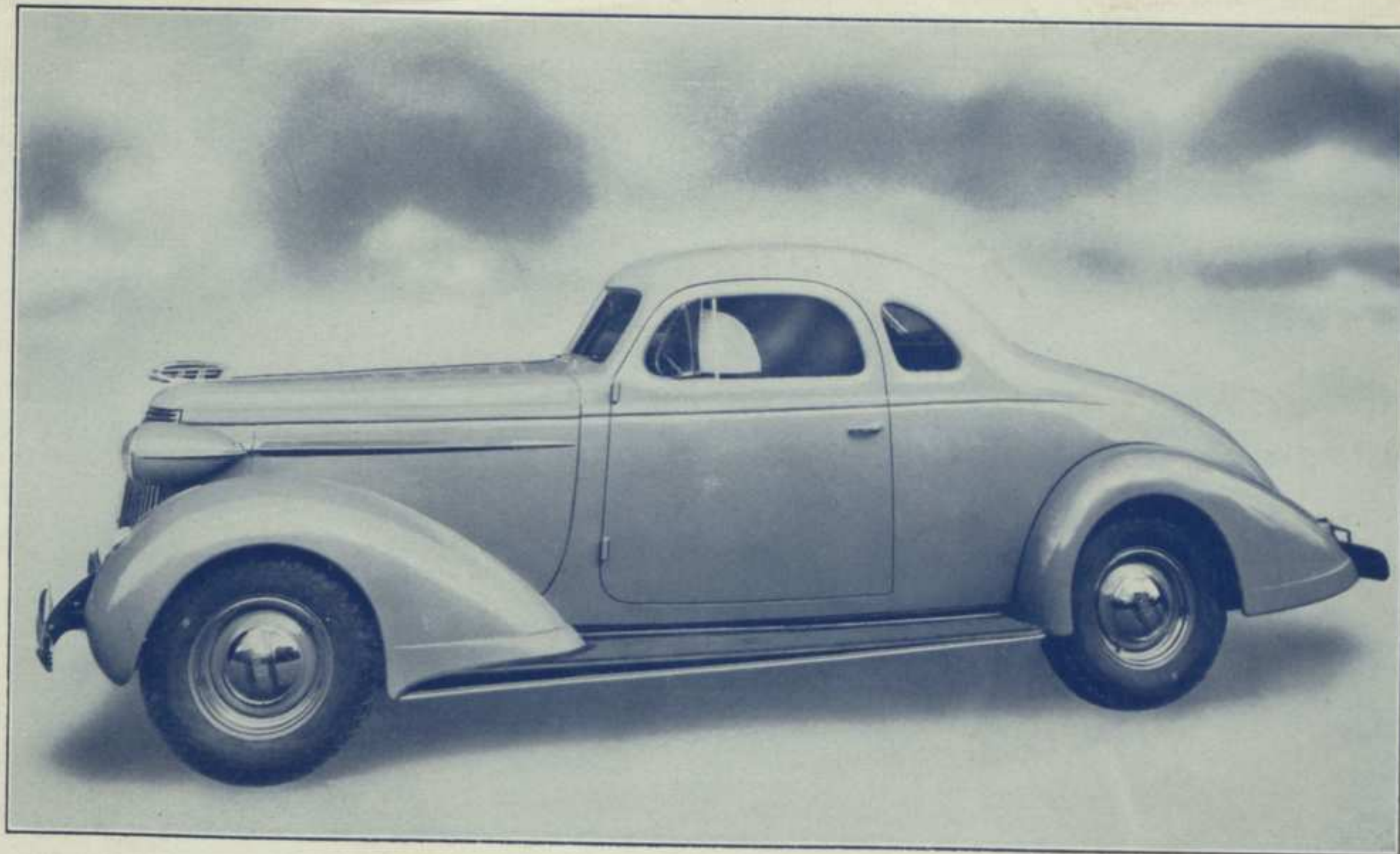


Convertible Cabriolet

This picture can only give you a hint of the luxurious beauty of NASH convertible models. No detail has been overlooked in the building of these luxuriously appointed models. Seating capacity for three people is provided in the front seat, while there is ample provision in the rear dickey seat for two further passengers or a quantity of luggage.

- *MODEL 400 - - - - £375
- AMBASSADOR "6" - - - - £450
- AMBASSADOR "8" - - - - £485
- *De Luxe Equipment, including Cruising Gear, Conditioned Air Unit, etc., etc. - £25 extra.





The Opera Coupé

The Opera Coupé has special features not offered usually in a fixed-head type of body. Two comfortable seats swing out from the rear of the body to provide room for two extra passengers, making the coupé a five-passenger model. The spare tyre is mounted in the rear squab, which likewise provides ample luggage space. When the extra seats are not in use, the space behind the driver's seat is available for luggage. The model is available on all three NASH lines.

*MODEL 400	-	-	-	-	-	£345
AMBASSADOR "6"	-	-	-	-	-	£420
AMBASSADOR "8"	-	-	-	-	-	£455

*De Luxe Equipment, including Cruising Gear,
Conditioned Air Unit, etc., etc. - £25 extra.

