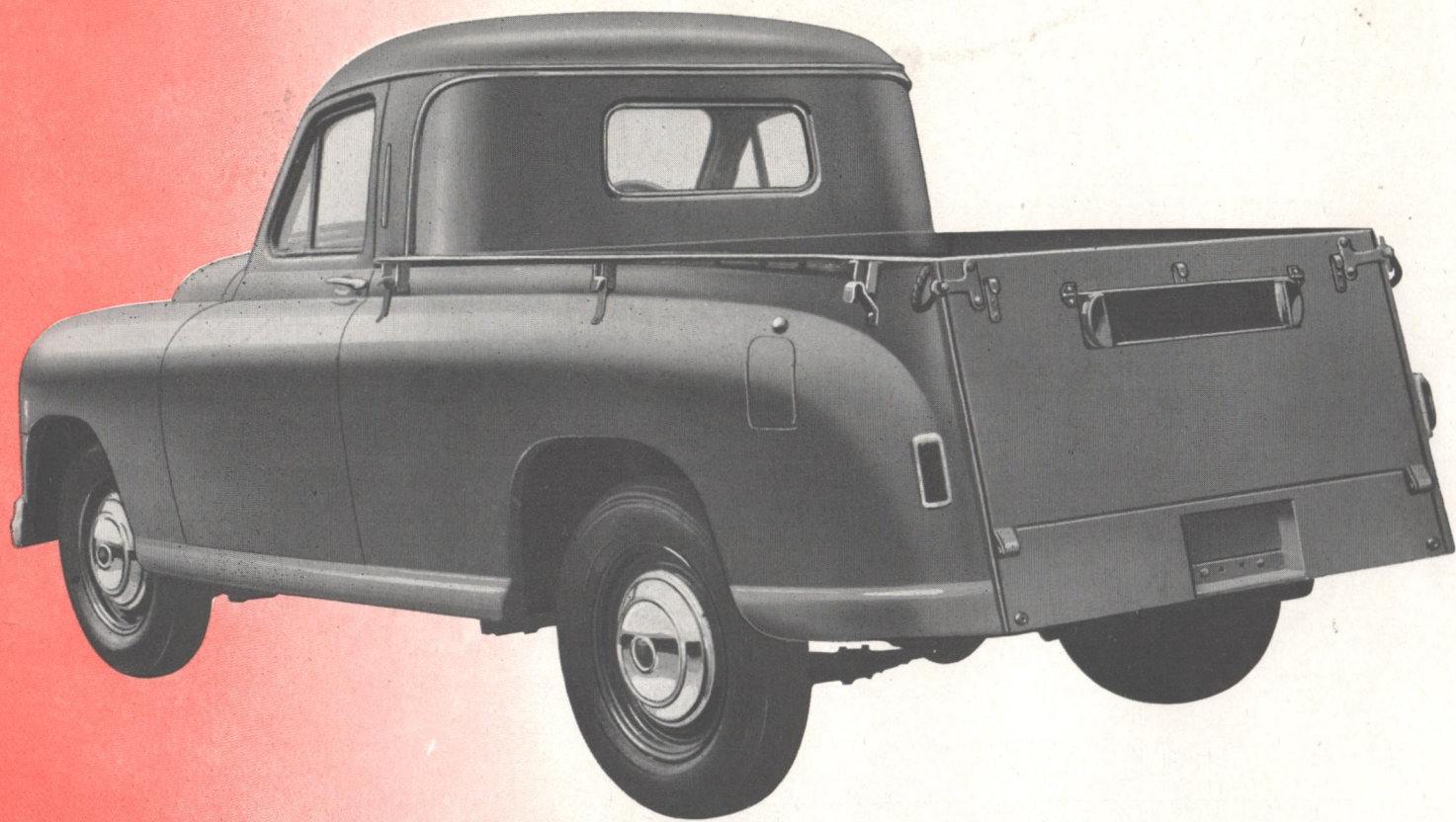


The **STANDARD** *Pick-Up Truck*



THE Standard Pick-up Truck has the same engine and chassis as the famous Standard Vanguard saloon and it has been designed as a general utility vehicle for town or country use.

Practical Pick-up type truck body the rear panel of which is hinged for easy entry and loading. It is supported in the down position by side chains. Provision is made for the easy fitment of a towing attachment. The high ground clearance, sturdy suspension and powerful engine make it the ideal vehicle for carrying out a variety of tasks.

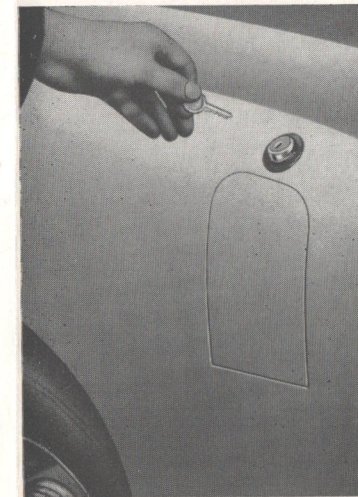
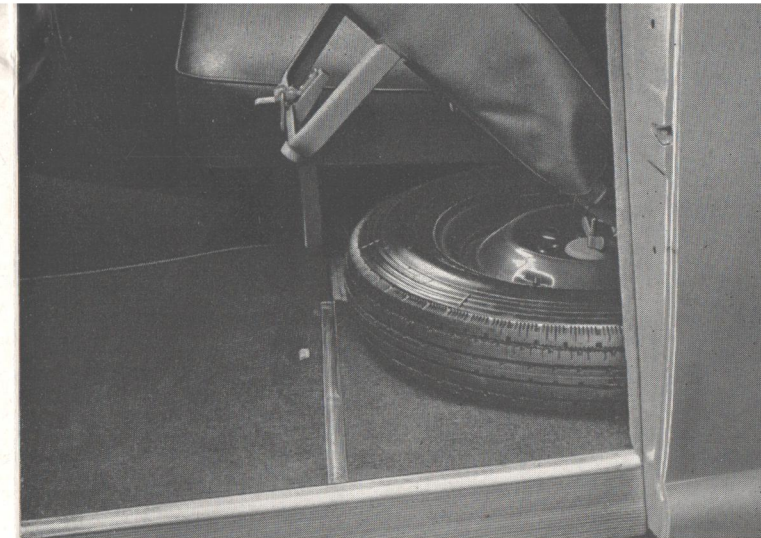


The large amount of space available in the Standard Pick-up Truck for goods, will be seen in the above illustration.

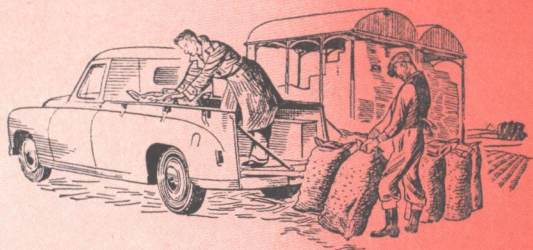
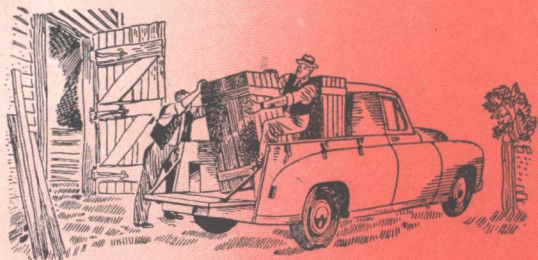
Right: Lashing hooks and hood pole sockets are provided on each side of the body.



The illustration below shows the roomy driver's cabin of the Standard Pick-up Truck with instruments attractively grouped on the fascia panel and anti-draught ventilation by hinged deflector lights in front doors. Notice (right) how the seat is hinged so that spare wheel which is housed beneath is easily reached.



A special lock is provided for the fuel filler cover of the 15 gallon petrol tank, thus ensuring complete security when the vehicle is left unattended.



THE STANDARD MOTOR COMPANY LIMITED
COVENTRY, ENGLAND

SPECIFICATION

BODY FEATURES

Pick-up truck body with 2 door cab. Rear panel hinged for easy access. Sockets for hood poles and lashing hooks are incorporated on either side. Steel panelled, finished in Primer ready for painting. Vee front screen and windows fitted with Triplex toughened glass. Door handles flush fitting, pull-out type. Low level flat floor. **Effective body dimensions.** Length 58" (147 cm.). Width of floor 42" (107 cm.). Height of floor above ground 21" (53 cm.).

Carrying capacity: 12 cwt. (600 kgs.) of goods.

Equipment includes: Instruments grouped in front of driver on fascia panel include: speedometer with trip, electric clock, fuel, water temperature and oil pressure gauges. Concealed lighting, ignition warning light, twin windscreen wipers. Anti-draught ventilation by hinged deflector lights in doors. Air may also be admitted by door controlled from dash. Window winders to both doors. Locks to both doors. An additional lock is provided for the fuel filler orifice. One piece bonnet arranged with lock-release control operated from inside body, to prevent the bonnet being opened when doors are locked. Self-cancelling trafficators controlled from centre of steering wheel. Sunvisors, flush fitting when not in use.

GENERAL DIMENSIONS AND PERFORMANCE

Length 13' 3" (407 cm.). Width 5' 9" (175 cm.). Height (unladen) 5' 6" (168 cm.). Wheelbase 7' 10" (239 cm.). Track (front) 4' 3" (130 cm.). Track (rear) 4' 6" (137 cm.). Tyre Size 6.00—16". Ground clearance—rear axle (laden) 8" (21 cm.). Turning circle 35 ft. (11 metres). Weight (excluding extra equipment): Dry, 22½ cwt. (1,155 kg.); complete with fuel, tools, oil and water, 24¼ cwt. (1,231 kg.). Acceleration (2 up) 10–30 m.p.h. (16–48 km.) 11 secs. fully laden 14 seconds. Maximum climbable gradient fully laden 1 in 3. Petrol consumption 22/24 m.p.g.

CONDITIONS OF SALE.—The goods manufactured by The Standard Motor Company Limited are supplied with an express warranty which excludes all warranties, conditions and liabilities whatsoever implied by Common Law, Statute or otherwise. **Prices.**—The Company reserves the right to vary the list prices at any time and all goods are invoiced at the prices current on day of delivery. **Literature.**—Every precaution has been taken to ensure accuracy but the Company accepts no liability for errors or omissions. **Specification.**—The Company reserves the right on the sale of any vehicle to make before delivery without notice any alterations to or departure from the specification, design or equipment detailed in its various publications.

ENGINE AND CHASSIS DETAIL

Four cylinders. 85 mm. bore × 92 mm. stroke. Capacity 2088 c.c. Compression ratio 6.7. Centrifugally chill cast replaceable cylinder sleeves, fitted in direct contact with cooling water. Aluminium alloy split skirt pistons. 60 ton steel connecting rods. Precision bearings. Three bearing counter-balanced crankshaft. Overhead valves, push rod operation. Patented design ensuring silence. Thermostatically controlled cooling system. A.C. mechanically operated fuel pump from 15 gallon tank. Solex down-draught carburettor. Combined air cleaner and silencer. Suction controlled automatic ignition advance. **Transmission:** Borg and Beck 9" diameter dry plate clutch. **Gearbox:** Three forward ratios and reverse. Gear change lever on steering column points toward centre of car in both left and right hand drive models. Silent helical gears with positive synchromesh on all forward gears. **Suspension:** Coil springs for independent suspension at front, long semi-elliptic rear springs. Controlled by hydraulic dampers. Anti-sway bar at rear. **Brakes:** Lockheed hydraulic. **Frame:** Exceptionally rigid, formed by opposed channel steel pressings braced by a cruciform member. Completely rust-proofed. **Steering:** Available right or left hand. Cam and roller type. **Electrical Equipment:** 12 volt, 51 amp./hr. battery under bonnet. Head lamps, parking lamps, tail lamps, and stop light. Concealed wind-tone horns.