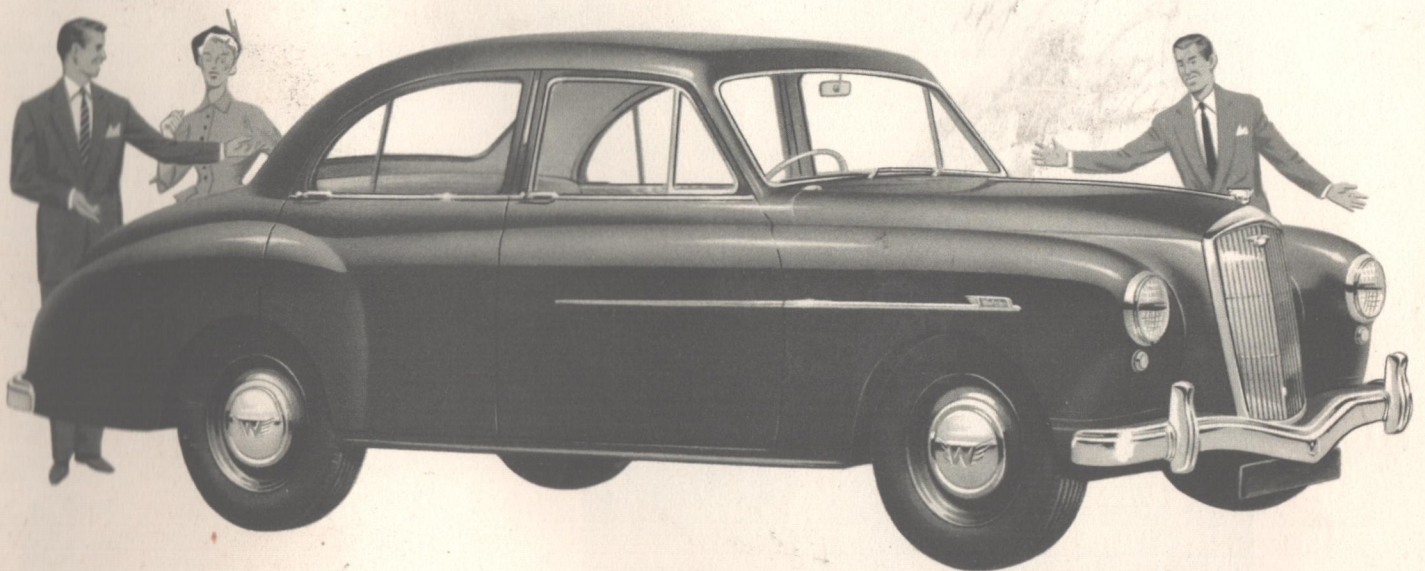
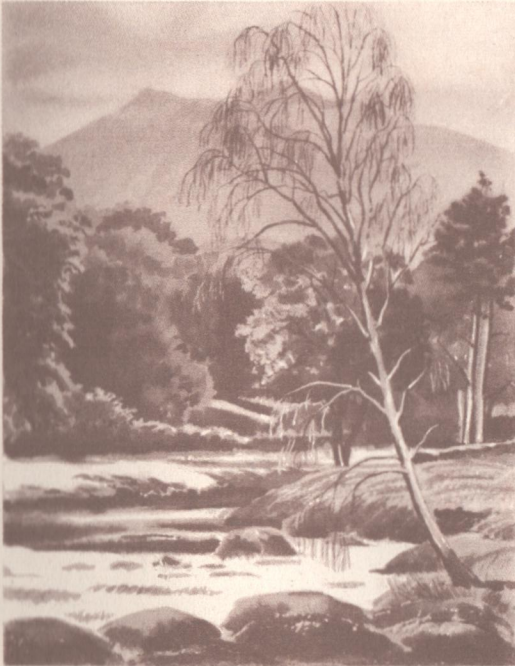


the new

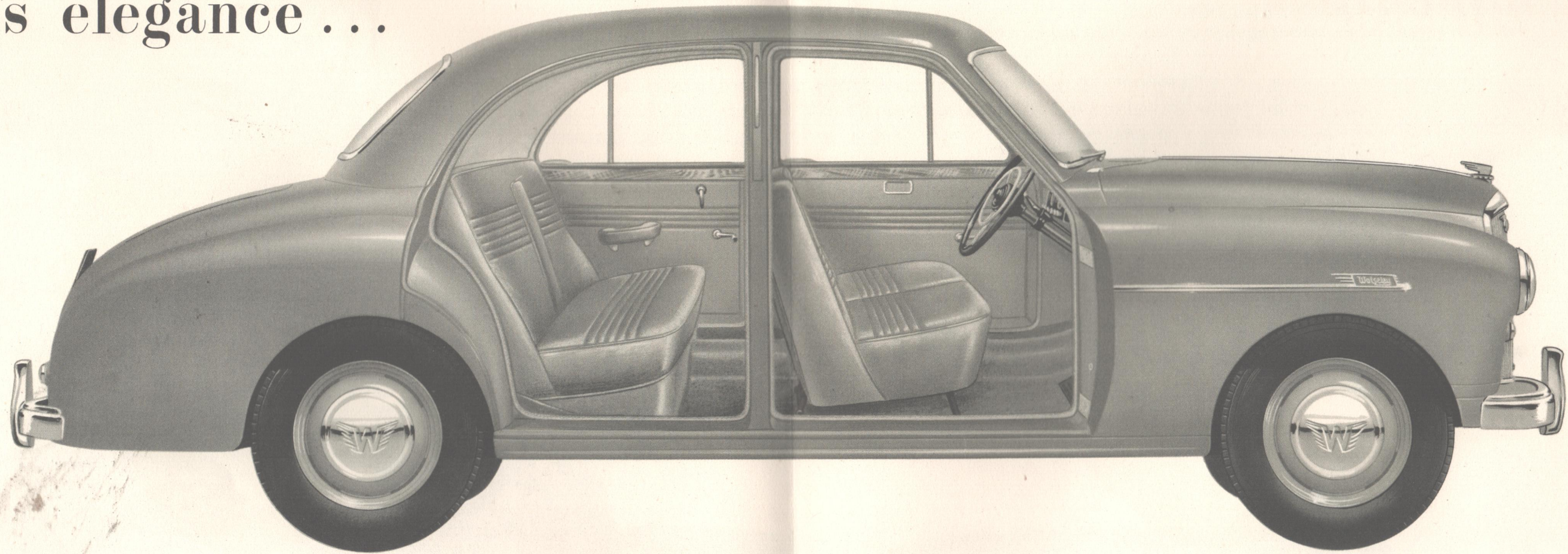
WOLSELEY

Four - Fortyfour

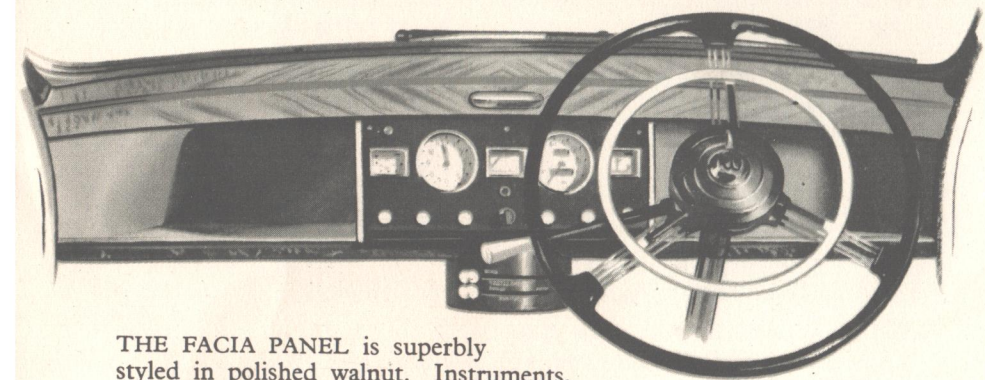


Gracefully styled for your motoring pleasure

Here's elegance . . .

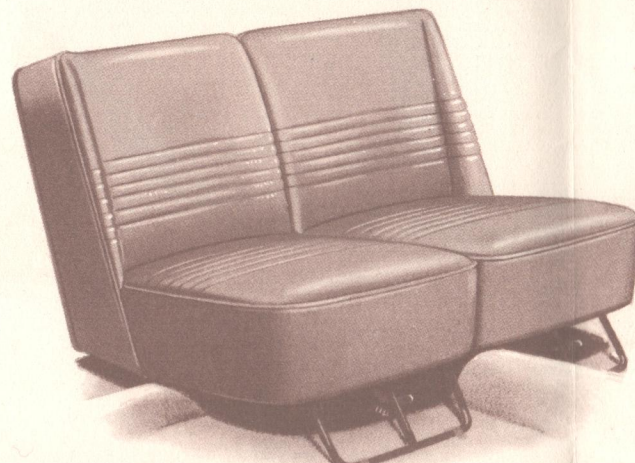


. . . here's luxury . . . that is distinctly Wolseley

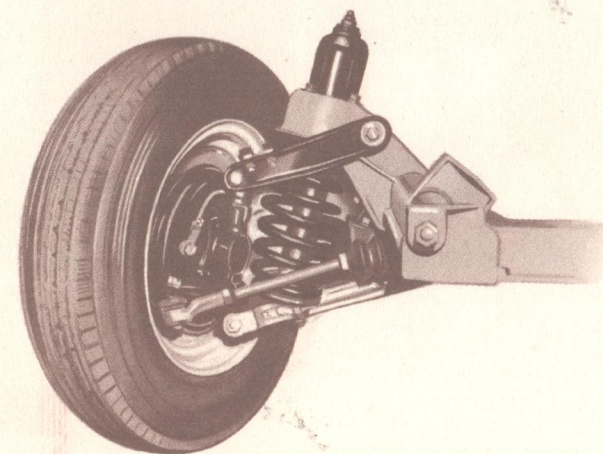


THE FACIA PANEL is superbly styled in polished walnut. Instruments, which include a thermometer, are clear and easy to read, with graduated panel lighting for night driving. Spring steering wheel, with badge in centre, harmonises with the interior. Top of the panel is unpolished, to prevent glare.

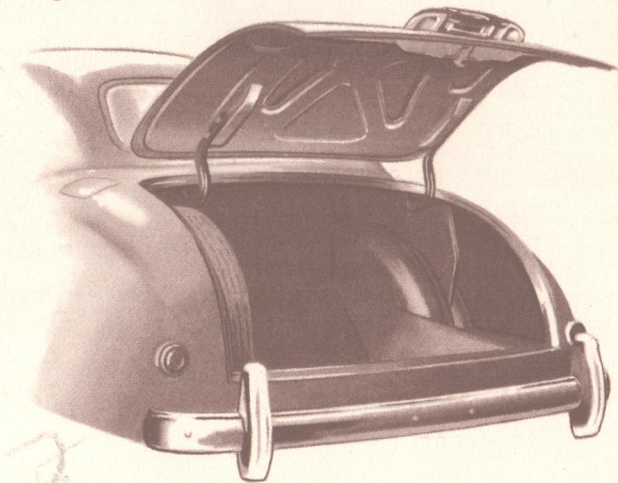
DIVIDED FRONT SEAT is deep, wide and comfortable. Trim is in first-quality English leather with foam rubber overlays on spring cases. Each half has an individual adjustment.



INDEPENDENT FRONT-WHEEL COIL SPRINGING gives flexibility and stability in action and allows a softer, easier ride on all kinds of roads. Long leaf-type rear springs are rubber-mounted.



THE LARGE, DEEP LUGGAGE TRUNK has an easily operated counterbalanced lid. Spare wheel fixed in upright position is quickly handled when required.



0035

Specification

WOLSELEY *Four-Fortyfour*

ENGINE: Four cylinders; bore 66.5 mm. (2.62 in.); stroke 90 mm. (3.54 in.); cubic capacity 1250 c.c. (76.28 cu. in.); overhead valves operated by push-rods and tappets from three-bearing camshaft driven from crankshaft by duplex roller chain; three-bearing counterbalanced crankshaft; renewable steel-backed white-metal bearing liners; full-flow renewable element external filter; lubrication by gear-type pump driven by helical gears from camshaft; aluminium alloy pistons; valve clearance adjustment by adjustable rocker screws.

COOLING: By pressurised system assisted by impeller pump and fan; circulation thermostatically controlled.

IGNITION: 12-volt battery and coil; distributor accessibly mounted on side of cylinder block and driven from camshaft by inclined shaft and helical gears; automatic advance and retard with vacuum control.

CARBURATION: S.U. automatic carburettor fed from 9½-gallon (43-litre) rear tank by S.U. electric fuel pump; mixture control and throttle interlinked for easy starting from cold; air intake cleaner.

TRANSMISSION: Borg and Beck single-plate dry clutch with light action to four-speed gearbox with synchromesh engagement for second, third and top gears, giving overall ratios of: first—19.511, second—11.547, third—7.718, top—5.125, reverse—19.511. Steering column gear change; final drive by Hardy Spicer propeller shaft with needle-bearing universal joints and semi-floating back axle with hypoid final reduction gears giving long life and silent operation.

BRAKES: Lockheed hydraulic fully compensated brakes operated on all wheels by foot pedal; simple shoe adjustment which simultaneously adjusts hand brake; hand brake operates on rear shoes through pistol-grip pull handle and cable mechanism with relay lever.

BODY AND CHASSIS UNIT: The mono-construction four-door saloon body incorporates the body shell, floor, bulkhead, and frame members. The body has a turret-type top of immense strength; bodies are completely treated for rust prevention in the world's most up-to-date plant. Full-width one-piece bumpers front and rear. Deep well-sprung leather upholstery with Dunlopillo overlays on spring cases. Wide one-piece curved windscreen and large curved rear light. Large trunk of exceptional depth with easy-operating counterbalanced lid. Petrol tank filler concealed by flush-fitting panel with anti-thief device. Hinged ventilating panels on front doors. Large parcel shelf behind rear squab. Polished wood garnish rails and finishers.

SUSPENSION: Independent front suspension by sturdy wishbone linkage with coil springs; long swivel pins; flexing rubber bearings for wishbones; rubber-mounted semi-elliptic rear springs; telescopic hydraulic rear shock absorbers with anti-sway mounting.

WHEELS AND TYRES: Disc-type wheels with five-stud fixing, equipped with Dunlop 5.50—15 tyres. Spare wheel carried in upright position in side of trunk and easily handled in emergency.

STEERING: Rack and pinion steering gearbox with direct linkage to steering arms on swivel pins, providing extremely light and accurate steering. Spring steering wheel with central horn switch and self-cancelling Trafficator control.

ELECTRICAL EQUIPMENT: High-output dynamo with compensated voltage control; 12-volt battery; dipping headlamps with prefocused bulbs; main beam indicator light on fascia panel; foot dipping switch; separate sidelights; ignition warning light; ventilator motor switch; stop- and tail-lamps; number-plate lamp; reverse lamp; dual arm windscreen wiper; twin windtone electric horns; Trafficators with automatic cancelling switch; two roof lamps and switch; radiator badge light.

INSTRUMENTS: Speedometer with trip recorder; fuel gauge; oil gauge; thermometer; electric clock.

CONTROL PANEL: Ignition switch; mixture control; starter switch; two-position lamp switch; windscreen wiper switch; lighting switch for instruments.

GENERAL EQUIPMENT: Triplex toughened safety glass all round; leather upholstery; pile carpets; three ashtrays; anti-glare driving mirror; push-button door lock release with fixed door handles; divided bench-type front seat with individual adjustment for each half; two large glove trays, one each side of instrument panel; inbuilt forced ventilation system with controllable fresh-air intake and inbuilt demisting ducts; two sun visors; arm-rests on rear doors; special jack and jacking points. Provision for wireless. Provision for windscreen washer. (Heater will be supplied as a standard fitment in certain territories. It will **not** be available as an optional fitment in territories where it is not supplied as standard equipment.)

COLOURS: Grey (metallised) with Grey upholstery. Green (metallised) with Green upholstery. Black with Brown upholstery. Black with Maroon upholstery.

PRINCIPAL DIMENSIONS

Wheelbase	8 ft. 6 in. (259 cm.)	Rear seat cushion to roof	36 in. (91 cm.)
Track (front)	50 1/8 in. (128.7 cm.)	Width over front seats at elbow	48 in. (122 cm.)
Track (rear)	51 in. (129.5 cm.)	Width over rear seats at elbow	48 in. (122 cm.)
Overall length	173 in. (439.4 cm.)	Depth of front cushion	18 in. (46 cm.)
Overall width	61 in. (155 cm.)	Depth of rear cushion	18 in. (46 cm.)
Overall height	60 in. (152 cm.)	Luggage container width	28 in. (min.) (71 cm.)
Width of front doors	32 in. (81 cm.)	Luggage container depth	26 in. (floor) (66 cm.)
Width of rear doors	30 in. (76 cm.)	Luggage container height	25 in. (max.) (63.5 cm.)
Height of door lights	13 in. (33 cm.)	Turning circle (R/H)	36 ft. 6 in. (11.1 m.)
Floor to roof	48 in. (122 cm.)	Turning circle (L/H)	38 ft. 1 in. (11.9 m.)
Front seat cushion to roof	38 in. (96 cm.)		

The issue of this folder does not constitute an offer, and the right is reserved to alter prices and/or specifications at any time without notice. Sales are conditional upon Terms of Business, Guarantees and Service arrangements issued by Nuffield Exports Limited.



Sole World Exporters

NUFFIELD EXPORTS LIMITED

Proprietors MORRIS MOTORS LIMITED

COWLEY · OXFORD · ENGLAND

Telephone Oxford, England 77733

Telegrams and Cables Morex, Oxford, England

Telex Oxford Telex 77168