

# Sunbeam

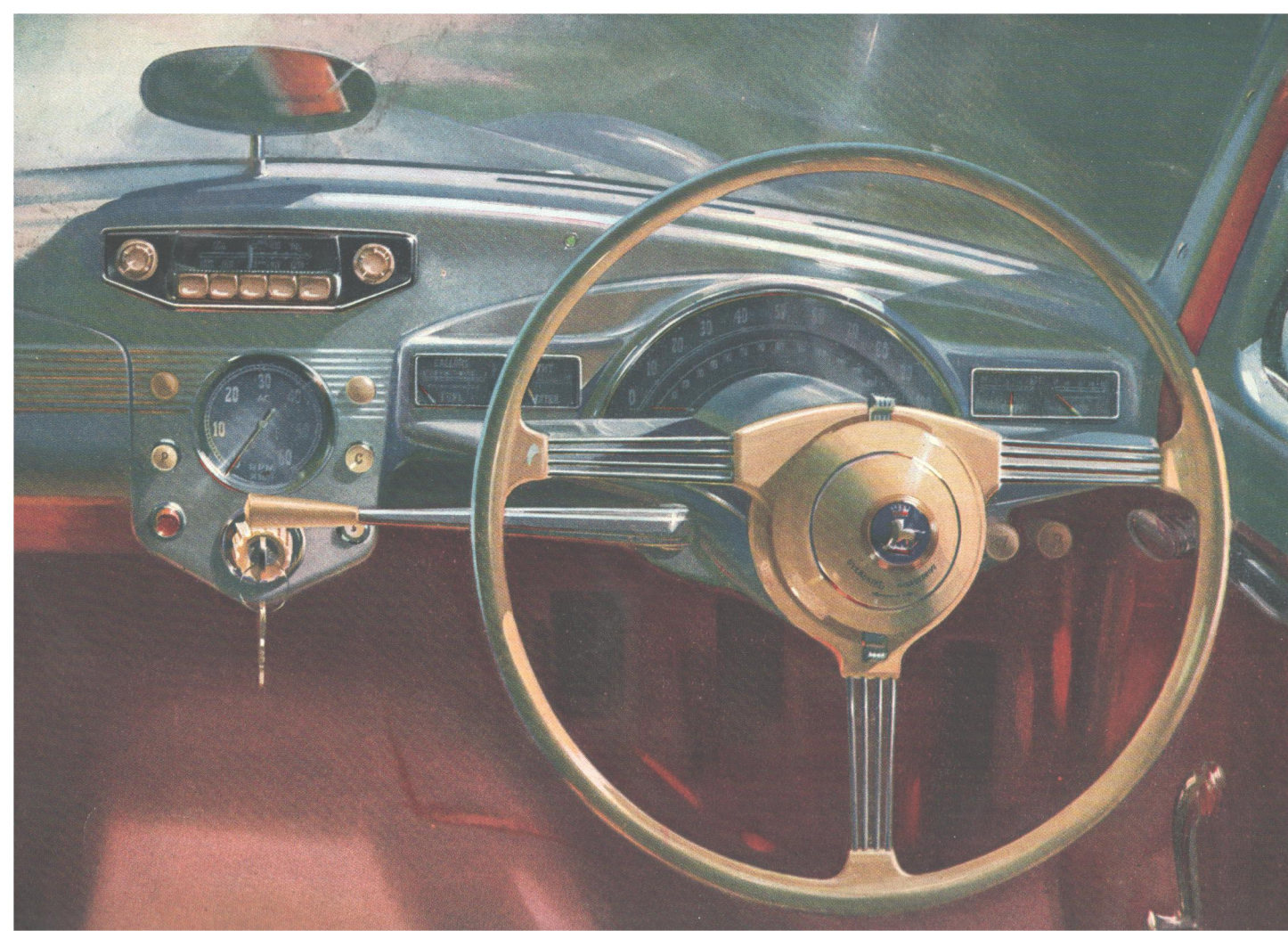
Mk. 111 Sports Saloon



Speed...  
endurance...  
elegance...

Outright winner of the 1955 Monte Carlo Rally

A P R O D U C T O F T H E R O O T E S G R O U P



*The car that comes first . . .* **SUNBEAM MARK III**  
*. . . outright winner of the 1955 MONTE CARLO RALLY*

**T**HIS EXCITING rally-bred car continues a brilliant career. Champion of international rallies, star of famous *concours d'élégance*, the Sunbeam Mark III gives a performance that wins world awards. Sunbeam Sports Saloons registered a series of exceptional successes in the 1955 Monte Carlo Rally, most gruelling of international motoring trials. Sunbeam won the Rally outright – also the *Coupe des Dames* – and won the award for the best three cars of the same make. No other manufacturer had ever achieved this triple distinction.

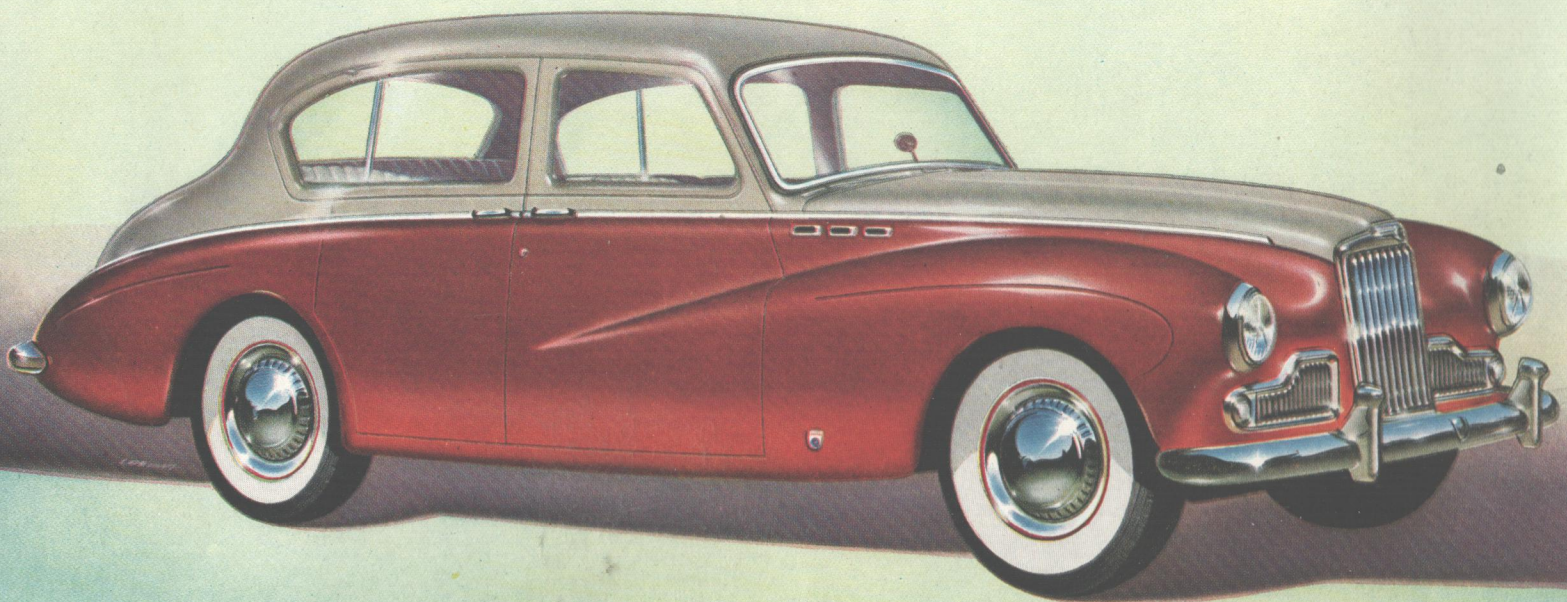
The knowledge gained in competition events has evolved still finer engineering excellence. The lusty 2¼-litre engine develops 85 b.h.p., gives lively acceleration, and a top speed of 95 m.p.h. – with proved fuel economy. An optional Overdrive further extends the flexibility of the top-gear range.

The exterior finish of the car, perfect in the tradition of the luxury Sunbeam, is now also available in tasteful two-tone colour schemes giving beautiful colour harmony.

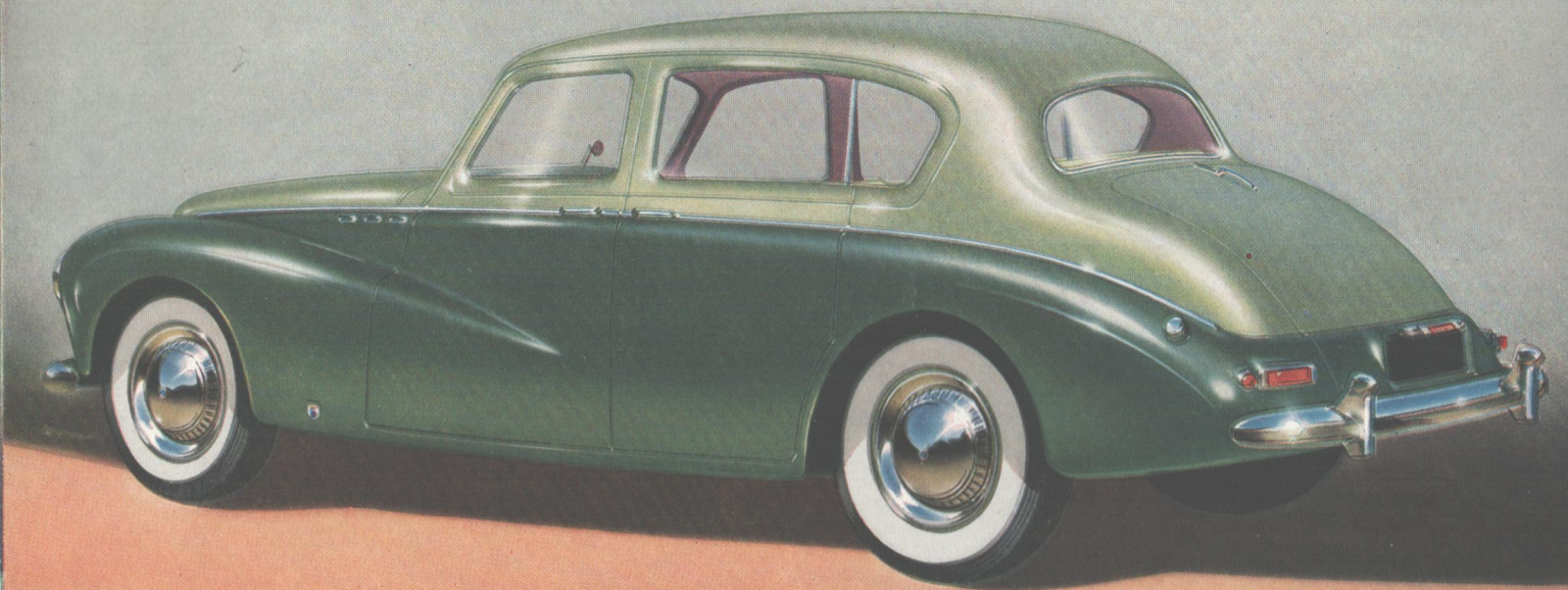
In the interior you have immense comfort and luxury, with armchair driving ease. The adjustable driving seat with padded armrests is a logical part of an ideal driving position, designed for effortless long-distance and high-performance travel.

The proud Sunbeam Mark III is the car to satisfy the most ambitious motorist – every day, on business or pleasure, you can enjoy its *rally* performance. You will admire the ease of handling such high performance with sure, deft controls and the security of powerful brakes. You will enjoy the quiet comfort of its smooth, luxury travel.

*The car you judge behind the wheel*



White-wall tyres and overriders are available as extras.

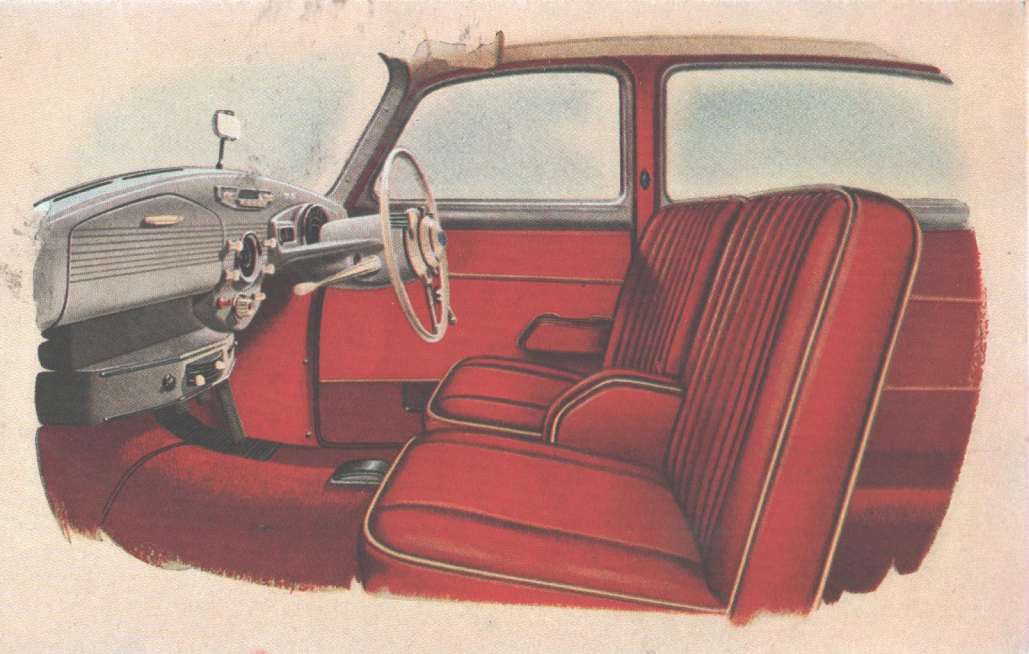


**Distinguished in appearance and performance**

*This is a Sports Saloon of superb elegance, with a remarkable sports performance. Its superlative road-holding qualities, precise steering and excellent braking power give you complete command of any situation – whatever the speed, the difficulties of traffic or terrain. Styling features include a boldly-designed chromed air intake grille embracing the side lamps. Three distinctive chrome air vents are mounted each side of the bonnet to aid engine cooling at high speeds.*

**TWO-TONE COLOURS in perfect harmony**

*A choice of two-tone colour schemes is now available in addition to the range of smart single-tone exterior finishes. The two-tone schemes blend harmoniously to give a beautiful appearance of grace and distinction. Inside the luxury Sunbeam are all the stylish amenities you would expect . . . thoughtfully-placed ashtrays, a cubby box for personal articles, recessed pockets in each front door . . . every planned consideration for your travel comfort.*



**Luxurious Interior.** *The front interior is compact yet roomy, and the twin seats – both adjustable for leg room – have padded armrests. In the driving position you have full control, relaxed in armchair comfort.*

*A wide Opticurve screen gives a clear driving view, and a rapid synchromatic gear change is at your finger tips. All other controls are quickly to hand.*

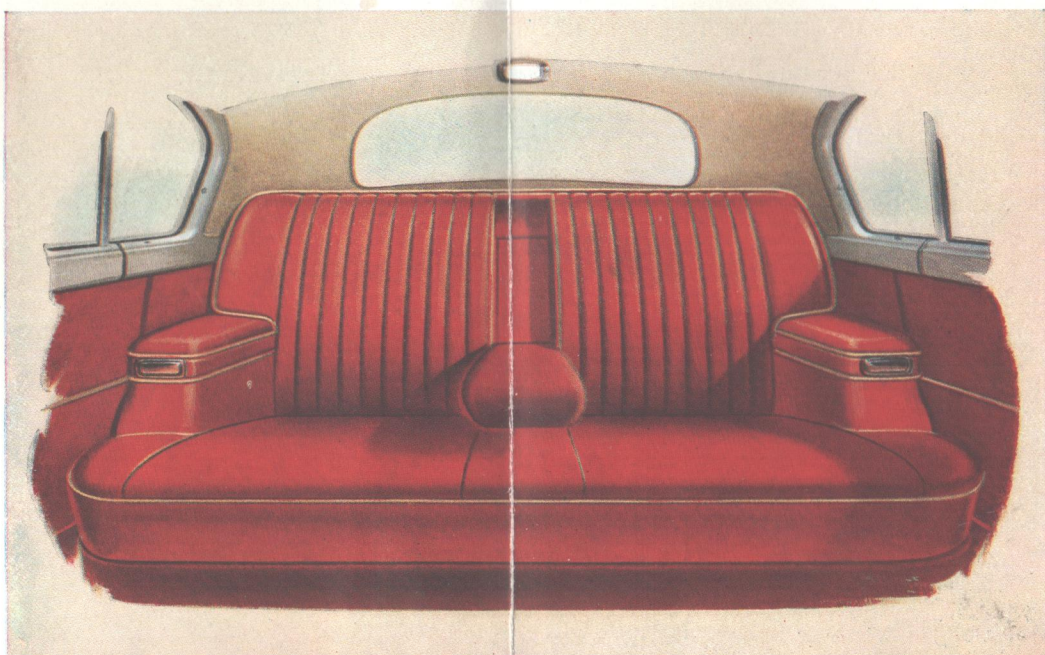
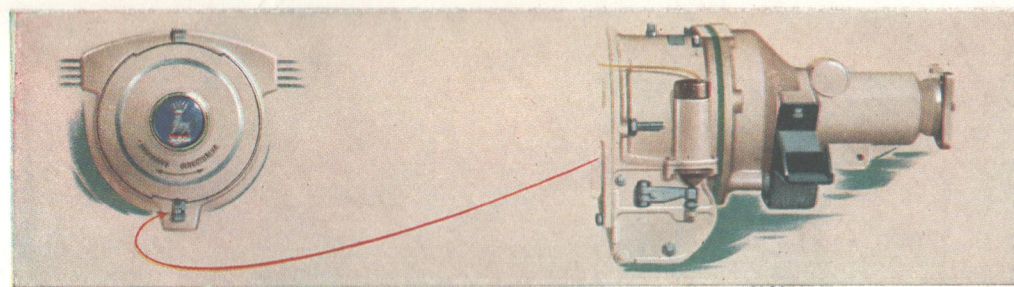
*The interior of the Sports Saloon is rich in luxurious comfort and fine appointments, all seats being overlaid with foam rubber. There are side armrests in the rear compartment, the central armrest folding back. Side windows admit full light and offer all-round vision to passengers. A large rear window facilitates reversing. A flush fitting sunshine roof, easily operated, is an added advantage for fine weather motoring.*

Right or Left-hand drive available according to market requirements

**THE LAYCOCK-DE NORMANVILLE OVERDRIVE**

*The Sunbeam Mark III has provision for the fitment of a Laycock-de Normanville overdrive, as an extra. This overdrive gives you the advantage of a fifth gear. When engaged, it enables you to use the engine's surplus energy in top gear to increase speed or to reduce fuel consumption. Engine wear is substantially reduced. Overdrive is operated by a switch on the steering wheel boss.*

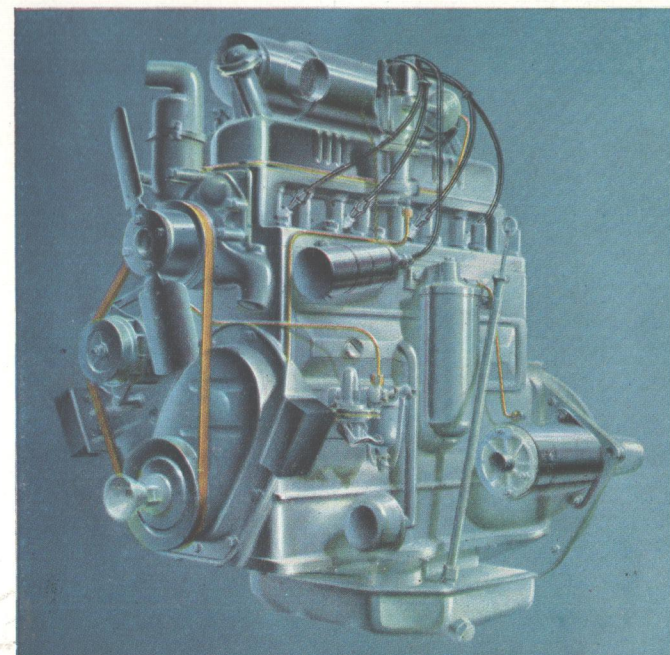
*As this unit is fitted during production it must be specified at the time of placing your order.*



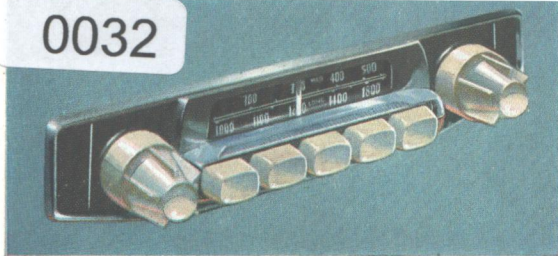
**SUNBEAM Engine**

*This is the Sunbeam power unit, the four-cylinder O.H.V. engine tested and proved in the most arduous international rallies.*

*The highly efficient cylinder head has been designed to give power output with smooth engine operation. The many refinements in engine design combine to use high octane fuels most advantageously, ensuring top operational efficiency, maximum power and low fuel consumption.*



0032



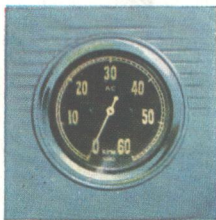
**Radio.** A press-button 'His Master's Voice' Car Radio of the latest type fits neatly in central recess of fascia, and must be specified when placing order for car.



**Heater.** This attractively designed unit controls air distribution throughout the car, and the temperature of the air circulated. In addition the air can be distributed to the windscreen for demisting and defrosting.

**Revolution Counter.** A Revolution Counter is also offered and replaces the styled motif in centre of fascia panel.

The Radio, Heater and Revolution Counter illustrated are items from the range of Rootes Group Special Accessories and are available as extras.



## SPECIFICATION OF THE SUNBEAM MARK III

**Engine.** Four-cylinder monobloc, o.h.v.; bore 81 mm.; stroke 110 mm.; (3-1875 x 4-33 in.); 2267 c.c. (138.2 cu. in.); maximum b.h.p. 85.5 at 4400 r.p.m. with 7.50:1 compression head. Light alloy connecting rods; three-bearing crankshaft; down-draught carburettor with manual choke control; full pressure lubrication; mechanical petrol pump; coil and distributor ignition; pressure cooling system. **Gearbox.** Four-speed, with synchromesh on top, third and second gears. Overall ratios: 3.90, 5.811, 9.633, 12.43 forward and 15.74 reverse. **Rear Axle.** Semi-floating, with hypoid gear final drive. Ratio 3.90:1. **Brakes.** Lockheed two-leading-shoe system with hydraulic operation. **Suspension.** Front: independent, with coil springs. Rear: semi-elliptic springs. Armstrong shock absorbers all round. Torsion bar fitted to front, transverse stabiliser at rear. **Frame.** Box-section side members and cross member, 'I' section cruciform. **Steering.** Three spoke wheel controlling Burman variable-ratio steering. Right or Left-hand steering is available according to market requirements. **Wheels.** Five wheels fitted with styled nave plates, 'slotted' wheel discs and Rootes Group 'Rimfinishers'. **Tyres.** Dunlop tubeless extra low pressure 5.50 x 16 in. **Accessories (available at extra cost).** Radio, Heater and ventilating equipment, white-wall tyres, bumper overrides, revolution counter and manually operated override for automatic ignition. For details of the full range of Rootes Group Special Accessories apply to your Dealer. **Overdrive Unit (available at extra cost).** Laycock-de Normanville overdrive unit, for use in top gear and operated with a final drive ratio of 4.22:1 giving an overall ratio of 3.28:1; as this unit is fitted during production it must be specified at the time of placing your order. **Chassis Dimensions.** Overall length: 168 in. (4267 mm.). Width: 62½ in. (1587 mm.). Height 60½ in. (1543 mm.). **Unladen Weight.** 3024 lb. (1373 kg.). **Colour Schemes.** Where two-tone colour schemes are quoted the first colour is the upper body colour and the second the lower body colour. **Two-tone colours.** Cactus Green/Pine green with Light Green upholstery. Dawn Mist/Corinth Blue with Blue Grey upholstery. Dove Grey/Claret with Ascot Grey upholstery. **Single-tone colours.** Embassy Black with Bright Red or Light Fawn upholstery. Claret with Light Fawn or Ascot Grey upholstery. Thistle Grey with Bright Red or Blue Grey upholstery.

EXPORT **ROOTES** DIVISION  
DEVONSHIRE HOUSE, PICCADILLY, LONDON, W.1

*The Company reserves the right to alter any prices or specifications at any time without notice, and all goods are sold subject to prices and Conditions of Sale ruling at the time of delivery.*



Sales and Service  
in 142 Countries