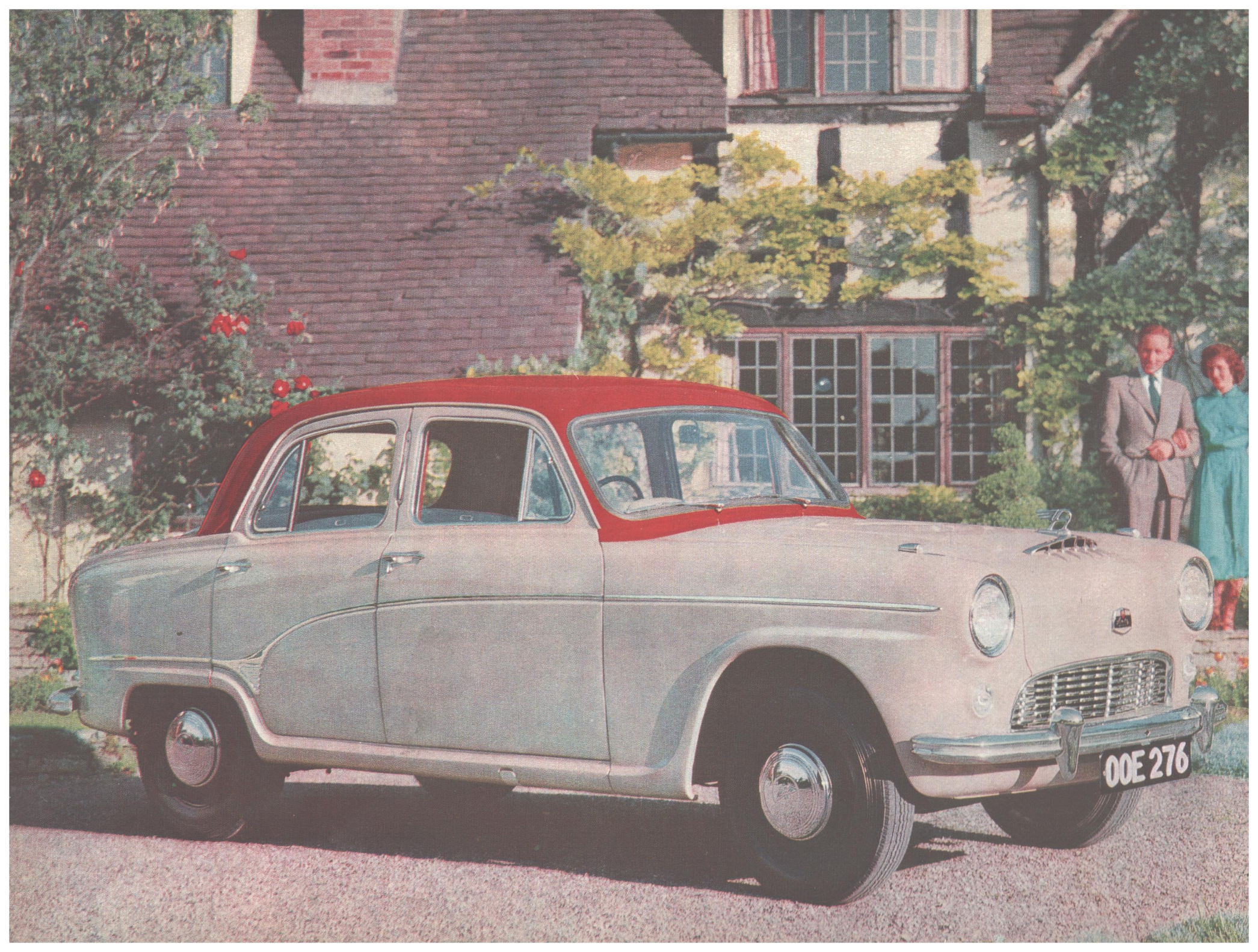




AUSTIN A90 'SIX' WESTMINSTER





AUSTIN

A90

'SIX'

WESTMINSTER



Never before has there been such a motoring opportunity for the family man or business executive as that offered by this impressive new Austin. The graceful lines of the coachwork, the stylish design of the interior and the scintillating power of the six-cylinder, overhead-valve engine which develops 85 horse-power, all combine to make the A90 'Six' Westminster a car of outstanding character.

Discerning motorists will appreciate the effortless control provided by the special high-efficiency steering, hydraulically operated clutch, hydraulic braking and the four-speed transmission with special easy-change mechanism. And there will be general approval for the tough all-steel unitary construction of the body which affords perfect safety through its great strength.

A five- or six-seater sedan with a fine choice of colors and equipment, the Austin A90 'Six' Westminster is unrivalled in the medium power range of cars—you can depend on it.

0043

S P E C I F I C A T I O N S

ENGINE: 2,639 c.c. (160.91 cu. in.); bore 3.125 in.; stroke 3.5 in.; horse-power 85 at 4,000 r.p.m.; maximum torque 130 lb. ft. at 2,000 r.p.m.; compression ratio 7.3 to 1.

Cylinders: Six cylinders cast integral with crankcase. Detachable cast-iron head carrying valve gear.

Crankshaft: Forged steel supported by four steel-backed white metal bearings.

Connecting Rods: Forged steel with steel-backed white metal bearings.

Pistons: Split-skirt, concave top pistons in aluminum alloy with alumilite finish. Three compression rings and one slotted scraper ring fitted.

Camshaft: Forged steel in four steel-backed white metal bearings. Cams of patented design to give efficient and quiet operation. The camshaft gear has special oil catchers and an automatic tensioner to maintain chain lubrication and tightness respectively.

Valves: Overhead, operated by push-rods and designed for silent operation. Valve oil seats are fitted.

Lubrication: Oil is forced under pressure to all main, connecting rod and camshaft bearings and to each tappet. It is also fed to the timing chain and overhead valve rocker gear. The connecting rods have jet holes to provide oil for cylinder walls when starting-up. Both main and connecting rod oil feeds are of patented design to ensure longer crankshaft life. A full-flow oil filter is fitted. It has a renewable element. Oil capacity approximately 14½ U.S. pints (12 Imp. pints).

Cooling: Circulation by centrifugal pump with thermostat control. Water is delivered to the cylinder block and thence to ample passages surrounding the valve pockets and spark plugs. A 4-bladed fan is fitted. Cooling system capacity approximately 30 U.S. pints (25 Imp. pints).

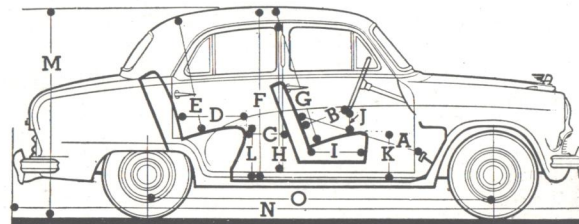
Ignition: Coil and 12-volt battery ignition with automatic advance and retard and in-built vacuum control.

Fuel System: Fuel from a rear tank is fed by mechanical pump to the Zenith carburetor fitted with air cleaner. An oil bath air cleaner is fitted to some export models. A stop-tap is provided on the fuel tank. Tank capacity 15 U.S. gallons (12½ Imp. gallons).

CLUTCH: Borg and Beck single dry plate. 9 in. diameter. The clutch is operated hydraulically by pendant pedal.

TRANSMISSION: 4-speed transmission, with synchromesh engagement for all gears except low and reverse. The gear shift is mounted on the steering column. Oil capacity approximately 4½ U.S. pints (4 Imp. pints).

REAR AXLE: Hypoid bevel drive in pressed steel "banjo" type casing. Ratio; 3.91 to 1. Oil capacity approximately 3½ U.S. pints (3 Imp. pints).



DIMENSIONS		Inches
Pedal to Seat Squab	... A	32½
Steering Wheel to Seat Squab	... B	36½
Distance between Seats	... C	12
Rear Seat Cushion Depth	... D	16
Height over Rear Seat	... E	8½
Maximum Interior Height	... F	12½
Height over Front Seat	... G	18
Minimum Height of Door Opening	... H	35
Front Seat Cushion Depth	... I	48½
Steering Wheel to Seat Cushion	... J	37
Front Seat Cushion above Floor	... K	39½
Rear Seat Cushion above Floor	... L	18
Overall Height (Unladen)	... M	7
Overall Length	... N	13
Wheelbase	... O	15
Overall Width	...	63½
Body Width between Center Pillars (at Waist)	...	170½
Front Seat Cushion Width (maximum)	...	103½
Rear Seat Cushion Width (maximum)	...	64
Maximum Width over Rear Seat	...	52½
Track, front at ground level	...	24
Track, rear	...	54½
Ground Clearance	...	54½
Turning Circle	...	51½
Luggage Compartment—Height of Opening	...	36 ft.
Luggage Compartment—Width of Opening	...	35
Luggage Compartment—Maximum Depth	...	49½
Luggage Compartment—Approximate Capacity	...	26½
Approximate Weight, less fuel	...	14 cu. ft.
	...	26 cwt. o lb.

STEERING: Special high efficiency cam type. Spring spoke 17 in. diameter steering wheel with central horn button.

SUSPENSION: Front: Independent coil springs controlled by double-acting hydraulic shock absorbers. **Rear:** Long semi-elliptic reverse camber springs, under-slung and mounted on rubber bushes. Control by double-acting hydraulic shock absorbers interconnected by anti-sway bar.

BRAKES: Girling hydraulic on all wheels, applied by pendant pedal. Front brakes are of two-leading-shoe design. A pistol-grip parking brake housed in the steering column cover operates mechanically on the rear wheels.

WHEELS AND TIRES: Pressed steel disc wheels with slots for ventilation and the fitting of non-skid chains. Large chromium plated discs. Dunlop 6.40—15 Cushion tires.

ELECTRICAL: 12-volt, 51 amp. hr. capacity battery; built-in headlights with block lenses, and dipping equipment to suit regulations of different countries; separate sidelights on top of fenders, visible to driver; twin, combined stop-tail lights with in-built reflectors; rear license plate light; interior roof light operated manually, and automatically by the opening and closing of the doors; flashing turn indicators operated by self-cancelling finger lever on steering column, with in-built warning light; dual windshield wipers; twin horns.

INSTRUMENTS: Trip and total mileage speedometer which also incorporates "no charge" warning light and headlight beam indicator light. A combined instrument embodies the fuel gauge, oil pressure gauge and water temperature indicator.

COACHWORK: Five-six seater, four-door, all-steel sedan of unitary construction with fully stressed skin and no soldered joints. Rear-opening doors with toughened glass windows and friction-controlled ventilating louvers. Rear doors have additional safety catch to prevent their inadvertent opening by children. Windshield of laminated curved glass. Individual close-mounted front seats, independently adjustable. Full-width rear seat, unobstructed by wheelarches. All seat cushions have latex foam moulded foundations. Large capacity luggage compartment with separate spare wheel carrier beneath; spare wheel lowered by means of starting handle. Attractive dash with glove-box on passenger side and full-width parcel shelf beneath. Hood lock controlled from inside car. Air conditioning provided for interior.

Standard Models: Seats trimmed in P.V.C.-coated fabric; floor covered with rubber mat at front, carpet at rear; sun visors.
Optional Extras: Heater, radio.

De Luxe Models: Heater; seat contact surfaces of hide; remainder of trim in P.V.C.-coated fabric; carpets front and rear; arm-rests; sun visors; locking glove box lid; chromium mouldings; bumper guards; electric clock.
Optional Extra: Radio.

The goods manufactured by the Austin Motor Company Limited are supplied with an express Warranty which excludes all warranties, conditions and liabilities whatsoever implied by Common Law, Statute or otherwise. PRICES.—The Company reserves the right to vary the list prices at any time. SPECIFICATION.—The Company reserves the right on the sale of any vehicle to make before delivery, without notice, any alteration to or departure from the specification, design or equipment detailed in this publication. Under present supply difficulties such alterations are likely to occur at any time.

THE AUSTIN MOTOR COMPANY LTD. (ENGLAND)
27-29 WEST 57th STREET, NEW YORK 19, N.Y.



THE AUSTIN MOTOR COMPANY (CANADA) LTD.
737 CHURCH STREET, TORONTO, ONTARIO