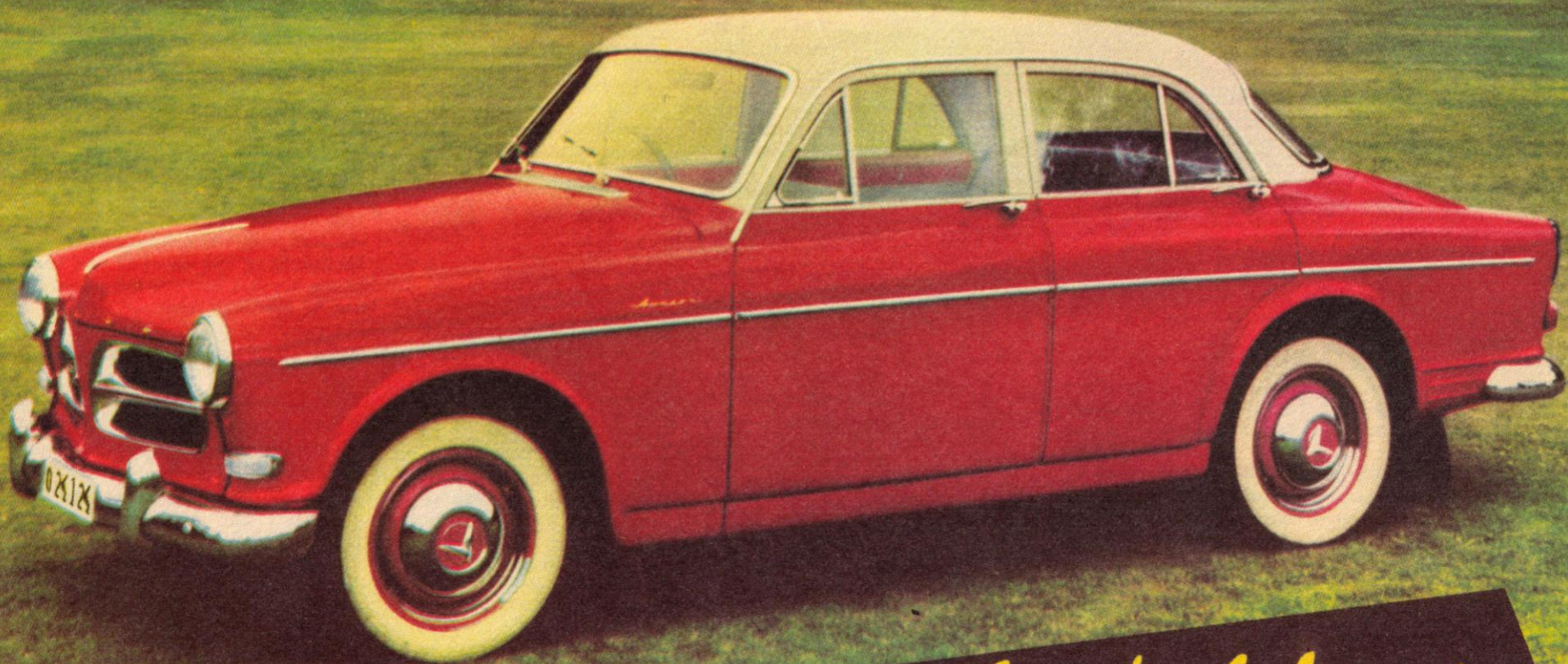


**VOLVO**

*Amazon*



*a Swedish beauty*

The

**VOLVO** *Amazon*

*for speed*

*... safety*

*... comfort*

#### **60 B.H.P. OVERHEAD-VALVE ENGINE**

Superb acceleration with a maximum speed of 90 m. p. h. Low fuel consumption, 35 miles per gallon at cruising speed.

#### **HIGHLY EFFECTIVE RUST-PROOFING**

The all-welded, integral-construction steel body has been rust-proofed by ultra-modern methods to stand up to open-air parking all the year round — in all weather conditions. Top quality chromium-plating.

#### **FRONT SEAT SAFETY**

The padded facia and the specially constructed steering wheel mean increased front seat safety. Powerful brakes with a total lining area of 142 sq. in. Safety glass in windscreen. Tubeless tyres. All wheels balanced.

#### **EASY TO DRIVE — EASY TO SERVICE**

Exceptional road-holding thanks to the new suspension. All instruments in their right position — directly in front of the driver. Small turning radius — only 16 ft. 2 in. Easy servicing through a minimum of lubricating points — only five on the front section — which are greased every 3000 miles.

#### **HEATER AND AIR CONDITIONING**

A new type of heater ensures summer warmth all the year round. Highly efficient defroster. The air intake is placed so high that the exhaust fumes of the cars in front do not come in.

#### **ATTRACTIVE COLOURS — ELEGANT UPHOLSTERY**

The Amazon is available with single or dual colour finishes with a choice of several attractive colours. Elegant upholstery of hard-wearing textile and plastic harmonizing perfectly with the finish of the car.

**AB VOLVO**

**EXPORT DEPARTMENT**

**GOTHENBURG — SWEDEN**

## **SPECIFICATIONS**

**Engine.** Four-cylinder, overhead-valve engine, type B16A. Bore 3.125" (79,37 mm), stroke 3.150" (80 mm); cubic capacity 1600 c. c.; compression ratio 7.5:1. Output 60 b.h.p. at 4500 r.p.m.; torque 81.8 lb.ft. (11.3 kgm) at 2500 r.p.m. Chromed compression rings. Full-flow oil filter included in standard equipment; oil capacity of engine, including oil filter, 6½ pints.

**Clutch.** Spring-loaded, single dry plate clutch. Friction facing area, 53 sq.in. Hydraulically operated with over-centre spring for light pedal pressure.

**Gearbox.** Cast-iron gearbox casing with aluminium top cover. Three forward speeds and one reverse. Synchromesh top and second gears, silent-running first gear. All gears are helically cut for quiet operation.

#### *Gearbox ratios*

First	3,23:1	Top	1:1
Second	1.62:1	Reverse	2.92:1

**Drive.** Divided, open propeller shaft for vibration-free transmission. The centre bearing is mounted in rubber blocks for insulation from sound and vibration. The centre bearing ball bearings require no maintenance.

**Rear axle.** Powerful, hypoid final drive. Axle shafts journalled in tapered roller bearings. Axle ratio 4.55:1. Oil capacity, 1½ pints.

**Steering.** Roller and worm gear type for easy steering. Steering gear ratio, 15.5:1.

**Suspension.** Front: independent front wheel suspension with coil springs and wishbones. Rear: Coil springs and rear axle in rubber-mounted support arms, two torque arms and a track rod. Double-action, hydraulic shock absorbers front and rear.

**Brakes.** Self-adjusting and self-centring hydraulic brakes. Total lining area 142 sq.in. Two-leading shoe system at front. The handbrake operates separately on the rear wheels.

**Wheels and tyres.** Pressed steel disc wheels with robust projections for hub disc attachment. All wheels are balanced. Tubeless low pressure tyres, 5.90—15". White-wall tyres optional extra.

**Body.** All-welded, integral construction steel body. The body and other sheet-metal units are rust-proofed by ultra-modern methods. The insides of the mudguards are coated with rubber asphalt.

**Upholstery.** Available with either plastic or cloth upholstery.

**Fuel tank.** 10 gallons capacity: at rear.

**Electrical equipment.** The ignition switch and the ignition coil are connected by means of an armoured anti-theft cable. The starter control is incorporated in the ignition switch and there is a third position for the switch by means of which all accessories can be used when the engine is not running. Fan-cooled, 50 amp. dynamo with automatic voltage control system. Powerful headlights with excellent light distribution; foot-operated dipper switch. Automatic headlight signal control button on direction indicator switch for overtaking at night. Automatic internal lighting switch on both front doors. Flashing direction indicators front and rear with acoustic and flashing warning devices. Headlight main beam warning light. 6 volt, 85 amp. hr. battery.

**Instruments and operating controls.** Combined instrument in front of the driver containing speedometer with mileometer and trip gauge, temperature gauge and fuel gauge. Rheostat-controlled instrument lighting. Plastic-rimmed steering wheel with horn ring. Self-cancelling direction indicator switch under steering wheel. Central floor gear lever.

**Other standard accessories.** Double electric windscreen wipers with two speeds and automatic parking. Clock on facia. Double sun visors. Ashtrays in facia and in rear doors. Complete tool kit and jack. Spare wheel stowed upright in luggage compartment.

**Dimensions and weights.** Wheelbase 8 ft. 6 in. Overall length 14 ft. 5 in. Track, front and rear, 4 ft. 3½ in. Overall width 5 ft. 3½ in. Kerb weight 2260 lb.

The Company reserves the right to alter the price and specifications at any time without notice.