

FOR VERY PARTICULAR PEOPLE

**WOLSELEY**

*Six-Ninety*

EDGAR KIRBY & SONS LTD.  
THE GREEN  
MARTHAM,  
GT. YARMOUTH





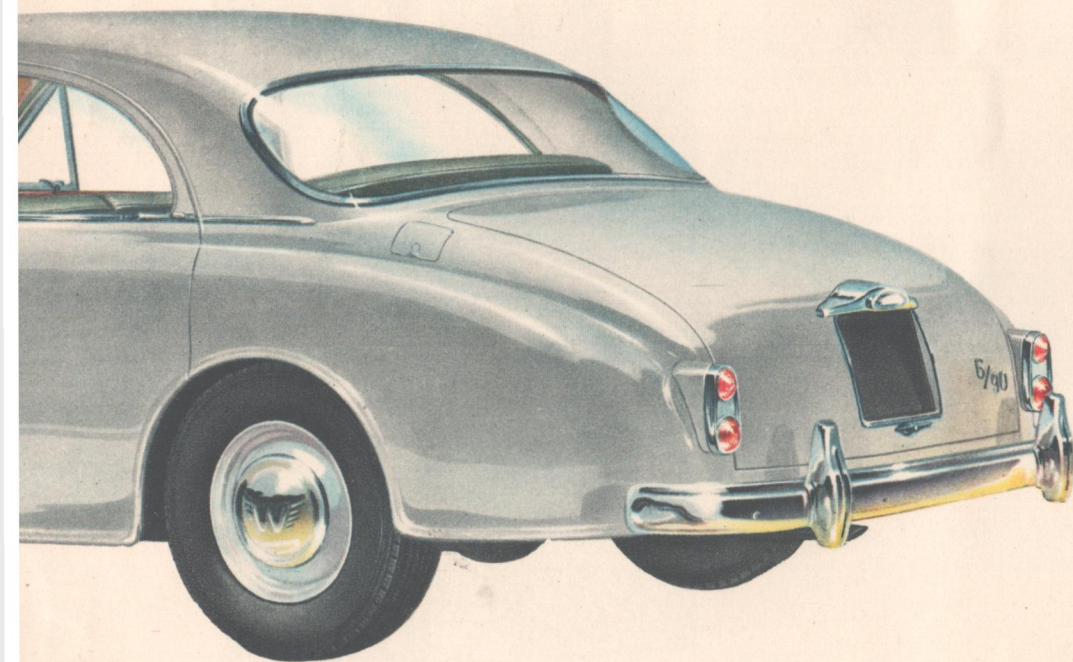
# CRAFTSMANSHIP WITH CHARACTER

COL  
A

**I**MPRESSIVE APPEARANCE is only half the story.

Impressive power is equally matched to this fine car, giving a refined but exhilarating performance on the open road. With the character of a

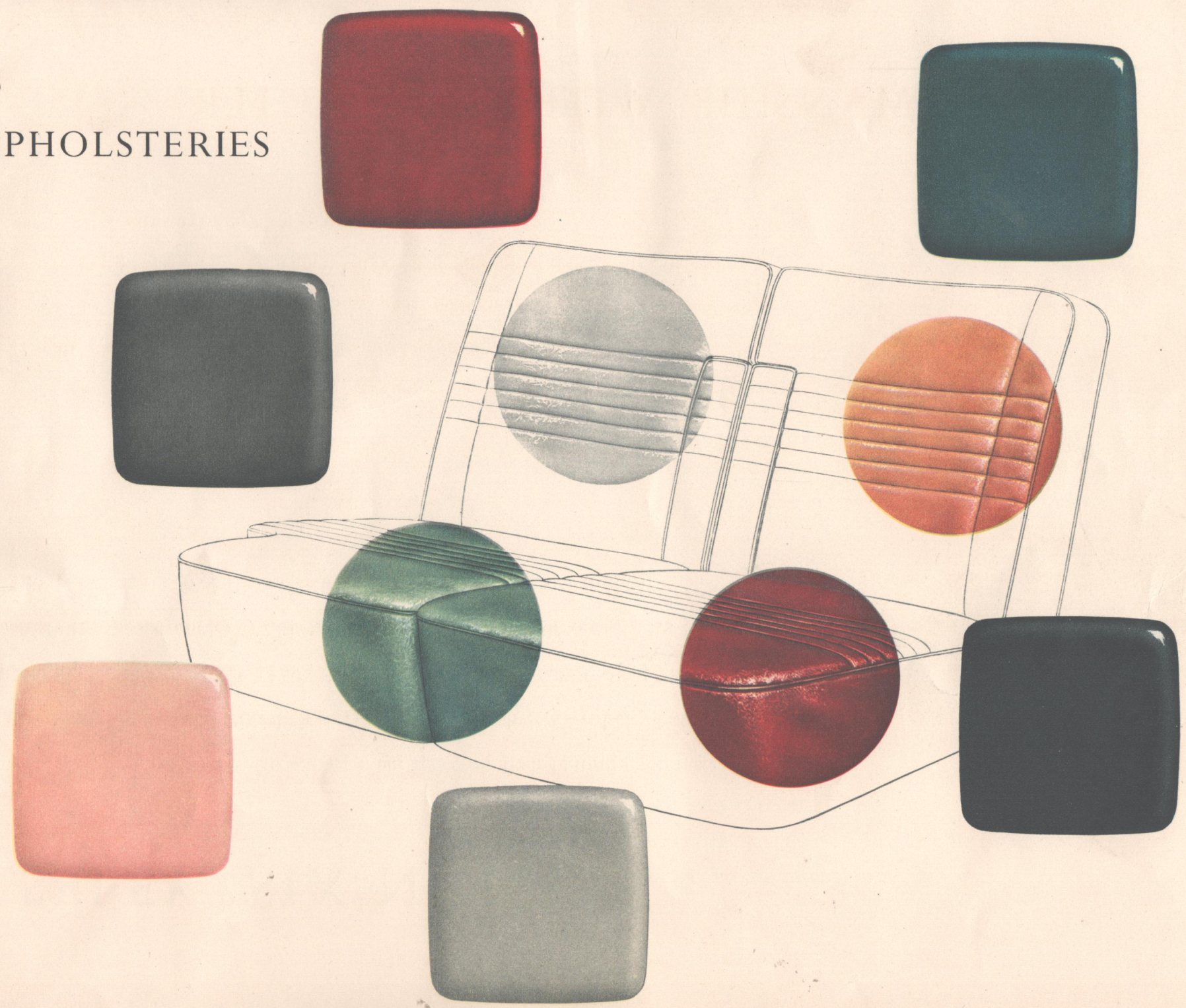
thoroughbred, the Six-Ninety has road-holding ability for sustained high cruising speeds and ample power reserves for vivid acceleration and hill climbing.



- **Black** with either maroon upholstery and maroon carpet, green upholstery and green carpet, or biscuit upholstery and brown carpet; Black wheels.
- **Maroon** with either maroon upholstery and maroon carpet or biscuit upholstery and maroon carpet; Maroon wheels.
- **Swiss Grey** with either maroon upholstery and maroon carpet, green upholstery and green carpet, or light grey upholstery and maroon carpet; Swiss Grey wheels.
- **Alhambra Green** with either biscuit upholstery and brown carpet or light grey upholstery and black carpet; Alhambra Green wheels.
- **Champagne** with maroon upholstery and maroon carpet; Champagne wheels.
- **Yukon Grey** with either maroon upholstery and maroon carpet, green upholstery and green carpet, or light grey upholstery and maroon carpet; Yukon Grey wheels.



URS  
D UPHOLSTERIES





# THE WOLSELEY SIX-NINETY

FOR THOSE who require a car reflecting their natural good taste, for those with a desire to travel more in concord with their discriminant way of living, Wolseley have created the fabulous Six-Ninety. Flowing lines and elegant furnishings please the most critical eye. Smooth, silent power and fine road holding satisfy the most technically discerning. Being both quietly impressive for formal occasions and luxuriously gay for leisurely hours, the Wolseley Six-Ninety is a very satisfying car to own.





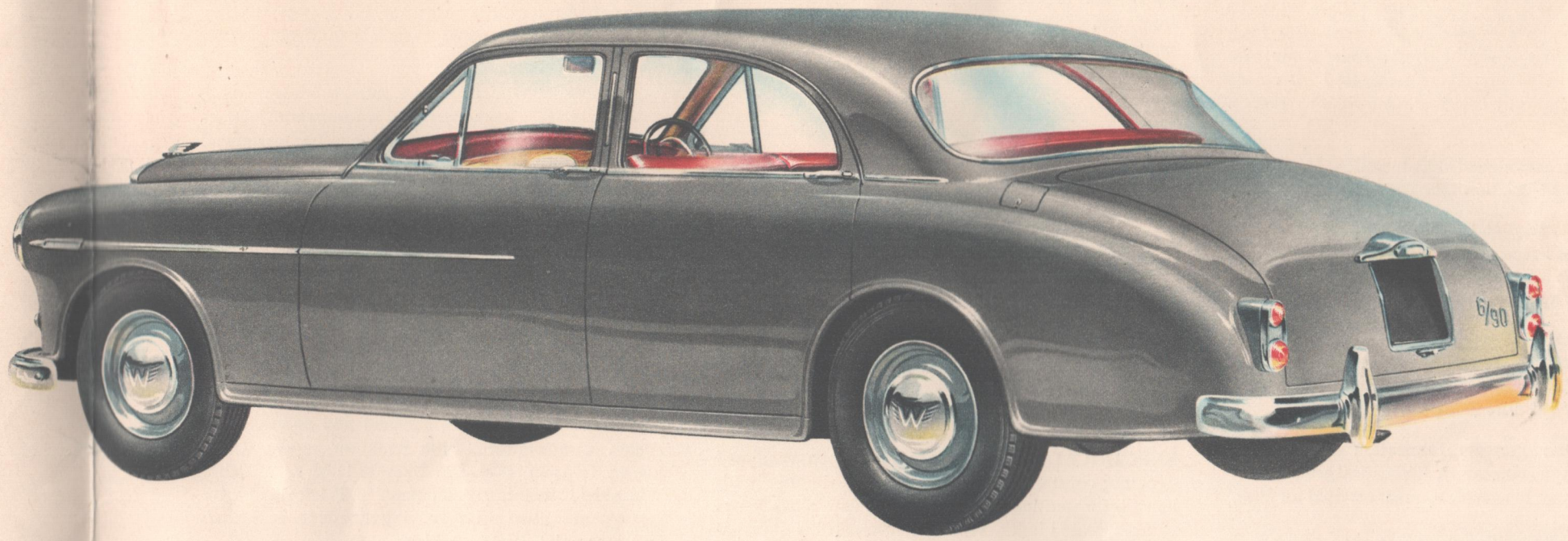
# FOR VERY PARTICULAR PEOPLE

THE GRACEFUL COACHWORK is not only beautifully finished to a high degree but is of immensely strong construction. Pressed-steel panels of heavy gauge are welded together throughout, thus creating a body shell of great lasting quality.

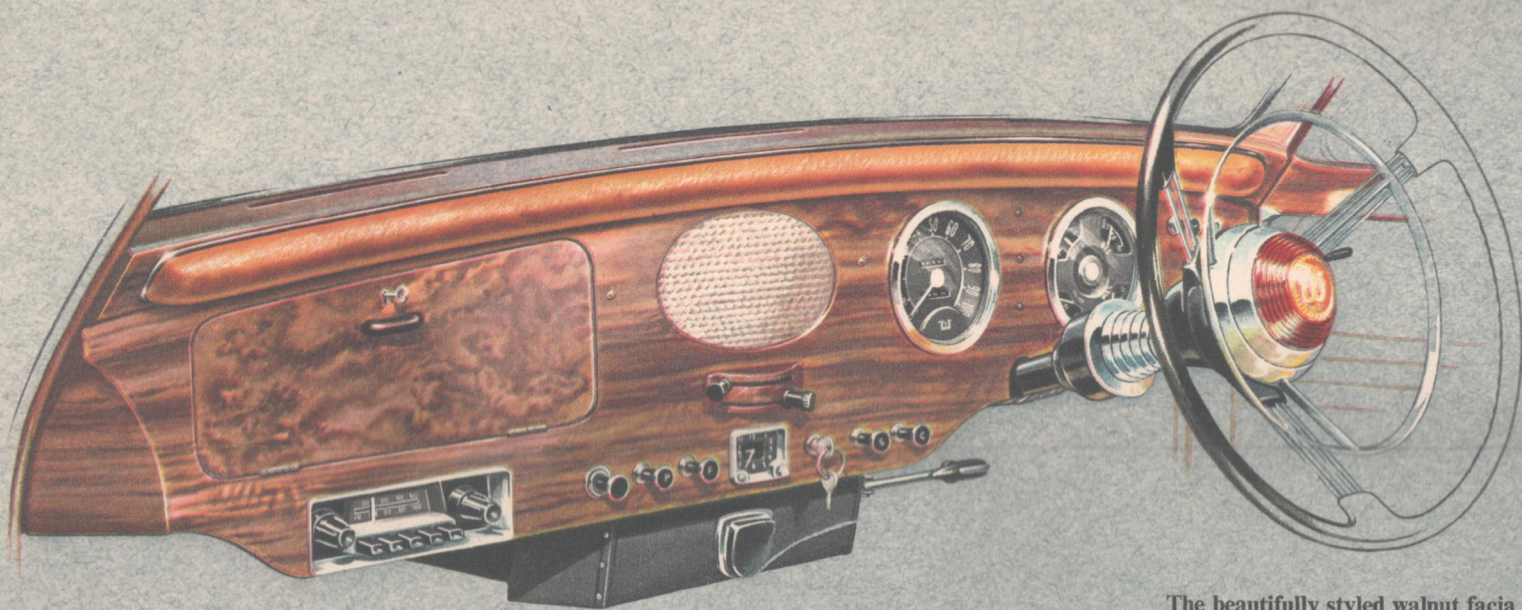
Safety glass is used all round. Within the car, too, furnishings are of the highest quality. However formal the occasion, the Six-Ninety is a most dignified companion.



BUY WISELY—BUY WOLSELEY

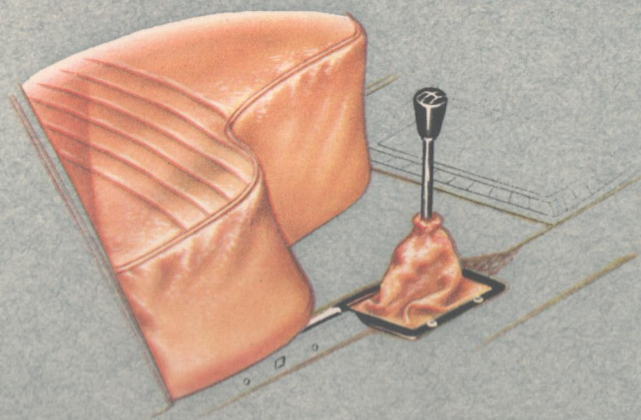




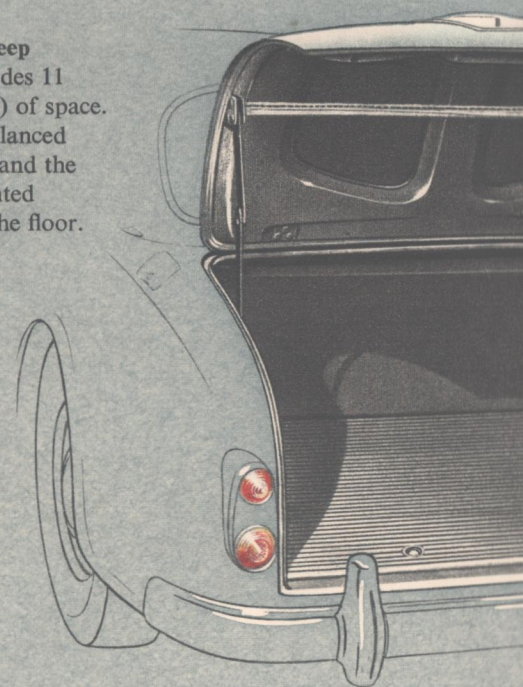
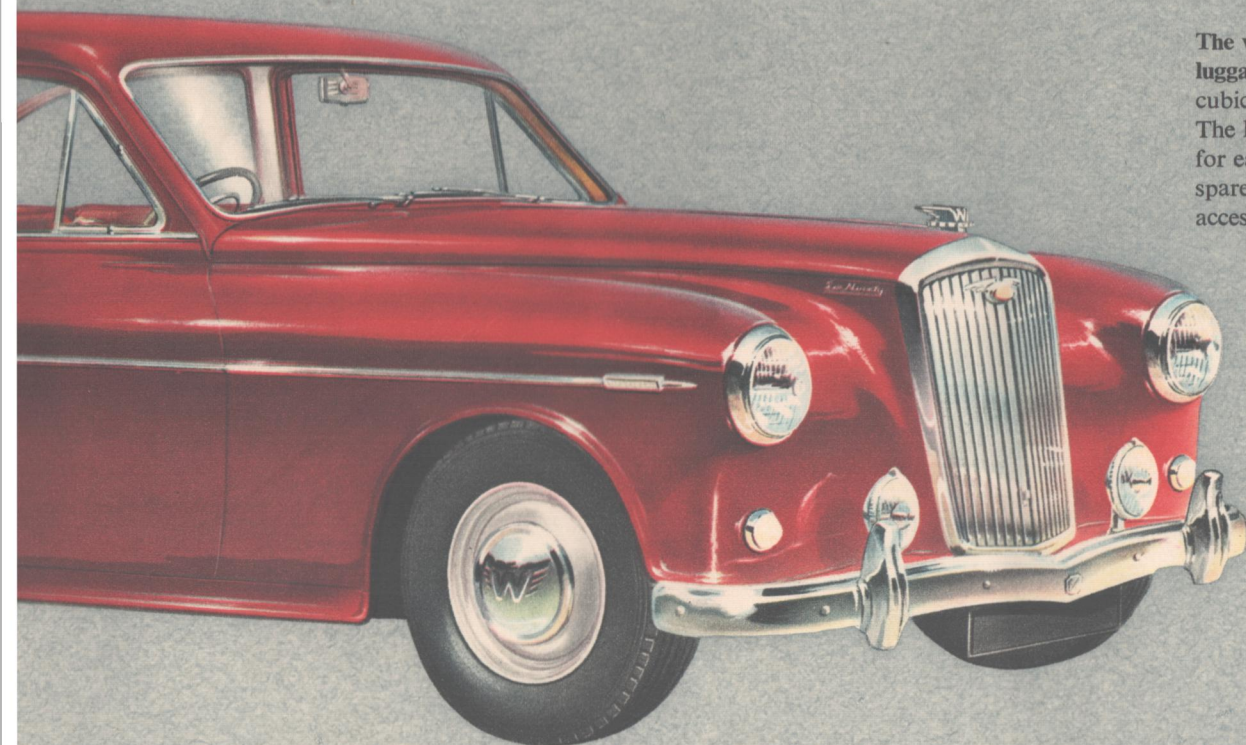


The beautifully styled walnut fascia panel includes two large instrument dials, illuminated by 'black light' for night driving. Typical safety features are the deep-sunk-centre steering wheel, fascia protection rail, and safety-glass windows. Provision is made for fitting H.M.V. car radio.

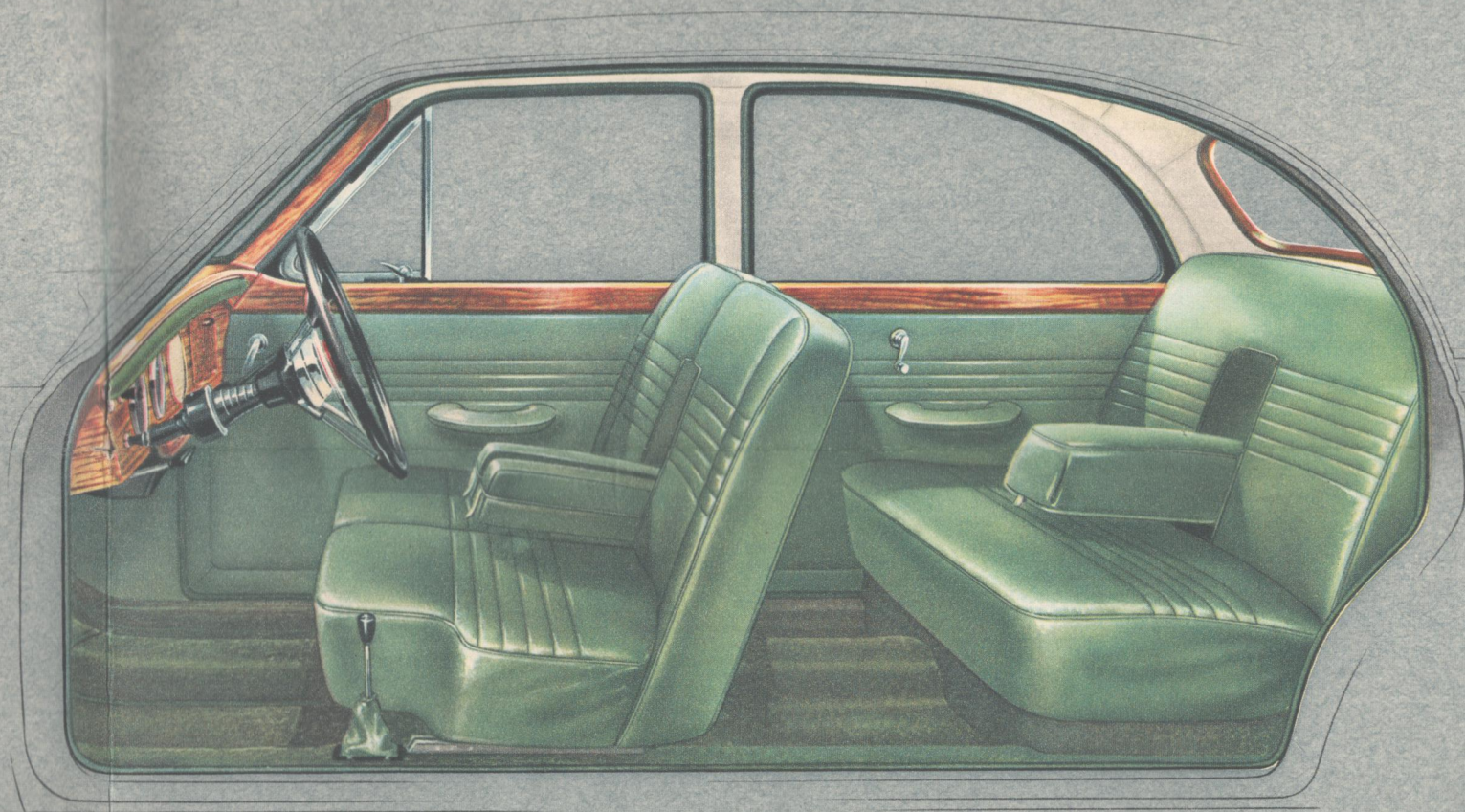
Gear changing is made delightfully easy by placing the gear lever between the driver's seat and the door. This short, positive lever and the hydraulically actuated clutch with its smooth, light action are greatly favoured by lady drivers.



The very wide and deep luggage locker provides 11 cubic feet (·3 cu. m.) of space. The lid is counterbalanced for ease of opening and the spare wheel is mounted accessibly beneath the floor.



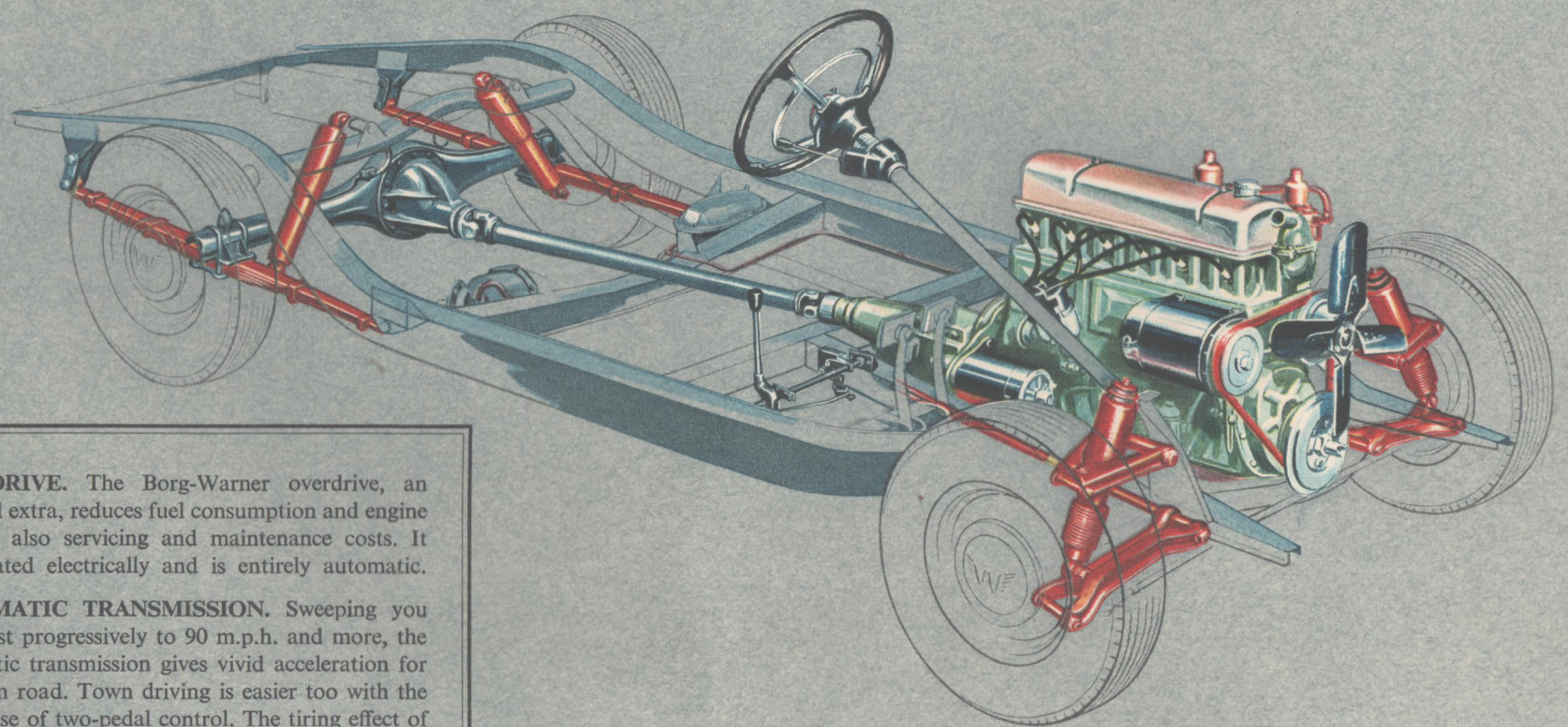




Deep-pile carpets with thick underfelt give warmth and comfort to your feet. Seats are upholstered on hard-wearing parts with genuine English leather. Polished walnut fascia panel and door cappings gladden the eye of those who seek the finer values. A combined heater/demister and ventilator is provided for your comfort winter and summer. A large curved windshield with inbuilt washing equipment and the wide, wrap-round rear window ensure excellent vision.



The wide-opening doors allow easy and dignified entry and exit. Windows wind down to their full extent and children's safety-type locks are fitted.



**OVERDRIVE.** The Borg-Warner overdrive, an optional extra, reduces fuel consumption and engine stresses, also servicing and maintenance costs. It is operated electrically and is entirely automatic.

**AUTOMATIC TRANSMISSION.** Sweeping you from rest progressively to 90 m.p.h. and more, the automatic transmission gives vivid acceleration for the open road. Town driving is easier too with the extra ease of two-pedal control. The tiring effect of intermittent travel in congested traffic is reduced to the minimum by the absence of manual gear changing. Automatic transmission is also an optional extra.

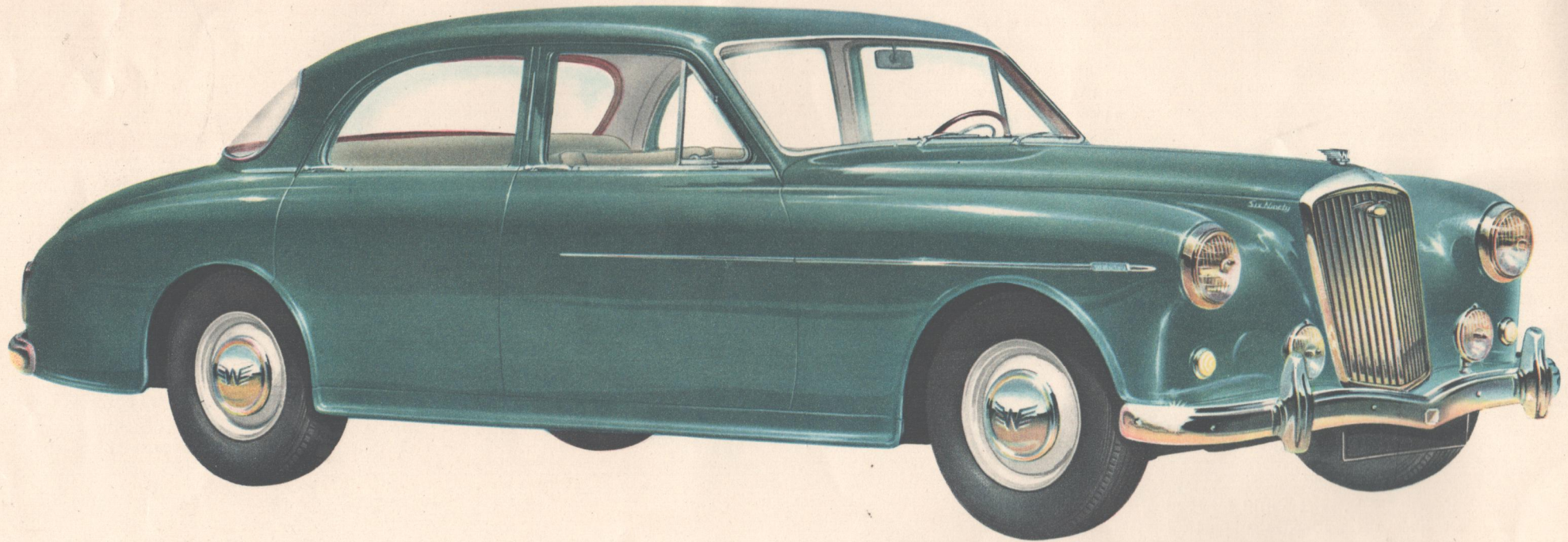
*Detailed literature is available describing these two mechanisms*

The Six-Ninety chassis of welded box-section steel is extremely rigid. Independent front suspension by long torsion bars and rear semi-elliptic springs give firm road holding at all speeds. The silent 2.6-litre six-cylinder o.h.v. engine is machined to extremely fine tolerances. Hydraulic brakes have large lining areas.



# DISTINGUISHED COMPANY INDEED

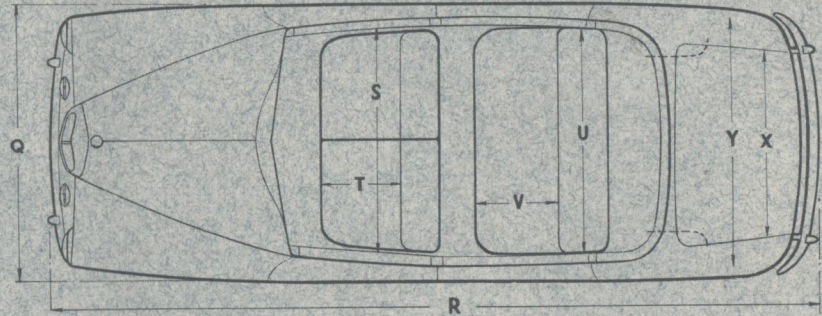
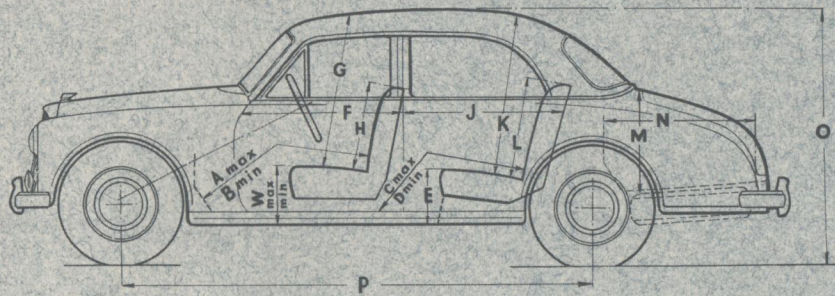
GRACEFULLY MODERN, the Wolseley Six-Ninety is the distinctive companion for every worthwhile occasion. Craftsman-built with meticulous care, the Wolseley is a worthy ambassador of its owner's fine taste. Offering so many more of the desirable things that really count in motoring at so little more cost than the ordinary car, the Six-Ninety is a luxurious, satisfying form of travel. It is truly a car to be enjoyed.



BUY WISELY—BUY WOLSELEY



# DIMENSIONS



A	B	C	D	E	F	G	H	J	K	L	M
3 ft. 11 in. 1.20 m.	3 ft. 7 in. 1.09 m.	3 ft. 10 in. 1.17 m.	3 ft. 6 in. 1.07 m.	1 ft. 2½ in. 37 cm.	2 ft. 9½ in. 85 cm.	3 ft. 2 in. 96.4 cm.	1 ft. 9½ in. 55 cm.	2 ft. 9½ in. 85 cm.	3 ft. 0 in. 91 cm.	1 ft. 11½ in. 60 cm.	1 ft. 7 in. 48 cm.
N	O	P	Q	R	S	T	U	V	W	X	Y
2 ft. 7 in. 78 cm.	5 ft. 2 in. 1.57 m.	9 ft. 5½ in. 2.883 m.	5 ft. 7 in. 1.70 m.	15 ft. 8 in. 4.775 m.	4 ft. 7½ in. 1.41 m.	1 ft. 6½ in. 47 cm.	4 ft. 7½ in. 1.41 m.	1 ft. 6½ in. 47 cm.	1 ft. 0½ in. 32 cm.	3 ft. 4 in. 1.016 m.	5 ft. 2 in. 1.57 m.

## High-stability Servo-assisted Brakes

THESE new brakes give still greater efficiency and stopping power than ever, with less effort from the driver. The power assist is taken from the engine induction manifold and a large vacuum reservoir ensures continued operation even with the engine stopped.



0039

# SPECIFICATION

**ENGINE:** Six cylinders: bore 79.375 mm. (3.125 in.), stroke 88.9 mm. (3.5 in.), cubic capacity 2639.4 c.c. (161 cu. in.). Compression ratio 8.3 : 1, power output 97 b.h.p. at 4,750 r.p.m. (An alternative compression ratio of 7.2 : 1 is available in some overseas markets, in which case the power output is 90 b.h.p. at 4,250 r.p.m.) Overhead valves operated by push-rods from 4-bearing camshaft driven by duplex roller chain with silent chain tensioner. Counterbalanced 4-bearing crankshaft dynamically balanced. Crankshaft vibration damper.

**COOLING:** By pressurized system assisted by impeller pump and fan. Circulation thermostatically controlled.

**IGNITION:** Battery and coil. Positive earth wiring. Centrifugally and vacuum controlled automatic advance and retard with micrometer setting. Distributor driven from camshaft by helical gears.

**CARBURATION:** Twin S.U. automatic carburettors with air silencer and cleaner. Fuel supply by rear-mounted S.U. high-pressure electric pump from 13-gallon tank (59 litres, 15½ U.S. gals.).

**LUBRICATION:** Pressure lubrication by eccentric rotor pump driven from camshaft by helical gears and inclined shaft. Large renewable element external oil filter.

**TRANSMISSION:** Through Borg & Beck single-plate dry clutch with hydraulic actuation. Four-speed gearbox with synchromesh on second, third, and top; overall ratios—first 13.591 : 1, second 8.446 : 1, third 5.883 : 1, top 4.1 : 1, reverse 18.421 : 1, overdrive (optional extra) with top gear 2.87 : 1. Remote control gear change by short lever at side of driver. Final drive by needle-bearing propeller shaft with reverse-spline sliding joint to three-quarter-floating hypoid rear axle.

**CHASSIS:** Sturdy box-section chassis frame.

**BODY:** All steel with turret-type roof. Large one-piece curved windshield and rear window. Full-width bumpers front and rear with over-riders.

**SUSPENSION:** Independent front wheel suspension by torsion bars splined into wishbones attached to lower end of king-pins; top end of king-pins attached to upper wishbones. Rear suspension by semi-elliptic springs. Telescopic hydraulic dampers front and rear.

**WHEELS AND TYRES:** Dunlop 6-00—15 tyres on 5-stud-fixing disc-type wheels; spare wheel and tyre housed in special carrier under luggage locker.

**BRAKES:** Servo-assisted, high-stability hydraulic brakes. Hand brake cable operated from pull lever alongside steering column through relay lever, acting on rear shoes.

**STEERING:** Cam and lever steering box actuating track-rod direct; tie-rods connect track-rod to steering levers on king-pins. Three-spoke safety-type steering wheel with horn ring. Right- or left-hand steering available according to market; left-hand not available in the United Kingdom.

**ELECTRICAL EQUIPMENT:** Belt-driven ventilated dynamo; constant voltage control. Two dipping headlights incorporating Lucas light units with block lenses and prefocused bulbs. Separate parking lights mounted below headlights. Instrument panel light gives indication when lights are switched on. Hand-operated dipping switch mounted on steering column, with indicating light on facia panel when lights are at 'full beam' position. Stop and tail lights, with rear reflectors. Number-plate and reversing light mounted on lid of luggage locker. Two fog lights. Two interior roof lights operated by automatic switches on rear doors and individually. Instrument panel lighting. Illuminated name badge. Dual-arm, switch-operated windshield wipers with auto-

matic parking. Twin windtone horns. Direction indicators with self-cancelling control in steering wheel hub.

**INSTRUMENT PANEL:** Electric clock; large speedometer with trip recorder; ammeter; fuel gauge; oil gauge; engine temperature indicator; starter switch; ignition lock-type switch; light switch; mixture control; panel light switch; ignition warning light; headlight beam warning light; blower switch; ventilating and heating control; scuttle fresh air intake control; fog light switch; windshield wiper switch; windshield washer switch.

**BODY EQUIPMENT:** Triplex safety glass all round. Deep well-sprung leather-covered cushions with leather-cloth on non-wearing parts. Pile carpets. Three ashtrays. Driving mirror with anti-glare control. Hinged ventilation panels on front doors. Fixed door handles with press-button door release; door locks. Centre and side arm-rests to rear seat. Loop-type front door-pull on driver's door. Divided bench-type front seat with twin arm-rests, adjustable fore and aft. Parcel shelf behind rear seat. Glovebox with lock in facia on passenger's side. Large luggage locker with counterbalanced lid. Polished wood facia with sponge rubber protection rail. Polished wood garnish rails. 3½-kilowatt car heater and ventilator controlled from quadrant on facia; demisting air ducts inbuilt below windshield and connected to heater. Controllable scuttle fresh air intake. Cigar lighter. Two sun visors. Provision for H.M.V. car radio. Windshield washing equipment. All left-hand-drive vehicles are fitted with flashing direction indicators (overseas only). Rim-embellishers.

**COLOURS:** Black with green, maroon, or biscuit upholstery and Black wheels. Alhambra Green with light grey or biscuit upholstery and Alhambra Green wheels. Maroon with maroon or biscuit upholstery and Maroon wheels. Yukon Grey with maroon, green, or light grey upholstery and Yukon Grey wheels. Champagne with maroon upholstery and Champagne wheels. Swiss Grey with maroon, light grey, or green upholstery and Swiss Grey wheels.

*The issue of this folder does not constitute an offer, and the right is reserved to alter prices and/or specifications at any time without notice. Sales are conditional upon Terms of Business, Warranties and Service arrangements issued by Wolseley Motors Ltd. and/or Nuffield Exports Ltd. For prices, see separate list.*

**WOLSELEY MOTORS LIMITED**  
Proprietors: MORRIS MOTORS LIMITED  
COWLEY, OXFORD

**OVERSEAS BUSINESS:**  
**NUFFIELD EXPORTS LIMITED**  
Proprietors: MORRIS MOTORS LIMITED  
COWLEY, OXFORD, ENGLAND

