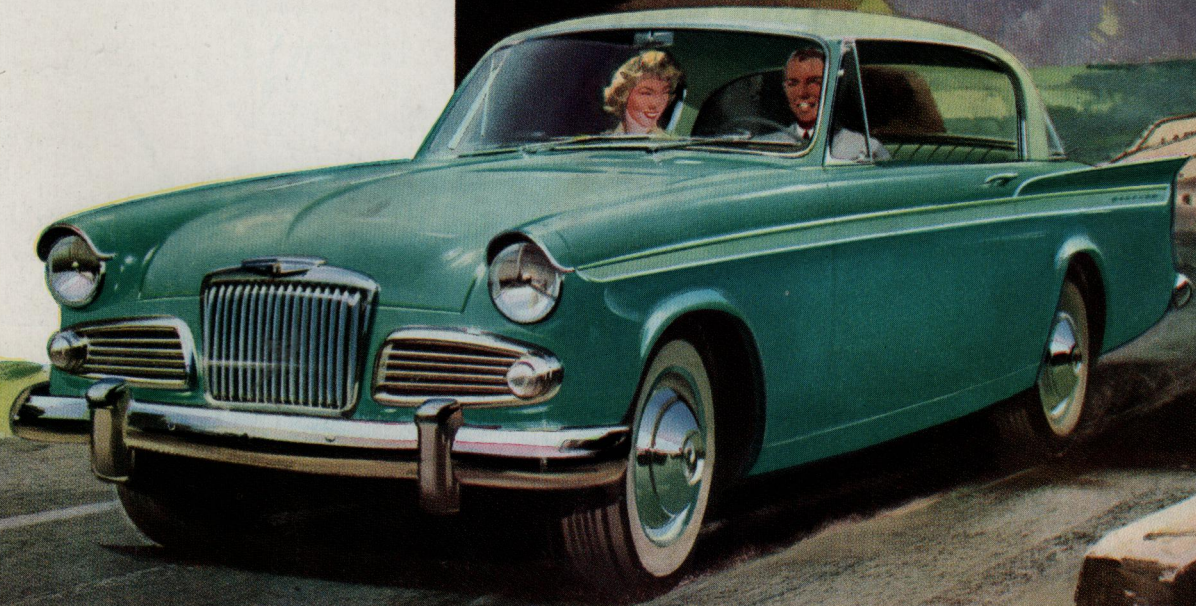
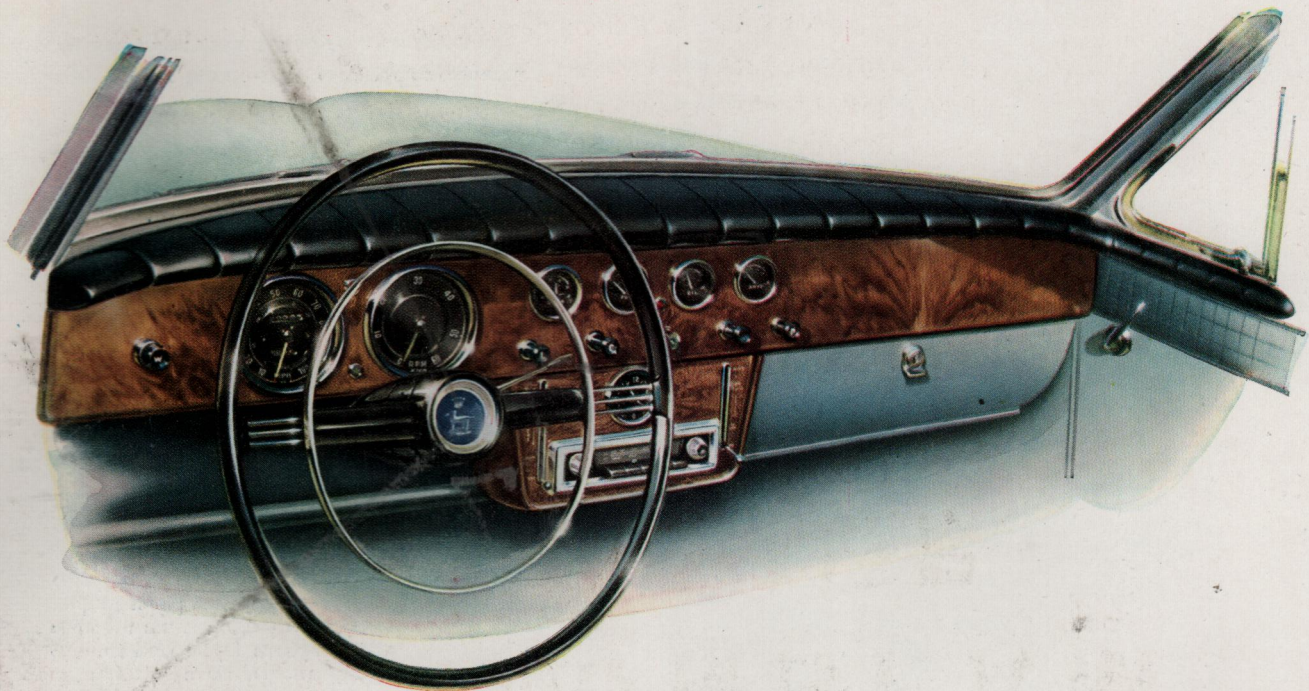


NEW  
**SUNBEAM  
RAPIER**

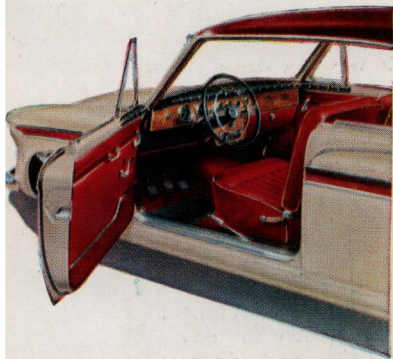
60





### ***Superbly Planned for Perfect Driving Comfort***

In the comfortable, fully adjustable driving position all controls are immediately to hand; the instruments conveniently grouped for quick reading in a smart fascia panel, finished in walnut veneer. The short, easy-to-operate centre-floor gear lever provides rapid, positive changes. Standard equipment includes revolution counter, water, fuel and oil gauges, ammeter, two speed wipers, panel flood light, choke control and cigar lighter. There is provision for overdrive, radio, heater and clock as extras. A lockable glove box and parcel tray are provided. Note the smart, padded safety roll fitted to the top of the fascia panel.



# **NEW**

# **SUNBEAM**

# **RAPIER**

From a marque pre-eminent in the world of competition motoring comes a brilliant New Sunbeam Rapier . . . bred from the experience which has brought consistent success to the time-honoured name of Sunbeam.

Up-to-date technical advancements, skilfully blended into the well-proved Rapier design, endow this quality car with even greater performance; more safety – plus reliability and economy.

Concealed beneath the swift elegance of the smartly styled body lines is a superbly designed 1½ litre Power Unit; precision built to place added force behind the keen, spirited Rapier thrust.

As you relax in the luxury and comfort of this exciting new model you will appreciate the rare discernment applied to every detail . . .

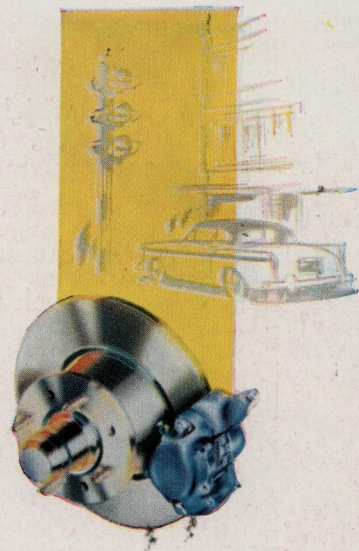
the spacIOUSness, the generous legroom and the all-commanding forward vision.

A turn of the ignition/starter key – and the engine leaps to life, ready to take you on the road to exhilarating motoring pleasure, in the manner that has taken Sunbeam along the road to Rally fame.

## DISC BRAKES

### *More Stopping Power—More Safety*

For maximum safety, fade resistant Disc Brakes are fitted to the front wheels of the New Sunbeam Rapier. These combine with large-area drum brakes on the rear wheels to form an extremely effective braking system, consistent with the high speeds achieved by the new Rapier Power Unit. Now you have good reason for really confident driving – the assurance of smooth, effortless braking under all road conditions. Disc Brakes are self-adjusting and completely unaffected by weather conditions. Here is highly efficient braking power where you need it most – a technical advancement to add to your motoring pleasure.





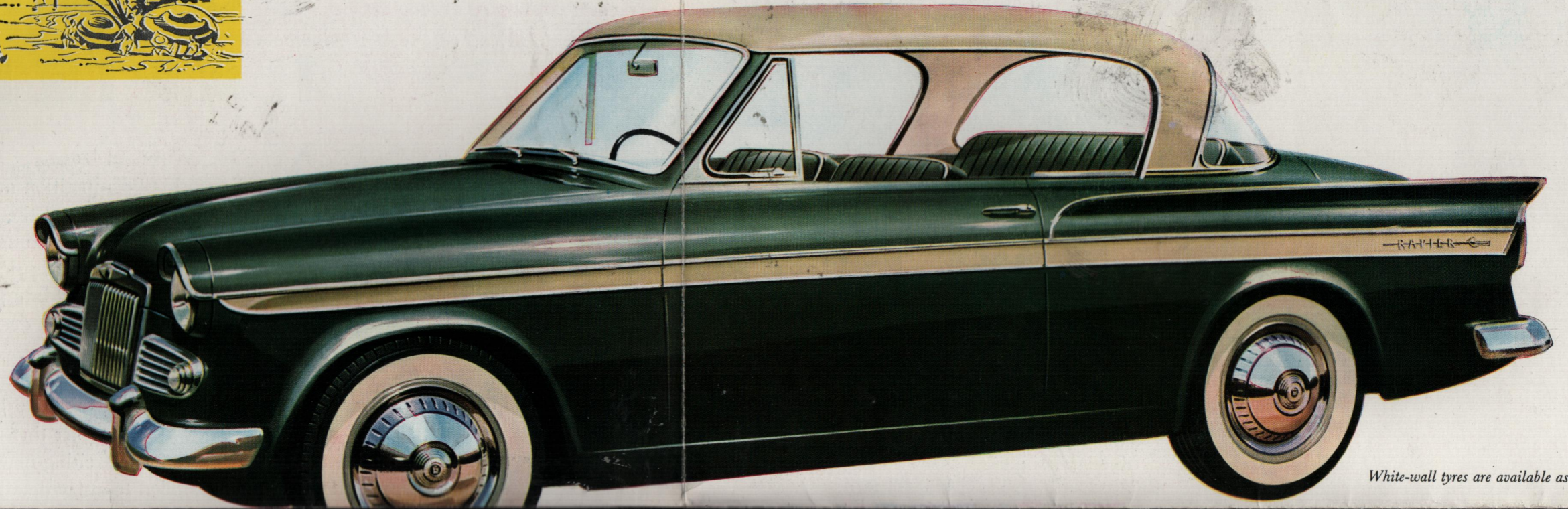
### ***Interior Elegance Enriched with Luxury and Comfort***

See the exceptional elegance and luxury of this spacious, planned-to-perfection interior . . . its delightful two-tone trim and its quality appointments. Feel the complete comfort of the beautifully upholstered seats. Well-cradled within the wheelbase they are ideally sprung and cushioned in foam rubber. The front seats are fully adjustable for legroom, and tilt forward to allow easy access to the rear compartment. Special quick-action window regulators facilitate speedier raising or lowering of the side windows.

# NEW SUNBEAM RAPIER

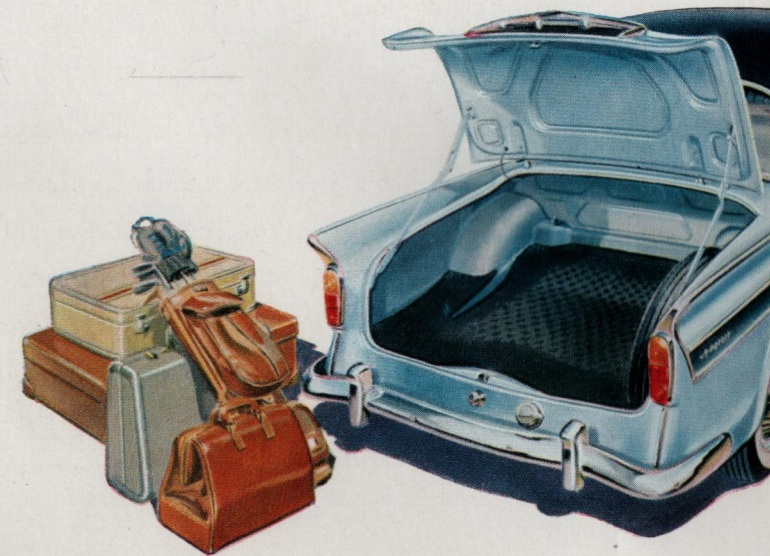
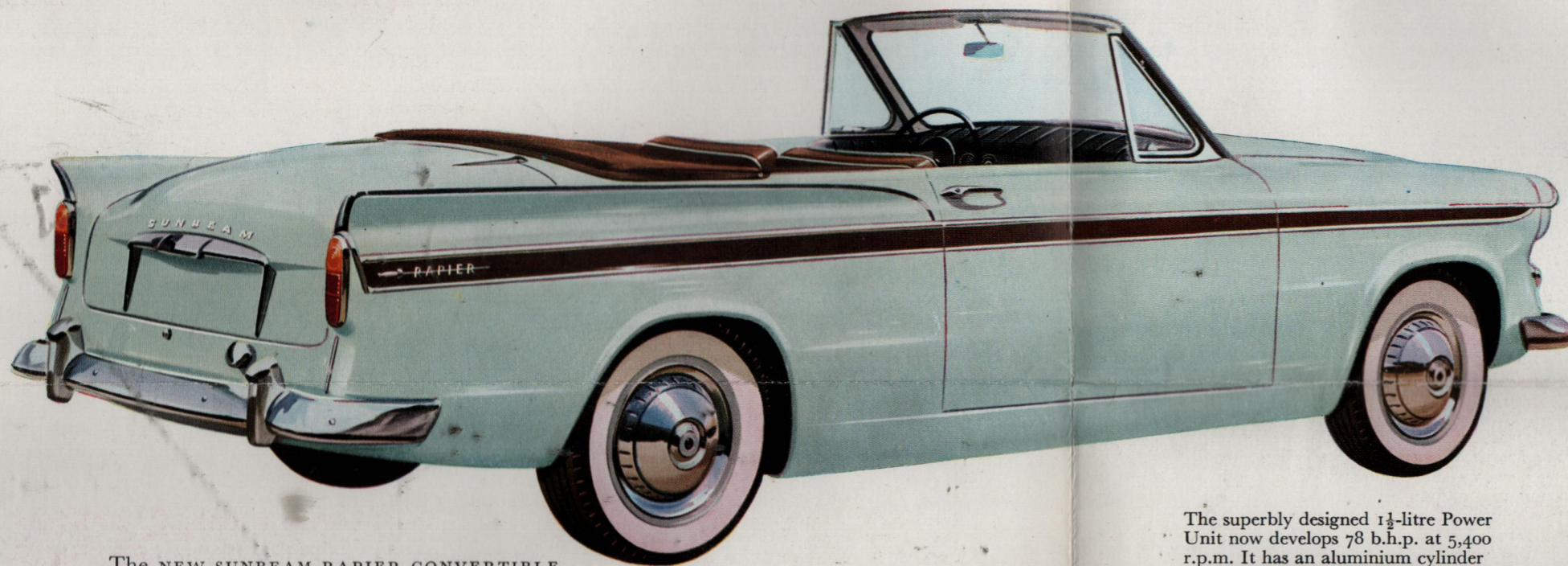
*More Surging Power Plus Matching Safety*

60



*White-wall tyres are available as an extra.*

Sunbeam mastery of modern, aerodynamic styling is brilliantly displayed in this exciting rally-bred car. Here is exclusive smartness, elegance . . . beauty with a purpose . . . all combined to bring you a Sunbeam Rapier of outstanding design. New, ultra-smart radiator side-grilles provide added distinction to the front end treatment, which retains the traditional Sunbeam characteristics. Note how the headlamp cowlings have been neatly styled into the wings. Salient feature of the functional styling is the deeper, wider windscreen which not only enhances the car's lithe appearance but also provides a new degree of driving safety. The sleek flowing lines of the New Sunbeam Rapier gain further elegance from the new-look side flash of contrasting colour. No other car reflects such personality . . . such individual good taste.



There's room for all your needs in this spacious, weather-sealed luggage compartment, designed and built to make the best use of every inch. The lid is spring-assisted and stays open for easy loading.

#### THE NEW SUNBEAM RAPIER CONVERTIBLE

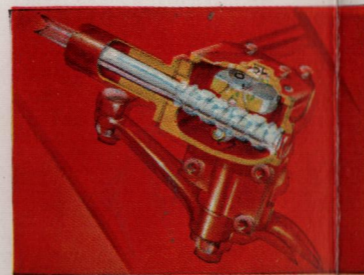
There are two exciting Sunbeam models to choose from . . . a Sports Saloon and a smart Convertible. On the Convertible, which has all the luxury features of the Saloon, the smartly tailored top can be quickly adjusted to any of three positions. Fully closed you have a draught-proof cosy saloon. Half open, a chic coupé-de-ville. Fully open, you have an open car of sporting appearance, with the top fully concealed.



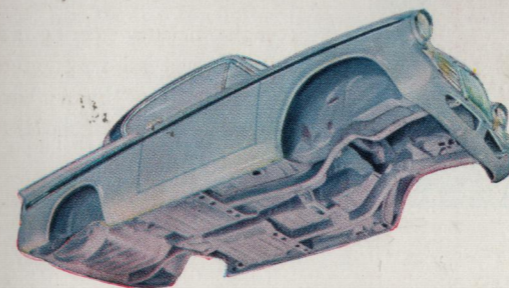
The rear quarter-lights can be fully opened and closed, or adjusted to any degree of ventilation.



Operating on top and third gears, Laycock-de Normanville Overdrive, available as an extra, further improves performance and economises on fuel.

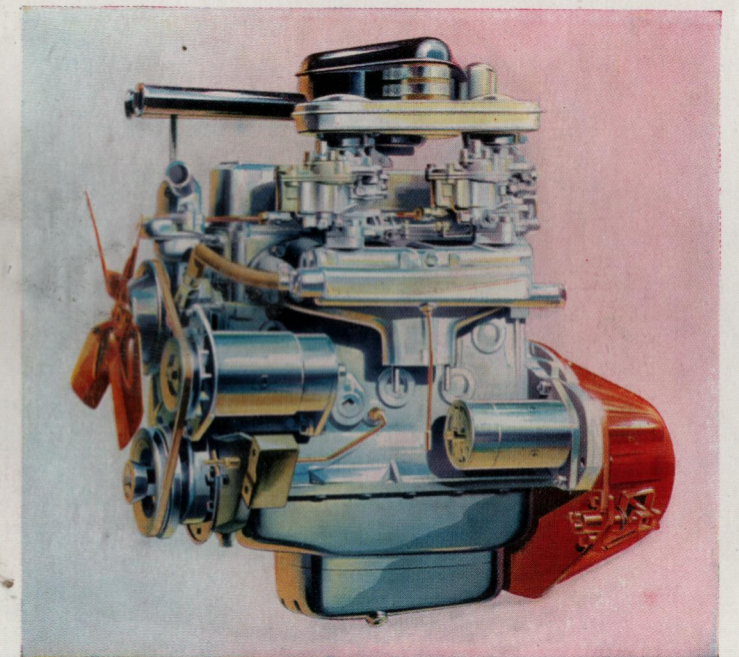


A high-efficiency steering unit of recirculating ball design gives precision control - makes handling easy under all road conditions.



The Sunbeam Rapier has all-steel unitary construction, the strongest and safest form of body-chassis structure.

The superbly designed 1½-litre Power Unit now develops 78 b.h.p. at 5,400 r.p.m. It has an aluminium cylinder head, specially cast to ensure maximum thermal efficiency, thus allowing the compression ratio to be increased to 9.2 : 1. Inclined overhead valves follow an entirely new arrangement of inlet and exhaust porting for excellent heat distribution, while twin carburettors and a special water-heated inlet manifold of advanced design combine to give crisper, livelier overall performance. Other up-to-date engine features include a high tensile steel crankshaft fitted with a torsional vibration damper for smoother running, and an unusually rigid cylinder block for longer engine life.



60

**Engine.** Four cylinder O.H.V.; bore 79 mm. (3.11 in.); stroke 76.2 mm. (3 in.); 1,494 c.c. (91.2 cu. in.); maximum b.h.p. 78 at 5,400 r.p.m.; three-bearing crankshaft and camshaft; steel 'H' section connecting rods; pressure lubrication with external full-flow filter; Twin Zenith down-draught carburettors; oil bath air cleaner. Compression ratio 9.2 : 1. For certain overseas markets a low compression ratio is available, for details ask your Dealer.

**Clutch.** 8 in. single dry plate, hydraulically operated.

**Gearbox.** Four-speed. Control ring synchromesh on top, 3rd and 2nd gears. Centre-floor gear change lever. Overall ratios: Top 4.55 : 1; 3rd 6.341 : 1; 2nd 9.751 : 1; 1st 15.244 : 1; Reverse 19.309 : 1.

**Rear axle.** Semi-floating with spiral bevel final drive. Ratio 4.55 : 1.

**Brakes.** Lockheed hydraulic system. Front disc brakes 10.81 in. (275 mm.) diameter. Rear 9 in. (229 mm.) diameter brake drums. Swept area—Front 212 sq. in. (13.67 dm.<sup>2</sup>); Rear 99 sq. in. (6.39 dm.<sup>2</sup>). Handbrake operates on rear wheels.

**Suspension.** Front: Independent coil spring. Rear: Semi-elliptic leaf springs. Telescopic, direct acting shock absorbers

**Steering.** Two sprung-spoke wheel operating recirculating ball steering. Horn ring control.

**Chassis construction.** Unitary.

**Wheels and tyres.** Tyres: 5.60 × 15 tubeless cushion. Wheels embellished by nave plates, wheel discs and rimfinishers.

**Electrical equipment.** Large capacity battery under bonnet; Solenoid operated starter; Lucas dynamo, coil and distributor; two double-dipping headlamps; separate side lamps; built-in twin stop/tail lamps, and reflectors; self-cancelling flashing indicators; two-speed automatic park windscreen wipers; courtesy roof light; thermostatically controlled cigar lighter.

**Instruments.** Speedometer including trip and mileage recorder; revolution counter; fuel gauge, oil pressure gauge; ammeter; thermometer and warning lights for flashers, headlamp beam and ignition.

**Optional extras.** The following extras are available ex factory at extra cost and can only be specified at the time of placing the order:

Smiths Radiomobile or Ekco Radio; Heating and ventilating equipment; Overdrive and White-wall tyres.

**Special accessories (available at extra cost).** An attractive range of optional accessories is available, including Reversing lamp and Clock, etc. Full details may be obtained from your Rootes Dealer.

**Dimensions and weights (approx.).** Length 162.5 in. (4.127 m.); Width 60.75 in. (1.543 m.); Height: Saloon 58 in. (1.473 m.), Convertible 57.5 in. (1.461 m.); Weight unladen (with petrol and water): Saloon 2,360 lb. (1070 kg.), Convertible 2,355 lb. (1068 kg.). For full details of Chassis and Body dimensions, please ask your Dealer for separate brochure.

### COLOUR SCHEMES

#### Sports Saloon

The first named colour is the predominant body colour and the second is the roof and side flash.

Moonstone/Morocco Brown with Rich Brown upholstery.

Moonstone/Powder Blue with Powder Blue upholstery.

Velvet Green/Sage Green with Green upholstery.

Ash Grey/Pippin Red with Grey upholstery.

Powder Blue/Corinth Blue with Powder Blue upholstery.

Pearl Grey/Pippin Red with Pippin Red upholstery.

#### Convertible

The first named colour is the predominant body colour and the second is the side flash.

Moonstone/Morocco Brown with Rich Brown upholstery and Morocco Brown or Black hood.

Moonstone/Powder Blue with Powder Blue upholstery and Powder Blue or Black hood.

Velvet Green/Sage Green with Green upholstery and Sage Green or Black hood.

Ash Grey/Pippin Red with Grey upholstery and Pippin Red or Black hood.

Powder Blue/Corinth Blue with Powder Blue upholstery and Corinth Blue or Black hood.

Pearl Grey/Pippin Red with Pippin Red upholstery and Pippin Red or Black hood.

EXPORT **ROOTES** DIVISION

DEVONSHIRE HOUSE, PICCADILLY, LONDON, W.1

The Company reserves the right to alter any prices or specifications at any time, without notice, and all goods are sold subject to prices and Conditions of Sale ruling at the time of delivery.



Sales and Service  
in 160 Countries

Printed in England. STP