

**the
family
series**

"QUALITY FIRST"

MORRIS

OXFORD MKVI

OXFORD TRAVELLER

MINI-MINOR

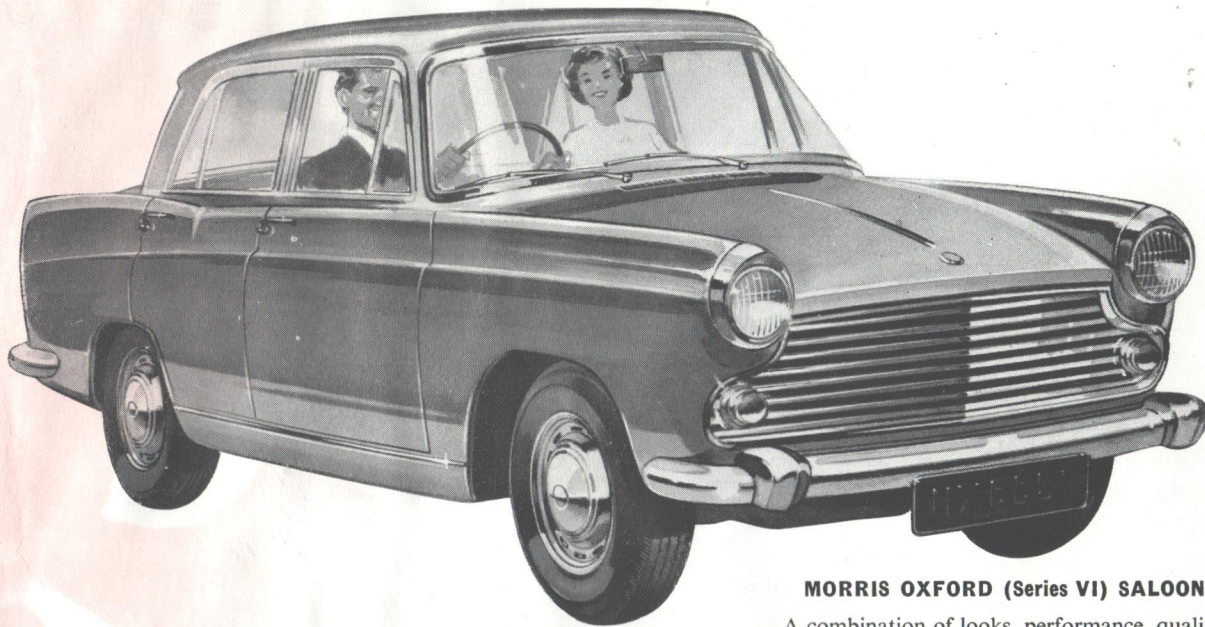
MINOR 1000

MINI-TRAVELLER

1000 TRAVELLER



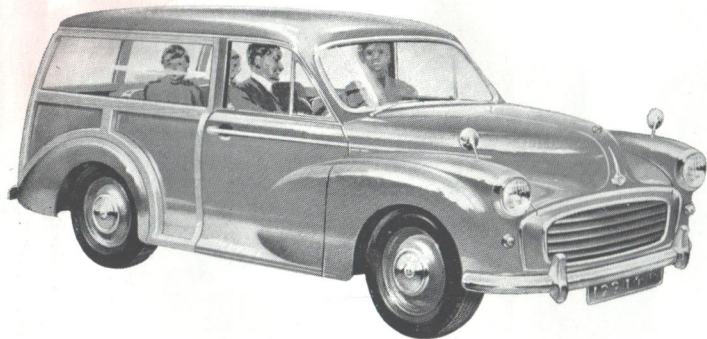
for families large - and families small!



MORRIS OXFORD (Series VI) SALOON

A combination of looks, performance, quality, and comfort. Will seat five adults easily—every journey a family treat. Available also in De-luxe version and with automatic transmission (optional extra).

Pile into
a
"QUALITY FIF
MORR



MORRIS MINOR 1000 TRAVELLER

A willing servant or a gay companion—
this car halves your
workday worries and doubles your motoring pleasures.



MORRIS MINOR 1000 SALOON

Over a million owners have proved this
to be the outstanding leader in
small-car motoring. Also available in 2-door,
De-luxe, and Convertible versions.

D
ST"
RIS



MORRIS OXFORD (Series VI) TRAVELLER

The perfect all-occasion vehicle with all the renowned Morris quality and performance. There's room for everything—except improvement! Also available with automatic transmission (optional extra).



MORRIS MINI-MINOR SALOON

The world's most exciting car—wonderfully neat and compact—makes parking easy. Available also in De-luxe, Export, and Super 850 versions



MORRIS MINI-TRAVELLER

Plenty of space for all your holiday luggage—and comfort for four adults too. This versatile little car brings you really modern motoring.

MORRIS MINI-MINOR SALOON

Models available: Basic Saloon, Export Saloon, De-Luxe Saloon, and Super 850. 848-c.c. four-cylinder o.h.v. engine. S.U. carburetter fed from a rear-mounted, improved-type S.U. electric fuel pump. Fuel tank capacity 5½ Imperial gallons (25 litres). Four-speed gearbox. Central floor gear change. Spare wheel housed in luggage boot (capacity 5½ cu. ft. (156 m.³)). Independent suspension on all wheels. Rack and pinion steering. Turning circle 31 ft. (9.43 m.). Track—front 3 ft. 11⅞ in. (1.205 m.), rear 3 ft. 9⅞ in. (1.164 m.). Safety glass all round. Parcel trays in front and rear. Large pockets in front door. Companion-boxes at each side of rear seat. Provision for fitting H.M.V. car radio and B.M.C. seat belts. Lever-type inside handles on doors on 850 model. Alternative equipment at no extra cost: L.H.D. or R.H.D.; km.p.h. or m.p.h. speedometer; lighting and flashing equipment to suit local market requirements. Optional extras (all models): car radio; laminated windscreen; fresh-air heater; white-wall tyres; Weathermaster tyres (front only). Optional extras on Basic model: windshield washer; recirculatory heater; over-riders. Optional extras on Export model: De-luxe version seats; rear window heater. Optional extras on De-luxe model: floor mats replacing carpet; recirculatory heater.

MORRIS MINOR 1000 TRAVELLER

948-c.c. four-cylinder o.h.v. engine. S.U. carburetter fed from rear tank by improved-type S.U. electric fuel pump. Fuel tank capacity 6½ Imperial gallons (29.6 litres). Central remote-control gear change lever. A spacious station-wagon-type body. Independent front suspension by long torsion bars. Semi-elliptic rear springs with rubber mountings. Folding rear seat for seating two passengers or folds forward, providing large flat platform for extra luggage. Wide double rear doors with automatic locking device. Shelf in front compartment. Safety-type steering-wheel. Twin wing mirrors. Driver's sun visor. Safety glass all round. Inbuilt demisting ducts and provision for B.M.C. seat belts and H.M.V. car radio. Alternative equipment at no extra cost: L.H.D. or R.H.D.; km.p.h. or m.p.h. speedometer; lighting and flashing equipment to suit local market requirements. Optional extras: windshield washer on Basic model; radio; white-wall tyres; heavy-duty tyres; Weathermaster tyres; laminated glass windshield; over-riders on Basic model; fresh-air heater and demisting equipment; fresh-air system.

MORRIS MINI-TRAVELLER

848-c.c. four-cylinder o.h.v. engine. S.U. carburetter fed from a rear-mounted improved-type S.U. electric fuel pump. Fuel tank capacity 6½ Imperial gallons (29.6 litres). Four-speed gearbox. Central floor gear change. Special mono-construction all-steel body. Rear seat for two passengers which folds forward, giving extra luggage accommodation. Wide double rear doors. Independent suspension on all wheels. Rack and pinion steering. Turning circle 32 ft. 9 in. (9.983 m.). Track—front 3 ft. 11⅞ in. (1.205 m.), rear 3 ft. 9⅞ in. (1.164 m.). Safety glass all round. Windshield washer. Twin wing mirrors. Parcel shelf in front compartment and pockets in each side door. Provision for fitting H.M.V. car radio and B.M.C. seat belts. Alternative equipment at no extra cost: L.H.D. or R.H.D.; km.p.h. or m.p.h. speedometer; lighting and flashing equipment to suit local market requirements. Optional extras: recirculatory heater or fresh-air heater; radio; white-wall tyres; Weathermaster tyres (front only); laminated windscreen.

MORRIS OXFORD (Series VI) SALOON

A 1622-c.c. four-cylinder o.h.v. engine. S.U. carburetter fed from rear tank by improved-type S.U. electric fuel pump. Fuel tank capacity 10 Imperial gallons (45.4 litres). Central floor or steering-column gear change. Safety-type steering-wheel with cam and peg gearbox. Independent front suspension. Semi-elliptic rubber-mounted springs at rear. Mono-construction body. Luggage boot capacity 19 cu. ft. (538 m.³) with spare wheel housed in special compartment below. Anti-roll and stabilizer bars. Glovebox in fascia and large parcel tray. Safety glass all round. Fresh-air circulation system. Provision for B.M.C. seat belts and H.M.V. car radio. Alternative equipment at no extra cost: L.H.D. or R.H.D.; km.p.h. or m.p.h. speedometer; lighting and flashing equipment to suit local market requirements. Optional extras: windshield washer on Basic model; H.M.V. car radio; duotone body colours (De-luxe models); automatic transmission; white-wall tyres; heavy-duty tyres; rimblishers; electric clock (Basic model).

MORRIS MINOR 1000 SALOON

948-c.c. four-cylinder o.h.v. engine. S.U. carburetter fed from rear tank by improved-type S.U. electric fuel pump. Fuel tank capacity 6½ Imperial gallons (29.6 litres). Central remote-control gear change lever. Mono-construction body with independent front suspension by long torsion bars. Semi-elliptic rear springs with rubber mountings. Spare wheel compartment. Rack and pinion steering. Safety-type steering-wheel. Provision for B.M.C. seat belts and H.M.V. car radio. Glovebox and parcel tray in front compartment. Safety glass all round. Inbuilt demisting ducts. Flashers incorporated in front and rear lamps. Roof lamp with courtesy switches operated by doors. Driver's sun visor. Alternative equipment at no extra cost: L.H.D. or R.H.D.; km.p.h. or m.p.h. speedometer; lighting and flashing equipment to suit local market requirements. Optional extras: radio; fresh-air heater; laminated windscreen; white-wall tyres; heavy-duty tyres; windscreen washers on De-luxe model.

MORRIS OXFORD TRAVELLER (Series VI)

1622-c.c. four-cylinder o.h.v. engine. S.U. carburetter fed from rear tank by rear-mounted, improved-type S.U. electric fuel pump. Fuel tank capacity 10 Imperial gallons (45.4 litres). Central floor or steering-column gear change. Special station-wagon-type all-steel four-door body. A double rear door with automatic locking device. Bench-type front seat. Folding rear seat for three passengers or folds flush to provide extra luggage space or sleeping accommodation. Anti-roll bar on front suspension. Spare wheel stowed below rear doors. Twin wing mirrors. Fresh-air ventilation system. Windshield washer. Provision for H.M.V. car radio and B.M.C. seat belts. Alternative equipment at no extra cost: L.H.D. or R.H.D.; km.p.h. or m.p.h. speedometer; lighting and flashing equipment to suit local market requirements. Optional extras: H.M.V. car radio; heater and demister; duotone body colours; automatic transmission.

The issue of this folder does not constitute an offer, and the right is reserved to alter prices and/or specifications at any time without notice. Sales are conditional upon Terms of Business, Warranties and Service arrangements issued by Nuffield Exports Limited. For prices see separate list.

NUFFIELD EXPORTS LIMITED

Proprietors: MORRIS MOTORS LIMITED

COWLEY, OXFORD, ENGLAND