

Maintaining the breed with streamlined Power

THE NEW



SERIES MGB

WITH 1800 c.c. ENGINE

E. SÉCHÈRE

Concessionnaire

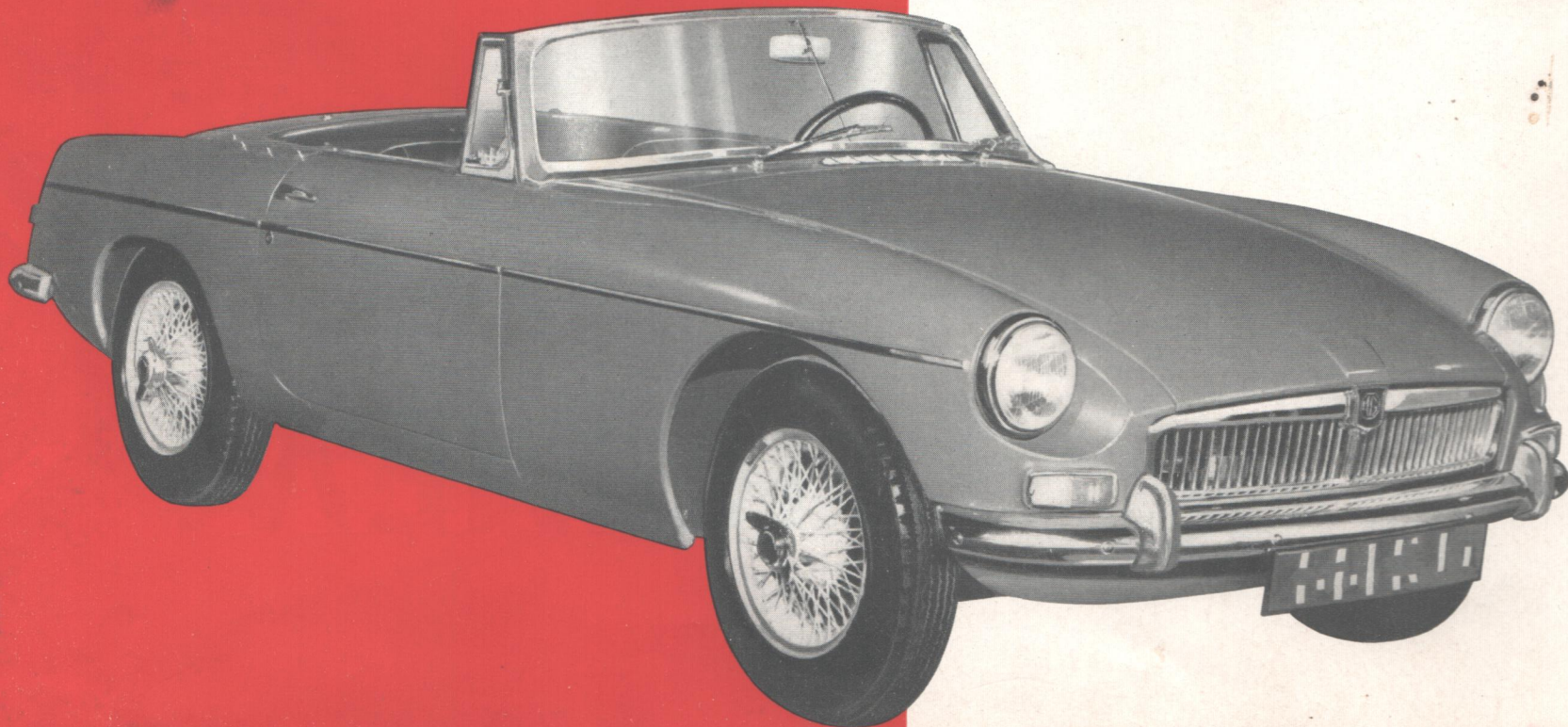
MORRIS - MG - VOLVO

Rue Théophile-Babut

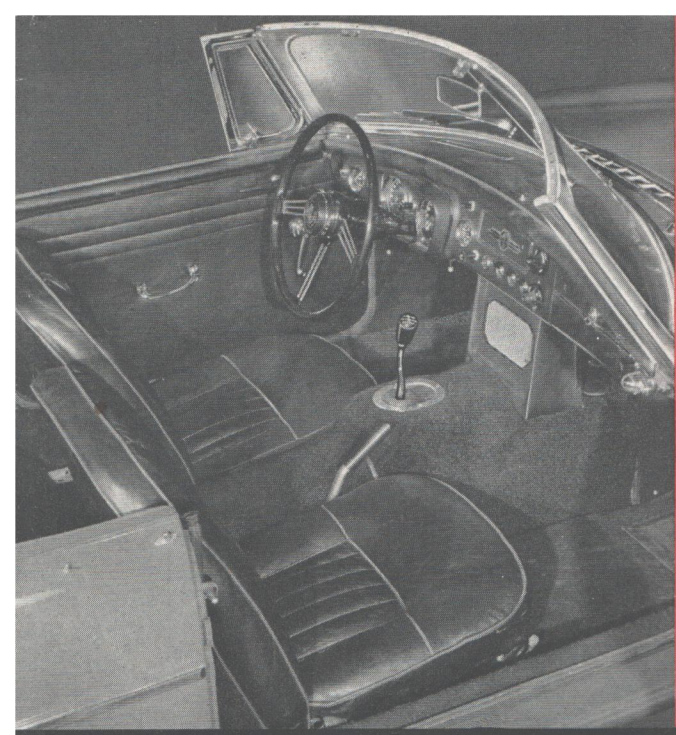
LA PALLICE

Téléphone : 28-63-88

Safety fast!



PRELIMINARY SPECIFICATION—CONFIDENTIAL



The 'MGB' is a superlative sports car with a luxurious 'cockpit' for driver and front passenger, plus ample built-in luggage space at the rear. Instruments include a large speedometer with dead-beat reading, a revolution counter, and a water temperature gauge. The snug-fitting, bucket-type seats have sprung rubber foundations with adjustable seat backs. High-quality English leather upholstery is used.

NEW Zest NEW Safety NEW Styling **M.G. (Series MGB)**

- 1798-c.c. o.h.v. four cylinder engine.
- Hydraulic disc brakes at front; drums at rear.
- Rack and pinion 'instant-response' steering.
- Strong, light, and quiet unit construction.
- Independent coil spring front suspension.
- Semi-elliptic rear springs with rubber cushioning.
- Over-riders front and rear. Front optional (Home).
- Wide-visibility, curved windshield.
- Fully winding door windows.
- Fully hinged front quarter-lights.
- Occasional rear seating.
- Cowled instruments grouped in front of driver.
- Rear-view mirror adjustable for height.
- Locks for glovebox, both doors, and boot.



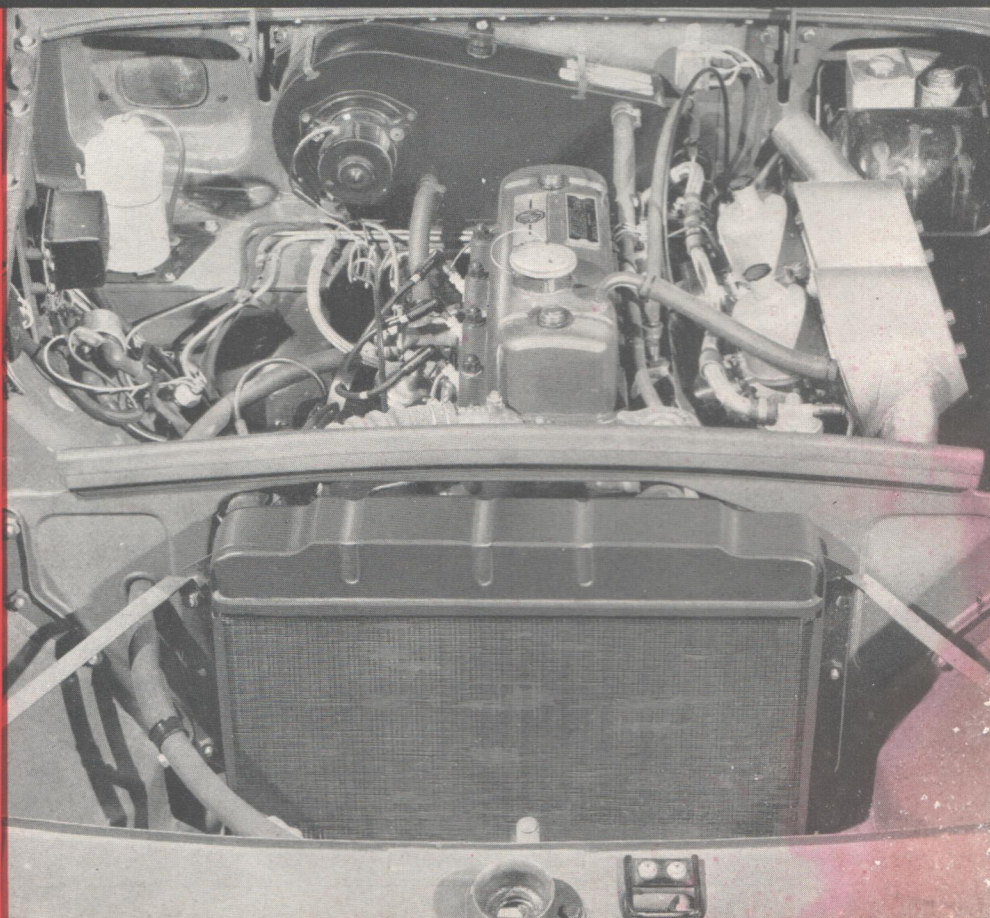
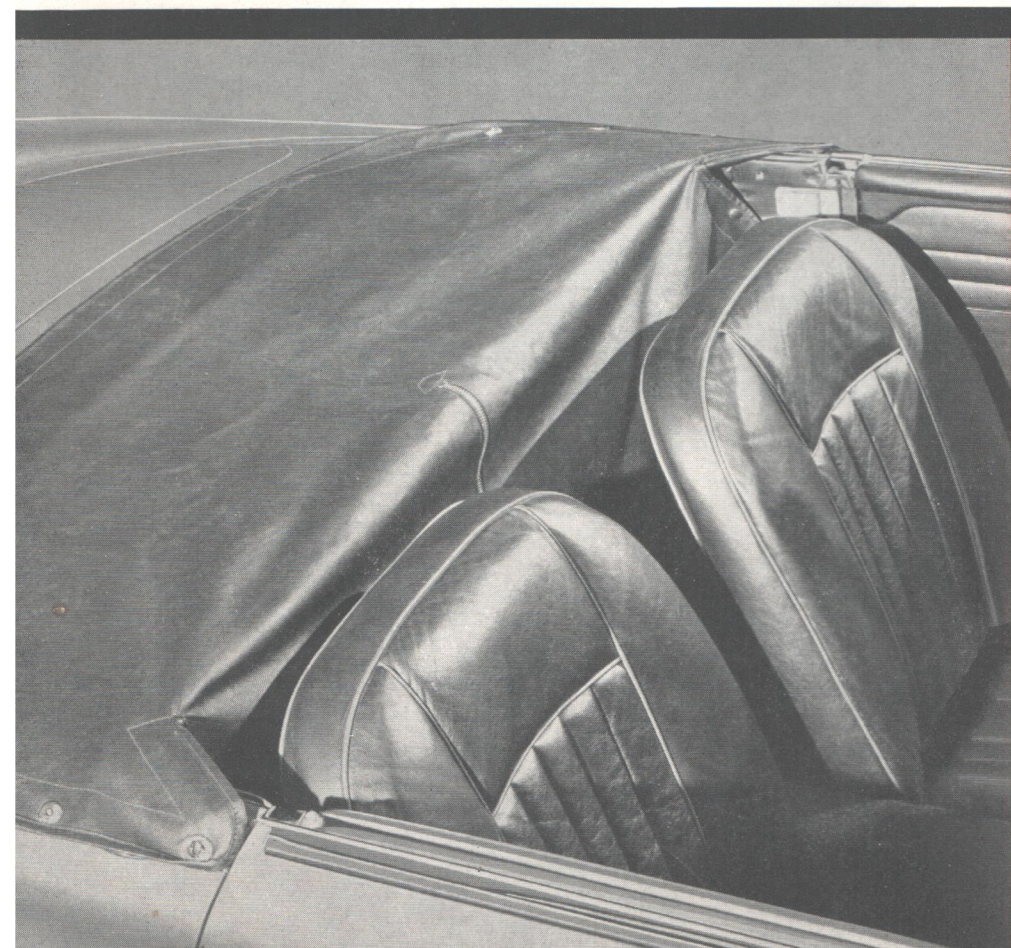
Safety fast!

The 'MGB' is a quality sports car for the alert enthusiast.

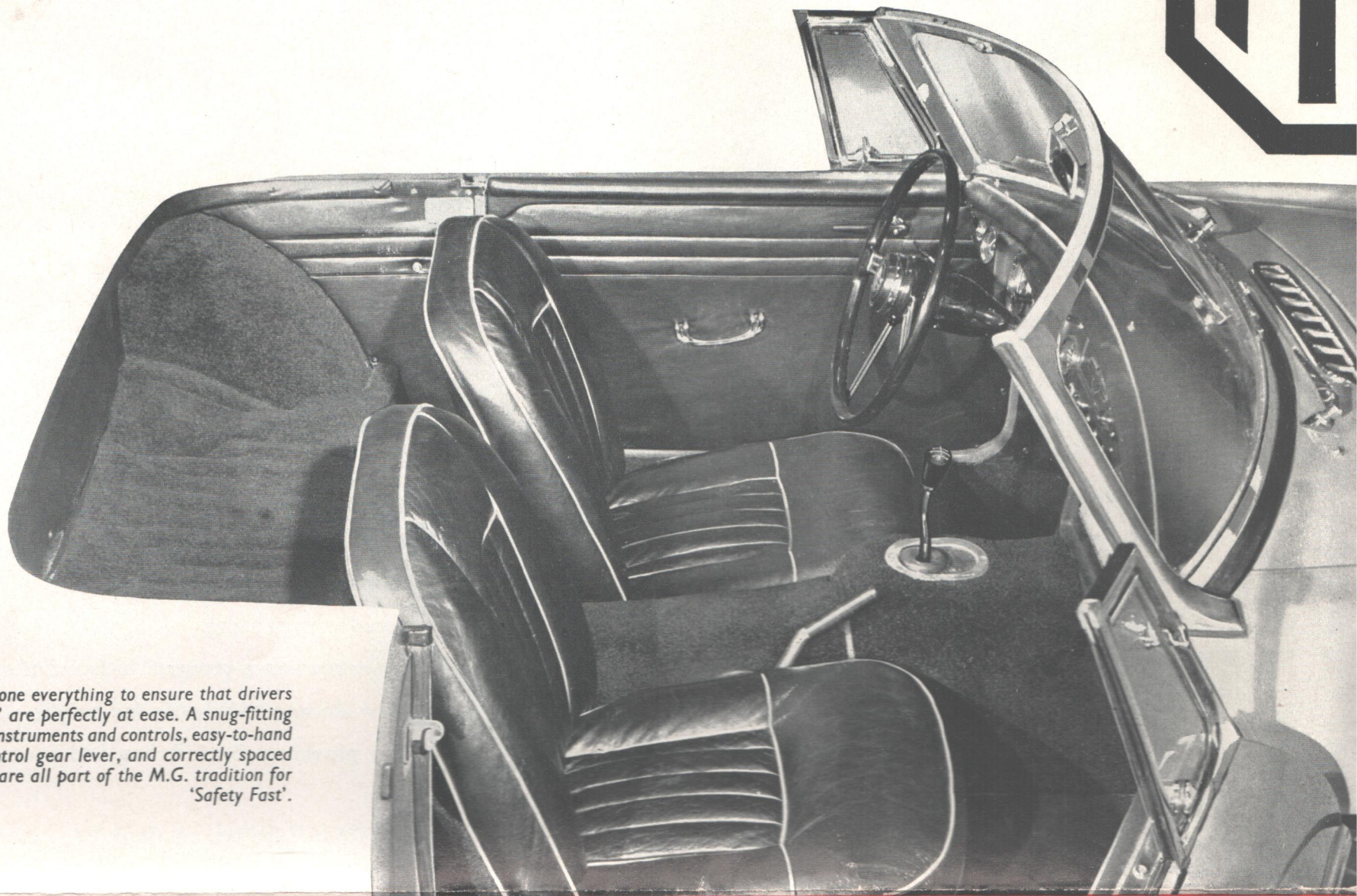
Quiet-running, with immense reserves of power for safe overtaking, it is very stable, and brakes with straight-line accuracy.

The compact engine has twin S.U. carburettors and long-life, lead-indium big-end bearings. An oil cooler is standard for Export markets.

The wide range of optional extras includes a very neat tonneau cover for the rear compartment. This space can so easily be used for extra luggage.



THE NEW

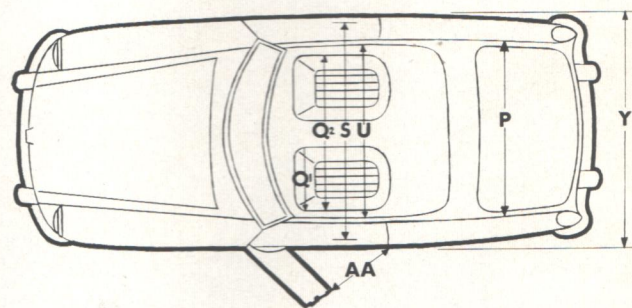
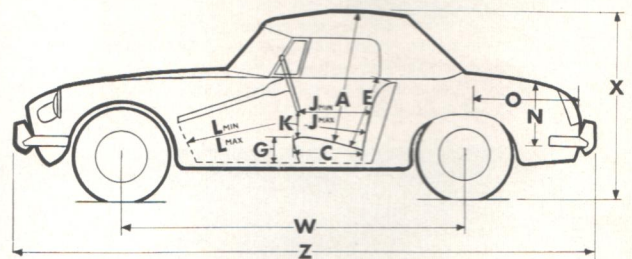


M.G. have done everything to ensure that drivers of the 'MGB' are perfectly at ease. A snug-fitting seat, grouped instruments and controls, easy-to-hand remote-control gear lever, and correctly spaced pedals are all part of the M.G. tradition for 'Safety Fast'.

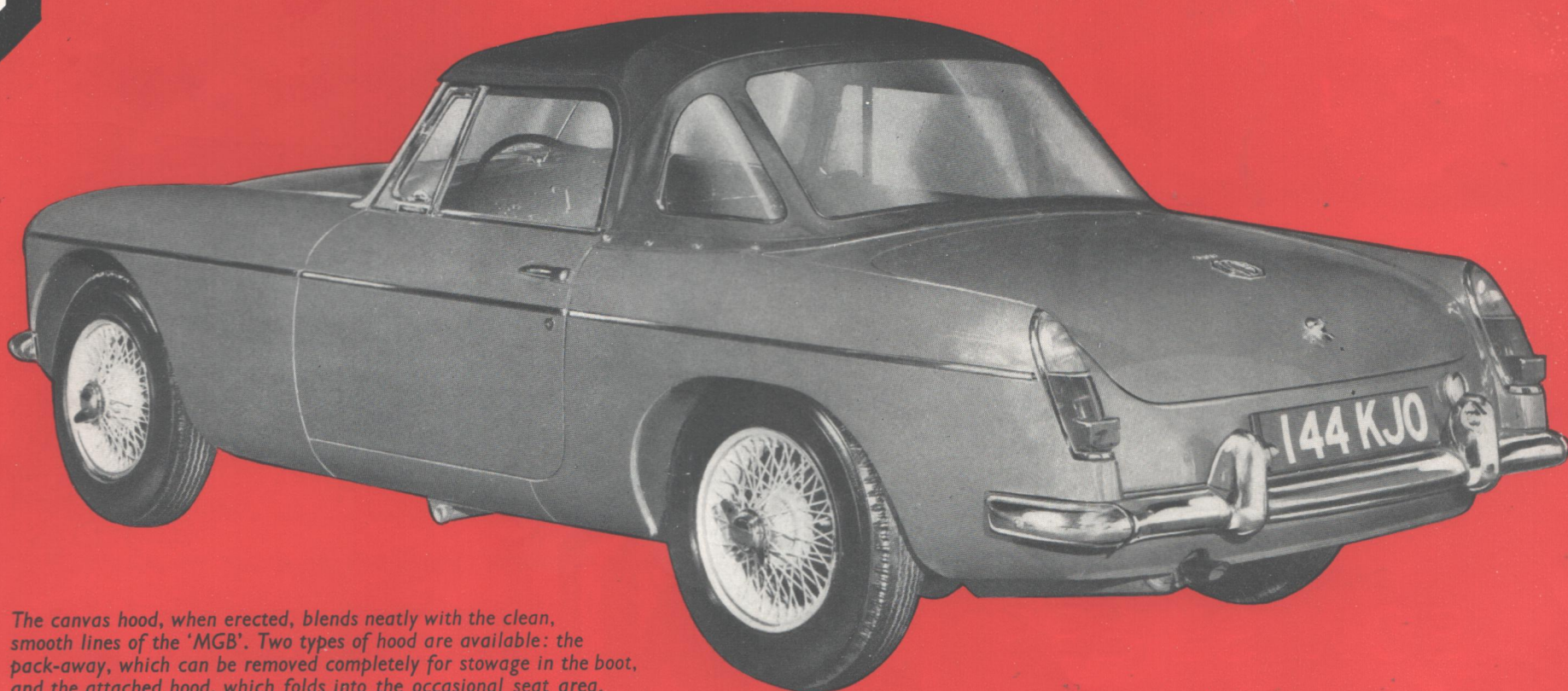
DIMENSIONS

Front seat head room ..	A	37 in.	93-98 cm.
Front seat cushion depth	C	19 in.	48-26 cm.
Front seat squab height above cushion ..	E	21 in.	53-34 cm.
Front seat cushion height above floor ..	G	9 in.	22-86 cm.
Steering wheel to squab—max.	J	22½ in.	57-15 cm.
Steering wheel to squab—min.	J	14½ in.	36-83 cm.
Steering wheel to cushion	K	6½ in.	16-51 cm.
Front seat leg reach—max.	L	52 in.	132-08 cm.
Front seat leg reach—min.	L	44½ in.	113-03 cm.
Luggage boot height ..	N	16½ in.	41-91 cm.
Luggage boot depth ..	O	29½ in.	47-93 cm.
Luggage boot width ..	P	57 in.	144-78 cm.
Front seat cushion width—individual ..	Q1	18 in.	45-72 cm.
Front seat cushion—overall width ..	Q2	44 in.	111-76 cm.
Width between front doors—max. ..	S	50½ in.	128-27 cm.
Shoulder width over front seat	U	46 in.	116-84 cm.
Wheelbase ..	W	91 in.	231-14 cm.
Overall height ..	X	49¾ in.	125-41 cm.
Overall width ..	Y	59⅞ in.	152-24 cm.
Overall length with over-riders	Z	153⅝ in.	389-10 cm.
Front door entry width ..	AA	30 in.	76-20 cm.
Track at front ..		49 in.*	124-46 cm.
Track at rear ..		49¼ in.	125-09 cm.
Turning circle—right-hand lock		32 ft.	9-75 m.
Turning circle—left-hand lock ..		32 ft.	9-75 m.
Ground clearance ..		5 in.	12-70 cm.
Unladen weight (approx.) ..		1,920 lb.	871 kg.

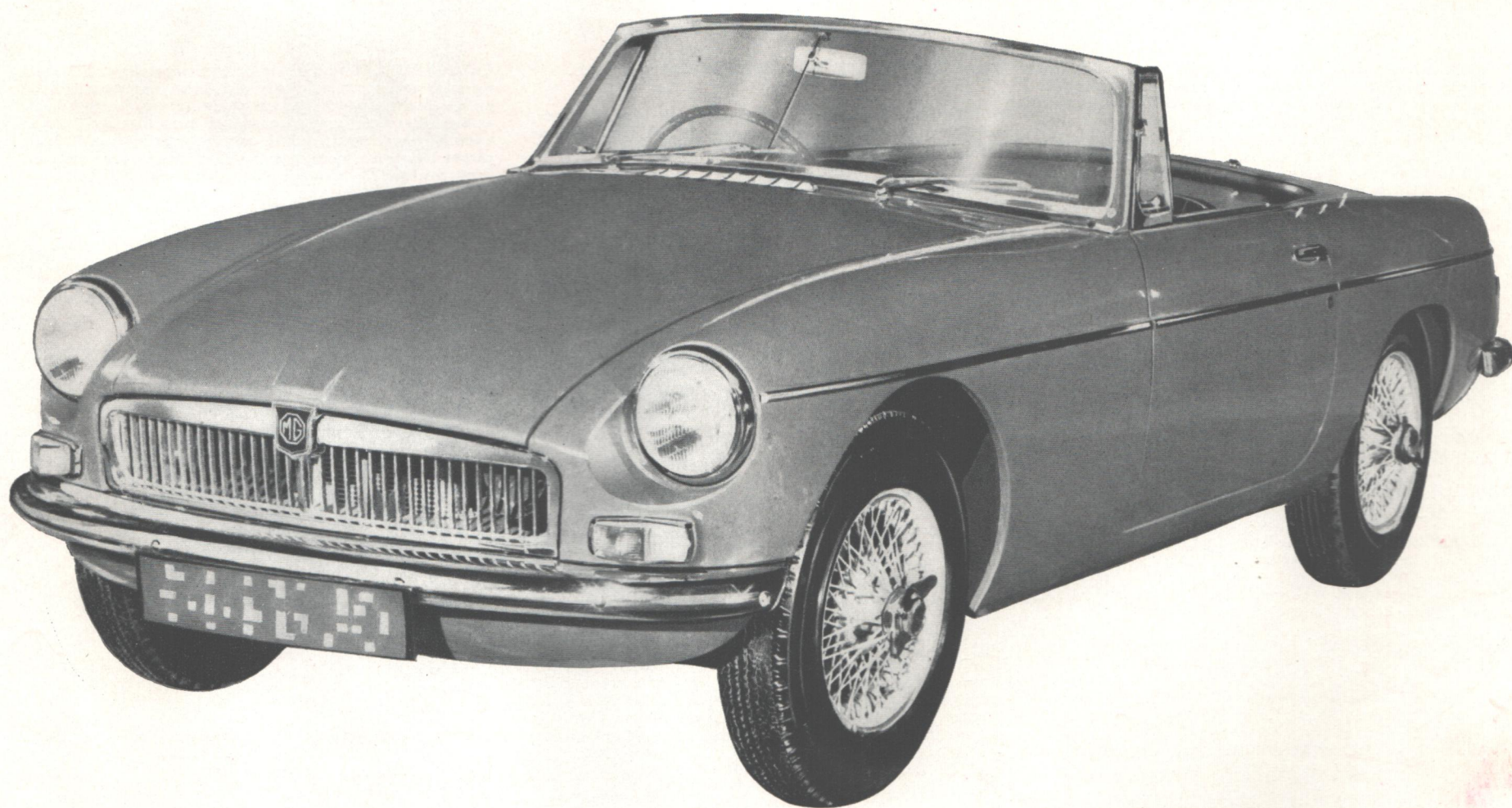
* 49¼ in. (125-09 cm.) with wire wheels.



SERIES MGB



The canvas hood, when erected, blends neatly with the clean, smooth lines of the 'MGB'. Two types of hood are available: the pack-away, which can be removed completely for stowage in the boot, and the attached hood, which folds into the occasional seat area. The occasional seat can be used at all times with the pack-away hood, but with the attached hood it can only be used when the hood is erected.



The bonnet lid is of aluminium for lightness, while the windshield frame is of polished aluminium to avoid rust. Wrap-round bumpers with over-riders front and rear (optional on front for Home market), double-dip, sealed-beam headlamps, a heater air intake on the bonnet top clear of exhaust fumes, and a rear-view mirror adjustable for height are examples of some of the many worthwhile features of the 'MGB'. A wide range of optional extras is offered, including the wire-spoke wheels illustrated.

SPECIFICATION

ENGINE: Four cylinder-o.h.v. operated by push-rods from 3-bearing camshaft with roller-chain drive and automatic chain tensioner. Three-bearing, counter-balanced crankshaft with renewable bearing liners. Solid-skirt, aluminium-alloy pistons with 1 scraper and 3 compression rings. Connecting rods with renewable, steel-backed, lead-indium bearings. Bore 3.16 in. (80.26 mm.). Stroke 3.5 in. (88.9 mm.). Capacity 1798 c.c. (109.6 cu. in.). High-compression engine develops 94 b.h.p. at 5,500 r.p.m. (Std.) Compression ratios 8.75:1 (Home market); 8.20:1 or 8.75:1 according to Export market. Maximum torque 107 lb. ft. at 3,500 r.p.m.

Fuel System: Twin S.U. semi-downdraught carburettors fed from rear-mounted S.U. H.P.-type electric fuel pump. Air cleaner fitted to each carburettor. Tank capacity 10 gallons (12 U.S. gallons, 45.4 litres).

Lubrication System: Full-flow external oil filter with renewable element. Oil cooler standard for Export markets (optional for Home).

Ignition System: Oil-filled coil. Automatic advance and retard with centrifugal and vacuum control.

Cooling System: Pressurized radiator with impeller pump and fan. Circulation thermostatically controlled.

TRANSMISSION: Clutch: Borg & Beck single-plate dry clutch with hydraulic actuation.

Gearbox: Four-speed with synchromesh on second, third, and top gears. Central remote-control gear change.

Propeller Shaft: Hardy Spicer, with needle-bearing universal joints.

Rear Axle: Three-quarter-floating with hypoid final reduction gears. Axle ratio 3.909:1.

Overall Gear Ratios: First 14.214, second 8.655, third 5.369, top 3.909, and reverse 18.588:1.

Road Speed at 1,000 r.p.m. in Top Gear: 17.9 m.p.h.

STEERING: Direct rack and pinion with large-diameter, spring-spoke, clear-view steering-wheel, 2.93 turns lock to lock. Left-hand or right-hand steering according to market.

SUSPENSION: Front: Independent by coil springs and wishbone-type links controlled by hydraulic dampers. **Rear:** Semi-elliptic springs controlled by hydraulic dampers.

BRAKES: Lockheed hydraulic system employing discs at front and drums at rear. Front disc diameter 10 $\frac{3}{4}$ in. (27.3 cm.). Rear drum diameter 10 in. (25.4 cm.). Cable-operated, centrally positioned hand brake lever actuating brakes on rear brake-shoes.

ROAD WHEELS: 4J x 14 well-base disc-type wheels with 4-stud fixing fitted with 5.60—14 nylon tyres with tubes.

ELECTRICAL: Twin 6-volt batteries mounted in balanced position behind the seats; suppressor equipment; belt-driven dynamo; compensated voltage control; single-pole, positive-earth wiring system; dash-controlled ignition and starter switch; self-parking, twin-blade windshield wipers; stop/tail lamps incorporating flashers and reflectors; double-dipping headlamps with sealed-beam units; foot-operated dip switch; sidelamps integral with flashers.

INSTRUMENTS: Large speedometer with dead-beat reading; headlamp high-beam warning lamp; large revolution indicator with ignition warning lamp; oil pressure, fuel and water temperature gauges; flasher warning indicator lamps on fascia panel; map-reading lamp switch; windshield wiper switch; mixture control; lighting switch; starter/ignition combined switch; panel lamp switch with rheostat; direction indicator switch on steering-column; windshield washer operating control; horn-button in steering-wheel centre.

COACHWORK: Two-door 2-seater sports car of all-steel mono-construction; cold air ventilation to cockpit from grille in front of windshield away from exhaust fumes; adjustable bucket-type seats; occasional rear seating; leather upholstery with leathercloth on non-wearing parts; fitted carpet over gearbox tunnel; P.V.C.-coated rubber mats on floor; one-piece bonnet hinged at rear; enclosed luggage boot with locking lid; curved laminated safety-glass windshield; fully winding door windows with hinged quarter-lights; windshield washer; folding waterproof hood with large rear transparent panel; wide rear-opening doors fitted with outside handles and locks; driving-mirror adjustable for height; spare wheel, tools, and jack housed in luggage boot; bayonet-fixing-type petrol filler cap; rear over-riders; provision for fitting radio, seat belts, and fresh-air-type heater.

EXPORT SPECIFICATION: Oil cooler; front and rear over-riders; m.p.h. or km.p.h. speedometer according to market; headlighting according to market; twin horns.

OPTIONAL EQUIPMENT: Oil cooler (Home market); car radio; heater and demister; Road Speed tyres; Whitewall tyres; wire wheels; twin horns; wing mirror; fog lamp; tonneau cover; anti-roll bar; headlamp flasher and switch; folding hood; luggage carrier; ashtray; front over-riders (Home market); rear compartment cushions.

COLOURS:

Exterior colour	Interior trim colour	Hood
Tartan Red	Black	Red
Tartan Red	Red	Red
Old English White	Black	Grey
Old English White	Red	Grey
Chelsea Grey	Red	Grey
Iris Blue	Black	Blue
Iris Blue	Blue	Blue
Black	Red	Grey
Black	Black	Grey

Wheels: Silver. **Fascia and windshield shroud panel:** Black. (Colours are those available at time of publication. For current availability see separate colour card.)

The issue of this publication does not constitute an offer, and the right is reserved to alter prices and/or specifications at any time without notice. Sales are made subject to and with the benefit of The M.G. Car Company Limited or Nuffield Exports Limited Conditions of Sale and Warranty, copies of which are available from Distributors and Dealers. For prices see separate list.

THE M.G. CAR COMPANY LIMITED

Proprietors: MORRIS MOTORS LIMITED

OVERSEAS BUSINESS

NUFFIELD EXPORTS LIMITED

Proprietors: MORRIS MOTORS LIMITED

COWLEY, OXFORD, ENGLAND

