

# The Golf.



1975

# The Golf.

This brochure is intended to show the general appearance of the VW Golf. Many of the illustrations show equipment which is not to U.K. specifications, or is only available on special order.

Please refer to the back four pages of the brochure for exact details of the Golf.

Due to a continuous process of modification by the Manufacturer some changes in specification may occur after the publication of this brochure.

Kindly refer to the back page for up to date amendments to specifications and please confirm these with your authorised Volkswagen Dealer before ordering.

All the power output and fuel consumption figures shown in this brochure are to the DIN standard. A specification of the fuel consumption standard is given on page 25 of this brochure.

# See it.

The Golf is a stylish new car that brings family motoring down in size. Small as it is on the outside, it's a full four seater on the inside. With a practical rear tailgate that'll handle loads of things.

# Drive it.

The Golf is easy to handle and fun to drive. It has a lively water-cooled engine, a front wheel drive layout and an advanced suspension system.

# Choose it.

The choice is yours. Choose from the 3 or 5 door versions with the 1100 50 bhp (DIN) engine, or take the more powerful 5 door saloon with a 1500 70 bhp (DIN) engine. Choose either standard or luxurious trim.

# Own it.

With the help of your local VW dealer. He'll arrange finance for you, should you require it, through Volkswagen Finance. He'll provide insurance through VW's own insurance service, VIS. And he'll keep your Golf running smoothly with the VW Diagnosis System.

# Love it.

The Golf has a lot of endearing features. It's economical. And it requires precious little attention. 10,000 miles between full services. Minor lubrication at 5,000 miles. Last but not least it's a Volkswagen, so it's good and reliable.

# Buy it.

A car that makes sense. Sound financial sense. Sound family sense. Sound traffic sense. And sound environmental sense.

This catalogue will help you make your choice.



## See the new Golf –

At Volkswagen we've been thinking small for almost thirty years. So, you would expect any new small car we build to be something rather special. The Golf won't disappoint you. Take a look at its low, sloping bonnet and its racy, cut off tail. The Golf is sporty but elegant. And it's a Volkswagen, so its good looks are built to last. For years and years.

We may be perfectionists, but we're realists too. Look at today's crowded city streets, and busy main roads. And look at the price of petrol. There's a real need for a more practical car. One that's small enough outside for city use. But big enough inside for touring with the family. A car that makes full



## it's beautifully practical.

use of the roadspace and petrol it uses. In short, a car like the Golf.

The Golf is practical from bumper to bumper. It has a space saving transverse engine layout at the front. And a wide opening tailgate at the back.

The Golf's available as a 3 or 5 door saloon, in

standard or luxurious L trim, with the 1100 cc engine. If you want more power you may choose the 5 door 1500 cc version with either the standard or luxury trim.

Whichever Golf Model you finally go for, you'll find it has a lot going for it.



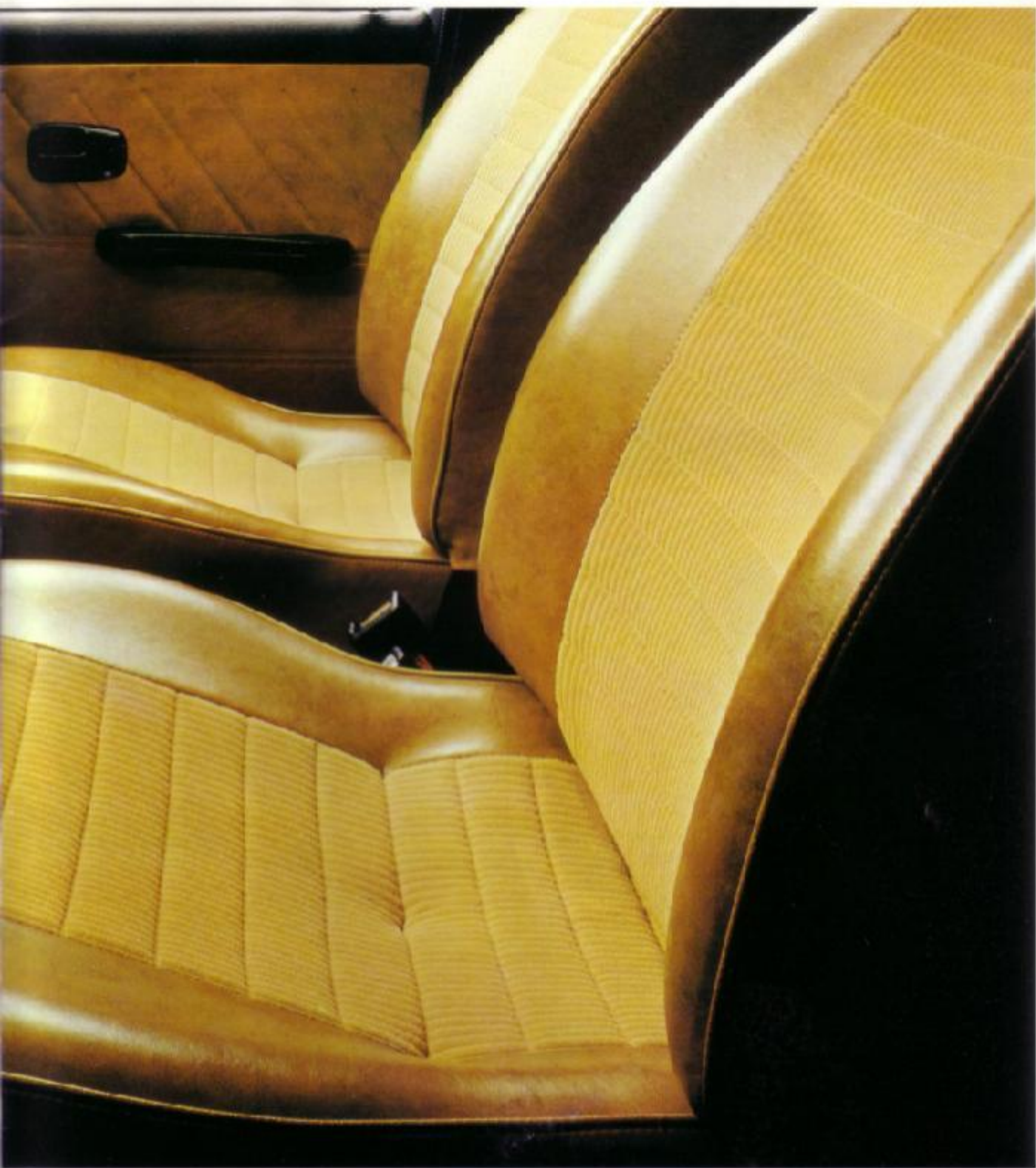
## See the Golf — and

The Golf may be compact outside, but it's spacious inside. We haven't wasted an inch. In a car that's just 5'4" wide and 12'2" long, we've built in comfortable accommodation for four.

A transverse engine layout means less room for components and more room for occupants. Here's

how much; the passenger compartment measures a full 6'7", from the driver's pedals to the rear passengers' backrest.

Shoulder to shoulder, it's 4'4" wide. And there's over 3'0" of headroom. There's plenty of room for back seat drivers too. Over 3'3" of it. Even with the



## discover space.

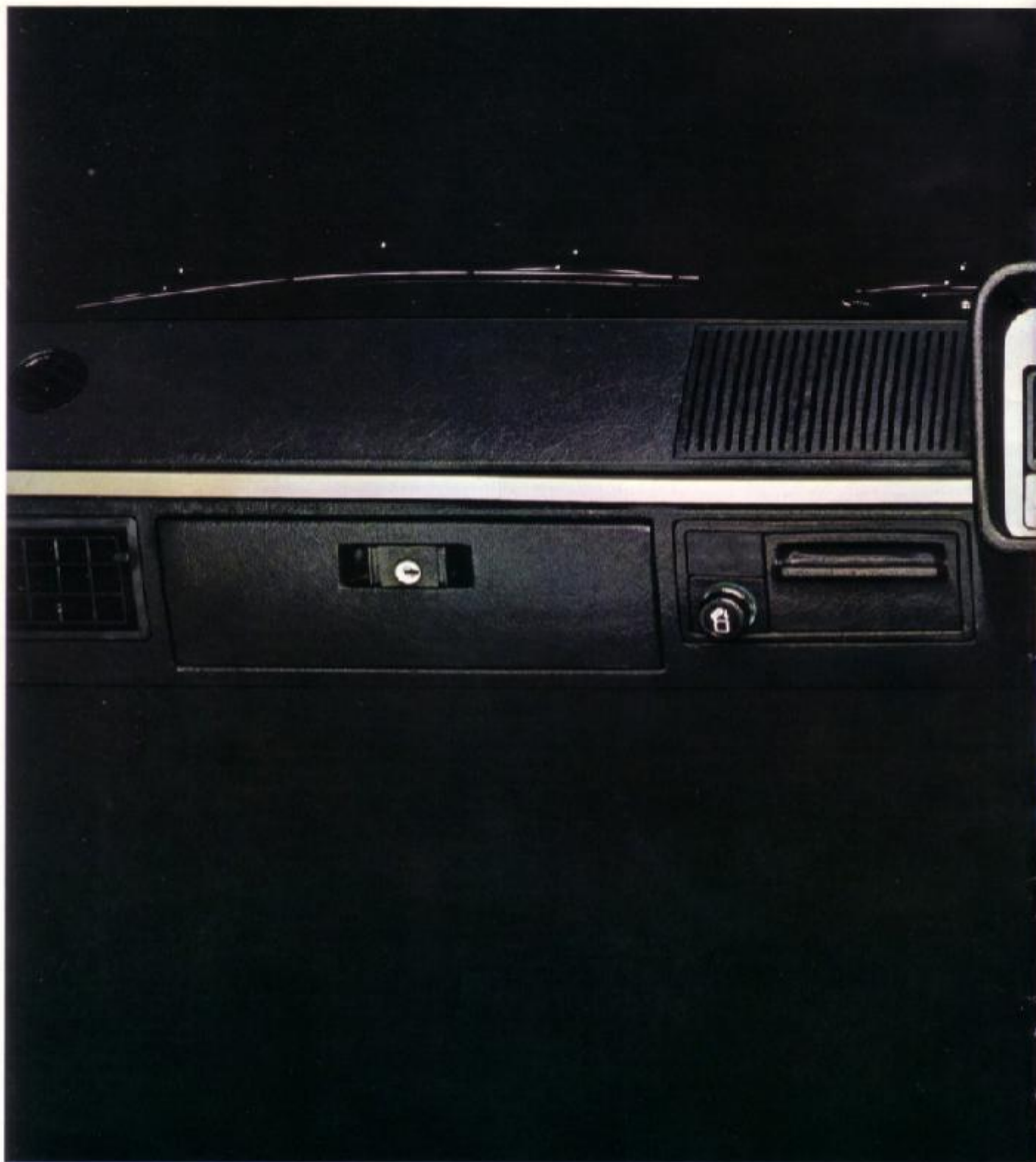
front seats half way back.

But, it's not just the space inside the Golf that's a comfort.

We realise no two people are quite the same shape. So our front seats adjust and adjust. For leg length and backrest angle. All the seating is

anatomically designed. With raised side panels that help to support you in even the sharpest bends.

There's a choice of lava black or nut brown cloth upholstery, and wall-to-wall carpeting is included on the L and LS models as standard equipment.



## See the Golf — and feel

Whether you've been driving three months or three years, you'll quickly get used to the Golf. It's the sort of car that makes you feel at ease. Everything is well designed and well laid out. The instruments and warning lights are easy to read and well within the driver's field of vision. All the safety-first switches are clearly marked and easy to

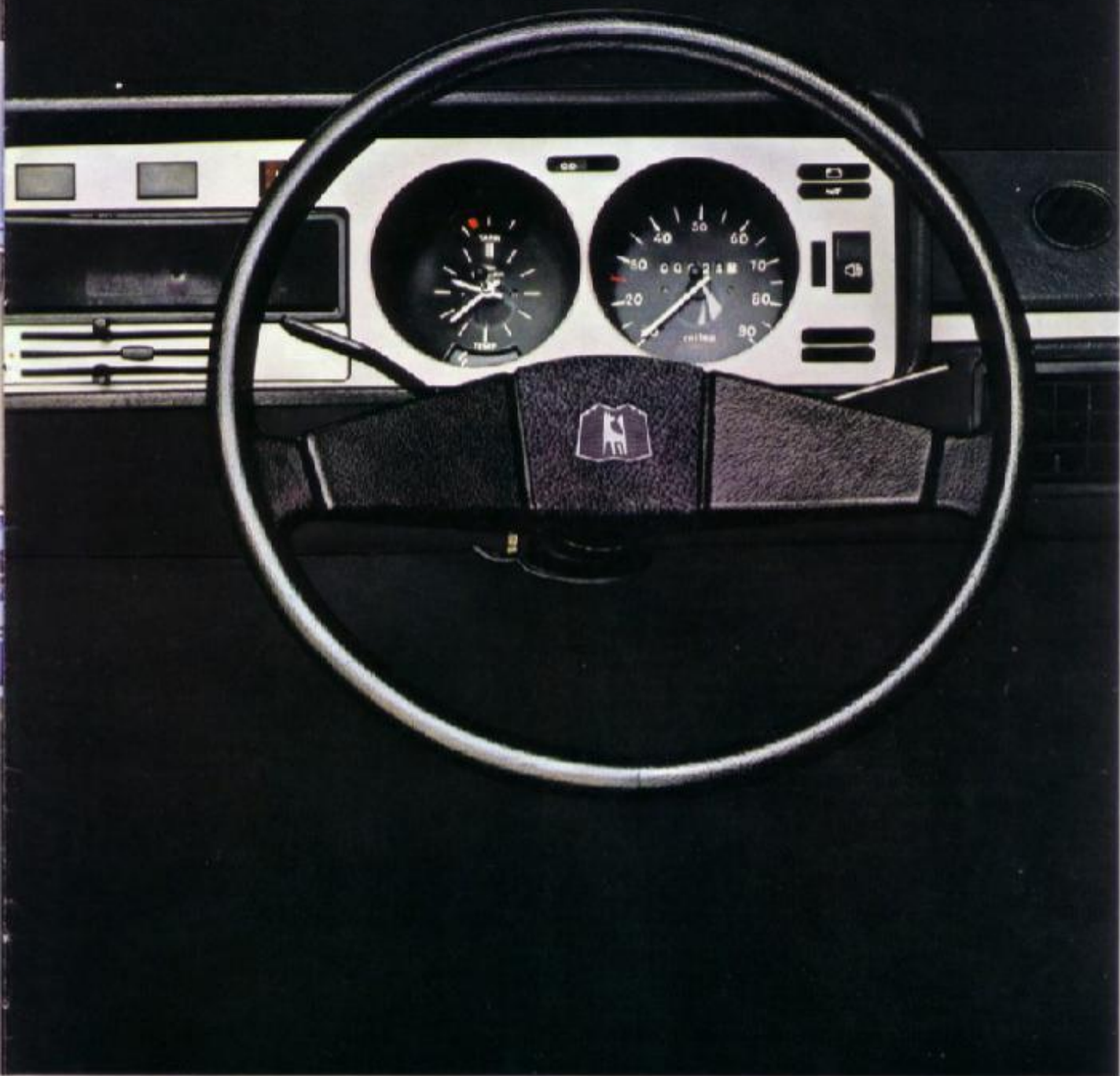
operate. Even at night.

The dashboard's good to look at too. It has a grained finish and is made from an anti-dazzle material.

Even in standard trim the Golf is luxurious. You get padded sun visors, coat hooks and a glove box.

The instrument panel incorporates a full range of





## at home behind the wheel.

warning lights. And the steering column incorporates two stalk controls. One for the indicators and headlamps.

And the other for the two speed wipers and the screen washers.

Last but not least there's an efficient heating and

ventilation system, that'll blow hot and cold at the flick of a switch.

The Golf L model shown above gives you even more. An electric clock, a cigarette lighter and a lockable glove box. Wall-to-wall carpeting. And many other features.



## Drive the Golf — it's

A lot of things help a car handle well on the open road. Independent suspension is one. Front wheel drive is another.

The Golf has both. It'll take the roughest roads and the tightest bends in its stride. A third helpful feature is its shape. The Golf's clean lines aren't just for appearance sake.

What they don't owe to our designers, they owe to our wind tunnel. The Golf flies through the air with the greatest of ease. So you'll keep stable and

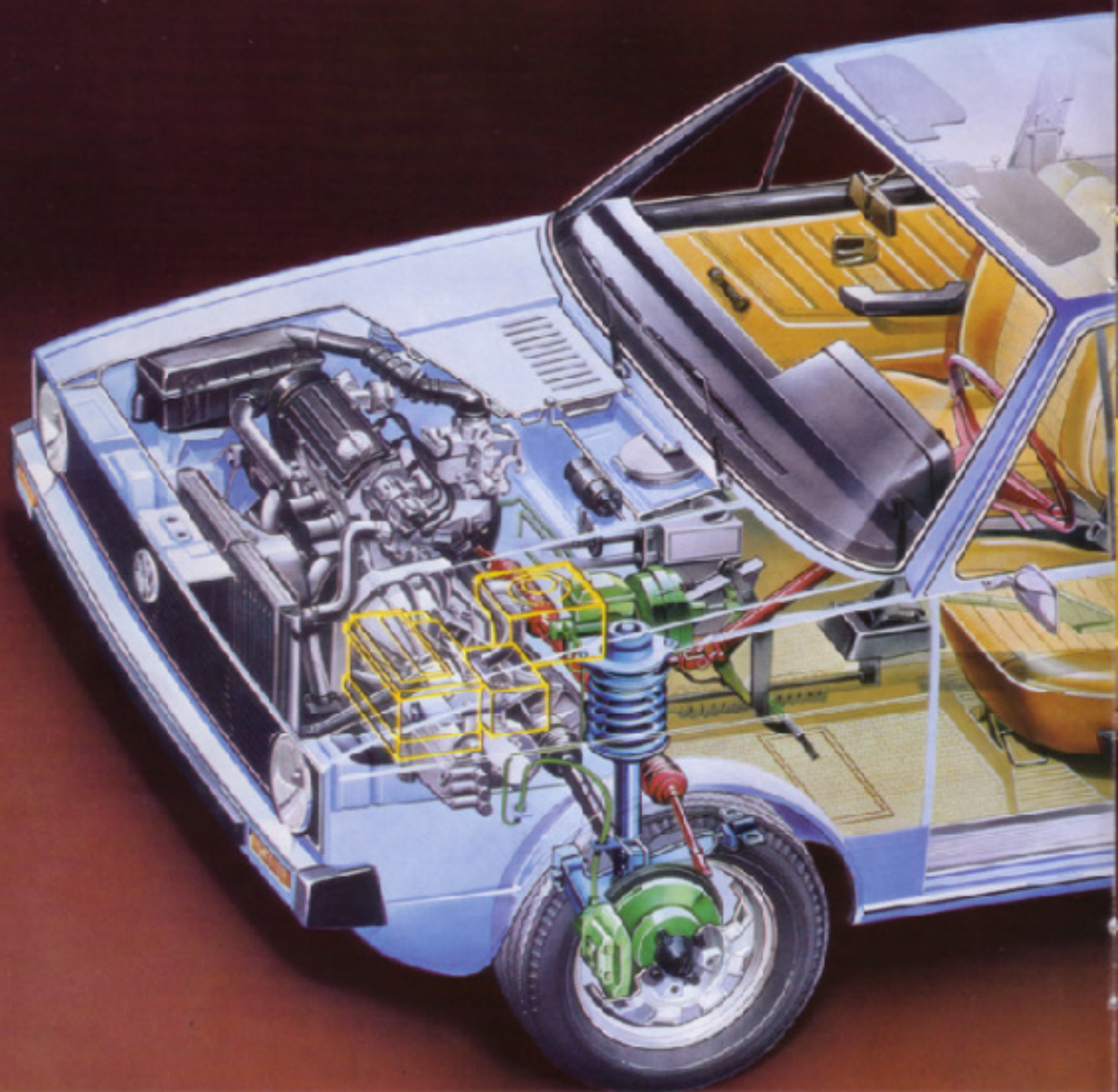


## easy to handle.

on course in even the stiffest cross-winds. The Golf is good around town too. The large glass areas help you see what's going on all around.

And when it comes to parking, you haven't any body overhangs to worry about. The Golf's wide track and long wheelbase see to that.

Its compact size means you can make use of spaces that other cars can't. And it's 34 ft. turning circle helps you get into them.



## Drive the Golf — advanced

The Golf incorporates many of the technical features that have proved successful in our Passat and Scirocco models. So, although they're advanced, they're tried and tested from the word go. And if you do have any trouble it's no problem. Parts and expert advice are already at hand. The engine is an efficient four cylinder, water cooled unit. With a five bearing

crank-shaft and a belt driven overhead camshaft.

It's smooth, quiet and economical. The engine is mounted transversely between the front wheels. Which it drives through a four speed all-synchromesh gearbox.

There's independent suspension all round. With a self-stabilising arm rear axle and T section axle beam. They help keep the rear wheels just where they belong.



## engineering with a good track record.

On the road. At the front there's a suspension strut axle, that incorporates a unique stabilised steering/braking system.

It helps keep the car under control even when irregular braking or bad road conditions affect the front wheels unevenly. There are diagonal dual circuit brakes that will combine with the stabilised steering to

keep you in line if a circuit fails. The bigger engined Golf has a servo-assisted braking system. The Golf's body is a safety feature too. The passenger compartment is a rigid safety cell with impact absorbing crumple zones at the front and the rear.



## Choose the Golf-3 or 5 doors and

Even after you've decided to buy a Golf there are decisions to be made. We make it with three or five doors. And a choice of two engines. The standard 1100 power unit delivers 50 bhp (DIN). It pulls the Golf from 0-50 mph in 10.6 seconds and gives a top speed of 87 mph.

For those who want more in the way of performance there's the Golf S. Its 1500 engine develops 70 bhp (DIN), gives a 0-50 mph time of 8.2 secs and a top speed of 99 mph.



## 50bhp, 5 doors and 70bhp.

Although both engines are quick off the mark, they're slow through the petrol. The 1100 50 bhp model will return around 35 mpg (DIN). And the 1500 70 bhp model gives a touring consumption of 33 mpg (DIN).

The Golf's high performance engines are smooth, quiet and economical. What's more, they're built to last. So you can expect this new Volkswagen to last just as long as the old ones.



## Choose the Golf — with

The Golf's a pretty individual car. That's why we've made a wide range of models available. You can pick one to suit yourself. In addition to the choice of doors and engines, there's a choice of trim. A standard model and a luxurious L model, for both the 1100 and 1500 versions.

Not that the standard model is in any way basic.

It has a whole bunch of extras. Two speed wipers for instance. Plus a door mounted driving mirror, sculptured steel sports wheels, adjustable front seats, emergency four-way flashers, and a luggage compartment cover to keep valuable belongings out of sight. What's more, there's no extra charge for a heated





## luxury or more luxury.

rear window on the four door model.

The Golf L model has even more. Wall-to-wall carpeting, a cigarette lighter, reclining seats, a lockable glove box and an electric clock. There's even a pneumatic retention mechanism for that opening rear tailgate. Yet another little extra which helps to make

the Golf L just that little bit more luxurious.

For the full story take a look at the specification pages at the back of this brochure. Whichever Golf you end up choosing, you'll get a great deal.

\*Please note: The reversing lights illustrated above are not available on Golf Models in the U.K.



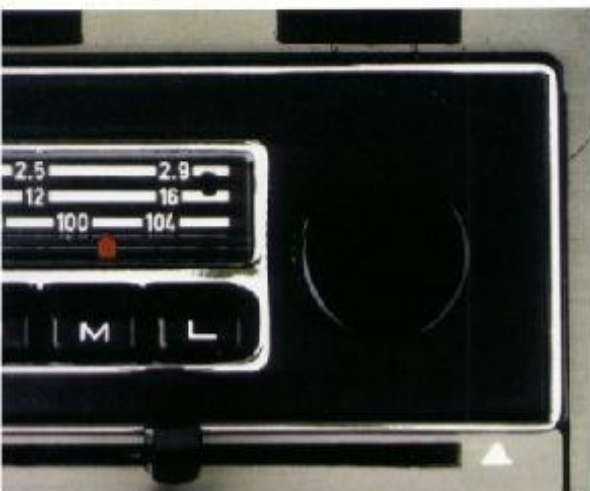
## Choose the Golf —

Although we build a lot into each and every Golf model, there are still a few things you can add.

Like racy Alloy Sports Wheels with extra wide radial tyres.

For winter driving there is a heated rear window, which is standard on all models apart from the 2 door 1100.

For summer driving there is a sliding steel sunroof. And to help you relax a little behind the wheel,



## with a few little extras.

there's the option of automatic transmission on the S and LS models.

On top of all this extra equipment there's a wide range of accessories available from your VW dealer. You'll find he can offer items such as radios, reversing lights, inertia reel seat belts, fog and spot lamps and mud flaps, and many more.

Add them to your Golf and they'll add to its attraction.



## Own the Golf — the rear

If you want a good looking saloon but need a practical estate, the Golf is just the car for you.

It's ideal for the growing family and growing business. Because all the time it's a delivery van, it's a family car. And vice versa. Take a look at the Golf's rear tailgate. It's a wide upswinging door that handles all but the biggest boxes and parcels easily. And inside there's a 12.4 cu.ft. boot. Until you put the rear seat down. Then it doubles to 24.7 cu.ft.



## door is a big advantage.

Not bad, considering that we're only considering the space up to the bottom of the rear window. If you're serious about carrying things, fit a driving mirror to the passenger door and stack the Golf up to the ceiling. There's 35 cu.ft. available between the boot floor and the roof.

Isn't that a big advantage.

Please note: The reversing lights illustrated above are not available on Golf Models in the U.K.



## Own the Golf – and have all the

Owning a Volkswagen has always been something special.

### **Volkswagen Quality.**

A great deal of craftsmanship goes into each and every VW. That's what makes it reliable, economical, inexpensive to maintain and gives it a high resale value.

### **Volkswagen Service.**

VW has one of the biggest and best service networks in Europe. This means reasonable prices for all genuine VW parts. A wide range of exchange units. Low repair times, which help keep costs down, and efficient maintenance. On top of that, there's the unique VW



## advantages of a Volkswagen.

Diagnosis system. It's installed in most VW dealerships, ready and waiting any time you need it.

### Volkswagen Insurance.

Not only does VW supply cars, it supplies the insurance for them too. On reasonable terms and without much formality through VW's own insurance

service (VIS) — insurance that's as reliable as the Volkswagen itself.

### Volkswagen Finance.

To round it all off, your VW dealer can even arrange finance for you through Volkswagen Finance.



## Love the Golf — it has a

The Golf is as versatile as it is attractive. Because it's comfortable and handles well, it's fun to drive and fun to be driven in. Because it has been designed for tomorrow's roads, it's compact and economical.

Because it's a Volkswagen, it's reliable and requires precious little attention. Remarkably it only needs a full service every 10,000 miles. For many people that's only once a year or for the serious traveller that's





## lot of endearing qualities.

London to Moscow and back three times.

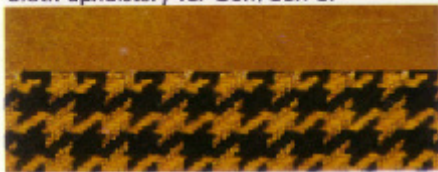
The longer you keep your Golf, the more you'll love owning it.

Even selling it will be pleasant because a VW tends to return a fair amount of the price you paid for it.

Please note: The reversing lights illustrated above are not available on Golf Models in the U.K.

# Buy the Golf – pick the

## Cloth upholstery for Golf/Golf S.



(not available in the U.K.)



nutbrown

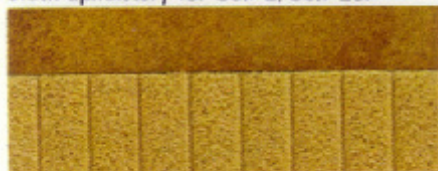


(not available in the U.K.)



lava black -29

## Cloth upholstery for Golf L/Golf LS.



(not available in the U.K.)



(not available in the U.K.)



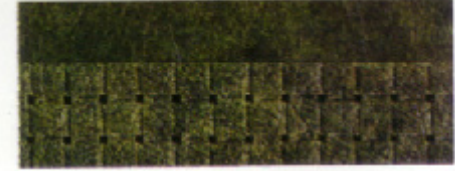
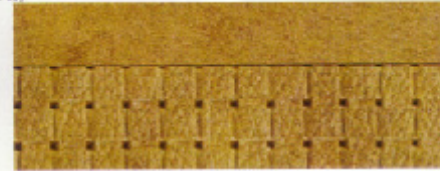
nutbrown

-82



lava black -84

## Leatherette upholstery (not available in the U.K.)



Print processes do not allow exact reproduction of colours. This applies to the exterior colours as well as to the upholstery.

# Buy the Golf – choose the

## Technical Specifications

### Engine:

Four cylinder in line with 1.1 or 1.5 litre capacity, transversely mounted in front, 1100cc unit inclined forward, 1500cc inclined backwards. Single overhead camshaft with toothed belt drive. Water cooling with thermostatically controlled fan. Downdraught carburettor with automatic choke.

	Golf/Golf L	Golf S/Golf LS
Capacity:	1093cc	1471cc
Bore and Stroke:	69.5 x 72mm	76.5 x 80mm
Compression ratio:	8.0: 1	8.2: 1
Max. Output (DIN):	50bhp at 6000 rpm *37kw at 6000 rpm	70bhp at 5800 rpm 51kw at 5800 rpm
Max. Torque (DIN):	54.5 lbs.ft. at 3000 rpm *79Nm at 3000 rpm	79.8 lbs.ft. at 3000 rpm 114Nm at 3000 rpm
Battery:	12 volt 27 amp.hr. Charged by 35 amp alternator	12 volt 36 amp.hr. Charged by 35 amp alternator

\*New International Units for technical measurements:

	Old Unit	New Unit	Ratio
Output	bhp	kw (kilo watt)	1 bhp = 0.746kw
Torque	lb.ft.	Nm (Newton meter)	1 lb.ft. = 1.36Nm

### Transmission:

Gearbox, differential and double jointed drive shafts all combined in a compact transversely-mounted front drive unit.

Manual: Gearbox: All synchromesh four speed gearbox mounted transversely.

Clutch: Dry single plate clutch.

Overall ratios: with 1100cc engine: 1st 3.45, 2nd 2.05, 3rd 1.35, 4th 0.96, Rev 3.38

with 1500cc engine: 1st 3.45, 2nd 1.94, 3rd 1.37, 4th 0.97, Rev 3.17

Final drive ratio: with 1100cc engine: 4.57  
with 1500cc engine: 3.9

Automatic: Three stage automatic gearbox with three driving ranges and reverse available as an optional extra on Golf S and LS Models.

### Suspension:

Front: Independent suspension with struts, lower wishbone and telescopic shock absorbers.

Rear: Independent suspension with torsion beam trailing arm axle and telescopic shock absorbers.

### Steering:

Maintenance – free self adjusting rack and pinion steering. Incorporating negative roll radius.

Turning circle: 34.4 ft.

### Brakes:

Diagonal dual circuit system on all models with brake servo assistance on the S and LS.

Front brakes: 9.4 ins. diameter discs. Rear brakes: 7.1 ins. diameter drums.

### Tyres:

Crossply: 155 – 13 on 5J rims on Golf/Golf L

Radial ply: 155 SR 13 on 5J rims on Golf S/Golf LS

### Performance:

	Golf/Golf L	Golf S/Golf LS
Top speed:	87 mph	99 mph (97 mph)
Acceleration (secs)		
0 – 50 mph	10.5	8.2 (9.7)
0 – 60 mph	16.5	12.5 (14.0)
Fuel consumption (DIN)*	35.2 mpg	33.2mpg (31.3mpg)
Under good conditions:		
At a steady 50 mph	51.3mpg	47.8mpg (44.1mpg)
60 mph	41.5mpg	40.2mpg (37.6mpg)

(Figures quoted in parantheses apply to automatic transmission available on 1500cc models only)

\*DIN STANDARD – with half permissible load at ¾ max. speed plus 10% (but not above 70 mph)

### Weights: (lbs/kg)

	Golf/Golf L	Golf S/Golf LS	(Automatic)
Kerb weight:	2 door 1654/750	–	–
4 door 1709/775	1775/805	(1830/830)	
Max. payload:	2 door 948/430	–	–
4 door 893/405	893/405	(882/400)	
Max gross weight:	2602/1180	2668/1210	(2712/1230)
Permissible axle loads:			
Front:	2 door 1345/610	–	–
4 door 1345/610	1411/640	1455/660	
Rear:	2 door 1301/590	–	–
4 door 1301/590	1301/590	1301/590	

### Capacities:

	Golf/Golf L	Golf S/Golf LS
Max. Towing capacities (lbs/kg)		
Trailer braked:	1764/800	2205/1000
Trailer unbraked:	882/400	882/400
Fuel tank:	9.9 gallons/45 litres	
Engine oil:	5.5 pints on 1093cc, 6 pints on 1471cc	
Manual gearbox:	2.2 pints	
Luggage capacity:	With back rest up: 12.4 cu.ft.	
With back rest down and luggage to the roof:	24.7 cu.ft.	35.1 cu.ft.

### Dimensions: (inches)

External:

Length: 146, Width: 63.4, Height: 55.5, Wheelbase: 94.5, Track front/rear: 54.7/53.1, Minimum ground clearance at permissible total weight: 5.3

Internal:

Front seat depth/back height: 19.5/22.0, Headroom: front seat/roof: 37.4, rear seat/roof: 35.4, Rear seat width/back height: 46.0/18.0, Width at shoulder height front/back: 51.4/51.0, Rear seat legroom: 39.4

# model that suits you best.

## Options and Equipment.

### Safety Features:

All steel body with "safety cell" passenger compartment. Impact absorbing front and rear crumple zones.  
 Safety steering wheel.  
 Collapsible steering column.  
 Stabilised steering/braking system incorporating negative roll radius.  
 Diagonal dual circuit braking system.  
 Brake servo assistance on 1500cc models.  
 Child safety locks on rear doors.  
 Hazard warning lights.  
 Breakaway safety rear view mirror.  
 Padded instrument panel.  
 Good all round visibility.

### Equipment:

The following information provides details on the equipment supplied as standard on the models shown. Please note however that this specification may be subject to change without prior notice. It is therefore recommended that you check with your VW Dealer at the time of ordering, regarding changes that have taken place.

	Golf/Golf S	Golf L/Golf LS
Underbody protection	x	x
Opening tailgate	x	x
Driver's door mirror	x	x
Rear wheel arch stone guards	x	x
Folding rear seat	x	x
Seat belt anchorage points	x	x
Cloth upholstery	x	x
Electric windscreen washers	x	x
Two speed wipers	x	x
Variable heating/ventilation system	x	x
Fresh air vents on fascia	x	x
Defroster duct below windscreen	x	x
Courtesy light	x	x
Headlamp flasher	x	x
Hazard warning lights	x	x
Oil/water/alternator warning lights	x	x
Two padded sun visors	x	x
Two coat hooks	x	x
Luggage compartment cover	x	x
Glove box	x	x
Front disc brakes	x	x
Wide wheel rims	x	x
Dashboard radio aperture	x	x
Dashboard speaker grill	x	x
Dashboard ashtray	x	x
Adjustable front seats	x	x
Reclining front seats		x
Padded matt black fascia	x	
Brushed aluminium fascia		x
Pneumatic tailgate support		x
Polished metal exterior trim		x
Rubber waistline mouldings		x
Full carpeting		x
Padded steering wheel		x
Lockable/illuminated glove box		x

	Golf/Golf S	Golf L/Golf LS
Two speed heater/ventilator blower		x
Passenger vanity mirror		x
Swivel driver's sun visor		x
Rear ashtray		x
Arm rests on all doors		x
Quartz electric clock		x
Temperature gauge		x
Panel rheostat		x
Illuminated heater controls		x
Illuminated switches		x
Trip mileage recorder		x
Cigarette lighter		x
Passenger grab handles		x
Heated rear window	x	x
	(o on 2 door 1100)	
Sliding steel sunroof	o	o
Integrated head restraints	o	o
Alloy sports wheels with steel radial ply tyres 175/70 SR 13	o	o
Steel radial ply tyres 175/70 SR 13	o	o
Automatic transmission (1500cc models only)	o	o

x Standard equipment

o Factory installed optional equipment

### Dealer installed optional extras at extra charge:

Many items of equipment are available on the Golf range and a few are listed below.

Fog and spot lamps, rear fog lamps, reversing lights, complete radio installation, mudflaps, tow bar, sports road wheels, roof rack, door storage trays.

Please consult your VW Dealer for full details on the price and availability of equipment and accessories.

**Ask for a test drive.**