



305
PEUGEOT



Introducing the Peugeot 305.



Taking its place fairly and squarely among the many 1300cc and 1500cc family saloons currently available, comes the newly introduced 305 from Peugeot.

The 305 offers what today's motorist demands from a modern contemporary car. It is a stylish and well-balanced saloon and its sensible design layout enables the maximum possible space to be offered to passengers and their luggage, in the minimum possible overall dimensions. Its performance, comfort and level of equipment are all exceptional, and yet the purchase price and running costs are extremely competitive.

To accommodate the variety of motoring requirements there's a range of 305 models with a choice of engine sizes and trim levels. Whether it's the 1290cc GL and GR

or the 1472cc SR, there's a subtle blend of modern appeal and classic individuality. The 305 is also available with a 1548cc diesel engine enabling you to take advantage of the additional diesel benefits of even longer engine life and greater fuel economy.

All the 305 models are four door saloons, and have front wheel drive transverse engines. The 305 range has been developed following rigorous research and appraisal programmes that have tested, evaluated and re-evaluated every aspect of the cars from the initial design concept to the individual components, and on to the finished products featured here.

Since its launch the Peugeot 305 has enjoyed widespread success and press acclaim. The reason? Why not test drive the Peugeot 305 of your choice and discover for yourself.



GL

1290cc. 65 bhp DIN at 6000 rpm. Maximum speed 92 mph (147 km/h). 4 door saloon. 5 seats.



GR

1290cc. 65 bhp DIN at 6000 rpm. Maximum speed 92 mph (147 km/h). 4 door saloon. 5 seats. Sliding steel sunroof optional.



GRD

1548cc. diesel injected engine. 49 bhp DIN at 5000 rpm. Maximum speed 84 mph (135 km/h). 4 door saloon. 5 seats. Sliding steel sunroof optional.



SR

1472cc. 74 bhp DIN at 6000 rpm. Maximum speed 96 mph (153 km/h). 4 door saloon. 5 seats. Sunroof optional. Custom pack optional on SR with sunroof, includes laminated windscreen, tinted glass, electrically operated front windows, map reading light.







GL The 305 GL proves that style really can be combined with practical, everyday requirements. The stylish lines of this modern family saloon are also aerodynamically efficient resulting in excellent fuel economy.

First class passenger accommodation space is ensured without causing the car to be over-large thanks to the design of the car body and the location of the transverse front wheel drive engine. The all aluminium alloy 1290cc power unit is both strong and flexible offering a really lively performance.

Excellent roadholding and a superbly comfortable ride can be expected from the sophisticated four wheel independent suspension system, and the rack and pinion steering gives precise, predictable cornering. Servo-assisted dual circuit brakes - front discs, rear drums - assure you of safe, sure stopping power.

Remarkable value for money, the 305 GL offers you an impressive list of equipment: reclining front seats with cloth upholstery, carpets throughout, heated rear window, 3-speed heater fan, reversing lights, rear fog lamps and many more standard features make the car truly comprehensively equipped.





GR

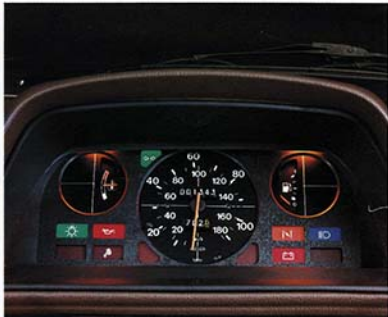
Take a look inside the 305 GR. Deep comfortable orthopaedically designed bucket seats are cloth upholstered. Before you, a pleasingly modern steering wheel and dashboard, padded for safety. The comprehensive bank of instruments is neatly housed behind non-reflective perspex and, at night, is illuminated by a restful orange light making it very easy to read. A panel light rheostat gives you the level of illumination you need at any time.

Ergonomically designed controls are at your fingertips and there are modern self-illuminating push button switches for the heated rear window, rear fog lamps and hazard warning lights. And a sliding steel sunroof is available on the GR as an option enabling you to enjoy those warm summer days to the full.





GR



GR

Every detail of the 305 is pleasing to the eye. The interior fittings of the passenger cabin have all been designed and co-ordinated to give a functional yet smart appearance; the neatly recessed door catches and sculptured armrests for example. A relaxed, pleasant environment has been created to enable you and four passengers to travel in comfort and style.

The practicalities of motoring haven't been neglected, however. Reclining front seats enable you to obtain the best possible driving position. The gear lever is positioned to give you easy, relaxed gear changes and storage space is in abundance. There's a lockable glove box, twin parcel shelves under the dashboard and map pockets on the back of the front seats.



The newest model to join the 305 line-up is the diesel powered GRD.

Featuring the all new light aluminium alloy 1548cc diesel engine, the GRD offers outstanding fuel economy for a car of its size - up to 53.3 mpg at a constant 56 mph.*

The engine is mounted transversely and employs an aluminium alloy block and head with wet cylinder liners for durability and ease of maintenance and an overhead camshaft for greater engine efficiency. Advanced design has created an engine which is smooth and flexible, giving

the GRD a top speed of 84 mph (135 km/h).

The GRD gives you the best of both worlds - all the style and comfort of the 305 with all the durability and economy of a diesel engine. It is also a very clean burning engine, benefiting us all environmentally by reducing the level of air-polluting toxic emissions.

While diesel is new to the 305, it's not new to Peugeot. We have over 50 years of experience with this fuel and have built well over a million diesel engines.

*Figures achieved in accordance with official French Government testing procedures - see chart at the back of this brochure.

GRD







SR





SR

The SR is the high-performer of the 305 range. The 1472cc engine is not only powerful, but extremely economical too. Developing 74 bhp DIN at 6000 rpm and giving a maximum speed of 96 mph (153 km/h), the SR still returns 45.5 mpg at a constant 56 mph (6.2L/100km)*

Inside there's extra equipment and comfort too. Adjustable head restraints are built into the front bucket seats which are cloth covered and fully reclinable. And in the rear seat there's a fold-down central armrest. Dashboard equipment includes a rev counter, and outside, special wheels and black side protector strips give the SR that distinctive sporty flair it deserves.

As an option, the SR may be ordered with a factory-fitted Custom Pack**, which includes tinted glass all round, laminated windscreen, electrically operated front windows and map reading light.



*In accordance with official Government testing procedures.
For full statistics, see chart at the back of this brochure.

**Available on 305 SR when ordered with sunroof.



305 SR Custom Pack

To give added distinction to your car, a special Custom Pack is available on the 305 SR with sunroof.

This comprises:

- Electrically operated front windows
- Tinted glass
- Laminated windscreen
- Map reading light

The 305 – economical to run and maintain.

Economical to run:

Advanced mechanical design, and in particular the aluminium alloy engine, means that there is better heat dispersion; it also means less, and more evenly distributed weight throughout the car, which in turn helps reduce fuel consumption. Other factors assisting the excellent fuel economy are the aerodynamic styling and low drag coefficient.

Economical to maintain:

Engine tuning has been simplified with the inclusion of a built-in diagnostic test socket on petrol models. Even the most reliable cars occasionally develop problems, but if a fault should arise it can be rapidly isolated and corrected – saving both time and labour costs. Full services on petrol models are only required once every 10,000 miles (15,000 km) or every 12 months, with an intermediate check and oil change at 5,000 miles (7,500 km) or six months.

Fuel Consumption

(in accordance with official Government testing procedures)

	GL-GR	GRD*	SR
At a constant 56 mph (90 km/h)	43.4 mpg (6.5L/100km)	53.3 mpg (5.3L/100km)	45.5 mpg (6.2L/100km)
At a constant 75 mph (120 km/h)	31.0 mpg (9.1L/100km)	36.7 mpg (7.7L/100km)	33.6 mpg (8.4L/100km)
Simulated urban driving	29.7 mpg (9.5L/100km)	40.3 mpg (7.0L/100km)	31.7 mpg (8.9L/100km)

*Diesel consumption figures in accordance with French Government testing procedures



A high level of safety

The 305 has been designed with special attention to safety. It incorporates numerous active and passive features which are derived directly from the Peugeot Safety Synthesis Vehicle (illustrated right). The result is a car which is not only modern, stylish and built to an advanced level of engineering, but one which utilises the most up-to-date techniques to ensure that driver and passengers alike can enjoy maximum protection and safety.

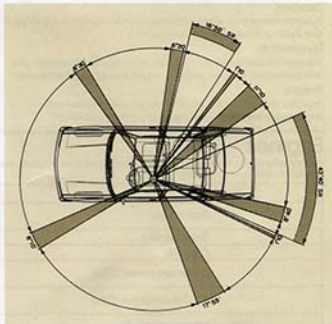
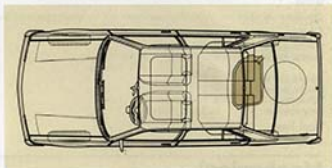
The most important element is the passenger compartment, which must be strong enough to resist a major impact from any angle. This strength comes from the design of the structural components, their material strength and their positioning.

In the 305, a rigid 'cage' has been constructed around the passenger compartment. All possible angles of impact have been considered. In the event of a head-on collision, for example, the reinforced doors are strong enough to retain their shape, despite the massive force that would be exerted upon them. The box sections in front and behind this safety cage (engine compartment and boot) form progressively collapsible zones which absorb impact before it reaches the passenger compartment.

To provide maximum protection to the fuel tank, it is located inside a frame between the rear wheels, preventing a possible fracture and fuel spillage in the event of impact from the rear. And the exhaust pipe is separated from the fuel tank by the thickness of a structural member to prevent it from causing damage under impact.

Safety has been a prime consideration in the design of every part of the 305. The attention to detail is shown by features such as the fully padded steering wheel and dashboard, the self-illuminating push-button controls and the recessed, anti-bust door locks. The 305's deep windows and excellent visibility all round (295° on the GL, GR and GRD) together with the heated rear screen, help the driver to cope with the worst traffic and weather conditions.

We hope that you will never need to call upon the 305's many safety features. But for peace of mind it is good to know they are there.





305 Specification

Bodywork and general information

Body

One piece steel bodyshell with electrophoretic anti-corrosion treatment. 5 seats.

Dimensions

Overall length:	13' 11" (4.24m)	
Overall width:	GL-GR-GRD	5' 3 1/2" (1.63m)
	SR	5' 4" (1.64m)
Height unladen:	4' 7" (1.40m)	
Height laden:	4' 4" (1.32m)	
Wheelbase:	8' 7" (2.62m)	
Boot volume:	16.3 cu ft (464 dm ³)	

Fuel Tank

Capacity: 9.5 gallons (43L)

Weight

Unladen weight:	GL-GR	18.2 cwt (925 kg)
	GRD	19.2 cwt (975 kg)
	SR	18.5 cwt (940 kg)
Laden weight:	GL-GR	26.4 cwt (1340 kg)
	GRD	27.4 cwt (1390 kg)
	SR	26.7 cwt (1355 kg)

Towing

Maximum towing capacity:	GL-GR-SR	19.7 cwt (1000 kg)
	GRD	16.7 cwt (850 kg)

Mechanical

Gearbox

Synchromesh gearbox with four forward speeds and reverse. Diaphragm type clutch with ball bearing thrust operation.

Suspension

Independent suspension all round with coil springs and Peugeot double-acting telescopic hydraulic shock absorbers. Anti-roll bars front and rear.

Brakes

Front disc brakes, drums at rear. Dual circuit braking system with compensator. Mastervac power assisted braking on GL-GR-SR.

Electrical system

GL-GR-SR models have a 12 volt electrical system with three phase 500W alternator, 750W on GRD.

Tyres

145 SR 14 radial tyres. Spare wheel stowed under boot floor.

Steering

Rack and pinion steering. Overall turning circle 35' 7" (10.84m).

Engines

Four cylinder engine mounted transversely. Front wheel drive. Aluminium alloy cylinder block. Removable wet cylinder liners. Overhead camshaft. 5 bearing crankshaft. Self-disengaging fan.

	GL/GR	GRD	SR
Fuel supply	single choke carburettor	diesel injection	single choke carburettor
Bore x stroke	78 x 67.5	80 x 77	78 x 77
Capacity	1290cc	1548cc	1472cc
Maximum power (DIN)	65 bhp at 6000 rpm	49 bhp at 5000 rpm	74 bhp at 6000 rpm
Maximum torque (DIN)	69.4 ft lb (9.6 mkg) at 3750 rpm	63.0 ft lb (8.7 mkg) at 2500 rpm	85.3 ft lb (11.8 mkg) at 3000 rpm
Maximum speed	92 mph (147 km/h)	84 mph (135 km/h)	96 mph (153 km/h)

305 Equipment

	GL	GR	GRD	SR
Rear fog lights	●	●	●	●
Reversing lights	●	●	●	●
Electric windscreen washers	●	●	●	●
Two-speed wipers	●	●	●	●
Intermittent wipe		●	●	●
Heated rear window	●	●	●	●
Inertia reel front seat belts	●	●	●	●
Reclining front seats	●	●	●	●
Cloth upholstery	●	●	●	●
Carpets	●	●	●	●
Front and rear door armrests	●	●	●	●
Ashtrays	●	●	●	●
Cigarette lighter	●	●	●	●
Sun visors with vanity mirror on passenger side	●	●	●	●
Quartz clock		●	●	●
Day/night rear view mirror	●	●	●	●
Radio aerial cable with front speaker provision	●	●	●	●
Illuminated heater controls	●	●	●	●
Three-speed heater/demister fan	●	●	●	●
Trip mileage recorder	●	●	●	●
Servo-assisted brakes	●	●		●
Brake warning light: handbrake on/low brake fluid	●	●	●	●
Water temperature gauge	●	●	●	●
Diagnostic test socket	●	●		●
Internally adjustable exterior door-mounted mirror		●	●	●
Lockable glove box		●	●	●
Panel light rheostat		●	●	●
Map pockets		●	●	●
Variable direction side air vents		●	●	●
Rev counter				●
Halogen headlamps				●
Front head restraints				●
Rear seat central armrest				●
Front passenger grab handle				●
Side protector strips				●
Sunroof		○	○	○
Custom pack including laminated windscreen, tinted glass all round, electrically operated front windows, map reading light.				○



PLEASE NOTE:

Every endeavour has been made to ensure that the information contained in this brochure was accurate at the time of going to press. Peugeot Automobiles (UK) Ltd however, reserve the right while preserving the essential characteristics of the models described and illustrated in this brochure to introduce at any time modifications, changes of detail, equipment or accessories as may be considered necessary. The brochure will be updated from time to time but in order to avoid any misunderstanding any person interested in purchasing a vehicle should enquire of an authorised Peugeot dealer as to whether there have been any material alterations, since the date of the issue of this brochure.



1980

Finance & leasing facilities available from Peugeot Finance, Anglo-French Finance Co. Ltd

Take a test drive at your local Peugeot Dealer:

BIGGLESWADE MOTOR CO.
 SHORTNEAD STREET,
 BIGGLESWADE, BEDS.
 TEL : 313768

Peugeot Automobiles UK Ltd.,
 333 Western Avenue, London W3 0RS.

