

# VOLVO 940



**VOLVO**



Volvo 940 SE. Alloy wheels featured are available as an option

**N.B.** Some of the pictures in this brochure are not fully adapted to individual markets and therefore specifications may be different from cars on sale in the UK and the Republic of Ireland. Please consult your local Volvo dealer who will be pleased to give you details. The factory reserves the right to make changes at any time, without notice, to prices, colours, material, equipment or specifications and also to discontinue models.





Total confidence when  
it matters most





Volvo 940 SE





If you value your family's safety, but are concerned about value for money; if your transportation needs encompass both business and family requirements, yet trouble free motoring is important to you, then what could be a better choice than the Volvo 940?

The Volvo 940 combines pleasurable, effortless driving with practicality; sumptuous comfort with functionality; stylish good looks with unrivalled safety.

The 940 is available as either a saloon or an estate, and in a range of specifications designed to suit a wide range of motoring needs.





Volvo 940 Turbo. Roof rails featured are available as an option.









Volvo 940 Turbo





Everybody can sit in safety  
- an added comfort









**1** In a Volvo 940, everybody sits in equal safety, regardless of whether you drive the Saloon or the Estate. Even the rear seat has three-point safety belts and head restraints for all. On the Estate, the head restraints automatically fold away when folding down the rear seat.

For children aged between approximately three and ten (15 - 36kg) there is a special child safety seat which folds away into the rear centre armrest when not in use - a child safety feature that has earned Volvo several international awards.

Behind the Saloon armrest there is a hatch to the luggage compartment so that long narrow items of luggage can be carried in the car.

**2** A factory fitted sunroof is fitted as standard on the 940 SE, GLE and Turbo.

**3** Electrically adjusted front seats are available as an option where leather faced or trico plush upholstery is specified. On the driver's seat, three different positions can be stored in memory. Sit down, press the button, and the seat automatically sets itself to your own individual position - a very handy feature when you take turns driving.

**4** Electrically operated front windows are standard on the 940SE, GLE and Turbo.

The door mirrors are also electrically adjusted and heated. (Optional on the 940 S)

Central locking is standard, as are childproof locks in the rear doors, and the tailgate on Estates.











**1** The Estate - a car of great versatility with room for five adults and 35 cu.ft. of luggage. Fold down one rear seat and there is still room for four adults and long items of luggage.

**2** With two rear seats folded down the car holds three people and even more cargo.

**3** Fold down all the rear seats and the car carries two people with a full 75 cu.ft. of luggage behind them.

There are eyelets in the floor for securing luggage - and under the floor there is room for a further 2 cu.ft.





Volvo 940 Turbo. Cruise control featured is available as an accessory.





In a country crossed by the Arctic circle, designing cars with climate units that provide rapid warmth and clear vision comes naturally.

If you add air conditioning (factory-fitted extra equipment) you can cool off on hot days - which also helps you to drive more safely. The most convenient way to do this is with Volvo's Electronic Climate Control, which automatically provides the in-car temperature you choose. You can read more about climate units on page 19. Air conditioning is standard equipment on the Wentworth.

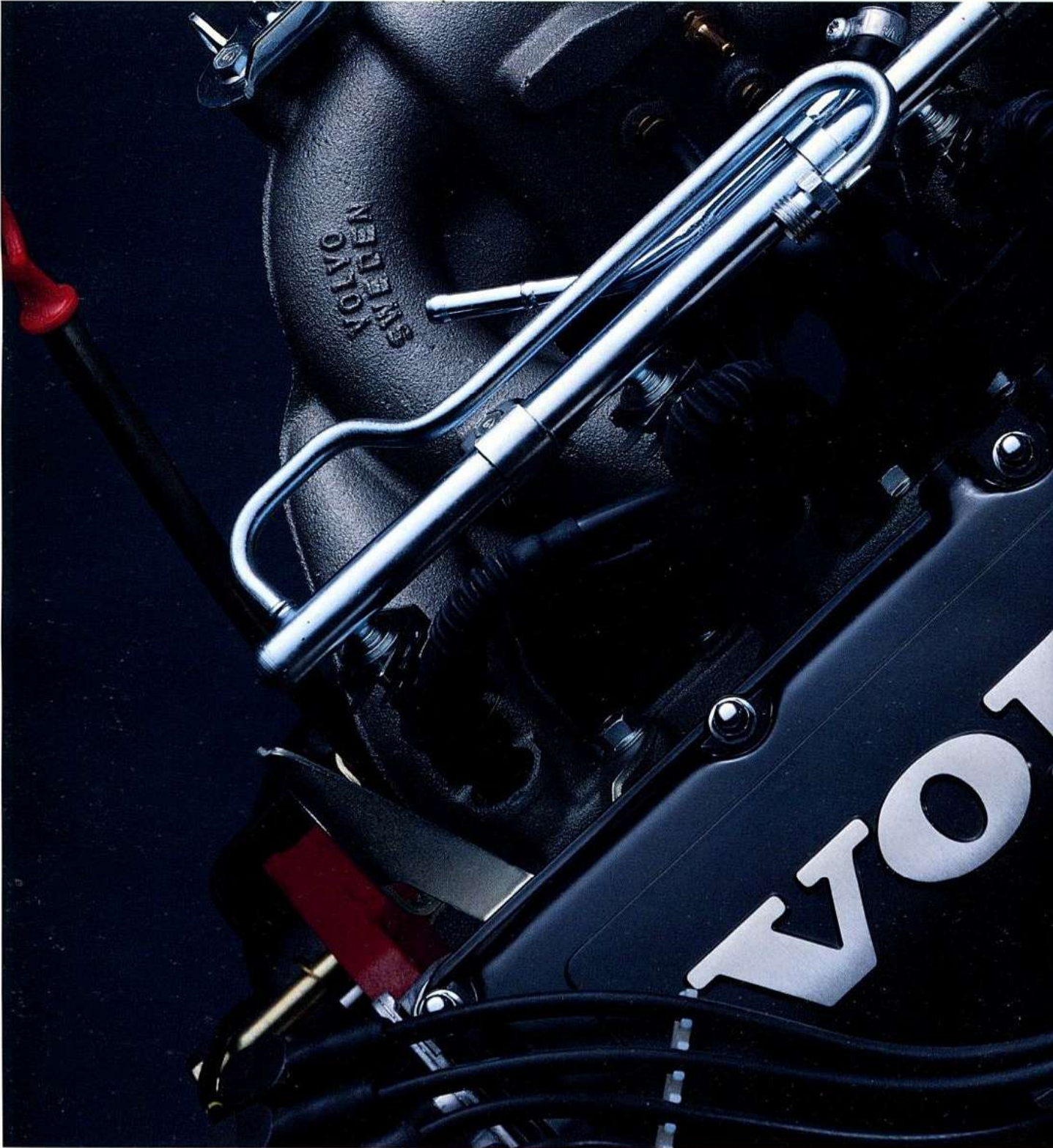
A pleasant acoustic climate is available with the Volvo CR-708 which is fitted as standard to all models. If you wish to upgrade your sound system, a stereo radio cassette with RDS (which automatically selects the strongest transmitter for the programme you are tuned to) and a CD player are available as accessories. The CD-401 control unit operates the CD changer, which is placed in the luggage compartment and has room for six discs.

Cruise control (available as an accessory) enhances safety and comfort alike, especially on long motorway journeys. The speed can be adjusted while the cruise control is engaged.

The ambient temperature gauge (optional) helps you to drive more safely. It shows the temperature just above the road and a warning lamp lights up when there is a danger of black ice.

Your Volvo will be even safer if you specify the optional airbag. The airbag is placed in the centre of the steering wheel. For more details see page 25.









Technology  
which breeds confidence



The Volvo 940 Turbo has a choice of engines, all with good torque and torque flexibility. The high torque at low engine speeds means fast, excellent response over the entire speed range, for safer overtaking and fewer gear changes. These engines also meet the highest standards of fuel efficiency and environmental soundness.

### Smooth and reliable

The Volvo 940 is available with four-cylinder injection engines which have displacements of either 2.3 litres or 2.0 litres, with or without turbo. They have modern efficient fuel and ignition systems for excellent performance and economy. In order to spare the environment, the Volvo 940 has a three-way catalytic converter with electrically preheated Lambda sond. This is the most effective method of emission control there is today, offering more than 90% reduction of toxic emissions.

The Volvo 940 Turbo (2-3 litre) has a maximum power output of 190bhp. The engine has fine characteristics, with high torque and good torque flexibility across the entire engine speed range. The turbocharger is small so that it comes into play at low engine speeds, and the engine responds rapidly and smoothly. There is none of the usual delay and kick when you accelerate. A 165bhp version is also available to special order. Please ask your Volvo dealer for details.

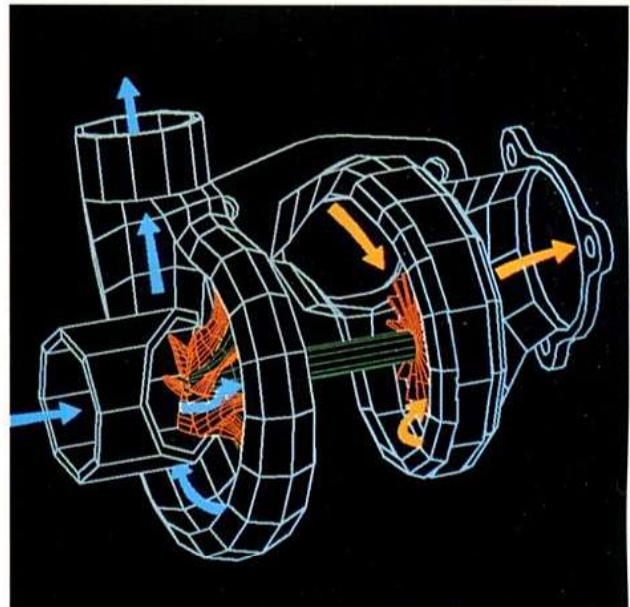
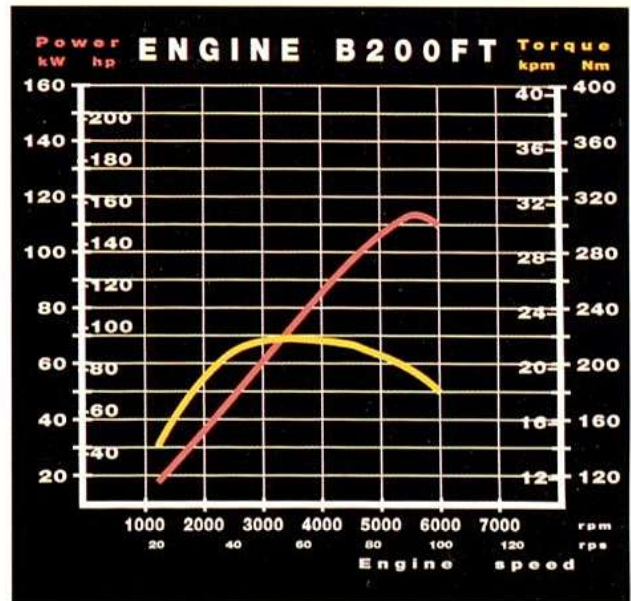
For further fuel efficiency when high mileage demands, the Volvo 940 is also available with a 2.4 litre fuel injected turbo diesel engine.

### Gearboxes for comfort and economy

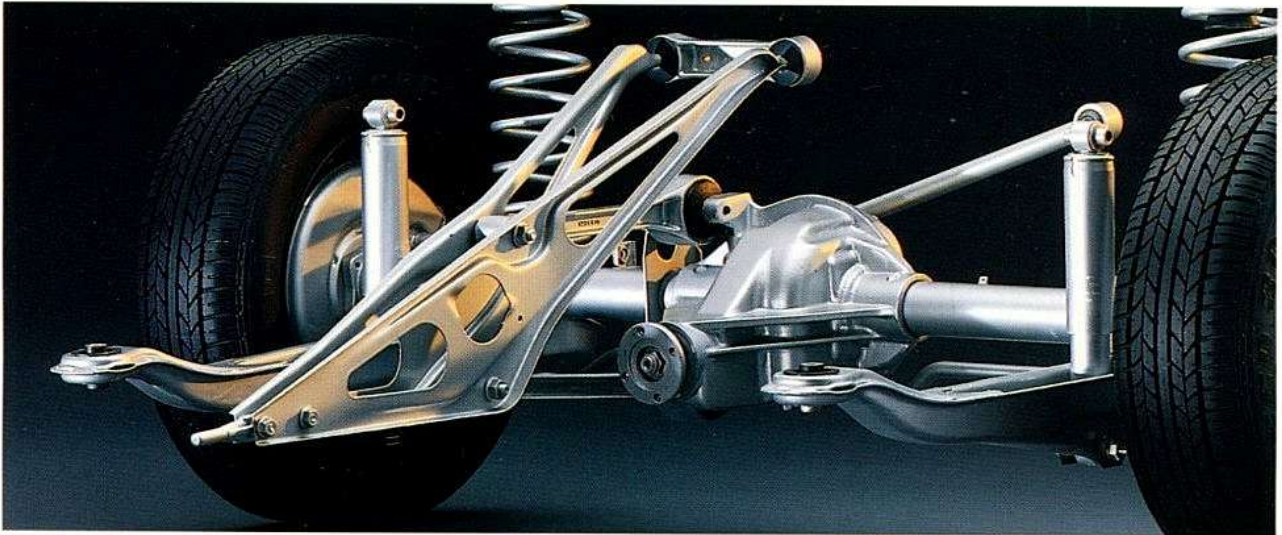
The Volvo 940 is available with a choice of five-speed manual or four-speed automatic gearboxes, all with the highest gear as an energy-saving and quiet overdrive.

The manual gearboxes are easy to operate, with distinct positions. The gearbox on models fitted with turbo or diesel engines has an electrically operated fifth gear which is engaged and disengaged smoothly using a button on top of the gear lever.

The automatic gearboxes make the most of the engine's resources and provide a quiet and comfortable ride.







### **Consistent rear-wheel suspension**

The Volvo 940 has a light live rear axle suspended with a torque rod on a special rubber-mounted subframe for lower noise, fewer vibrations and a lower unsprung weight than with a conventionally mounted live axle. A Panhard rod locates the axle laterally. Wheel angles and track width are always constant, which is important if driving characteristics are to be consistent and safe. The design has a low-overall weight and offers good comfort, roadholding and load capability.

Load compensating suspension is standard on all estates (with the exception of the 940 S). The rear shock absorbers automatically maintain the car at the right height above the ground when it is heavily laden by using the movements of the car to pump up the pressure and by functioning as auxiliary springs when necessary. This means that the car's safe road-holding characteristics are retained and you do not dazzle oncoming traffic.

An automatic differential lock gives you bet-

ter manoeuvrability on slippery roads. To reduce the risk of wheel spin at speeds below 25mph, power and traction are distributed to the driven wheels for the best road grip (standard with turbo petrol variants only).

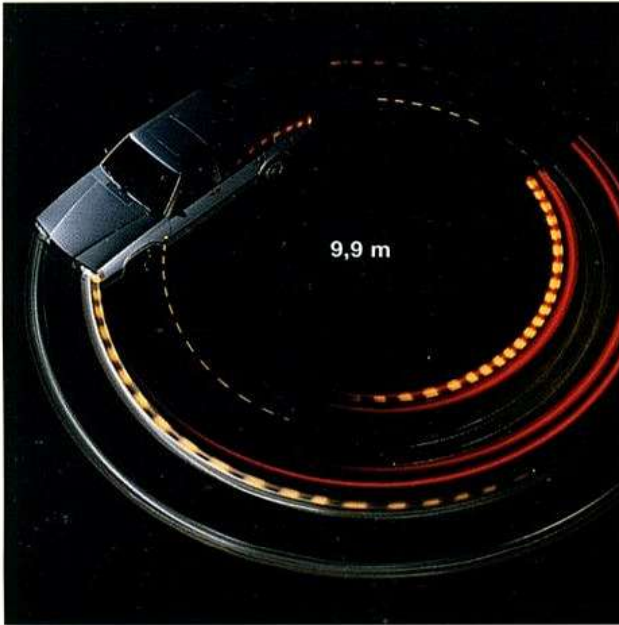
### **Anti-lock brakes for tough conditions**

The Volvo 940 has a powerful brake system that is effective in every situation. The brakes are well-cooled by the airflow, the front discs are ventilated, and the sliding callipers mean that the brakes can be put to the test without the brake fluid being overheated - which would impair braking efficiency.

ABS brakes are fitted as standard to all 940 models. When braking hard, or when the road is slippery, the system keeps the wheels just short of locking. This is much like pumping the brake pedal to avoid skidding. It means safer braking and unimpaired steering ability since the wheels do not lose their grip. The ABS system has a diagnostic function which runs a self-check every time you start the car. A warning lamp on the







dashboard lights up if anything is wrong, and the ABS circuit is disconnected. In the unlikely event of this happening, the brakes work as a conventional system.

#### **Precise steering for effortless manoeuvrability**

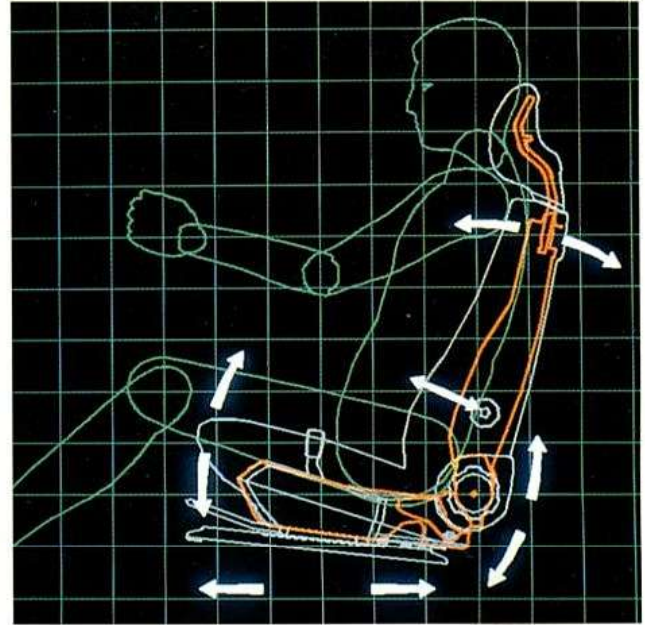
Rack and pinion steering is the natural solution for a car built to meet such exacting demands of comfort, safety and reliability. Rack and pinion steering is compact, with few moving parts, and provides excellent precision and a good feel for the road. Power steering is standard, and is designed to provide good response and road contact. The turning circle is 9.9 metres - few small cars can turn tighter.

*The driving position in a Volvo 940 is the result of research by ergonomic engineers, backed up by the experience of professional drivers and by an ongoing dialogue with customers.*

#### **Designed by orthopaedic specialists**

The Volvo seat has been designed by orthopaedic specialists and is one of the very best in the world.

Driving a car demands a constant interplay between the driver, the car and the road. Your whole body is sensitive to the car's movements and driving conditions. To ensure comfort and concentration are maintained even on the longest of journeys, the seat can be moved backwards and forwards and the cushion can be tilted so you can



always find the position that is just right for you. You can also raise and lower the entire seat and adjust the backrest to any position from the upright to the fully reclined. The effective lumbar support can also be smoothly adjusted.

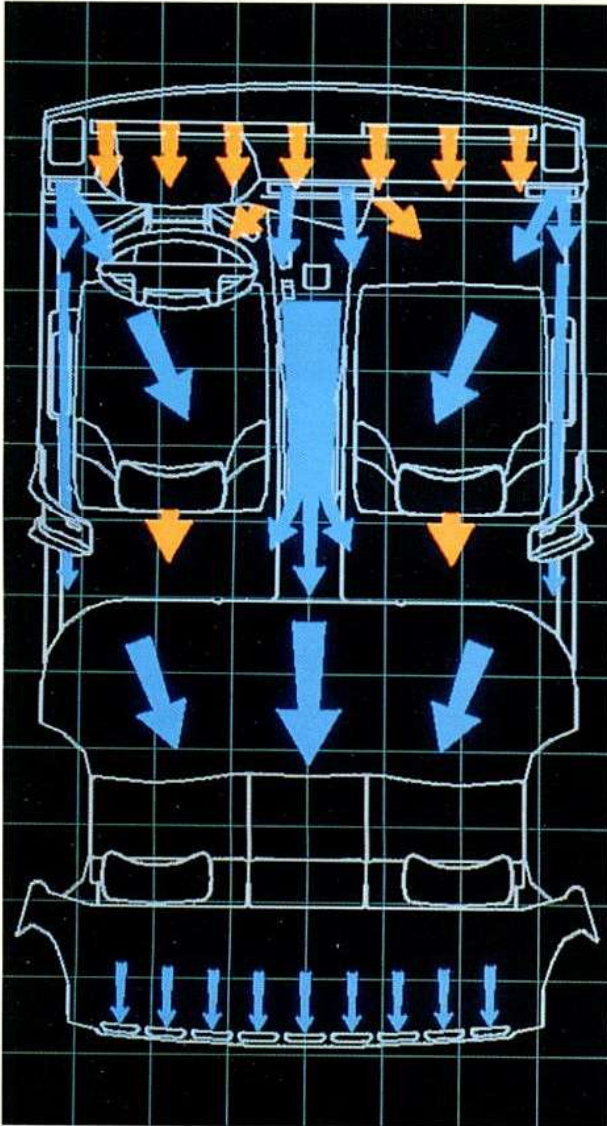
#### **Everything in its place**

The steering wheel does not obstruct your view of the instruments, which are clear and comprehensive.

The gear lever is just where your hand naturally falls, and the movements are crisp and distinct.

All instruments and controls are situated conveniently in front of you - the ones on the central console are angled towards you. A number of warning lights provide you with essential information, with the minimum distraction. The switches and stalks are easy to find, convenient to use and logical - all for the sake of comfort and safety.





#### **ECC - Electronic Climate Control**

An electronic climate control unit (ECC) is optional on the Volvo 940. Sensors measure the temperature of the passenger compartment, incoming sunlight, engine coolant and incoming air. A number of electric motors make sure that all the outlets are adjusted silently and efficiently according to the microprocessor's instructions. All you have to do is select the temperature you want. The heater is based on the air-mix principle, which means that the heat exchanger has a constant flow of hot water from the cooling system, and the air for the passenger compartment is made up of an appropriate mixture of hot and cold air. This is the fastest and most effective way to regulate the temperature. In the recirculation position, the system only takes 10% of the air from outside, which is useful when you want to change the in-car temperature quickly, or

if you want to shut out fumes in a traffic jam.

The air-conditioner uses a completely chlorine-free medium, R134a, in which the chlorine has been replaced by hydrogen which is significantly less harmful to the environment. R134a is also more effective than CFC, so less is required for each unit.

*The Volvo 940 can boast a service life that is among the best. Behind Volvo's renowned reliability and long service life lies detailed and dedicated attention to quality.*

#### **Surface treatment for durability**

Like all Volvo cars, the Volvo 940 goes through a highly effective surface treatment system in order to provide protection against corrosion.

Very effective rust protection is obtained with selective galvanization - about 65% of the body is galvanised. Exposed joints get the thickest zinc layer, at least 20 $\mu$ . This is twice as much as on less exposed areas. Parts that are not exposed to corrosion, like the roof and the firewall, are made of non-galvanised steel to save weight.

The entire body is treated with zinc manganese phosphate to improve paint adhesion, and is then immersed in a bath of electrolytic primer. The electric current ensures that the protective primer gets into every nook and cranny. A protective coat of polyurethane is sprayed onto particularly exposed parts, and stone-chip resistant undercoat is applied to the front of the bonnet. After that, the entire body receives a strong polyurethane surfacer before the topcoat is applied. Metallic paints are also given a protective coating of clear lacquer.

A solvent-free underseal compound is applied to the newly-painted body, and rust preventive oil is sprayed into all the cavities. Further rust protection is provided by ventilating the sill members, and all places where water might collect are carefully drained.

The wheel housings are protected by plastic on the inside, and together with the plastic parts under the bumpers, this means that the most vulnerable parts of the body consist of protective plastic. This saves the paintwork and reduces the risk of corrosion.



# Technical Specifications

ENGINE OPTIONS					
CAR TYPE	940 S	940 SE	940 WENTWORTH	940 GLE	940 TURBO
2.0 Litre Injection (B200F)	○	○	-	-	-
2.3 Litre Injection (B230F)	○	○	-	○	-
2.0 Litre Turbo (B200FT)	○	○	○	○	○
2.3 Litre Turbo (B230 FTX)	-	-	-	-	○
2.4 Litre Turbo Diesel (D24 Tic)	-	-	-	○	-

ENGINE SPECIFICATIONS					
ENGINE	2.0 Litre injection B200F	2.3 Litre injection B230F	2.0 Litre Turbo B200FT	2.3 Litre Turbo B230FTX	2.4 Litre Turbo Diesel D24 Tic
Configuration	In-line	In-line	In-line	In-line	In-line
Cylinders	4	4	4	4	6
Bore x stroke (mm)	88.9/80	96/80	88.9/80	96/80	76.5/86.4
Engine capacity (cc)	1986	2316	1986	2316	2383
Max. output ECE (hp/rpm)	111/5700	130/5500	155/5600	190/5100	122/4800
Max. torque ECE (Nm/rpm)	158/2800	185/2950	234/3600	280/3800	235/2400
Octane rating	95 unleaded*	95 unleaded*	95 unleaded*	95 unleaded*	Diesel
Compression ratio					
Fuel system	Electronic Injection	Electronic Injection	Electronic Injection	Electronic Injection	Diesel
Exhaust system	Catalytic Converter with Lambda sond	Catalytic Converter with Lambda sond	Catalytic Converter with Lambda sond	Catalytic Converter with Lambda sond	-

FUEL TANK					
Volume (litre/gallons)	75/16.5	75/16.5	75/16.5	75/16.5	75/16.5

TRANSMISSION					
Manual	5 Speed	5 Speed	4 Speed + Electrically operated 5th gear	4 Speed + Electrically operated 5th gear	4 Speed + Electrically operated 5th gear
Automatic	4 Speed	4 Speed	4 Speed	-	4 Speed
Automatic locking differential	-	-	●	●	-

STEERING SYSTEM (rack & pinion)					
Power assisted	●	●	●	●	●
Turning circle (m)	9.9	9.9	9.9	9.9	9.9
Tyre size	185/65	185/65	185/65	205/55	185/65

PERFORMANCE					
Top speed (mph)	111	118	124	133	115
Acceleration 0-62 mph (s)	13.2	11.5	9.6	8.7	11.6

\* Please note: You must only use unleaded petrol in a car equipped with a catalytic converter.

Data valid for manual transmission.

● Standard

○ Option

- Not available



**WEIGHTS AND SIZES - SALOONS**

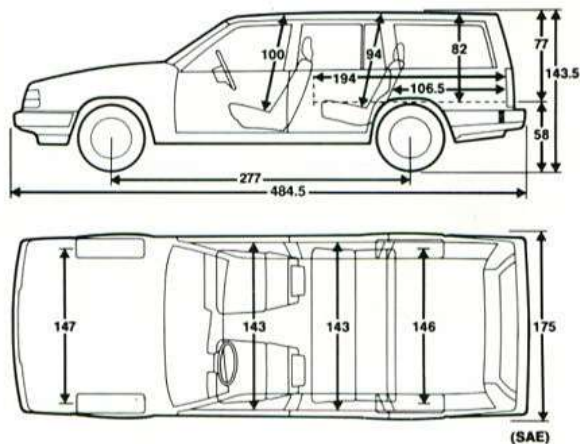
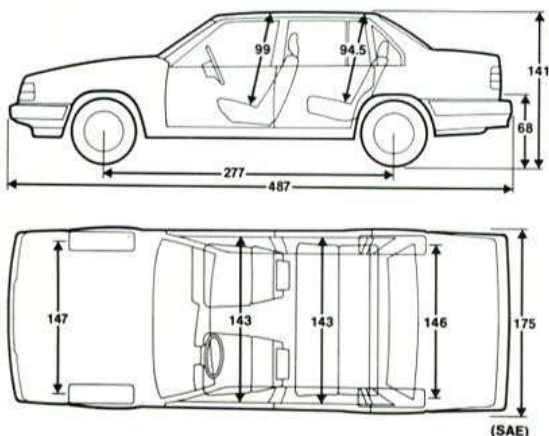
CAR TYPE	940 S	940 SE	940 WENTWORTH	940 GLE	940 TURBO
<b>WEIGHTS (approx)*</b>					
Av. Kerb weight (Kg)	1458	1458	1458	1458	1458
Max. permissible towing weight (Kg)	1600	1600	1600	1600	1600
Max. recommended towing weight (Kg)	1239	1239	1239	1239	1239
Optimum/Max. nose weight (Kg)	50/75	50/75	50/75	50/75	50/75
<b>LUGGAGE COMPARTMENT</b>					
Volume (cu.ft.)	16.6	16.6	16.6	16.6	16.6

**WEIGHTS AND SIZES - ESTATES**

CAR TYPE	940 S	940 SE	940 WENTWORTH	940 GLE	940 TURBO
<b>WEIGHTS (approx)*</b>					
Av. Kerb weight (Kg)	1536	1536	1536	1536	1536
Max. permissible towing weight (Kg)	1600	1600	1600	1600	1600
Max. recommended towing weight (Kg)	1306	1306	1306	1306	1306
Optimum/Max. nose weight (Kg)	50/75	50/75	50/75	50/75	50/75
<b>LUGGAGE COMPARTMENT</b>					
Volume (cu.ft.)	35	35	35	35	35
Volume rear seats down (cu.ft)	75	75	75	75	75

Dimensions in cm. N.B. Interior dimensions do not include sunroof

\* Please note all weights are based on the 2.0 litre turbo engine



**Warranty:** 12 months warranty - unlimited mileage. 12 months RAC cover - please ask your dealer for details.

The information, specification and illustrations relating to the models described in this brochure, may be different in respect of similar vehicles currently on sale in the UK. When making enquiries about any vehicle, please ask your Volvo Dealer to advise you of any differences from the specifications which are contained in the brochure. Specifications may differ in the Republic of Ireland.

In the interest of continuing product development, the factory reserves the right to make changes at any time, without notice, to prices, colours, materials, equipment or specifications and also to discontinue models.





Volvo 940 SE





Safety innovation  
- an unrivalled commitment



*Every Volvo embodies more than 60 years' commitment to setting new standards of automotive safety. Safe, predictable handling in all conditions helps you avoid dangerous situations. Should an accident be inevitable, the Volvo 940 offers unrivalled protection. A long line of impartial traffic safety surveys have all reached the same conclusion: you are safer in a Volvo.*

### **Safe in reality**

There are different ways of determining the safety of a car. Different types of laboratory test can yield results that provide an indication of the safety level of various parts of the car but the ultimate test is reality itself.

Data is compiled about all serious accidents in Sweden involving Volvo cars. Our own specialist provides us with information about injuries from a medical perspective. Since the early seventies, we have been analysing over 2,000 accidents a year through our own Traffic Accident Research Commission. Particularly serious or unusual accidents are studied in detail. All this has provided us with comprehensive and unique statistical data.

When we compare the statistics with our laboratory tests, we can predict how new designs will affect the safety in our cars. We can even carry out computer simulations of common accident types, thus reducing the need for full-scale tests. We are quite simply learning more from every

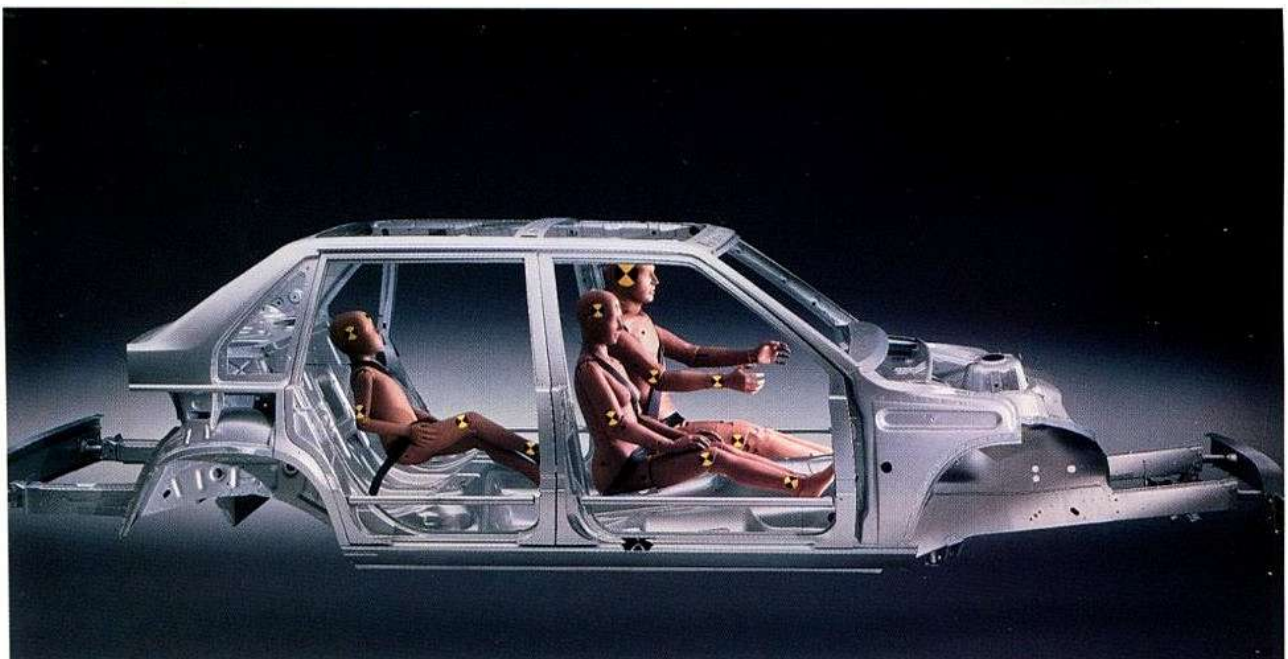
crash test we perform, and our safety research is progressing at an ever faster pace.

### **Safety cage and crumple zones**

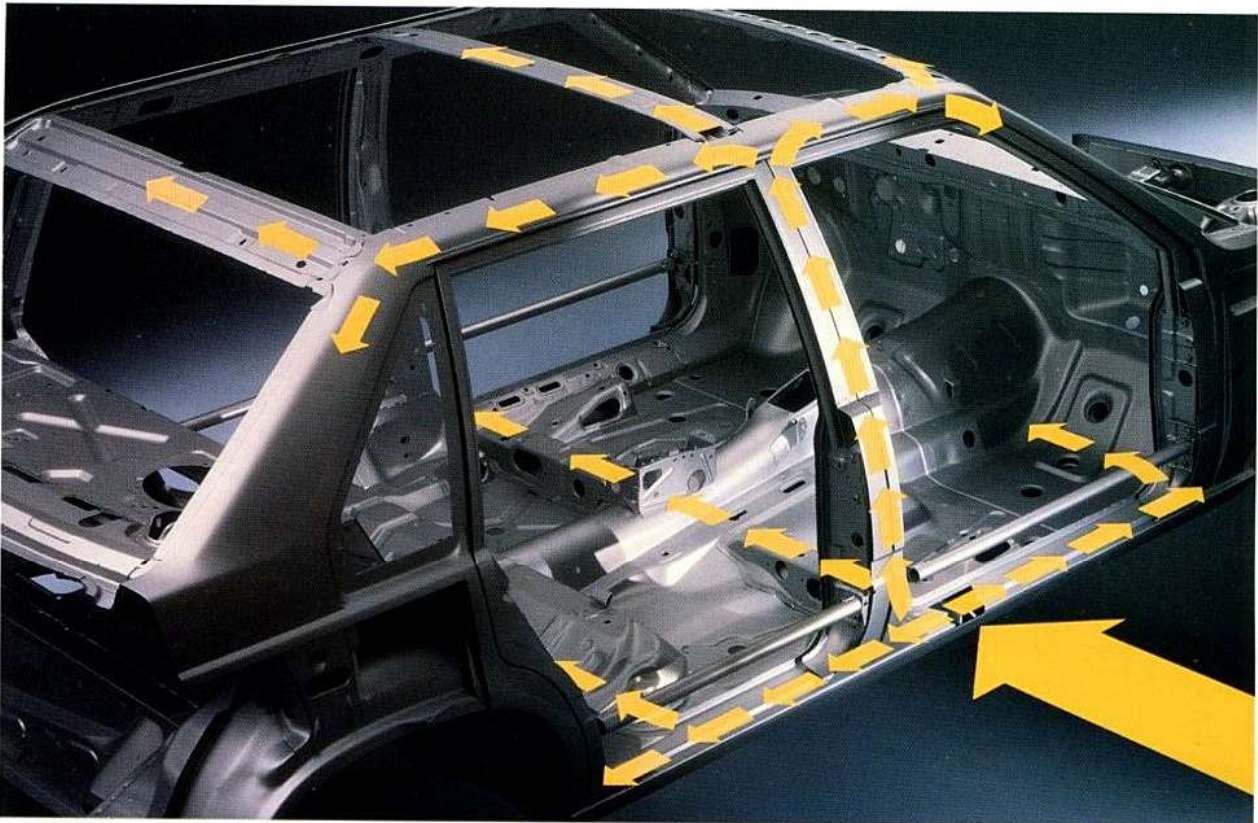
All modern cars are built according to the same safety principle in one respect: they have a very strong safety cage protected at the front and rear by soft, energy-absorbing crumple zones which take up the impact by collapsing in a planned sequence. Our cars are no exception. Quite the reverse, in fact - it was Volvo that developed the method.

In a head-on collision the impact is mainly absorbed in the robust front side members, which have been designed to collapse in a predetermined manner. The bonnet, too, folds so as not to be pushed through the windscreen. The steering column is in sections which give way if the front axle is forced back in a collision. This prevents the steering column from intruding into the passenger compartment - it absorbs energy and becomes an important part of the car's safety system instead.

The rear of the car has a similar crumple zone. The rear side members, boot lid and spare wheel all play a part in the system that protects the passenger compartment in a rear-end collision. The petrol tank is well protected by the rear axle. In order further to reduce the effects of a rear-end collision, head restraints are standard on all five seats.







**SIPS - Unique side impact protection**

Side collisions are the second most common type of collision - and the type in which it is most difficult to protect the occupants. There is no room for large crumple zones, and the safety cage does not have the same ability to withstand an impact from the side. The fact that the occupants are so close to the doors does not make things better. Volvo's SIPS - Side Impact Protection System - is a way of distributing the forces in a side collision so effectively that the side is pressed in far less than it would be on a conventional car. The energy is absorbed and diverted, and no single part of the design can give way and cause the structure to collapse.

Floor and roof members, window pillars, door sills and doors all form part of the energy-absorbing design. The roof also plays its part.

Thanks to SIPS, intrusions in the passenger compartment can be reduced and retarded so that the speed of impact for the occupants is much less and any injuries are reduced. SIPS has been statistically estimated to reduce severe injuries in side collisions by an average of 25%.

**Safety belt and airbag - a complete system**

The heart of the safety system in the Volvo 940 - as in all Volvo cars - is the three-point safety belt. The driver's side of the Volvo 940 can also be fitted with an airbag, which is hidden in the centre of the steering wheel. In a sufficiently strong collision it inflates in a fraction of a second to





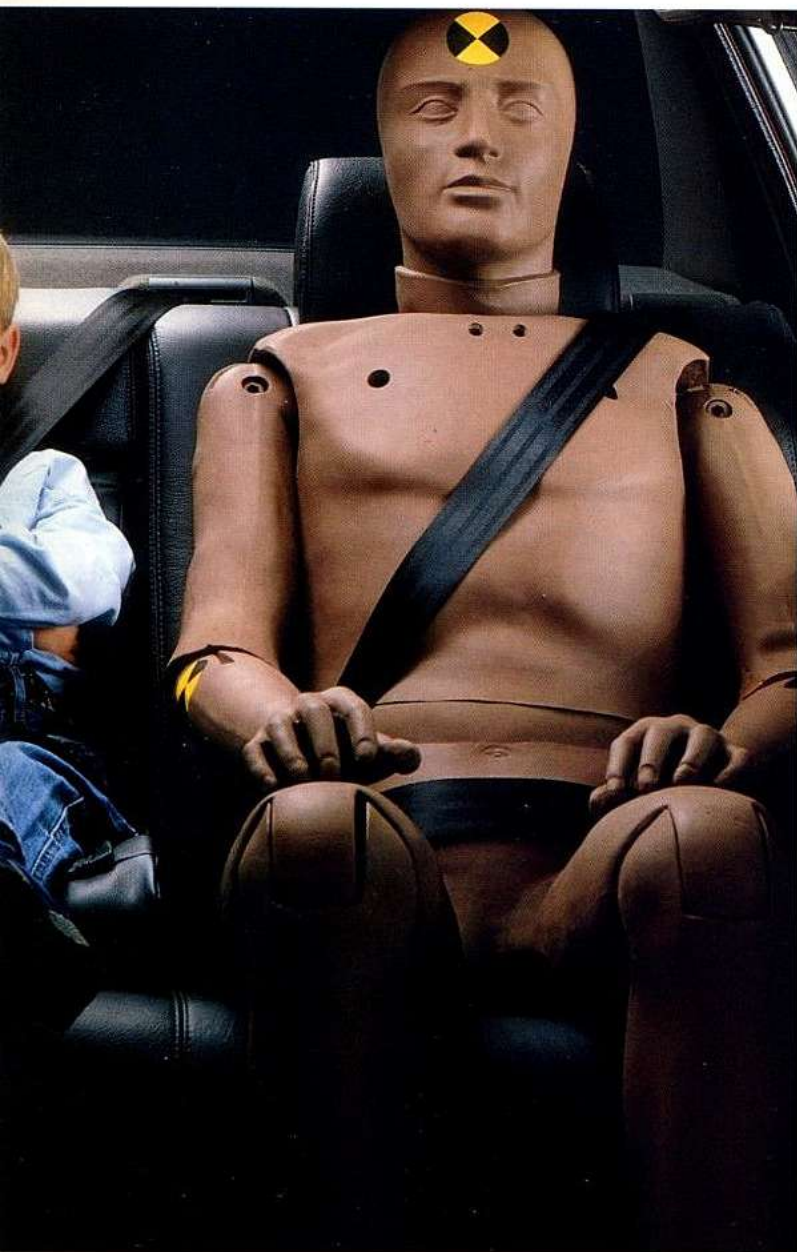


protect the driver's head. The airbag is not an alternative to the safety belt, but an effective supplement that further reduces injuries to the chest, neck and face.

#### **Effective belt pre-tensioner**

At the belt anchorage on each front seat there is a belt pre-tensioner that eliminates any slack in the seat belt bands in a collision. The device is operated by a strong torsion rod, and reacts in 25 milliseconds, tightening up to 80mm in both the chest and waist bands. All five seats are designed to prevent you from slipping under the belt in a collision - so you sit safely when safety is most needed.





### **Everybody should travel equally safely in a Volvo**

Volvo takes child safety very seriously. We feel that children are the most valuable cargo you can carry and have the same right to safety in the car as adults. Our child safety equipment meets the needs of children in cars from birth until they are big enough to wear the standard safety belt.

Your dealer will be pleased to advise you on the most appropriate restraints for your children.

#### **Integrated child safety seat**

The three-point inertia-reel safety belt is the most vital part of a car's safety system, and should be available on all seats - so the Volvo 940 has three of these belts in the rear seat. The one in the

middle also provides the basis for yet another Volvo safety innovation: the Volvo 940 is equipped with a foldable child safety seat integrated into the rear centre armrest. Fitted to both the saloon and estate models, it can be opened and closed in seconds. This means you can place a child aged between approximately three and ten in what is now the safest seat in the car.

#### **Three-point seat belts for seven in the estate**

For those occasions when even five seat belts are not enough, a rear facing auxiliary seat with two three point seat belts can be fitted as an accessory. For further details, see page 32.





Volvo 940 SE Saloon and Estate. Bodykit, rear boot spoiler, rear decor panel, wind deflectors on the sunroof and side windows, suspension lowering kit and alloy wheels featured on the saloon, and roof rails and alloy wheels featured on the estate are available as accessories





Accessories  
to add the  
finishing touch









*We are all different, both as people and as motorists. Your Volvo 940 should suit your own practical requirements and personal style.*

*This is why there is a wide range of extra equipment to choose from, all designed and manufactured to fit your very own Volvo. You will find some examples on the following pages.*

**1** Sport steering wheel - a sturdy, leather-clad sports steering wheel. Diameter 365mm.

**2** Alloy wheels, 7x15". Recommended tyre size 195/60-15 or 195/65-15. One of the many elegant aluminium wheels you will find at your Volvo dealer.

**3** Volvo 940 Saloon equipped with rear spoiler and decor panel between the rear lamps - an example of how you can give your car a personal and sporty appearance.

**4** CR-901 RDS stereo cassette radio. Theft coded. The radio automatically selects the strongest transmitter for the station you are tuned to. Traffic announcements interrupt both radio and tape player. Power output 2 x 6W.

Add the HA4120 (2 x 20W) or the HA4140 (2 x 40W) amplifier and the CD401 control unit for a CD changer.

**5** CD changer with room for six discs, for installation in the luggage compartment.

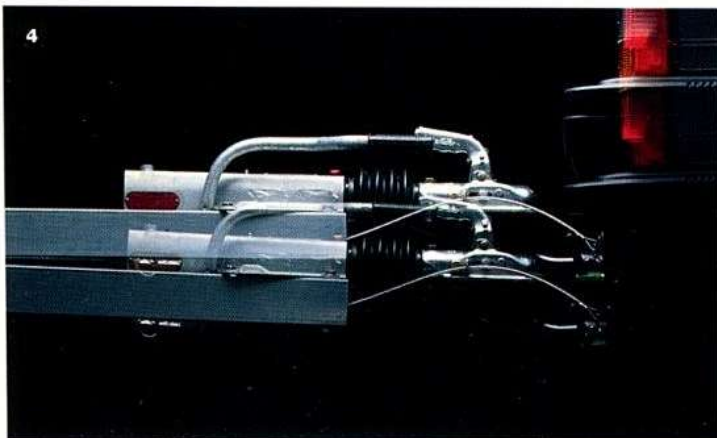
**6** The Volvo booster cushion and backrest, suitable for children from approximately 3-10 years, is just one of a range of tested and approved child restraints.

**7** Cellular telephone. Your Volvo dealer has a range of models to choose from.

**8** Volvo Alarm System. Remote-controlled alarm with siren. Blocks the starter motor. The remote controller activates the alarm at the same time as locking the doors. For further information about alarms, please speak to your Volvo dealer.

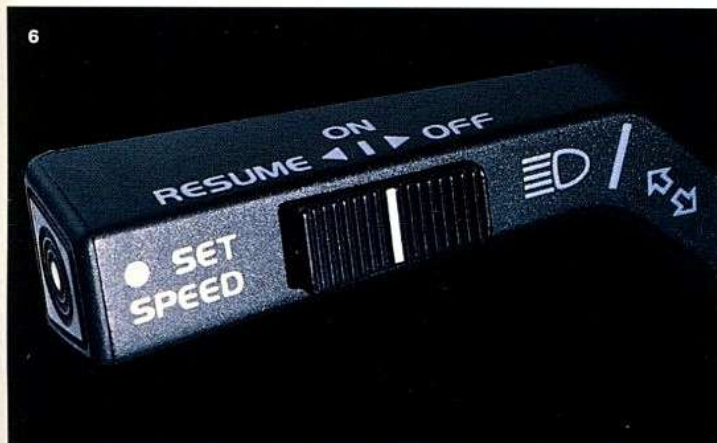








6



7



8



9



**1** Auxiliary seat. Rearward-facing extra seat for two children (max 80 kg), with head restraints and three-point safety belt. Easily fitted. Folds down onto the luggage compartment floor.

**2** Luggage space divider. Keeps pets clear of luggage and vice-versa.

Safety net. Prevents luggage from being thrown forward onto the driver or passenger when braking hard. Can be folded out of the way when not in use.

**3** Load cover for the 940 Estate. The screen is pulled out over the luggage. Easy to remove when you need room for higher luggage.

**4** Load compensating suspension. Lifts the rear suspension to normal level even when the car is heavily loaded. Fully automatic. (Standard on all Estates, except 940S).

**5** Detachable towbar. The towbar ball can be put out of the way when not in use. A fixed version is also available.

**6** Cruise control maintains the speed you select. Disconnects automatically if you touch the brake or the clutch.

**7** Ambient temperature gauge. Shows the temperature just above the road surface. A warning lamp indicates if there is any risk of black ice.

**8** Armrest with cupholder. Raised armrest with two cup-holders that can be pulled out for two cups or bottles each - one in front, one behind.

**9** Load Liners for saloons and estates provide all round protection for your car interior.



# Standard and optional equipment

CAR TYPE	940 S	940 SE	940 Wentworth	940 GLE	940 Turbo
<b>EXTERIOR</b>					
Metallic paint	○	○	OP	○	○
Tinted windows	●	●	●	●	●
Heated rear window	●	●	●	●	●
Lockable fuel filler cap	●	●	●	●	●
Alloy wheels - 20 spoke 15" - Tyre size 185/65	○	○	OP	●	-
Alloy wheels - 5 spoke 16" - Tyre size 205/55	○	○	-	○	●
Vented wheel covers	●	●	●	-	-
Catalytic converter with Lambda sond	○	●	●	●	●
<b>SAFETY</b>					
SIPS - Side Impact Protection System	●	●	●	●	●
Automatic load compensating rear suspension (estates only)	○	●	●	●	●
Airbag - SRS (driver's side only)	○	○	○	○	○
Front seat belt pretensioners	●	●	●	●	●
Laminated windscreen	●	●	●	●	●
High level rear brake light	●	●	●	●	●
Head restraints - two front and three rear	●	●	●	●	●
Rear fog light & hazard warning lights	●	●	●	●	●
Front fog lights	●	●	●	●	●
Head lamp wash/wipe	●	●	●	●	●
Rear wash/wipe, including intermittent (estates only)	●	●	●	●	●
Three point inertia reel seat belts front/back (five in total)	●	●	●	●	●
Safety belt reminder	●	●	●	●	●
Collapsible steering column	●	●	●	●	●
Integrated child safety seat - rear arm rest	●	●	●	●	●
Child proof locks - rear doors & tailgate on estate	●	●	●	●	●
Load lashing eyes (estates only)	●	●	●	●	●
Anti lock brakes (ABS)	●	●	●	●	●
Automatic locking differential	○*	○*	●	○*	●
Warning light on open doors	●	●	●	●	●
Bulb failure warning	●	●	●	●	●
External temperature gauge (including ice alert)	○	○	○	○	○
Permanent dim/dip headlamps	●	●	●	●	●

\* Please note: You must only use unleaded petrol in a car equipped with a catalytic converter

Data valid for manual transmission

※ Automatic locking differential is standard equipment on vehicles with B200FT and B230FTX engines

◆ Available with leather faced upholstery only

♣ Available in conjunction with electrically operated driver's seat only

○ Petrol models only

▲ Available on vehicles with B200FT engine only

● Standard ○ Option - nco Optional Equipment available at no extra cost

OP Option pack Wentworth

- Not available



CAR TYPE	940 S	940 SE	940 WENTWORTH	940 GLE	940 TURBO
<b>COMFORT</b>					
Power steering	●	●	●	●	●
Automatic transmission	○	○	○	○	○▲
Central locking	●	●	●	●	●
Reclining front seats with lumbar support	●	●	●	●	●
Heated front seats	●	●	●	●	●
Electric steel sunroof	-	○	-	●	○
Manual steel sunroof	-	●	-	-	●
Electrically adjustable and heated door mirrors	○	●	●	●	●
Internally adjustable door mirrors	●	-	-	-	-
Electric windows - front	○	●	●	●	●
Electric windows - rear	○	○	OP	●	○
Air conditioning	○	○	●	○	○
Electronic Climate Control	○	○	-	○	○
Electrically operated driver's seat with memory	◆	○	○	○	○
Electrically operated passenger seat	▶	○	○	○	○
<b>INTERIOR</b>					
Trico plush upholstery	●	●	●	nco	-
Plush/leather-faced upholstery	○	○	○	nco	●
Leather-faced upholstery	○	○	op	●	nco
Hatch for long items - rear seat (saloons only)	●	●	●	●	●
Asymetric split rear seat - estates only	●	●	●	●	●
Electronically tuned stereo/radio cassette	●	●	●	●	●
Six speaker system	●	●	●	●	●
Manual aerial	●	-	-	-	-
Electric aerial	-	●	●	●	●
Lockable glove box	●	●	●	●	●
Tachometer	●	●	●	●	●
Courtesy light	●	●	●	●	●
Reading Lamp front	-	-	-	-	●
Under floor storage compartment (estates only)	●	●	●	●	●

The information, specification and illustrations relating to the models described in this brochure, may be different in respect of similar vehicles currently on sale in the UK. When making enquiries about any vehicle, please ask your Volvo Dealer to advise you of any differences from the specifications which are contained in the brochure. Specifications may differ in the Republic of Ireland.





Trico plush upholstery



Plush/leather-faced upholstery



Leather-faced upholstery



# VOLVO AND THE ENVIRONMENT



Volvo know that the basis of environmental concern is a healthy respect for others. What's more, the earlier it begins the better. At Volvo we start thinking environmentally at the drawing board. Our concern about exhaust emissions began over 20 years ago, and we pioneered the development of catalytic converters. Up to 95% of the hydrocarbon, nitrogen oxide and carbon monoxide emissions on your new Volvo are now eliminated. We are working hard to eliminate the sol-

vents and CFCs used in car manufacture. Indeed, we were the first manufacturer to use solvent-free underseals on a large scale and we are increasing our use of waterborne metallic paints. Ecologists the world over value the fact that our long-lasting cars lessen the waste burden. We promise to use our position at the forefront of technology to be proactive in minimising the harm to the environment and to promote pro-environmental issues within the industry.



# Colour and upholstery

CAR TYPE	940 S	940 SE	940 Wentworth	940 GLE	940 TURBO
<b>COLOUR</b>	<b>UPHOLSTERY MATERIAL</b>				
	Trico Plush	Trico Plush	Trico Plush	Leather-faced	Plush-Leather faced
130 Silver Metallic	Black	Black	Black	Grey	Black
189 White	Grey	Grey	Grey	Black	Black
214 Dark Grey Metallic	Grey	Grey	Grey	Grey	Black
406 Deep Blue Metallic	Grey	Grey	Grey	Grey	Grey
412 Verdigris Metallic	Grey	Grey	Grey	Grey	Grey
601 Signal Red	Grey	Grey	Grey	Grey	Grey
604 Midnight Blue	Grey	Grey	Grey	Beige	Grey

Certain colours combine well and have proved the most popular choices. These standard colour and upholstery combinations are detailed here. However, if your preference is different, your dealer will be pleased to discuss other colour combinations available to special order. Please note that such special orders may take longer to deliver



6210 Black Trico Plush



6610 Black Plush/Leather-Faced



6911 Black Leather-Faced



6250 Beige Trico Plush



6650 Beige Plush/Leather-Faced



6951 Beige Leather-Faced



6270 Grey Trico Plush



6670 Grey Plush/Leather-Faced



6971 Grey Leather-Faced



6230 Blue Trico Plush

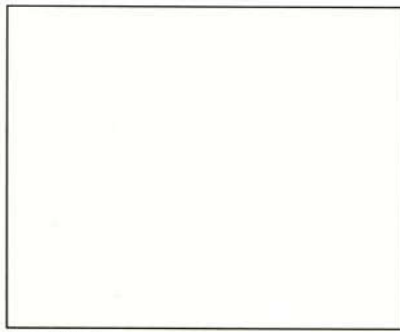


6630 Blue Plush/Leather-Faced

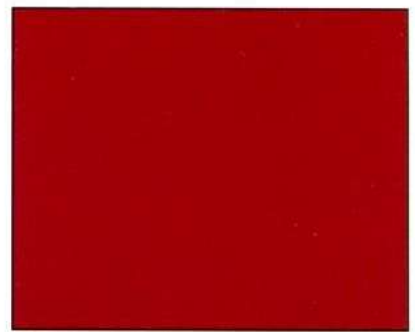




**019 Black**



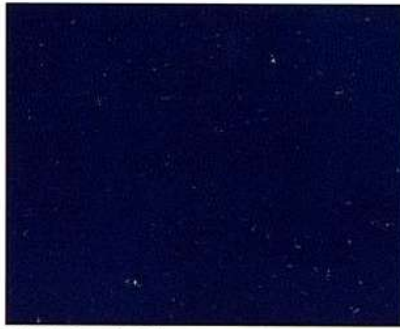
**189 White**



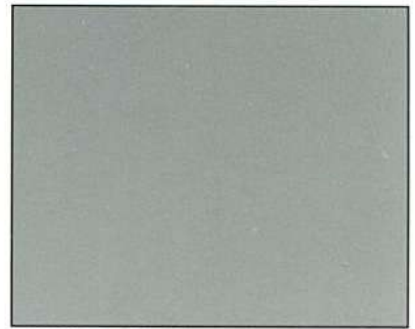
**601 Signal Red**



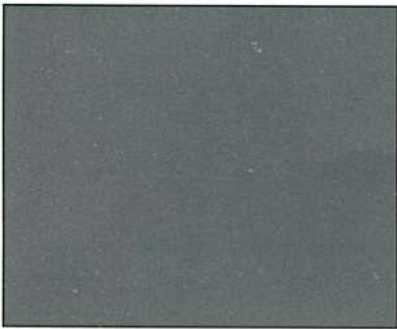
**604 Midnight Blue**



**605 Atlantic Blue**



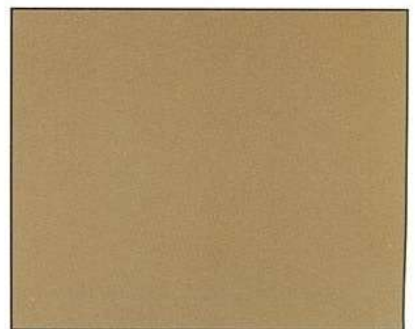
**130 Silver Metallic**



**177 Silver Grey Metallic**



**214 Dark Grey Metallic**



**400 Gold Metallic**



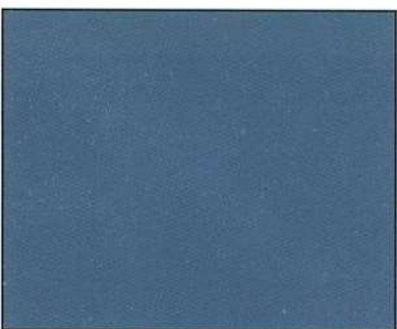
**406 Deep Blue Metallic**



**409 Wine Red Metallic**



**412 Verdigris Metallic**



**415 Light Blue Metallic**

It is not possible to reproduce the exact original colour shades in printed matter. This applies to both paint finishes and upholstery. Ask your dealer to show you the paint colours and upholstery materials in the sample book. When making enquiries about any vehicle please ask your Volvo Dealer to advise you of any differences from the specifications which are contained in the brochure.



**VOLVO**

**Volvo Car UK Limited**

Globe Park, Marlow, Buckinghamshire SL7 1YQ