

Volkswagen Information Service. Telephone 0800 333 666

Internet: www.volkswagen.co.uk

© Volkswagen Group United Kingdom Limited 2003.

Issue: 1 March 2003. Printed in UK.

PVW130GOLR



The Golf *R32*





The R32: sports car passion, with everyday practicality.

Because driving takes in so many different scenarios, it's not easy to find a car that delivers in every situation. Perhaps you need a car that has the practicality of a hatchback, so that it's ideal for work and leisure. Should you be accommodating friends, you'll need a rear compartment where they can enjoy real space and comfort. But let's not forget the time when you need to be inspired. Really inspired.

'R' symbolises its race inspired heritage through the technology and temperament of motorsport. It equates to a transverse engine that boasts a 3.2 litre capacity in a 'V' formation. On the road it delivers 240 bhp and a top speed of 153 mph, where the law permits. Its stylish bodywork includes a honeycomb front air intake, rear roof spoiler and widened sills.

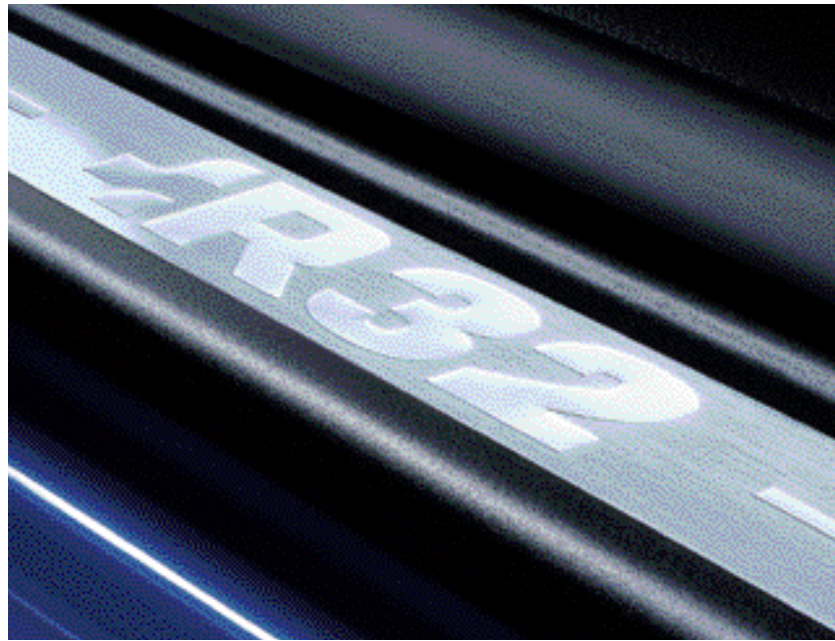
To complement these subtle aerodynamic enhancements, the R32 sits 20 mm lower than the standard Golf thanks to a specially developed sports suspension. In combination, these design features help create the necessary aerodynamics and body rigidity to enjoy the R32's exhilarating performance to the full.

Performance marks.

At the heart of the R32 beats a powerful V6 engine. Its maximum torque of 320 Nm is available at just 2,800 rpm to ensure swift acceleration throughout the gear ranges. The slick six speed gearbox ensures fast changes as the R32 powers its way from standstill to 62 mph in just 6.6 seconds.

As with all Volkswagen models, safety is a top priority, so such performance is matched by an equally impressive braking system. This is achieved through large dimensioned, internally ventilated discs to the front and rear. The blue brake calipers are clearly visible behind the stylish 18 inch 'Aristo' wheel rims shod with 225/40 ZR18 tyres.

With the R32 it's not just about raw power, it's about blending engineering, high technology and performance data into a genuine driving experience.



The threshold to great performance: the R32 logo is etched on the stylish widened sills.



Behind the radiator grille lies the heart of the R32: the powerful 240 bhp, V6 engine.



The exhaust tailpipes, both left and right, provide more than aesthetic enhancement.





Visual performance.

From the moment you first climb into the R32 your senses are stimulated. It could be the sight of the ergonomically crafted 'König' sports seats with integrated head restraints designed for maximum support during tight cornering. Or the feel of the leather rimmed three-spoke steering wheel specially moulded for improved grip. Perhaps it's the sound of the 'Gamma' radio through the eight strategically positioned speakers for maximum acoustics. Wherever you look, you'll discover a wealth of high quality features such as tinted side and rear windows, front electric windows, heated seats, Climatronic air conditioning and an alarm with remote central locking. Great attention to detail is clearly visible, highlighted through several areas of brushed aluminium trim. This extends to the aluminium foot pedals, including the accelerator – the key to unleashing the unique sound out of the two chrome tailpipes.



Interior shown is R32 with optional black leather upholstery and navigation/radio system with colour screen.



Performance with safety.

With the performance of the R32 comes a responsibility to safety. In this respect, the R32 holds no compromises. There are driver's and front passenger's airbags, front seat side impact airbags plus curtain airbags. There are several brake and engine management systems that electronically monitor driving situations and intervene to defuse critical situations. These highly intelligent systems include Anti-lock Braking System (ABS), Electronic Brake-pressure Distribution (EBD), Electronic Stabilisation Programme (ESP) which includes Anti-slip Regulation (ASR) and Electronic Differential Lock (EDL). However, these safety features are no excuse to drive recklessly despite their proven quality.



Perfectly positioned for ease of use: the 'Gamma' RDS radio, six CD autochanger and Climatronic air conditioning.



The three-spoke leather rimmed steering wheel is ergonomically moulded for added grip. Cruise control and navigation/radio system with colour screen are optional at extra cost.



Even the foot pedals are designed with performance in mind.



Interior shown is R32 with optional black leather upholstery.

Controlled power.

When a car possesses the performance potential of the R32, only the most capable chassis and drive system will suffice. So faced with 320 Nm of torque at 2,800 rpm, we decided to employ the ultimate all wheel drive programme – 4MOTION.

This four wheel drive system constantly regulates distribution of the drive between the front and rear axles and, because the system is electronically controlled, it gives the optimum traction for most driving situations.

With all four wheels working in harmony, the R32 can unleash its power in a safe and controlled manner.

The R32: sports car performance, without sports car compromises.



Technical Specification.

<p>Technical Data</p> <p>Battery, A (Ah): 340 (70)</p> <p>Acceleration, secs 0 - 62 mph: 6.6</p> <p>Bore/stroke, mm: 84.0/95.9</p> <p>Alternator, amps: 70</p> <p>Gearbox: Six speed manual, four wheel drive – 4MOTION</p> <p>Unladen weight, lbs/kgs[†]: 3334/1512</p> <p>Gross vehicle weight, lbs/kgs: 4410/2000</p> <p>Payload, lbs/kgs[†]: 1076/488</p> <p>Axle load limit, lbs/kgs: Front: 2315/1050</p> <p style="padding-left: 100px;">Rear: 2183/990</p> <p>Maximum roof load, lbs/kgs: 165/75</p> <p>Top speed, mph (km/h) (where law permits): 153 (247)</p> <p>Cubic capacity, ltrs/cc: 3.2/3189</p> <p>Maximum torque, lbs.ft/Nm: 236/320</p> <p style="padding-left: 20px;">at rpm: 2800</p> <p>Maximum output, bhp/kw: 240/177</p> <p style="padding-left: 20px;">at rpm: 6250</p> <p>Engine type: Six cylinder Otto engine</p> <p>Compression ratio: 11.3 : 1</p> <p>Fuel grade: Super plus or super lead-free petrol,</p> <p style="padding-left: 20px;">Minimum 95 RON</p>

<p>Environmental Information</p> <p>3 door</p> <p>Official fuel consumption according to EU Directive 99/94, mpg/ltr per 100 km</p> <p style="padding-left: 20px;">Urban: 17.2/16.4</p> <p style="padding-left: 20px;">Extra-urban: 32.8/8.6</p> <p style="padding-left: 20px;">Combined: 24.6/11.5</p> <p>Official CO₂ emission, g/km*: 276</p> <p>Noise, dB: 75</p> <p>Maximum VED band: E</p>
--

<p>5 door</p> <p>Official fuel consumption according to EU Directive 99/94, mpg/ltr per 100 km</p> <p style="padding-left: 20px;">Urban: 17.1/16.5</p> <p style="padding-left: 20px;">Extra-urban: 32.5/8.7</p> <p style="padding-left: 20px;">Combined: 24.4/11.6</p> <p>Official CO₂ emission, g/km*: 278</p> <p>Noise, dB: 75</p> <p>Maximum VED band: E</p>
--

<p>3 door</p> <p>Basic recommended price: £18,459.57</p> <p>VAT: £3,230.43</p> <p>Total retail recommended price: £21,690.00</p> <p>‘On the road’ retail recommended price: £22,340.00</p>

<p>5 door</p> <p>Basic recommended price: £18,987.24</p> <p>VAT: £3,322.76</p> <p>Total retail recommended price: £22,310.00</p> <p>‘On the road’ retail recommended price: £22,960.00</p>

<p>VED Band ‘E’ – Petrol</p> <p>The ‘On the road’ retail recommended prices for petrol engines with a CO₂ emission figure above 185 g/km include the following:-</p> <p>Delivery to retailer: £380.00</p> <p>Number plates: £20.00</p> <p>VAT: £70.00</p> <p>Vehicle excise duty: £155.00</p> <p>Vehicle first registration fee: £25.00</p> <p>Total: £650.00</p>
--

[†] Figures are calculated in accordance with manufacturer’s criteria.

* CO₂ Information.

The weight of a vehicle will influence the level of CO₂ emission it produces; as a result, vehicles with higher levels of specification and factory-fitted options may emit higher levels of CO₂. The CO₂ figure quoted for each vehicle is the maximum possible. The unladen weight of the vehicle is calculated by range at the time of manufacture and the maximum possible CO₂ emission for that weight range is applied according to the Council Directive 80/1268EEC as amended by Commission Directive 1999/100/EC on the approximation of the laws of the member states relating to the carbon dioxide emissions and the fuel consumption of motor vehicles.

Specifications subject to change without notice. Information correct as at 1 March 2003. Please note: all data subject to manufacturer’s tolerances.

Standard Equipment.

<p>3-year/60,000 miles warranty (whichever is soonest)</p> <p>3-year paintwork warranty</p> <p>12-year body protection warranty</p> <p>Volkswagen Assistance**</p>
--

<p>ABS (Anti-lock Braking System) with EBD (Electronic Brake-pressure Distribution)</p> <p>Air conditioning, electronic climate control</p> <p>Alloy wheels, four 7½ x 18 ‘Aristo’ with 225/40 ZR18 tyres and anti-theft wheel bolts</p> <p>Aluminium pedals with R32 logo – clutch, brake and accelerator</p> <p>Body-coloured bumpers, side bump strips, door mirrors and door handles</p> <p>Boot load lashing points</p> <p>Brake pad wear indicator</p> <p>Breakdown kit</p> <p>Brushed aluminium trims on centre console, ashtray lid and interior door handles</p> <p>CD autochanger, 6 disc, dash-mounted‡</p> <p>Chrome exhaust tailpipes x 2, right and left</p> <p>Chrome pack</p> <p>Cup holders, front and rear</p> <p>Darkened rear lenses</p> <p>Decorative aluminium inserts</p> <p>Driver’s and front passenger’s front, side and curtain airbags</p> <p>Dust and pollen filter</p> <p>Easy entry front seats</p> <p>Electrically heated and adjustable door mirrors</p> <p>Electric windows, front (with one-touch operation)</p> <p>Electronic engine immobiliser</p> <p>ESP (Electronic Stabilisation Programme) – includes EDL (Electronic Differential Lock) and ASR (Traction Control)</p> <p>Four wheel drive</p> <p>Front seat belt tensioners</p>

Factory-Fitted Options.

<p>Cruise control</p> <p style="padding-left: 20px;">Basic: £153.19 VAT: £26.81 Total: £180.00</p> <p>‘Delta’ combined radio and single CD player including DSP‡</p> <p style="padding-left: 20px;">Basic: £191.49 VAT: £33.51 Total: £225.00</p> <p>Leather/Alcantara upholstery – Grey</p> <p style="padding-left: 20px;">Basic: £1,021.28 VAT: £178.72 Total: £1,200.00</p>
--

<p>Leather upholstery – Black</p> <p style="padding-left: 20px;">Basic: £1,617.02 VAT: £282.98 Total: £1,900.00</p> <p>Navigation/radio system with 5" colour screen‡</p> <p style="padding-left: 20px;">Basic: £2,127.66 VAT: £372.34 Total: £2,500.00</p> <p>Sunroof – electric, glass</p> <p style="padding-left: 20px;">Basic: £391.49 VAT: £68.51 Total: £460.00</p>

** Volkswagen Warranties.

Every new car is registered for Volkswagen Assistance for 1 year. This provides vehicle recovery in the unlikely event of a breakdown (subject to conditions). Volkswagen Assistance can also be purchased for subsequent years. For full details, please contact your Volkswagen retailer. For full details of all Volkswagen Warranties, please contact your Volkswagen retailer.

‡ ‘Delta’ radio, navigation system and dash-mounted 6 CD autochanger cannot be specified in conjunction with each other. For full details of the factory-fitted options available, please consult your Volkswagen retailer. Factory-fitted options are subject to availability and extended delivery.

<p>Fully galvanised body</p> <p>Gas discharge (Xenon) dipped beam with headlight washers and automatic height adjustment</p> <p>Height and reach adjustable steering column</p> <p>Honeycomb front air intake</p> <p>Illuminated sun visor mirrors</p> <p>Isofix child seat preparation</p> <p>‘König’ height-adjustable front sports seats, heated with integrated head restraints</p> <p>Leather gear lever gaiter</p> <p>Leather rimmed steering wheel with R32 logo</p> <p>Leatherette handbrake grip</p> <p>Lowered suspension</p> <p>Low washer fluid warning light</p> <p>Metallic or Pearl Effect paint</p> <p>Multifunction computer</p> <p>Power-assisted steering</p> <p>‘R32’ logo on radiator grille and at rear (instead of Golf logo)</p> <p>Radio/cassette ‘Gamma’ with RDS, 8 speakers and roof aerial</p> <p>Rain sensor and automatic dimming interior rear-view mirror</p> <p>Rear head restraints, 2 outer</p> <p>Remote central locking and alarm with interior protection</p> <p>Roof spoiler, rear</p> <p>Rotating lock barrels</p> <p>Sills, widened with R32 logo</p> <p>Split folding rear seats</p> <p>Textile floor mats, front and rear with R32 logo</p> <p>Tinted glass</p> <p>Two tone horn</p> <p>Upholstery – ‘Monte Carlo’ cloth</p> <p>Ventilated disc brakes front and rear with blue calipers</p> <p>4MOTION gear knob</p> <p>6 speed manual gearbox</p>

Exterior Paintwork.



Tornado Red (G2)



Reflex Silver Metallic (8E)



Moonlight Blue Pearl Effect (C7)



Grey Anthracite Pearl Effect (F8)



Diamond Black Pearl Effect (Z4)

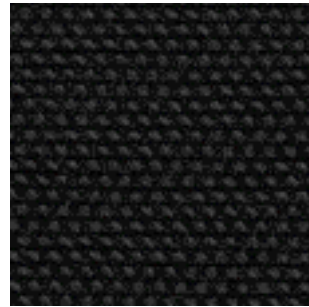


Deep Blue Pearl Effect (6X)¹⁾

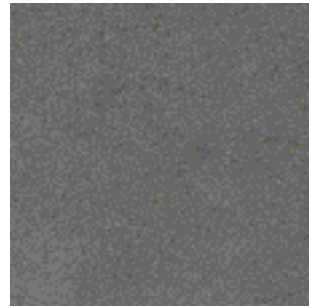


Indigo Blue Pearl Effect (7D)

Upholstery.



'Monte Carlo' Anthracite (GL)
Carpets: Black
Dashboard: Black/Black



Flannel Grey
Alcantara/Leather (JZ)²⁾
Carpets: Black
Dashboard: Black/Black



Black Leather (YZ)²⁾
Carpets: Black
Dashboard: Black/Black



Some illustrations in this brochure do not necessarily reflect UK specifications and may not be available. In particular, controls and some items of equipment are positioned differently for the UK.

The specifications contained in this brochure are for information purposes only and are subject to change.

If you require any specific feature, you must consult your Volkswagen retailer who is regularly updated with any change in specification. Please check model availability and full specification details with your Volkswagen retailer prior to ordering.

Paintwork and Upholstery Footnotes

¹⁾ Please contact your Volkswagen retailer for availability.

²⁾ Optional at extra cost.

Please note: the print process does not allow for exact reproduction of the paint and upholstery colours, for further details please contact your Volkswagen retailer.