

The information and images in this brochure are based on the current technical data when going to print. The equipment shown is factory fitted or available as an option at extra cost, depending on the model. Where a feature is described as an option it should be assumed that it is at extra cost unless specifically stated otherwise. There may be some feature combinations that are not available in the UK and some photography may feature left hand drive vehicles. As part of a policy of continuous specification improvement, Peugeot reserve the right to modify the technical equipment, options and colours at any time. For full specification ask your local Peugeot Dealer or click on www.peugeot.co.uk. Note that current print and photographic techniques do not allow us to faithfully reproduce the full depth and tone of the colours in this brochure. This brochure is designed to provide general product information and is not a contractual document or offer of sale. For current information please contact your authorised Peugeot Dealer. The details in this catalogue cannot be reproduced without the express authorisation of Peugeot.



The Peugeot | **206** | HATCHBACK and SW

Création BETC EURO RSCG - Édition Gutenberg On Line (5) - Automobiles Peugeot RC Paris B 552 144 503 - Imprimé en U.E. - GB - 05/04.



Issued by: Sales and Marketing, Peugeot Motor Company plc,
Aldermoor House, PO Box 227, Aldermoor Lane, Coventry CV3 1LT.

For details of HM Forces tax-free military sales contact:
Peugeot Export, 454-490 Mile End Road, London E1 4PE.
Telephone: 020 7791 9050
Email: peugeot.export@peugeotmail.co.uk

For all other enquiries please call 0845 200 1234
(calls will be charged at local rate, and may be
recorded for training or quality purposes).

www.peugeot.co.uk

May 2004
MCP 2215



Take a closer look at the 206



It's worth a second glance



Contents

- 10**
206 style
- 12**
206 on-board technology
- 14**
206 comfort and modularity
- 16**
206 SW
- 18**
206 dynamism
- 20**
206 safety
- 22**
The 206 family
- 36**
206 colours
- 38**
206 accessories

But what's behind the sleek lines?



And why is it so popular?





We've been thinking about it



Nowadays, with fashions changing faster than traffic lights, and Andy Warhol's claim about fifteen minutes of fame being taken almost literally, a car that's consistently popular is bound to be intriguing. With its perfect proportions, the 206 has established itself as a benchmark.

Its smooth lines, its broad, curving windscreen and its feline appearance, reveal an extraordinary personality. The interior lives up to your expectations as well; open lines, brightness and an exceptional finish are guaranteed to make you feel good every time you drive.

Keeping in touch



The RT3 telematics system* is an incredible feat of technology - the way it allows you to keep in touch will change the way you think of your car. Because of its navigation and guidance systems, and the access it gives you to emergency and assistance services, the RT3 vastly improves the quality of the time you spend behind the wheel. It might look like a normal car radio, but the RT3 also has a CD player, GPS navigation and hands-free phone, all built-in and all controlled by your voice.

*Optional at extra cost on SE and above.



- **Listening to the radio:** the RT3 is, first and foremost, a high quality radio/CD player. If you want to change your preset station just say "memory" and the number of the button where the radio station is stored.
- **To make a phone call:** the RT3 is a dual band phone, so you can make and receive calls, or texts, even when you're abroad. There are fingertip controls on the steering column or you can just say "call home", for example, and the built-in microphone will give you absolutely clear instructions.

- **To choose a route:** the GPS function takes you to your destination junction by junction and street by street. All you have to do is follow the route on the dashboard display. Other functions, such as the fast access to the Peugeot Customer Contact Centre and local breakdown assistance make sure that you're more in touch with us than ever before.



206 comfort and modularity

Make yourself comfortable

Spacious, intelligent, modular: comfort in the 206 finds expression everywhere

- Air quality is ensured by a filter system and digital air conditioning with climate control*. Combined with an athermic windscreen, they make sure that you always have the temperature you prefer.
- The driver enjoys a height-adjustable seat and steering wheel, trip computer*, rain sensor* and automatic headlights*.

- "Follow-me-home" lights will stay on for 45 seconds after the ignition is switched off, providing light to help you to your front door.
- The rear seats can be split 2/3 / 1/3.
- Add to this an electronic immobiliser, and comfort takes on a whole new meaning.

* Dependent on model



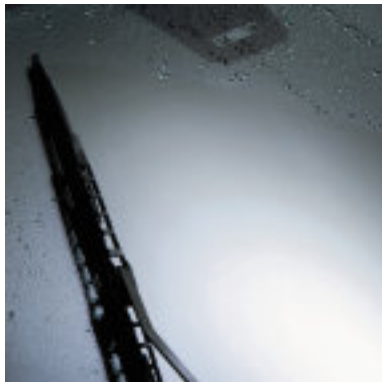
Trip Computer* displays information about fuel consumption, how far you've travelled, how far to the next fill-up and average speed.



The 206 can be transformed into a virtual concert hall.

The radio/CD, with remote controls on the steering column, is combined with the JBL audio system. It's tailor-made for the passenger compartment of the 206 and 206 SWV, with 8 speakers, in 6 locations, all controlled independently by a multifunction electronic unit: everyone in the car can enjoy the best possible sound.

* Dependent on model



Automatic rain sensing front wipers*

A rain sensor automatically triggers the windscreen wipers if it starts to rain, and if it gets heavier, they get faster.



Inside the boot, lots of practical details offer loads of storage options. Two elastic straps and two nets can be used to store fragile objects and stop shopping moving around, while two side hooks can also secure loose shopping bags. For added convenience, a 12-volt socket means you can recharge portables or games consoles.



Intelligent design

Innovative design gives the 206 SW a boot with impressive capacity. And this is the clever bit; the rear window can open independently from the tailgate for quick and easy loading, either by remote control or by simply pressing an additional button on the tailgate. The boot has a volume of 313 dm³, which can be increased to 480 dm³ by simply folding down the 2/3/1/3 split rear seat.

You'll find the 206 SW particularly generous on storage space. Folding down the rear seat provides a flat surface that is perfectly flush with the floor of the boot. The low loading threshold and the rigid floor rails help when loading and unloading heavy or bulky objects. In addition, a rear load cover provides added security.

Incisive and responsive



The 206 demonstrates all of Peugeot's renown for roadholding and fast response. It's sure-footed at any speed, thanks to McPherson type front suspension and transverse torsion bars on the rear trailing arms.

• There are five petrol engines: 1.1 8v, 1.4 8v or 16v, 1.6 16v and 2.0 16v and three diesel choices: 1.4 HDi 70, 2.0 HDi 90 and HDi 110 FAP.

All models have the crisp Peugeot 5-speed gearbox. And the 1.4 8v and 1.6 16v petrol engines are also available with the electronically managed Tiptronic gearbox. It combines a manual gearbox with an automatic, and gives you the best of both. Choose the sequential (manual) mode and the gear you select is held for as long as you want; only over-revving or the possibility of stalling initiates an automatic gear change.

New HDi 110 FAP engine*

An engine that takes the diesel revolution one step further. Equipped with a particle emission filter, this all-aluminium engine cuts fuel consumption while reducing

particle emissions to negligible amounts. More economical and cleaner, it is also more efficient. With a 16v HDi engine, 110bhp and excellent 180 lb ft torque a great performance is assured**.



Sequential automatic gearbox

The Tiptronic System Porsche automatic gearbox has 4 speeds and is available with the 1.4 8v and 1.6 16v engines. In automatic mode, the gearbox adapts to your driving style and road conditions, thanks to

its ability to recognise inclines and bends. You can choose from three programmes; Auto, for normal driving, Sport for more dynamic handling, and Snow, which reduces the risk of skidding on slippery roads.

* Available on the GTi
** For details of performance and economy please ask your local Peugeot Dealer or click on www.peugeot.co.uk



206 safety

Active and passive safety



6 Airbags

Providing optimum protection is one of Peugeot's priorities. In the event of an accident:

- On all models two front airbags inflate at a speed in relation to the intensity of impact.

- On XSi and above two side airbags and two curtain airbags protect the head and chest.
- The two curtain airbags above the side windows are deployed if there's a collision, to protect the heads of the front passengers, as well as those in the back seats.

Safety belts

The front safety belts are set at pyrotechnic pre-tension and integrate a force limiter. If you're involved in an accident, this device 'pins' the occupants to their seats. The rear belts have three anchoring points to improve the safety and comfort of the passengers even more.

Automatic headlights on*

The automatic headlights provide visibility where it's needed. At night time or in dimly lit areas, a sensor triggers the headlight switch automatically. Then the lights switch themselves off again when it gets bright enough.

* Standard on the SE and above

Automatic hazard lights*

If you brake suddenly, the hazard lights switch on automatically allowing you to concentrate on the road ahead. Then they switch off when you accelerate away.

* Standard on the Style and above.

Isofix system

The ISOFIX system is the safest and most efficient way to install a child seat. That's why it's fitted to the front passenger and rear seats* of your 206. You can fit two child seats side by side safely and easily, without using the seat belts. Points are also provided on the front passenger seat along with an airbag deactivation switch, which must be used when installing a rear-facing child seat.

* Not on GTi 180

Braking systems

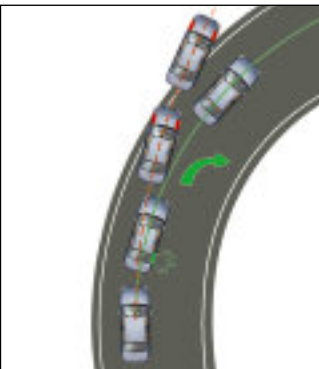
The 206 has a sophisticated braking system, including Anti-lock brakes (ABS) with Electronic Brake Force Distribution (EBFD), Emergency Brake Assist (EBA) and Electronic Stability Programme (ESP)*.

The ABS reduces the risk of the wheels locking when on slippery surfaces and significantly shortens the braking distance. The EBA gives assistance with rapid braking and emergency stopping. Electronic Stability Programme (ESP) works in conjunction with:

- EBFD which electronically distributes the braking pressure on all four wheels in order to improve vehicle control.

- ABS
- Traction Control (ASR) which prevents spinning of the wheels.

* Standard on the GTi and GTi 180. Option at extra cost on the XSi.



The 206 family

In any family,
there are always rivals!

QUIKSILVER 

STYLE



S



XSi



SE



GTi



GTi 180





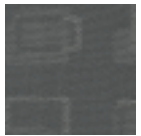
206 STYLE

The clear headlights, one colour tail lights, honeycomb grille and subtly rounded bodyline make the 206 one of the most distinctive cars on the road. The Style comes with a 1.1 litre petrol or a 1.4 HDi diesel engine. Internally, the 3 or 5 door hatchback has electric windows, 60/40 split folding rear seat, remote control central locking and depending on body colour either blue or light grey Cooldouce cloth trim.

- Key features**
- ABS with Electronic Brake Force Distribution (EBFD) and Emergency Brake Assist (EBA)
 - Electric front windows
 - Remote control central locking
 - Sports front seats
 - 60/40 split folding rear seat with three 3-point seat belts and 3 rear headrests
 - SMART driver and front passenger airbags (with passenger airbag deactivate switch)
 - Remote control radio/cassette player
 - Power steering
 - Height-adjustable steering wheel and driver's seat
 - Location of car via plip key
 - Transponder immobiliser
 - Automatic door unlocking in the event of an accident
 - "Follow-me-home" headlights



Blue
Cooldouce cloth
Black ambience



Light Grey
Cooldouce cloth
Light grey ambience



The 206 family



206 S

With its dynamic lines, the 206 S is visually seductive, especially as it sports a honeycomb grille and interior eye-catching details such as silver grey dials and aluminium insert to the gear knob. It also offers you great value for money with features over and above the Style that include air-conditioning (optional on 1.1), a radio/CD player and body coloured, electric and heated door mirrors. The S is also available with grey or red Zagros cloth trim as a 3 or 5 door hatchback. And you can choose from the 1.1 8v manual, 1.4 8v manual or Tiptronic petrol engines, or the 1.4 HDi 70 and 2.0 HDi 90 diesel engines.

Key features

- Air conditioning (optional on 1.1)
- Remote control radio/CD player
- ABS with Electronic Brake Force Distribution (EBFD) and Emergency Brake Assist (EBA)
- Electric front windows
- Electric, heated door mirrors
- SMART driver and front passenger airbags (with passenger airbag deactivate switch)
- Remote control central locking
- 60/40 split folding rear seat with three 3-point seat belts and 3 rear headrests
- Height-adjustable steering wheel and driver's seat
- Location of car via plip key
- Body coloured door mirrors, handles and rear number plate housing
- Silver grey dials and aluminium insert to the gear knob
- "Follow-me-home" headlights



Red/Black Zagros cloth
Black ambience

Grey/Black Zagros cloth
Black ambience



The 206 family

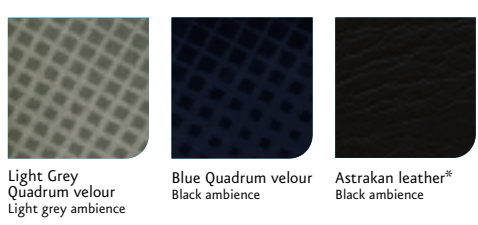


206 SE

Whatever the needs of you or your family, the 206 SE will live up to your expectations. Over and above the S, the SE benefits from digital air conditioning with climate control, automatic front wipers, automatic headlights on and front fog lights. The interior boasts stylish black dials with a chrome surround, aluminium interior door handles, handbrake button and glove box handle, a leather-trimmed steering wheel and convenient

features such as a map reading light and a boot net. To spice it up even more this model is also available with an optional Luxury Pack, consisting of 14" alloy wheels, CD autochanger, alarm and deadlocks. You can choose a 3 door SE with the 1.4 16v manual, the 1.4 8v Tiptronic or the 1.4 HDi 70 engine. On the 5 door version, you have the added choice of the 1.6 16v manual or Tiptronic or a 2.0 HDi 90 engine.

- Key features**
- Digital air conditioning with climate control and athermic windscreen
 - Front fog lights
 - Automatic rain sensing front wipers and automatic headlights on
 - Remote control radio/CD player
 - ABS with Electronic Brake Force Distribution (EBFD) and Emergency Brake Assist (EBA)
 - SMART driver and front passenger airbags (with passenger airbag deactivate switch)
 - Electric, heated door mirrors
 - Remote control central locking
 - Electric front and rear (on 5 dr models) windows
 - Leather-trimmed steering wheel and gear knob



*Leather trim is an option at extra cost



The 206 family



QUIKSILVER 

The 206 Quiksilver is your perfect means of escape – a car developed to take you as far as your imagination allows. A unique combination of Peugeot's expertise and the "go-hard" attitude of the leading surf and snow brand, the 206 Quiksilver is more than just a way to get from A to B. Distinctive aluminium metallic paintwork and aluminium pedals, gear knob and fuel filler cap all make sure that it's nothing less than pure attitude on the move. Combine that attitude with the 1.4 16v 90 engine, and there's nothing to stop you making a clean getaway.

Key features

- 1.4 16v 90 petrol engine with Variable Valve Timing
- Quiksilver seat trim and metallic paint
- Quiksilver mats and boot tray
- Sports front seats, leather steering wheel and aluminium gear knob and pedals
- Aluminium fuel filler cap
- Ultrasonic alarm with transponder immobiliser and deadlocks
- ABS with Electronic Brake Force Distribution (EBFD) and Emergency Brake Assist (EBA)
- Air conditioning
- Remote control radio/CD player
- Automatic rain sensing front wipers and automatic headlights on
- Body coloured, electric, heated door mirrors
- Body coloured door handles, side rubbing strips, bumper inserts and number plate housing
- Electric front windows
- Trip computer



The 206 family



- Key features**
- 15" alloy wheels
 - Side and curtain airbags
 - Remote control radio/CD player
 - ABS with Electronic Brake Force Distribution (EBFD) and Emergency Brake Assist (EBA)
 - Automatic rain sensing front wipers and automatic headlights on
 - Air conditioning
 - Ultrasonic alarm with transponder immobiliser and deadlocks
 - Body coloured, electric, heated door mirrors
 - Body coloured door handles, side rubbing strips, bumper inserts and number plate housing
 - Leather-trimmed steering wheel and gear knob
 - Sports front wings and sports front seat
 - Trip computer

206 XSi

This car will appeal to everyone who has a taste for dynamism, but who nevertheless appreciates a high level of comfort. With its body-coloured sports bumper inserts and side rubbing strips, chrome surround to the honeycomb grille, chromed exhaust pipe, 15" Sirocco alloy wheels and leather trimmed steering wheel, it displays its sporting credentials proudly.

The 206 XSi has side and curtain airbags for more complete protection, the driver's seat is height-adjustable and the interior is upholstered in black and grey Merlin cloth trim. In terms of engines, the 206 XSi has a 1.6 16v engine (manual or Tiptronic), or a 2.0 HDi 90 engine. Both have Electronic Stability Programme (ESP) as an option which gives you improved roadholding and better control.



Grey/Black Merlin cloth Black ambience
Astrakan/Salsa Red leather* Black ambience



Astrakan leather* (available later in the year) Black ambience
Lama leather* (available later in the year)

* Leather trim is an option at extra cost.



206 GTi

The GTi is a car with a purpose – its sports front wings, 16" Ouragan alloys, aluminium fuel filler cap and chrome exhaust pipe all point towards the fact that this is a car for people who love driving. Turn the key and you'll have proof; its performance* is matched only by its braking system. Ventilated front disc brakes, ESP (Electronic Stability Programme), ABS with EBFD and EBA all make sure

that, although the 206 GTi is powerful, you're the one who's always in control. And now you can choose from a diesel HDi derivative as well as the powerful 2.0 16v petrol engine. The new HDi 110 combines great performance* at 180 lb ft of torque with great fuel economy* – to give you the best of both worlds.

* For details of performance and economy please ask your local Peugeot Dealer or click on www.peugeot.co.uk



Astrakan leather/Black Alcantara with Zagros cloth Black ambience
Astrakan leather* Black ambience
Astrakan/Salsa Red leather* Black ambience
Lama leather* (available later in the year)

* Leather trim is an option at extra cost.

- Key features**
- 2.0 16v petrol engine or HDi 110 diesel engine
 - 16" alloy wheels
 - ESP (Electronic Stability Programme)
 - Ultrasonic alarm and transponder immobiliser and deadlocks
 - Digital air conditioning with climate control
 - Remote control radio/CD with CD autochanger
 - Leather, Alcantara and Zagros cloth trim
 - ABS with Electronic Brake Force Distribution (EBFD) and Emergency Brake Assist (EBA)
 - Automatic rain sensing front wipers and automatic headlights on
 - Speed related power assisted steering
 - SMART driver and front passenger airbags (with passenger airbag deactivate switch), side and curtain airbags
 - Trip computer





206 GTi 180



The 206 GTi 180 is a driver's car, developed directly from the wealth of experience that we've gained in the World Rally Championship to give you a car with a totally unique character. The Variable Valve Timing system and dual air intake develop a sporty exhaust note and a torque that's way beyond anything you would expect, while the uprated front

and rear suspension and speed related power steering contribute to roadholding that is truly tenacious. And its looks have the same dynamic appeal; Atlantis 17" alloy wheels, chromed dual exhaust, a rear spoiler, body-hugging racing style front seats, and leather overstitched instrument binnacle – the 206 GTi 180 has it all.



- Key features**
- 0-62mph in 7.4 seconds
 - Top speed 137 mph (where legal)
 - Variable Valve Timing
 - ESP (Electronic Stability Programme)
 - 17" alloy wheels
 - Leather, Alcantara and Apicula mesh racing seats
 - Double chrome exhaust extension and a rear spoiler
 - Digital air conditioning with climate control
 - Remote control radio/CD with CD autochanger
 - Front, side and curtain airbags
 - ABS with Electronic Brake Force Distribution (EBFD) and Emergency Brake Assist (EBA)



206 colours

Solid Colours



Bianca White

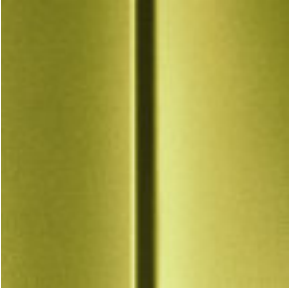


Flamenco Red



Indigo Blue

Metallic Colours*



Sahara Yellow



Aluminium



Mercury Grey



Lunar Mist



Moonstone



Amazon Green

Pearlescent Colours*



China Blue



Diablo Red



Aegean Blue



Onyx Black

* Metallic or pearlescent paint is an option at extra cost.

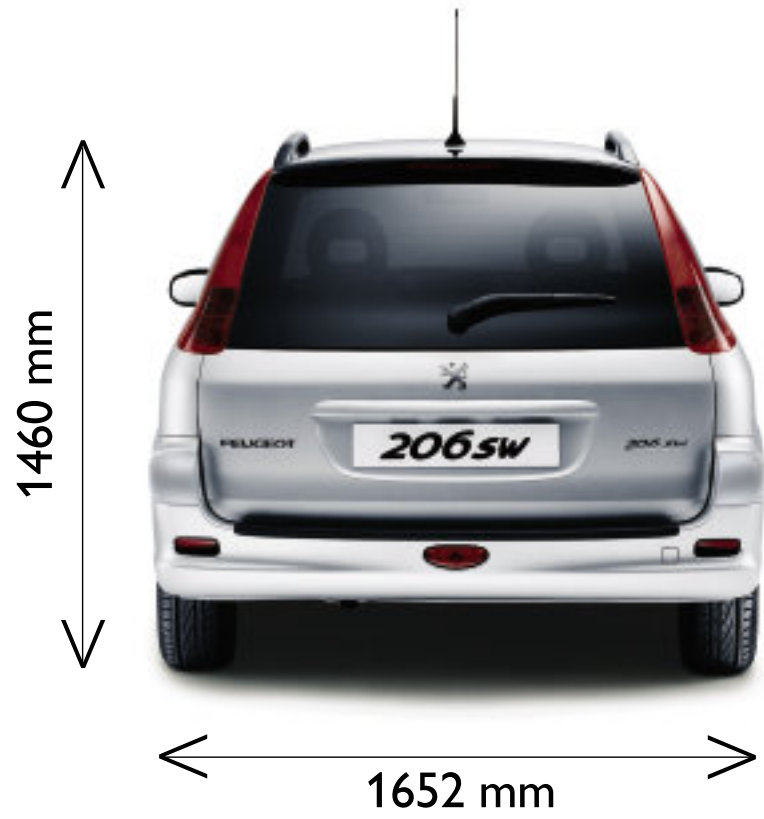
Wheel trims

Alloy wheels

| | Cuba 14" | Texas 15" | Bohemian 14" | Tornado 14" | Sirocco 15" | Ouragan 16" | Atlantis 17" |
|------------|----------|-----------|--------------|-------------|-------------|-------------|--------------|
| Style | ■ | | | | | | |
| S | ■ | | ○* | ○* | | | |
| SE | ■ | | ○* | ○* | | | |
| Quiksilver | | ■ | | | ○ | | |
| XSi | | | | | ■ | | |
| GTi | | | | | | ■ | |
| GTi 180 | | | | | | | ■ |

- Standard
- Option
- * Option, according to engine

Dimensions



206
 Height: 1.426 m to 1.432 m
 Width: 1.652 m
 Length: 3.835 m
 Wheelbase: 2.442 m

206 SW
 Height: 1.426 m to 1.460 m
 Width: 1.652 m
 Length: 4.028 m
 Wheelbase: 2.442 m

Rear Spoiler

Developed by the Peugeot design studio to complement the original vehicle styling, the 206 rear spoiler adds that extra sporting touch.



Tilt and Slide Sunroof

This sunroof can be tilted up or can slide all the way back for a real open-air feeling.



Twin Headlight Conversion

Sets the 206 out from the crowd whilst retaining all the original adjustment features.



Sports Upper and Lower Grille

Adds that sporty aggressive look to the front of the car.



Sports Rear Light*

Complete the sports pack with these truly distinctive rear lights.

*Hatchback models only.

The Peugeot Customer Promise

When you buy a new Peugeot vehicle from a Peugeot Dealer in the UK and entrust your vehicle to one of them for servicing or repair, they promise:

to give you the best people, with the best training and diagnostic tools, original equipment Peugeot parts and the best aftersales backup, all at a competitive price.



Peugeot Peace of Mind

Peugeot vehicles are designed and manufactured to give you worry-free motoring and peace of mind. As a Peugeot owner you are entitled to a comprehensive range of customer care services from your Peugeot Dealer who has the expertise to maintain your Peugeot to its peak performance.

Peugeot Warranties
• 3 Years of Warranty:

In addition to the 2 year unlimited mileage manufacturer's Warranty, all vehicles first registered in the UK and purchased from a UK Peugeot Dealer benefit from a free optional additional 1 year of Warranty provided by the Peugeot Dealer network in the UK. This additional Warranty carries a mileage limit of 60,000 miles (100,000 miles for Boxer models excluding Motorhomes and other converted vehicles) from first registration. The conditions of the additional 1 year Warranty are identical to those of the 2 year



Peugeot Assistance

For the first year of ownership you will automatically receive Peugeot Assistance cover for complete peace of mind. Additional Peugeot Assistance may be purchased for the second and third years. Operated by the RAC, it includes roadside assistance, vehicle recovery, free replacement vehicle or hotel accommodation and chauffeur provision in case of certain medical disabilities. Peugeot Assistance is available within the UK and Europe. Your local Peugeot Dealer has full details of terms and conditions.

Peugeot Service Care

Peugeot petrol engine vehicles need servicing every 20,000 miles (12,000 2.0 litre 180 bhp engines) or every 2 years. Drivers of HDi diesel versions also benefit from extended servicing with 12,000 miles (20,000 2.0 litre HDi 407 & Expert) or 2 year intervals. With less time spent in the maintenance bay and fewer service visits, Peugeot have passed on the benefits of technology in engine design and lubrication. In between scheduled services your Peugeot Dealer offers you a complementary intermediate visit (level check/top up) provided the appropriate,

previous full service has been carried out at an authorised Peugeot Dealership. In order to minimise the inconvenience associated with normal servicing, Peugeot UK Dealers promise to offer you the choice of:
- while you wait servicing with a timed appointment;
- or local vehicle collection from your home or place of work;
- or alternative transport to the railway station, home or place of work;
- or by arrangement, a hire car at a concessionary rate.
In addition they will aim to ensure that your vehicle is washed before it is returned.

Peugeot Insurance Centre

Peugeot Insurance has been specifically arranged for Peugeot owners. Offering discounted premiums and a fast and efficient claims service, it is another benefit of owning a Peugeot. Your Dealer can provide a proposal form for a free quotation or you can call the Peugeot Insurance Centre direct on 0845 200 1234 for a free quotation. Alternatively, contact: Peugeot Insurance Centre The Wharf Neville Street Leeds LS1 4AZ
Whatever Peugeot you drive, we guarantee you a competitive premium for your Motor Insurance. As a valued customer of Peugeot we'll make sure you get the very best premium quotation possible from Peugeot Insurance.