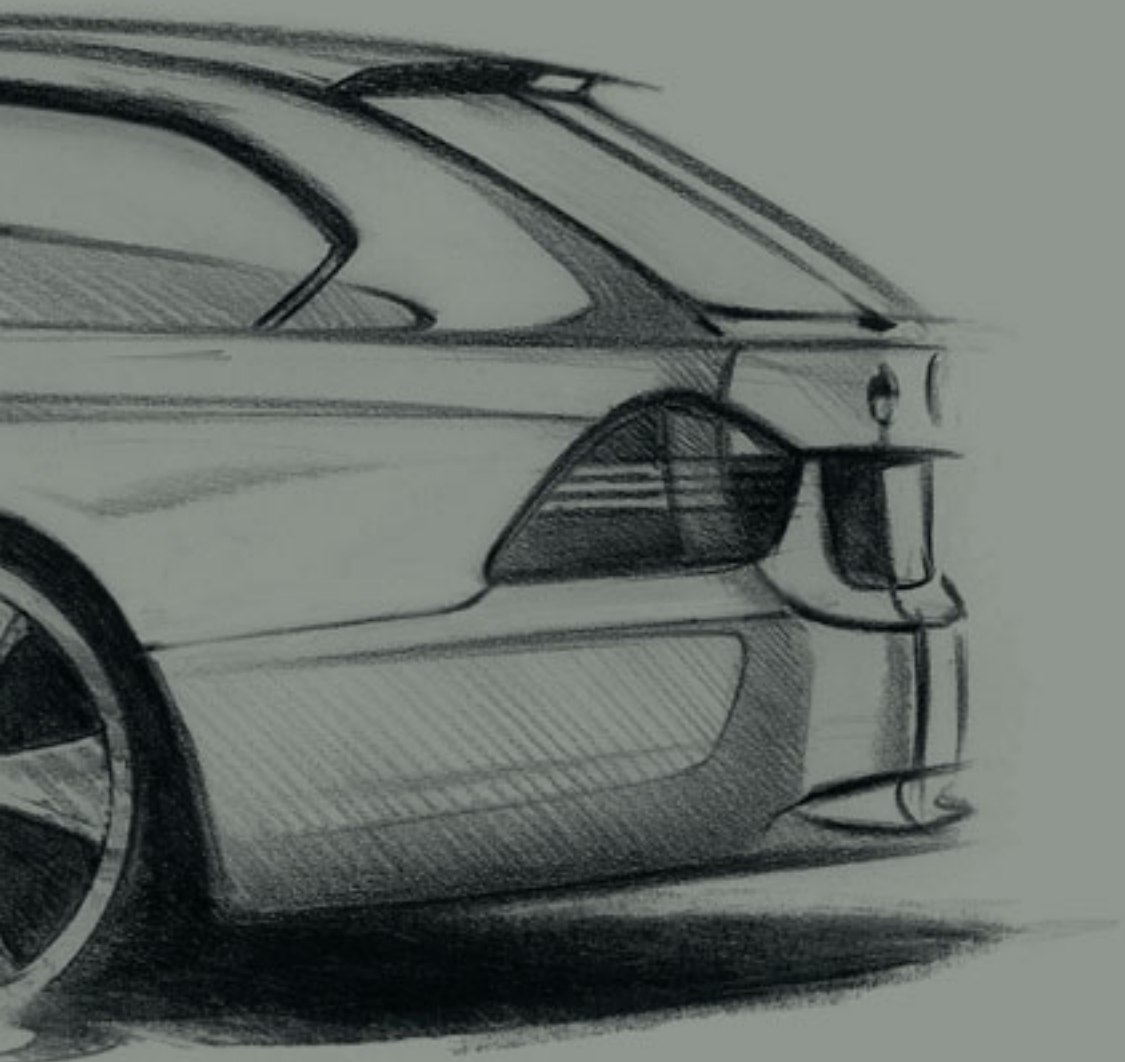


The new BMW
3 Series Touring

325i
320d



Sheer
Driving Pleasure



People have a natural sense of aesthetics. We recognise beauty straight away, be it by its proportions, its rhythm, or its symmetry. We simply know when something feels right. It's a judgement based on instinct, experience or perception. Or all three together – as in the case of the new BMW 3 Series Touring.



The following pages show a BMW 325i Touring in Arctic metallic, equipped with double-spoke 161 light-alloy wheels and a six-cylinder in-line petrol engine delivering 160 kW (218 hp) of power. For information on fuel consumption and CO₂ emissions please refer to page 31.



From a potentially unlimited number of possible designs, only one will do: the one that's the most beautiful.





Power alone is not enough.

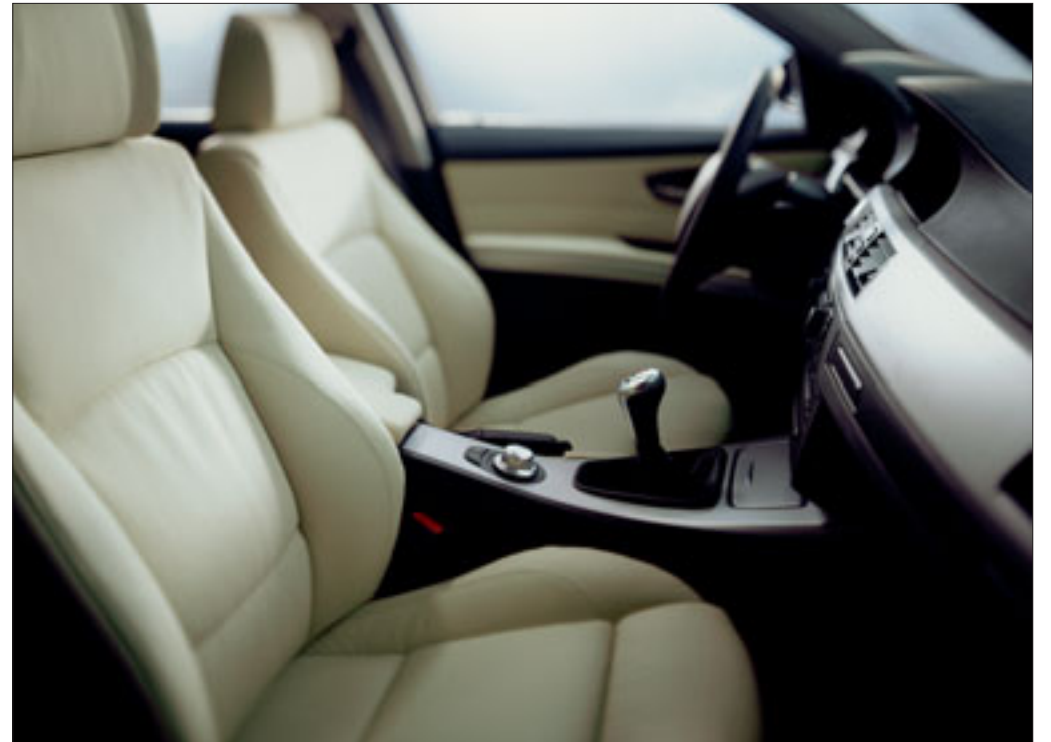


**We believe in equal front-rear weight distribution,
for perfectly balanced vehicle dynamics.**





An exciting automobile also needs something that allows you to relax.



**Beauty needs space to unfold in.
Luxurious, modern or sporty:**



**There's loads of room here.
But no room for compromise.**



Losing weight. It's an aspiration that BMW engineers subscribe to as well. They feel very passionate about engine design. In the new BMW 325i Touring, this has resulted in two things: lightweight engine design and Valvetronic. The use of aluminium and magnesium makes for a superb power-to-weight ratio. While the innovative Valvetronic system enables continuously variable valve lift control, which makes the six-cylinder in-line petrol engine more economical to run, especially in urban traffic and on small country roads. What's also very impressive about this engine is its spontaneous power development and revving ability,

up to a very sporty maximum of 7,000 rpm. Based on its 2.5-litre capacity, it develops a powerful 160 kW (218 hp)*, accelerating the car from 0 to 100 km/h in a mere 7.2 seconds, with a top speed of 243 km/h.



Petrol or diesel? It's a matter of taste. The four-cylinder in-line diesel engine in the new BMW 320d Touring epitomises all the virtues of a BMW powerplant: refinement, dynamics and economy. Its vibration-free running is due to two balance shafts driven by the crankshaft. With 120 kW (163 hp)* of power, the car accelerates from 0 to 100 km/h in just 8.6 seconds, with a top speed of 223 km/h. Its maximum torque of 340 Nm is available from just 2,000 rpm, ensuring tremendous shove even at low revs. And in case you wondered, its fuel efficiency is equally impressive. Apart from its economical fuel consumption of just

5.9 litres per 100 km, the new BMW 320d Touring complies with the stringent EU4 standard and can also be fitted with a diesel particle filter. Because the BMW 320d Touring supports retrofitting of a particle filter as standard.

* For detailed information on fuel consumption and CO₂ emissions please refer to page 31.



□ **Xenon headlights** (optional) for low and high beam ensure optimum road illumination at all times. The four parking light rings included in this equipment option and the slanted top edge of the headlight units make for an unmistakable look. The optional Adaptive Headlights turn into the bend when cornering.

□ **Panorama glass roof** with large opening/transparent area and slipstream deflector. Both glass sections can be angled by pressing a button. The front section can also be used

as a sliding roof and comes with an electric floating headliner, comfort opening/closing function and trap release.

□ **Roof rails** – matched harmoniously to the vehicle design, they provide a base for the multifunctional BMW roof rack unit, which allows for effortless and safe stowage of luggage, bikes, surfboards, etc.

□ The optional **light-alloy wheels with ellipsoid-spoke styling 162** and mixed tyres. Featuring 8 J x 18" wheels and 225/40 R 18 tyres at the front, with 8.5 J x 18" wheels and 255/35 R 18 tyres at the rear.

□ **Group aerial** available in conjunction with the optional mobile phone preparation with Bluetooth interface, car telephone preparation and the Navigation system Professional¹ with integrated Bluetooth mobile phone preparation. The dual-band aerial is painted in the car's body

colour and ensures optimum telephone reception.

■ **Rear window**, with separate opening function for quick and easy access to the luggage compartment.

¹Navigation system not available in all countries. Please consult your BMW partner.



The high-quality **instrument panel** (shown here without navigation system¹) with its classic circular display gauges redefines cockpit ergonomics. The upper part, up to the centre console, is inclined towards the driver and then slopes gently down to the passenger side, creating a generous sense of space.

□ **Fold-out floor liner** (available in conjunction with luggage compartment package). Comes with a front section that folds out to cover the bumper. Protects the interior and bumper from

scratches when loading or unloading larger items. It also helps keep the luggage compartment floor spotless.

□ The **Navigation system Professional¹** includes iDrive and holds data for all of Europe on a single DVD – displayed in the Control Display near the top of the instrument panel.

□ The **automatic air conditioning**, with automatic air re-circulation (AAR), fogging and solar sensors, separate temperature control for the driver and front passenger, air flow and air volume control as well as rear air vents in the centre console, quickly establishes the desired climatic conditions in the vehicle.

The **iDrive Controller** (included in the optional navigation system¹) provides a single point of access for a number of secondary functions, with an on-screen display for orientation.

The **Start/Stop** button is used to start and stop the engine.

¹Navigation system not available in all countries. Please consult your BMW partner.

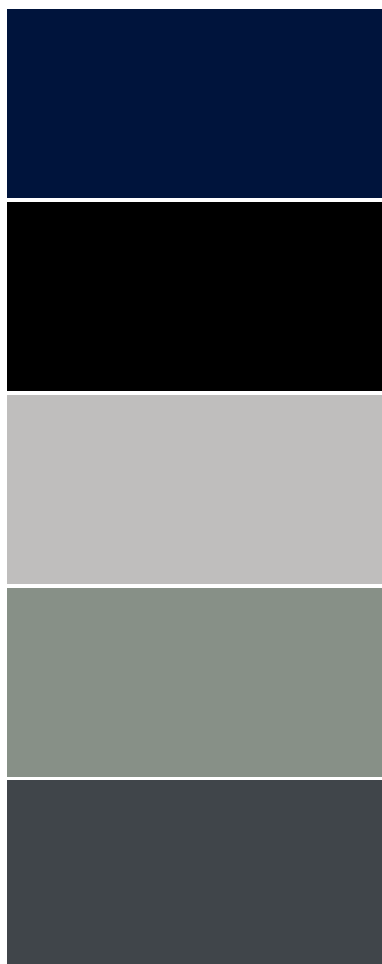
■ Standard equipment □ Optional equipment

Exterior colours



Non-metallic:

Black (668)
Alpine White (300)
Electric Red (438)



Metallic:

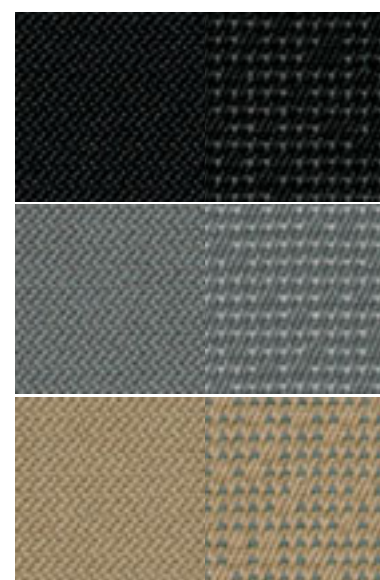
Monaco Blue (A35)
Black Sapphire (475)
Titanium Silver (354)
Arctic (A34)
Sparkling Graphite (A22)

Upholstery colours/materials



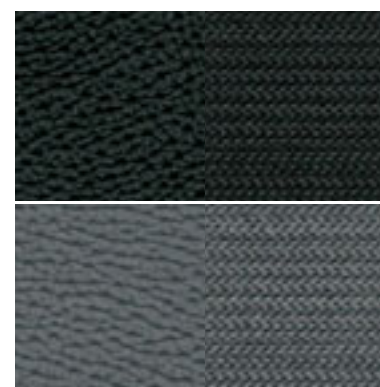
Dakota leather:

Black (LCSW)
Grey (LCAD)
Beige (LCB4)
Terra (LCB7)
Lemon (LCB8)



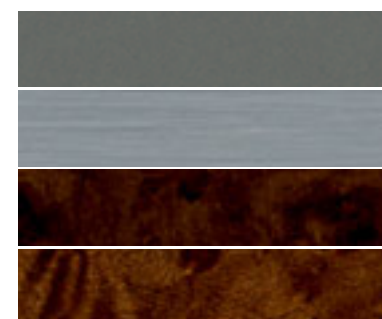
Fluid cloth:

Anthracite (ALAT)
Grey (ALAD)
Beige (ALB4)



Cloth/leather combination:

Anthracite (FFAT)
Quartz Grey (FFB6)



Interior trim:

Titanium matt (4AG), standard
Brushed Aluminium (4AD)
Burr Walnut wood trim (4AB)
Poplar Grain Natural wood trim (4AC)

Equipment

Safety	325i	320d
Adaptive Headlights (in conjunction with Xenon headlights)	<input type="checkbox"/>	<input type="checkbox"/>
Airbags:		
– Driver and front passenger airbags, front-to-rear head airbags, side airbags for driver and front passenger, seat occupation detector for front passenger airbag	■	■
Brake Force Display	■	■
Brakes:		
– Disc brakes at the front, inner-vented	■	■
– Disc brakes at the rear, inner-vented	■	■
Central locking with electronic immobiliser , crash sensor	■	■
Dynamic Stability Control (DSC, incl. ABS, CBC and Traction Mode DTC)	■	■
Dynamic Stability Control (DSC) with additional functions	■	–
Foglights with free-form reflectors, including heated screenwasher nozzles and exterior mirrors	■	<input type="checkbox"/>
Headlight washing system	<input type="checkbox"/>	<input type="checkbox"/>
Park Distance Control (PDC) front and rear, or rear only	<input type="checkbox"/>	<input type="checkbox"/>
Rain sensor with automatic driving lights control	<input type="checkbox"/>	<input type="checkbox"/>
Runflat indicator	■	■
Runflat tyres	■	■
Safety bodyshell:		
– Bumper system with aluminium impact absorber units at the front and steel impact absorber units at the rear, reversible up to 4 km/h, and special deformation elements at the front and rear designed to absorb impacts at speeds of up to 15 km/h	■	■
– Integrated side impact protection in doors	■	■
Seatbelts:		
– Ergonomic seatbelt system at the rear, with 3-point seatbelts for all rear seats	■	■
– Inertia-reel seatbelts at the front and for the two outer rear seats, with pyrotechnic belt tensioner and belt force limiter	■	■
Xenon headlights for low and high beam , including automatic headlight range control and four parking light rings	<input type="checkbox"/>	<input type="checkbox"/>
Engine	325i	320d
4-cylinder in-line diesel engine with four-valve technology	–	■
6-cylinder in-line petrol engine with four-valve technology	■	–
Common Rail technology	–	■
Diesel particle filter ¹	–	<input type="checkbox"/>
Double-VANOS	■	–
Emissions standard: EU4	■	■
Valvetronic	■	–
Transmission/suspension	325i	320d
6-speed automatic transmission with Steptronic	<input type="checkbox"/>	<input type="checkbox"/>
6-speed manual gearbox	■	■
Active Steering, including Servotronic	<input type="checkbox"/>	–
Double joint spring-strut front axle	■	■
Five-link rear suspension	■	■
Power steering	■	■
Sports suspension , lowered by 15 mm	<input type="checkbox"/>	<input type="checkbox"/>
Interior features	325i	320d
12 V socket in front armrest and in luggage compartment	■	■
Air conditioning (incl. microfilter)	■	■
Armrest at the front , moveable	<input type="checkbox"/>	<input type="checkbox"/>

■ Standard equipment Optional equipment – Not available

¹ The BMW 320d supports retrofitting of a particle filter.

Equipment

Interior features	325i	320d
Automatic air conditioning (including automatic air re-circulation, fogging and solar sensors and residual heat button)	<input type="checkbox"/>	<input type="checkbox"/>
Bag and umbrella holder in luggage compartment	■	■
Comfort access	<input type="checkbox"/>	<input type="checkbox"/>
Cruise Control, Active	<input type="checkbox"/>	–
Cruise control (operated via control stalk)	–	<input type="checkbox"/>
Cruise control with braking function	<input type="checkbox"/>	–
Instrument panel with circular speedometer and rev counter displays, as well as fuel gauge and fuel consumption display	■	■
Interior and exterior mirrors with automatic anti-glare function	<input type="checkbox"/>	<input type="checkbox"/>
Interior trim:		
– Brushed Aluminium	<input type="checkbox"/>	<input type="checkbox"/>
– Burr Walnut wood trim	<input type="checkbox"/>	<input type="checkbox"/>
– Poplar grain Natural wood trim	<input type="checkbox"/>	<input type="checkbox"/>
– Titanium matt	■	■
Luggage compartment package (includes luggage net, floor net, adjustable multi-segment underfloor storage bin, waterproof folding box, fold-out protective floor liner with integrated bumper cover)	<input type="checkbox"/>	<input type="checkbox"/>
Navigation system ¹ :		
– Business, with 6.5" colour monitor and arrow display, DVD drive, including iDrive Controller, 2-tuner reception	<input type="checkbox"/>	<input type="checkbox"/>
– Professional, with 8.8" colour monitor, arrow and map display, CD and DVD drive, including iDrive Controller, 2-tuner reception	<input type="checkbox"/>	<input type="checkbox"/>
– Professional, with integrated Bluetooth mobile phone preparation, telematics-enabled (including BMW Assist) ¹	<input type="checkbox"/>	<input type="checkbox"/>
On-board computer	■	■
Panorama glass roof , electric, with sliding and tilting functions, comfort opening and closing via car key	<input type="checkbox"/>	<input type="checkbox"/>
Radio/audio:		
– AUX/IN connection	■	■
– BMW Business CD radio	■	■
– BMW Professional radio	<input type="checkbox"/>	<input type="checkbox"/>
– CD changer (6 CDs)	<input type="checkbox"/>	<input type="checkbox"/>
– HiFi loudspeaker system	<input type="checkbox"/>	<input type="checkbox"/>
– HiFi System Professional LOGIC7	<input type="checkbox"/>	<input type="checkbox"/>
Rear centre armrest , including 2 cupholders	■	<input type="checkbox"/>
Seats/seat comfort:		
– Rear seats, with fold-down backrest (60/40)	■	■
– Seat adjustment, electric, with memory function for driver's seat	<input type="checkbox"/>	<input type="checkbox"/>
– Seat heating for driver and front passenger	<input type="checkbox"/>	<input type="checkbox"/>
– Sports seats for driver and front passenger, with manual adjustment, incl. electric backrest width adjustment	<input type="checkbox"/>	<input type="checkbox"/>
Ski bag	<input type="checkbox"/>	<input type="checkbox"/>
Start/Stop button	■	■
Steering wheels:		
– Leather sports steering wheel, three spokes, shift lever knob and handbrake lever handle in leather	<input type="checkbox"/>	<input type="checkbox"/>
– Leather steering wheel, three spokes, shift lever knob and handbrake lever handle in leather	<input type="checkbox"/>	<input type="checkbox"/>
– Multifunction buttons for steering wheel	<input type="checkbox"/>	<input type="checkbox"/>
– Standard steering wheel, three spokes	■	■
Storage compartment package (includes two fold-out cupholders at the front, storage compartment on driver's side and at the rear, two 12 V sockets in the rear and storage nets on front seatbacks)	<input type="checkbox"/>	<input type="checkbox"/>

¹ Navigation system and telematics services not available in all countries. Please consult your BMW partner.

■ Standard equipment Optional equipment – Not available

Equipment

Interior features	325i	320d
Telephones:		
– Car telephone preparation	<input type="checkbox"/>	<input type="checkbox"/>
– Mobile phone preparation, with Bluetooth interface	<input type="checkbox"/>	<input type="checkbox"/>
Underfloor storage compartment	■	■
Upholstery:		
– Fluid cloth	■	■
– Cloth/leather combination	<input type="checkbox"/>	<input type="checkbox"/>
– Dakota leather	<input type="checkbox"/>	<input type="checkbox"/>
Window lifts, electric, front and rear, pull/press switch with trap release and comfort opening/closing function	■	■
Exterior features	325i	320d
Exterior equipment in body colour (protruding door handles and roof trim strips)	■	<input type="checkbox"/>
Indicators in white (front)	■	■
Metallic paint	<input type="checkbox"/>	<input type="checkbox"/>
Ornamental front grille with vertical slats in Chrome and chrome surround	■	–
Protruding door handles and roof trim strips in Black	–	■
Rear window with separate opening function	■	■
Roof rails	<input type="checkbox"/>	<input type="checkbox"/>
Trailer tow hitch*	<input type="checkbox"/>	<input type="checkbox"/>
Wheels:		
– Light-alloy wheels double spoke 154, 7 J x 16", 205/55 R 16 tyres	■	■
– Light-alloy wheels double spoke 156, 7 J x 16", 205/55 R 16 tyres	<input type="checkbox"/>	<input type="checkbox"/>
– Light-alloy wheels star spoke 155, 7 J x 16", 225/50 R 16 tyres	<input type="checkbox"/>	<input type="checkbox"/>
– Light-alloy wheels star spoke 158, 8 J x 17", 225/45 R 17 tyres	<input type="checkbox"/>	<input type="checkbox"/>
– Light-alloy wheels star spoke 159, 8 J x 17", 225/45 R 17 tyres	<input type="checkbox"/>	<input type="checkbox"/>
– Light-alloy wheels radial spoke 160, 8 J x 17", 225/45 R 17 tyres	<input type="checkbox"/>	<input type="checkbox"/>
– Light-alloy wheels double spoke 161 with mixed tyres, 8 J x 17" with 225/45 R 17 tyres at the front, 8.5 J x 17" with 245/40 R 17 tyres at the rear	<input type="checkbox"/>	<input type="checkbox"/>
– Light-alloy wheels ellipsoid spoke 162 with mixed tyres, 8 J x 18" with 225/40 R 18 tyres at the front, 8.5 J x 18" with 255/35 R 18 tyres at the rear	<input type="checkbox"/>	<input type="checkbox"/>
– Runflat tyres	■	■

Technical data

Vehicle dimensions		325i	320d
Length	mm	4520	4520
Width	mm	1817	1817
Height	mm	1418 ¹	1418 ¹
Wheelbase	mm	2760	2760
Weight		325i	320d
Unladen, EU ²	kg	1545 [1575]	1580 [1595]
Permitted load	kg	540	540
Engine³		325i	320d
Cylinders/valves		6/4	4/4
Capacity	cc	2497	1995
Max. output	kW (hp)	160 (218)	120 (163)
Engine speed	rpm	6500	4000
Max. torque	Nm (lb-ft)	250 (184)	340 (251)
Engine speed	rpm	2750–4250	2000

■ Standard equipment □ Optional equipment – Not available

*Due to become available in the 3rd quarter of 2005.

Dimensions

Performance		325i	320d
Top speed	km/h	243 [240]	223 [218]
Acceleration 0–100 km/h	sec	7.2 [7.9]	8.6 [8.8]
Fuel consumption⁴		325i	320d
Urban	l/100 km	12.4 [13.2]	8.1 [9.4]
Extra-urban	l/100 km	6.4 [6.9]	4.6 [5.5]
Combined	l/100 km	8.6 [9.2]	5.9 [6.9]
CO ₂ emissions	g/km	208 [222]	158 [184]

The technical drawings show the following dimensions:

- Front view:** Overall width 1817 mm, wheelbase 2013 mm, front track 1500 mm, height 1418 mm.
- Rear view:** Overall width 1817 mm, wheelbase 1513 mm, height 1418 mm.
- Side view:** Wheelbase 2760 mm, front overhang 755 mm, rear overhang 1005 mm, total length 4520 mm. Interior dimensions show a front seat height of 978 mm and a rear seat height of 964 mm.
- Top view:** Front track 1459 mm, rear track 1455 mm.

¹ Height including roof aerial 1,442 mm, with roof railing 1,450 mm.

² The figure quoted includes a 90 per cent tank filling, 68 kg for the driver and 7 kg for luggage. Unladen weight applies to vehicles with standard equipment. Optional equipment may increase this figure.

³ The petrol engines are designed for RON 98 fuel. They may be run on fuel grades down to RON 91 with a decrease in engine power and an increase in fuel consumption.

⁴ All engines meet the EU4 emissions standard. Fuel consumption is determined in accordance with the ECE driving cycle made

up of approximately one third urban traffic and two thirds extra-urban driving (based on the distance covered). CO₂ emissions are measured in addition to fuel consumption.

Values in [] apply to vehicles with six-speed automatic transmission.

All dimensions in millimetres. Luggage compartment capacity (as per VDA standard): 460–1,385 litres (16.2–49.9 cu ft).

BMW recommends Castrol

More about BMW

www.bmw.com



Sheer
Driving Pleasure

The models illustrated in this brochure show the specifications for the **German** market. In part, they include optional equipment and accessories not fitted as standard. According to the specific requirements of other markets, alterations in models, standard and optional equipment, as described in this brochure, may occur. For precise information please contact your BMW partner. Subject to change in design and equipment. Subject to error.

© BMW AG, Munich/Germany. Not to be reproduced wholly or in part without written permission of BMW AG, Munich.

