

**BMW 3 Series  
Convertible**  
330Ci SE  
330Ci M Sport



**The Ultimate  
Driving Machine**



# The BMW 3 Series 330Ci Convertible

BMW UK



## Introduction

### BMW 3 Series Convertible

Every journey has a beginning. But when it's a journey in the 3 Series Convertible, it could be the beginning of a whole new experience. Drive with the roof down and you'll soon discover a unique sense of freedom. The range includes:

- A powerful four-cylinder Valvetronic engine
- Six-cylinder engines
- Striking exterior and interior design



## Pricing

Price shown as 'on the road'

330Ci SE	£33,585
330Ci M Sport	£35,560

## Company car tax

Car benefit charges for cars with an approved CO2 emissions figure

Model Description	CO2 Taxband	CO2 Emission
330Ci SE	32% (35%)	229.0 (244.0)
330Ci M Sport	32% (35%)	229.0 (244.0)

Company car tax information for automatic cars is shown in brackets.

## Equipment

Engine	330Ci SE	330Ci M Sport
Catalytic converter	■	■
Cylinder-specific anti-knock control	■	■
Digital Diesel Electronics (DDE)	—	—
Digital Motor Electronics (DME)	■	■
Double-VANOS	■	■
Four-cylinder in-line diesel engine, with Common Rail technology	—	—
Four-cylinder in-line petrol engine with four valve technology	—	—
Oxidising converter	—	—
Six-cylinder in-line diesel engine, with Common Rail technology	—	—
Six-cylinder in-line petrol engine with four valve technology	■	■
Twin exhaust pipe	■	■
VALVETRONIC engine management	—	—
<b>Transmission</b>		

■ Standard    £ Optional cost    — Not Available

# The BMW 3 Series 330Ci Convertible

BMW UK



## Equipment

Transmission	330Ci SE	330Ci M Sport
Five-Speed EH automatic transmission with Adaptive Gearbox System (AGS) and Steptronic control	£1,370	£1,370
Manual gearbox - Five-speed	—	—
Six-speed manual transmission	■	■
Six-speed Sequential Manual Gearbox (SMG)	£1,150	£1,150
<b>Wheels and chassis</b>		
16 Inch Cross spoke alloy wheel style 42	—	—
16 Inch Star spoke alloy wheel style 169	—	—
17 Inch Double Spoke Light Alloy Wheel style 98	£0	—
17 Inch M Double Spoke Alloy Wheel Style 68M	—	—
17 Inch M Sport Spoke Light Alloy Wheel style 119	■	—
17 Inch Seven Star Alloy Wheel Style 44	—	—
18 Inch' M Sports Spoke Alloy Wheel Style 135M	£710	■
Compact spare wheel in luggage compartment beneath floor	■	■
Sports Suspension	£310	■
<b>Safety and technology</b>		
"Lights on" warning	■	■
Adaptive Headlights (only with Bi-xenon headlights, Headlight washer system and Rain sensor)	£630	£630
Airbags - Front and side, driver and front passenger	■	■
Airbags - Side airbags for rear-seat passengers	£250	£250
Alarm system with remote control and engine immobiliser	■	■
Anti-lock Braking System (ABS)	■	■
Brake Force Display	■	■
Car/key memory	■	■
Check control warning system	■	■
Cornering Brake Control (CBC)	■	■
Cruise control	■	■
Dynamic Stability Control (DSC), incl DBC	■	■
Electronic immobiliser	■	■
First Aid kit and warning triangle	■	■
Front foglamps	■	■
Head restraints - front and rear, adjustable and removable	■	■
Headlight range adjustment, electrical	■	■
Headlight washer system	■	■
High-level third brake light	■	■
Park Distance Control (PDC) at the rear only	■	■
Rain sensor with automatic headlight activation	■	■
Safety battery terminal	■	■
Safety bodyshell - Rollover protection system	■	■
Seat belts - Inertia reel with pyrotechnic belt latch tensioner	■	■

■ Standard    £ Optional cost    — Not Available

# The BMW 3 Series 330Ci Convertible

BMW UK



## Equipment

Safety and technology	330Ci SE	330Ci M Sport
Traction mode	■	■
Tyre Puncture Warning System (TPWS)	■	■
Universal remote control	£160	£160
Windscreen wipers with adjustable interval	■	■
Xenon headlights with headlight washer system	£545	£545
<b>Seats</b>		
ISOFIX child seat attachment (rear)	■	■
Lumbar support on driver's and front passenger's seats, electrically adjustable	£295	£295
Part electric seat adjustment	■	■
Rear seat easy access system	■	■
Seat heating, front	£320	£320
Sports seats, front with part electrical adjustment	£465	■
<b>Exterior equipment</b>		
Bumpers and exterior mirrors in body colour	■	■
Chrome exhaust tail pipe covers	■	■
Chrome exterior trim	■	—
Chrome headlight surrounds	■	—
Electric door mirrors	■	■
Exterior mirror package including fold-in function	£190	£190
Exterior parts in body colour. Includes exterior door handles, roof finisher, handle on boot lid and air intake on bonnet.	■	■
Glass rear screen - electrically heated	■	■
Hardtop	£1,595	£1,595
Hardtop Preparation	■	■
Heated Exterior Mirrors and washer jets	■	■
High-gloss Shadowline exterior trim	£315	■
Indicator lenses, clear	■	■
M Aerodynamic Body Styling	—	■
Matt chrome insert in front valance	■	■
Model designation, deletion	£0	£0
Screenwasher nozzles, heated	■	■
Softtop - black	■	■
Softtop - blue	£0	£0
Softtop operation - fully automatic	■	■
Towbar with removable ball head	£695	£695
Wind deflector	£250	£250
<b>Interior equipment</b>		
Air conditioning, automatic	■	■
Air microfilters	■	■

■ Standard    £ Optional cost    — Not Available

# The BMW 3 Series 330Ci Convertible

BMW UK



## Equipment

Interior equipment	330Ci SE	330Ci M Sport
Armrest at the front	■	■
Automatic Air Recirculation	■	■
Chrome surrounds on interior dials	■	■
Climate comfort laminated glass	£190	£190
Courtesy lights with switchable reading lights at the front	■	■
Digital clock	■	■
Double-sided mat in luggage compartment	■	■
Floor mats	£75	£75
Graduated tinted windscreen	£70	£70
Rear-view mirror, automatically dimming and folding	■	■
Ski-bag	£150	£150
Smoker's package	■	■
Smoker's package, deletion	£0	£0
Toolkit integrated in rear lid	■	■
Vanity mirrors with slide covers for driver and front passenger	■	■
Variable luggage compartment	■	■
Visible VIN	■	■
Window lifts front and rear, electrical, with open/close fingertip control, anti-trap facility and comfort closing function all round	■	■
<b>Steering wheels</b>		
M Sport multi-function leather Steering Wheel	—	■
Multi-function steering wheel (operation of radio and cruise control)	■	■
Steering column with manual reach and rake adjustment	■	■
<b>Audio and communications</b>		
BMW Assist (only in conjunction with Bluetooth telephone preparation with telematics and a Navigation system)	£0	£0
<b>Paintwork, upholstery and trims</b>		
Interior trim - Alu-cube silver	—	£170
Interior trim - Aluminium pillar-look	£200	—
Interior trim - Birch wood	£295	£295
Interior trim - Black Aluminium Cube	—	■
Interior trim - Myrtle wood	£295	£295
Interior trim - Poplar smoke grey (included with Futura Exclusive leather)	£0	—
Interior trim - Silk grey	£0	—
Interior trim - Titanium II	■	—
Metallic paintwork	■	■
Non-metallic paintwork	£0	£0

■ Standard    £ Optional cost    — Not Available

# The BMW 3 Series 330Ci Convertible

BMW UK



## Equipment

Paintwork, upholstery and trims	330Ci SE	330Ci M Sport
Upholstery - Anthracite Laser/Alcantara	—	■
Upholstery - Finolino cloth/leather	£550	—
Upholstery - Futura Exclusive leather	£1,595	£1,195
Upholstery - Montana leather	£1,200	£800
Upholstery - Tex 2000 cloth	■	—

■ Standard    £ Optional cost    — Not Available

## Technical Specification 330Ci SE Convertible

**Note** - Figures in brackets represent Automatic transmission

### Engine

Cylinders/valves 6/4  
Capacity cml 2,979  
Stroke/Bore (mm) 89.6/84.0  
Max output (kW/hp/rpm) 170/231/5,900  
Max torque (Nm/rpm) 300/3,500

### Wheels

Tyre size front 225/45 R17  
Tyre size rear 225/45 R17  
Wheel size front 8J x 17  
Wheel size rear 8J x 17

### Fuel consumption

Urban (mpg) 21.1 (19.0)  
Extra-urban (mpg) 38.7 (37.7)  
Combined (mpg) 29.4 (27.7)  
Urban (ltr/100km) 13.4 (14.9)  
Extra-urban (ltr/100km) 7.3 (7.5)  
Combined (ltr/100km) 9.6 (10.2)  
CO2 emissions (g/km) 229 (244)  
Tank capacity (ltr) 63

### Dimensions

Wheelbase 2,725  
Vehicle length 4,488  
Vehicle width 1,757  
Vehicle height 1,372  
Track, front 1,471  
Track, rear 1,483

### Performance

Drag (cw) 0.35  
Top speed (mph) 153 (149)  
Acceleration 0-62 mph (sec) 6.9 (7.5)  
Acceleration 50-75 mph in 4th (sec) 7.4 (-)

### Weight

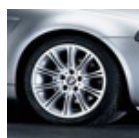
Unladen (EU) 1,660 (1,695)  
Max permissible 2,005 (2,040)  
Permitted load 420  
Permitted axle load, front/rear 950/1,100

## Accessories - Introduction



Freedom of expression. For people who love driving, a BMW 3 Series Convertible is more than a car; it's a means of self-expression. And with the vast range of BMW accessories contained in these pages - all designed and manufactured to the same exacting standards as your car - you're free to make whatever statement you choose. In short, an even more individual BMW begins here.

## Accessories - Exterior styling



### 18" M double spoke styling 135

Complete wheel set with tyres. 225/40 ZR18 front  
225/35 ZR18 rear.



### 18" M V spoke styling 72

Complete wheel set with tyres. 225/40 ZR18 front  
255/35 ZR18 rear

# The BMW 3 Series 330Ci Convertible

BMW UK



## Accessories - Exterior styling



### 17" M double spoke styling 68

Complete wheel set with tyres. 225/45 ZR17 front 245/40 ZR17 rear.



### 17" Double spoke composite styling 71

Complete wheel set with tyres. 224/45 R17 91W without RDC.



### 17" Cross spoke composite II styling 42

Two-piece, with titanium bolts. Bright-turned rim flange, cast/forged. Complete wheel set with tyres. 225/45 R17 91W without RDC.



### 16" Radical spoke styling 32

Complete wheel set with tyres. 225/50 ZR16



### Mudflaps

Protect the car against dirt and road chippings around the wheel arches. Available for the front and rear wheels.



### Anti-theft wheel locking bolts

The studs have a special inner tooth system and can only be undone with the tool supplied.



### Aerodynamic package for 3 Series Convertible

The same aerodynamic components are available for the 3 Series Convertible as for the 3 Series Coupe. The rear spoiler has been designed specifically for the convertible and will emphasize its stylish lines.



### Tailpipe trims in black and chrome

Various tailpipe trims are available for nearly every model series.



### Wind deflector

Reduces air turbulence in the car's interior when the top is open, improves efficiency of heater and enhances comfort.



### Titanium headlight trims



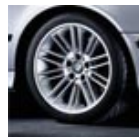
### M aerodynamics package

The M front apron, M rear apron and M side skirts emphasise the sporty lines of your BMW, while the M rear spoiler (Saloon and Coupe only) adds an extra touch.



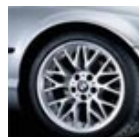
### 17" Star spoke styling 44

Complete wheel set with tyres. 225/45 R17 91W



### 17" Parallel spoke styling 85

Complete wheel set with tyres. 225/45 ZR17 front 245/40 ZR17 rear.



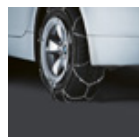
### 17" Cross spoke styling 78

Complete wheel set with tyres. 225/45 R17 91W.



### 16" Star spoke styling 45

Complete wheel set with tyres. 225/50 R16 92W.

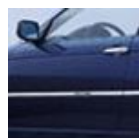


### RUD-matic disc snow chains

These snow chains come ready to fit and are quick and easy to use. Their advanced design protects the surface of alloy wheels from scratches. The high-quality chain structure can be adapted as required to fit different tyre sizes. Your BMW Dealer will be happy to advise you on suitable snow chains and other winter accessories for your car.

### Sports brake discs

Developed by the BMW GmbH M Motorsport to increase the rate of heat dissipation while reducing the risk of brake fading. (Not shown).



### Chrome line exterior

Door handles, number plate holder, door entrance strips, front grille and side rubbing strips are available in chrome plated finish.



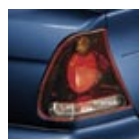
### Hardtop for the 3 Series Convertible

This aluminium hardtop is finished in the body colour to give your a distinct look similar to a Coupe. It includes an integrated rear window in tinted glass and rear reading lights.



### Hardtop roller carrier with cover

This hardtop roller carrier, available with a cover, is the practical solution to storing your hardtop during the 'open-top' season. An alternative storage solution is available in the form of a wall bracket (not shown) with separate cover.



### LED rear lights

# The BMW 3 Series 330Ci Convertible

BMW UK



## Accessories - Interior styling



### Fine wood interior trim

Available in light myrtle and light maple. Please contact your dealer for details.



### Sports seats

The seat height, angle and thigh support can be adjusted to suit drivers and front passengers of any height while distinctive side sections keep you in your seat when cornering. The contents of the package depend on the choice of BMW special equipment.



### Seat heating

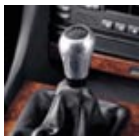
The seat surface and seat back begin warming up a short way into your journey. Three control stages allow normal to rapid heating.



### M door sill trim strips with 'M' lettering



### Leather covered sport steering wheel rim, titanium



### Aluminium gear lever knob with black ring

This polished aluminium gear lever knob is a real eye-catcher in your BMW's interior. Also available in matt chrome.



### Leather covered gear lever knob, wooden inlay

Inlaid gear shift pattern.



### Leather covered knob with chrome inlay

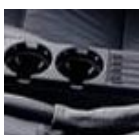


### Leather selector lever grip with chrome inlay



### 'Velour' floor mats

High-quality soft velour, particularly hard-wearing thanks to reinforced rubber backing.



### Drinks holders

Various combinations are available including drinks holders with a cassette box or coin box.



### Handbrake grip

A handbrake grip is the perfect finishing touch to any fine wood trim. Available in light maple, myrtle and matt chrome.



### Central front armrest, folding

Added comfort for driver and passenger, especially on long journeys.



### M gear lever knob, illuminated

This gear lever knob in black leather has an illuminated emblem - bearing the greatest letter in the world.



### Wood/leather-covered sport steering wheel rim with decorative trim

An ideal compliment to the high-grade wood trim. Available with or without multifunction buttons, with decorative trim in high-grade wood. 385mm diameter.



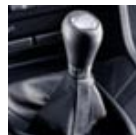
### Wood gear lever knob

Available in a range of woods, such as burr walnut, maple or myrtle depending on the model.



### Selector lever grip, matt chrome

To match the matt chrome handbrake grip.



### Leather gear lever knob, black with chrome ring

With chrome ring and aluminium gear shift pattern.



### Leather gear lever knob, black

Inlaid gear shift pattern.



### Leather selector lever grip with wood inlay



### Halogen reading light

Non-dazzle light for map reading. The light beam can be pointed in any direction thanks to the flexible arm.



### Hand torch

This small torch with a magnifying lens has a rechargeable battery and can be connected to the cigarette lighter socket for recharging.



## Accessories - Interior styling



Sports alloy pedals

## Accessories - Mobile communications



Split screen software

Screen is divided up for parallel display of several pieces of information (e.g. simultaneously viewing on-board computer data and route guidance programme).



CD/DVD holder

Is available for all models and attaches onto the vehicle's sun visor.



nüvi<sup>®</sup> 310D

- Full turn-by-turn guidance with voice prompts
- Preloaded with regional mapping (UK & Ireland) plus downloadable European mapping on DVD-Rom
- Full UK postal code search
- Touch screen display
- Detailed 3D or 2D birds-eye view mapping
- Voice guidance
- Bluetooth<sup>®</sup> Wireless technology for hands-free calling
- GTM 21 integrated FM TMC traffic receiver with 12-volt adapter and free lifetime subscription which notifies you of the traffic and automatically suggests alternative routes\*\*
- Garmin Lock, an anti-theft feature
- Configurable car icons
- Rechargeable li-ion battery 4-8 hours
- Downloadable safety camera databases
- Detailed points of interest
- Detailed street level guidance
- MP3 & audio book player
- World clock
- Calculator
- Currency & measurement converter
- Picture viewer (jpeg format)
- Travel guide (optional)
- Vehicle suction cup mount
- 12-24 volt adapter cable
- SD memory card expansion slot
- Carry case
- PC/USB interface cable
- Owner's manual quick reference guide
- Size: 9.8W x 7.4H x 2.2D cm



Smartnav

Intelligent, real-time vision of the road - available at your fingertips. The system can be fitted with a button and/or a touch screen. Ask your BMW Dealer for further information.



StreetPilot<sup>®</sup>; c510D

- Full turn by guidance with voice prompts
- Preloaded SD card with regional mapping (UK & Ireland) plus downloadable European mapping on DVD-Rom
- Full UK postal code search
- Touch screen display
- Detailed 3D or 2D birds-eye view mapping
- Voice guidance
- GTM 21 integrated FM TMC traffic receiver with 12-volt adapter and free lifetime subscription which notifies you of traffic and automatically suggests alternative routes\*\*
- Garmin Lock, an anti-theft feature
- Configurable car icons
- 8 hours li-ion battery life
- Downloadable safety camera databases
- Detailed points of interest
- Detailed street level guidance
- Vehicle suction-cup mount with 12-volt adapter cable
- Carry case
- Quick reference guide
- SD memory card expansion slot
- Size: 11.3W x 8.2H x 5.6D cm



nüvi<sup>®</sup>; 360

- Full turn-by-turn guidance with voice prompts
- Pre-loaded mapping for Europe
- Full UK postal code search
- Text-to-speech announcements: prompts you to turn right in 500ft\*
- Touch screen display
- Detailed 3D or 2D birds-eye view mapping
- Voice guidance
- Bluetooth<sup>®</sup> wireless technology for hands-free calling
- Traffic services\*\* available with optional GTM 21 FM TMC traffic receiver
- Garmin Lock, an anti-theft feature
- Configurable car icons
- Rechargeable li-ion battery 4-8 hours
- Downloadable safety camera databases
- Detailed points of interest
- Detailed street level guidance
- MP3 & audio book player
- World clock
- Calculator
- Currency & measurement converter
- Picture viewer (jpeg format)
- Travel guide (optional)
- Language translator (optional)
- Vehicle suction cup mount
- 12-24 volt adapter cable
- SD memory card expansion slot
- AC charger
- Carry case
- PC/USB interface cable
- Owner's manual
- Quick reference guide
- Size: 9.8W x 7.4H x 2.2D cm

## Accessories - Mobile communications



### Bluetooth universal hands-free kit

Suitable for a variety of brands of mobile phone. By using the phone-specific and easily interchangeable snap-in adapter, calls can be made via the hands-free kit whilst charging the phone at the same time. The kit is operated by the following integrated devices: voice control, the on-board monitor or the multi-function steering wheel depending on the vehicle's specification. Snap-in adapters are available separately.



### BMW CD changer

Six disc CD changer only suitable for radio appliances with an integrated CD control system. An adapter may also be required for older models.



### Dual band telephone aerial (hidden in rear bumper)

### BMW ipod connector

Allows an ipod to be connected and controlled using the radio and multi-function steering wheel. The connector is fitted inside the glovebox and tracks are played over the stereo system whilst charging the ipod via the vehicle's electrical system. The ipod interface supports the following functions: next/previous track, skip tracks in steps of 10 (not in RND and RPT mode, fast forward/reverse (in RND and RPT mode only), random play, scan SC, playback 5 special play lists, playback all tracks. The interface does not display information on artist and track or track search. The following versions are compatible with the interface: ipod (G3, G4) with docking connector from software version 1.1 onwards. The ipod can be fitted to vehicles with a CD changer however the CD changer must be disconnected and can therefore no longer be used.



### Snap-in adapters



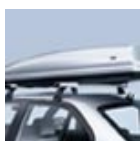
### CD holder in centre console

For six CDs which can be removed at the touch of a button. CD boxes included.

### Auxiliary connector

Enables connection to external devices such as an ipod or MP3 player. Volume can be controlled via radio or multi-function controls however it is not possible to select tracks via the car's controls.

## Accessories - Versatility



### BMW roof boxes

With the anti-theft five-part lock. Available in three sizes in silver (320, 350 and 450) and two sizes in black (320 and 450).



### Trailer tow hitch

Suitable for higher trailer loads of up to 2275kg (with a nose weight of up to 75kg). The trailer tow hitch is invisible when the tow ball is removed. Also available in a fixed version.



### Luggage compartment floor net

Secures to existing eyelets using S-hooks.



### Coolbag

CFC-free, electric cooler which cools its contents to approximately 20 degrees C below the temperature inside the car. Capacity: 12ltr.



### Multi fix system for luggage compartment

Special brackets with non-slip finish to secure items of all shapes and sizes.



### Luggage compartment tensioning straps

Two tear-resistant nylon straps which are secured to the fixing eyelets in the luggage compartment. The easy way to secure items of all shapes and sizes both quickly and safely.



### Anti-slip mat



### Universal protective rear cover

Cover made of waterproof leatherette which is simply hooked over the head rests. Protects the wall panels on each side.

# The BMW 3 Series 330Ci Convertible

BMW UK



## Accessories - Safety and security

### Motor Insurance for your BMW, by BMW

For an insurance quote, call BMW Motor Insurance on 0870 0240 520. Lines are open 8am-8pm weekdays and 9am-5pm Saturdays. Calls may be recorded. BMW Motor Insurance is underwritten by UK Insurance Limited. Conditions apply.



### Headlight washer system

The headlight washer system prevents dirt accumulation on the headlights. This ensures better illumination on the road.



### Powder-type fire extinguisher

Stowed ready to hand under the driver's seat.



### Tow bar



### Warning jacket

Neon-colour safety jacket for adults.



### First aid box or first aid pouch



### Dog harness

Dogs fitted with this harness are safely restrained by the three-point seat belt, even in the event of sharp braking. Available in 3 sizes.



### Car covers

These breathable, machine-washable protective covers are tailor-made for the individual models and are easy to fit.



### Baby Seat 0+

Up to 13 kg (approx. 18 months). The ideal seat for the smallest of children weighing up to 13 kg (approx. 18 months). The system consists of a frame installed in the vehicle and a portable baby shell. The BMW Baby Seat 0+ is fitted in the opposite direction of travel. This significantly reduces the pressure exerted on the child's cervical spine in the event of a frontal collision. With the optionally available seat size reducer, the BMW Baby Seat 0+ can be ergonomically adapted to fit newborns.



### Junior Seat II

15 to 25 kg (approx. 3.5 up to 7 years). The BMW Junior Seat II is offered without constraint cushion for children over 15 kg and approx 3.5 years. The ISOFIX preparation may only be legally used for children up to 18 kg. Accordingly, the BMW Junior Seat II and the BMW Junior Seat III are not available in the ISOFIX version.



### Xenon and Bi-xenon headlights

Throw a bright, and far-reaching uniform beam onto the road without dazzling the oncoming traffic. Includes automatic headlight range adjuster. Dipped beam headlights with maximum luminous power and long serving life.



### Safety rear view mirror

Automatic anti-dazzle, large mirror surface, chrome plated.



### Tow cable



### Warning triangle



### Jump leads

In original BMW pouch with electronic protective circuit.



### Torch with rechargeable battery

Recharges from the standard socket in the glove box.



### On-board computer

The on-board computer provides information on the average fuel consumption, average speed, range, temperature outside, time and date. These functions vary according to the series and model.



### Park distance control

Makes parking and manoeuvring the car easier. Obstacles at a distance of approximately 1.5m are detected and signalled by an acoustic warning.



### Junior Seat I-II

9 to 25 kg (approx. up to 7 years). The BMW Junior Seat I-II with height and tilt adjustable backrest and restraint cushion is an ideal solution for children between 9 months and 7 years (9 to 25 kg body weight). The restraint cushion offers ideal protection to children from 9 months up to approx. 4 years: It reduces the impact of the forces acting on the cervical spine in the event of an accident. For children with a body weight in excess 18 kg or approx. 3.5 years, the restraint cushion is no longer used. Your child is then secured in using the vehicle seat belt.



### Junior Seat III

Over 22 kg (approx. 6 up to 12 years). Ideal comfort for passengers over 22 kg and approx. 6 years. The seat cushion provides the necessary restraint with optimal belt fitting layout whilst also providing a better all round view. The simple positioning of the seat belt also allows "big kids" the ability to buckle themselves in.

# The BMW 3 Series 330Ci Convertible

BMW UK



## Accessories - Car care

### Convertible care set

A full set of care products comprising care shampoo, convertible rear window cleaner and impregnating agent. (Not shown).



### Wash & Wax, 500ml

Liquid car wax for adding to the washing water. Cleans and protects in one.



### Car wax, 500ml

Gives all new and clean multi-coloured or metallic paintwork a long-lasting high gloss finish without smearing.

### Chrome polishing paste, 100g

Produces intense sheen and leaves an invisible silicone film which protects against the effects of weather corrosion etc. (Not shown).



### Leather care agent, 375ml

Protects the leather after general cleaning.



### Silicone spray, 300ml

A colourless universal lubricant that can be used on hinges, etc. Also cleans and cares for rubber plastic parts.



### Castrol top-up pack



### Door lock de-icer, 50ml

Thaws out frozen door locks.



### Insect remover, 500ml

Effortlessly removes insects from glass, paintwork, chrome and plastics.

### Window cleaner with anti-misting additive. Spray can, 300ml

Removes traces of ingrained dirt, silicone and oil. (Not shown).

### Windscreen cleaner for summer use

For windscreen washer systems. (Not shown).



### Impregnating agent 250ml

For reproofing the convertible soft top. Can also be used for reproofing leather.



### Car polish, 500ml

Solvent-free cleansing and care liquid for matt, multi-coloured and metallic paintwork. It contains high-quality, hard waxes which protect the paintwork.

### Transparent wax, 300ml

Protects painted and unpainted surfaces against corrosion. (Not shown).



### Cockpit spray, 300ml



### Plastic care liquid, 200ml

Intensive care product with silicone for all plastic parts, such as door and instrument panel trims and bumpers. It cuts down static and gives a silk matt finish.

### Engine protector, 300ml

Protects the engine against moisture and dirt. (Not shown).

### Windscreen cleaner with antifreeze

Prevents the water in the windscreen washer system from freezing. (Not shown).

### Ice scraper

With three different edges for ice, frost and dew. (Not shown).

### Insect sponge

(Not shown).

### Window cleaner with anti-misting additive, 500ml

Removes traces of ingrained dirt, silicone and oil. (Not shown).

### Intensive window cleaner

Specially formulated concentrated cleaner for cars with additional windscreen washer system.



## Accessories - Car care

### Concentrated cleaner for windscreen washer, 25ml

For windscreen washer systems. (Not shown).

### Stain remover, 1000ml

Removes tar and oil grease stains from seat covers, leather and plastic parts. (not shown).



### Wheel rim cleaner, 500ml

For genuine BMW alloy and steel wheels.



### Engine and cold-cleaner, 500ml

Rapid cleaner for heavily soiled engines and machine parts. Will not attack paintwork, rubber or plastics.



### BMW genuine HydroColorSystems



### Tar remover, 300ml

The easy way to remove tar, asphalt and oil stains.

### Silicone remover concentrate, 250ml

Removes stubborn dirt such as silicone, oil and grease. (Not shown).

### Cleaning brush for alloy wheels

For cleaning BMW alloy wheels thoroughly. Comes with three different attachments. (Not shown).



### Interior cleaner, 250ml

For cleaning all materials in the interior.

### Special sprays

A large selection is available from your BMW Dealer. (Not shown).

BMW (UK) Limited reserves the right to alter prices and specifications without notice. BMW (UK) Limited has made every effort to ensure the accuracy of information but does not accept liability for any errors or omissions.

Prices and specification shown are effective from March 2006.