



VOLVO
S40 PRICING

VOLVO
for life



THE VOLVO S40

The Volvo saloon resemblance is all there – from the distinctive black egg-crate grille and V-shaped bonnet to the full-length pronounced shoulders and tightly sculpted rear with distinctive tail lights. The Volvo S40 saloon is clearly part of the family.

The youthful nature and dynamic performance of this Volvo has encouraged a revolutionary approach to interior layout with a central control unit influenced heavily by contemporary high-end technology design. A world first, the floating centre stack co-locates the audio and climate controls in the style of a remote control unit for a high-tech audio system and creates a spacious feeling of reassuring simplicity.

CHOOSE YOUR VOLVO	2-3
STANDARD AND OPTIONAL EQUIPMENT	4-5
ACCESSORIES & UPHOLSTERY	6-7
TECHNICAL SPECIFICATION	8-9
CHOOSE YOUR COLOUR	10
CARE BY VOLVO	11

S40 S

The comprehensive specification includes ECC (Electronic Climate Control), 16" Caligo alloy wheels, DSTC (Dynamic Stability and Traction Control), power windows, cruise control, leather steering wheel and a 6-speaker radio/CD system.

	Basic £	VAT £	Rec Retail Price £	On the Road Price £	On the Road Price € ⁽ⁱ⁾ Euros
PETROL					
1.6 S	£12,625.53	£2,209.47	£14,835.00	£15,503.00	€22,494.85
1.8 S	£13,476.60	£2,358.40	£15,835.00	£16,503.00	€23,945.85
2.4i S	£15,604.26	£2,730.74	£18,335.00	£19,018.00	€27,595.12
DIESEL					
1.6D S Euro III	£13,731.91	£2,403.09	£16,135.00	£16,768.00	€24,330.37
2.0D S Euro III	£14,668.09	£2,566.91	£17,235.00	£17,868.00	€25,926.47
2.0D S Euro IV	£14,923.40	£2,611.60	£17,535.00	£18,188.00	€26,390.79

S40 SPORT

The striking exterior lines are enhanced with 18" Medusa alloy wheels and full bodykit whilst the unique interior design is complemented with the addition of new Dala upholstery.

	Basic £	VAT £	Rec Retail Price £	On the Road Price £	On the Road Price € ⁽ⁱ⁾ Euros
PETROL					
1.8 Sport	£14,880.85	£2,604.15	£17,485.00	£18,153.00	€26,340.00
2.4i Sport	£17,008.51	£2,976.49	£19,985.00	£20,668.00	€29,989.27
T5 Sport	£19,476.60	£3,408.40	£22,885.00	£23,568.00	€34,197.17
DIESEL					
2.0D Sport Euro III	£16,072.34	£2,812.66	£18,885.00	£19,518.00	€28,320.62
2.0D Sport Euro IV	£16,327.66	£2,857.34	£19,185.00	£19,838.00	€28,784.94

S40 SE

The SE model brings added luxury to the S40 saloon. Leather upholstery, 17" Stylla alloy wheels, information centre, a choice of interior inlays and power driver's seat are just some of the standard SE features.

	Basic £	VAT £	Rec Retail Price £	On the Road Price £	On the Road Price € ⁽ⁱ⁾ Euros
PETROL					
1.6 SE	£14,625.53	£2,559.47	£17,185.00	£17,853.00	€25,904.70
1.8 SE	£15,476.60	£2,708.40	£18,185.00	£18,853.00	€27,355.70
2.4i SE	£17,604.26	£3,080.74	£20,685.00	£21,368.00	€31,004.97
T5 SE	£20,072.34	£3,512.66	£23,585.00	£24,268.00	€35,212.87
DIESEL					
1.6D SE Euro III	£15,731.91	£2,753.09	£18,485.00	£19,118.00	€27,740.22
2.0D SE Euro III	£16,668.09	£2,916.91	£19,585.00	£20,218.00	€29,336.32
2.0D SE Euro IV	£16,923.40	£2,961.60	£19,885.00	£20,538.00	€29,800.64

S40 SE SPORT

The SE Sport model is the ultimate choice within the range, combining the extensive interior luxury features of the SE with the dramatic exterior bodykit and 18" alloy wheels from the Sport model.

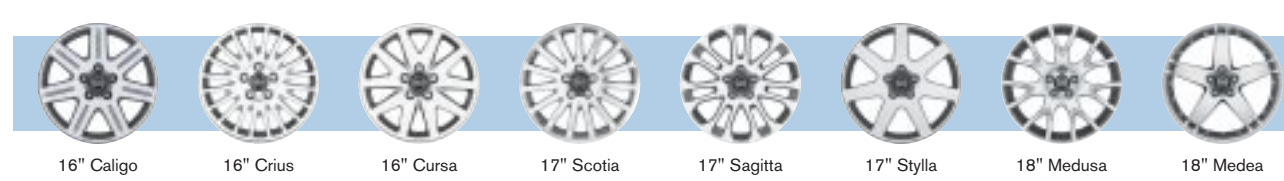
	Basic £	VAT £	Rec Retail Price £	On the Road Price £	On the Road Price € ⁽ⁱ⁾ Euros
PETROL					
1.8 SE Sport	£16,497.87	£2,887.13	£19,385.00	£20,053.00	€29,096.90
2.4i SE Sport	£18,625.53	£3,259.47	£21,885.00	£22,568.00	€32,746.17
T5 SE Sport	£21,093.62	£3,691.38	£24,785.00	£25,468.00	€36,954.07
DIESEL					
2.0D SE Sport Euro III	£17,689.36	£3,095.64	£20,785.00	£21,418.00	€31,077.52
2.0D SE Sport Euro IV	£17,944.68	£3,140.32	£21,085.00	£21,738.00	€31,541.84



(i) Euro prices shown are calculated using an exchange rate of 1.451 Euros to the £, the exchange rate published in the Financial Times as at 1st March 2005. Euro prices will be subject to the prevailing exchange rate at the time of purchase. These figures are for information purposes only.

SAFETY & SECURITY	S	SPORT	SE	SE SPORT
Dual Stage Driver and Passenger Airbags	•	•	•	•
SIPS (Side Impact Protection System)	•	•	•	•
SIPS Airbags	•	•	•	•
IC (Inflatable Curtain)	•	•	•	•
WHIPS (Whiplash Protection System) (Front Seats)	•	•	•	•
ABS (Anti-lock Brakes) with EBD (Electronic Brake Distribution) and Electronic Brake Assistance	•	•	•	•
DSTC (Dynamic Stability and Traction Control)	•	•	•	•
5 Three Point Seat Belts	•	•	•	•
Seat Belt Pre-tensioners (Front and Outer Rear)	•	•	•	•
Head Restraints – All 5 Seats	•	•	•	•
Anti-theft Alarm including Immobiliser	•	•	•	•
Key Integrated Remote Control Central Locking including Fuel Flap with Deadlocking System	•	•	•	•
Tinted Windows	•	•	•	•
Visible VIN Plate	•	•	•	•
Day Running Lights	•	•	•	•
Headlamp Levelling System	•	•	•	•
High Level LED Brake Light	•	•	•	•
Side Marker Illumination	•	•	•	•
Home Safe and Approach Lighting	•	•	•	•
INTERIOR	S	SPORT	SE	SE SPORT
ECC (Electronic Climate Control) with AQS (Air Quality System) and Pollen Filter	•	•	•	•
Exterior Temperature Gauge	•	•	•	•
Information Centre	•	•	•	•
Cruise Control	•	•	•	•
Front and Rear Power Windows	•	•	•	•
Power Adjustable and Heated Door Mirrors	•	•	•	•
Illuminated Driver and Passenger Vanity Mirrors	•	•	•	•
Front and Rear Reading Lamps	•	•	•	•
Autodimming Rear View Mirror	•	•	•	•
Rear Centre Armrest with Twin Cupholders and Storage	•	•	•	•
Front Cupholders	•	•	•	•
Grocery Bag Holder	•	•	•	•
Rear 12v Socket	•	•	•	•
Power Driver's Seat (with Seat Memory)	•	•	•	•
Forward Folding Front Passenger Seat	•	•	•	•
Height Adjustable Passenger Seat with Lumbar Support	•	•	•	•
Asymmetric Split-folding Rear Seat (60%/40%)	•	•	•	•
Front Centre Armrest	•	•	•	•
Leather Steering Wheel	•	•	•	•
Leather Gear Knob	•	•	•	•
Steering Wheel Remote Audio Controls	•	•	•	•
Height and Reach Adjustable Steering Column	•	•	•	•
Bauxite Trim	•	•	•	•
Aluminium Trim	•	•	•	•
Wood Effect Trim	•	•	•	•
Boden Textile Upholstery	•	•	•	•
Dala T-Tec Upholstery	•	•	•	•
Leather Upholstery	•	•	•	•
Performance Sound Audio System – CD/Radio, 4 x 20W Amplifier and 6 Speakers	•	•	•	•
High Performance Sound Audio System – 6 x CD/Radio, 4 x 40W Amplifier and 8 Speakers	•	•	•	•
EXTERIOR	S	SPORT	SE	SE SPORT
16" Caligo Alloy Wheels – 205/55 R16 91W Tyres	•	•	•	•
17" Stylla Alloy Wheels – 205/50 R17 89W Tyres	•	•	•	•
18" Medusa Alloy Wheels – 215/45 R18 93W Tyres	•	•	•	•
Locking Wheel Nuts	•	•	•	•
Tempa Spare Wheel	•	•	•	•
Front Fog Lights	•	•	•	•
Speed Dependent Interval Wiper Function	•	•	•	•
Rain Sensor – Automatic Windscreen Wiper Activation	•	•	•	•
Comfort Chassis (Sport – 1.8 only)	•	•	•	•
Dynamic Chassis (SE – T5 only)	•	•	•	•
Rally Bar (Front Strut Stiffener)	•	•	•	•
Rear Lip Spoiler (T5 only)	•	•	•	•
Full Bodykit (Front and Rear Spoilers and Side Skirts)	•	•	•	•
Grey Sill Cover with Stainless Steel Step Covers	•	•	•	•
Grey Side Mouldings	•	•	•	•
Full Body Coloured Side Mouldings	•	•	•	•

SAFETY & SECURITY	Basic £	VAT £	Rec Retail Price £	Rec Retail Price € ⁽ⁱ⁾	S	SPORT	SE	SE SPORT
Passenger Airbag Cut Off Switch	£21.28	£3.72	£25.00	€36.28	o	o	o	o
Laminated Side Windows	£255.32	£44.68	£300.00	€435.30	o	o	o	o
Inclination Sensor	£106.38	£18.62	£125.00	€181.38	o	o	o	o
ISOFIX Attachment (Rear Seats)	£23.83	£4.17	£28.00	€40.63	o	o	o	o
INTERIOR	Basic £	VAT £	Rec Retail Price £	Rec Retail Price € ⁽ⁱ⁾	S	SPORT	SE	SE SPORT
Geartronic Transmission (2.4i and T5 only)	£1,063.83	£186.17	£1,250.00	€1,813.75	o	o	o	o
Keyless Drive	£425.53	£74.47	£500.00	€725.50	o	o	o	o
Power Glass Tilt & Slide Sunroof	£595.74	£104.26	£700.00	€1,015.70	o	o	o	o
Sun Curtain (Rear Shelf – Manual)	£85.11	£14.89	£100.00	€145.10	o	o	o	o
Autodimming Rear View Mirror	£170.21	£29.79	£200.00	€290.20	o	o	•	•
Power Folding Door Mirrors with Ground Lights	£170.21	£29.79	£200.00	€290.20	o	o	o	o
Front and Rear Ashtray with Cigarette Lighter	–	–	–	–	nco	nco	nco	nco
Power Driver's Seat (with Seat Memory)	£468.09	£81.91	£550.00	€798.05	o	o	•	•
Power Driver and Passenger Seats (with Driver's Seat Memory)	£936.17	£163.83	£1,100.00	€1,596.10	o	o	u (£550)	u (£550)
Aluminium Trim	–	–	–	–	n/a	•	nco	nco
Wood Effect Trim	–	–	–	–	n/a	n/a	•	•
Leather-faced Upholstery	£1,021.28	£178.72	£1,200.00	€1,741.20	o	u (£600)	•	•
High Performance Sound Audio System – 6 x CD Radio, 4 x 40W Amplifier and 8 Speakers	£212.77	£37.23	£250.00	€362.75	o	o	•	•
Premium Sound Audio System – with Dolby Pro Logic II Surround Sound ⁽ⁱⁱ⁾ , 4 x 70W Amplifier, 6 x CD, 12 Speakers and Steering Wheel Remote Audio Controls	£425.53	£74.47	£500.00	€725.50	o	o	u (£250)	u (£250)
1 x CD/1 x MD (to replace 6 x CD) ⁽ⁱⁱⁱ⁾	–	–	–	–	nco	nco	nco	nco
RTI Navigation System with RDS-TMC and Europe DVD Maps ^(iv)	£1,872.34	£327.66	£2,200.00	€3,192.20	o	o	o	o
Dual Band Integrated GSM Telephone ^(iv)	£425.53	£74.47	£500.00	€725.50	o	o	o	o
EXTERIOR	Basic £	VAT £	Rec Retail Price £	Rec Retail Price € ⁽ⁱ⁾	S	SPORT	SE	SE SPORT
Black Paint (Solid)	£212.77	£37.23	£250.00	€362.75	o	o	o	o
Metallic/Pearlescent Paint	£425.53	£74.47	£500.00	€725.50	o	o	o	o
Inscription™ Coarse Flake Metallic Paint	£638.30	£111.70	£750.00	€1,088.25	o	n/a	o	n/a
16" Crius Alloy Wheels – 205/55 R16 91 V/W Tyres	–	–	–	–	nco	n/a	nco	n/a
16" Cursa Alloy Wheels – 205/55 R16 91 V/W Tyres	–	–	–	–	nco	n/a	nco	n/a
17" Sagitta Alloy Wheels – 205/50 R17 89W Tyres	£255.32	£44.68	£300.00	€435.30	o	nco	nco	nco
17" Stylla Alloy Wheels – 205/50 R17 89W Tyres	£255.32	£44.68	£300.00	€435.30	o	n/a	•	n/a
17" Scotia Alloy Wheels – 205/50 R17 89W Tyres	£425.53	£74.47	£500.00	€725.50	o	n/a	u (£300)	n/a
18" Medea Alloy Wheels – 215/45 R18 93W Tyres	£425.53	£74.47	£500.00	€725.50	n/a	o	n/a	o
Front Fog Lights	£153.19	£26.81	£180.00	€261.18	o	•	•	•
Rear Park Assist	£289.36	£50.64	£340.00	€493.34	o	o	o	o



WINTER PACK	Basic £	VAT £	Rec Retail Price £	Rec Retail Price € ⁽ⁱ⁾	S	SPORT	SE	SE SPORT
Heated Front Seats, Headlamp Cleaning System and Luxury Floor Mats	£297.87	£52.13	£350.00	€507.85	o	o	o	o
BI-XENON PACK	Basic £	VAT £	Rec Retail Price £	Rec Retail Price € ⁽ⁱ⁾	S	SPORT	SE	SE SPORT
Bi-Xenon Headlamps, Headlamp Cleaning System and Luxury Floor Mats	£723.40	£126.60	£850.00	€1,233.35	o	o	o	o
FAMILY PACK	Basic £	VAT £	Rec Retail Price £	Rec Retail Price € ⁽ⁱ⁾	S	SPORT	SE	SE SPORT
Integrated Booster Cushions x 2, Power Child Locks and Sun Curtain (Rear Shelf, Manual)	£255.32	£44.68	£300.00	€435.30	o	o	o	o
CONVENIENCE PACK	Basic £	VAT £	Rec Retail Price £	Rec Retail Price € ⁽ⁱ⁾	S	SPORT	SE	SE SPORT
Information Centre, Autodimming Rear View Mirror, Grocery Bag Holder, Rain Sensor and Rear 12v Socket	£510.64	£89.36	£600.00	€870.60	o	o	•	•
COMMUNICATIONS PACK	Basic £	VAT £	Rec Retail Price £	Rec Retail Price € ⁽ⁱ⁾	S	SPORT	SE	SE SPORT
Volvo On Call ^(iv) , Dual Band Integrated GSM Telephone, RTI Navigation System with RDS-TMC and Europe DVD Maps	£2,127.66	£372.34	£2,500.00	€3,627.50	o	o	o	o

• = standard, o = option, n/a = not available, nco = no cost option, u (£) = upgrade.

(i) Euro prices shown are calculated using an exchange rate of 1.451 Euros to the £ as published in the Financial Times on 1st March 2005. Euro prices will be subject to the prevailing exchange rate at time of purchase. These figures are for information purposes only.

(ii) Dolby and Pro Logic Surround Sound™ are trademarks of Dolby Laboratories Licensing Corporation.

(iii) Must be ordered in conjunction with High Performance or Premium Sound Audio Systems.

(iv) Volvo On Call includes Safety and Security packages.

ACCESSORIES	Basic £	VAT £	Rec Retail Price £	Rec Retail Price € ⁽ⁱ⁾
EXTERIOR ACCESSORIES (PRICES EXCLUDE FITTING UNLESS SHOWN OTHERWISE)				
Aluminium Bike Rack (down tube clamp)	£63.83	£11.17	£75.00	€108.83
Bike Rack (servo lift)	£81.70	£14.30	£96.00	€139.30
Load Carrier (different models available) ...from ^(iv)	£105.53	£18.47	£124.00	€179.92
Mud Flaps (front)	£22.13	£3.87	£26.00	€37.73
Mud Flaps (rear)	£22.13	£3.87	£26.00	€37.73
Roofbox – Sport Time 200 (440 litre volume)	£267.23	£46.77	£314.00	€455.61
Roofbox – Sport Time 500 (310 litre volume)	£189.79	£33.21	£223.00	€323.57
Roofbox – Space 650 (365 litre volume)	£232.34	£40.66	£273.00	€396.12
Roofbox – Space 650 (365 litre volume)	£301.28	£52.72	£354.00	€513.65
Roofbox – Weekender (370 litre volume)	£215.32	£37.68	£253.00	€367.10
Load Basket	£83.40	£14.60	£98.00	€142.20
Snow Chain – standard version (variety available) ...from ^(iv)	£138.72	£24.28	£163.00	€236.51
Towbar – Fixed type with 7 Pin Electrics ⁽ⁱⁱ⁾	£349.79	£61.21	£411.00	€596.36
Towbar – Fixed type with 13 Pin Electrics ⁽ⁱⁱ⁾	£387.23	£67.77	£455.00	€660.21
Towbar – Detachable type with 7 Pin Electrics ⁽ⁱⁱ⁾	£440.85	£77.15	£518.00	€751.62
Towbar – Detachable type with 13 Pin Electrics ⁽ⁱⁱ⁾	£478.30	£83.70	£562.00	€815.46
Front Park Assist ⁽ⁱⁱⁱ⁾	£249.36	£43.64	£293.00	€425.14
Rear Spoiler	£284.26	£49.74	£334.00	€484.63
Bumper Protector (dirt cover)	£43.40	£7.60	£51.00	€74.00
INTERIOR ACCESSORIES (PRICES EXCLUDE FITTING UNLESS SHOWN OTHERWISE)				
Boot Mat – moulded plastic	£64.68	£11.32	£76.00	€110.28
Boot Mat – textile/rubber reversible	£77.45	£13.55	£91.00	€132.04
Cooler/Hot Box (excludes power cable)	£68.94	£12.06	£81.00	€117.53
Hamburger Table	£17.87	£3.13	£21.00	€30.47
Hands-free Phone System ...from ^(iv)	£502.13	£87.87	£590.00	€856.09
First Aid Kit	£17.87	£3.13	£21.00	€30.47
Load Liner – form moulded plastic	£56.17	£9.83	£66.00	€95.77
Load Securing Straps (cargo area)	£17.87	£3.13	£21.00	€30.47
Padded Neck Cushion	£22.98	£4.02	£27.00	€39.18
Turn by Turn Sat Nav inc RDS-TMC (mono)		available end 2005		
Rubber Floor Mats (set of four)	£64.68	£11.32	£76.00	€110.28
Sunblind – rear door windows (pair)	£51.06	£8.94	£60.00	€87.06
Table (rear centre armrest)	£17.87	£3.13	£21.00	€30.47
Warning Triangle	£20.43	£3.57	£24.00	€34.82
CHILD SEATS				
Child Seat (ISOFIX)		available Q3 2005		
Child Seat (non-ISOFIX)	£146.38	£25.62	£172.00	€249.57
Baby Insert	£28.09	£4.91	£33.00	€47.88
Child Booster Cushion	£28.09	£4.91	£33.00	€47.88
Child Booster Backrest (to go with above)	£28.09	£4.91	£33.00	€47.88
Padded Upholstery – for booster seat and headrest	£26.38	£4.62	£31.00	€44.98

(i) Euro prices shown are calculated using an exchange rate of 1.451 Euros to the £ as published in the Financial Times as at 1st March 2005. Euro prices will be subject to the prevailing exchange rate at the time of purchase. These figures are for information purposes only.

(ii) Indicates total fitted price post registration. At participating dealers only.

(iii) Must be ordered in conjunction with Rear Park Assist (factory fit option).

(iv) Prices for this accessory start at this level.

For further information and a complete list of all Volvo Accessories, just take a look at the new Accessory website at www.volvocars.co.uk/accessories.

UPHOLSTERY	Upholstery Code	Upholstery Colour	Dashboard Top & Upper Door Panel	Lower Door Panel, Lower Dashboard, Carpet & Tunnel Console	Door Insert Colour	Headliner Colour
Boden Textile	5121	Quartz Beige	Umbra Brown	Quartz Beige	Quartz Beige	Quartz Beige
	5177	Off Black	Off Black	Off Black	Off Black	Quartz Beige
Dala T-Tec	5322	Umbra Brown	Umbra Brown	Quartz Beige	Quartz Beige	Quartz Beige
	5377	Off Black	Off Black	Off Black	Off Black	Quartz Beige
Leather-faced	5900	Lava Grey	Lava Grey	Quartz Beige	Lava Grey	Quartz Beige
	5921	Quartz Beige	Umbra Brown	Quartz Beige	Quartz Beige	Quartz Beige
	5924	Calcite Cream	Umbra Brown	Quartz Beige	Calcite Cream	Quartz Beige
	5977	Off Black	Off Black	Off Black	Off Black	Quartz Beige



UPHOLSTERY

BODEN



Quartz Beige (5121)

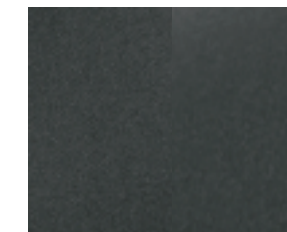


Off Black (5177)

DALA



Umbra Brown (5322)



Off Black (5377)

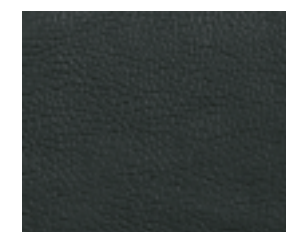
LEATHER



Quartz Beige (5921)



Lava Grey (5900)



Off Black (5977)



Calcite Cream (5924)

INTERIOR INLAYS



Bauxite



Aluminium



Wood effect

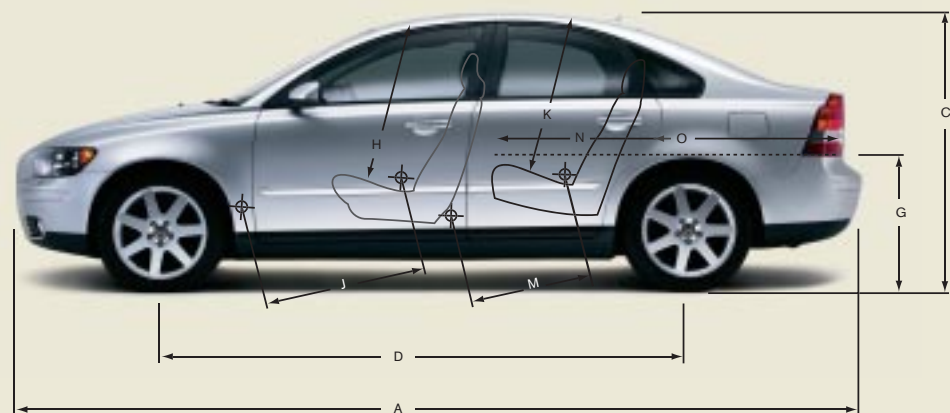
NB It is not possible to reproduce exact original shades in printed matter.

ENGINE	1.6	1.8	2.4i	T5	1.6D	2.0D Euro III/IV
Configuration	Transverse – 16 valve	Transverse – 16 valve	Transverse – 20 valve	Transverse – 20 valve	Transverse – 16 valve	Transverse – 16 valve
Cylinders	4	4	5	5	4	4
Engine capacity, cc	1596	1798	2435	2521	1560	1997
Bore x stroke, mm	79 x 81.4	83 x 83.1	83 x 90	83 x 93	75 x 88.3	85 x 88
Max. output ECE, bhp/kw/rpm	100/74/6000	125/92/6000	170/125/6000	220/162/5000	109/80/4000	136/100/4000
Max. torque ECE, Nm/rpm	150/4000	165/4000	230/4400	320/1500 – 4800	240/1750	320/2000
Octane rating	95 RON Unleaded (min. 91)	95 RON Unleaded (min. 91)	95 RON Unleaded (min. 91)	98 RON ⁽ⁱ⁾ Unleaded (min. 91)	N/A Diesel	N/A Diesel
Fuel system	Multipoint fuel injection	Multipoint fuel injection	Multipoint fuel injection	Multipoint fuel injection	Multipoint direct fuel injection	Multipoint direct fuel injection
Compression ratio	11.0:1	10.8:1	10.3:1	9.0:1	18.3:1	18.5:1

INSURANCE GROUPS	1.6	1.8	2.4i	T5	1.6D	2.0D
Volvo S40 ^(iv)	7E	9E	13E	15E	8E	10E

E = Exceeds security requirements for model concerned and group rating has been reduced.

WEIGHTS	1.6	1.8	2.4i	T5	1.6D	2.0D
Min. kerb weight, kg (actual kerb weight dependent on spec.)	1235	1280	1368	1392	1309	1371
Max. possible towing weight braked, kg	1200	1300	1500	1500	1200	1500
Max. towing weight unbraked approx, kg ^(vi)	650	650	700	700	650	700
Max. total weight, kg	1800	1850	1940	1940	1880	1940
Max. roof load, kg	75	75	75	75	75	75
Max. payload, kg (dependent on spec.)	565	570	572	548	571	569



EXTERIOR (mm)		INTERIOR (mm)	
A Overall length	4468	H Front seat max. headroom ⁽ⁱⁱⁱ⁾	988
B Overall width (exc. wing mirrors)	1770	I Front seats width	1402
C Unladen height	1452	J Front seat max. legroom	1057
D Wheelbase length	2640	K Rear seat max. headroom ⁽ⁱⁱⁱ⁾	945
E Front track width	1535	L Rear seats width	1374
F Rear track width	1531	M Rear seat max. legroom	874
G Ground to boot base height	642	N Load length luggage 2 seat mode	1745
		O Load length luggage 5 seat mode	976

PERFORMANCE	1.6	1.8	2.4i		T5		1.6D	2.0D	
	Man	Man	Man	Auto	Man	Auto	Man	Euro III Man	Euro IV Man
Top speed, mph	115	124	138	134	149	146	118	130	130
Acceleration 0-62 mph, sec	11.9	10.9	8.2	8.9	6.8	7.2	12.0	9.5	9.5
Drag co-efficient	0.31	0.31	0.31		0.31		0.31	0.31	

TRANSMISSION	
Manual 2.0D/T5	6 speed
Manual 1.6/1.8/2.4i/1.6D	5 speed
Geartronic 2.4i/T5	5 speed

TURNING CIRCLE	16"	17"	18"
Rack & pinion, m (ft)	10.6 (34.9)	10.8 (35.4)	11.3 (37.1)

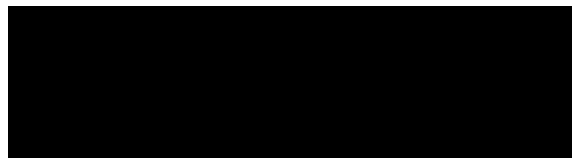
FUEL CONSUMPTION ⁽ⁱⁱ⁾	1.6	1.8	2.4i		T5		1.6D	2.0D	
	Man	Man	Man	Auto	Man	Auto	Man	Euro III Man	Euro IV Man
Urban mpg (l/100km) ⁽ⁱ⁾	29.7 (9.5)	28.8 (9.8)	22.8 (12.4)	21.4 (13.2)	22.6 (12.5)	20.6 (13.7)	45.6 (6.2)	37.2 (7.6)	37.2 (7.6)
Extra Urban mpg (l/100km) ⁽ⁱ⁾	48.7 (5.8)	49.6 (5.7)	42.8 (6.6)	42.2 (6.7)	44.1 (6.4)	40.9 (6.9)	67.3 (4.2)	62.8 (4.5)	61.4 (4.6)
Combined mpg (l/100km) ⁽ⁱ⁾	39.2 (7.2)	39.2 (7.2)	33.2 (8.5)	31.0 (9.1)	32.5 (8.7)	30.1 (9.4)	57.6 (4.9)	50.4 (5.6)	49.6 (5.7)
CO ₂ g/km	171	172	203	217	208	224	129	148	152
VED (Vehicle Excise Duty) Band	E	E	F	F	F	F	C	C	D
Fuel tank volume, litres (gallons)	55 (12.1)	55 (12.1)	62 (13.6)		62 (13.6)		55 (12.1)	55 (12.1)	

BRAKES	1.6/1.8/1.6D	2.4i/T5/2.0D
Disc Diameter mm, front	15" – 278 Ventilated	16" – 300 Ventilated
Disc Diameter mm, rear	280	280

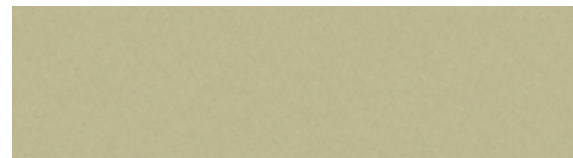
LUGGAGE COMPARTMENT	
Volume, litres (cu. ft)	357 (12.6)
Volume, rear seats down, litres (cu. ft)	883 (31.2)

- (i) The Urban fuel consumption figure is based on typical city driving, including starting the car from cold. The Extra Urban figure is based on typical motorway driving and cruising. The Combined figure averages the consumption across both cycles.
- (ii) These results do not express or imply any guarantee of the fuel consumption of a particular car as there are inevitable differences between individual cars of the same model. Additionally driving style, traffic conditions, as well as the age and mileage and standard of maintenance will affect a car's fuel consumption.
- (iii) Figure quoted without sunroof.
- (iv) Unbraked towing weight must not exceed 50% of kerb weight up to a maximum of 700 kg.
- (v) Sport and SE Sport Insurance Groups TBC.

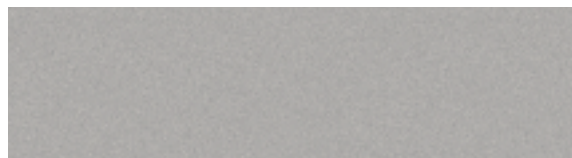
Notes
The weight of a vehicle will influence the level of CO₂ emitted. As a result, vehicles with higher levels of specification and factory fit options may emit higher levels of CO₂. Once a vehicle has been built it will be given its own specific CO₂ emission on which the Vehicle Excise Duty will be charged. A weighbridge must be used to determine specific weights. Data valid for manual transmission unless specified. All measurements in mm.
NB Some of the information in this price list may not be correct due to product changes which may have occurred since it was printed. Some of the equipment described or shown may now be available only at extra cost. Before ordering, please ask your Volvo dealer for the latest information. The manufacturer reserves the right to make changes at any time, without notice, to prices, colour, materials, specifications and models.
Volvo Car UK Limited, Globe Park, Marlow, Buckinghamshire, SL7 1YQ



019 Black Stone



464 Safari Green pearl*



426 Silver metallic



465 Cedar Green pearl*



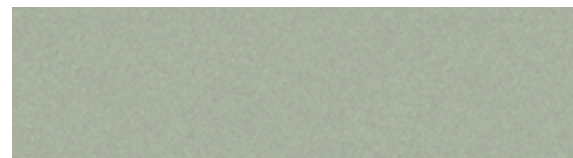
452 Black Sapphire metallic



466 Barents Blue pearl*



454 Ruby Red pearl*



471 Willow Green pearl*



455 Titanium Grey pearl



476 Brilliant Blue pearl*



459 Dawn Blue pearl*



477 Inscription™ Electric Silver Coarse Flake metallic



462 Flint Grey metallic*



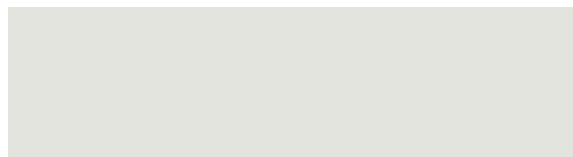
612 Passion Red



463 Blackcurrant pearl*



613 Deep Blue*



614 Ice White*

NB It is not possible to reproduce exact original shades in printed matter. Please ask your dealer to show you samples.
* Not available with Sport and SE Sport.

CARE
BY VOLVO

THE END IS JUST THE BEGINNING

It's a simple idea; one point of contact for all your car ownership needs – whether it's about finding the right finance deal or who to contact in an emergency. To get the most out of owning your Volvo, trust Care by Volvo.

STARTING OFF ON THE RIGHT FOOT

You might be surprised how easy and flexible financing can be. Our range of finance, service and insurance options allows you to budget around one key factor – your lifestyle.

FINANCE/LEASE

As part of Volvo, Volvo Car Finance has developed a series of funding plans that will provide you with maximum choice and flexibility when acquiring a Volvo.

INSURANCE

Volvo Owners Insurance is designed for Volvo drivers and because we know Volvos inside out, we can offer exactly the right tools and expertise, fitting only genuine Volvo parts by trained Volvo technicians. Because Volvo drivers have an excellent reputation, we can also offer extensive cover at a reasonable price.

Call now for your insurance quote on **0800 238 239**⁽ⁱ⁾, quoting reference BROCH.

MAKING LIFE EASIER

Owning a Volvo should be a safe and enjoyable experience. To ensure it stays that way, we're committed to providing you with the best in support for as long as you own one.

SERVICE PROGRAMME

Your Volvo dealer has the unique know-how to tailor a service programme according to Volvo's strict recommendations and guarantees you years of safety and driving pleasure.

VOLVO ON CALL

Subscribe to Volvo On Call and you'll never be completely on your own. It's a GPS-based communication system providing 24-hour access to both emergency and roadside assistance wherever you are. See the Volvo On Call brochure for more information.

LOOKING AHEAD

You'll probably never find out just how good some of these services are. But should the unexpected happen, we'd like to think that you'd be even happier you chose a Volvo.

ROADSIDE ASSISTANCE

Every new car comes with one year's free RAC cover. You'll enjoy full breakdown and recovery assistance, anywhere in Europe, 24 hours a day. You can even extend cover for up to two more years at preferential rates.

WARRANTY

Every new Volvo comes with comprehensive protection. Our warranty covers the first three years or 60,000 miles, whichever comes first. There's a three year unlimited warranty on the paintwork, and either eight or twelve years against rust perforation. If a component fails due to a defect or material fault, your dealer will swiftly rectify the problem, free of charge.

For tax free sales, including Military, Diplomat and all other Export enquiries, contact Volvo Car UK Tourist & Diplomat Sales or Volvo Car UK British Military Sales on **01707 262 388** or e-mail to vcukics@volvocars.com or bms@volvocars.com

WHAT NEXT? If you'd like to find out more about the range of products and services that make up Care by Volvo, the story continues at www.volvocars.co.uk Alternatively you can contact your nearest Volvo dealer or request relevant brochures.

(i) Volvo Owners Insurance is underwritten by Royal & Sun Alliance Insurance plc No. 93792. Registered in England and Wales at St Mark's Court, Chart Way, Horsham, West Sussex RH12 1XL. Authorised and regulated by the Financial Services Authority. For your protection telephone calls will be recorded and may be monitored.

NB Some of the information in this brochure may not be correct due to product changes which may have occurred since it was printed. Before ordering, please ask your Volvo dealer for the latest information. The manufacturer reserves the right to make changes at any time, without notice, to prices, colour, materials, specifications and models.



VOLVO

Volvo Car UK Limited
www.volvocars.co.uk