

THE NEW VOLVO XC90 PRICING



THE VOLVO XC90

Welcome. You're about to take a closer look at the Volvo XC90 – Volvo's next generation SUV (Sports Utility Vehicle). One of the most revolutionary new cars in recent years, the XC90 has surpassed expectations of what an SUV can be. Outstanding passenger comfort for up to 7, excellent fuel consumption, advanced All Wheel Drive and stunning good looks all combine in this harmonious design.

V8

The V8, 4.4 litre, 60° 'V' configuration delivers outstanding performance and grip producing 315 PS and 440 Nm of torque. This extremely advanced and compact V8 engine is one of the smoothest and cleanest engines of its type and offers effortless performance at any speed. Dual CVVT (Continuously Variable Valve Timing) on both intake and exhaust sides and counter-rotating balancer shafts give an excellent combination of power and refinement. Fuel consumption and CO₂ are also amongst the best for this class of engine.

D5

The D5 2.4 litre, turbocharged, in-line, five cylinder, common rail diesel engine delivers very low fuel consumption and CO₂ emissions with excellent performance – producing 185 PS and 400 Nm torque. This third-generation electronic fuel injection engine is made entirely of aluminium – giving it a similar weight to a petrol engine. Add that to the variable blade turbocharger and you've got one of the cleanest and most advanced diesel engines on the market.

AWD WITH INSTANT TRACTION™

The electronically controlled AWD (All Wheel Drive) system with Instant Traction™ automatically distributes drive between the front and rear wheels within a fraction of a second as conditions demand. This intelligent system optimises traction and stability in all conditions and aids fuel consumption.

INTELLIGENT 7 SEAT SYSTEM

The XC90 features an innovative and safe 7 seat interior with 64 seating configurations. At first glance the luxurious interior offers a traditional 5 seat configuration – but hidden in the rear load floor are 2 additional seats. Each of the 6 passenger seats can be independently folded flat offering one of the most versatile interiors available. Each seat has the usual Volvo full complement of equipment. The middle 2nd row seat also features an integrated child booster cushion.

CHOOSE YOUR VOLVO 2-3

STANDARD EQUIPMENT 4

OPTIONS & ACCESSORIES 5-6

UPHOLSTERY 7

TECHNICAL SPECIFICATION 8-9

CHOOSE YOUR COLOUR 10

INSCRIPTION™ 11

CARE BY VOLVO 13

XC90 S

The S model comes with all the features you'd expect from a Volvo. Beyond the 17" Antaeus wheels and RSC (Roll Stability Control) system, S offers dual-zone climate control, Rear Park Assist and power door mirrors and windows. Interior details include a leather steering wheel and gear knob, and our High Performance audio system with 8 speakers and CD player.

XC90 SE

The SE takes you and your passengers further along the path of self-indulgence with leather-faced upholstery, dark wood trim and a power adjustable driver's seat. There's a 6-CD changer and various intuitive features, such as the automatic rain sensor and autodimming rear-view mirror. On the outside, 18" Atlantis wheels make sure you don't go unnoticed.

XC90 SE SPORT

The SE Sport enhances both the dynamic performance of the XC90 and the distinctive style of the XC90. Its unique Sports Chassis has stiffer anti-roll bars to reduce roll, firmer shock absorbers to improve body control and a Sports-tuned, speed dependent steering system to improve responses and feedback. 19" 5-spoke Vulcanis alloy wheels, silver matt exterior trim and Sports tailpipes complete the exterior look, while its uniquely upholstered, contoured Sports seats combined with a Sports steering wheel, Chronograph instrument dials and aluminium/rubber trim create a focused driving environment.

XC90 SE LUX

The SE Lux includes the ultimate motoring equipment. Above and beyond SE specification, the SE Lux has chronograph dials, Sovereign Hide Soft Leather upholstery, Sapeli wood inlays, and both front seats are powered and heated. Further comforts include luxury floor mats and electric folding door mirrors with ground lights. Exterior details include 18" Camulus wheels, brushed aluminium roof rails and Bi-Xenon headlamps with power washers.

XC90 EXECUTIVE

The Executive is the ultimate in Volvo luxury. Its refined exterior boasts stylish body-coloured door mirrors and rubbing strips. Bi-Xenon headlights and 19" Galatea wheels are further highlights. Inside the cabin, inlays of walnut provide a warm welcome, while Executive Soft Leather upholstery, extra padding and armrests pamper. Further features include a fridge, RTI navigation system, and our Premium Sound audio with Dolby Pro Logic II Surround Sound.

	Basic £	VAT £	Rec Retail Price £	On the Road Price £	On the Road Price € ⁽ⁱ⁾ Euros
DIESEL					
D5 AWD (185 PS) S	£27,325.11	£4,781.89	£32,107.00	£32,820.00	€48,212.58

	Basic £	VAT £	Rec Retail Price £	On the Road Price £	On the Road Price € ⁽ⁱ⁾ Euros
PETROL					
3.2 AWD (238 PS) SE Geartronic	£30,297.87	£5,302.13	£35,600.00	£36,328.00	€53,365.83
V8 AWD (315 PS) SE Geartronic	£37,018.72	£6,478.28	£43,497.00	£44,225.00	€64,966.53
DIESEL					
D5 AWD (185 PS) SE	£29,452.77	£5,154.23	£34,607.00	£35,320.00	€51,885.08

	Basic £	VAT £	Rec Retail Price £	On the Road Price £	On the Road Price € ⁽ⁱ⁾ Euros
PETROL					
3.2 AWD (238 PS) SE Sport Geartronic	£31,957.45	£5,592.55	£37,550.00	£38,278.00	€56,230.38
V8 AWD (315 PS) SE Sport Geartronic	£38,486.81	£6,735.19	£45,222.00	£45,950.00	€67,500.55
DIESEL					
D5 AWD (185 PS) SE Sport	£31,112.34	£5,444.66	£36,557.00	£37,270.00	€54,749.63

	Basic £	VAT £	Rec Retail Price £	On the Road Price £	On the Road Price € ⁽ⁱ⁾ Euros
PETROL					
3.2 AWD (238 PS) SE Lux Geartronic	£32,085.11	£5,614.89	£37,700.00	£38,428.00	€56,450.73
V8 AWD (315 PS) SE Lux Geartronic	£38,805.96	£6,791.04	£45,597.00	£46,325.00	€68,051.43
DIESEL					
D5 AWD (185 PS) SE Lux	£31,240.00	£5,467.00	£36,707.00	£37,420.00	€54,969.98

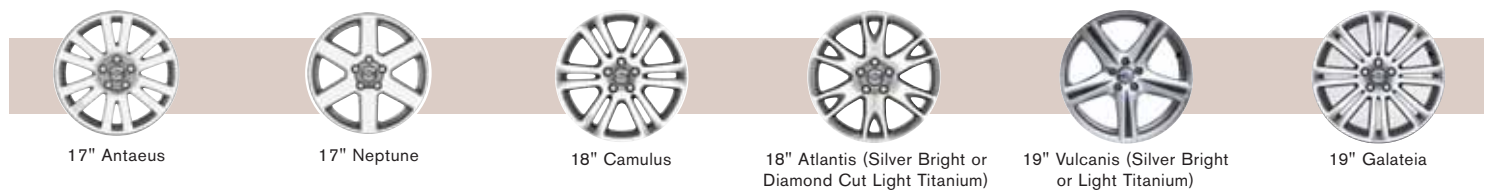
	Basic £	VAT £	Rec Retail Price £	On the Road Price £	On the Road Price € ⁽ⁱ⁾ Euros
PETROL					
3.2 AWD (238 PS) Executive Geartronic	£38,587.23	£6,752.77	£45,340.00	£46,068.00	€67,673.89
V8 AWD (315 PS) Executive Geartronic	£45,308.09	£7,928.91	£53,237.00	£53,965.00	€79,274.59
DIESEL					
D5 AWD (185 PS) Executive Geartronic	£38,805.96	£6,791.04	£45,597.00	£46,330.00	€68,058.77

(i) Euro prices shown are calculated using an exchange rate of 1.469 Euros to the £, as published in the Financial Times on 1st March 2006. Euro prices will be subject to the prevailing exchange rate at the time of purchase. These figures are for information purposes only.

	S	SE	SE SPORT	SE LUX	EXECUTIVE
SAFETY & SECURITY					
Dual Stage Driver and Passenger Airbags	•	•	•	•	•
SIPS (Side Impact Protection System)	•	•	•	•	•
SIPS Airbags	•	•	•	•	•
IC (Inflatable Curtain)	•	•	•	•	•
RSC (Roll Stability Control)	•	•	•	•	•
WHIPS (Whiplash Protection System) (Front Seats)	•	•	•	•	•
ABS (Anti-lock Brakes) with EBD (Electronic Brake Distribution)	•	•	•	•	•
DSTC (Dynamic Stability and Traction Control) with Electronic Brake Assistance	•	•	•	•	•
7 Three Point Seat Belts	•	•	•	•	•
Seat Belt Pre-tensioners (All Seats)	•	•	•	•	•
Head Restraints – All 7 Seats	•	•	•	•	•
ISOFIX Child Seat Preparation (2nd Row)	•	•	•	•	•
Integrated Booster Cushion (2nd Row)	•	•	•	•	•
Anti-theft Alarm including Immobiliser with LED (Key Transponder)	•	•	•	•	•
Key Integrated Remote Control Central Locking including Fuel Flap with Deadlocking System	•	•	•	•	•
Mass Movement Sensor	•	•	•	•	•
Water Repellent Door Mirror Glass	•	•	•	•	•
Load Cover (Cargo Area) and Load Protection Net	•	•	•	•	•
Day Running Lights	•	•	•	•	•
Headlamp Levelling System	•	•	•	•	•
High Level LED Brake Light	•	•	•	•	•
Home Safe and Approach Lighting	•	•	•	•	•
INTERIOR					
ECC (Electronic Climate Control) with AQS (Air Quality System) and Pollen Filter	•	•	•	•	•
B Pillar Ventilation	•	•	•	•	•
Exterior Temperature Gauge	•	•	•	•	•
Information Centre	•	•	•	•	•
Cruise Control	•	•	•	•	•
Geartronic Transmission (6 speed) (std 3.2 AWD and V8 AWD Only)	•	•	•	•	•
Speed Dependent Steering System (std V8 AWD Only)	•	•	•	•	•
Speed Dependent Sports Steering System	•	•	•	•	•
Front and Rear Power Windows	•	•	•	•	•
Illuminated Driver and Passenger Vanity Mirrors	•	•	•	•	•
Front and Rear Reading Lamps	•	•	•	•	•
Autodimming Rear View Mirror	•	•	•	•	•
Cupholders in Tunnel Console – Front and Rear	•	•	•	•	•
Grocery Bag Holder	•	•	•	•	•
12V Socket (Rear Tunnel Console/Luggage Area)	•	•	•	•	•
First Aid Kit	•	•	•	•	•
Power Driver's Seat (with Memory) and Door Mirror Memory	•	•	•	•	•
Power Driver and Passenger Seats (with Driver's Memory) and Door Mirror Memory	•	•	•	•	•
Heated Front Seats	•	•	•	•	•
Height Adjustable Driver and Passenger Seats	•	•	•	•	•
Forward Folding Front Passenger Seat	•	•	•	•	•
2 Individual Folding 3rd Row Seats	•	•	•	•	•
3 Individual Folding 2nd Row Seats	•	•	•	•	•
Front Centre Armrest	•	•	•	•	•
Leather Steering Wheel	•	•	•	•	•
Leather Gear Knob	•	•	•	•	•
Leather Sports Steering Wheel, Sports Gear Knob (Geartronic Only)	•	•	•	•	•
Steering Wheel Remote Audio Controls	•	•	•	•	•
Height and Reach Adjustable Steering Column	•	•	•	•	•
Illuminated Ignition Lock	•	•	•	•	•
Chronograph Instrument Dials (Blue/Silver – SE Sport Only)	•	•	•	•	•
Manganite Trim	•	•	•	•	•
Dark Wood Trim	•	•	•	•	•
Sport Rubber/Aluminium Trim	•	•	•	•	•
Sapeli Wood Trim	•	•	•	•	•
Walnut Wood Trim in Panels, Centre Console and Gear Lever Knob	•	•	•	•	•
Marstrand Textile/Vinyl Upholstery	•	•	•	•	•
Leather-faced Upholstery	•	•	•	•	•
Sports Leather-faced Upholstery (with Linen White Inlay)	•	•	•	•	•
Sovereign Hide Soft Leather Upholstery	•	•	•	•	•
Executive Soft Leather Upholstery and Door Inserts with Contrast Piping (All 3 Rows)	•	•	•	•	•
Executive Soft Leather Extra Padded Front Door Armrests	•	•	•	•	•
Luxury Floor Mats (Luxury Sports Floor Mats with Linen White Trim – SE Sport Only)	•	•	•	•	•
Executive Nubuck Trimmed Floor Mats	•	•	•	•	•
High Performance Audio System – Single Slot CD Radio, 4 x 40W Amplifier, Aux Input (MP3/WMA Compatible) Amplifier and 8 Speakers	•	•	•	•	•
High Performance Audio System – 6 x CD Radio, 4 x 40W Amplifier, Aux Input (MP3/WMA Compatible) and 8 Speakers	•	•	•	•	•
Dynaudio Premium Sound Audio System – 6 x CD Radio with Dolby Pro Logic II ⁽ⁱ⁾ Digital Surround Sound, 5 x 130W Amplifier, Aux Input (MP3/WMA Compatible) and 12 Speakers	•	•	•	•	•
Rear Seat Headset Sockets	•	•	•	•	•
RTI Navigation System with RDS-TMC, Remote Control and Europe Data on Hard Disk	•	•	•	•	•
Dual Band Integrated GSM Telephone	•	•	•	•	•
Refrigerator in Front Centre Armrest ⁽ⁱⁱ⁾	•	•	•	•	•
EXTERIOR					
17" Antaeus Alloy Wheels – 235/65 R17 Tyres	•	•	•	•	•
18" Atlantis Alloy Wheels – 235/60 R18 Tyres	•	•	•	•	•
18" Camulus Alloy Wheels – 235/60 R18 Tyres	•	•	•	•	•
19" Galateia Alloy Wheels – 255/50 R19 Tyres	•	•	•	•	•
19" Vulcanis 5-Spoke Alloy Wheels (Silver Bright) – 255/50 R19 Tyres	•	•	•	•	•
Locking Wheel Nuts	•	•	•	•	•
Tyre Sealant Kit and 12V Compressor	•	•	•	•	•
Front Fog Lights	•	•	•	•	•
Bi-Xenon Headlamps with Headlamp Cleaning System	•	•	•	•	•
Active Bi-Xenon Headlamps with Headlamp Cleaning System	•	•	•	•	•
Power Adjustable and Heated Door Mirrors	•	•	•	•	•
Power Folding Door Mirrors	•	•	•	•	•
Door Mirror Ground Lights	•	•	•	•	•
Rear Wash/Wipe with Interval Function	•	•	•	•	•
Rain Sensor – Automatic Windscreen Wiper Activation	•	•	•	•	•
Roof Rails (Brushed Aluminium – SE Lux/Executive Only)	•	•	•	•	•
Electronic All Wheel Drive System with Instant Traction™ (Haldex Coupling)	•	•	•	•	•
Load Compensating Suspension	•	•	•	•	•
Comfort Chassis	•	•	•	•	•
Sports Chassis	•	•	•	•	•
Towbar Preparation	•	•	•	•	•
Metallic Paint	•	•	•	•	•
Colour Co-ordinated Door Mirrors (Matt Chrome – Executive)	•	•	•	•	•
Colour Co-ordinated Wheel Arches	•	•	•	•	•
Extended Colour Co-ordinated Wheel Arches	•	•	•	•	•
Front and Rear Skidplate	•	•	•	•	•
Colour Co-ordinated Door Handles and Rubbing Strips	•	•	•	•	•
Unique Executive Grille (Sports Grille – SE Sport Only)	•	•	•	•	•
Chrome Surround for Air Intake (V8 AWD Only) (Silver Matt – SE Sport Only)	•	•	•	•	•
Silver Matt Exterior Trim (Grille Surround, Window Frame Surround, Tailgate Trim and Side Scuff Plates)	•	•	•	•	•
Silver Extended Front Skidplate and Rear Skidplate	•	•	•	•	•
Rear Park Assist	•	•	•	•	•
Exterior Executive Badge	•	•	•	•	•
Chromed Stainless Steel Tail Pipe (Sports Tail Pipes – SE Sport Only)	•	•	•	•	•
Executive Chromed C Pillar	•	•	•	•	•

(i) Dolby and Pro Logic II Surround Sound™ are trademarks of Dolby Laboratories Licensing Corporation.
(ii) Front Centre Armrest cannot be removed on XC90 Executive.

	Basic £	VAT £	Rec. Retail Price £	Rec. Retail Price € ⁽ⁱ⁾	S	SE	SE SPORT	SE LUX	EXECUTIVE
SAFETY & SECURITY									
BLIS (Blind Spot Information System) with Power Folding Door Mirrors	£553.19	£96.81	£650.00	€954.85	o	o	o	u (£450)	u (£450)
Passenger Airbag Cut Off Switch	£21.28	£3.72	£25.00	€36.73	o	o	o	o	o
Water Repellent Laminated Side Windows ⁽ⁱⁱ⁾	£331.91	£58.09	£390.00	€572.91	o	o	o	o	o
Dark Tinted Rear Windows (Rear Windows and Rear Screen) ⁽ⁱⁱⁱ⁾	£276.60	£48.40	£325.00	€477.43	o	o	o	o	o
IR (Infrared) Reflective Glass Windscreen and Front Windows	£208.51	£36.49	£245.00	€359.91	o	o	o	o	o
Level Sensor	£106.38	£18.62	£125.00	€183.63	o	o	o	o	o
Power Child Locks (Rear Doors)	£127.66	£22.34	£150.00	€220.35	o	o	o	o	o
INTERIOR									
Geartronic Transmission (6 speed) (std 3.2 AWD and V8 AWD)	£1,148.94	£201.06	£1,350.00	€1,983.15	o	o	o	o	•
Speed Dependent Steering System (std V8 AWD)	£191.49	£33.51	£225.00	€330.53	o	o	n/a	o	o
Air Conditioning for 3rd Row of Seats ^{(iii)(vii)}	£314.89	£55.11	£370.00	€543.53	o	o	o	o	o
Power Glass Tilt and Slide Sunroof ^(viii)	£723.40	£126.60	£850.00	€1,248.65	o	o	o	o	o
Autodimming Rear View Mirror	£170.21	£29.79	£200.00	€293.80	o	•	•	•	•
Autodimming Rear View Mirror with Compass	£212.77	£37.23	£250.00	€367.25	o	u (£50)	u (£50)	u (£50)	u (£50)
Grocery Bag Holder	£85.11	£14.89	£100.00	€146.90	o	•	•	•	•
Ashtray and Cigarette Lighter	–	–	–	–	nco	nco	nco	nco	nco
Power Driver's Seat (with Memory) and Door Mirror Memory	£510.64	£89.36	£600.00	€881.40	o	•	•	n/a	n/a
Power Driver and Passenger Seats (with Driver's Memory) and Door Mirror Memory	£1,021.28	£178.72	£1,200.00	€1,762.80	o	u (£600)	u (£600)	•	•
Heated Front Seats	£191.49	£33.51	£225.00	€330.53	o	o	o	•	•
Dark Wood/Leather Steering Wheel and Gear Knob ^{(iii)(ix)}	£204.26	£35.74	£240.00	€352.56	o	o	n/a	o	o
Sapelli Leather Steering Wheel, Gear Knob (Geartronic Only) ⁽ⁱⁱⁱ⁾	£204.26	£35.74	£240.00	€352.56	o	o	n/a	o	n/a
Cross Brushed Aluminium Trim	£212.77	£37.23	£250.00	€367.25	o	nco	n/a	nco	nco
Dark Wood Trim	£425.53	£74.47	£500.00	€734.50	o	•	n/a	nco	nco
Sapelli Wood Trim ^{(iii) (x)}	£425.53	£74.47	£500.00	€734.50	o	nco	n/a	•	n/a
Inscription™ Black Walnut Wood Trim (only available with Inscription™)	–	–	–	–	n/a	o	n/a	o	n/a
Soft Leather Upholstery	£127.66	£22.34	£150.00	€220.35	n/a	o	n/a	o	n/a
Luxury Floor Mats ^(xi)	£85.11	£14.89	£100.00	€146.90	o	o	n/a	•	n/a
Leather-faced Upholstery	£800.00	£140.00	£940.00	€1,380.86	o	•	n/a	n/a	n/a
Sovereign Hide Soft Leather Upholstery	£1,906.38	£333.62	£2,240.00	€3,290.56	n/a	n/a	n/a	•	n/a
Inscription™ Soft Leather Upholstery, Door Panels, Sports Leather Steering Wheel, Luxury Floor Mats (All 3 Rows) with Piping and Inscription™ Treadplates	£1,923.40	£336.60	£2,260.00	€3,319.94	n/a	o	n/a	u (£1,300)	u (£800)
Rear Seat Entertainment System with 1 x DVD player in Front Centre Armrest, 2 x 7" screens, 2 x IR Headphones, Remote Control and Dark Tinted Rear Windows (Rear Windows and Rear Screen) ^{(iii)(x)}	£1,851.06	£323.94	£2,175.00	€3,195.08	n/a	o	o	o	o
Dynaudio Premium Sound Audio System – 6 x CD Radio with Dolby Pro Logic II ^(vi)	–	–	–	–	n/a	o	o	o	•
Digital Surround Sound, 5 x 130W Amplifier, Aux Input (MP3/WMA Compatible) and 12 Speakers ^(xi)	£851.06	£148.94	£1,000.00	€1,469.00	n/a	o	o	o	•
Sub Woofer Under Load Floor Area ^{(iii)(xii)}	£153.19	£26.81	£180.00	€264.42	o	o	o	o	n/a
Rear Seat Audio Console with Headphone Sockets x 4	£80.85	£14.15	£95.00	€139.56	o	o	o	o	•
RTI Navigation System with RDS-TMC, Remote Control and Europe Data on Hard Disk ^(xiii)	£1,574.47	£275.53	£1,850.00	€2,717.65	o	o	o	o	•
Dual Band Integrated GSM Telephone	£765.96	£134.04	£900.00	€1,322.10	o	o	o	o	•
Volvo On Call ^(xiv)	£297.87	£52.13	£350.00	€514.15	n/a	n/a	n/a	n/a	o
EXTERIOR									
Black Paint (Solid)	£212.77	£37.23	£250.00	€367.25	o	o	n/a	o	n/a
Metallic/Pearlescent Paint	£489.36	£85.64	£575.00	€844.68	o	o	o	o	•
Inscription™ Paint	£702.13	£122.87	£825.00	€1,211.93	o	o	o	o	u (£250)
PremAir® Treated Radiator (converts up to 75% of ground-level ozone to oxygen)	£127.66	£22.34	£150.00	€220.35	o	o	o	o	o
17" Neptune Alloy Wheels – 235/65 R17V Tyres	–	–	–	–	nco	nco	n/a	nco	n/a
18" Atlantis Alloy Wheels – 235/60 R18V Tyres	£510.64	£89.36	£600.00	€881.40	o	•	n/a	nco	n/a
18" Atlantis Alloy Wheels (Polished) – 235/60 R18V Tyres	£702.13	£122.87	£825.00	€1,211.93	o	u (£225)	n/a	u (£225)	n/a
18" Atlantis Alloy Wheels (Chromed) – 235/60 R18V Tyres	£1,268.09	£221.91	£1,490.00	€2,188.81	o	u (£890)	n/a	u (£890)	n/a
18" Camulus Alloy Wheels – 235/60 R18V Tyres	£510.64	£89.36	£600.00	€881.40	o	nco	n/a	•	n/a
19" Galatea Alloy Wheels – 255/50 R19V Tyres	–	–	–	–	n/a	n/a	n/a	n/a	•
19" Vulcanis 5-Spoke Diamond Cut Alloy Wheels (Light Titanium) – 255/50 R19 Tyres	–	–	–	–	n/a	n/a	nco	n/a	n/a
TPMS (Tyre Pressure Monitoring System)	£127.66	£22.34	£150.00	€220.35	o	o	o	o	o
Michelin Synchron Tyre (Road and Snow) – 235/65 R17H (Electronic Speed Limitation – 118mph) (set of 4) ^(v)	£170.21	£29.79	£200.00	€293.80	o	nco	n/a	nco	n/a
Tempa Spare Wheel ^(viii)	–	–	–	–	nco	nco	nco	nco	nco
Headlamp Cleaning System	£191.49	£33.51	£225.00	€330.53	o	o	o	•	•
Bi-Xenon Headlamps with Headlamp Cleaning System	£595.74	£104.76	£700.00	€1,028.30	o	o	o	•	n/a
Active Bi-Xenon Headlamps with Headlamp Cleaning System	£808.51	£141.49	£950.00	€1,395.55	o	o	o	u (£250)	•
Power Folding Door Mirrors with Ground Lights and Water Repellent Door Mirror Glass	£170.21	£29.79	£200.00	€293.80	o	o	o	•	•
Rain Sensor – Automatic Windscreen Wiper Activation	£123.40	£21.60	£145.00	€213.01	o	•	•	•	•
Brushed Aluminium Roof Rails	–	–	–	–	n/a	n/a	nco	•	•



	Basic £	VAT £	Rec. Retail Price £	Rec. Retail Price € ⁽ⁱ⁾	S	SE	SE SPORT	SE LUX	EXECUTIVE
WINTER PACK									
Heated Front Seats, Headlamp Cleaning System and Luxury Floor Mats	£319.15	£55.00	£375.00	€550.88	o	o	n/a	n/a	•
UPGRADE FOR INSCRIPTION™ SE OR SE SPORT MODELS	£259.57	£45.43	£305.00	€448.05	n/a	o	o	n/a	n/a
ACTIVE BI-XENON PACK									
Active Bi-Xenon Headlamps with Headlamp Cleaning System, Heated Front Seats and Luxury Floor Mats	£851.06	£148.94	£1,000.00	€1,469.00	o	o	o	n/a	•
COMMUNICATIONS PACK^(v)									
Volvo On Call ^(xiv) Dual Band Integrated GSM Telephone with Handset, RTI Navigation System with RDS-TMC and Europe Data on Hard Disk	£2,170.21	£379.79	£2,550.00	€3,745.95	o	o	o	o	n/a

• = standard, o = optional, n/a = not available, nco = no cost option i.e. a customer can upgrade to that option without paying any extra money, u = upgrade i.e. a customer can upgrade to that option but will pay the difference in price, upgrade price shown in (£).

- (i) Euro prices shown are for information only and are calculated using an exchange rate of 1.469 Euros to the £ as published in the Financial Times on 1st March 2006. Euro prices will be subject to the prevailing exchange rate at time of purchase. These figures are for information purposes only.
- (ii) Water Repellent Laminated Side Windows and Dark Tinted Rear Windows cannot be combined.
- (iii) Air Conditioning for 3rd Row of Seats and Sub Woofer cannot be ordered combined.
- (iv) Once this option has been fitted to a vehicle, the speed limitation cannot be overridden. Can only be ordered in conjunction with 17" Neptune Alloys.
- (v) If Premium Sound Audio ordered with RTI Navigation System or Communications Pack, system includes 11 speakers.

(vi) Dolby and Pro Logic II Surround Sound™ are trademarks of Dolby Laboratories Licensing Corporation.

(vii) Cannot be ordered on D5 Manual.

(viii) Electric Glass Tilt and Slide Sunroof cannot be combined with Tempa Spare Wheel on D5 Executive Geartronic.

(ix) Volvo On Call includes Safety package (Security package available at additional cost).

(x) Not available with Inscription™.

(xi) Sub Woofer cannot be combined with Premium Sound.

(xii) Cannot be combined with Cross Brushed Aluminium Trim.

(xiii) Not available with Dynaudio Premium Sound.

(xiv) Only available on Executive if ordered in combination with Inscription™ upholstery.

ACCESSORIES	Basic £	VAT £	Rec Retail Price £	Rec Retail Price € ⁽ⁱ⁾
EXTERIOR ACCESSORIES (PRICES EXCLUDE FITTING UNLESS SHOWN OTHERWISE)				
Aluminum Bike Rack (down tube clamp)	£51.57	£9.02	£60.59	€89.01
Bike Rack (servo lift)	£81.66	£14.29	£95.95	€140.95
Bike Rack (cargo area)	£51.57	£9.03	£60.60	€89.02
Load Carrier Wing Profile ⁽ⁱⁱ⁾	£105.05	£18.38	£123.43	€181.32
Load Carrier (different models available) ...from	£69.90	£12.23	£82.13	€120.65
Sport Styling Kit			available Q4 2006	
19" Alestor Silver Bright Alloy Wheels (Executive only)	£403.88	£70.68	£474.56	€697.13
Mud Flaps (front) ⁽ⁱⁱⁱ⁾	£19.77	£3.46	£23.23	€34.12
Mud Flaps (rear) ⁽ⁱⁱⁱ⁾	£23.23	£4.07	£27.30	€40.10
Roofbox – Sport Time 200 (440 litre volume)	£152.04	£26.61	£178.65	€262.43
Roofbox – Sport Time 500 (310 litre volume)	£145.00	£25.38	£170.38	€250.28
Roofbox – Space 650 (365 litre volume)	£331.91	£58.08	£389.99	€572.90
Roofbox – Weekender (370 litre volume)	£214.90	£37.61	£252.51	€370.93
Roofbox – Experience (450 litre volume)	£275.06	£48.14	£323.20	€474.78
Load Basket	£82.93	£14.51	£97.44	€143.14
Roof Protection Ribs ⁽ⁱⁱⁱ⁾	£85.96	£15.04	£101.00	€148.37
Running Boards ⁽ⁱⁱⁱ⁾	£347.26	£60.77	£408.03	€599.40
Anti-slip Running Board Footplate	£25.53	£4.47	£30.00	€44.07
Two Tone Bumper Bars	£212.77	£37.23	£250.00	€367.25
Ski/Snowboard Carrier with Sliding Rail	£60.17	£10.53	£70.70	€103.86
Snow Chain – standard version (variety available) ...from	£120.34	£21.06	£141.40	€207.72
Towbar – Fixed type with 7 Pin Electrics ⁽ⁱⁱⁱ⁾	£363.15	£63.55	£426.70	€626.83
Towbar – Fixed type with 13 Pin Electrics ⁽ⁱⁱⁱ⁾	£471.13	£82.45	£553.58	€813.21
Towbar – Detachable type with 7 Pin Electrics ⁽ⁱⁱⁱ⁾	£448.25	£78.44	£526.69	€773.71
Towbar – Detachable type with 13 Pin Electrics ⁽ⁱⁱⁱ⁾	£557.10	£97.49	£654.59	€961.59
Park Assist Camera ^(iv)	£480.85	£84.15	£565.00	€829.98
Front Park Assist ^(iv)	£469.79	£82.21	£552.00	€810.89
Bumper Protector (Dirt Cover)	£104.11	£18.22	£122.33	€179.70
INTERIOR ACCESSORIES (PRICES EXCLUDE FITTING UNLESS SHOWN OTHERWISE)				
Boot Mat – textile/rubber reversible for 7 seats	£85.98	£15.05	£101.03	€148.41
Boot Mat – moulded plastic 7 seats	£85.98	£15.05	£101.03	€148.41
Boot Mat – moulded plastic 5 seats	£85.98	£15.05	£101.03	€148.41
Cooler/Hot Box (excludes power cable)	£85.98	£15.05	£101.03	€148.41
Bluetooth	tbc			
Hands-free Phone System ...from ⁽ⁱⁱⁱ⁾	£283.66	£49.64	£333.30	€489.62
First Aid Kit	£17.19	£3.01	£20.20	€29.67
Load Liner – full cargo area	£55.87	£9.78	£65.65	€96.44
Load Securing Straps (cargo area)	£17.19	£3.01	£20.20	€29.67
Load Securing Net (cargo area)	£60.17	£10.53	£70.70	€103.86
Net Pocket (cargo area)	£25.79	£4.51	£30.30	€44.51
Padded Neck Cushion	£22.74	£3.98	£26.72	€39.25
RSE – Rear Seat Entertainment Roof Mounted Single Screen ⁽ⁱⁱⁱ⁾	£1,590.21	£278.29	£1,868.50	€2,744.83
RSE – Rear Seat Entertainment – 2x6" Screens in Headrest ^{(iii)(iv)}	£2,127.66	£372.34	£2,000.00	€2,938.00
Rubber Floor Mats (set of four)	£64.47	£11.28	£75.75	€111.28
Rubber Floor Mats (third row)	£34.38	£6.02	£40.40	€59.35
Steel Safety Grille	£142.25	£24.89	£167.14	€245.53
Storage Net (under glove box)	£25.79	£4.51	£30.30	€44.51
Sunblind – rear door windows (pair)	£25.53	£4.47	£30.00	€44.07
Sunblind – rear compartment (3 pieces)	£25.53	£4.47	£30.00	€44.07
Warning Triangle	£20.37	£3.56	£23.93	€35.16
CHILD SEATS				
Child Seat ISOFIX ^(v)	£124.90	£6.25	£131.15	€192.65
Infant Seat ISOFIX ^(v)	£88.16	£4.41	£92.57	€135.98
ISOFIX Base	£92.77	£16.23	£109.00	€160.13
Baby Insert	£27.72	£4.85	£32.57	€47.85
Child Booster Cushion	£30.09	£5.26	£35.35	€51.93
Child Booster Backrest (to go with above)	£30.09	£5.26	£35.35	€51.93
Padded Upholstery – for booster seat and headrest	£25.79	£4.51	£30.30	€44.52
EXTERIOR STYLING PACK				
includes: Running Board, Load Carrier, Front Mudflaps and Roof Protection Ribs	£500.00	£87.50	£587.50	€863.04

(i) The Euro prices shown in this price list are calculated using an exchange rate of 1.469 Euros to the £, as published in the Financial Times on 1st March 2006. Euro prices will be subject to the prevailing exchange rate at the time of purchase. These figures are for information purposes only.

(ii) Accessory only. Indicates total fitted price. At participating dealers only.

(iii) Must be ordered in conjunction with Leather Upholstery.

(iv) Vehicle must have RTI fitted.

(v) VAT on Child Seats = 5%.

For further information and a complete list of all Volvo Accessories, just take a look at the new Accessory website at www.volvocars.co.uk/accessories

UPHOLSTERY	Upholstery Code	Upholstery Colour	Dashboard Top/ Door Panel Colour ^(iv)	Door Insert Colour	Headliner Colour
Marstrand Textile/Vinyl	C000	Off Black	Off Black/Off Black	Off Black	Quartz
	C010	Soft Beige	Espresso/Mocca	Soft Beige	Soft Beige
Leather-faced	C900	Off Black	Off Black/Off Black	Off Black	Quartz
	C90T	Calcite	Off Black/Off Black	Calcite	Quartz
	C950	Quartz	Dark Umbra/Umbra	Quartz	Quartz
	C95T	Calcite	Dark Umbra/Umbra	Calcite	Quartz
	C910	Soft Beige	Espresso/Mocca	Soft Beige	Soft Beige
Sports Leather-faced (with Linen White Inlay)	CB0B	Off Black	Off Black/Off Black	Off Black	Quartz
Sovereign Hide Soft Leather	C700	Off Black	Off Black/Off Black	Off Black	Quartz
	C70R	Chestnut	Off Black/Off Black	Chestnut	Quartz
	C70T	Calcite	Off Black/Off Black	Calcite	Quartz
	C75T	Calcite	Dark Umbra/Umbra	Calcite	Quartz
	C71R	Chestnut	Espresso/Mocca	Chestnut	Soft Beige
	C710	Soft Beige	Espresso/Mocca	Soft Beige	Soft Beige
Executive Soft Leather	CF00	Off Black	Off Black/Off Black	Off Black	Quartz
	CF0L	Linen White	Off Black/Off Black	Linen White	Soft Beige
	CF0D	Chestnut	Off Black/Off Black	Chestnut	Quartz
	CF1L	Linen White	Espresso Brown/Mocca Brown	Linen White	Soft Beige

UPHOLSTERY

MARSTRAND TEXTILE/VINYL



Off Black (C000)



Soft Beige (C010)

LEATHER-FACED



Off Black (C900)



Calcite (C90T)



Quartz (C950)



Calcite (C95T)



Soft Beige (C910)

SOVEREIGN HIDE SOFT LEATHER



Off Black (C700)



Chestnut (C70R)



Calcite (C70T)



Calcite (C75T)



Chestnut (C71R)



Soft Beige (C710)

EXECUTIVE SOFT LEATHER



Chestnut (CF0D)



Linen White (CF1L)



Off Black (CF00)



Linen White (CF0L)

SPORTS LEATHER-FACED

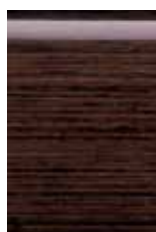


Sports Leather-faced (CB0B)

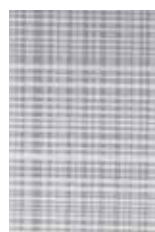
INTERIOR INLAYS



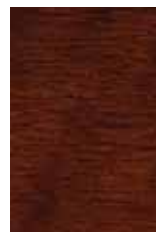
Manganite



Dark Wood



Cross Brushed Aluminium



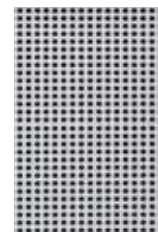
Sapeli Wood



Walnut Wood (Executive Only)

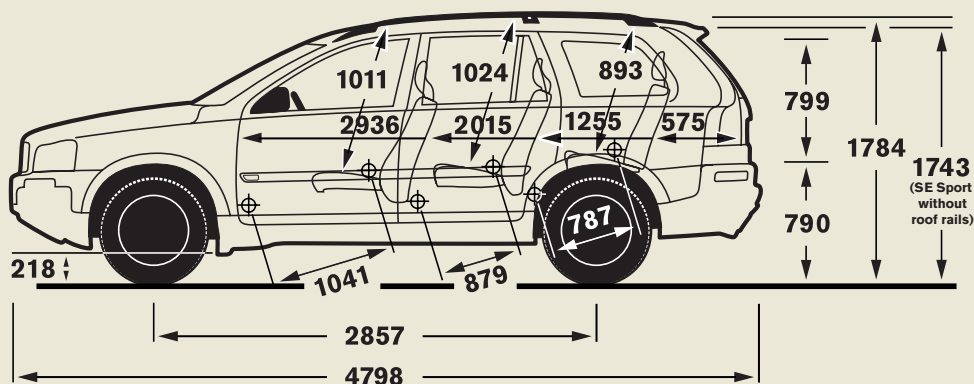


Black Walnut Wood (Inscription™ Only)



Sport Rubber/Aluminium Trim

ENGINE	3.2	V8	D5
Configuration	Transverse – 24 valve	Transverse – 32 valve	Transverse – 20 valve
Cylinders	6	8	5
Engine capacity, cc	3192	4414	2400
Bore x stroke, mm	84 x 96	94 x 79.5	81 x 93.2
Max. output ECE, PS/kw/rpm	238/175/6200	315/232/5850	185/136/4000
Max. torque ECE, Nm/rpm	320/3200	440/3900	400/2000-2750
Octane rating	95-98 ⁽ⁱⁱⁱ⁾ RON unleaded	95-98 ⁽ⁱⁱⁱ⁾ RON unleaded	N/A – Turbo Diesel
Fuel system	Port fuel injection	Port fuel injection	Multipoint direct fuel injection
Compression ratio	10.8:1	10.4:1	17.3:1



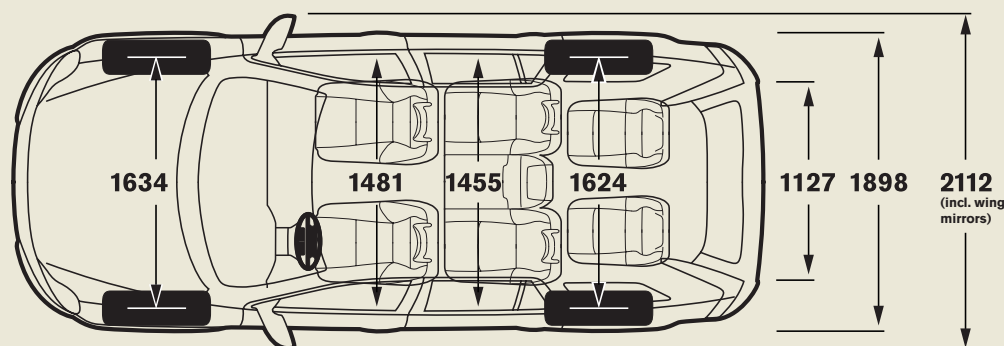
PERFORMANCE	3.2	V8	D5	
	Geartronic	Geartronic	Manual	Geartronic
Top speed, mph	130	130	121	118
Acceleration 0-60 mph, sec	8.9	6.9	10.3	11.1
0-62 mph (0-100 kmh), sec	9.5	7.3	10.9	11.5
Drag co-efficient	0.36	0.36	0.36	

FUEL CONSUMPTION ⁽ⁱ⁾	3.2	V8	D5	
	Geartronic	Geartronic	Manual	Geartronic
(Government Approved) Mpg (l/100 km) ⁽ⁱⁱ⁾				
Urban	16.8 (16.8)	14.1 (20.0)	26.4 (10.7)	23.7 (11.9)
Extra Urban	31.7 (8.9)	28.8 (9.8)	40.9 (6.9)	38.2 (7.4)
Combined	23.9 (11.8)	20.9 (13.5)	34.0 (8.3)	31.4 (9.0)
CO ₂ g/km	281	322	219	239
VED (Vehicle Excise Duty) Band	G	G	F	G
Emission Standard	Euro IV	Euro IV	Euro IV	

INSURANCE GROUPS	3.2	V8	D5	
	Geartronic	Geartronic	Man	Geartronic
XC90	16E	19E	15E	15E

E = Exceeds security requirements for model concerned and group rating has been reduced.

WEIGHTS	3.2	V8	D5	
	Geartronic	Geartronic	Man	Geartronic
Min. kerb weight, kg (actual kerb weight dependent on spec)	2050	2102	2054	2069
Max. possible towing weight braked, kg	2250	2250	2250	2250
Max. towing weight unbraked approx, kg ^(iv)	750	750	750	750
Max. total weight, kg	2760	2770	2740	2750
Max. roof load, kg	100	100	100	100
Max. payload, kg (dependent on spec)	710	668	686	681



	3.2	V8	D5
Brakes			
Disc Diameter Front, mm	17" – 336	17" – 336	16" – 336
	Ventilated	Ventilated	Ventilated
Disc Diameter Rear, mm	308	308	16" – 308
Transmission			
Manual	–	–	6 speed
Geartronic	6 speed	6 speed	6 speed
Fuel Tank Volume			
litres (gallons)	80 (17.6)	80 (17.6)	68 (15.0)

LUGGAGE COMPARTMENT	
Volume, 2nd/3rd Row Folded, litres (cu.ft)	1837 (64.9)
Volume, 2nd Row Up/3rd Row Folded, litres (cu.ft)	615 (21.7)
Volume, 2nd/3rd Row Up, litres (cu.ft)	249 (8.8)

TURNING CIRCLE		17"	18"	19"
Rack and pinion	m (ft)	12.5 (41.0)	12.5 (41.0)	13.1 (43.0)

WHEELS & TYRES	
17" Neptune Alloy wheels	235/65 R17V Michelin Diamaris
17" Antaeus Alloy wheels	235/65 R17V Michelin Diamaris
17" Neptune Alloy wheels	235/65 R17H Michelin Synchrone (Road and Snow, Electronic Speed Limitation – 118mph)
18" Atlantis Alloy wheels	235/60 R18V Continental Premium Contact
18" Atlantis Alloy wheels (Polished)	235/60 R18V Continental Premium Contact
19" Galateia Alloy wheels	255/50 R19W Pirelli P Zero Rosso
19" Vulcanis Alloy wheels (Silver Bright)	255/50 R19W Pirelli P Zero Rosso
19" Vulcanis Alloy wheels (Light Titanium)	255/50 R19W Pirelli P Zero Rosso

Notes

- (i) For best performance and lowest fuel consumption 98 RON is recommended. 95 RON can be used for normal driving.
- (ii) These results do not express or imply any guarantee of the fuel consumption of a particular car as there are inevitable differences between individual cars of the same model. Additionally driving style, traffic conditions, as well as the age, mileage and standard of maintenance will affect a car's fuel consumption.
- (iii) The Urban fuel consumption figure is based on typical city driving, including starting the car from cold. The Extra Urban figure is based on typical motorway driving and cruising. The Combined figure averages the consumption across both cycles.
- (iv) Unbraked towing weight must not exceed 50% of kerb weight up to a maximum of 750 kg.
- (v) Without sunroof.
- (vi) Measurement taken at height of floor covering.

The weight of the vehicle will influence the level of CO₂ emitted. As a result, vehicles with higher levels of specification and factory fit options may emit higher levels of CO₂. Once a vehicle has been built it will be given its own specific CO₂ emission on which the Vehicle Excise Duty will be charged.

A weighbridge must be used to determine specific weights.

Data valid for manual transmission unless specified.

All measurements in mm.

The Max. output figures are quoted in PS (Pferdestärke), which is the metric equivalent of brake horsepower.

NB Some of the information in this price list may not be correct due to product changes which may have occurred since it was printed. Some of the equipment described or shown may now be available only at extra cost. Before ordering, please ask your Volvo dealer for the latest information. The manufacturer reserves the right to make changes at any time, without notice, to prices, colour, materials, specifications and models.

Volvo Car UK Limited, Globe Park, Marlow, Buckinghamshire, SL7 1YQ

CHOOSE YOUR COLOUR

WITH A WIDE RANGE OF EXTERIOR COLOURS YOUR VOLVO XC90 CAN REFLECT YOUR PERSONAL TASTE.



019 Black Stone



467 Magic Blue pearl⁽ⁱ⁾⁽ⁱⁱ⁾



426 Silver metallic



468 Lava Sand pearl



452 Black Sapphire metallic⁽ⁱ⁾



469 Lunar Gold pearl



453 Inscription™ White pearl⁽ⁱⁱⁱ⁾



471 Willow Green pearl⁽ⁱⁱ⁾



454 Ruby Red pearl



477 Inscription™ Electric Silver Coarse Flake metallic⁽ⁱ⁾⁽ⁱⁱ⁾



455 Titanium Grey pearl⁽ⁱ⁾⁽ⁱⁱ⁾



480 Shadow Blue pearl⁽ⁱⁱ⁾



463 Blackcurrant pearl



612 Passion Red^(iv)



465 Cedar Green pearl⁽ⁱ⁾



614 Ice White

(i) XC90 Executive only available with these colours.

(ii) XC90 SE Sport only available with these colours.

(iii) Exclusive to XC90 Executive.

(iv) Exclusive to XC90 SE Sport.

NB It is not possible to reproduce exact original shades in printed matter. Please ask your Volvo dealer to show you samples.

THE END IS JUST THE BEGINNING

It's a simple idea; one point of contact for all your car ownership needs – whether it's about finding the right finance deal or who to contact in an emergency. To get the most out of owning your Volvo, trust Care by Volvo.

STARTING OFF ON THE RIGHT FOOT

You might be surprised how easy and flexible financing can be. Our range of finance, service and insurance options allows you to budget around one key factor – your lifestyle.

FINANCE/LEASE

As part of Volvo, Volvo Car Finance has developed a series of funding plans that will provide you with maximum choice and flexibility when acquiring a Volvo.

INSURANCE

Volvo Owners Insurance is designed for Volvo drivers and because we know Volvos inside out, we can offer exactly the right tools and expertise, fitting only genuine Volvo parts by trained Volvo technicians. Because Volvo drivers have an excellent reputation, we can also offer extensive cover at a reasonable price.

Call now for your insurance quote on **0800 238 239⁽ⁱ⁾**, quoting reference BROCH.

MAKING LIFE EASIER

Owning a Volvo should be a safe and enjoyable experience. To ensure it stays that way, we're committed to providing you with the best in support for as long as you own one.

SERVICE PROGRAMME

Your Volvo dealer has the unique know-how to tailor a service programme according to Volvo's strict recommendations and guarantees you years of safety and driving pleasure.

VOLVO ON CALL

Subscribe to Volvo On Call and you'll never be completely on your own. It's a GPS-based communication system providing 24-hour access to both emergency and roadside assistance wherever you are. See the Volvo On Call brochure for more information.

LOOKING AHEAD

You'll probably never find out just how good some of these services are. But should the unexpected happen, we'd like to think that you'd be even happier you chose a Volvo.

ROADSIDE ASSISTANCE

Every new car comes with one year's Volvo Assistance cover. You'll enjoy free breakdown and recovery assistance, anywhere in Europe, 24 hours a day. You can even extend cover for £85 for one year or £155 for two years.

Call Volvo Assistance on **08701 650 978**.

WARRANTY

Every new Volvo comes with comprehensive protection. Our warranty covers the first three years or 60,000 miles, whichever comes first. There's a three year unlimited mileage warranty on the paintwork, and either eight or twelve years against rust perforation. If a component fails due to a defect or material fault, your dealer will swiftly rectify the problem, free of charge.

For tax free sales, including Military, Diplomat and all other Export enquiries, contact Volvo Car UK Tourist & Diplomat Sales or Volvo Car UK British Military Sales on **01707 262 388** or e-mail to vcukics@volvocars.com or bms@volvocars.com

All 'On The Road' prices quoted in this price list include Volvo standard national delivery charge, inclusive of number plates at £480 and the VED (Vehicle Excise Duty) car tax effective from 1st March 2000. The 'On The Road' price also includes a £38 vehicle first registration fee (as set by the government), effective since 1st April 1998 (excludes Channel Islands and Isle of Man). Retail prices quoted do not include these additions.

WHAT NEXT? If you'd like to find out more about the range of products and services that make up Care by Volvo, the story continues at www.volvocars.co.uk Alternatively you can contact your nearest Volvo dealer or request relevant brochures.

(i) Volvo Owners Insurance is underwritten by Royal & Sun Alliance Insurance plc No. 93792. Registered in England and Wales at St Mark's Court, Chart Way, Horsham, West Sussex RH12 1XL. Authorised and regulated by the Financial Services Authority. For your protection telephone calls will be recorded and may be monitored.

NB Some of the information in this brochure may not be correct due to product changes which may have occurred since it was printed. Before ordering, please ask your Volvo dealer for the latest information. The manufacturer reserves the right to make changes at any time, without notice, to prices, colour, materials, specifications and models.

Volvo Inscription™ opens up a whole new colourful world of interior sophistication for you to discover. Choose from a collection of exquisite, specially designed interiors available in a kaleidoscope of colours and put your own personal signature on your Volvo.

Once you've colour co-ordinated the finest Scottish hide leather upholstery, carpets, steering wheel, panel trims and matching textile mats, you'll have created an in-car experience your senses won't let you forget.

To help you decide, our Design Team have suggested the best possible colour combinations for interior and exterior shown in the Designer's Recommendations section.

Inscription™. Designed by Volvo, inscribed by you.



CH7F

UPHOLSTERY AND INTERIOR COLOURS
Marquis Red/Off Black Inscription™ Soft Leather with Marquis Red stitching. Off Black interior with Granite headliner and Off Black Luxury Floor Mats with Marquis Red piping.

DESIGNER'S RECOMMENDATIONS

INLAYS

Inscription™ Black Walnut Wood trim

EXTERIOR COLOURS

- 019 Black Stone
- 452 Black Sapphire metallic
- 455 Titanium Grey pearl
- 469 Lunar Gold pearl
- 477 Inscription™ Electric Silver Coarse Flake metallic



CH7H

UPHOLSTERY AND INTERIOR COLOURS
Noble Blue/Off Black Inscription™ Soft Leather with Noble Blue stitching. Off Black interior with Granite headliner and Off Black Luxury Floor Mats with Noble Blue piping.

DESIGNER'S RECOMMENDATIONS

INLAYS

Inscription™ Black Walnut Wood trim

EXTERIOR COLOURS

- 019 Black Stone
- 452 Black Sapphire metallic
- 455 Titanium Grey pearl
- 468 Lava Sand pearl
- 469 Lunar Gold pearl
- 477 Inscription™ Electric Silver Coarse Flake metallic
- 480 Shadow Blue pearl



CH2L

UPHOLSTERY AND INTERIOR COLOURS
Linen White Inscription™ Soft Leather with Linen White Stitching. Sandstone beige interior with Arena headliner and Sandstone beige Luxury Floor Mats with Linen White piping.

DESIGNER'S RECOMMENDATIONS

INLAYS

Inscription™ Black Walnut Wood trim

EXTERIOR COLOURS

- 019 Black Stone
- 614 Ice White
- 453 White pearl
- 454 Ruby Red pearl
- 463 Blackcurrant pearl
- 468 Lava Sand pearl
- 469 Lunar Gold pearl
- 471 Willow Green pearl
- 477 Inscription™ Electric Silver Coarse Flake metallic
- 480 Shadow Blue pearl



CH7J

UPHOLSTERY AND INTERIOR COLOURS
Toscana Tan Inscription™ Soft Leather with Toscana Tan stitching. Off Black interior with Granite headliner and Off Black Luxury Floor Mats with Toscana Tan piping.

DESIGNER'S RECOMMENDATIONS

INLAYS

Inscription™ Black Walnut Wood trim
Cross Brushed Aluminium trim

EXTERIOR COLOURS

- 019 Black Stone
- 426 Silver metallic
- 452 Black Sapphire metallic
- 455 Titanium Grey pearl
- 468 Lava Sand pearl
- 477 Inscription™ Electric Silver Coarse Flake metallic.
- 480 Shadow Blue pearl



CH7G

UPHOLSTERY AND INTERIOR COLOURS
Off Black Inscription™ Soft Leather with Off Black stitching. Off Black interior with Granite headliner and Off Black Luxury Floor Mats with Off Black piping.

DESIGNER'S RECOMMENDATIONS

INLAYS

Inscription™ Black Walnut Wood trim
Cross Brushed Aluminium trim

EXTERIOR COLOURS

- 019 Black Stone
- 426 Silver metallic
- 452 Black Sapphire metallic
- 454 Ruby Red pearl
- 455 Titanium Grey pearl
- 463 Blackcurrant pearl
- 471 Willow Green pearl
- 477 Inscription™ Electric Silver Coarse Flake metallic
- 480 Shadow Blue pearl



CH7D

UPHOLSTERY AND INTERIOR COLOURS
 Serene Sand/Off Black Inscription™ Soft Leather with Serene Sand stitching. Off Black interior with Granite headliner and Off Black Luxury Floor Mats with Serene Sand piping.

DESIGNER'S RECOMMENDATIONS

INLAYS

Inscription™ Black Walnut Wood trim

EXTERIOR COLOURS

- 019 Black Stone
- 426 Silver metallic
- 452 Black Sapphire metallic
- 455 Titanium Grey pearl
- 468 Lava Sand pearl
- 469 Lunar Gold pearl
- 471 Willow Green pearl
- 477 Inscription™ Electric Silver Coarse Flake metallic
- 480 Shadow Blue pearl



CH2V

UPHOLSTERY AND INTERIOR COLOURS
 Espresso Inscription™ Soft Leather with Espresso stitching. Sandstone beige interior with Arena headliner and Sandstone beige Luxury Floor Mats with Espresso piping.

DESIGNER'S RECOMMENDATIONS

INLAYS

Inscription™ Black Walnut Wood trim

EXTERIOR COLOURS

- 426 Silver metallic
- 452 Black Sapphire metallic
- 468 Lava Sand pearl
- 469 Lunar Gold pearl
- 471 Willow Green pearl
- 477 Inscription™ Electric Silver Coarse Flake metallic



CH7L

UPHOLSTERY AND INTERIOR COLOURS
 Linen White Inscription™ Soft Leather with Linen White stitching. Off Black interior with Granite headliner and Off Black Luxury Floor Mats with Linen White piping.

DESIGNER'S RECOMMENDATIONS

INLAYS

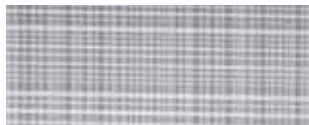
Inscription™ Black Walnut Wood trim

EXTERIOR COLOURS

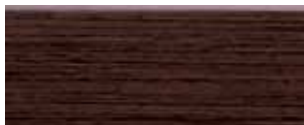
- 019 Black Stone
- 614 Ice White
- 453 White pearl
- 454 Ruby Red pearl
- 463 Blackcurrant pearl
- 468 Lava Sand pearl
- 469 Lunar Gold pearl
- 471 Willow Green pearl
- 477 Inscription™ Electric Silver Coarse Flake metallic
- 480 Shadow Blue pearl



Sapeli wood trim



Cross Brushed aluminium trim



Dark wood trim



Inscription™ Black Walnut wood trim



Inscription™ Luxury Floor Mats with Nubuck Piping



Inscription™ Sports steering wheel



Ribbed Upholstery Inserts

Volvo. for life

VOLVO

Volvo Car UK Limited
www.volvocars.co.uk

A04444

MODEL YEAR 2007 EDITION 5
PDF: SEPTEMBER 2006
09/06/90010368/25